

# BLOOD'S 15L15: Part 15

By

Vernon R. Morris, Jr. MD

On June 30, 1845 D.O. Blood & Co. was established by acquiring the Philadelphia Despatch Post and their remaining 15L3 **world's first pictorial stamps**. The following day, July 1, 1845 our government eliminated private sector inter-city mail service, but compensated the public with rates reduced to recent market levels. The precious few local posts were fortunately ignored. During the next few years D.O. Blood & Co. printed three variations of the historic "striding messenger" stamp,<sup>1</sup> which soon became reserved for *local door delivery* and considered a "city stamp," and is the present day logo of the Carriers and Locals Society,

Within six months, by January 1846, D.O. Blood & Co. developed profoundly different geometric double circle stamp designs dedicated for *outbound* letters, and considered a "post office stamp." Inscribed "**For the POST OFFICE,**" the **world's first special purpose stamp**<sup>2</sup> created a paradigm shift to bifurcated private local postal service.

Two years later, by January 1848, the company was renamed "**BLOOD'S DESPATCH,**" which of course appeared on stamps and handstamps. The next five adhesive stamp issues were no longer large squares, but instead oval, rectangular, and trended smaller. On May 25, 1848 the company moved west from near the Merchants Exchange Building and post office to Sixth Street,<sup>3</sup> directly across from Independence Hall.

Bifurcated postal business allowed Blood's Despatch to better pass savings on to the public, because outbound letters easily went to the nearby post office and were less costly. Although volume discounts varied according to service type, in the very largest quantities both were very close to 1 cent.

The benchmark single service price had remarkably decreased within eight months from 3 cents in May 1848, to 2 cents in July 1848, to 1 cent by January 8, 1849. Some other nearby local posts in 1848 (Telegraph Despatch), and eventually the Philadelphia carriers by March 1849 reduced their charges to market level: 1 cent. Bifurcated local service was obsolete. Blood's volume discounts were no longer necessary. The trade-off for simple flat one-cent single service price was mandatory prepayment, **no collect service**. Blood's Despatch final issue, 15L13, clearly specified **One Cent**, and was its dominant issue for several years.

For over three years, however, letters without a prepaid stamp deposited in Blood's Despatch collection boxes quietly went undelivered, from January 8, 1849 until as late as April 6, 1852,<sup>4</sup> shortly following the great fire of December 27, 1851.

---

<sup>1</sup> Vernon R. Morris, Jr., MD, "Blood's 15L6: Part 6" *The Penny Post*, Vol. 22, No. 2, April 2014, Whole No. 87, page 58.

<sup>2</sup> Vernon R. Morris, Jr., MD, "Blood's 15L7: Part 7," *The Penny Post*, Vol. 22, No. 3, July 2014, Whole No. 88, pages 29, 53.

<sup>3</sup> Vernon R. Morris, Jr., MD, "Blood's 15L11: Part 11," *The Penny Post*, Vol. 23, No. 3, July 2015, Whole No. 92, page 50.

<sup>4</sup> Public Ledger, Vol XXXIII No. 14.

The topic of this article begins in the Spring of 1852 with a third generation of Blood's name, stamps, office location, and service milestones.

### 15L15 "Blue & Pink, *Bluish*"

The stamp design in **Figure 1** measures 11 mm high by 14.5 mm wide, and has been listed in the *Scott Catalogue* as 15L15 "blue & pink, *bluish*, (53)" correctly under the group "1848-1854 for 1 cent,"<sup>5</sup> but an as individual issue incorrectly beginning in 1853. The company name at top, BLOOD'S, was no longer in bold capital letters; gone at bottom was DESPATCH inverted arch, and replaced by a mundane PHILAD'A; cursive fonts remained in the center, although for the first time "~~Penny Post~~" appeared. "BLOOD'S / ~~Penny Post~~ / PHILAD'A" 15L15 declared a new company name, one that would last for a long time.

**Figure 2** reveals a 15L15 pane format at 25, five rows and five columns, with a 3mm bluish outer margin. This arrangement was different from ~~One Cent~~ 15L13, which had been 24 stamps arranged in six rows of four columns. Common to both, however, was a double frame. Predecessor ~~One Cent~~ 15L13 outer frame line, though, was a thin guideline continuous with all other stamps in the pane; and inner frame line with rounded corners.<sup>6</sup> The ~~Penny Post~~ 15L15 outer frame line, however, was bold and discontinuous with surrounding stamps; and an inner line with squared off corners. Therefore, ~~Penny Post~~ 15L15, included a "clear" space surrounding individual 15L15 stamps.

Old auction catalogs have referred to a black on bluish variant, perhaps a precursor Blood's Penny Post stamp issue, **Figure 3**. The author has never personally examined an example, nor to his knowledge has any authenticating service provided confirmation. Black on blue is listed for completeness and to encourage further study.

### 15L15 Description Census

1. May 13, 1852 (printed); folded circular; local delivery; (black and pink on bluish) cut rectangle, acid cancel tied; Blood's Handstamp Type 18; printed "Circular." To: Unknown #1 / (Philadelphia). HRHarmer November 12, 1953 lot 1375; HRHarmer 887 Oct 19, 1954 lot 1033.
2. June 30, 1852; dated folded letter; outbound Pennsylvania; cut rectangle, portion of stamp below, acid cancel tied, blue Clarke 63a Philadelphia cds tied; 3 cent 1851 general issue Scott #11, Philadelphia cds cancel tied. To: "W<sup>m</sup> Hackett Esquire / Comp / Easton Bank / Easton / Penn<sup>a</sup>". (Bennett February 29, 1976 lot 518).
3. April 16, (1853); envelope; outbound GERMANY; cut rectangle, acid cancel tied, blue Clarke 75a Philadelphia APR/16 cds tied; Blood's Handstamp Type 17; second Philadelphia cds; APR/20 NYORK B<sup>R</sup> PK<sup>T</sup> 23 cds; italicized blue

---

<sup>5</sup> *Scott 2012 Specialized Catalogue of United States Stamps & Covers, Nineteenth Edition*, Scott Publishing Co., 2011, Sidney Ohio, page 545.

<sup>6</sup> Vernon R. Morris, Jr., MD, "Blood's Part 14: 15L13," *The Penny Post*, Vol. 24, No. 3, July 2016, Whole No. 96, pages 6, 23.

numeral “20” handstamp; manuscript red crayon “10 5/19”, black “30”, blue “13” (silbergroschen) due; reverse red AACHEN transit backstamp, blue AUSGABE transit backstamp, two illegible Prussian railway straightline backstamps, and blue manuscript “11” silbergroschen (international portion) . To: “M<sup>r</sup> Adu Roi / Doctor of Law / Braunsweig / Germany.”(German for Brunswick) Siegel 927 December 20, 2008 lot 1136, Richardson. May 14, 2009 PFC 476556. Morris collection.

4. April 18, 1853; dated folded bill of lading; outbound Virginia; cut rectangle, acid cancel tied, blue (Clarke 62) Philadelphia cds tied; 3 cent 1851 general issue Scott #11, Philadelphia cds cancel tied; manuscript “*H Reagle*”. To: “Mr John Knoté / Wheelin Va”. Nutmeg 3 February 18, 1998 lot 2558. Morris collection.
5. April 19, (1853); envelope; outbound PRUSSIA; cut rectangle, acid cancel tied; Blood’s Handstamp Type 17; blue Clarke 62 Philadelphia cds; black APR/20 N.York BR. PKT 46 cds; light blue manuscript “26,” matching “4” (silbergroscher); black manuscript “62 ¾” and “60”. To: “Fromm / W.Th. Burgmer & Comp / Runiggreif Wolfgaborau / Preusen / Duets”. Rumsey 50 February 4, 2013 lot 278, Winter. February 25, 2013 PFC 510787.
6. May 6, 1853; envelope; local delivery; partially torn rectangle, acid cancel tied; manuscript “6 May 1853”. To: “Cha<sup>s</sup>. J. Biddle Esq. / 7<sup>th</sup> above Walnut / East Side”.<sup>7</sup> Alexander collection.
7. May 6, (1853); envelope; outbound New Jersey; top margin, cut rectangle, acid cancel tied; Blood’s Handstamp Type 17; 3 cent 1851 general issue Scott #11, (blue Clarke 62) Philadelphia cds cancel tied. To: “Mr John Togert / Paterson. / New Jersey,”. Siegel 433 June 12, 1973 lot 1320. Ex West.
8. June 1, 1853; dated folded letter, U.S.S. Cumberland; (blue on lilac) outbound New Jersey, origin GREECE; cut rectangle, acid cancel tied; Blood’s Handstamp Type 17; blue Clarke 75a Philadelphia cds. To: “M<sup>r</sup>. (L.B.) Hunter / Princeton / New. Jersey.” (RKaufmann lot 325). Shachat collection.
9. June 14, 1853; dated folded letter; Spring Garden District; cut rectangle, acid cancel tied; Blood’s Handstamp Type 17. To: “M<sup>r</sup>. Cha<sup>s</sup> Kochersperger / South East corner of / Broad & Wallace Sts.”<sup>8</sup> Stromberg collection.
10. June 25, (1853); envelope; outbound Pennsylvania; cut rectangle, acid cancel tied; Blood’s Handstamp Type 17; 3 cent 1851 general issue Scott #11, blue Clarke 63a Philadelphia cds cancel tied; manuscript “Valuable”. To: “Miss Christina B. Steel, / Abington, / Montgomery Co. / Pa.” Kelleher 674 October 26, 2015 lot 258. Morris collection.

<sup>7</sup> 1855 McElroy’s City Directory, page 38 lists Charles J. Biddle, atty & coun. 57 S 7<sup>th</sup>.

<sup>8</sup> 1858 McElroy’s City Directory, page 370 lists Charles Kockersperger at Broad & Wallace.

11. June 27, 1853; dated folded letter; outbound New Jersey, origin GREECE; cut rectangle, acid cancel; Blood's Handstamp Type 17; blue Clarke 75a Philadelphia cds; black italicized numeral "5" handstamp; non-contemporaneous manuscript "Nov 27, 1853". To: "M<sup>rs</sup>. L. B. Hunter / Princeton / New. Jersey. / U.S.America." Stromberg collection.
12. July 1, 1853; folded cover; local delivery; top margin, cut rectangle, acid cancel tied; Blood's Handstamp Type 17. To: "T Smiley Esq / Insurance & Trust Co / 62 Walnut st / Phila". <sup>98</sup>(1855 McElroys City Directory page 512 lists Thomas T. Smiley MD, actuary Nat S. Inst. & Trust Co, 62 Walnut, h 260 pine) Lyons collection.
13. July 13, (1853); envelope; outbound New York; cut rectangle, acid cancel tied; Blood's Handstamp Type 17; damaged 3 cent 1851 general issue Scott #11, blue Clarke 63a Philadelphia cds cancel tied. To: "Mrs Henry Butterfield. / Messrs Butterfield Bro. / No 30 Williams St. / New York." Snow collection.
14. July 22, (1853); folded cover; outbound New York; cut rectangle, acid cancel tied; Blood's Handstamp Type 17; 3 cent 1851 general issue Scott #11, (blue) Clarke 63a Philadelphia cds cancel tied. To: "R.W.Cameron Esqr" / (New York). Wolffers May 30, 1975 lot 2084.
15. July 22, 1853; dated folded letter; outbound Washington D.C.; cut rectangle, acid cancel tied; Blood's Handstamp Type 17; smeared manuscript "Way 5". To: "M<sup>rs</sup>. J.P.Lee / F P Blair Esq<sup>r</sup> / Washington City / D.C."
16. August 3, (1853); envelope; outbound New Jersey; cut rectangle, acid cancel tied; Blood's Handstamp Type 17; 3 cent 1851 general issue Scott #11, blue Clarke 63a Philadelphia cds cancel tied. To: "Rev. Dr. Hugh N. Wilson / Hacket's Town- / New. Jersey". Stromberg collection.
17. August 10, (1853); envelope; outbound Pennsylvania; large bottom sheet margin, cut rectangle, acid cancel tied; Blood's Handstamp Type 17; blue Clarke 75a Philadelphia cds double strike. To: "Ann W Milhous / Kennett Square / Chester Co. / Pa." Stromberg collection.
18. August 20, (1853); folded cover; outbound Pennsylvania; cut rectangle, acid cancel tied; Blood's Handstamp Type 17; 3 cent 1851 general issue Scott #11, blue Clarke 63a Philadelphia cds cancel tied. To: "Mess. Snyder & Milnes / Pottsville / P<sup>a</sup>." Mohrmann 142 October 23, 1974 lot 641; Kelleher 624 April 7, 2011 lot 2474. (2008 PFC)

---

<sup>9</sup> 1855 McElroy's City Directory, page 512 lists Thomas T. Smiley MD, actuary Nat S. Inst. & Trust Co, 62 Walnut, h 260 pine.

19. August 24, (1853); damaged U1 entire, red embossed Nesbit seal on backflap; outbound Rhode Island; cut rectangle, acid cancel tied; Blood's Handstamp Type 17. To: "Jabez M. Fisher Esq. / Steam Mill / Providence / R.I." Alexander collection.
20. September 5, (1853); envelope; outbound Maryland; large top sheet margin, cut rectangle, acid cancel tied; Blood's Handstamp Type 17; 3 cent 1851 general issue Scott #11, blue Clarke 63a Philadelphia cds cancel tied. To: "Mr. D.P. Cameron / Principio P.O. / Cecil County / Maryland." Lyons collection.
21. September 8, 1853; folded cover; outbound California; cut rectangle, acid cancel tied; Blood's Handstamp Type 17; two 3 cent 1851 general issue Scott #11, blue Clarke 63a Philadelphia cds cancel tied. To: "H.W. Halleck Esq' / San Francisco / Cal". Siegel 927 December 20, 2006 lot 1135, Richardson.
22. September 8, 1853; envelope; local delivery; cut rectangle, acid cancel tied, Blood's Handstamp Type 17 tied; manuscript "*Sep. 8'53 / 3/4 of the*" and "*Now 325 1/2 / Arch St.*" To: "Charles E. Lex, Esq. / 6<sup>th</sup> below Arch St. / East Side".<sup>109</sup>(1856 McElroys City Directory page 373 lists Charles E Lex, atty & coun, 51 N 6<sup>th</sup>, h 423 Race) Ex Morris. Alexander collection.
23. September 21, 1853; folded letter; local delivery; cut rectangle, acid cancel tied; Blood's Handstamp Type 17. To: "G.Schrack / 4<sup>th</sup> Near / Race". Stromberg collection.
24. September 26, 1853; envelope; outbound SCOTLAND; cut rectangle, acid cancel tied; Blood's Handstamp Type 17; block of six 3 cent 1851 general issue Scott #11 (two of eight original stamps removed), five blue Clarke 63a Philadelphia SEP/26 cds tied cancels; red numeral "19" handstamp, matching Liverpool 1853 transit handstamp; manuscript "*13*", "*ans<sup>d</sup> - 9/11 mo.*" and "*W. Hodgson 9 mo. 53*"; reverse black BOSTON SEP/28 B<sup>R</sup> PKT transit backstamp, and black ABERDEEN / OC10/1853 receiving backstamp. To: "Lydia A. Barclay / Aberdeen / Scotland". Siegel sale 927 December 20, 2006 lot 1137, Richardson. October 30, 2009 PFC 481206 warning two stamps removed. Morris collection.
25. September 30, 1853; envelope; local delivery; cut rectangle, acid cancel tied; Blood's Handstamp Type 17; manuscript "*A.J.S. / Sep. 30. 1853.*" To: "Mr John. H. Watt. / Care, McCutcheon & Collins. / Front & New Sts. / Philada."<sup>110</sup>(1858 McElroy City Directory page 423 lists M'CUTCHEON & COLLINS, com. Mers. S W Front and New) Snow collection.

---

<sup>10</sup> 1856 McElroy's City Directory, page 373 lists Charles E Lex, atty & coun, 51 N 6<sup>th</sup>, h 423 Race.

<sup>11</sup> 1858 McElroy City Directory page, 423 lists M'CUTCHEON & COLLINS, com. Mers. S W Front and New.

26. October 4, 1853; envelope, tape covering missing address; outbound New Jersey; cut rectangle, acid cancel tied, blue Clarke 63a Philadelphia cds tied; Blood's Handstamp Type 17; 3 cent 1851 general issue Scott #11, blue Philadelphia cds cancel tied; internal manuscript "*O<sup>ct</sup> 3<sup>d</sup> / 53*". To: "Mrs (Hunter) / Princeton / N. Jersey". Shachat collection.
27. October 5, (1853); U1 entire, backflap embossed red Nesbit seal; outbound Virginia; cut rectangle, acid cancel tied; Blood's Handstamp Type 17; blue Clarke 63a Philadelphia cds. To: "M<sup>rs</sup> Selinco Coles / Scottsville / Albemarle Co: / Va". Morris collection.
28. October 7, (1853); envelope; outbound New York; cut rectangle, acid cancel tied; 3 cent 1851 general issue Scott #10, blue Clarke 63a Philadelphia cds cancel tied; Blood's Handstamp Type 17. To: "Mrs. James Boogess, / Messrs Geo. M. Bind & Co. / 14 Broadway / New York." Alexander collection.
29. October 12, 1853; folded cover; outbound CANADA WEST; cut rectangle, acid cancel; Blood's Handstamp Type 17; 3 cent 1851 general issue Scott #11 and 1 cent Scott #7, blue Clarke 63a Philadelphia cds cancel tied twice; red "U<sup>D</sup> STATES PAID 6d" in lozenge transit marking; manuscript "*Ref Lety 15.Oct / 53,*"; reverse London / OC15/1853 / U.C. receiving backstamp, three indistinct blue (Philadelphia) cds handstamps, and manuscript "*11.Oct / 1853*". To: "Rev.J. Skinner D.D. / London / Canada West -". Siegel 294 January 6, 1966 lot 238; Siegel 925 November 15, 2006 lot 1336, Kuphal. May 14, 2009 PFC 476557. Ex Gibson. Morris collection.
30. October 21, 1853; envelope; outbound Georgia; bottom left sheet corner, cut rectangle, acid cancel tied; Blood's Handstamp Type 17; 3 cent 1851 general issue Scott #11, blue Clarke 63a Philadelphia cds cancel tied. To: "Mr<sup>s</sup> Lewis N. Whittle - / Macon - / Georgia -". Stromberg collection.
31. October 24, 1853; U2 entire; outbound (Pennsylvania); cut rectangle, acid cancel, blue indistinct Philadelphia cds tied. To: (John) "Hickman Es" / (West Chester, Pa). Siegel 417 September 28, 1972, lot 1631.
32. November 9, (1853); blue oval "MALONE & TAYLOR LUMBER" negative corner advertisement U4 entire mildly damaged left entire, backflap embossed red Nesbit seal; outbound Pennsylvania; bottom margin, cut rectangle, acid cancel; Blood's Handstamp Type 17; blue Clarke 63a Philadelphia cds; manuscript "*post master / will please forward*". To: "Saml, Buckman / Dolinton. P.O. / Bucks Coy / P<sup>a</sup>". July 13, 2013 PFC 513658. Ex Morris.
33. November 17, (1853); blue oval "MALONE & TAYLOR LUMBER" negative corner advertisement U4 entire; outbound Pennsylvania; top margin, cut rectangle, acid cancel tied, blue Clarke 63a Philadelphia cds tied; Blood's Handstamp Type 17; manuscript "*Dolington / Bucks Coy P<sup>a</sup>*". To: "Saml Buckman / ~~care of Joseph Heck / Doylestown P.O.~~ / Bucks Coy Pa". Rumsey

56 April 24, 2014 lot 1542. September 25, 2013 PFC 514966. Morris collection.

34. December 2, (1853); (envelope); outbound unknown; cut rectangle, acid cancel tied, blue Clarke 63a Philadelphia cds tied; Blood's Handstamp Type 17; 3 cent 1851 general issue Scott #11, Philadelphia cds cancel tied. To: "Frances P. Blair Esquire" / Unknown #2. R.Kaufmann 58 May 13, 1989 lot 853.
35. December 13, (1853); pamphlet; local delivery; cut rectangle, acid cancel tied; Blood's Handstamp Type 17; manuscript "*from Ann*". To: "E.K. Price Esq / Arch above 8<sup>th</sup>".<sup>12</sup> Stromberg collection.
36. February 24, (1852-53); envelope; outbound Pennsylvania; cut rectangle, acid cancel tied, blue Clarke 63a Philadelphia cds tied; Blood's Handstamp Type 17; 3 cent 1851 general issue Scott #11, Philadelphia cds cancel tied. To: "M S Richards Esq / Penn Street below 5<sup>th</sup> / Reading / Pa".
37. Reverse with 3 cent 1851 general issue Scott #11, blue November 20<sup>th</sup> cds cancel tied. To: "John Parker, Esquire / Parkerville Post Office / Chester County / Pennsylvania". **Gemin** May 28, 1978 lot 65.
38. April 23, (1852-53); envelope; outbound Pennsylvania; cut rectangle, acid cancel tied; Blood's Handstamp Type 17; 3 cent 1851 general issue Scott #11, blue Clarke 62 Philadelphia cds cancel tied; manuscript "*Ch 3. Erie RR*". To: "Mrs. Benjamin Rupell / Febanchor / Bedford County / Penn<sup>a</sup>."
39. May 5, (1852-53); (envelope); outbound Maryland; cut rectangle, acid cancel tied; Blood's Handstamp Type 17; 3 cent 1851 general issue Scott #11, blue Clarke 62 Philadelphia cds cancel tied; manuscript "*Mr J P G Seannger*". To: "Miss Santa R Smith / George Town / Kent Co. / Md". Sotheby March 10, 1981 lot 1689.
40. May 7, (1852-53); envelope; outbound New York; cut rectangle, acid cancel tied, blue Clarke 62 Philadelphia cds tied; Blood's Handstamp Type 17; 3 cent 1851 general issue Scott #11, blue Philadelphia cds cancel tied. To: "Nadine R. Cross / Care of William Olson Es / Nassau Street / New York". Kover King 28 September 12, 1974 lot 92.
41. June 2, (1852-53); envelope; outbound Pennsylvania; cut rectangle, acid cancel tied; Blood's Handstamp Type 17; blue Clarke 75a Philadelphia cds. To: "Mr Charles Johns / Bristol / Bucks County / P.a". Stromberg collection.
42. June 4, (1852-53); blue "YOUNG, SHIPMAN & CO LUMBER" negative advertisement corner envelope; outbound New Jersey; cut rectangle, acid

---

<sup>12</sup> 1855 McElroy's City Directory, page 448 lists PRICE ELI K, atty & coun. 309 and, h 307 Arch.

- cancel tied, blue Clarke 62 Philadelphia cds tied; Blood's Handstamp Type 17; 3 cent 1851 general issue Scott #11, Philadelphia cds cancel tied. To: "Mr Hiram Deets / Quakertown Hunterdon Co / New Jersey". JFox April 8, 1953 lot 408; Nutmeg 40 November 7, 2001 lot 1911.
43. June 4, (1852-53); (envelope); outbound unknown; cut rectangle, acid cancel, blue (Clarke 75a) Philadelphia cds tied; Blood's Handstamp Type 17; 3 cent 1851 general issue Scott #11, Philadelphia cds cancel tied. To: "Miss Clara Bradley" / Unknown #3. (Siegfried) November 14, 1964 lot 42.
  44. June 6, (1852-53); envelope; outbound Pennsylvania; cut rectangle, acid cancel tied, Blood's Handstamp Type 17 tied; 3 cent 1851 general issue Scott #11, blue Clarke 62 Philadelphia cds cancel tied. To: "Dr. Jeremy Wilson / Alexandria- / Montgomery Co. / Pa." Wolffers 168 lot 433.
  45. June 8, (1852-53); envelope; outbound Rhode Island; cut rectangle, acid cancel tied; Blood's Handstamp Type 17; 3 cent 1851 general issue Scott #11, blue Clarke 62 Philadelphia cds cancel tied. To: "Rev Dr Howe / For Mrs Howe / Bristol / Rhode Island". Winter June 24, 1973 lot 328.
  46. June 9, (1852-53); envelope, blue "REEVES & SON FURNATURE" negative advertisement back flap; outbound Virginia; right margin, cut rectangle, acid cancel; Blood's Handstamp Type 17; 3 cent 1851 general issue Scott #11, blue Clarke Philadelphia 62 cds cancel tied. To: "James H Devaughn / Alexandria / V<sup>a</sup>". July 3, 2013 PFC 513657. Morris collection.
  47. June 18, (1852-53); envelope; outbound unknown; bottom sheet margin, cut rectangle, acid cancel tied; Blood's Handstamp Type 17; 3 cent 1851 general issue Scott #11, blue Clarke Philadelphia 62 cds cancel tied. To: "Mrs Mary M. Spangler" / Unknown #4. Phillips March 1981 lot 341.
  48. June 20, (1852-53); orange envelope; outbound unknown; cut rectangle, acid cancel, blue Clarke Philadelphia 62 cds tied; Blood's Handstamp Type 17; 3 cent 1851 general issue Scott #11, Philadelphia cds cancel tied. To: Unknown #5. Pollitz March 1981 lot 341.
  49. June 24, (1852-53); small very narrow envelope; outbound Pennsylvania; cut rectangle, acid cancel tied, blue Clarke 75a Philadelphia cds cancel tied. To: "M<sup>r</sup> Juliet W.L Campbell / Pottsville / Schuylkill Co / Penn<sup>a</sup>". Ex Bowman. Morris collection.
  50. August 23, (1852-53); envelope; outbound New Jersey; cut rectangle, portion of stamp above, acid cancel tied; Blood's Handstamp Type 17; 3 cent 1851 general issue Scott #11, blue Clarke Philadelphia 63a cds cancel tied. To: "Mrs Miller, / Princeton, / New Jersey.". Shachat collection.

51. August 30, (1852-53); envelope severely reduced at left; outbound New Jersey; cut rectangle, acid cancel tied; Blood's Handstamp Type 17; manuscript "35". To: "Mr. Isaac D James / Druggist / Trenton / New Jersey". Snow collection.
52. September 12, (1852-53); (front); outbound New York; cut trapezoid, (acid cancel), indistinct blue Philadelphia cds tied; Blood's Handstamp Type 17; 3 cent 1851 general issue Scott #10 left sheet margin, Philadelphia cds cancel tied. To: "Messrs ----- Sherbard & Co / N<sup>o</sup>. 15 John Street / New York". Eastland August 28, 1969 lot 402.
53. October 25, (1852-53); envelope; outbound Pennsylvania; cut rectangle, acid cancel tied; Blood's Handstamp Type 17; 3 cent 1851 general issue Scott #11, blue Clarke 63a Philadelphia cds cancel tied; manuscript "*Paid*,". To: "Mrs. H. M. Leinbach / Landisburg / Perry Co. / Pa." Kelleher 674 October 26, 2015 lot 258. Morris collection.
54. October 27, (1852-53); envelope; outbound Pennsylvania; cut rectangle, acid cancel tied; Blood's Handstamp Type 17; 3 cent 1851 general issue Scott #11, blue Clarke 63a Philadelphia cds cancel tied. To: "S.S. Nichols Esq<sup>r</sup> / Harrisburg / Pa". Snow collection.
55. November 5, (1852-53); envelope; outbound Ohio; cut rectangle, acid cancel tied, blue Clarke 63a Philadelphia cds tied; Blood's Handstamp Type 17; 3 cent 1851 general issue Scott #11, Philadelphia cds cancel tied. To: "M<sup>rs</sup>. Ruth P. Kleinkirk. / Xenia, / Ohio". Rumsey 51 February 5, 2013 lot 2995.
56. November 8, (1852-53); (envelope); outbound Maryland; cut rectangle, acid cancel tied, blue Clarke 63a Philadelphia cds cancel tied; 3 cent 1851 general issue Scott #11, Philadelphia cds cancel tied. To: "Mrs." (Blair) / (Baltimore, MD). RKaufmann 58 May 13, 1989 lot 854.
57. November 9, (1852-53); small envelope; outbound New Jersey; cut rectangle, acid cancel tied; Blood's Handstamp Type 17; 3 cent 1851 general issue Scott #11, blue Clarke 63a Philadelphia cds cancel tied. To: "Rev. W. Henry Green / Princeton / New Jersey". Siegel 1063 December 20, 2013 lot 1800. Morris collection.
58. November 16, (1852-53); envelope; outbound Pennsylvania; cut rectangle, acid cancel, blue Clarke 63a Philadelphia cds tied; Blood's Handstamp Type 17; 3 cent 1851 general issue Scott #11 bottom left corner sheet margin, blue Philadelphia cancel tied; manuscript "*Answered*." To: Miss Lisle Bucher / Harrisburg / Penn<sup>a</sup>". Fox March 31, 1961 lot 531; Wolfers 168 lot 431.
59. November 28, (1852-53); envelope; outbound Maryland; cut rectangle, acid cancel tied, blue Clarke 63a Philadelphia cds tied; Blood's Handstamp Type 17; 3 cent 1851 general issue Scott #11, Philadelphia cds cancel tied; indistinct

blue cds on reverse. To: "M<sup>rs</sup>. Eliza Kerr / corner of Madison & Preston Sts. / Baltimore." Rumsey 23 June 2, 2006 lot 233. Morris collection.

60. January 4, (1854); envelope; outbound Maryland; bottom sheet margin, cut rectangle, acid cancel tied; Blood's Handstamp Type 17; 3 cent 1851 general issue Scott #11 strip of three, black Clarke 63b Philadelphia cds cancel tied twice. To: "Bofisses C. Morfit / T. Bank Lane / Baltimore / Maryland." Corwin collection.
61. January 5, (1854); folded letter; outbound North Carolina; cut rectangle, acid cancel tied, black Clarke 63b Philadelphia cds tied; Blood's Handstamp Type 17; 3 cent 1851 general issue Scott #11, Philadelphia cds cancel tied. To: "Mr Isaac Jarrett / Huntsville / Yadkin co / NC". Siegel 965 December 3, 2008 lot 1099.
62. January 31, (1854); envelope, large illustrated "JOSEPH CRESSMAN TOBACCO & SEGARS" advertisement on reverse; outbound Maryland; top sheet margin, cut rectangle, acid cancel tied, black Clarke 63b Philadelphia cds tied; Blood's Handstamp Type 17; 3 cent 1851 general issue Scott #11 large bottom sheet margin, Philadelphia cds cancel tied. To: "GW Gail Esqr / No 181 West Pratt St / Baltimore / MD". Lyons collection.
63. February 20, 1854; envelope; local delivery; top margin, cut rectangle, acid cancel tied; Blood's Handstamp Type 17. To: "Abrm. L. Pennock Esq / No 231 High Street / Phil<sup>a</sup>."<sup>13</sup>(1855 McElroys City Directory page 436 lists Abraham L. Pennock, 231 Market) Shachat collection.
64. March 6, (1854); U2 entire envelope; Spring Garden District; top sheet margin, cut rectangle, acid cancel tied; Blood's Handstamp Type 17. To: "James. Shaw Jr / 391 Poplar Str / Above 13<sup>th</sup> / Philadelphia / Pa". Gibbons Merker 5 October 11, 1974 lot 1297; Gibbons Merker 8 September 24, 1976 lot 3885.
65. March 25, (1854); envelope; outbound Wisconsin; bottom left sheet margin corner, cut rectangle, acid cancel; Blood's Handstamp Type 17; 3 cent 1851 general issue Scott #11, black Clarke 63b Philadelphia cds tied. To: "The Rev. / W<sup>m</sup> Markoe / Delafield / Wisconsin". Siegel 927 December 20, 2006 lot 1134, Richardson.
66. March 25, (1854); folded letter; local delivery; right margin, cut rectangle, acid cancel tied, black Clarke 63b Philadelphia cds tied, matching numeral 1 in double octagon; Blood's Handstamp Type 17. To: "Charles Perkins / Box 253 / Post office / Phil".<sup>14,15</sup> Siegel 925 November 15, 2006 lot 1337, Kuphal. May 11, 2010 PFC 486735. Morris collection.

---

<sup>13</sup> 1855 McElroy's City Directory, page 436 lists Abraham L. Pennock, 231 Market

<sup>14</sup> 1855 McElroy's City Directory, page 437 lists Charles Perkins, cordw. 75 F road.

67. April 6, 1854; dated folded letter; outbound Ohio; cut rectangle, acid cancel tied, blue Hudson O. APR/28 cds tied; Blood's Handstamp Type 17; black Clarke 76a Philadelphia cds,<sup>16</sup> matching italicized numeral "5" handstamp; black Ashland O. APR/12 cds; manuscript "*Top 5/10*" and "*Tie 5/15*". To: "Miss Harriett Blein / ~~Ashland~~ / Ohio. / Middlebury / ~~Hudson~~". Siegel 825 June 27, 2000 lot 1621, Schwartz; Siegel 927 December 20, 2006 lot 1133. August 10, 2010 PFC 489180. Morris collection.
68. June 23, (1854); small ladies envelope; outbound New Jersey; damaged cut rectangle, acid cancel tied; Blood's Handstamp Type 17; 3 cent 1851 general issue Scott #11 left sheet margin, black Clarke 63b Philadelphia cds cancel tied; manuscript "*Paid*". To: "Miss Sissie Dade / Care of Dr. ---- / Lawrenceville / - N.Jersey". Wolffers 53 December 10, 1976 lot 683.
69. August 22, (1854); front; outbound Massachusetts; (black on bluish) cut rectangle, portion of stamp below, acid cancel tied, black Clarke 63b Philadelphia cds tied; Blood's Handstamp Type 17; 3 cent 1851 general issue Scott #11, Philadelphia cds cancel tied. To: "Miss / Sarah E Forbes / East Brookfield / Mass". Alexander collection.
70. August 23, 1854; envelope; outbound Pennsylvania; bottom margin, cut rectangle, acid cancel, black Clarke 63b Philadelphia cds tied; Blood's Handstamp Type 17; 3 cent 1851 general issue Scott #11, Philadelphia cds cancel tied; manuscript reverse "*Recd aug. 24. 1854. / Thursday*". To: "H,M, North Esqr / Columbia / Lancaster Co. / P<sup>a</sup>." Corwin collection.
71. September 5, 1854; folded letter; local delivery; cut rectangle, acid cancel tied; Blood's Handstamp Type 17. To: "Mr G Taylor / Meisith Store / Dr 78 Heath Street / above Arch St- West / Side". Kelleher 674 October 26, 2015 lot 261. Morris collection.
72. September 13, (1854); envelope; outbound South Carolina; cut rectangle, portion of stamp below, acid cancel; Blood's Handstamp Type 17; black Clarke 76a Philadelphia cds. To: "Miss Rebekah R Moses / Care of Col Franklin Moses / Sumterville / South Carolina".<sup>17</sup> Stromberg collection.
73. September 15, 1854; folded letter; local delivery; bottom sheet margin, cut rectangle, acid cancel tied; Blood's Handstamp Type 17. To: "Messrs C. Schrack & Co. / 4<sup>th</sup> st near Cherry / W.S. / Phil<sup>a</sup>".<sup>18</sup>

---

<sup>15</sup> Steven M. Roth, "Blood's Despatch Revisited" *The Penny Post*, Vol. 1, No. 4, November 1991, pages 16, 17.

<sup>16</sup> Earliest recorded Clarke 76a.

<sup>17</sup> August 19, 2016 email communication Harlan Greene of the Addleston Library, College of Charleston, South Carolina.

<sup>18</sup> 1855 McElroy's City Directory of Philadelphia, page 489 lists "varnish and paint manuf., 80 N 4<sup>th</sup>."

74. September 20, (1854); envelope; outbound Massachusetts; bottom margin, cut rectangle, acid cancel tied, black Clarke 63b Philadelphia cds tied; Blood's Handstamp Type 17; 3 cent 1851 general issue Scott #11, Philadelphia cds cancel tied. To: "J.P. Chandler Esq. / Brookline / Mass." Pollitz February 5, 1955 lot 84; Ivy Manning 96 March 17 2005 lot 2391. Morris collection.
75. October 30, 1854; envelope; outbound Michigan; bottom margin, cut rectangle, acid cancel tied; Blood's Handstamp Type 19;<sup>19</sup> black Clarke 76a Philadelphia cds. To: "Mr James, Johnson / Coldwater / Branch, County / Michigan". Stromberg collection.
76. November 3, (1854); envelope; outbound Pennsylvania; cut rectangle, portion of left stamp, acid cancel tied, black Clarke 76a Philadelphia cds tied; Blood's Handstamp Type 17. To: "Dr May / Holmesburg / Present".<sup>20</sup> Bennett 328 June 27, 2008 lot 411. Morris collection.
77. December 14, 1854; envelope; Spring Garden District; top right corner margin, cut rectangle, acid cancel; Blood's Handstamp Type 19. To: "L.R. Fletcher Esq. / S.E. Cor. 13<sup>th</sup> & Spring / Garden".<sup>21</sup> Corwin collection.
78. December 20, (1854); envelope; outbound Pennsylvania; cut rectangle, acid cancel tied; Blood's Handstamp Type 17; 3 cent 1851 general issue Scott #11, black Clarke 63b Philadelphia cds tied; manuscript "*Mr Spangler*". To: "Col. D.W. Patterson / Lancaster / Pa".
79. December 24, (1854); envelope, albino embossed "William Procter Pharmaceuticals" advertisement corner; outbound Tennessee; cut rectangle, acid cancel tied, black Clarke 63b Philadelphia cds tied; Blood's Handstamp Type 17;<sup>22</sup> 3 cent 1851 general issue Scott #11, Philadelphia cds tied three times; manuscript "*M<sup>rs</sup> Young*". To: "M<sup>rs</sup> William W Young / Mrs William. W. Young / in care of W<sup>m</sup>. W. Young. Esq / Memphis Tenn". Morris collection.
80. June 4, (1852-54); folded cover; local delivery; large right sheet margin, cut rectangle, acid cancel tied; Blood's Handstamp Type 17. To: "Mr Jarvis Mason / 35 South Juniper st".<sup>23</sup> Corwin collection.
81. June 4, (1852-54); small embossed envelope; outbound Pennsylvania; right margin, cut trapezoid, portion of stamp below, acid cancel tied; Blood's Handstamp Type 17; 3 cent 1851 general issue Scott #11 pen cancel, black Hummelstown JUN/15 cds (cancel) tied; manuscript "*Missent for*", "*Paid 3*",

---

<sup>19</sup> Second earliest recorded by twelve days following a 15L13 example.

<sup>20</sup> 1856 McElroy's City Directory lists Newton May MD, Holmesburg.

<sup>21</sup> 1855 McElroy's City Directory page 175 lists L.R. Fletcher, atty, S E 13<sup>th</sup> & Sp Garden.

<sup>22</sup> Latest except far outliers.

<sup>23</sup> 1858 McElroy's City Directory, page 452 lists Jarvis Mason, clerk, 304 Walnut, h 330 S Juniper.

and “*Answered / Sure Ex*”. To: “Mr. John. Weist. Jr / Uniontown / Dauphin Co / Pa.” Siegel 954 April 10, 2008 lot 3134.

82. June 30, (1852-54); envelope; Northern Liberties District; cut rectangle, acid cancel tied; Blood’s Handstamp Type 17; manuscript “*Williamson / Murphy’s Light*”. To: “Robert M. Logan Eqr / Consellor at Law / 286 North 3<sup>rd</sup> (St)”.<sup>24</sup> Phillips 9 March 16, 1976 lot 847.
83. September 2, (1852-54); envelope; local delivery; cut rectangle, acid cancel tied; Blood’s Handstamp Type 17. To: “Mr Thomas N attson / Care of Messrs Triutt & Bro / Mkt St abov 4<sup>th</sup> Sts / Phil”.<sup>25</sup> Morris collection.
84. September 5, (1852-54); envelope; Spring Garden District; cut rectangle, acid cancel tied; Blood’s Handstamp Type 17. To: “Nathan R Potts / atty at Law / N<sup>o</sup> 34 Spring Garden St / Philada”.<sup>26,27</sup> Harmer 85 July 11, 2010 lot 916. September 16, 2010 PFC 490222. Morris collection.
85. September 7, (1852-54); envelope; local delivery; top margin, cut rectangle, acid cancel tied, Blood’s Handstamp Type 17 tied. To: “E.S. Jenet Miller, Esq. / 99 S. 4<sup>th</sup> St”.<sup>28</sup> JKaufmann December 15, 1973 lot 323. Corwin collection.
86. September 14, (1852-54); folded letter; local delivery; cut rectangle, acid cancel tied; Blood’s Handstamp Type 17. To: “Hiram Ellis Esq<sup>r</sup> / Blood’s dispatch / Philadelphia”.<sup>29</sup> Shachat collection.
87. September (1852-54); small envelope; outbound Rhode Island; cut rectangle, acid cancel tied; Blood’s Handstamp Type 17; 3 cent 1851 general issue Scott #11, indistinct Philadelphia cds tied. To: “For / Rachel Daudon / care of Job Williams / Newport”/ (Rhode Island). Gold Medal February 7, 1968 lot 836.
88. October 5, (1852-54); folded letter; local delivery; cut rectangle, acid cancel tied; Blood’s Handstamp Type 17. To: “Mer Rich<sup>d</sup> Garwood / care of / Jos. S. Sreoreder Esq / 224 S. 10<sup>th</sup> st”. Hyers December 15, 1977 lot 307.
89. November 9, (1852-54); envelope; local delivery; right margin, cut rectangle, acid cancel tied; Blood’s Handstamp Type 17. To: “Mr. Leighton Coleman / at

---

<sup>24</sup> 1856 McElroy’s City Directory, lists Robert M Logan, atty. and coun 286 N 3d.

<sup>25</sup> 1855 McElroy’s City Directory, page 564 lists TRUITT, BROTHER & CO; hardware, 167 and 171 Market.

<sup>26</sup> Vernon R. Morris Jr, MD, “Blood’s Part 1: 15L2,” *The Penny Post*, Vol. 21, No. 1, Whole No. 82 January 2013, pages 30, 33, 36, 37.

<sup>27</sup> Vernon R. Morris, Jr., MD, “Blood’s Part 3: 15L3,” *The Penny Post*, Vol. 21, No. 3, July 2013, Whole No. 84, pages 41, 46, 56, 57, 59.

<sup>28</sup> 1856 McElroy’s City Directory, page 446 lists E.SPENCER MILLER, atty. & coun, 99 S 4<sup>th</sup>.

<sup>29</sup> 1855 McElroy’s City Directory, page 156 lists Hiram Ellis, agent, N W 3d and Chestnut, h 144 S 12<sup>th</sup>.

/ Messrs: Thurlo, Hughes & Cos / No. 11 No: 5<sup>th</sup> St. / Philadelphia”. Snow collection.

90. November 29, (1852-54); small envelope; outbound North Carolina; damaged cut rectangle, portion of right stamp, acid cancel tied; Blood’s Handstamp Type 17; 3 cent 1851 general issue Scott #11, pen “Way” cancel. To: “For / Paul C Cameron Esqr.- / Stayville P.O.- / Orange County- / N. Carolina”. Stromberg collection.
91. December 2, (1852-54); front; Moyamensing District; large right sheet margin, cut rectangle, acid cancel tied; Blood’s Handstamp Type 17. To: “Mr. C Gm: J. Lennard / 11<sup>th</sup> & Fitzwater”. Alexander collection.
92. December 3, (1852-54); envelope; outbound Washington D.C.; right margin, cut rectangle, acid cancel tied; Blood’s Handstamp Type 17; 3 cent 1851 general issue Scott #11, pen “Way” cancel. To: “Miss Anna C. ---- / Care. Mr. Ros -- / Washing”(ton) / “D.”(C.).
93. December 8, (1852-54); small envelope; local delivery; cut rectangle, acid cancel tied; Blood’s Handstamp Type 17. To: “E. Spence Miller Esqr. / No. 99 South 4<sup>th</sup> street / above Spruce st. East- Side”. Snow collection.
94. December 9, (1852-54); envelope; Spring Garden District; (black on bluish) cut rectangle, acid cancel tied; Blood’s Handstamp Type 17. To: “James Shaw Jr / 391 Poplar St ab 13<sup>th</sup> st / Phila” ”<sup>30</sup>
95. December 19, (1852-54); envelope; local delivery; cut rectangle, portion of stamp above, acid cancel tied; Blood’s Handstamp Type 17. To: “Dr. Wm. Darrach, / 268 Arch St.- / near 10<sup>th</sup>. St. / Philada.”<sup>31</sup> Alexander collection.
96. December 30, (1852-54); envelope; Spring Garden District; cut rectangle, portion of left stamp, acid cancel tied; Blood’s Handstamp Type 17. To: “Richard Peterson Esq / Care of / Wm. P. Cresson & Co / Iron Foundry / Willow ab. 13<sup>th</sup>..”
97. January 6, (1853-54); damaged envelope at left; outbound Maryland; (black on bluish) cut rectangle, portion of stamp above, acid cancel tied; Blood’s Handstamp Type 17; manuscript “Way 5” and “42”. To: “Campbell. Morfit- Esqr. / of Bank Lane / Baltimore / Md”. Shachat collection.
98. January 19, (1853-54); envelope; outbound Ohio; cut rectangle, acid cancel tied, Clarke 63 Philadelphia cds tied; Blood’s Handstamp Type 17; 3 cent 1851 general issue Scott #11, Philadelphia cds cancel tied. To: “R.S.

---

<sup>30</sup> 1856 McElroy’s City Directory, page 577 lists SHAW JAMES Jr, daguerreotypist 128 Arch, h 639 Poplar.

<sup>31</sup> 1858 McElroy’s City Directory, page 150 lists William Darrach MD 1120 Arch).

Duncanson / Artist. / Cincinnati. / Ohio". Spelman 28 November 4, 1977 lot 536. Ex Gibson.

99. January 24, (1853-54); envelope; outbound Pennsylvania; cut rectangle, portion of stamp above, acid cancel, Clarke 63 Philadelphia cds tied; Blood's Handstamp Type 17; 3 cent 1851 general issue Scott #11 Philadelphia cds cancel tied. To: "Catherine E Steigerone / East line Street / Lancaster". Wolfers 100 October 28, 1981 lot 1540.
100. February 4, (1853-54); (envelope); outbound unknown; cut rectangle, acid cancel tied; Blood's Handstamp Type 17; 3 cent 1851 general issue Scott #11, Clarke 63 Philadelphia cds cancel tied. To: "----- Kassan ----" / Unknown #6. Kover King 48 May 26, 1976 lot 8.
101. February 15, (1853-54); ornate envelope; local delivery; bottom left margin straddle pane, cut rectangle, acid cancel tied; Blood's Handstamp Type 17. To: "Mr Nathan Peterson / N° 153 Arch st / Philadu". Siegel 853 December 19, 2002 lot 2631. April 27, 2010 PFC 486188. Morris collection.
102. February 15, (1853-54); large blue ornate envelope, valentine enclosure; local delivery; **three singles**, cut rectangles, acid cancel tied. To: "Miss Mary & / care of / W<sup>m</sup> S Mintzer / No. 83 North 3<sup>rd</sup> St."<sup>32</sup> February 3, 2010 PFC 484017. Morris collection.
103. February 21, (1853-54); (envelope); unknown; cut rectangle, acid cancel tied; Blood's Handstamp Type 17. To: " -- (Mer)edith ----" / Unknown #7. Phillips November 1981 lot 346.
104. February 23, (1853-54); envelope; local delivery; right margin, cut rectangle, acid cancel tied; Blood's Handstamp Type 17. To: "Mr James Kay / at Mr Dummings / No 26 north 7<sup>th</sup> st. / West side".<sup>33</sup> Stromberg collection.
105. March 21, (1853-54); envelope; local delivery; cut rectangle, acid cancel tied; Blood's Handstamp Type 17; manuscript "*Markland / 51 S. 5<sup>th</sup>.*" To: "Wm. M. Meredith Esq / 9 York Buildings / Walnut St. below 8<sup>th</sup> / South Side." Stromberg collection.
106. April 12, (1853-54); "C.J. FELL & BRO" advertisement envelope; local delivery; cut rectangle, portion of right stamp, acid cancel tied; Blood's Handstamp Type 17. To: "N.B. Brown Eqr / 5th below Chesnut"<sup>34</sup> Stromberg collection

---

<sup>32</sup> 1856 McElroy's City Directory, page 452 lists MINTZER WM.G fly nets & coach lace 83 N 3d, h 3d ab Washington.

<sup>33</sup> 1856 McElroy's City Directory, page 171 lists Charles Dummig imp. Musl instr. 207 Chestnut, & N8<sup>th</sup>, h 92 N 7<sup>th</sup> ab Cherry.

<sup>34</sup> 1856 McElroy's City Directory, page 73 lists N.B.Browne, attyn 33 S 5<sup>th</sup>.

107. April 14, (1853-54); folded cover; Northern Liberties District; top sheet margin, cut rectangle, acid cancel tied, Blood's Handstamp Type 17 tied. To: (John) "Austin Esq / N. 4<sup>th</sup> – St" / (Philadelphia). <sup>35</sup> HR Harmer 1069 March 20, 1957 lot 1957, Caspary; Siegel 433 June 12, 1973 lot 1321.
108. May 9, (1853-54); envelope; local delivery; top sheet margin, cut rectangle, acid cancel tied; Blood's Handstamp Type 17. To: "L.W.Brickner / N<sup>o</sup> 19 South / Water st."
109. February 14, 1855; PENNSYLVANIA RAILROAD illustrated map envelope; outbound Delaware; cut rectangle, acid cancel tied; Blood's Handstamp Type 19; 3 cent 1851 general issue Scott #11A, black (Clarke 63b) Philadelphia cds cancel tied; Wilmington backstamp. To: "Thomas B. Danack Eq / Wilmington / Delaware". Colby November 27, 1951 lot 90; WFox April 10, 1974 lot 69; Siegel 927 December 20, 2006 lot 1132, Richardson; Siegel 1063 December 19, 2013 lot 1738, Stimmell.
110. June 11, 1855; envelope; outbound Pennsylvania; cut rectangle, acid cancel tied; black Clarke 63b Philadelphia cds, matching FREE handstamp; manuscript "*He He accept / June 12<sup>th</sup> / 55,*" and "*Circulation of, / Allegheny City / we're preferred Stock*" and "*Ino Covode / M C*". To: "McCunnaophy Eq / Getteysburg / Adams Co / Penna". Corwin collection.
111. March 8, (1854-55); envelope; outbound Virginia; bottom sheet margin, cut rectangle, acid cancel tied; Blood's Handstamp Type 17; black Clark 76a Philadelphia cds. To: "Mr Murray Forber / Falmouth / Va". Corwin collection.
112. August 26, (1854-55); envelope; outbound Maryland; cut rectangle, acid cancel tied, black Clark 76a Philadelphia cds tied. To: Unknown #8 / Maryland. RKaufmann October 1979 lot 326.
113. August 28, (1854-55); envelope reduced at left; Spring Garden District; acid cancel tied; black Clarke 63b Philadelphia cds, matching numeral 1 in double octagon. To: "Dr. Lassiter / Eastern Penitentiary / Coates St & 24<sup>th</sup>". <sup>36</sup> Metro 42 May 21, 1978 lot 64.
114. February 7, 1856; envelope; outbound Pennsylvania; damaged cut rectangle, acid cancel tied, black Clarke 63b Philadelphia cds tied; Blood's Handstamp Type 19; 3 cent 1851 general issue Scott #10, Philadelphia cds cancel tied. To: "Miss Catherine Majerold / Eastern district / Lancaster Pa". Stamps Info 76 May 25, 1977 lot 194.

---

<sup>35</sup> 1856 McElroy's City Directory, page 18 lists John Austin, brass founder 400 N 3d.

<sup>36</sup> 1855 McElroy's City Directory, page 307 lists D W Lassiter MD Resident physician E Penitentiary.

115. March 6, 1856; U6 entire envelope; outbound Pennsylvania; cut rectangle, acid cancel tied; Blood's Handstamp Type 19; black Clarke 63b Philadelphia cds. To: "Rev. A.S. Wallace / MKeesport / Alleghany Co / Penn<sup>a</sup>." Stromberg collection.
116. March 6, 1856; envelope; local delivery; right margin, cut rectangle, acid cancel tied; Blood's Handstamp Type 19. To: "P,M' Ball Esq / Philadelphia / 100 South 4<sup>th</sup> Street." <sup>37</sup> Lyons collection.
117. April 5, 1856; mourning envelope; outbound Washington D.C.; (black on bluish) cut rectangle, acid cancel tied, Clarke 63b Philadelphia cds tied; 3 cent 1851 general issue Scott #11, Philadelphia cds cancel tied. To: "M<sup>rs</sup>-John Calvert / 335 G Street / Washington City --". Wolffers 100 October 30, 1981 lot 1541.
118. March 24, (1854-56); blue illustrated "NORTH, CHASE & NORTH IRON FOUNDERS" negative corner advertisement envelope; local delivery; cut rectangle, acid cancel tied, black Clarke 63b Philadelphia cds tied; matching numeral 1 in double octagon. To: "Mr Samuel Agnew"/ (Philadelphia).<sup>38</sup> Apfelbaum 390 December 9, 1975 lot 640.
119. September 21, (1854-56); envelope slightly reduced at bottom; Spring Garden District; cut rectangle, acid cancel tied, numeral 1 in double octagon tied; matching Clarke 63b Philadelphia cds. To: "Doctor. Lacetty / Penitentiary House / Coates St / Philadelphia". February 4, 2003 PFC 394300. Morris collection.
120. November 11, (1854-56); envelope; Spring Garden District; left margin, cut rectangle, acid cancel tied, black Clarke 63b Philadelphia cds tied; Blood's Handstamp (Type 17); matching numeral 1 in double octagon. To: "Dr D.W. Lasiter / Eastern Penitentiary" / (Philadelphia). Loews Christies June 20, 1984.
121. January 5, 1857; envelope; outbound Pennsylvania; top sheet margin, cut rectangle, portion of stamp below, acid cancel tied; Blood's Handstamp Type 19; 3 cent 1851 general issue Scott #11, black Clarke 63b Philadelphia cds cancel tied. To: "Miss Maggie Schall / Care of Ben. S. Molle / ,Bethlehem / Penna". Ex Bowman. Morris collection.
122. July 5, 1857; envelope; local delivery; cut rectangle, acid cancel tied; Blood's Handstamp Type 19; black Clarke 63b Philadelphia cds, matching numeral 1 in double octagon. To: "C / Box 318 Phil<sup>a</sup> P.O." Stromberg collection.
123. August 19, (1857); envelope; outbound New Jersey; cut rectangle, portion of left stamp, acid cancel tied; Blood's Handstamp Type 19; 3 cent 1851 general

---

<sup>37</sup> 1856 McElroy's City Directory, page 24 not listed.

<sup>38</sup> 1856 McElroy's City Directory lists Samuel Agnew as publisher, 12 N 11<sup>th</sup>.

issue Scott #11 right sheet margin, black Clarke 63b Philadelphia cds cancel tied; manuscript “PAID” and “*please answer by / in time of Mail*”. To: “Ezra Coreley Esqr / Absecon / Sheriff of – atlantic County / New Jersey”. Kover King 25 January 12, 1974 lot 426.

124. October 12, 1857; cover with contents; (local delivery); cut rectangle, acid cancel tied; Blood’s Handstamp Type 19. To: Unknown #9 / (Philadelphia). Kover King 48 May 26, 1976 lot 10.
125. December 15, 1857; cover with contents; (local delivery); cut rectangle, acid cancel tied; Blood’s Handstamp Type 21.<sup>39</sup> To: Unknown #10 / (Philadelphia). Kover King 48 May 26, 1976 lot 9.
126. December 25, (1857); envelope; outbound Washington D.C.; cut rectangle, portion of right stamp, acid cancel tied; Blood’s Handstamp Type 21; two single 3 cent 1857 general issue Scott #26, each grid in circle cancel; black Clarke 63b Philadelphia cds.<sup>4037</sup> (Tom Clarke Interim 2012 page 27 reports the latest recorded black Clarke 63b is July 3, 1858) To: “To / M<sup>r</sup>. John Calvert / 261 J. Street / Washington / D.C.” Lowe Christies 5075 September 10, 1981 lot 758; Bennett 255 February 5, 2003 lot 3605. April 29, 2003 PFC 396901. Morris collection.
127. October 10, (1854-57); small embossed envelope; outbound Pennsylvania; cut rectangle, acid cancel tied; 3 cent 1851 general issue Scott #11, black Clarke 63b Philadelphia cds cancel tied. To: “Messrs E.A.B Wambold / Bunker Hill / Bucks Co, / Pa.”. Stromberg collection.
128. November 30, (1854-57); envelope; outbound Pennsylvania; cut trapezoid, acid cancel tied; Blood’s Handstamp Type 19; 3 cent 1851 general issue Scott #11, black Clarke 63b Philadelphia cds cancel tied. To: “For the Reverend / Chas Nest Thompson / York- / Penna”. Alexander collection.
129. February 2, (1855-57); black negative “MERCHANTS HOTEL.” corner advertisement envelope; Spring Garden District; cut rectangle, (uncancelled), Clarke 63b Philadelphia cds tied; matching numeral 1 in double octagon. To: “Rev. A.H. Hunter / Ph<sup>a</sup>.”<sup>41</sup> Rumsey 35 November 17, 2009 lot 1977. December 17, 2009 PFC 482362. Morris collection.
130. January 7, (1858); envelope; outbound Georgia; cut rectangle, portion of right stamp, (uncancelled), black Clarke 63b Philadelphia cds tied; Blood’s Handstamp Type 19; 3 cent 1851 general issue Scott #11, black Philadelphia

---

<sup>39</sup> Earliest recorded Handstamp Type 21, November 24, 1857 addressed to Whiting, courtesy Marc Stromberg.

<sup>40</sup> Tom Clarke Interim 2012 page 27 reports the latest recorded black Clarke 63b is July 3, 1858.

<sup>41</sup> 1855 McElroy’s City Directory, page 262 lists Rev. H.A. Hunter, 27 Melon.

cds cancel tied.. To: "De W (-----)" / (Georgia). Siegel 458 September 21, 1974 lot 1478.

131. August 13, 1858; envelope / outbound Rhode Island; cut rectangle, portion of left stamp, acid cancel tied; Blood's Handstamp Type 19; 3 cent 1851 general issue Scott #10, (Clarke 63b) Philadelphia cds cancel tied. To: "Elisa C. Collins / care of Job Wilbour / Newport / Rhode Island." Winter October 24, 1973 lot 121.
132. --13, (1858); envelope; local delivery; damaged cut rectangle, acid cancel tied; Blood's Handstamp Type 21. To: "JW Ryen Esq / Tioga Railroad officc / 1<sup>st</sup> Story Exchange".<sup>42</sup> Phillips March 6, 1976 lot 833.
133. August 23, (1853-58); envelope; outbound (Pennsylvania); cut rectangle, acid cancel tied, Clarke 63 Philadelphia cds tied; 3 cent 1851 general issue Scott #10, Philadelphia cds cancel tied. To: M<sup>r</sup> Tor-- / Marsh -- / Chest--" / (Pennsylvania). Gibbons Merker 5 October 10, 1974 lot 1299; Gibbons Merker 8 September 24, 1976 lot 3887.
134. September 2X, (1853-58); U6 entire envelope; outbound New Jersey; cut rectangle, acid cancel tied; Clarke 63 Philadelphia cds. To: "Rev C.S. Concling, M<sup>t</sup> Pleasant, / New Jersey." Gibbons Merker 8 September 24, 1976 lot 3885.
135. January 13, (1855-58); envelope; outbound New York; cut rectangle, acid cancel tied; Blood's Handstamp Type 19; 3 cent 1851 general issue Scott #11, black Clarke 63b Philadelphia cds cancel tied. To: "Mr. William Harris / Care of Rev<sup>r</sup>- L. Maitland Eqr / No 63 Beaver St / New York".
136. January 21, (1855-59); (black) negative "ANSPATCH, JACOBY & CO DRY GOODS" illustrated corner advertisement envelope; local delivery; damaged cut rectangle, acid cancel tied; Blood's Handstamp Type 19. To: "EF Chase Es / No. 77. South 5<sup>th</sup> St / Ph".<sup>43</sup> Eastland June 23, 1978 lot 567.
137. June 1, 1860; orange envelope; local delivery; top margin, cut rectangle, acid cancel tied, Blood's Handstamp Type 21 tied. To: "(Henry) Ash. / (18 Lomb)ard Street."<sup>44</sup> HR Harmers 2352 July 22, 1976 lot 1335.
138. August 6, 1861; illustrated flag patriotic envelope reduced at right; outbound Pennsylvania; cut rectangle, acid cancel tied; Blood's Handstamp Type 21; black Clarke 101 Philadelphia cds;<sup>45</sup> 3 cent 1857 general issue Scott #26,

---

<sup>42</sup> 1855 McElroy's City Directory, page 482 lists RYAN JOHN W., manuf. alcohol, camphene & burning fluid, Washington ab Swanson, h 510 S Front.

<sup>43</sup> 1858 McElroy's City Directory, page 108 lists Edwin T. Chase, atty. & cun. 530 Walnut.

<sup>44</sup> 1856 McElroy's City Directory, page 15 George Ash, carp, 18 Lombard.

<sup>45</sup> Clarke Interim 2012 listed from August 7, 1860 until January 13, 1865.

circle of dots cancel. To: "Miss Debbie Pen Thomas / Western Seminary / Chester Co / Street Road / Penn<sup>a</sup>." Lowe June 11, 1981 lot 10.

139. Undated; large envelope; local delivery; **five singles** (black on bluish), one partially torn, four cut rectangles, acid cancel tied; Blood's Handstamp Type 23. To: "Mr Henery Long / No 227 Chesnut St / Present".<sup>46</sup> Gronowski collection.
140. Undated; large embossed envelope, valentine enclosure; local delivery; cut rectangle, acid cancel tied. To: "Dr Lewis / Spruce Street / Phil<sup>a</sup>".<sup>47</sup> HR Harmers 2352 July 22, 1976 lot 1335; Siegel 925 November 15, 2006 lot 133, Kuphal. January 27, 2010 PFC 483756. Morris collection.
141. Undated; white envelope; outbound Massachusetts; cut rectangle, acid cancel, tied by blue Philadelphia cds; 3 cent 1851 general issue Scott #11, Philadelphia cds cancel tied. To: "Unknown #11" / (Russell, Massachusetts). HR Harmer 1069 March 20, 1957 lot 595. NO PHOTO
- A. July 19, 1859; U6 entire envelope; local delivery; top margin, cut rectangle, acid cancel; July 19, 1959 Baltimore cds; non-contemporaneous manuscript "6/19/59". To: "S<sup>t</sup> Ge<sup>o</sup> J. Campbell Esqr / South 4<sup>th</sup> St / Philadelphia". Bowman collection.

Blood's Penny Post could not possibly deliver government mail from Baltimore. The usual Blood's Handstamp is absent, and the local adhesive stamp is not tied to cover by acid or handstamp. *15L15 was added to the cover decades later.*

- B. August 7, (1854); folded letter; outbound New York; bottom sheet margin, cut trapezoid, cork cancel tied; 3 cent 1851 general issue Scott #11A, black Clarke 63b Philadelphia cds cancel tied. To: "S.H. Lambdin Esq / of Natchez / Pierpont House / Brooklyn / N.Y." August 27, 2013 PFC 513656 opinion is fraudulent cancel.

No other Blood's issues had been cancelled by cork. Also conspicuous is no Blood's Handstamp marking. Strike three is no typical acid cancellation. Strike four is PFC opinion. Otherwise, this cover is a genuine Philadelphia outbound New York letter with appropriate government markings.

- C. July 8, (1853); envelope; outbound New Hampshire; cut rectangle, acid cancel, (cork cancel tied); Blood's Handstamp Type 17; 3 cent 1851 general issue Scott #11, blue (Clarke 63a) Philadelphia cds cancel tied. To: Unknown #12 / (New Hampshire). Harmer March 16, 1971 lot 1411; Phillips August 14, 1974 lot 541.

---

<sup>46</sup> 1858 McElroy's City Directory, page 401 Henry E. Long, acct. 727 Chestnut.

<sup>47</sup> 1858 McElroy's City Directory, page 393 William D Lewis Jr, president N Branch Coal Co, S 4<sup>th</sup> & Willings al, h 1621 Spruce.

No.	DATE	COVER	15L15	CANCEL	TIED	LABEL	FEDERAL STAMPS & MARKS	ADDRESSEE	OUTBOUND	No.
1	May 13, 1852	printed notice	(black on bluish) cut rectangle	acid	acid	-	Bloods handstamp Type 18 (ASCC old Type 14) printed "Circular"	Unknown #1 (Philadelphia)	no	1
2	June 30, 1852	dated folded letter	cut rectangle portion of stamp below	acid	acid & blue cds	-	3 cent 1851 Scott 11, blue Clarke Phila 63a cds cancel tied	W <sup>th</sup> Hackett Esquire / Comp / Easton Bank / Easton / Penn <sup>a</sup>	Pennsylvania	2
3	April 16, (1853)	envelope	cut rectangle	acid	acid & blue cds	-	Bloods handstamp Type 17; blue Clarke 75a Phila cds NY B <sup>8</sup> PK <sup>T</sup> and "20"; reverse AACHEN and blue AUSGABE manuscript red "1059," "30," and "13"; reverse blue "11"	Mr Adu Roi / Doctor of Law / Braunsweig / Germany	GERMANY	3
4	April 18, 1853	dated bill	cut rectangle	acid	acid & blue cds	-	3 cent 1851 Scott 11, blue Clarke (62) Phila cds cancel tied manuscript "H Reagle"	Mr John Knotte / Wheelin Va	Virginia	4
5	April 19, (1853)	envelope	cut rectangle	acid	acid	-	Blood's handstamp Type 17 blue Clarke 62 Phila cds; NY B <sup>8</sup> PK <sup>T</sup> manuscript blue "26" and "4", black "60" and "62 3/4"	Fromm / W.Th. Burgmer & Comp / Runiggreif Wolfgaborau / Preussen / Duets	PRUSSIA	5
6	May 6, 1853	envelope	partially torn rectangle	acid	acid	-	manuscript "6 May 1853"	Chas. J. Biddle Esq. / 7th above Walnut / East Side	no	6
7	May 6, (1853)	envelope	top margin cut rectangle	acid	acid	-	Bloods handstamp Type 17 3 cent 1851 Scott 11, blue Clarke (62) Phila cds cancel tied	Mr John Togert / Paterson. / New Jersey	New Jersey	7
8	June 1, 1853	dated folded cover	(blue on Lilac) cut rectangle	acid	acid	-	blue Clarke 75a Philadelphia cds	M <sup>r</sup> . (L.B.) Hunter / Princeton / New. Jersey.	New Jersey (GREEK origin)	8
9	June 14, 1853	dated folded letter	cut rectangle	acid	acid	-	Blood's handstamp Type 17	M <sup>r</sup> . Cha <sup>s</sup> Kochersperger / South East corner of Broad & Wallace Sts.	Spring Garden District	9
10	June 25, (1853)	envelope	cut rectangle	acid	acid	-	Bloods handstamp Type 17; manuscript "Valuable" 3 cent 1851 Scott 11, (blue) Clarke 63a Phila cds cancel tied	Miss Christina B. Steel, / Abington, / Montgomery Co. / Pa.	Pennsylvania	10
11	June 27, 1853	dated folded letter	cut rectangle	acid	no	-	Bloods handstamp Type 17 blue Clarke 75a Phila cds; italicized numeral "5" handstamp	Mrs. L. B. Hunter / Princeton / New. Jersey. / U.S. America.	New Jersey (GREEK origin)	11
12	July 1, 1853	folded cover	Top margin, cut rectangle	acid	acid	-	Bloods handstamp Type 17	T Smiley Esq / Insurance & Trust Co / 62 Walnut st / Phila	no	12
13	July 13, (1853)	envelope	cut rectangle	acid	acid	-	Bloods handstamp Type 17 3 cent 1851 Scott 11, blue Clarke 63a Phila cds cancel tied	Mrs Henry Butterfield. / Messrs Butterfield Bro. / No 30 Williams St. / New York.	New York	13
14	July 22, (1853)	folded cover	cut rectangle	acid	acid	-	Bloods handstamp Type 17 3 cent 1851 Scott 11, (blue) Clarke 63a Phila cds cancel tied	R.W. Cameron Esqr / (New York)	New York	14
15	July 22, 1853	dated folded letter	cut rectangle	acid	acid	-	Bloods handstamp Type 17; manuscript "Way 5"	M <sup>r</sup> . J.P. Lee / F P Blair Esq <sup>d</sup> / Washington City / D.C.	Washington, D.C.	15
16	August 3, (1853)	envelope	cut rectangle	acid	acid	-	Bloods handstamp Type 17 3 cent 1851 Scott 11, blue Clarke 63a Phila cds cancel tied	Rev. Dr. Hugh N. Wilson / Hacket's Town- / New. Jersey	New Jersey	16

Table I. Chronological 15L15 data base.

No.	DATE	COVER	15L15	CANCEL	TIED	LABEL	FEDERAL STAMPS & MARKS	ADDRESSEE	OUTBOUND	No.
17	August 10, (1853)	envelope	large bottom sheet margin cut rectangle	acid	acid	-	Bloods handstamp Type 17 blue Clarke 75a Philadelphia cds double strike	Ann W Milhous / Kennett Square / Chester Co. / Pa.	Pennsylvania	17
18	August 20, (1853)	envelope	cut rectangle	acid	acid	-	Bloods handstamp Type 17 3 cent 1851 Scott 11, blue Clarke 63a Phila cds cancel tied	Mess. Snyder & Milnes / Pottsville / P <sup>a</sup> .	Pennsylvania	18
19	August 24, (1853)	damaged U1 envelope	cut rectangle	acid	acid	-	Bloods handstamp Type 17	Jabez M. Fisher Esq. / Steam Mill / Providence / R.I.	Rhode Island	19
20	September 5, (1853)	envelope	large top sheet margin cut rectangle	acid	acid	-	Bloods handstamp Type 17 3 cent 1851 Scott 11, blue Clarke 63a Phila cds cancel tied	Mr. D.P. Cameron / Principio P.O. / Cecil County / Maryland	Maryland	20
21	September 8, 1853	folded cover	cut rectangle	acid	acid	-	Bloods handstamp Type 17 two 3 cent 1851 Scott 11, blue Clarke 63a Phila cds cancel tied	H.W. Halleck Esq <sup>d</sup> / San Francisco / Cal	California	21
22	September 8, 1853	envelope	cut rectangle	acid	acid	-	Bloods handstamp Type 17 manuscript "Sep. 8 <sup>53</sup> / 3/4 of the" and "Now 325 1/2 Arch St"	Charles E. Lex, Esq. / 6 <sup>th</sup> below Arch St. / East Side	no	22
23	September 21, 1853	folded cover	cut rectangle	acid	acid	-	Bloods handstamp Type 17	G. Schrack / 4 <sup>th</sup> Near / Race	no	23
24	September 26, 1853	envelope	cut rectangle	acid	acid	-	Bloods handstamp Type 17 six 3 cent 1851 Scott 11, five blue Clarke 63a Phila cds cancel tied red numeral "19" and Liverpool 1853 transit handstamps reverse Boston Br Pkt transit and ABERDEEN receiving	Lydia A. Barclay / Aberdeen / Scotland	SCOTLAND	24
25	September 30, 1853	envelope	cut rectangle	acid	acid	-	Bloods handstamp Type 17 manuscript "A.J.S. / Sep. 30. 1853."	Mr John. H. Watt. / Care, McCutcheon & Collins. / Front & New Sts. / Philada.	no	25
26	October 4, 1853	damaged envelope	cut rectangle	acid	acid & blue cds	-	Bloods handstamp Type 17 3 cent 1851 Scott 11, blue Clarke 63a Phila cds cancel tied	Mrs (Hunter) / Princeton / N. Jersey	Pennsylvania	26
27	October 5, (1853)	U1 envelope	cut rectangle	acid	acid	-	Bloods handstamp Type 17 blue Clarke 63a Philadelphia cds	M <sup>rs</sup> Selinco Coles / Scottsville / Albemarle Co: / Va.	Virginia	27
28	October 7, (1853)	envelope	cut rectangle	acid	acid	-	Bloods handstamp Type 17 3 cent 1851 Scott 10, blue Clarke 63a Phila cds cancel tied	Mrs. James Boogess, / Messrs Geo. M. Bind & Co. / 14 Broadway / New York	New York	28
29	October 12, 1853	folded cover	cut rectangle	acid	no	-	Bloods handstamp Type 17 three 3 cent 1851 Scott 11, 1 cent Scott 7; blue Clarke 63a cds tied red "U <sup>9</sup> STATES PAID 6" in lozenge reverse London UC, and manuscript "Ref Laty 15. Oct / .53.	Rev.J. Skinner D.D. / London / Canada West --	CANADA WEST	29
30	October 21, 1853	envelope	damaged cut rectangle	acid	no	-	Bloods handstamp Type 17 3 cent 1851 Scott 11, blue Clarke 63a cds Phila cancel tied	Mr <sup>s</sup> Lewis N. Whittle - / Macon - / Georgia -	Georgia	30

Table I. Chronological 15L15 data base. (cont'd)

No.	DATE	COVER	15L15	CANCEL	TIED	LABEL	FEDERAL STAMPS & MARKS	ADDRESSEE	OUTBOUND	No.
31	October 24, 1853	U2 envelope	cut rectangle	acid	acid & blue cds	-	blue indistinct Philadelphia cds	(John) --- Hickman Es / (West Chester)	(Pennsylvania)	31
32	November 9, (1853)	advertisement U4 envelope	bottom margin cut rectangle	acid	no	-	Bloods handstamp Type 17; blue Clarke 63a Phila cds manuscript "post master / will please forward"	Saml. Buckman / Dolinton. P. O. / Bucks Coy / P <sup>8</sup>	Pennsylvania	32
33	November 17, (1853)	advertisement U4 envelope	top margin cut rectangle	acid	acid & blue cds	-	Bloods handstamp Type 17; blue Clarke 63a Phila cds manuscript "Dolington / Bucks Coy P <sup>8</sup> "	Saml Buckman / care of Joseph Heck / Doylestown P.O.- Bucks Coy Pa	Pennsylvania	33
34	December 2, (1853)	(envelope)	cut rectangle	acid	acid & blue cds	-	Bloods handstamp Type 17 3 cent 1851 Scott 11, blue Clarke 63a Phila cds cancel tied	Frances P. Blair Esquire / (Unknown #2)	unknown	34
35	December 13, (1853)	pamphlet	cut rectangle	acid	acid	-	Bloods handstamp Type 17; manuscript "from Ann"	E.K. Price Esq / Arch above 8 <sup>th</sup>	no	35
36	February 24, (1852-53)	envelope	cut rectangle	acid	acid & blue cds	-	Bloods handstamp Type 17; manuscript "Ch 3. Erie RR" 3 cent 1851 Scott 11, blue Clarke 63a Phila cds cancel tied	M S Richards Esq / Penn Street below 5th / Reading / Pa	Pennsylvania	36
37	April 23, (1852-53)	envelope	cut rectangle	acid	acid	-	Bloods handstamp Type 17 3 cent 1851 Scott 11, blue Clarke 62 Phila cds cancel tied	Mrs. Benjamin Rupell / Febancher / Bedford County / Penn <sup>1</sup>	Pennsylvania	37
38	May 5, (1852-53)	(envelope)	cut rectangle	acid	acid	-	Bloods handstamp Type 17; manuscript "Mr J.P.G. Scamper" 3 cent 1851 Scott 11, blue Clarke 62 Phila cds cancel tied	Miss Santa R. Smith / George Town / Kent Co / M <sup>d</sup>	Maryland	38
39	May 7, (1852-53)	envelope	cut rectangle	acid	acid & blue cds	-	Bloods handstamp Type 17 3 cent 1851 Scott 11, blue Clarke 62 Phila cds cancel tied	Nadine R. Cross / Care of William Olson Es / Nassau Street / New York	New York	39
40	June 2, (1852-53)	envelope	cut rectangle	acid	acid	-	Bloods handstamp Type 17; blue Clarke 75a Phila cds	Mr Charles Johns / Bristol / Bucks County / P.a.	Pennsylvania	40
41	June 4, (1852-53)	advertisement envelope	cut rectangle	acid	acid & blue cds	-	Bloods handstamp Type 17 3 cent 1851 Scott 11, blue Clarke 62 Phila cds cancel tied	Mr Hiram Deets / Quakertown Hunterdon Co / New Jersey	New Jersey	41
42	June 4, (1852-53)	(envelope)	cut rectangle	acid	blue cds	-	Bloods handstamp Type 17 3 cent 1851 Scott 11, blue Clarke (75a) Phila cds cancel tied	Miss Clara Bradley / (Unknown #3)	unknown	42
43	June 6, (1852-53)	envelope	cut rectangle	acid	acid Bloods Type 17	-	Bloods handstamp Type 17 3 cent 1851 Scott 11, blue Clarke 62 Phila cds cancel tied	Dr. Jeremy Wilson / Alexandria / Montgomery Co. / Pa.	Pennsylvania	43
44	June 8, (1852-53)	envelope	cut rectangle	acid	acid	-	Bloods handstamp Type 17 3 cent 1851 Scott 11, blue Clarke 62 Phila cds cancel tied	Rev Dr Howe / For Mrs Howe / Bristol / Rhode Island	Rhode Island	44
45	June 9, (1852-53)	advertisement envelope	right margin cut rectangle	acid	no	-	Bloods handstamp Type 17 3 cent 1851 Scott 11, blue Clarke 62 Phila cds cancel tied	James H Devaughn / Alexandria / Va	Virginia	45
46	June 18, (1852-53)	envelope	bottom sheet margin cut rectangle	acid	acid	-	Bloods handstamp Type 17 3 cent 1851 Scott 11, blue Clarke 62 Phila cds cancel tied	Mrs Mary M. Spangler / (Unknown #4)	unknown	46
47	June 20, (1852-53)	envelope	cut rectangle	acid	blue cds	-	Bloods handstamp Type 17; blue Clarke 62 Phila cds	Unknown #5	unknown	47
48	June 24, (1852-53)	narrow envelope	cut rectangle	acid	acid & blue cds	-	blue Clarke 75a Philadelphia cds	M' Juliet W.L. Campbell / Pottsville / Schuylkill Co / Penn <sup>4</sup>	Pennsylvania	48

Table I. Chronological 15L15 data base. (cont'd)

No.	DATE	COVER	15L15	CANCEL	TIED	LABEL	FEDERAL STAMPS & MARKS	ADDRESSEE	OUTBOUND	No.
49	August 23, (1852-53)	envelope	cut rectangle portion of stamp above	acid	acid	-	Bloods handstamp Type 17 3 cent 1851 Scott 11, blue Clarke 63a Phila cds cancel tied	Mrs Miller, / Princeton, / New Jersey	New Jersey	49
50	August 30, (1852-53)	envelope	cut rectangle	acid	acid	-	Bloods handstamp Type 17; manuscript "35"	Mr. Isaac D James / Druggist / Trenton / New Jersey	New Jersey	50
51	September 12, (1852-53)	(front)	cut trapezoid	(acid)	cds	-	Bloods handstamp Type 17 3 cent 1851 Scott 10 left sheet margin, Phila cds cancel tied	Messrs --- Sherbard & Co / N <sup>o</sup> . 15 John Street / New York	New York	51
52	October 25, (1852-53)	envelope	cut rectangle	acid	acid	-	Bloods handstamp Type 17; manuscript "Paid" 3 cent 1851 Scott 11, blue Clarke 63a Phila cds cancel tied	Mrs. H.M. Leinbach / Landisburg / Perry Co. / Pa.	Pennsylvania	52
53	October 27, (1852-53)	envelope	cut rectangle	acid	acid	-	Bloods handstamp Type 17 3 cent 1851 Scott 11, blue Clarke 63a Phila cds cancel tied	S.S. Nichols Esq / Harrisburg / Pa	Pennsylvania	53
54	November 5, (1852-53)	envelope	cut rectangle	acid	acid & blue cds	-	Bloods handstamp Type 17 3 cent 1851 Scott 11, blue Clarke 63a Phila cds cancel tied	Mrs. Ruth P. Kleinkirk. / Xenia, / Ohio	Ohio	54
55	November 8, (1852-53)	(envelope)	cut rectangle	acid	acid & blue cds	-	3 cent 1851 Scott 11, blue Clarke 63a Phila cds cancel tied	Mrs. (Blair) / (Baltimore, Maryland)	Maryland	55
56	November 9, (1852-53)	small envelope	cut rectangle	acid	acid	-	Bloods handstamp Type 17 3 cent 1851 Scott 11, blue Clarke 63a Phila cds cancel tied	Rev. W. Henry Green / Princeton / New Jersey	New Jersey	56
57	November 16, (1852-53)	envelope	cut rectangle	acid	blue cds	-	Bloods handstamp Type 17; manuscript "Answered" 3 cent 1851 Scott 11 corner, blue Clarke 63a Phila cds cancel tied	Miss Lisle Bucher / Harrisburg / Penn <sup>a</sup>	Pennsylvania	57
58	November 28, (1852-53)	envelope	cut rectangle	acid	acid & blue cds	-	Bloods handstamp Type 17; indistinct blue cds on reverse 3 cent 1851 Scott 11, blue Clarke 63a cds Phila cancel tied	M <sup>rs</sup> Eliza Kerr / corner of Madison & Preston Sts. / Baltimore.	Maryland	58
59	January 4, (1854)	envelope	cut rectangle	acid	acid	-	Bloods handstamp Type 17 three 3 cent 1851 Scott 11, black Clarke 63b Phila cds cancel tied	Bofisses C. Morfit / T. Bank Lane / Baltimore / Maryland.	Maryland	59
60	January 5, (1854)	folded cover	cut rectangle	acid	acid & black cds	-	Bloods handstamp Type 17 3 cent 1851 Scott 11, black Clarke 63b Phila cds cancel tied	Mr Isaac Jarrett / Huntsville / Yadkin co / NC	North Carolina	60
61	January 31, (1854)	advertisement envelope	top sheet margin cut rectangle	acid	acid & black cds	-	Bloods handstamp Type 17 3 cent 1851 Scott 11 sheet marg. black Clarke 63b Phila cds cancel tied	GW Gail Esqr / No 181 West Pratt St / Baltimore / MD	Maryland	61
62	February 20, 1854	envelope	top margin, cut rectangle	acid	acid	-	Bloods handstamp Type 17	Abnm. L. Pennock Esq / No 231 High Street / Phil <sup>a</sup> .	no	62
63	March 6, (1854)	U2 envelope	top margin, cut rectangle	acid	acid	-	Bloods handstamp Type 17	James. Shaw Jr / 391 Poplar Str / Above 13th / Philadelphia / Pa	Spring Garden District	63
64	March 25, (1854)	envelope	bottom left corner cut rectangle	acid	no	-	Bloods handstamp Type 17 3 cent 1851 Scott 11, black Clarke 63b Phila cds cancel tied	The Rev. / W <sup>m</sup> Markoe / Delafield / Wisconsin	Wisconsin	64
65	March 25, (1854)	folded cover	right margin, cut rectangle	acid	acid & black cds	-	Bloods handstamp Type 17 black Clarke 63b Phila cds, numeral 1 in double octagon	Charles Perkins / Box 253 / Post office / Phil	no	65

Table I. Chronological 15L15 data base. (cont'd)

No.	DATE	COVER	15L15	CANCEL	TIED	LABEL	FEDERAL STAMPS & MARKS	ADDRESSEE	OUTBOUND	No.
66	April 6, 1854	dated folded letter	cut rectangle	acid	blue Hudson cds acid	-	Blood Type 17; black Clarke 76a Phila cds, numeral "5" handstamp black Ashland cds; light blue Hudson cds manuscript "Top 5/10" and "Tie 5/15"	Miss Harriett Blein / <del>Ashland</del> / Ohio. / Middlebury / <del>Hudson</del>	Ohio	66
67	June 23, (1854)	small ladies envelope	damaged cut rectangle	acid	acid	-	Bloods handstamp Type 17; manuscript "Paid" 3 cent 1851 Scott 11 sheet marg, black Clarke 63b Phila cds cancel tied	Miss Sissie Dade / Care of Dr. --- / Lawrenceville / - N.Jersey	New Jersey	67
68	August 22, (1854)	front	(black on bluish) cut rectang; below stamp	acid	acid & black cds	-	Bloods handstamp Type 17 3 cent 1851 Scott 11, black Clarke 63b Phila cds cancel tied	Miss / Sarah E. Forbes / East Brookfield / <u>Mass</u>	Massachusetts	68
69	August 23, 1854	envelope	bottom margin, cut rectan	acid	acid & black cds	-	Bloods handstamp Type 17; manuscr "Recd aug. 24. 1854 / Thursday" 3 cent 1851 Scott 11, black Clarke 63b Phila cds cancel tied	H.M. North Esqr / Columbia / Lancaster Co. / P <sup>a</sup> .	Pennsylvania	69
70	September 5, 1854	folded cover	cut rectangle	acid	acid	-	Bloods handstamp Type 17	Mr G Taylor / Meisith Store / Dr 78 Heath Street / above Arch St - West / Side	no	70
71	September 13, (1854)	envelope	cut rectange portion of stamp below	acid	no	-	Bloods handstamp Type 17 black Clarke 76a Philadelphia cds	Miss Rebekah R Moses / Care of Col Franklin Moses / Sumterville / South Carolina	South Carolina	71
72	September 15, 1854	folded cover	bottom sheet margin cut rectangle	acid	acid	-	Bloods handstamp Type 17	Messrs C. Schrack & Co. / 4 <sup>th</sup> st near Cherry / W.S. / Phil <sup>a</sup>	no	72
73	September 20, (1854)	envelope	bottom margin cut rectangle	acid	acid	-	Bloods handstamp Type 17 3 cent 1851 Scott 11, black Clarke 63b Phila cds cancel tied	J.P.Chandler Esq. / Brookline / Mass.	Massachusetts	73
74	October 30, 1854	envelope	cut rectangle	acid	acid	-	Bloods handstamp Type 19 black Clarke 76a Philadelphia cds	<u>Mr James, Johnson</u> / Coldwater / Branch, County / Michigan	Michigan	74
75	November 3, (1854)	envelope	cut rectangle portion of left stamp	acid	acid & black cds	-	Bloods handstamp Type 17 black Clarke 76a Phila cds cancel tied	Dr May / Holmesburg / Present	Pennsylvania	75
76	December 14, 1854	envelope	right top corner margin cut rectangle	acid	no	-	Bloods handstamp Type 19	L.R. Fletcher Esq. / S.E. Cor. 13 <sup>th</sup> & Spring / Garden	Spring Garden District	76
77	December 20, (1854)	envelope	cut rectangle	acid	acid	-	Bloods handstamp Type 17; manuscript "Mr Spangler" 3 cent 1851 Scott 11, black Clarke 63b Phila cds cancel tied	Col. D.E. Patterson / Lancaster / Pa	Pennsylvania	77
78	December 24, (1854)	advertisement envelope	cut rectangle	acid	acid & black cds	-	Bloods handstamp Type 17; manuscript "M <sup>rs</sup> Young" 3 cent 1851 Scott 11, black Clarke 63b Phila cds cancel tied	M <sup>rs</sup> William W Young / Mrs William. W. Young / in care of W <sup>th</sup> . W. Young Esq / Memphis Tenn	Tennessee	78
79	June 4, (1852-54)	(envelope)	large right sheet margin cut rectangle	acid	acid	-	Bloods handstamp Type 17	Mr Jarvis Mason / 35 South <u>Juniper</u> st	no	79
80	June 4, (1852-54)	small embossed envelope	right margin cut rectangle portion of stamp below	acid	acid	-	Bloods handstamp Type 17 3 cent 1851 Scott 11, pen cancel, Hummelstown cds tied manuscript "Missent for" and "Answered / Sure Ex"	Mr. John. Weist. Jr / Unionown / Dauphin Co / Pa.	Pennsylvania	80

Table I. Chronological 15L15 data base. (cont'd)

No.	DATE	COVER	15L15	CANCEL	TIED	LABEL	FEDERAL STAMPS & MARKS	ADDRESSEE	OUTBOUND	No.
81	June 30, (1852-54)	envelope	cut rectangle	acid	acid	-	Bloods handstamp Type 17 manuscript "Williamson / Murphy's Light"	Robert M. Logan Esq / Consellor at Law / 286 North 3 <sup>rd</sup> (St)	Northern Liberties District	81
82	September 2, (1852-54)	envelope	cut rectangle	acid	acid	-	Bloods handstamp Type 17	Mr Thomas N attson / Care of Messrs Truitt & Bro / Mkt St abov 4th Sts / Phil	no	82
83	September 5, (1852-54)	envelope	cut rectangle	acid	acid	-	Bloods handstamp Type 17	Nathan R Potts / atty at Law / N <sup>o</sup> 34 Spring Garden St / Philada	Spring Garden District	83
84	September 7, (1852-54)	envelope	top margin, cut rectangle	acid	acid & black cds	-	Bloods handstamp Type 17	E.S. Jenet Miller, Esq. / 99 S. 4th St	no	84
85	September 14, (1852-54)	folded cover	cut rectangle	acid	acid	-	Bloods handstamp Type 17	Hiram Ellis Esqr / Bloods dispatch / Philadelphia	no	85
86	September, (1852-54)	small envelope	cut rectangle	acid	acid	-	Bloods handstamp Type 17 3 cent 1851 Scott 11, indistinct Phila cds cancel tied	For / Rachel Daudon / care of Job Williams / Newport	(Rhode Island)	86
87	October 5, (1852-54)	folded cover	cut rectangle	acid	acid	-	Bloods handstamp Type 17	Mer Rich <sup>d</sup> Garwood / care of / Jos. S. Seoreder Esq / 224 S. 10 <sup>th</sup> . st	no	87
88	November 9, (1852-54)	envelope	right margin, cut rectangle	acid	acid	-	Bloods handstamp Type 17	Mr. Leighton Coleman / at / Messrs: Thurlo, Hughes & Cos / No. 11 No: 5th St. / Philadelphia	no	88
89	November 29, (1852-54)	small envelope	damaged cut rectangle portion of right stamp	acid	acid	-	Bloods handstamp Type 17 3 cent 1851 Scott 11, pen "Way" cancel	For / Paul C Cameron Esqr. - / Stayville P.O. - / Orange Count- / N.Carolina	North Carolina	89
90	December 2, (1852-54)	front	large right sheet margin cut rectang; top stamp	acid	acid	-	Bloods handstamp Type 17	Mr. C Gm: J. Lennard / 11 <sup>th</sup> & Fitzwater	Moyamensing District	90
91	December 3, (1852-54)	envelope	right margin, cut rectangle	acid	acid	-	Bloods handstamp Type 17 3 cent 1851 Scott 11, pen "Way" cancel	Miss Anna C. --- / Care. Mr. Ros --- / Washing(ton) / D.(C.)	Washington, D.C.	91
92	December 8, (1852-54)	small envelope	cut rectangle	acid	acid	-	Bloods handstamp Type 17	E. Spence Miller Esqr. / No. 99 South 4 <sup>th</sup> street / above Spruce st. East-Side	no	92
93	December 9, (1852-54)	envelope	(black on bluish) cut rectangle	acid	acid	-	Bloods handstamp Type 17	James Shaw Jr / 391 Poplar St ab 13 <sup>th</sup> st / Phil	Spring Garden District	93
94	December 14, (1852-54)	envelope	cut rectangle portion of stamp above	acid	acid	-	Bloods handstamp Type 17	D <sup>r</sup> Wm. Darrach, /268 Arch St.- / near 10 <sup>th</sup> . St. / Philada.	no	94
95	December 30, (1852-54)	envelope	cut rectangle portion of left stamp	acid	acid	-	Bloods handstamp Type 17	Richard Peterson Esq / Care of / Wm. P. Cresson & Co / Iron Foundry / Willow ab. 13 <sup>th</sup> ..	Spring Garden District	95
96	January 6, (1853-54)	envelope damaged at left	(black on bluish) cut rectangle; stamp above	acid	acid	-	Bloods handstamp Type 17 manuscript "Way 5" and "42"	Campbell. Morfit-Esqr. / of Bank Lane / Baltimore / Md	Maryland	96

Table I. Chronological 15L15 data base. (cont'd)

No.	DATE	COVER	15L15	CANCEL	TIED	LABEL	FEDERAL STAMPS & MARKS	ADDRESSEE	OUTBOUND	No.
97	January 19, (1853-54)	envelope	cut rectangle	acid	acid & cds	-	Bloods handstamp Type 17 3 cent 1851 Scott 11, Clarke 63 Phila cds cancel tied	R.S. Duncanson / Artist. / Cincinnati. / Ohio	Ohio	97
98	January 24, (1853-54)	envelope	cut rectangle portion of stamp above	acid	acid & black cds	-	Bloods handstamp Type 17 3 cent 1851 Scott 11, black Clarke 63b Phila cds cancel tied	Catherine E Steigerone / East line Street / Lancaster	Pennsylvania	98
99	February 4, (1853-54)	(envelope)	cut rectangle	acid	acid	-	Bloods handstamp Type 17 3 cent 1851 Scott 11, black Clarke 63b Phila cds cancel tied	Kassan / (Unknown #6)	unknown	99
100	February 15, (1853-54)	ornate envelope	bottom left straddle pane cut rectangle	acid	acid	-	Bloods handstamp Type 17	Mr Nathan Peterson / No 153 Arch st / Philadu	no	100
101	February 15, (1853-54)	large ornate envl valentine enclos	3 singles cut rectangles	acid	acid	-	Bloods handstamp Type 17	Miss Mary & / care of / W <sup>th</sup> S Mintzer / No. 83 North 3rd St.	no	101
102	February 21, (1853-54)	(envelope)	cut rectangle	acid	acid	-	Bloods handstamp Type 17	(Meredith / (Unknown #7)	unknown	102
103	February 23, (1853-54)	envelope	right margin, cut rectangle	acid	acid	-	Bloods handstamp Type 17	Mr James Kay / at Mr Dummings / No 26 north 7 <sup>th</sup> st. / West side	no	103
104	February 21, (1853-54)	envelope	cut rectangle	acid	acid	-	Bloods handstamp Type 17 manuscript "Markland / 51 S. 5th. "	Wm. M. Meredith Esq / 9 York Buildings / Walnut St. below 8th / South Side.	no	104
105	April 12, (1853-54)	advertisement envelope	cut rectangle portion of right stamp	acid	acid	-	Bloods handstamp Type 17	N.B. Brown Esq / 5th below Chesnut	no	105
106	April 14, (1853-54)	folded cover	top sheet margin cut rectangle	acid	acid Bloods Type 17	-	Bloods handstamp Type 17	(John) Austin Esq / N. 4th - St / (Philadelphia)	Northern Liberties District	106
107	May 9, (1853-54)	envelope	top sheet margin cut rectangle	acid	acid	-	Bloods handstamp Type 17	L.W. Brickner / N <sup>o</sup> 19 South / Water st	no	107
108	February 14, 1855	advertisement envelope	cut rectangle	acid	acid	-	Bloods handstamp Type 17; Wilmington backstamp 3 cent 1851 Scott 11, black (Clarke 63b) Phils cds cancel tied	Thomas B. Danack Esq / Wilmington / Delaware	Delaware	108
109	June 11, 1855	envelope	cut rectangle	acid	acid	-	black Clarke 63b Phila cds, matching FREE handstamp manuscript "He He accept / June 12th / 55"	McCunnaophy Esq / Gettysburg / Adamss Co / Penna	Pennsylvania	109

Table I. Chronological 15L15 data base. (cont'd)

No.	DATE	COVER	15L15	CANCEL	TIED	LABEL	FEDERAL STAMPS & MARKS	ADDRESSEE	OUTBOUND	No.
110	March 8, (1854-55)	envelope	bottom sheet margin cut rectangle	acid	acid	-	Bloods handstamp Type 17 black Clarke 76a Philadelphia cds	Mr Murray Forber / Falmouth / Va	Virginia	110
111	August 26, (1854-55)	envelope	cut rectangle	acid	acid	-	black Clarke 76a Philadelphia cds	Unknown #8 / (Maryland)	(Maryland)	111
112	August 28, (1854-55)	envelope redu left	cut rectangle	acid	acid	-	black Clarke 63b Phila cds, matching numeral 1 in double octagon	Dr. Lassiter / Eastern Penitentiary / Coates St & 24 <sup>th</sup>	Spring Garden District	112
113	February 7, 1856	envelope	damaged cut rectangle	acid	acid & black cds	-	Bloods handstamp Type 19 3 cent 1851 Scott 10, black Clarke 63 Phila cds cancel tied	Miss Catherine Majerold / Eastern district / Lancaster Pa	Pennsylvania	113
114	March 6, 1856	U6 envelope	cut rectangle	acid	acid	-	Bloods handstamp Type 19 black Clarke 63b Phila cds cancel tied	Rev. A.S. Wallace / Mkeesport / Alleghany Co / Penn <sup>a</sup> .	Pennsylvania	114
115	March 6, 1856	envelope	right margin, cut rectangle	acid	acid	-	Bloods handstamp Type 19	P.M Ball Esq / Philadelphia / 100 South 4 <sup>th</sup> Street.	no	115
116	April 5, 1856	mourning envelope	(black on bluish) cut rectangle	acid	acid & black cds	-	3 cent 1851 Scott 11, black Clarke 63b Phila cds cancel tied	Mrs John Calvert / 335 G Street / Washington City--	Washington, D.C.	116
117	March 24, (1854-56)	advertisement envelope	cut rectangle	acid	acid	-	black Clarke 63b Phila cds, matching numeral 1 in double octagon	Mr Samuel Agnew / (Philadelphia)	no	117
118	September 21, (1854-56)	envelope redu bot	cut rectangle	acid	acid numeral 1 in oct	-	Bloods handstamp Type 17 black Clarke 63b Phila cds, matching numeral 1 in double octagon	Doctor. Lacetty / Penitentiary House / Coates St / <u>Philadelphia</u>	Spring Garden District	118
119	November 21, (1854-56)	envelope	left margin, cut rectangle	acid	acid & black cds	-	Bloods handstamp (Type 17) cds matching numeral 1 in double octagon	Dr D.W. Lasiter / Eastern Penitentiary / (Philadelphia)	Spring Garden District	119
120	January 5, 1857	envelope	right margin, cut rectangle portion of stamp below	acid	no	-	Bloods handstamp Type 19 3 cent 1851 Scott 11, black Clarke 63b Phila cds cancel tied	Miss Maggie Schall / Care of Ben. S. Molle / ,Bethlehem / Penna	Pennsylvania	120
121	July 7, 1857	envelope	cut rectangle	acid	acid	-	Bloods handstamp Type 19 black Clarke 63b Phila cds, matching numeral 1 in double octagon	C / Box 318 Phil <sup>d</sup> P.O.	no	121
122	August 19, (1857)	envelope	cut rectangle portion of left stamp	acid	acid	-	Bloods handstamp Type 19 3 cent 1851 Scott 11, black Clarke 63b Phila cds cancel tied manuscript "Paid" and "please answer by / in time of Mail"	Ezra Corey Esqr / Absecion / Sherif of Atlantic County / New Jersey	New Jersey	122
123	October 12, 1857	dated folded letter	cut rectangle	acid	acid	-	Bloods handstamp Type 19	Unknown #9 / (Philadelphia)	(no)	123
124	December 15, 1857	dated folded letter	cut rectangle	acid	acid	-	Bloods handstamp Type 21	Unknown #10 / (Philadelphia)	(no)	124

Table I. Chronological 15L15 data base. (cont'd)

No.	DATE	COVER	15L15	CANCEL	TIED	LABEL	FEDERAL STAMPS & MARKS	ADDRESSEE	OUTBOUND	No.
125	December 25, 1857	envelope	cut rectangle	acid	acid	-	Bloods handstamp Type 21; black Clarke 63b Phila cds two 3 cent 1857 Scott 26, black grid in circle cancel	Mr. John Calvert / 261 J. Street / Washington / D.C.	Washington, D.C.	125
126	October 10, (1854-57)	small embossed envelope	cut rectangle	acid	acid	-	3 cent 1851 Scott 11, black Clarke 63b Phila cds cancel tied	Messrs E.A.B Wambold / Bunker Hill / Bucks Co, / Pa,	Pennsylvania	126
127	November 30, (1854-57)	envelope	cut trapezoid	acid	acid	-	Bloods handstamp Type 19 3 cent 1851 Scott 11, black Clarke 63b Phila cds cancel tied	For the Reverend / Chas Nest Thompson / York- / Penna	Pennsylvania	127
128	February 2, (1855-57)	advertisement envelope	cut rectangle	(no)	black cds	-	black Clarke 63b Phila cds, matching numeal 1 in double octagon	Rev. A.H Hunter / Ph <sup>a</sup> .	Spring Garden District	128
129	January 7, (1858)	envelope	cut rectangle portion of right stamp	no	black cds	-	Bloods handstamp Type 19 3 cent 1851 Scott 11; black Clarke 63b Phila cds cancel tied	De W (---) / (Georgia)	Georgia	129
130	August 13, 1858	envelope	cut rectangle portion of left stamp	acid	acid	-	Bloods handstamp Type 19 3 cent 1851 Scott 10, black (Clarke 63b) Phila cds cancel tied	Elisa C. Collins / care of Job Wilbour / Newport / Rhode Island.	Rhode Island	130
131	xxxx 13, (1858)	envelope	damaged cut rectangle	acid	acid	-	Bloods handstamp Type 21	JW Ryen Esq / Tioga Railroad office / 1 <sup>st</sup> Story Exchange	no	131
132	August 23, (1853-58)	envelope	cut rectangle	acid	acid & black cds	-	3 cent 1851 Scott 10, Clarke 63 Phila cds cancel tied	M <sup>r</sup> Tor-- / Marsh -- / Chest-- / (Pennsylvania)	(Pennsylvania)	132
133	September 2X, (1853-58)	U6 envelope	cut rectangle	acid	acid	-	Clarke 63 Philadelphia cds	Rev C.S. Concling, M <sup>r</sup> Pleasant, / New Jersey.	New Jersey	133
134	January 13, (1855-58)	envelope	cut rectangle	acid	acid	-	Bloods handstamp Type 19 3 cent 1851 Scott 11, black Clarke 63 Philadelphia cds cancel tied	Mr. William Harris / Care of Revr - L. Maitland Esq / No 63 Beaver St / New York	New York	134
135	January 21, (1855-59)	advertisement envelope	damaged cut rectangle	acid	acid	-	Bloods handstamp Type 19	EF Chase Es / No. 77. South 5 <sup>th</sup> St / Ph	no	135
136	June 1, 1860	envelope	top margin, cut rectangle	acid	acid & black cds	-	Bloods handstamp Type 21	(Henry) Ash. / (18 Lombard Street.	no	136
137	August 6, 1861	patiotic envelope reduced at right	cut rectangle	acid	acid	-	Bloods handstamp Type 21; black Clarke 101 Phila cds 3 cent 1857 Scott 27, black circle of dots cancel	Miss Debbie Pen Thomas / Western Seminary / Chester Co / Street Road / Penn <sup>a</sup>	Pennsylvania	137
138	Undated	large envelope	(black on bluish) 5 singles (1 torn) rectan	acid	acid	-	Bloods handstamp Type 23	Mr Henry Long / No 227 Chesnut St / Present	no	138
139	Undated	large embossed valentine encl	cut rectangle	acid	acid	-	-	Dr Lewis / Spruce Street / Phil <sup>a</sup>	no	139
140	Undated	envelope	cut rectangle	acid	blue cds	-	3 cent 1851 Scott 11, blue Philadelphia cds cancel tied	Unknown #11 / (Russell, Massachusetts)	(Massachusetts)	140
A	July 19, 1859	U6 envelope	top margin cut rectangle	acid	no	-	Baltimore cds	S <sup>t</sup> Ge <sup>o</sup> J. Cambell Esqr / South 4 <sup>th</sup> St / Philadelphia	no	A
B	August 7, (1854)	folded cover	bottom margin cut trapezoid	segmented cork	segmented cork	-	3 cent 1851 Scott 11A, black Clarke 63b Phila cds cancel tied	S.H. Lambdin Esq / of Natchez / Pierpont House / Brooklyn / N.Y.	New York	B
C	July 8, (1853)	envelope	cut rectangle	segmented cork acid	segmented cork	-	3 cent 1851 Scott 11, blue Clarke (62) Phila cds cancel tied	Unknown #13 / (New Hampshire)	New Hampshire	C

Table I. Chronological 15L15 data base. (cont'd)

**Table II.** Summary of 15L15 address destinations.

<b>15L15 ADDRESS</b>		
<b>Total</b>	<b>Location</b>	<b>Census Number</b>
<b>35</b>	Philadelphia old city	1, 6, 12, 22, 23, 25, 35, 62, 65, 70, 72, 79, 81, 83, 84, 86, 87, 91, 95, 100, 101, 103, 104, 105, 107, 115, 117, 121, 123, 124, 131, 135, 136, 138, 139.
<b>13</b>	Philadelphia district	9, 63, 76, 81, 83, 90, 93, 95, 106, 112, 118, 119, 128
<b>2</b>	GERMANY	3, 5
<b>1</b>	ENGLAND	24
<b>1</b>	CANADA	29
<b>29</b>	Pennsylvania	2, 10, 17, 18, 26, (31), 32, 33, 36, 37, 40, 43, 48, 52, 53, 57, 69, 75, 77, 80, 98, 109, 113, 114, 120, 126, 127, 132, 137.
<b>11</b>	New Jersey	7, 8, 11, 16, 41, 49, 50, 56, 67, 122, 133.
<b>8</b>	Maryland	20, 38, 55, 58, 59, 61, 96, 111.
<b>6</b>	New York	13, 14, 28, 39, 51, 134.
<b>4</b>	Virginia	4, 27, 45, 110.
<b>4</b>	Washington D.C.	15, 40, 116, 125.
<b>4</b>	Rhode Island	19, 44, 85, 130.
<b>3</b>	Massachusetts	68, 73, 140.
<b>3</b>	Ohio	54, 66, 98.
<b>2</b>	North Carolina	60, 89.
<b>2</b>	Georgia	30, 129.
<b>1</b>	Delaware	108
<b>1</b>	South Carolina	71
<b>1</b>	Tennessee	78
<b>1</b>	Wisconsin	64
<b>1</b>	Michigan	74
<b>1</b>	California	21
<b>6</b>	Unknown	(31), 34, 42, 46, 47, 99, 102.
<b>140</b>	<b>All Locations</b>	

**Table III.** Summary of 15L15 cover types.

<b>15L15 COVERS</b>		
<b>Total</b>	<b>Cover Type</b>	<b>Census Number</b>
<b>83</b>	Envelope	3, 5, 6, 7, 10, 13, 16, 17, 18, 20, 22, 24, 25, 26, 28, 30, (34), 36, 37, (38), 39, 40, (42), 43, 44, 45, 47, 49, 50, 52 53, 54, (55), 57, 58, 59, 62, 64, 69, 71, 73, 74, 75, 76, 77, (79), 81, 82, 83, 84, 88, 91, 93, 94, 95, 96, 97, 98, (99), (102), 103, 104, 107, 108, 110, 111, 112, 113, 115, 118, 119, 120, 121, 122, 125, 127, 129, 130, 131, 132, 134, 136, 140
<b>3</b>	Embossed envelope	<b>80, 126, 139</b>
<b>7</b>	Small envelope	56, 67, <b>80</b> , 86, 89, 92, <b>126</b>
<b>1</b>	Narrow envelope	48
<b>3</b>	Large envelope	<b>101, 138, 139</b>
<b>2</b>	Ornate envelope	100, <b>101</b>
<b>2</b>	Valentine enclosure	<b>101, 139</b>
<b>8</b>	Nesbit envelope	19, 27, 31, <b>32, 33</b> , 63, 114, 133
<b>11</b>	Advertising envelope	<b>32, 33</b> , 41, 45, 61, 78, 105, 108, 117, 128, 136
<b>1</b>	Patriotic envelope	137
	Cameo envelope	0
	Caricature envelope	0
<b>1</b>	Mourning envelope	116
<b>13</b>	Folded cover	12, 14, 18, 21, 23, 29, 60, 65, 70, 72, 85, 87, 106
<b>8</b>	Dated folded letter	2, 8, 9, 11, 15, 66, 123, 124
<b>1</b>	Dated bill	4
<b>1</b>	Printed circular	1
<b>1</b>	Printer pamphlet	35
<b>3</b>	Front Piece	(51), 68, 90 0
<b>149</b>	<b>All Types</b> (140 covers)	

**Table IV.** Summary of 15L15 cancel types.

<b>15L15 CANCEL</b>		
<b>Total</b>	<b>Cancel Type</b>	<b>Census Number</b>
<b>139</b>	acid	1, 2, 3, 4, 5, 6, 7, 8, 9, 10, 11, 12, 13, 14, 15, 16, 17, 18, 19, 20 21, 22, 23, 24, 25, 26, 27, 28, 29, 30, 31, 32, 33, 34, 35, 36, 37, 38, 39, 40, 41, 42, 43, 44, 45, 46, 47, 48, 49, 50, (51), 52, 53, 54, 55, 56, 57, 58, 59, 60, 61, 62, 63, 64, 65, 66, 67, 68, 69, 70, 71, 72, 73, 74, 75, 76, 77, 78, 79, 80, 81, 82, 83, 84, 85, 86, 87, 88, 89, 90, 91, 92, 93, 94, 95, 96, 97, 98, 99, 100, 101, 102, 103, 104, 105, 106, 107, 108, 109, 110, 111, 112, 113, 114, 115, 116, 117, 118, 119, 120, 121, 122, 123, 124, 125, 126, 127, 129, 130, 131, 132, 133, 134, 135, 136, 137, 138, 139, 140.
<b>1</b>	Uncancelled	(128)
<b>139</b>	<b>Total</b>	

**Table V.** Summary of 15L15 auxiliary markings.

15L15 AUXILIARY MARKINGS		
Total	Marking Type	Census Number
12	blue Philadelphia Clarke 62 cds	(4), 5, (7), 37, 38, 39, 41, 43, 44, 45, 46, 47
1	blue Philadelphia cds	140
26	blue Philadelphia Clarke 63a cds	2, 10, 13, (14), 16, 18, 20, 21, 24, 26, 27, 28, 29, 30, 32, 33, 34, 36, 49, 52, 53, 54, 55, 56, 57, 58
32	black Philadelphia Clarke 63b cds	59, 60, 61, 64, 65, 67, 68, 69, 73, 75, 77, 78, (108), 109, 112, 113, 114, 116, 117, 118, 119, 120, 121, 122, 125, 126, 127, 128, 129, (130), 131, 134.
5	Philadelphia Clarke 63 cds	98, 99, 100, 133, 134
7	blue Philadelphia Clarke 75a cds	3, 8, 11, 17, 40, (42), 48
6	black Philadelphia Clarke 76a cds	66, 71, 74, 75, 110, 111
3	blue Philadelphia indistinct cds	31, 51, 86
1	black Philadelphia Clarke 101 cds	137
	red Philadelphia (Clarke 430e) sl	0
	red New York cds	0
	red numeral 5 or 10 in circle	0
1	black circle of dots	137
1	black grid in circle	125
1	Hummelstown cds	80
1	blue Hudson cds	66
1	black Ashland cds	66
1	BOSTON BR PKT	24
2	NYorkB <sup>®</sup> PKT <sup>†</sup>	3, 5,
7	numeral 1 in double octagon	65, 112, 117, 118, 119, 121, 128
2	black italicized numeral 5	11, 66
1	red / blue italicized numeral 20	3
	blue FREE in lozenge	0
	red "WAY / 5" or "WAY" handstamp	0
1	printed "Circular"	1
100	Bloods handstamp Type 17	3, 5, 7, 8, 9, 10, 11, 12, 13, 14, 15, 16, 17, 18, 19, 20, 21, 22, 23, 24, 25, 26, 27, 28, 29, 30, 32, 33, 34, 35, 36, 37, 38, 39, 40, 41, 43, 44, 45, 46, 47, 49, 50, 51, 52, 53, 54, 56, 57, 58, 59, 60, 61, 62, 63, 64, 65, 66, 67, 68, 69, 70, 71, 72, 73, 75, 77, 78, 79, 80, 81, 82, 83, 84, 85, 86, 87, 88, 89, 90, 91, 92, 93, 94, 95, 96, 97, 98, 99, 100, 101, 102, 103, 104, 105, 106, 107, 108, 110, 119
1	Bloods handstamp Type 18	1
14	Bloods handstamp Type 19	74, 76, 113, 114, 115, 120, 121, 122, 123, 127, 128, 130, 134, 135
5	Bloods handstamp Type 21	124, 125, 131, 136, 137
1	Bloods handstamp Type 23	138
2	manuscript "Way 5" "Way 10" "Way 20" "W5"	15, 96
2	manuscript "Way" "W"	89, 91
4	manuscript rate	3, 5, 24, 96
17	manuscript notation	3, 4, 5, 10, 32, 33, 35, 36, 38, 50, 57, 77, 78, 80, 81, 104, 122
6	manuscript date	6, 22, 25, 29, 69, 109
4	"Paid" "Paid 1" "Paid 3" "Paid 5" "Paid 10"	52, 67, 80, 122
	manuscript "Bloods Despatch"	0
1	None	139
362	All Types (139 of 140 covers)	

**Table VI.** Summary of 15L15 tied to their cover.

<b>15L15 TIED to COVER</b>		
<b>Total</b>	<b>Marking Type</b>	<b>Census Number</b>
<b>18</b>	blue Philadelphia cds	2, 3, 4, 26, 31, 33, 34, 36, 39, 41, 42, 47, 48, 54, 55, 57, 58, 140.
<b>17</b>	black Philadelphia cds	60, 61, 65, 68, 69, 75, 78, 84, 97, 98, 113, 116, 119, 128, 129, 132, 136,
<b>1</b>	numeral 1 in double octagon	<b>118</b>
<b>1</b>	blue Hudson cds	<b>66</b>
	red New York cds	0
	red (NY) numeral 5 in circle	0
	"5Cts.Due" handstamp	
	red "WAY/10" handstamp	
<b>2</b>	Bloods Handstamp	<b>(43), (106)</b>
<b>124</b>	acid	1, 2, 3, 4, 5, 6, 7, 8, 9, 10, 12, 13, 14, 15, 16, 17, 18, 19, 20, 21, 22, 23, 24, 25, 26, 27, 28, 31, 33, 34, 35, 36, 37, 38, 39, 40, 41, 43, 44, 46, 48, 49, 50, 52, 53, 54, 55, 56, 58, 59, 60, 61, 62, 63, 65, 66, 67, 68, 69, 70, 72, 73, 74, 75, 77, 78, 79, 80, 81, 82, 83, 84, 85, 86, 87, 88, 89, 90, 91, 92, 93, 94, 95, 96, 97, 98, 99, 100, 101, 102, 103, 104, 105, 106, 107, 108, 109, 110, 111, 112, 113, 114, 115, 116, 117, 118, 119, 121, 122, 123, 124, 125, 126, 127, 130, 131, 132, 133, 134, 135, 136, 137, 138, 139
	manuscript	0
<b>9</b>	none	11, 29, 30, 32, 45, 64, 71, 76, 120.
	unknown	0
<b>163</b>		34 italicized

**Table VII.** Summary of 15L15 stamp shapes.

15L15 STAMP SHAPE			
Total	Shape	Census Number	Cut Rectangle Varieties
137	Cut rectangle	1, 2, 3, 4, 5, 7, 8, 9, 10, 11, 12, 13, 14, 15, 16, 17, 18, 19, 20, 21, 22, 23, 24, 25, 26, 27, 28, 29, 30, 31, 32, 33, 34, 35, 36, 37, 38, 39, 40, 41, 42, 43, 44, 45, 46, 47, 48, 49, 50, 52, 53, 54, 55, 56, 57, 58, 59, 60, 61, 62, 63, 64, 65, 66, 67, 68, 69, 70, 71, 72, 73, 74, 75, 76, 77, 78, 79, 80, 81, 82, 83, 84, 85, 86, 87, 88, 89, 90, 91, 92, 93, 94, 95, 96, 97, 98, 99, 100, 101, 102, 103, 104, 105, 106, 107, 108, 109, 110, 111, 112, 113, 114, 115, 116, 117, 118, 119, 120, 121, 122, 123, 124, 125, 126, 128, 129, 130, 131, 132, 133, 134, 135, 136, 137, <b>138</b> .	11 Top margin: 7, 12, 20, 33, 61, 62, 63, 84, 106, 107, 137. 7 Bottom margin: 17, 32, 46, 69, 72, 73, 110. 9 Right margin: 65, 79, <b>80</b> , 88, <b>90</b> , 91, 103, 115, <b>120</b> . 1 Left margin: 119. 0 Top left corner: 1 Top right corner: 76. 0 Bottom right corner: 2 Bottom left corner: 64, 100. 5 Portion of stamp above: 49; 90, 94, 96, 98. 3 Portion of right stamp: 89, 105, 129. 5 Portion of stamp below: 2, 69, 72, <b>81</b> , <b>121</b> . 4 Portion of left stamp: 76, 95, 123, 131.
2	Cut trapezoid	51, 127.	
2	Torn Rectangle	6, <b>138</b>	
	Cut square	0	
	Cut to Shape	0	
	Cut to Octagon	0	
	<b>Black on Bluish</b>	(1), (68), (93), (96), (116), (138)	
	<b>Blue on Lilac</b>	(8).	
<b>141</b>	<b>All Types</b> (140 covers)		

**Table VIII.** 50 % of 15L15 were government combination covers.

15L15 COMBINATION GOVERNMENT COVERS		
Total	Cover Type	Census Number
	5 cent 1847 stamp	0
	10 cent 1847 stamp	0
1	1 cent 1851 Scott 7	<b>29</b>
57	3 cent 1851 Scott 10	28, 51, 113, 130, 132
	3 cent 1851 Scott 11	2, 4, 7, 10, 13, 14, 16, 18, 20, 21, 24, 26, 29, 30, 34, 36, 37, 38, 39, 41, 42, 43, 44, 45, 46, 47, 49, 52, 53, 54, 55, 56, 57, 58, 59, 60, 61, 64, 67, 68, 69, 73, 77, 78, 80, 86, 89, 91, 97, 98, 99, 108, 116, 120, 122, 126, 127, 128, 134
2	3 cent 1857 Scott 26	125, 137.
5	Multiple stamps	<b>21, 24, 29, 59, 125</b>
8	Embossed stationary	19, 27, 31, 32, 33, 63, 114, 133.
<b>68</b>	<b>All Types</b>	



Figure 1. Single 15L15 “Blue & Pink, *Bluish.*”

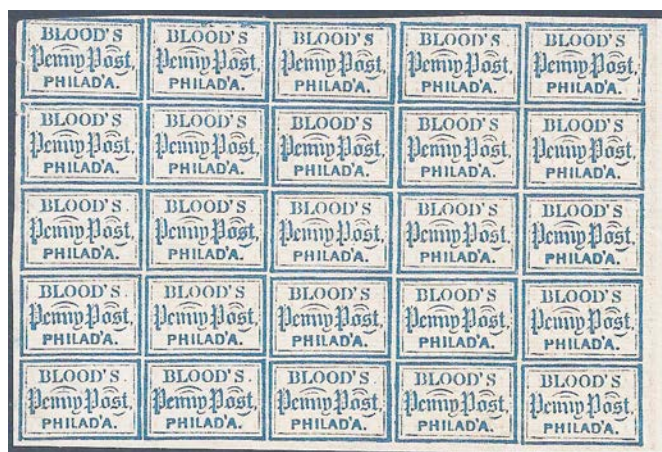


Figure 2. Pane of 25 unused 15L15 “Blue & Pink, *Bluish.*”

### 15L15 Photographic Census

One hundred forty three "BLOOD'S / Penny Post / PHILAD'A" 15L15 covers have been identified. Three suspicious examples have been withheld, leaving a data base of 140, of which 139 were photographed; census number 140 has not been photographed. All available photos have been posted on the Carriers and Locals Society website. For simplicity, this stamp will be referred to as Penny Post 15L15. Ninety four are **color**, **67%**, while 45, or 33%, are black and white (census number 1, 2, 7, 8, 14, 31, 36, 38, 39, 42, 43, 44, 46, 47, 51, 57, 63, 67, 86, 87, 91, 97, 98, 99, 102, 106, 111, 112, 113, 116, 117, 119, 122, 123, 124, 129, 130, 131, 132, 133, 134, 135, 136, 137).

All too often old auction catalog photos did not include a cover's entire address. Of the 15L15 cover data 7 photographs revealed a partial address (census number 26, 67, 91, 106, 132, 136, 140); another 15 photos omitted the entire address (census number 1, 31, 34, 42, 46, 47, 55, 99, 102, 107, 111, 116, 123, 124, 129) offering no destination information. Accompanying auction catalog descriptions of postal markings and destinations, however, are not without merit by providing useful

collateral information.<sup>48</sup> These 22 difficult covers comprise 16% of 140 covers; 11 of which (8%) are partially unknown, **Table II**. Conversely, **92% are destination known**.

### 15L15 Cover Data Base

A 2% survival rate for private post covers had been previously selected for this series of articles,<sup>49</sup> but no longer seems applicable. During the very early 1850's the quantitative scale of Blood's Despatch as measured by enormous numbers of collection boxes, numerous deliveries each day, cheap postal costs, and enormous quantities lost by fire, created an environment of unpredictable survival numbers. Although certainly far from complete, a meaningful data base has nonetheless been compiled, providing a critical mass to appreciate, examine, understand, theorize, further interpret company behavior, and form logical conclusions for this great private post.

### 15L15 Service Time

Evidence based philatelic data by necessity is associated with *varying degrees of certainty*. **Table I** data include 39 *date certain* examples, given direct and specific day, month, and year. Another 32 are *indirectly date specific*, but well supported by collateral information.<sup>50</sup> Altogether, **71** of 140, or 51% are year determinate with certain dates. The annualized spread of these 71 are graphically demonstrated in **Figure 4**. Volume was **greatest in 1853**, and dropped rapidly over the following two years.

A different set of 38 covers can be reasonably determined to within a two calendar year period (census numbers 36-58; 96-107; 110-112) based largely upon auxiliary markings of known service periods. Another 21 examples (census numbers 79-95; 117-119; 128) can be determined to within a three year period, 2 covers (126-127) fall within a four year period; 4 covers (census numbers 132-135) within a six year period, and 1 (census number 137) within seven years (none 5 years). Total is 66 covers within a defined period of time.

Finally, only 3 (census number 138, 139, 140) are entirely undated without any date information.

**Table I** evidence confirms ~~Penny Post~~ 15L15 began earlier than mid-1852. The **earliest** recorded date certain is a tied **May 13, 1852** cover, see **Figure 3** (census number 1). Shortly thereafter a second 1852 date certain example on June 30, 1852 (census number 2) has been recorded. Although neither has been seen in public for 62 and 40 years respectfully, their auction catalog descriptions fortunately provide unequivocal dates. They are indeed early outliers, since not until the **April 1953 crescendo** did a typical sequence of increasing volume develop, consistent with new issue introduction, and likely slow replacement of outstanding city stamps and post office stamps.<sup>51</sup>

---

<sup>48</sup> Morris, loc. cit., *The Penny Post*, October 2015, pages 21,60.

<sup>49</sup> Morris, loc. cit., *The Penny Post* April 2014, page 38.

<sup>50</sup> Ibid.

<sup>51</sup> Morris, loc. cit., *The Penny Post*, July 2016, pages 7, 15.

The **latest recorded** date certain Penny Post 15L15 cover is **August 6, 1861** (census number 137), **Figure 5**, a *very far outlier* by several years, and more than 12 years following earliest data.

Philatelic **15L15 lifespan** has been derived from 130 covers between date certain **May 13, 1852** (census number 1) and **August 13, 1858** (census number 130), beyond which *outliers* exist. This period is 2302 days, or 329 weeks, and equivalent to 75 months.

The **15L15 cluster** of Penny Post covers is not quite as broad including 127 covers, is defined by date specific and monthly consecutive examples, and had extended from **April 16, (1853)** (census number 3) until **January 7, (1858)** (census number 129). The total domain of 127 cluster examples reflects the period of greatest business activity. The cluster period spanned 1,573 days, or 225 weeks,

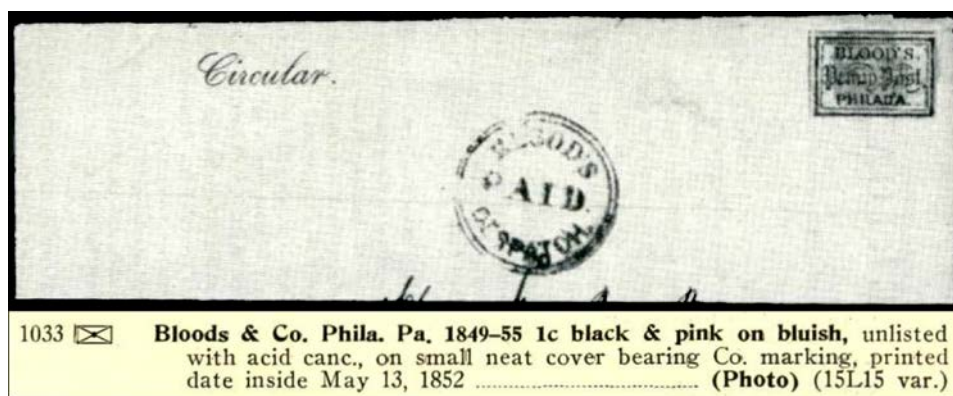


Figure 3. Earliest recorded 15L15 was May 13, 1852, variant “Black on Bluish.”

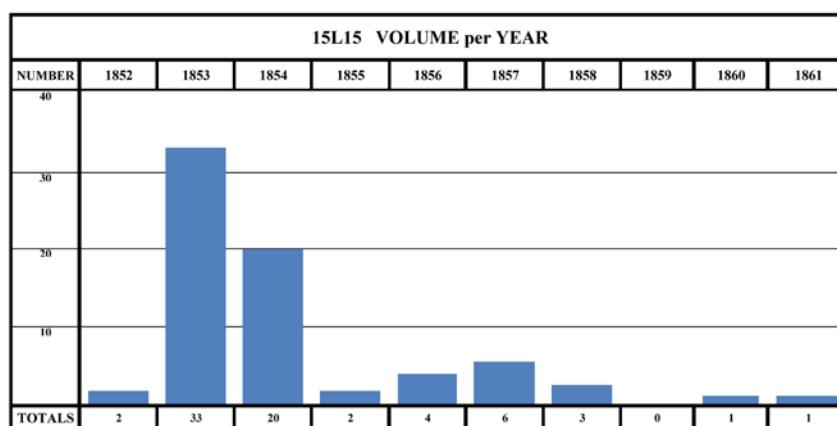


Figure 4. Seventy-three 15L15 covers were year determinat.



Figure 5. Latest recorded 15L15 was August 6, 1861.

equivalent to 52 months. During these 52 months 127 covers is a rate of **2.44 covers per month survival**. Of 127 cluster covers, 85 are *likely* outbound destination, and 42 are likely local destination. Of 127 cluster examples, however, only 119 are destination *specific*; 80 outbound and 39 local service. Furthermore, a period of virtually exclusive presence existed from **July 12, 1853 through February 13, 1854** with no other issues actively in play.

To place in context, Blood's Despatch stamp predecessors **Post Office** 15L17 and its counter-partner ***Paid*** 15L12, were largely one year stamps during 1849. **One Cent** 15L13, however, the final Blood's Despatch issue was quite different with staying power with significant volumes during three calendar years (virtually exclusive from March 1, 1850 until April 15, 1853).

### 15L15 Service Location

Final destinations are summarized in **Table II**. Blood's Penny Post collected from five hundred boxes<sup>52</sup> before sorting at the principal office and appropriate delivery.

Six 15L15 **Penny Post** destinations are unknown, lacking definitive information outbound versus local delivery. Five must have been outbound given a 3 cent general issue postage stamp (census number 34, 42, 46, 99); one was likely outbound given a post office handstamp (census number 47); one was most likely private post delivered, devoid of any post office stamps or handstamps (census number 102), and an addressee known from previous articles.<sup>53</sup>

Of 134 known destinations, 86 letters, or 64% were outbound letters via a United States post office. Moreover, given five of six unknowns are most likely outbound, from the entire data base of 140 examples **65% were outbound**.

Conversely, **48 covers, 34% were local** deliveries. See **Figure 6** map. From the 48 local deliveries, 13 or **27% of local service had been to an adjacent District**. Ten of these 13 were addressed to Spring Garden (census number 9, 63, 76, 83, 93, 95, *112, 118, 119, 128*), **Figure 7**; two Northern Liberties (census number 81 and 106); and one to Moyemensing (census number 90).

The most contentious destination had been Spring Garden.<sup>54</sup> Four of ten addressed to Spring Garden (census numbers *112, 118, 119, 128*) are *italicized* because they also bear a government cds with matching "numeral 1 in double octagon" handstamp, indicating local government participation. The post office either (a) held a "drop letter" for up to two days,<sup>55</sup> (b) perhaps held longer in a subscription box, or (c) carrier department door delivery to the Spring Garden District address.

**Figure 8** (census number 65) was addressed to the Philadelphia post office, a drop letter specifically held in a post office box.<sup>56</sup> Only one **Penny Post** 15L15 cover, (census number 85), **Figure 9**, was similarly addressed to Blood's office, likely held in one of their boxes.

<sup>52</sup> Ibid.

<sup>53</sup> Morris, loc. cit., *The Penny Post*, October 2015, page 43.

<sup>54</sup> Morris, op. cit., *The Penny Post*, July 2016, pages 19, 20.

<sup>55</sup> Vernon R. Morris Jr, MD, "What is a 'Drop Letter' and a 'Drop Dead Letter'?", *The Chronicle of the U.S. Classics Postal Issues*, Vol. 55, No. 4, (Whole No. 200), November 2003, pages 248-250.

<sup>56</sup> Morris, op. cit., *The Penny Post*, July 2016, pages 8, 30.

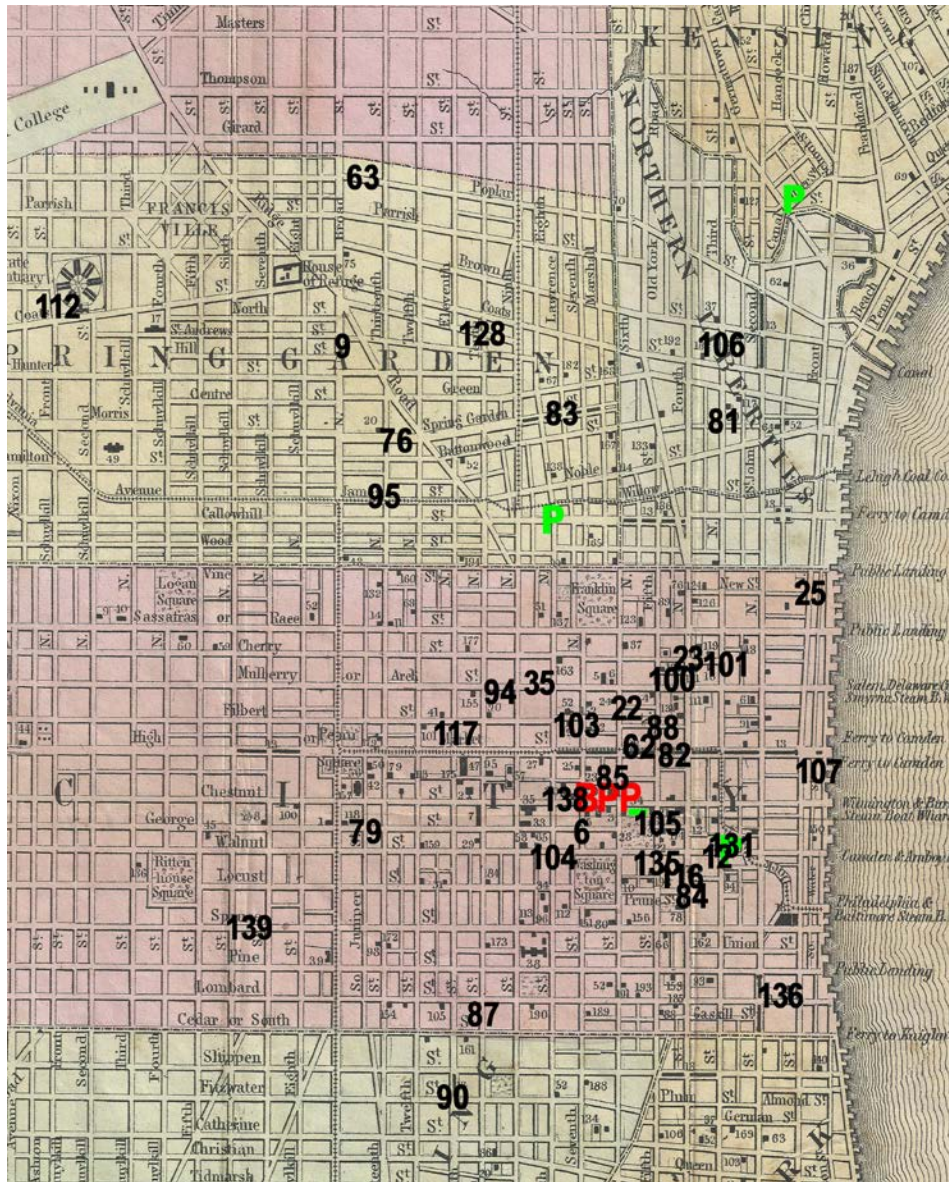


Figure 6. Map distribution of 15L15 local addresses.



Figure 7. Eastern State Penitentiary was in western Spring Garden District.

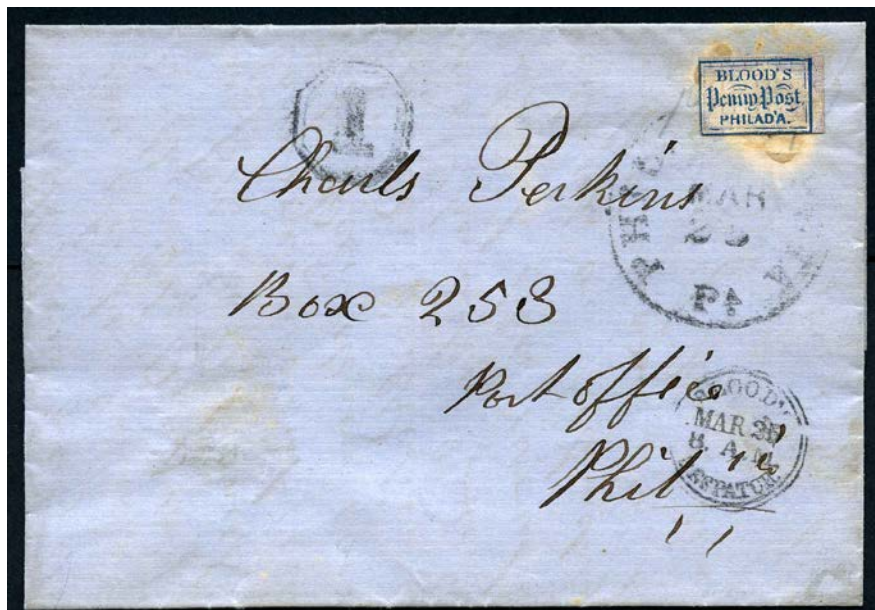


Figure 8. 15L15 addressed to Post Office box.

Only two locations had been west of Broad Street: a valentine to Dr. Lewis (census number 139); and Dr. Lassiter at Eastern State Penitentiary in Spring Garden, who received 3 of 140 covers, about of 2% all data. Previous Blood's Despatch data bases also similarly confirmed only 2% business activity west of Broad Street: 15L17 issue with only 3 of 159 data;<sup>57</sup> 15L12 issue only 1 of 45;<sup>58</sup> 15L13 issue only 7 of 299.<sup>59</sup> Drawing from 603 covers in four data bases only 12 locations (14 covers) were **west of Broad Street, less than 2%.**

Two covers were bootlegged (carried privately) into Philadelphia, and given to Blood's Penny Post for service (census number 8 and 11). Each originated in Greece, and were eventually destined for Princeton, New Jersey,<sup>60</sup> **Figure 10.**

### 15L15 Cover Type

**Table III** summarized various cover types bearing a 15L15 Penny Post stamp. A total of 113 examples, **81%, were envelopes.** The highest percentage yet for envelopes. Of the 113 total envelopes, only 30 deserved special descriptions, several of which tabulated more than once. Folded covers accounted for most of the remaining 27, or 19%, some included dated letter contents.

At most, three are cover *fronts* (census number 51, 68, 90), portions of earlier envelopes or folded letter sheets. No remnant "piece of covers." No wrappers.

**Table I** is only the third data base in this series comprised of **more envelopes than folded letters**, this group in dramatic fashion. At the risk of repetition, envelopes were clearly the mid-century trend. Advertising envelopes made a strong appearance, 8% of data (census number 32, 33, 41, 45, 61, 78, 105, 108, 117, 128, 136), **Figure 11.** No proprietary "self-sealing" envelopes with company name embossed on reverse flap had been identified.<sup>61</sup> However, Nesbitt government embossed prepaid envelopes were commercially available in Philadelphia by July 7, 1853. Eight examples (census number 19, 27, 31, 32, 33, 63, 114, 133) are found among the 113 envelopes, almost 6% of the entire 15L15 data base. The earliest recorded Nesbitt combination 15L15 Blood's Penny Post stamp was August 24, (1853), **Figure 12.**

### 15L15 Cancel Types

**Table IV** revealed that 139 of 140 covers with 15L15 Penny Post stamp, well over **99%, were cancelled** by Blood's Penny Post. Virtually all were cancelled by **acid**, introduced mid-January 1849.<sup>62</sup>

Perhaps one had not been cancelled (census number 128), since neither the auction description nor black and white photo provided evidence supporting the presence of acid.

<sup>57</sup> Morris, op. cit., *The Penny Post*, October 2015, pages 13, 29, 35.

<sup>58</sup> Vernon R. Morris, Jr., MD, "Blood's Part 13: 15L12," *The Penny Post*, Vol. 24, No. 1, January 2016, Whole No. 94, pages 34, 42.

<sup>59</sup> Morris, op. cit., *The Penny Post*, July 2016, electronic pages 21, 26, 33, 38, 39, 79.

<sup>60</sup> Morris, op. cit., *The Penny Post*, April 2014, page 42.

<sup>61</sup> Morris, op. cit., *The Penny Post*, July 2016, page 9.

<sup>62</sup> Vernon R. Morris, Jr., MD, "Blood's Part 10: 15L10," *The Penny Post*, Vol. 23, No. 2, April 2015, Whole No. 91, pages 33, 34.



Figure 9. 15L15 addressed to box at Blood's office.



Figure 10. Greece origin of 15L15 delivery by Bloods.



Figure 11. Blue corner advertising envelope.



Figure 12. 15L15 on prepaid government envelope.



Figure 13. 15L15 cancelled by acid and tied by Bloods handstamp.

No evidence exists that Blood's Penny Post employed former manuscript "X" penstroke cancels, "group of dots" cancel, red PAID cancel, multiple punctures cancel, or handstamps intended for cancellation. Only one 15L15 ~~Penny Post~~ example (census number 43) **Figure 13** was by serendipity struck by a Blood's handstamp.

### Blood's Handstamps

Blood's handstamp markings can provide a mechanism to date covers. **Table V** data reveal that 121 covers, or **86%** received a Blood's Handstamp. Of 121 examples the overwhelming preponderance were Handstamp Type 17,<sup>63</sup> appearing on 100 covers, 70% of all data, and 82% of Blood's handstamp subset. Moreover, **Type 17** was a new paradigm as the first recent "Blood's Despatch" handstamp documenting **partial date** information including month, day, hour (although not year), and had been reported by September 20, 1851 in newspapers.<sup>64</sup> Very recently updated Type 17 examples, both on 15L13 covers, have been identified by Marc Stromberg on a *date certain* October 2, 1851,<sup>65</sup> and by David Snow on a September 10, (1851) *date likely* example. However, the earliest *date likely* remains September 4, (1851).

Second most common was Blood's Handstamp **Type 19**,<sup>66</sup> identified on 14 covers. Type 19 was very significant as first Blood's handstamp with **full date** information including year, exceedingly helpful in data base formation. The earliest recorded Type 19 handstamp on 15L15 cover (census number 74) was October 30, 1854, the second earliest from all Blood stamp issues, only twelve days following a 15L13 October 18, 1854 example.<sup>67</sup> Of note was Blood's Despatch name retained on handstamps in late 1854, rather than the longer name Blood's Penny Post.

Also significant was a single Blood's Handstamp **Type 20 with outer circle** from May 20, (1852-54) "collect 2 cents" was struck on stampless covers.

### 15L15 Cover Auxiliary Marking

Auxiliary markings provide additional useful philatelic information regarding postal handling and delivery. In the context of private posts, all markings not intended to prevent reuse of the private post stamp have been considered auxiliary markings, both manuscript and handstamp, government and private. More than one marking may appear on a single cover. Identical markings repeated on a single cover were not "piled on" in this assessment.

**Table V ~~Penny Post~~ 15L15** identified 139 of 140 covers graced with a domestic auxiliary marking, over **99%**. Only 1 cover had no markings of any type including handwritten notes (census number 139). Only one cover had no private post or government postal markings (census number 6). The majority of covers displayed more than one marking on a cover, accounting for approximately 268 domestic markings on 140 covers. If spread over 139 covers, the average was **1.92**

---

<sup>63</sup> American Stampless Cover Catalog, Volume II, Fourth Edition, Phillips Publishing, 1987, page 67, Type 12.

<sup>64</sup> Morris, op. cit., *The Penny Post* July 2016, pages 9, 10.

<sup>65</sup> Ibid. page 28.

<sup>66</sup> American Stampless Cover Catalog, Volume II, Fourth Edition, Phillips Publishing, 1987, page 67, Type 14.

<sup>67</sup> Morris, op. cit., *The Penny Post*, July 2016, pages 30, 89, 94, 96.

**auxiliary markings** per cover. Of 268 domestic marking, 123 were government, 121 private post, 23 private individual, and 1 printed.

Government markings accounted for 123 of 268 markings; 111 were handstamp markings and 12 were manuscript markings. Also, from the 123 government markings, 118 were applied by the Philadelphia post office, 96%.

The greatest number of auxiliary markings per cover were found with foreign country destinations (census number 3, 5, 24, 29), due to a very high number of *foreign* transit markings, **Figure 14**.

### 15L15 Tied to Cover

**Table VI** summarized 15L15 *Penny Post* tied to cover. Of 140 recorded covers only 9 were *not* tied (census number 11, 29, 30, 32, 45, 64, 71, 76, 120), the preponderance during the earlier half of data base, whereas 131 were **tied, 94%**.

From 131 tied covers, 126 were by Blood's Penny Post. Therefore, **Blood's cancel tied 90%**, 126 of 140 covers. From 131 tied covers, 37 were accidental government handstamp, or 27%. Furthermore, 32 of the 37 covers were tied by *both* Blood's and government; and 6 others by government only (census number 42, 47, 57, 128, 129, 140), **Figure 15**.

No 15L15 stamps were triple tied to their cover by Blood's Despatch handstamp, Blood's acid, and government cds.<sup>68</sup>

### 15L15 Stamp Shape

**Table VII** summarized various types of 15L15 *Penny Post* stamp shapes. Mechanical separation has not been recorded, unlike a recent attempt with PAID 15L11.<sup>69</sup> Apparently all 15L15 stamps were manually separated. From the data base of 140 covers, 138 were rectangles and 2 were trapezoids (census number 51, 127). From 138 covers with rectangles the great preponderance was fully hand cut, and only 2 had been partially torn apart (census number 6 and 138), the later comprised of five stamps (4 cut rectangles and one partial torn rectangle).

No thin guidelines existed of course as the outer frames were cut. Very light "bluish" sheet margins were identified on 28 examples, 20% of all data. Three corner margin stamps, only 2% of all data, have been identified (census number 64, 76, 100), the last of which a corner straddle pane margin, **Figure 16**.

### 15L15 Correspondence

From any philatelic group of covers, multiple examples sent to the same person or address constitute a philatelic correspondence. The greatest *Penny Post* 15L15 quantity was three covers, but to only two persons. Mrs. L.B. Hunter received three covers (census number 8, 11, 26) in Princeton, New Jersey, **Figure 10**. A fourth went to Reverend A.H. Hunter in Philadelphia who may have been the correspondent. Another receiving three was Dr. Lassiter (census number 112, 118, 119) at the Eastern State Penitentiary in western Spring Garden District, **Figure 7**,

---

<sup>68</sup> Ibid, pages 10, 30.

<sup>69</sup> Morris, loc. cit., *The Penny Post*, July 2015, pages 21, 39, 41, 43, 55.



Figure 14. Transit markings en route to Germany.



Figure 15. 15L15 tied by government marking.



Figure 16. 15L15 straddle margin corner.

on Coates Street, today's Fairmont Avenue.<sup>70</sup> Very interesting information on the later topics in this article.

Six persons received two **Penny Post** 15L15 covers. William M. Meredith is well known to these articles, and makes another appearance (census number 102, 104).<sup>71, 72, 73</sup> Second is C Shrack (census number 23 and 72),<sup>74</sup> who is noteworthy for being one of only five addressees to receive the Philadelphia Despatch Post first stamp issue 15L2.<sup>75</sup> Third is John Calvert of Washington D.C. (census number 116, 125). Fourth is Sam Buckman (census number 32 and 33) who received almost identical illustrated advertising embossed envelopes during the same month, **Figure 17**. Fifth is Mrs. Blair of Washington DC and Baltimore (census numbers 15, 55). Sixth is E. Spencer Miller (census number 84, 92) on South 4<sup>th</sup> Street, and perhaps a relative Mrs. Miller in Princeton (census number 49).

Correspondence to the Cameron family is possible. Three different Camerons in three different states received 15L15 assisted letters (census number 14, 20, 89).

Persons known from prior articles who also received a single 15L15 **Penny Post** cover deserve to be mentioned. Nathan Potts (census number 83) was also the addressee of the earliest recorded world's first pictorial postage stamp<sup>76</sup> from predecessor Philadelphia Despatch Post. Potts had remained at his same office location on Spring Garden Ave.<sup>77</sup> Second is Robert Markoe (census number 64) of Wisconsin who circa 1850 had received five Blood's covers.<sup>78</sup> (John) Hickman (census number 31) of West Chester, PA was provided a likely address from a previous article.<sup>79</sup> John Austin (census number 106) may also have appeared in the past.<sup>80</sup>

William Lewis (census number 139) had moved from his 309 Spruce Street location in June 1849.<sup>81, 82</sup> In 1856 Wm. D. Lewis was president of Catawissa RR, and his son Wm. D. Lewis Jr. at 655 Spruce Street was president of N. Branch Coal Co.<sup>83</sup> Philadelphia renumbering was in effect by 1858 when perhaps the father moved in with son at **new number 1621 Spruce**,<sup>84</sup> important in the valentine section.

---

<sup>70</sup> Morris, op. cit., *The Penny Post*, July 2016, electronic page 20.

<sup>71</sup> Morris, op. cit., *The Penny Post*, July 2015, pages 43, 44, 46.

<sup>72</sup> Morris, loc. cit., *The Penny Post*, January 2016, pages 31, 33, 51.

<sup>73</sup> Morris, op. cit., *The Penny Post*, July 2016, pages 27, 32, 43, 51.

<sup>74</sup> 1855 McElroy's City Directory of Philadelphia, page 489 lists "varnish and pain manuf., 80 N 4<sup>th</sup>.

<sup>75</sup> Vernon R. Morris Jr, MD, "Blood's Part 1: 15L2," *The Penny Post*, Vol. 21, No. 1, January 2013, Whole Number 82, pages 2, 31)

<sup>76</sup> Morris, loc. cit., *The Penny Post*, July 2013, pages 41, 46, 50, 59.

<sup>77</sup> Morris, op. cit., *The Penny Post*, July 2016, pages 45, 79, 90.

<sup>78</sup> Ibid, page 45.

<sup>79</sup> Vernon R. Morris, Jr., MD, "Blood's Part 8: 15L8," *The Penny Post*, Vol. 22, No. 4, Oct 2014, Whole No. 89, pages 6, 15, 16.

<sup>80</sup> Morris, op. cit., *The Penny Post*, July 2016, page 24.

<sup>81</sup> Morris, op. cit., *The Penny Post*, October 2015, pages 17, 35.

<sup>82</sup> 1856 McElroy's City Directory, page 372 William D Lewis, president Catawissa W&E RR Co, S 4<sup>th</sup> Willing's al, h 360 Spruce.

<sup>83</sup> 1856 McElroy's City Directory, page 372.

<sup>84</sup> 1858 McElroy's City Directory, page 393 William D Lewis Jr, president N. Branch Coal Co., S 4<sup>th</sup> & Willings al, h 1621 Spruce.



Figure 17. Two advertising Nesbitt covers were addressed to Sam Buckman.

**NO UNPAID LETTERS OR VALENTINES** will be delivered by "BLOOD'S DESPATCH," from the 10th to the 14th of February. Large and costly Valentines must be sent by *Special Messengers*, in which case they must be left at the Office, registered, and the *Special Messenger* charge, 5 or 10 cts., according to distance, paid thereon.  
Office No. 30 ARCADE.

Figure 18. February 5, 1853 notice for large valentines.

**UNPAID VALENTINES** will not be delivered by Blood's Despatch Post. Large and costly ones should be left at the Office, 30 Arcade, registered and sent by special messengers.

February 9, 1854

**UNPAID VALENTINES** will not be delivered by BLOOD'S PENNY POST. Large and costly Valentines must be paid 5 and 10 cents each. See 4-Stgr.

February 14, 1854

Figure 19. February 9, 1854 at top, and February 14, 1854 at bottom.

Of philatelic interest is Charles Lex (census number 22), the recipient of the only Franklin Carrier Stamp, *Scott Catalogue* LO1,<sup>85</sup> tied by the Philadelphia carrier department red star handstamp.<sup>86,87</sup> Campbell Morfit (census number 96) in Baltimore has also been included in several articles.<sup>88,89</sup> Charles Biddle (census number 6),<sup>90</sup> and Robert Logan (census number 81) were historic names in Philadelphia.

### 15L15 Valentines

Traditionally valentines have involved large envelopes and often heavier fancy enclosures, time sensitive handling, and additional expense especially to more distant locations.<sup>91</sup> **Figures 18 and 19** reveal relevant newspaper announcements in early February of 1853 and 1854 respectively, and pertain specifically to valentines. Recently reinstated collect door service had expressly *excluded* large valentine envelopes, which required 5 or 10 cents prepayment, and registration for special messenger service. Perhaps rightfully so, for an endearing fancy valentine “gift.” Chivalry was “in order” and required by Blood’s. Nonetheless, Blood’s private post, was not less than opportunistic in formalizing, expediting, and charging heavily.

**Table I** data revealed four valentine candidates; all large ornate envelopes, but with curiously different payments. Two are undated, and two oddly dated February 15<sup>th</sup>, of course the day following Valentine’s day. All display at least one *Penny Post* 15L15 stamp, but not all with the required 5 stamps. All were cancelled, but only three show a Blood’s handstamp. Some uncertainty exists for proper date of delivery, late delivery, or no delivery. Newspaper advice, if not warning, to the public in due time by February 5, 1853<sup>92</sup> that “*Large and costly Valentines must be sent by Special Messenger, in which they must be left at the Office, registered and the Special Messenger charge, 5 or 10 cts, according to distance, paid thereon. Office No. 30 Arcade,*” **Figure 18**. Very similar the following year, 1854, on February 9<sup>th</sup> and 14<sup>th</sup>, **Figure 19**.<sup>93</sup>

The most credible valentine was addressed to Mr. Henry Long (census number 138), **Figure 20**. Fully compliant with five prepaid *Penny Post* 15L15 cancelled stamps, and registration confirmed by undated Special Messenger handstamp marking, Blood’s Handstamp Type 23 (old ASCC type 17). Although undated, this model example was in all likelihood February 14<sup>th</sup> year uncertain.

<sup>85</sup> *Scott 2012 Specialized Catalogue of United States Stamps & Covers, Nineteenth Edition*, Scott Publishing Co., 2011, Sidney Ohio, page 538.

<sup>86</sup> Vernon R. Morris, Jr., MD, “The Franklin Carrier Stamp on Cover,” *The Chronicle*, Vol. 63, No. 1, February 2001, Whole No. 229, pages 30, 35.

<sup>87</sup> Vernon R. Morris, Jr., MD, “The Philadelphia Eagle Carrier Cancellations,” *Collectors Club Philatelist*, Vol. 88, No. 3, May-June 2009, Whole No., page 149.

<sup>88</sup> Vernon R. Morris, Jr., MD, “Blood’s Part 5: 15L5,” *The Penny Post*, Vol. 22, No. 1, January 2014, Whole No. 86, pages 27, 34, 51, 57.

<sup>89</sup> Morris, op. cit., *The Penny Post*, July 2016, page 11.

<sup>90</sup> Morris, op. cit., *The Penny Post*, April 2014, pages 36, 61.

<sup>91</sup> Roth, loc. cit., *The Penny Post*, November 1991, pages 15, 16.

<sup>92</sup> Public Ledger Vol. XXXIV No. 116, page 2.

<sup>93</sup> Public Ledger Vol. XXXVI No. 119, page 2 and respectively Vol. XXXVI No. 123 page 2.

Almost as credible was the valentine to Miss Mary (census number 101), **Figure 21**, prepaid with only three instead of five Penny Post 15L15 stamps, but cancel tied and service confirmed by Blood's handstamp. However, three cents was underpayment for registration and Special Messenger. Rather than an undated Special Messenger handstamp, a pedestrian dated Type 17 is present, but one day late on February 15<sup>th</sup>! Was late delivery the consequence of large envelope short of appropriate payment? Not impossible given published notices requiring registration of large envelopes during valentine's week. Perhaps the sender wasn't correctly informed, but had a sense that additional payment was necessary, but not fully knowledgeable of the requirement to visit Blood's office for registration. It appears to have received regular handling one day late. Was the sender guilty of tardiness or short payment?

More unlikely was a large ornate envelope addressed to Mr. Nathan Peterson (census number 100), **Figure 22**. Prepaid by only one ~~Penny Post~~ 15L15 stamp, as if intended for routine delivery. Similar to Miss Mary this example received an unceremonious Blood's Handstamp Type 17, appropriate for usual common local service, but also dated February 15<sup>th</sup>! Another example of underpaid large valentine delivery one day late. Retaliation? Consequences? Another improbable rationale for February 15<sup>th</sup> would be Valentine's Day falling on a Sunday. During the 1850's, however, Sunday was possible only once, in 1858. However, no evidence exists that Blood's did not deliver on any Sundays.<sup>94</sup>

Most improbable was the valentine addressed to "Dr. Lewis" (census number 139), **Figure 23**, likely the son Wm. D. Lewis as mentioned above in correspondence section on "Spruce St" likely at 1621 Spruce,<sup>95</sup> more than two blocks west of Broad Street, and where 10 cent Special Messenger very likely had been appropriate. Nonetheless, this cover bears only one ~~Penny Post~~ 15L15 stamp, which appears lightly cancelled, probably tied. More problematic is the absence of Blood's handstamp marking to confirm delivery. Perhaps the letter was dropped into one of 500 Blood's collection boxes leading up to Valentine's Day, and at the principal office was cancelled, but immediately recognized invalid and woefully underpaid probable 10 cent rate. The beautiful item may have been held, as if unpaid, and not even delivered late on February 15<sup>th</sup> as the Peterson example. Alternatively, perhaps the sender presented to the Blood's Office with one stamp already on the cover, was routinely cancelled, but upon being asked for an additional 9 cents, the sender declined and departed to hand deliver them himself.

Only one of four examples fully complied with advertised requirements for February 14<sup>th</sup> delivery, **Figure 20**. Short paid **Figure 21** and **22** were delivered late on February 15<sup>th</sup>; **Figure 23** large envelope was never delivered for one cent to far away 16<sup>th</sup> and Spruce. Given Blood's Penny Post official Valentine's Day policy, widely advertised and planned, why should the private company compromise its policy?

<sup>94</sup> October 28, 2016 personal email from Gordon Stimmell.

<sup>95</sup> 1858 McElroy's City Directory page 393 William D Lewis Jr, president N Branch Coal Co, S 4<sup>th</sup> & Willings al, h 1621 Spruce.



Figure 20. Five 15L15 stamps and Special Messenger registered.



Figure 21. Underpaid three 15L15 stamps, not registered, and late delivery.



**Figure 22. Underpaid one 15L15 stamp, not registered, and late delivery.**

From the data base of 140 covers with 15L15 almost 3% were likely valentines, but only one properly paid and delivered on time. Since all 4 valentines were locally addressed, they comprise 9% of the subset of 48 local examples.

Very relevant to Blood's Valentine Day policy was contemporary ~~One Cent~~ 15L13, whose data of 299 included two large envelopes. Each possessed five stamps and an undated Special Messenger Handstamp.<sup>96</sup> They were properly paid, registered at Blood's office, and promptly delivered by Special Messenger. A valentine addressed to Miss Catherine Marsh revealed undated Special Messenger Type 22 successfully delivered to the nearest Spring Garden neighborhood, and reasonably at 5 cents. Adjacent Districts, therefore, appear not categorically assigned 10 cents. To the converse, old city west of Broad Street, as in Dr. Lewis (census number 139) **Figure 23**, was within the old city, but may have been further from Blood's Penny Post routine delivery circuit.

The other 15L13 valentine was addressed to Miss Sally Claghorn at Broad and Arch Streets, and which displayed an undated Special Messenger Handstamp Type 23 and dated Handstamp Type 17 for February 16<sup>th</sup>! Two days late! The sender correctly purchased five ~~One Cent~~ 15L13 stamps, properly registered the large envelope at Blood's office for special messenger handstamp confirming immediately delivery, although two days after Valentine's Day! Was Blood's Special Messenger two days tardy? Not possible! Perhaps Broad Street too, required 10 cents, and the sender refused the double rate, and possible late arrival? Unlikely, because Arch street was central and not north of the old city like Spring Garden. Or, could the sender himself have been two days late for some unknown reason? Possibly both, one day late and not enough incentive for 10 cents immediate delivery. If so, perhaps Blood's wanted to protect their special messenger's reputation, and not be misconstrued or culpable for delinquent service, and hence the additional dated handstamp.

### 15L15 Multiple Stamps

Only 2 examples from **Table VIII** data bear multiple Blood's Penny Post stamps (census number 101 and 138). The former contains three 15L15 stamps addressee Miss Mary, **Figure 21**; the latter five ~~Penny Post~~ stamps, **Figure 20**.

**Table VIII** also identified multiple government postage stamps on five 15L15 covers (census number 21, 24, 29, 59, 125).

### 15L15 Blood Advertising Labels

Advertising labels were obsolete, and did not appear upon any ~~Penny Post~~ 15L15 covers. Until recently the latest recorded Blood's advertising label was date likely April 14, (1852),<sup>97</sup> or date certain March 17, 1852 from prior articles.<sup>98</sup> They were immediately prior to the first Blood's Penny Post brand stamps May 13, 1852. Recently Marc Stromberg has identified a May 20, (1852) stampless cover with label, during the very first week of 15L15 introduction.

---

<sup>96</sup> Morris, op. cit., *The Penny Post*, July 2013, electronic pages 32, 37, 46, 65, 90, 91, 94, 96.

<sup>97</sup> Morris, op. cit., *The Penny Post*, October 2015, pages 25, 44, 62.

<sup>98</sup> Morris, op. cit., *The Penny Post*, July 2016, pages 11, 12, 32.



**Figure 23. Underpaid one 15L15 stamp, no handstamp, and unlikely delivery.**

### 15L15 Circulars

Mass business circulars had always been encouraged by D.O. Blood & Co. However, only two Blood's Penny Post 15L15 examples have been identified on circulars. May 13, 1852 (census number 1) in **Figure 5** is shown only by an old photo from 70 years ago, but reveals "Circular" printed on the cover. Second example (census number 4) was a printed notice, **Figure 24**.

### 15L15 Government Combinations

**Penny Post** 15L15 could not possibly be in combination with 1847 general issue government stamps, which were demonetized ten months earlier, on July 1, 1847. However, 1851 imperforate and 1857 perforated general issue stamps had been contemporaneously in service, and the former was an especially common combination with 15L15.

**Table VIII** confirmed **68 combination Penny Post** 15L15 with government prepaid postage, almost **50%** of the entire data base of 140. Of the 68 combinations, 8 were embossed stationary, 58 were 1851 general issues, and two were 1857 general issues (census number 125 and 137). Although the vast majority were 3 cent stamps, a single 1 cent (census number 29) was identified, **Figure 25**. Only two were 1857 perforated combinations (census number 125 and 137), **Figure 26**, or 3% of all combinations

### 15L15 Transatlantic

Three of 140 **Penny Post** 15L15 covers were transatlantic, for a 2% incidence rate. Two were addressed to Germany (census number 3, 5), **Figure 14** and **Figure 27**. One was destined for Scotland via England (census number 24), **Figure 28**.

### 15L15 Canada

Only one **Penny Post** 15L15 cover was destined for Canada West shown in **Figure 25** (census number 29). Altogether four of 140 **Penny Post** 15L15 covers were foreign country destinations (census number 3, 5, 24, 29), 3% of all data.

### 15L15 Transcontinental

Only one 15L15 cover was addressed to the West coast. **Figure 29** (census number 21), was dated September 8, 1853, and so far in this series only the second California destination.<sup>99</sup>

### 15L15 Volume – Time Analysis

The **Penny Post** 15L15 data *cluster period* included 127 covers between **April 16, (1853)** and **January 7, (1858)**. The respective 52 months of greatest philatelic activity based upon 2.44 cover survivors per month, **Figure 30**.

From the cluster subset of 127, likely outbound were 85, and likely local delivery were 42. Therefore, **67%** of the **cluster** subset were **outbound letters**, and 33% were local delivery, old city or adjacent districts.

---

<sup>99</sup> Ibid, pages 14, 28.

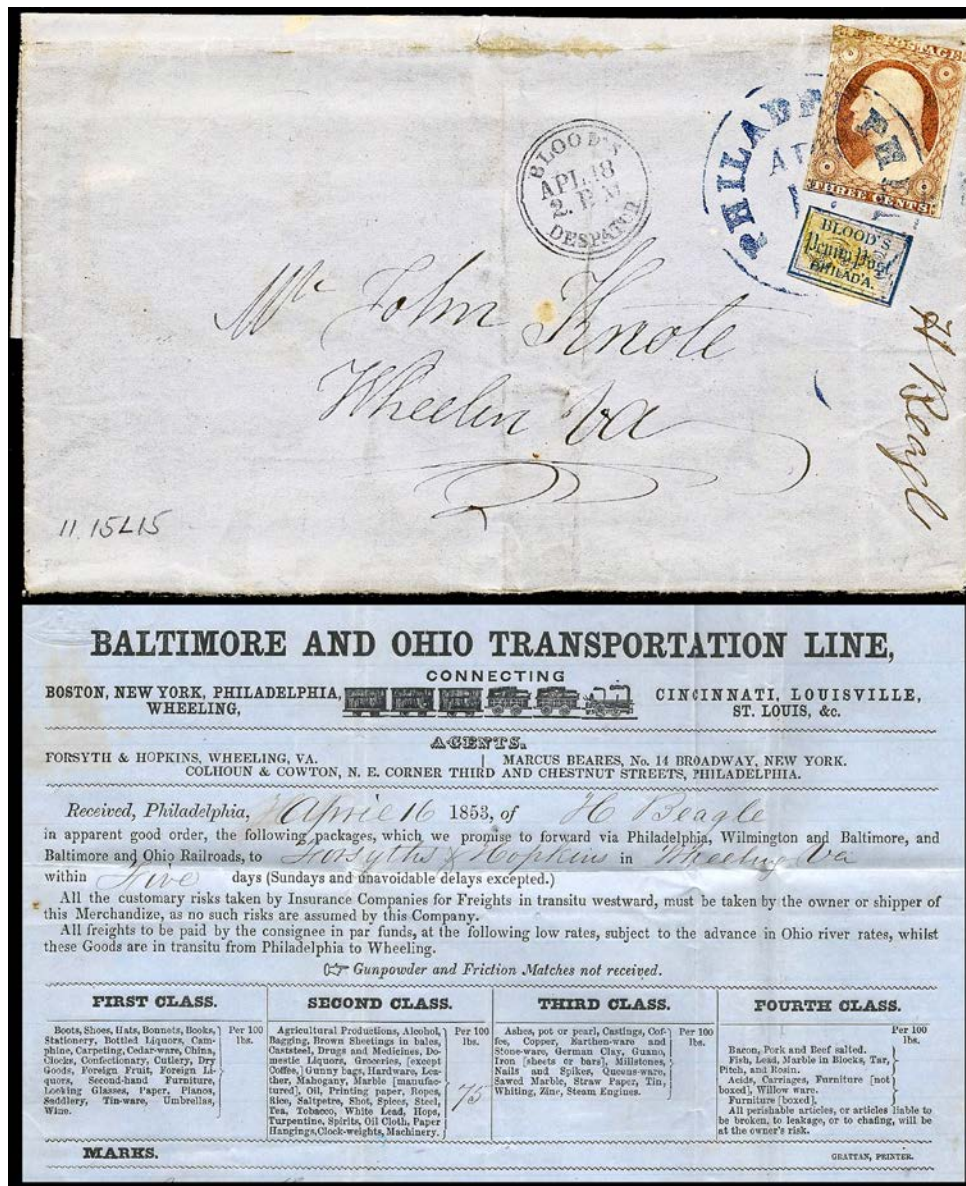


Figure 24. 15L15 on printed notice.

### 15L15 Time Line

The most active cluster period for ~~Penny Post~~ 15L15 was mid-April 1853 until very early January 1858. **Figure 31** reveals two early outliers, and a few late outliers until mid-1861, with an approximate incidence rate of one per year. The cluster period of four years nine months is unprecedented, and well exceeded **One Cent** 15L13 of three years eight months. Such longevity may suggest satisfaction with Blood's Penny Post stamp and/or company stability, perhaps enhanced by willingness to re-instate collect service.

For **seven months** a relatively **exclusive 15L15** philatelic period of service has been identified. This important period begins the day following conclusion of **One Cent** 15L13 cluster period July 11, 1853,<sup>100</sup> and ends the day before February 14, 1854 beginning or 15L16 cluster. During this special period extremely few outlier stamps of other stray Blood issues may have infrequently appeared, thereby classifying this period as "relatively" exclusive.

No absolutely exclusive philatelic period has been identified since late 1846. They had been highlighted by red in bar graphs, and were not contaminated by other outliers.

### 1852

On **January 8, 1849 one cent** became the universal Blood's rate for every single service, except large valentines. **Prepayment was mandatory**,<sup>101</sup> and volume discounts were obsolete. The unintended insidious consequences were a tremendous number of letters held for non-payment at the Blood's Despatch South 6<sup>th</sup> Street office. The fire of December 27, 1851 unfortunately destroyed 90,000 letters,<sup>102</sup> but made the public aware of the great magnitude of failed communications. In desperate need of an immediate new office, the company secured nearby **15 Arcade**, West Avenue,<sup>103,104</sup> several doors toward 7<sup>th</sup> on the north side of Chesnut Street. A yellow line in **Figure 31** marks this milestone. Leading up to the great fire, the company had been in the midst of a seemingly logarithmic increase in collection boxes, having announced 300 boxes by June 28, 1851<sup>105</sup> and 400 boxes by October 29, 1851.<sup>106</sup>

Within a few months of the fire, one of the nation's very largest private posts capitulated to public demand for collect service. Blood's Despatch indeed **restored collect door service, but doubled the price** to 2 cents,<sup>107</sup> announced in newspapers by April 6, 1852.<sup>108</sup> Of course outbound letters delivered to the Philadelphia post office required pre-payment. By definition collect service means no pre-paid stamp, and created a new need for a collect 2 cents handstamp, Blood's Handstamp Type **20**. Double price must have strongly discouraged collect service,

---

<sup>100</sup> Ibid, page 49, electronic page 72.

<sup>101</sup> Ibid, pages 16, 20.

<sup>102</sup> Ibid, page 77.

<sup>103</sup> Ibid, page 18.

<sup>104</sup> Public Ledger December 31, 1851 Vol. XXXII No. 82, page 3.

<sup>105</sup> Public Ledger Vol. XXXI No. 81, page 2.

<sup>106</sup> Public Ledger Vol. XXXII No. 29, page 2.

<sup>107</sup> Morris, op. cit., *The Penny Post*, July 2016, page 18.

<sup>108</sup> Public Ledger Vol XXXIII No. 14.

and 2 cent stampless 1852 and 1853 covers are indeed very scarce. Courtesy Marc Stromberg, **Figure 32** is the earliest example, and the only recorded variety with "outer ring." A second strike at right virtually obliterated an underlying Blood's Handstamp Type 17, typical for this period, and suggesting May 20 was during 1852-54. Since combined with an advertising label this stampless cover was very likely 1852.



**Figure 25. One 15L15 cover combined with 1851 One Cent.**



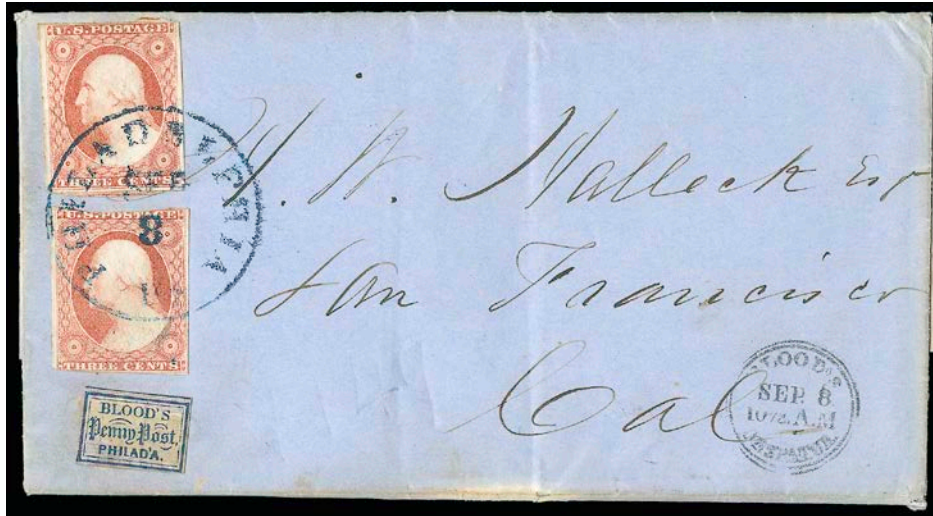
Figure 26. Two 15L15 cover combined with 1857 Three Cent.



Figure 27. Two 15L15 covers to Germany.



Figure 28. One 15L15 cover addressed to Britain.



**Figure 29. One 15L15 cover addressed to California.**

These events occurred about the same time as the earliest *Penny Post* 15L15 service was recorded, May 13, 1852 (census number 1), **Figure 5**. Within three months, by August 10, 1852 Blood's advertised 500 collection boxes.<sup>109,110</sup> By early September 1852 Blood's Despatch moved within the Arcade Building to **30 Arcade**, East Avenue,<sup>111</sup> presumably for more suitable and efficient mail service. A yellow line in **Figure 31** also indicates this location milestone as well.

The name Blood's *Penny Post* appeared in newspapers no later than December 4, 1852, **Figure 33**.<sup>112</sup> The company, nevertheless, retained the name and good will of Blood's Despatch, and for many years both titles seemed interchangeable. The title "Blood's Penny Post" appears to have slowly phased in during 1852. For the purpose of these articles the most relevant philatelic date for the new company name has been arbitrarily selected on the earliest recorded adhesive stamp on cover, May 13, 1852.

#### **Teese Penny Post**

The term "penny post" properly suggests one cent service. The name "Blood's Penny Post" or "Teese Penny Post" implies a company which delivered letters for one cent. Of course Blood's Despatch service at volume discounts had been one cent since early 1848. The first documented one cent flat rate service stamp was "Telegraph Despatch **P.O. 1 CT.**" late April 1848.<sup>113</sup>

<sup>109</sup> Public Ledger Vol. XXXIII, No. 118, page 2.

<sup>110</sup> Morris, op. cit., *The Penny Post*, July 2016, page 15.

<sup>111</sup> Public Ledger September 11, 1852, Vol. XXXIII, No. 146.

<sup>112</sup> Public Ledger Vol. XXXI No. 62, page 2.

<sup>113</sup> Bennett sale 283 lot 2142 on November 13, 2004.

By 1849 Postmaster General Cave Johnson reduced Philadelphia and other carrier department's fees in half to one cent in what today would be called a "gas war." In 1851 at Postmaster General Hall's discretion, all carrier departments were to manipulate their fees to two cents delivery, and free pick up. The author has previously proposed an 1851 Philadelphia carrier department defiance of Washington and continuation of the immediately prior two years market valued "one cent for all services" in the old city.<sup>114</sup> By contrast New York City private post charges held at two cents throughout the 1850's.<sup>115</sup>

In Philadelphia, Blood's Penny Post set the pace, and many small private posts mimicked the size and shape of Blood's small rectangular stamps.<sup>116</sup> During late 1852 one of many upstart private posts, Teese Penny Post, appeared, but as usual faded away within a few years.<sup>117,118</sup> Teese Penny Post issued only one design, listed by *Scott Catalogue* as 137L1 "blue bluish"<sup>119</sup> which was almost an identical twin to Blood's Penny Post 15L15 except name.

The earliest recorded Teese Penny Post 137L1 cover was a date certain September 10, 1852 folded letter,<sup>120</sup> **Figure 34 top**. Mitchell Teese had been listed in the 1852 city directory as "letter carrier," **Figure 34 middle**. The author has informally recorded sixteen Teese covers, half of which are tied, but only one cancelled by acid, **Figure 34 bottom**. The sender purchased a Teese Penny Post stamp, but the letter must have been mistakenly dropped into one of 500 Blood's collection boxes. Blood's Handstamp Type 17 and acid cancel confirm mistaken service by Blood's Penny Post on June 8, 1854. Mimicking is the sincerest form of flattery, and can also be very profitable.

### Daniel Otis Blood

Daniel Otis Blood was only 34 years old when he died on September 21, 1853 in Florence New Jersey per **Figure 35** obituary. A biography circa 1870's by D.O. Blood's son was discovered in the National Philatelic Collection in the Museum of Natural History in Washington D.C. by researcher Richard John PhD, and delivered in 1995 to the philatelic community by Stephen Roth.<sup>121</sup>

Born June 22, 1818 on a farm in Onondaga County, New York, Blood yearned for a mercantile life in a large city. His half-brother William Swain was a senior partner of a fledgling newspaper in Philadelphia, the Public Ledger. At age 20

---

<sup>114</sup> Vernon R. Morris, Jr., MD, "The Philadelphia Eagle Carrier Cancellations: Two Discoveries," *Collectors Club Philatelist*, Vol. 88, No. 3, May-June 2009, pages 149-151.

<sup>115</sup> October 25<sup>th</sup> email from John Bowman.

<sup>116</sup> Morris, op. cit., *The Penny Post*, January 2016, pages 28, 29.

<sup>117</sup> Steven M. Roth, "A Report on Some Short-Lived Local Posts of Philadelphia" *The Penny Post*, Vol. 3, No. 4, October 1993, pages 26-27.

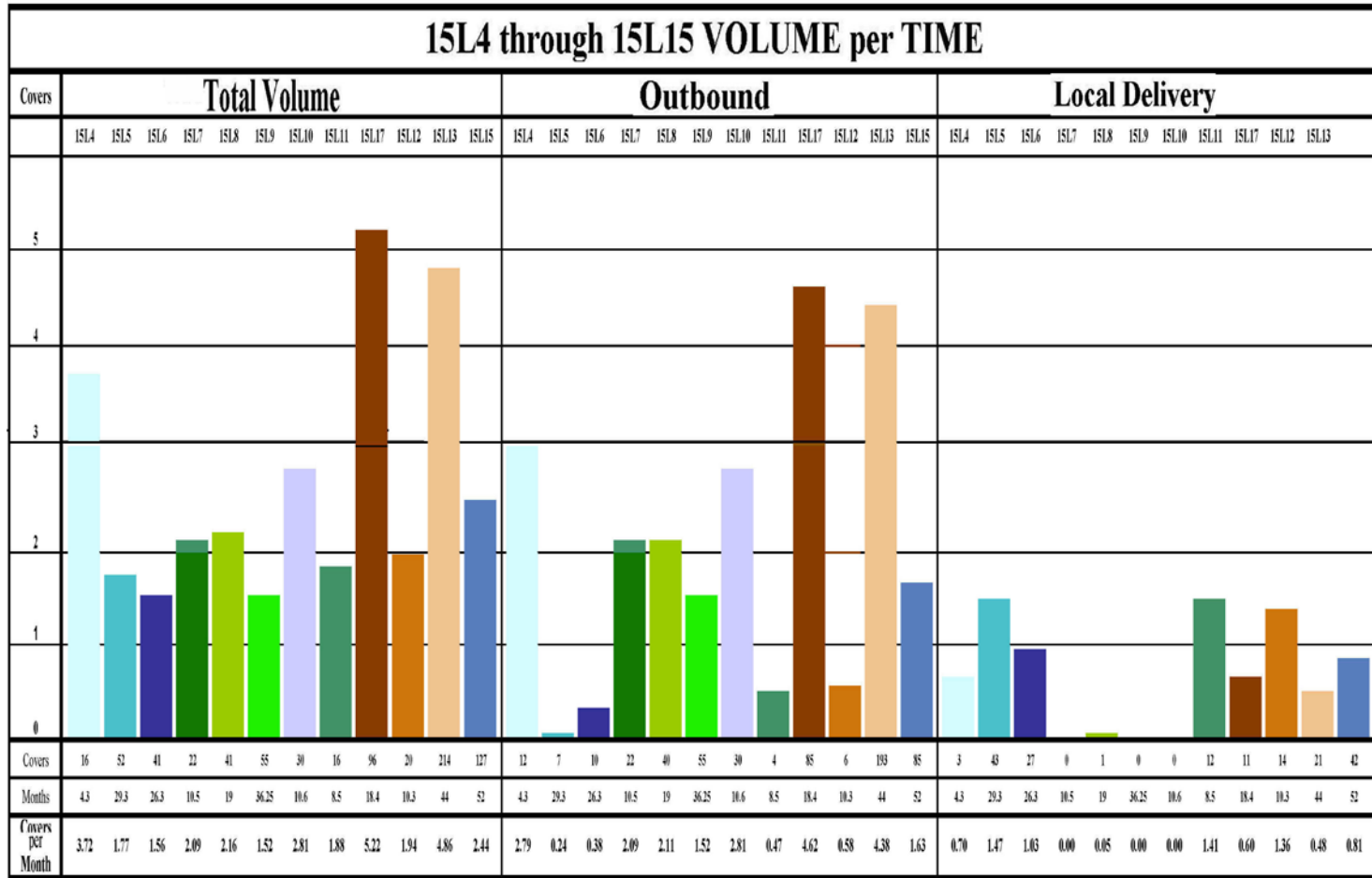
<sup>118</sup> Steven M. Roth, "Some Short-Lived Local Posts of Philadelphia: A Follow-Up" *The Penny Post*, Vol. 4, No. 4, October 1994, page 34.

<sup>119</sup> *Scott 2012 Specialized Catalogue of United States Stamps & Covers, Nineteenth Edition*, Scott Publishing Co., 2011, Sidney Ohio, page 564.

<sup>120</sup> Robert Siegel Auction Galleries, sale 908, March 17, 2006 lot 4984; ex Schwartz; 1982 PFC.

<sup>121</sup> W. Otis Blood, Sr., "Recollections of Blood's Despatch Post," *The Penny Post*, Vol. 5, No. 2, April 1995, pages 4-9.

Figure 30. Business activity of Blood's stamps.



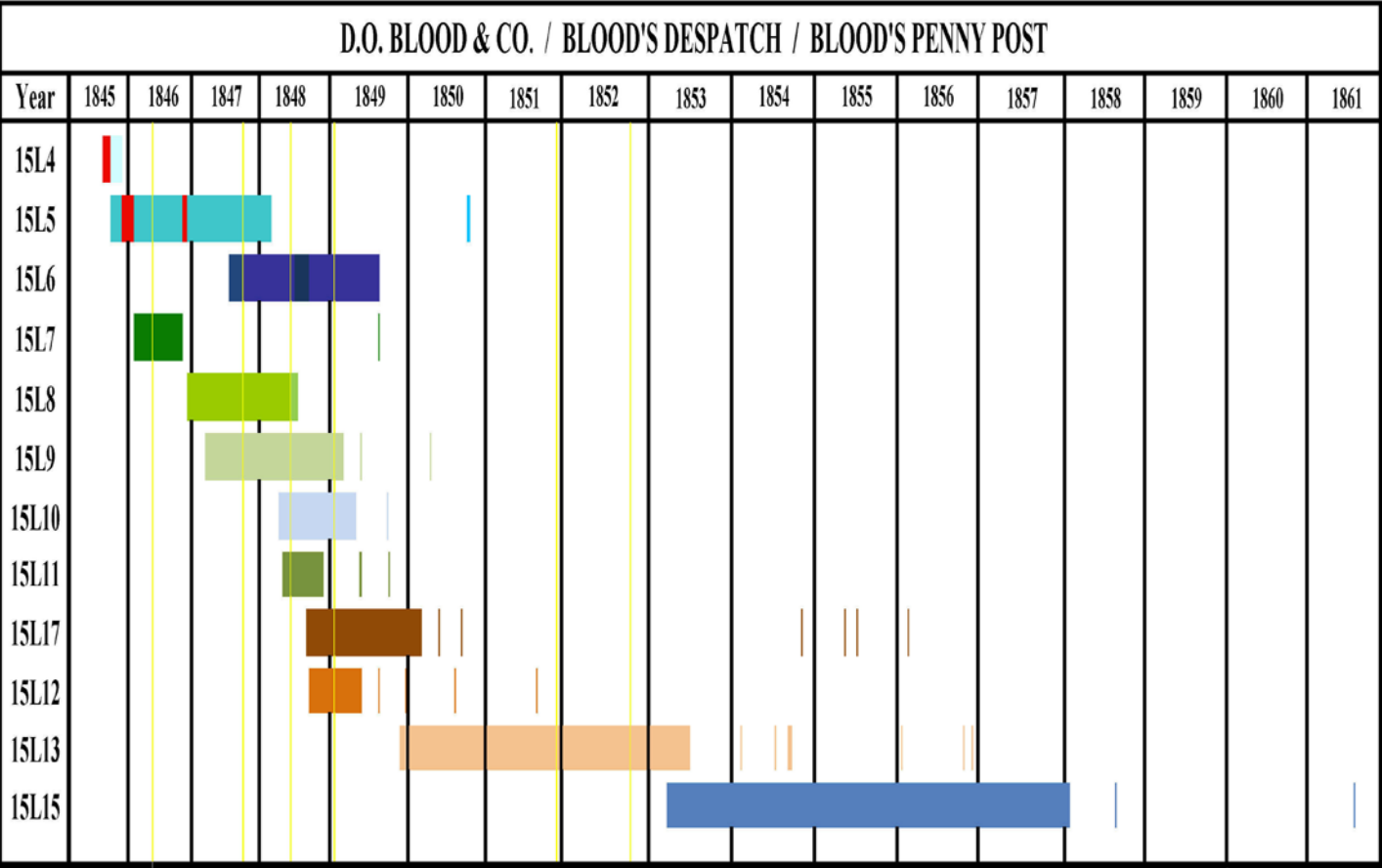


Figure 31. Blood's stamp issue timelines.



Figure 32. Handstamp Type 20 / 2 CTS with “outer rim” collect.

**B**LOOD'S PENNY POST delivers Letters, Papers and Circulars throughout the City and to the Post Office, at one cent each, if prepaid, or five cents for city letters, payable on delivery. Letters to the Post office, and answers to advertisements, must in all cases be prepaid one cent. At 7, 9<sup>1</sup>/<sub>2</sub>, 1 and 3 o'clock, throughout the City; at 7, 9<sup>1</sup>/<sub>2</sub>, 1, 3 and 7 P. M., to the Post office. Despatch Stamps and Government Stamps for sale at all the principal box stations. STAMPED ENVELOPES of buff, white, and laid paper, (extra quality) for sale at the PRINCIPAL OFFICE, No. 30 ARCADE. Persons having any supposed cause for complaint against any of the employees of the establishment will confer a favor by stating particulars in a note to the proprietors. BLOOD'S DESPATCH POST has, by strict attention to the wants of the community, become a necessary adjunct to every business and professional man. The recommendations of the press, and encomiums bestowed by individuals occupying the highest positions in the community, point to it as the **MODEL PENNY POST** of this country. det 1w5r  
DANL. O. BLOOD,  
CHAS. KOCHERSPERGER, { Proprietors.

Figure 33. Blood's Penny Post name in December 4, 1852 newspaper.

### OBITUARY.

"Tears ran down aged furrows then.

"And wept young eyes, and wept strong men!"

We are reminded of the above quotation on feeling and seeing the effect produced by the announcement of the death of DANIEL OTIS BLOOD, who departed this life, at his residence, near Florence, N. Jersey, on the evening of the 21st inst. The writer of this knew him well. Associated with the deceased for many years in the same establishment, we bear testimony to the moral worth, to the sterling integrity, that marked all his actions. Combining with sound judgment a firm and decided manner that allowed no difficulties, however numerous, to thwart his purpose when once fixed, he established a reputation for wisdom and sound policy that induced men of maturer years to seek his opinion and advice on subjects of weight and importance to themselves.

His Philosophy was sometimes thought visionary, yet the introduction into this community of the Despatch Post that bears his name, the planning and carrying into successful execution the Public Laundry, the system he originated in the business department of the establishment in which he was Chief Clerk, all show the master mind. Although aided in a great degree by his partner in the two first named schemes, yet to his firmness is attributed the final triumph over the many threatening difficulties that surrounded them. His death at this time is more to be deplored, for when about to realize the profits of his industry, the destroyer laid its cold hand upon him, and we are compelled once more to acknowledge the uncertainty of its coming.

His career on this earth has not been marked by any renowned deed, nor has he occupied such a position in the community that would lead us to expect his name recorded in history; yet in the circle in which he moved, and with all with whom he was brought into contact, an impression was created that will never be effaced while life with us lingers.

Although rough in his exterior, his constant urbanity and natural kindness of heart attracted many around him, who, now that he has gone, feel sensibly that Death has robbed them of a sincere friend, one whose words flowed with wisdom, and one whose example we could follow without fear of the world's reproof.

We bow the head with grief, but submit calmly, as calmly as we can, to the decree, believing in the words of holy writ: "That God's power is great, and His will must be done." But one more duty remains to be performed. His now inanimate body must be consigned to the grave. In a few hours, all that is left of our beloved friend, will be covered by its mother, Earth, and we then return to our worldly employments, feeling that a void exists in our midst, we fear never can be filled.

G. S. W.

Figure 35. Daniel Otis Blood obituary.

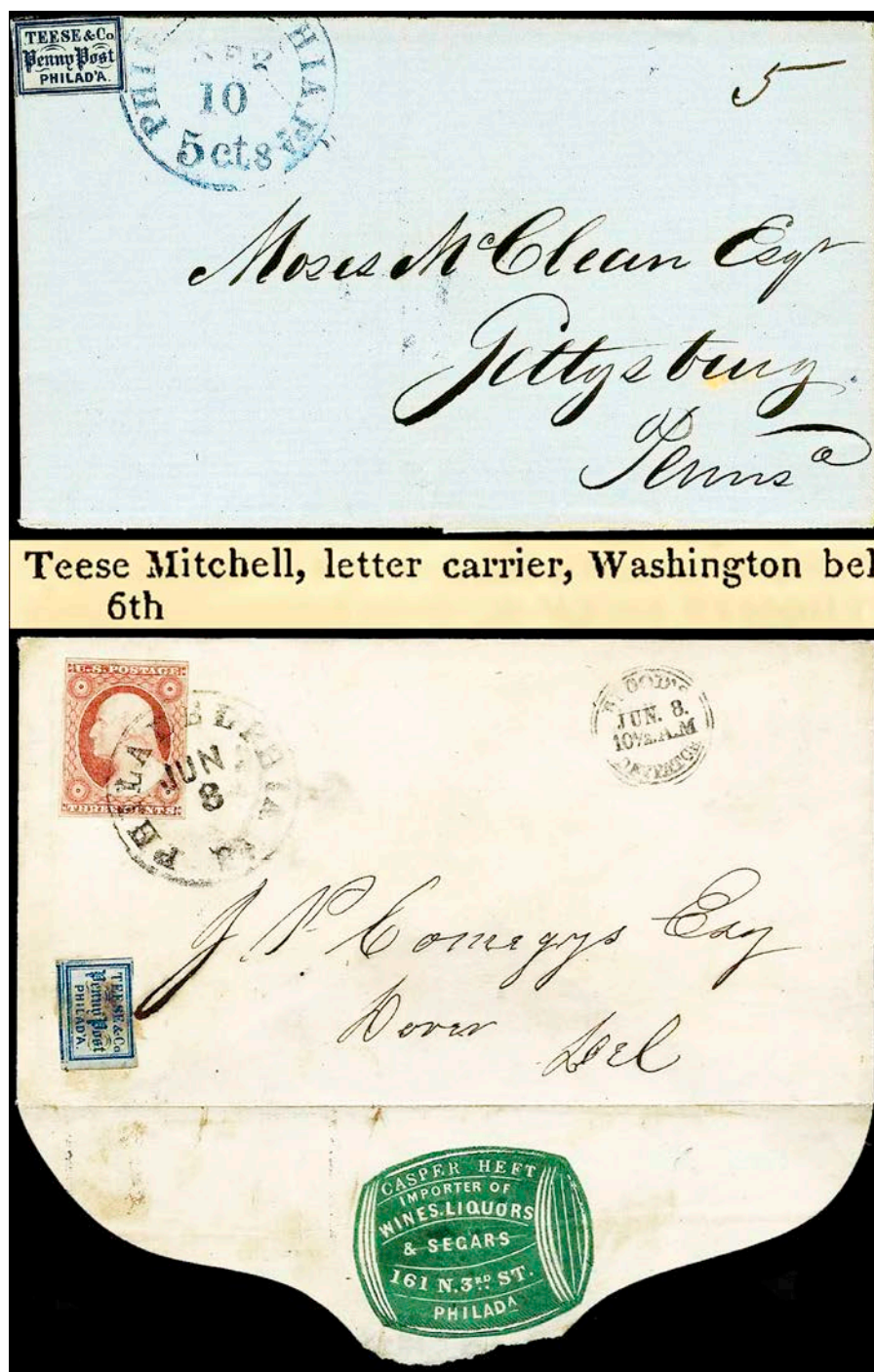


Figure 34. Earliest 1852 Teese at top; 1852 City Directory in middle, serviced by Blood's at bottom.

Blood arrived in Philadelphia in the summer of 1838,<sup>122</sup> was soon employed as bookkeeper for the Public Ledger, and quickly advanced to Chief Clerk and Cashier, a position which he held until 1851.

On June 30, 1845, the last day of the Independent Mail Companies, Blood had boldly purchased the Philadelphia Despatch Post, which had been the only private post in the United States for one and a half years, between December 1842 and June 17, 1844. Blood also operated a large Steam Laundry for transatlantic steamship companies and hotels. After working all day at the Public Ledger he spent nights overseeing D.O. Blood & Co.'s, which struggled during the initial two years. Blood was renown as indefatigable and persevering. Four boys were replaced with men. Wagons transported five carriers plus a driver. Immediate service was available to any location by a corps of not inexpensive readily available special messengers, who were popular during "Holidays" and St. Valentine's Day. Eventually 32 carriers were employed. 500 boxes were rented at one dollar a year.

Blood was not in a position of power or wealth, but was locally known for moral worth, sterling integrity, and being decisive. He displayed sound judgement, wisdom, and was a visionary. Despite a rough exterior, Blood was kind and beloved.

### **Charles Kockersperger**

Charles Kockersperger was born about 1826, making him only 23 in 1849, the most likely year that he joined Blood's Despatch. The 1850 census lists him as "carpenter." His father's death notice was in the Philadelphia Inquirer on June 23, 1846. At age 47 his father was listed at the northeast corner of 13<sup>th</sup> and Poplar, in Spring Garden District. Perhaps growing up in familiar Spring Garden was especially luring for Kockersperger.

**Figure 36** reveals that Charles Kockersperger had been the active manager and sole director of Blood's Despatch for four years, i.e. 1849. Kochersperger may have started much earlier, and by one account at the company inception in 1845, age 19, when Blood purchased "Halsey Despatch."<sup>123</sup>

On May 2, 1851 the two proprietors, Blood and Kochersperger, audaciously submitted to Postmaster General N.R. Hall a proposal they provide all city letter service including government mail, **Figure 37**, with deliveries every two hours. **Figure 38** may be the earliest Blood's cover addressed to Charles Kochersperger (census number 9), at the South East corner of Broad and Wallace, in Spring Garden District.

*Editor's Note: Figure 37 can be viewed on the website version of this article.*

---

<sup>122</sup> Vernon R. Morris, Jr., MD, "Blood's Part 4: 15L4," *The Penny Post*, Vol. 21, No. 4, October 2013, Whole No. 85, page 41.

<sup>123</sup> February 12, 2015 email from Dana Dorman of the Historical Society of Pennsylvania referencing a 1915 book "Post Office Buildings of Philadelphia" by Charles R. Barker, published by the City History Society of Philadelphia, 1915.

***Blood's Dispatch*** — The Sunday Dispatch of yesterday, says:—"The death of D. Otis Blood took place last week. Mr. Blood was an enterprising, useful citizen, and justly esteemed for his sound mind, excellent judgment, and many good personal qualities. He was the founder of that valuable public accommodation, Blood's Dispatch Post, which, by a long course of faithfulness and perseverance on the part of the proprietors, has become, to all intents and purposes, a public institution. For many years Mr. Blood paid great attention to this matter, but upon the establishment of the Camden Laundry, he devoted his care principally to that enterprise. Whilst he retained an interest in Blood's Dispatch, he ceased to be the active manager of the concern. His partner, Charles Kochersperger, has, for the last four years, been the sole director of the Dispatch. We, therefore, have every guarantee that the decease of Mr. Blood will not in any way effect the Dispatch Post. That very useful public convenience will be continued, as heretofore, by Mr. Kochersperger, without any change, except such as may be calculated to render it more useful than it ever was."

Figure 36. Blood's partner Charles Kochersperger.

### Spring Garden District

Spring Garden District was incorporated on March 22, 1813, and eventually became one of the ten largest cities in the United States<sup>124</sup> as the old city expanded north and toward the Schuylkill River. However, it ceased to exist with the 1854 Philadelphia Act of Consolidation, which expanded the boundary of the City of Philadelphia to the limits of the County of Philadelphia. Thirteen townships, 6 boroughs, and 9 districts surrounding the city<sup>125</sup> were absorbed over five years. The Philadelphia post office converted most of these outlying post offices into branches.<sup>126</sup> Furthermore, during this transition period and in 1856 an "Ordinance of Council" renumbered old city Philadelphia street addresses,<sup>127</sup> which was not implemented until January 1, 1857, and eventually incorporated into city directories for 1858.<sup>128</sup>

<sup>124</sup> [http://en.wikipedia.org/wiki/Spring\\_Garden\\_District,\\_Pennsylvania](http://en.wikipedia.org/wiki/Spring_Garden_District,_Pennsylvania).

<sup>125</sup> *Philadelphia; A 300 Year History*, Russell Weigley, Norton & Company, 1982, pages 359, 375.

<sup>126</sup> Stets, Robert J. and Kay, John L. "Independent Post Offices of Philadelphia County, 1800-1867", Associated Stamp Clubs of Southeastern Penna. And Delaware, Inc., Horsham, Pa. 1979.

<sup>127</sup> *Annals of Philadelphia, and Pennsylvania Volume III*, John Watson, 1891, Stuart, page 499.

<sup>128</sup> Personal email September 29, 2016 from Dana Dorman researcher of the Historical Society of Pennsylvania.

COPY of the Proposal and Recommendation submitted to the Postmaster General on the 3d May, 1851.

PHILADELPHIA, May 2d, 1851.  
To the Hon. N. R. Hall, Postmaster General of the United States.

SIR:—The undersigned, proprietors of Blood's Despatch Post, who have been engaged since 1845 in the business of delivering letters throughout the city of Philadelphia, propose to deliver all mailable matter which arrives by mail in Philadelphia or is deposited in the office there for distribution in that city.

They believe that by uniting the mail delivery with their present city delivery, the people of Philadelphia can be better accommodated, and at less rates than by any other system.

The Government Post-office has never been able to make more than one delivery in winter, and two deliveries in summer. This has been a serious inconvenience to the citizens of Philadelphia, whose letters in consequence of it, during half the year, lie in the office, sometimes for twenty-four hours after their arrival in the city. Of course that office has never at any time been able to acquire any considerable share of business as a city despatch post. In fact, until lately, it has never had any deposit box but at the central office, nor proposed to be a city post at all. And it has attempted to become a city post lately only in consequence of the great utility and success which has attended Blood's—an utility and success caused by the general fidelity and efficiency with which the latter has been managed.

The undersigned believe that the Government Post-office can never become an effective and satisfactory city post. It attempted the business in imitation of Blood's Despatch Post, about two years since, and totally failed. The reason is obvious. As a national office, its arrangements are necessarily subservient to its great and more peculiar business of receiving, assorting and despatching the national mails between the city and other places; and in the nature of its organization, it cannot thoroughly perform the business of a post intended for incessant communication between the citizens of the same city, nor, of course, deliver the mail letters with that expedition which the convenience of a great and populous city requires.

Blood's Despatch, on the contrary, has, at all seasons, made collections from over 300 boxes, in a circuit of twelve miles, four times every day, and from an unknown and untried office, without capital, and laboring equally against the good-will in favor of a government office, and the bad reputation brought upon the whole system of private posts by different individuals, who have undertaken and performed imperfectly the business, it has come to be so stable and trusted a concern, and to enjoy so considerable a public reputation in Philadelphia, that individuals of the highest influence, and whose names are rarely signed to recommendations of any kind, have expressed their wish that it should be adopted as the medium of all city deliveries whatsoever. The department is referred to the certificate and recommendations annexed.

The undersigned believe, from their experience of six years in the city delivery, that they perfectly understand that business. They have been recently informing themselves, by the reports of a gentleman who made the matter a study, of the arrangements of the penny posts in London, Edinburgh, Paris and other great cities of Europe, with a view to improve their own. The success which has attended their post enables them now to profit by these suggestions, and to insure an absolute certainty and an increased promptness and frequency of delivery, which, in the outset of their enterprise, its great expense made in some degree impossible to secure. They mean to put men of known integrity, intelligence and good education upon their routes, to assist expedition by the aid of horses and wagons, and to give generally to the whole establishment that character, activity and certainty to usefulness, towards which it has been aspiring and approaching, but which, as an untried and incipient enterprise, it was impossible, under any circumstances, fully to enjoy in its origin.

To secure an object which so many citizens of commanding influence in Philadelphia have expressed in the card annexed, to be desirable, the undersigned now propose to the General Post-office Department to make regular and prompt deliveries EVERY TWO HOURS throughout the day, along with their own letters, of all mailable matter arriving by mail or deposited in the Philadelphia Post-office for distribution in this city, letters at one cent, and other matter at the present Post-office rates. They will make returns for all matter to the City Postmaster, every day or week, as may be directed, and will give satisfactory security for the faithful discharge of whatsoever they may undertake in behalf of the United States.

Respectfully submitted by

DANIEL O. BLOOD,  
CHAS. KOCHERSBERGER,  
Proprietors of Blood's Despatch.

The undersigned have named in a separate enclosure the

Figure 37. May 2, 1851 proposal for all local government mail in Philadelphia.



**Figure 38. Letter addressed to Kockersperger residence.**



**Figure 39. Eastern State Penitentiary.**

Spring Garden's post office had been very nearby, located in the far southeastern corner of the district near 8<sup>th</sup> and Callowhill since 1842, but relocated in 1855 to the far western area at 24<sup>th</sup> and Center Streets close to the Schuylkill River.<sup>129</sup> Within two years, by 1857, a Sub-Post Office was established at 13<sup>th</sup> and Spring Garden Street.<sup>130</sup> For two years highly populated eastern Spring Garden must have been without their own post office, a situation where for several years Blood's Despatch had been unable to resist.

Private posts and Blood's Penny Post must have been embolden and free to conduct business in this robust market. At some point burgeoning Spring Garden must have no longer been considered inter-city mail with the old city, but intra-city mail. How intuitive was Blood for several years approaching, surrounding, and recently penetrating this rapidly growing district.<sup>131</sup>

From the data base of 140 ~~Penny Post~~ 15L15, ten were addressed to Spring Garden (census number 9, 63, 76, 83, 93, 95, 112, 118, 119, 128), **Figure 8**, representing 7% of all data, and 21% of all local deliveries! Four of the ten were subsequent to February 1, 1855 (census number 112, 118, 119, 128) while eastern Spring Garden had no post office.

### Eastern State Penitentiary

Three covers (census number 112, 118, 119) were addressed to Dr. Lassiter at Eastern State Penitentiary in the Spring Garden District. They comprise more than 2% of all ~~Penny Post~~ 15L15 data, and over 6% of the subset of 48 local deliveries. Eastern State Penitentiary was several blocks west of Broad Street; the remaining seven covers were all addressed east of Broad Street, to where the Blood's collection boxes had been established several years earlier.<sup>132</sup>

Dr. William W. Lassiter was the prison's resident physician from 1851 to 1856.<sup>133</sup> Entries in the Warden's journal for Dr. Lassiter include August 19, 1854 his assisting a female inmate delivering her baby; October 21, 1855 attending two inmates overcome by gas leak; and January 28, 1856 tending to a male inmate who attempted to castrate himself.

Eastern State Penitentiary is a U.S. National Historic Landmark.<sup>134</sup> A former American prison in Philadelphia, Eastern Penitentiary has been operational from 1829 until 1971, most recently renown for inmates Willie Sutton and Al Capone. Visited by notables Charles Dickens and Alexis de Tocqueville, it is currently a museum open daily, **Figure 39**, and has no inmates. Eastern State is considered the **world's first true penitentiary**, with a revolutionary Quaker inspired approach to move criminals toward spiritual reflection and penitence. A radial floor plan and system of solitary confinement had been the model for over 300 prisons worldwide.

---

<sup>129</sup> Morris, op. cit., *The Penny Post*, July 2015, page 52.

<sup>130</sup> Elliott Perry, "The Carrier Stamps of the United States," *The Chronicle*, Vol. 34, No. 4, Whole No. 116, November 1982, page 241.

<sup>131</sup> Morris, op. cit., January 2016, pages 56, 59, 60, 61.

<sup>132</sup> Ibid.

<sup>133</sup> Email communication November 17, 2016 from Annie Anderson, Senior Specialist, Research and Public Programming Eastern State Penitentiary.

<sup>134</sup> [https://en.wikipedia.org/wiki/Eastern\\_State\\_Penitentiary](https://en.wikipedia.org/wiki/Eastern_State_Penitentiary).

Small doors encouraged prisoners to bow. When a prisoner left his cell, an accompanying guard would wrap a hood over his head to prevent him from being recognized. Individual outdoor exercise and gardening areas were promoted, with walls so high to prevent communication. Inmate were allowed pets. The cells were made of concrete with a single glass skylight to suggest God is watching. Cell accommodations were advanced for their time, including a faucet with running water and a flush toilet. During winter months hot water pipes along one wall provided reasonable heat. This Pennsylvania System was in contrast to traditional physical punishment and forced work, the Auburn or New York System (Sing Sing).

### **Theory**

- 1) *Scott Catalogue* incorrectly lists 15L15 beginning in 1853 rather than evidence based 1852.
- 2) A predecessor or trial stamp color “Black on Bluish” variety may have existed.
- 3) Blood’s Penny Post pane format of 25 stamps replaced Blood’s Despatch 24 stamp format.
- 4) Blood’s Penny Post did not use self-advertising labels.
- 5) Blood’s first ~~Penny Post~~ stamp, 15L15, enjoyed relative exclusivity for 7 months; July 12, 1853 until February 13, 1854.
- 6) Blood’s Handstamps Type 17 and 19 were dominant for six years, from October 1851 until December 1857, overlapping for a few months beginning October 1854.
- 7) For the first time in three years a “2 Cent” due handstamp was necessary, Type 20, for newly reinstated collect door delivery service.
- 8) Door delivery collect service was very expensive and sparingly used.
- 9) All three handstamps during the 15L15 cluster period continued under Blood’s Despatch rather than the longer name Blood’s Penny Post.
- 10) From 1855 to 1857 Blood’s Penny Post was legally able to conduct business in Spring Garden District.
- 11) Deliveries west of Broad Street accounted for only 2% of deliveries, largely due to sparse settlement and poor cost efficiency.
- 12) Expensive registered Special Messenger service was confirmed by specific undated Special Messenger handstamps, and was very profitable during Holidays.
- 13) Underpaid unregistered large valentines were at risk for *late* regular delivery, confirmed by dated handstamp. No service and no handstamp were possible if the address was very distant and grossly underpaid.

- 14) Registered large valentines were given undated Special Messenger handstamps, but after February 14<sup>th</sup> were used in combination with a dated handstamp documenting Blood's immediate service well after the Holiday.
- 15) Whereas New York private posts and carrier department were able to maintain two cents single service, Philadelphia's highly competitive market rate had been reduced to one cent, but one where only Blood's Penny Post and the Carrier Department was able to survive for very long.

### 15L15 Summary

During the first half of the 1840's competition between government and private postal service had become existential, and by mid-1845 the Federal Government prevailed for intercity mail. Within four years angst redirected to several large cities and control of local letter service. Perhaps the greatest federal challenge was Blood's Despatch in Philadelphia. By early 1848 Blood's huge volume discounts had reduced much of the service to one cent. Also, by late April 1848 another private post sold the first one cent denominated stamps "Telegraph Despatch **P.O. 1 CT.**" By January 8, 1849 Blood's Despatch offered flat one cent single service prepaid stamps. Two months later Washington informally "Re-organized" the few carrier departments to reduce their fees in half, and each sold their own prepaid carrier department stamps for one cent. Two years later The postal Act of March 3, 1851 included universal federal carrier stamps. On May 2, 1851 Blood's proprietors boldly proposed they provide all Philadelphia intra-city letter service with deliveries every two hours. Although Washington manipulated carrier fees further, the tight competitive market in Philadelphia required their carrier department disobey and continue two years of ongoing "**one cent for all services.**"<sup>135</sup>

By **Spring 1852** Blood's Penny Post arrived on prepaid 15L15 stamps. The earliest recorded ~~Penny Post~~ 15L15 stamp has been arbitrarily selected as the philatelic beginning of Blood's Penny Post, May 13, 1852. A few weeks earlier by April 6, 1852 Blood's Despatch had agreed to reinstate collect door delivery at 2 cents, with the exception of Valentines and outbound mail. All of a sudden an apparent self-contradicting new company named Blood's Penny Post provided collect service for two cents.

By August 10, 1852 Blood's Penny Post reached **500 collection boxes** in various commercial places along their 12 mile circuit. By September 11, 1852 the company moved within the Arcade Building, from number 30 to number 15, on Chesnut Street between 6<sup>th</sup> and 7<sup>th</sup>. Many small competing private posts, such as Teese Penny Post in mid-September 1852, sold prepaid stamps for one cent which incredibly mimicked Blood's size and shape and name.

---

<sup>135</sup> Vernon R. Morris Jr., MD, "Two Philadelphia Eagle Carrier Cancellation Discoveries, New LRD, and a New Theory," *The Penny Post*, Vol. 17, No. 2, Whole No. 67, April 2009, pages 2, 4, 5, 17, 23, 24.

While the new company name was successful and long lasting, recently introduced handstamps retained Blood's Despatch. Type 17 and 19 were dominant for many years. The former confirmed date and time and appeared by October 2, 1851; the later also included the year, and became its successor in the fall of 1854.

A data base of 143 covers has been assembled, from which 140 genuine examples have been identified, 139 photographed (67% in color), and 134 destinations identified. The earliest recorded ~~Penny Post~~ 15L15 was date certain tied **May 13, 1852**. Greatest business activity clustered from **April 16, (1853) until January 7, (1858)**, 4 years 4 months. If far outliers are included ~~Penny Post~~ 15L15 philatelic lifespan was much longer, five and one half years, from **May 13, 1852 until August 13, 1858**, 6 years 3 months. The latest recorded date certain cover is a very far outlier **August 6, 1861**. Quantitative analysis revealed 1853 through 1854 were the years of greatest presence. Furthermore, a period of virtually exclusive service with no other issue actively at play existed from **July 12, 1853 through February 13, 1854**. Data has produced evidence of 2 genuine examples during 1852, one year earlier than classified by the *Scott Catalogue*.

The evidence in **Table I** confirms the clear majority of serviced outbound letters. From the entire data base **65% were outbound post office letters** and 35% city letters; the cluster period was about the same. Mid-century trend toward envelopes increased and reached over 80% of 15L15 covers.

Over **99% were cancelled**, virtually all by **Blood's acid**. Furthermore, auxiliary markings also appeared on **99%** of 15L15 covers, and averaged almost two markings per cover, about equal government versus Blood's. **94% were tied** to their cover, an exceedingly high amount. Blood's Penny Post cancel tied 90% of the data base. Government only markings accidentally tied 4%. **86% included a Blood's handstamp**.

Given no mechanical separation from panes, all were manual; the great majority cut, and very few torn. Size, shape, and Penny Post name were copied by many small competing private posts, such as Teese Penny Post. Blood's rectangular shapes accounted for 99%, and only two were an unintentional trapezoidal configuration.

Advertising labels were becoming a thing of the past, and no longer appear on Blood's Penny Post covers.

Almost **50%** of ~~Penny Post~~ 15L15 stamps were in combination with prepaid government postage. Most were 3 cent general issue, virtually all imperforate; one example combined with a 1 cent government stamps. For the first time in this series, combination with government postage occurred with postal stationary rather than adhesive stamps. Eight examples were all subsequent to the July 7, 1853 release of Nesbitt envelopes.

Almost **3% to foreign** destinations: 3 transatlantic covers, and one to Canada. For only a second time was a Blood's cover addressed to California.

Special Messenger service for large valentines had been becoming an emerging specialty. An in-depth analysis and plausible explanations have been proposed for Blood's private special handling modus operandi, from four very pertinent 15L15 and two contemporary 15L13 survivors. Probably no other private

post of the 1850's including those in New York had quite engineered such specialized registered local service.

Short biographies of the two enterprising proprietors have been included at this pivotal time in the history of such an incredible company. They stood up to the formidable Federal Government, even proposing to take over their Philadelphia letter distribution operation. Quite the opposite of 1842 New York when the carrier department purchased Greig's City Despatch. Even at one cent service, Blood's Penny Post survived and remained top dog in a tough city to carry on the fight. "Neither snow nor rain nor heat **nor fire** nor gloom of night stays Blood's messengers from the swift completion of appointed rounds" should have appeared over the Arcade Building, several doors away from Independence Hall.

~~~~~

**NOJEX**

**Newark, New Jersey**

**September 8-10, 2017**

**40+ Frames of Member Exhibits!!**

**Join us!**