

THE
MIKE FARRELL
❧ COLLECTION ❧
OF INDEPENDENT MAILS

INCLUDING THE HISTORY, FORGERIES, & FANTASIES OF
UNITED STATES, LOCAL POSTS, CARRIERS,
INDEPENDENT MAIL ROUTES, & EXPRESS CO.S

ADAMS & CO.'S EXPRESS

The information and identification within these selections is the individual work of the Farrell Collection. It is always recommended to consult multiple sources for additional information or opinions. Local post company descriptions are based on information available at the time of writing. Descriptions in the Farrell Collection were written based on personal research and sources including, but not limited to: Articles in the Carriers and Locals Society's The Penny Post; Amos Media's Scott Catalogue; Patton's The Private Local Post of the United States; Springer's Handbook of North American Cinderella Stamps; Lyons' Identifier for Carriers, Locals, Fakes Forgeries and Bogus Posts of the United States; articles in the USPCS's The Chronicle; Mosher's Catalog of Private Express Labels and Stamps; The Eastern Independent Mail Company Study Group's Eastern Independent Mail Companies and Express Mail Companies 1840-1845; Elliot Perry's Pat Paragraphs; James N. Drummond's Catalog of Philatelic Miscellany; and the notes of George Sloane and Gordon Stimmell.

Colors listed for stamps and forgeries are the opinions of the Farrell Collection based on viewing physical copies of the pieces under consistent lighting. Colors in the .pdfs may be slightly inaccurate due to manipulations from the scanning process, computer monitor settings, or (in event that the files are printed for offline viewing) the printing process.

Unless otherwise noted, stamps are identified by their Scott Catalogue numbers and forgeries are identified by their Lyons Identifier type. Scott numbers in parenthesis under listed forgeries represent approximately what stamp the forgery is attempting to imitate.

Copyright Amos Media Company - 2018

The Scott Numbers are the copyrighted property of Amos Media Company, and are used here under a licensing agreement with Amos. The marks Scott and Scott's are Registered in the U.S. Patent and Trademark Office, and are trademarks of Amos Media Company. No use may be made of these marks or of material in this publication, which is reprinted from a copyrighted publication of Amos Media Company., without the express written permission of Amos Media Company, Sidney, Ohio 45365.

ADAMS & CO. EXPRESS

Around 1840, Alvin Adams, a former produce merchant, began delivering small packages and letters between Boston and Worcester, Massachusetts. He later acquired the routes to New York City, formerly contracted by Harden Express. This started a rapid expansion of Adams and Co. routes, which reached into Pennsylvania, Maryland, and Ohio, as well as southern coastal states, and into Europe through agents. Incorporated as Adams Express in July 1854, it was one of the most successful companies of its time.



PARADE ENTRY IN 1887

In the 1850s, Adams partnered with a western post in California. This express failed and Adam's was forced to cover its debts before selling it off.

Another of Adam's subsidiary companies, Southern Express, was formed in the 1860s to serve the South during the Civil War.

In the 1900s, Adams & Co. were large stockholders in several railway lines, allowing them to deliver by train.

In 1918, Adams & Co.'s railway express business was forced by the US government to merge into the Railway Express Agency.

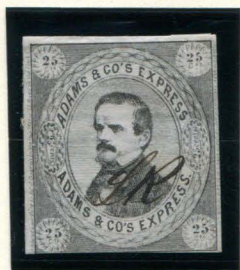
Adams & Co. Express continued, changing its business into an investment trust. In 2015, its name was changed to "Adams Diversified Equity Fund" to better identify its purpose.



AN EARLY GAS-POWERED TRUCK CARRIED MAIL IN 1904.

ADAMS & CO. EXPRESS

Operating solely on the Pacific coast, this partner company of Adams Express was started in November of 1849 by Alvin Adams, William B. Dinsmore, and D. H. Haskell. Haskell, originally from Boston, operated as manager. This post covered California and Oregon, buying out many smaller expresses. In 1854, they reorganized; Haskell and I. C. Woods took over as general partners, with Adams as a special partner. While successful at first; robberies, competition, and failed transactions drove it into debt. Alvin Adams covered the debts himself and shut the business down in 1855. It was purchased by Freeman & Co., who was purchased in turn by Wells, Fargo Co.



1L2 : TYPE II
GENUINE
25¢ BLACK
BLACK MS INITIALS "LR"



1L2 : TYPE II
GENUINE
25¢ BLACK
BLACK MS INITIALS "ICW"

The 25¢ stamps shown here feature the bust of D. H. Haskell. First issued in 1854, they represent some of the earliest adhesive franks in the west. The initials on the 1L2 stamp to the left read "LR" for Louis Reed. Less common are the initials on the 1L2 stamp to the right that read "ICW", for Isaiah C. Wood.

It is believed that the pink stamps (example below) were not entirely intended for postal use, and were instead used to send money, as they could be redeemed for their value at any Adams offices in the west.



1L3 : TYPE II
GENUINE
25¢ BLACK ON
SURFACE GLAZED PINK
CARD

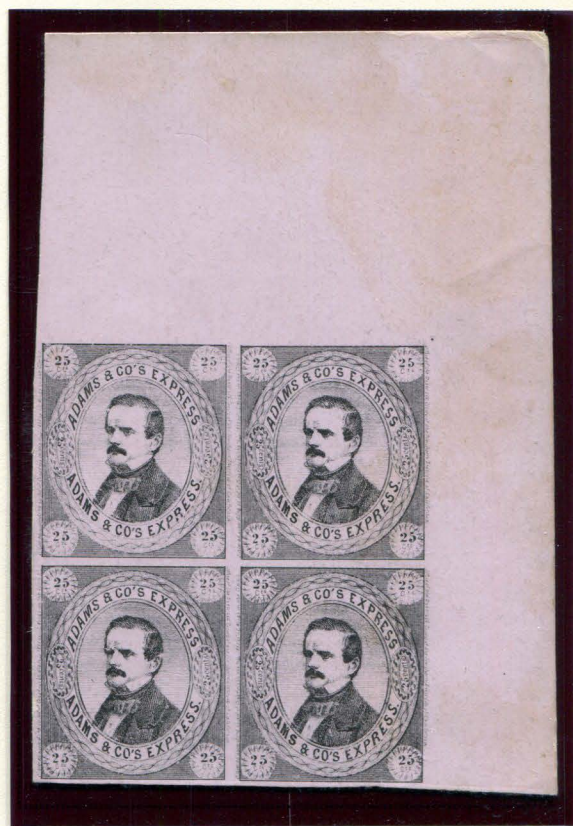


1L4 : TYPE II
GENUINE
25¢ BLACK
BLACK MS INITIALS "LR"
PF CERT 0365316

ADAMS & CO. EXPRESS



1L2 : TYPE II
GENUINE
25c BLACK
BLACK MS INITIALS "ICW"
BLOCK OF FOUR
TOP RIGHT CORNER



1L3 : TYPE II
GENUINE
25c BLACK ON
SURFACE GLAZED PINK CARD
BLOCK OF FOUR
TOP RIGHT CORNER

ADAMS & CO. EXPRESS



112: TYPE II: GENUINE
25c BLACK ON WHITE WOVE PAPER
SHEET OF FORTY



ADAMS & CO. EXPRESS

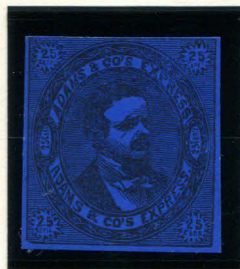
113 : TYPE II : GENUINE
25¢ BLACK ON SURFACE GLAZED PINK CARD
SHEET OF FORTY

ADAMS & CO. EXPRESS

Forgeries of both the Type I and Type II stamps were made by S. A. Taylor and by J. W. Scott.



FORGERY A
TAYLOR - FORM 10
25¢ BLACK
ON PALE GREEN H LAID
(1L1)



FORGERY A
TAYLOR - FORM 10
25¢ BLACK
ON BRIGHT NAVY BLUE SC
(1L1)



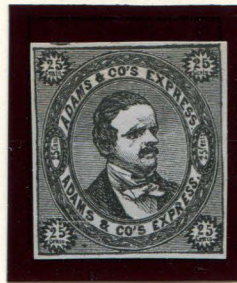
FORGERY A
TAYLOR
25¢ ORANGE BROWN
ON WHITE
(1L1)



FORGERY A
TAYLOR
25¢ BLACK
ON WHITE H LAID
(1L1)



FORGERY B
SCOTT - ALBUM CUT
25¢ BLACK
ON WHITE
(1L1)



FORGERY B
SCOTT
25¢ BLACK
ON WHITE
(1L1)



FORGERY B
SCOTT
25¢ BLACK
ON BUFF
(1L1)



FORGERY B
SCOTT
25¢ BLACK
ON PALE BLUE
(1L1)



FORGERY B
SCOTT
25¢ BLACK
ON PALE GRAY BLUE
(1L1)

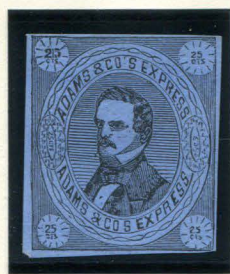


FORGERY B
SCOTT
25¢ BLACK
ON GRAY
(1L1)



FORGERY B
SCOTT
25¢ BLACK
ON PALE GRAY GREEN
(1L1)

ADAMS & CO. EXPRESS



FORGERY A
TAYLOR - FORM 3
25c BLACK
ON LIGHT BLUE SC
(1L2)



FORGERY A
TAYLOR - FORM 3
25c BLACK
ON BRIGHT GREEN SC
(1L2)



FORGERY A
TAYLOR - FORM 3
25c BLACK
ON MAGENTA SC
(1L2)



FORGERY A
TAYLOR - FORM 14
25c BLACKISH BROWN
ON WHITE
(1L2)



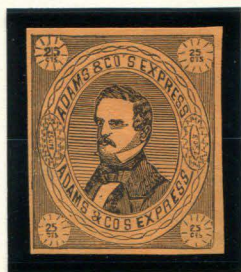
FORGERY A
TAYLOR - FORM 14
25c BROWN
ON CREAM H LAID
(1L2)



FORGERY A
TAYLOR - FORM 15
25c ULTRAMARINE
ON WHITE H LAID
(1L2)



FORGERY A
TAYLOR - FORM 15
25c ULTRAMARINE
ON WHITE V LAID
(1L2)



FORGERY A
TAYLOR - FORM 15
25c BLACK
ON ORANGE BUFF
(1L2)



FORGERY A
TAYLOR - FORM 15
25c BLACK
ON VIOLET BLUE
(1L2)



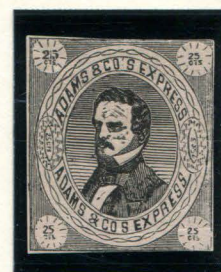
FORGERY A
TAYLOR - FORM 15
25c BLACK
ON GRAY GREEN
(1L2)



FORGERY A1
TAYLOR - FORM 17
25c BLACK
ON WHITE
(1L2)



FORGERY A1
TAYLOR - FORM 17
25c BLACK
ON CREAM
(1L2)



FORGERY A1
TAYLOR - FORM 17
25c BLACK
ON PINKISH CREAM
(1L2)

ADAMS & CO. EXPRESS



FORGERY A
TAYLOR
25¢ GRAYISH BLACK
ON WHITE
(1L2)



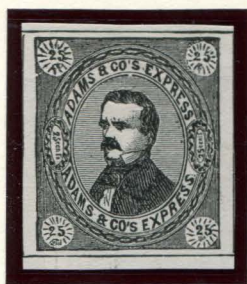
FORGERY A
TAYLOR
25¢ GRAYISH BLACK
ON YELLOWISH
(1L2)



FORGERY A
TAYLOR
25¢ BLACK
ON WHITE
(1L2)



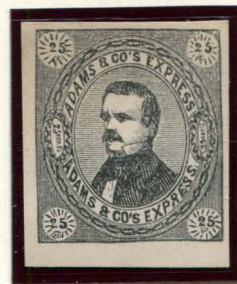
FORGERY A
TAYLOR
25¢ BLACK
ON CREAM
(1L2)



FORGERY B
SCOTT - ALBUM CUT
25¢ BLACK
ON WHITE
(1L2)



FORGERY B
SCOTT
25¢ BLACK
ON WHITE
(1L2)



FORGERY B
SCOTT
25¢ BLACK
ON BUFF
(1L2)

While no forgeries are known to exist of the other stamps "Adams & Co.'s Express" issued, Scott did publish his own design of the Type IV stamp in his International Albums.



(FORGERY)
SCOTT - ALBUM CUT
25¢ BLACK
ON WHITE
(1L5)