

THE
MIKE FARRELL
COLLECTION
OF INDEPENDENT MAILS

INCLUDING THE HISTORY, FORGERIES, & FANTASIES OF
UNITED STATES, LOCAL POSTS, CARRIERS,
INDEPENDENT MAIL ROUTES, & EXPRESS CO.S

AMERICAN EXPRESS CO.

The information and identification within these selections is the individual work of the Farrell Collection. It is always recommended to consult multiple sources for additional information or opinions. Local post company descriptions are based on information available at the time of writing. Descriptions in the Farrell Collection were written based on personal research and sources including, but not limited to: Articles in the Carriers and Locals Society's The Penny Post; Amos Media's Scott Catalogue; Patton's The Private Local Post of the United States; Springer's Handbook of North American Cinderella Stamps; Lyons' Identifier for Carriers, Locals, Fakes Forgeries and Bogus Posts of the United States; articles in the USPCS's The Chronicle; Mosher's Catalog of Private Express Labels and Stamps; The Eastern Independent Mail Company Study Group's Eastern Independent Mail Companies and Express Mail Companies 1840-1845; Elliot Perry's Pat Paragraphs; James N. Drummond's Catalog of Philatelic Miscellany; and the notes of George Sloane and Gordon Stimmell.

Colors listed for stamps and forgeries are the opinions of the Farrell Collection based on viewing physical copies of the pieces under consistent lighting. Colors in the .pdfs may be slightly inaccurate due to manipulations from the scanning process, computer monitor settings, or (in event that the files are printed for offline viewing) the printing process.

Unless otherwise noted, stamps are identified by their Scott Catalogue numbers and forgeries are identified by their Lyons Identifier type. Scott numbers in parenthesis under listed forgeries represent approximately what stamp the forgery is attempting to imitate.

Copyright Amos Media Company - 2018

The Scott Numbers are the copyrighted property of Amos Media Company, and are used here under a licensing agreement with Amos. The marks Scott and Scott's are Registered in the U.S. Patent and Trademark Office, and are trademarks of Amos Media Company. No use may be made of these marks or of material in this publication, which is reprinted from a copyrighted publication of Amos Media Company., without the express written permission of Amos Media Company, Sidney, Ohio 45365.

AMERICAN EXPRESS CO.

This post, running from 1856 to 1858 was thought to have been started by Jacob T. Smith and Charles and Frank Dobson. This post has no relation to the well-known financial services company of the same name.

There is little information available regarding the service of the American Express Co. local post. Although forgeries of the rectangular, green 2¢ stamp, only about five examples are known that are considered genuine.



4L1
GENUINE
2¢ BLACK
ON LIGHT GREEN SC GLAZED
PF CERT 0329789

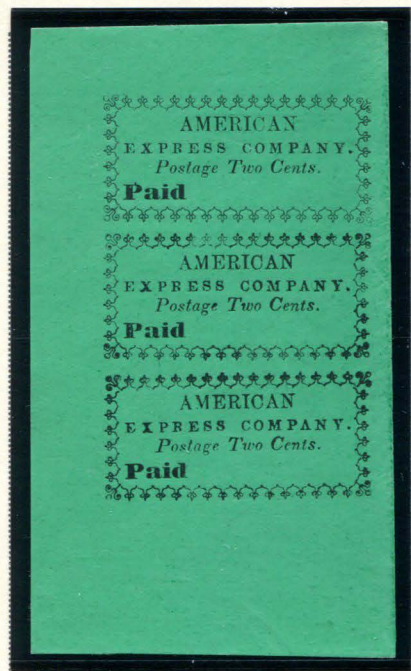
After the Dobson brothers withdrew from the firm, it became the Smith's City Express. William C. Smith then continued the operation into 1861. The Smith's stamps are similar in design to their American Express predecessor.



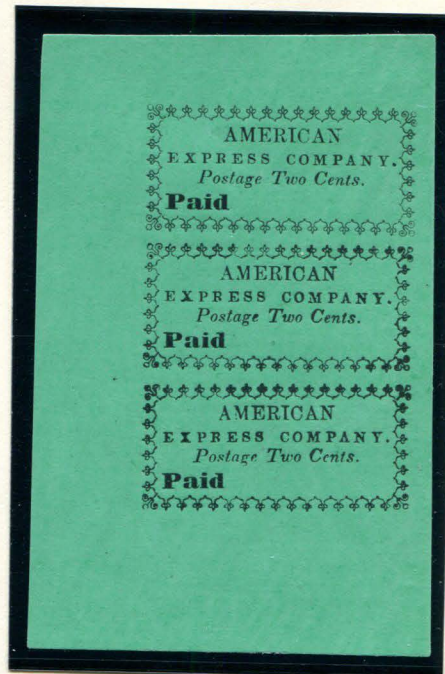
168L1
PHOTOCOPY OF GENUINE
2¢ BLACK
ON LIGHT GREEN SC GLAZED
-SEE SMITH'S EXPRESS PAGE-

AMERICAN EXPRESS CO.

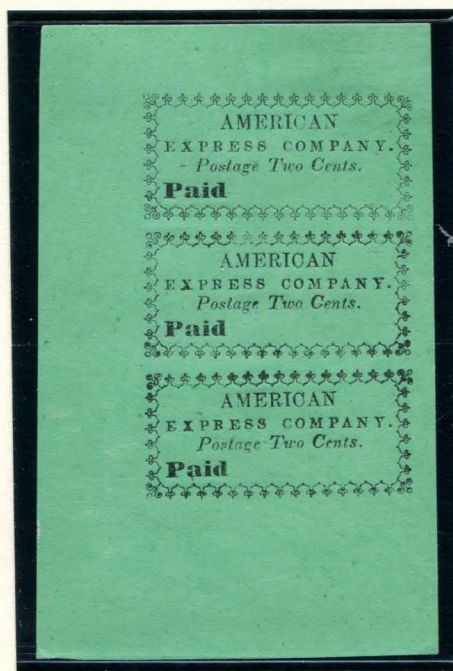
Forgeries of the American Express Co. stamps are common, and were made by several different forgers.



FORGERY A - HUSSEY
2¢ BLACK ON GREEN (SHADE) SC GLAZED
VERTICAL STRIP OF THREE - POSITIONS 1, 2, & 3
(4LI)



FORGERY A - HUSSEY
2¢ BLACK ON GREEN (SHADE) SC GLAZED
VERTICAL STRIP OF THREE - POSITIONS 1, 2, & 3
(4LI)



FORGERY A - HUSSEY
2¢ BLACK ON GREEN (SHADE) SC GLAZED
VERTICAL STRIP OF THREE - POSITIONS 1, 2, & 3
(4LI)

AMERICAN EXPRESS CO.



FORGERY B
2¢ BLACK
ON VERMILION SC
(4L1)



FORGERY B
2¢ BLACK
ON GREEN SC GLAZED
(4L1)



FORGERY C
2¢ BLACK
ON LIGHT GREEN (SHADE)
SC GLAZED
(4L1)



FORGERY C
2¢ BLACK
ON GREEN (SHADE)
SC GLAZED
(4L1)



FORGERY C
2¢ BLACK
ON GREEN (SHADE)
SC GLAZED
(4L1)



FORGERY C
2¢ BLACK
ON LIGHT GREEN (SHADE)
SC GLAZED
PARTIAL DOUBLE OVERPRINT
(4L1)



FORGERY D
2¢ BLACK
ON GOLD YELLOW SC
(4L1)



FORGERY D
2¢ BLACK
ON VERMILION SC
(4L1)



FORGERY D
2¢ BLACK
ON GREEN
(4L1)



FORGERY E
2¢ BLACK
ON WHITE
(4L1)



FORGERY E
2¢ BLACK
ON GREEN GLAZED
(4L1)



FORGERY E
2¢ BLACK
ON ROYAL BLUE SC
(4L1)

AMERICAN EXPRESS CO.



FORGERY E
2¢ BLACK
ON YELLOW SC
(4L1)



FORGERY E
2¢ BLACK
ON VERMILION SC
(4L1)



FORGERY E
2¢ BLACK
ON CRIMSON SC
(4L1)

Scott produced two different forgeries for this post. Both forgeries were based on illustrations he published in his stamp collectors albums.



FORGERY F & FORGERY G
ILLUSTRATIONS
CUT FROM SCOTT ALBUM
PAGE 369



FORGERY F
SCOTT
2¢ BLACK
ON GREEN SC GLAZED
(4L1)



FORGERY F1
SCOTT
2¢ BLACK
ON GREEN SC GLAZED
(4L1)



FORGERY G
SCOTT
2¢ BLACK
ON WHITE
(4L1)



FORGERY J
MOENS
2¢ BLACK
ON BRONZE SC
(4L1)
WITH MS CANCEL



FORGERY J
MOENS - MODERN
2¢ BLACK
ON RED SC GLAZED CARD
(4L1)