

THE  
MIKE FARRELL  
COLLECTION  
OF INDEPENDENT MAILS

INCLUDING THE HISTORY, FORGERIES, & FANTASIES OF  
UNITED STATES, LOCAL POSTS, CARRIERS,  
INDEPENDENT MAIL ROUTES, & EXPRESS CO.S

BERFORD & CO.'S EXPRESS

The information and identification within these selections is the individual work of the Farrell Collection. It is always recommended to consult multiple sources for additional information or opinions. Local post company descriptions are based on information available at the time of writing. Descriptions in the Farrell Collection were written based on personal research and sources including, but not limited to: Articles in the Carriers and Locals Society's The Penny Post; Amos Media's Scott Catalogue; Patton's The Private Local Post of the United States; Springer's Handbook of North American Cinderella Stamps; Lyons' Identifier for Carriers, Locals, Fakes Forgeries and Bogus Posts of the United States; articles in the USPS's The Chronicle; Mosher's Catalog of Private Express Labels and Stamps; The Eastern Independent Mail Company Study Group's Eastern Independent Mail Companies and Express Mail Companies 1840-1845; Elliot Perry's Pat Paragraphs; James N. Drummond's Catalog of Philatelic Miscellany; and the notes of George Sloane and Gordon Stimmell.

Colors listed for stamps and forgeries are the opinions of the Farrell Collection based on viewing physical copies of the pieces under consistent lighting. Colors in the .pdfs may be slightly inaccurate due to manipulations from the scanning process, computer monitor settings, or (in event that the files are printed for offline viewing) the printing process.

Unless otherwise noted, stamps are identified by their Scott Catalogue numbers and forgeries are identified by their Lyons Identifier type. Scott numbers in parenthesis under listed forgeries represent approximately what stamp the forgery is attempting to imitate.

Copyright Amos Media Company - 2018

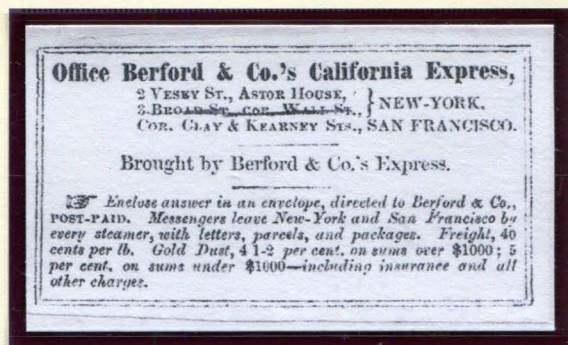
The Scott Numbers are the copyrighted property of Amos Media Company, and are used here under a licensing agreement with Amos. The marks Scott and Scott's are Registered in the U.S. Patent and Trademark Office, and are trademarks of Amos Media Company. No use may be made of these marks or of material in this publication, which is reprinted from a copyrighted publication of Amos Media Company., without the express written permission of Amos Media Company, Sidney, Ohio 45365.



# BERFORD & CO.'S EXPRESS

Organized and operated by Richard G. Berford and Loring L. Lombard in the fall of 1849, Berford & Co.'s Express carried letters, newspapers, and packages. Headquartered in San Francisco, they advertised "For all parts of the States, and the only Express to San Jose."

Although their service was focused on west coast deliveries, their agents and connections spanned a wide range. They served from the west coast of North America to New York City by steamer, making connections in the West Indies, Panama, and ports on the west coast of South America, as well as Hawaii. Through connections with other express companies, they also served the North American gold mines, San Jose, and Monterey by stage coach. The company ran for about four years, before being sold to Wells, Fargo & Co. in June 1854.



EXAMPLE OF AN EXPRESS LABEL ADVERTISING OFFICES IN NEW YORK CITY AND SAN FRANCISCO.

The genuine stamps are very scarce. Because of the scarcity, counterfeits made by forgers such as Taylor, Scott, and Casey, have appeared on covers and partials. One such example is shown below.



FORGERY C - 10¢  
SCOTT  
LILAC ON WHITE  
(11L3)  
ON PIECE  
FAKE RED HANDSTAMP: \*\*61 DEC 9



# BERFORD & CO.'S EXPRESS



FORGERY A - 3¢  
CASEY  
BLACK ON WHITE  
(11L1)



FORGERY A - 6¢  
CASEY  
YELLOW GREEN ON WHITE  
(11L2)



FORGERY A - 10¢  
CASEY  
BROWN ON WHITE  
(11L3)



FORGERY A - 25¢  
CASEY  
ORANGE RED ON WHITE  
(11L4)

The "A" forgeries of this post are attributed to J. J. Casey, who was the editor of the "*American Journal of Philately*", which was owned by Scott.



FORGERY A - 3¢  
CASEY  
BLACK ON WHITE  
BLOCK OF EIGHT  
(11L1)



# BERFORD & CO.'S EXPRESS



FORGERY A - 6¢  
CASEY  
YELLOW GREEN  
ON WHITE  
BLOCK OF SIX  
(11L2)



FORGERY A - 10¢  
CASEY  
BROWN  
ON WHITE  
STRIP OF THREE  
(11L3)



FORGERY A - 25¢  
CASEY  
ORANGE RED  
ON WHITE  
BLOCK OF SIX  
(11L4)



# BERFORD & CO.'S EXPRESS

The S. A. Taylor forgeries are listed as Forgery B. He only made forgeries of the 3¢ nL1 stamp, and unlike most of Taylor's forgeries, these appear in only a few colors. The stamps on forms S5 and S6 have an extra identifier: there is a break on the left side of the "O" of "ASTOR".



FORGERY B - 3¢  
TAYLOR - FORM 12  
RED  
ON WHITE  
(11L1)



FORGERY B - 3¢  
TAYLOR - FORM 12  
RED  
ON GRAY  
(11L1)



FORGERY B - 3¢  
TAYLOR - FORM AB7  
BLACK  
ON OFF-WHITE  
(11L1)



FORGERY B - 3¢  
TAYLOR - FORM AB7  
BLACK  
ON YELLOW  
(11L1)



FORGERY B - 3¢  
TAYLOR - FORM S5  
GREEN  
ON WHITE  
(11L1)



FORGERY B - 3¢  
TAYLOR - FORM S5  
GREEN  
ON CREAM H LAID  
(11L1)



# BERFORD & CO.'S EXPRESS



FORGERY B - 3¢  
TAYLOR - FORM S6  
BLACK  
ON BUFF  
(11L1)



FORGERY B - 3¢  
TAYLOR - FORM S6  
PINK  
ON WHITE  
(11L1)



FORGERY B - 3¢  
TAYLOR - FORM S6  
PINK  
ON WHITE WMK  
(11L1)



FORGERY B - 3¢  
TAYLOR - FORM S6  
BRIGHT PINK  
ON WHITE  
(11L1)



FORGERY B - 3¢  
TAYLOR - FORM S6  
BRIGHT PINK  
ON WHITE WMK  
(11L1)



FORGERY B - 3¢  
TAYLOR - FORM S6  
BRIGHT PINK  
ON CREAM  
(11L1)



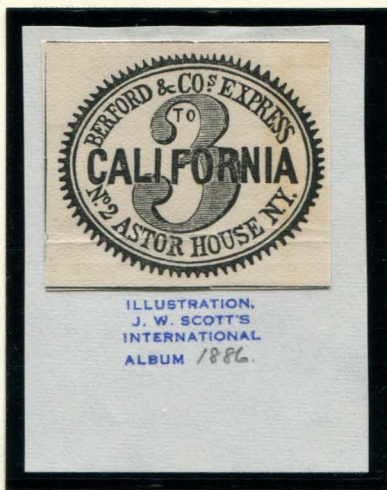
FORGERY B - 3¢  
TAYLOR - FORM S6  
BRIGHT PINK  
ON CREAM WMK  
(11L1)



FORGERY B - 3¢  
TAYLOR  
BLACK  
ON BUFF  
(11L1)



# BERFORD & CO.'S EXPRESS



FORGERY C - 3¢  
SCOTT  
ILLUSTRATION CUT  
FROM ALBUM - 1886  
(11L1)

ILLUSTRATION,  
J. W. SCOTT'S  
INTERNATIONAL  
ALBUM



1888

FORGERY C - 3¢, 6¢, 10¢, 25¢  
SCOTT  
ILLUSTRATION CUT FROM ALBUM - 1888  
(11L1 - 11L4)



FORGERY C - 3¢  
SCOTT  
BLACK  
ON THIN WHITE  
(11L1)



FORGERY C - 3¢  
SCOTT  
BLACK  
ON THICK WHITE  
(11L1)



# BERFORD & CO.'S EXPRESS



FORGERY C - 6¢  
SCOTT  
GREEN  
ON THIN WHITE  
(11L2)



FORGERY C - 6¢  
SCOTT  
GREEN  
ON THICK WHITE  
(11L2)



FORGERY C - 10¢  
SCOTT  
VIOLET  
ON THIN WHITE  
(11L3)



FORGERY C - 10¢  
SCOTT  
LILAC (SHADE)  
ON THICK WHITE  
(11L3)



FORGERY C - 10¢  
SCOTT  
LILAC (SHADE)  
ON THICK WHITE  
(11L3)



FORGERY C - 25¢  
SCOTT  
ORANGE (SHADE)  
ON THIN WHITE  
(11L4)



FORGERY C - 25¢  
SCOTT  
ORANGE (SHADE)  
ON THICK WHITE  
(11L4)



FORGERY C - 25¢  
SCOTT  
ORANGE (SHADE)  
ON THICK WHITE  
(11L4)