

THE  
MIKE FARRELL  
COLLECTION  
OF INDEPENDENT MAILS

INCLUDING THE HISTORY, FORGERIES, & FANTASIES OF  
UNITED STATES, LOCAL POSTS, CARRIERS,  
INDEPENDENT MAIL ROUTES, & EXPRESS CO.S

BOUTON'S CITY DISPATCH POST

The information and identification within these selections is the individual work of the Farrell Collection. It is always recommended to consult multiple sources for additional information or opinions. Local post company descriptions are based on information available at the time of writing. Descriptions in the Farrell Collection were written based on personal research and sources including, but not limited to: Articles in the Carriers and Locals Society's The Penny Post; Amos Media's Scott Catalogue; Patton's The Private Local Post of the United States; Springer's Handbook of North American Cinderella Stamps; Lyons' Identifier for Carriers, Locals, Fakes Forgeries and Bogus Posts of the United States; articles in the USPS's The Chronicle; Mosher's Catalog of Private Express Labels and Stamps; The Eastern Independent Mail Company Study Group's Eastern Independent Mail Companies and Express Mail Companies 1840-1845; Elliot Perry's Pat Paragraphs; James N. Drummond's Catalog of Philatelic Miscellany; and the notes of George Sloane and Gordon Stimmell.

Colors listed for stamps and forgeries are the opinions of the Farrell Collection based on viewing physical copies of the pieces under consistent lighting. Colors in the .pdfs may be slightly inaccurate due to manipulations from the scanning process, computer monitor settings, or (in event that the files are printed for offline viewing) the printing process.

Unless otherwise noted, stamps are identified by their Scott Catalogue numbers and forgeries are identified by their Lyons Identifier type. Scott numbers in parenthesis under listed forgeries represent approximately what stamp the forgery is attempting to imitate.

Copyright Amos Media Company - 2018

The Scott Numbers are the copyrighted property of Amos Media Company, and are used here under a licensing agreement with Amos. The marks Scott and Scott's are Registered in the U.S. Patent and Trademark Office, and are trademarks of Amos Media Company. No use may be made of these marks or of material in this publication, which is reprinted from a copyrighted publication of Amos Media Company., without the express written permission of Amos Media Company, Sidney, Ohio 45365.



# BOUTON'S CITY DISPATCH POST

In the fall of 1847, John R. Bouton began combining his New York local posts, Franklin City Despatch Post and Bouton's Manhattan Express, into a single service under the name Bouton's City Dispatch Post. The post of Dupuy & Schenck was also likely absorbed by Bouton around this time. Remaining stamps from these posts were used until early 1848. By spring of 1848, Bouton's City Dispatch had completely taken over all of Bouton's operations and issued its own stamps under the new name.



RED BOUTON'S CITY DISPATCH POST OVAL HANDSTAMP  
DECEMBER 14, 1847

The cover above is addressed to John D. Wendel, a furrier at 11 Gold St. in New York. It was sent with a red Bouton's City Dispatch Post oval handstamp. The cover is docketed with the date December 14, 1847. This is an example of an early Bouton's City Dispatch cover, before stamps for the post were issued.



# BOUTON'S CITY DISPATCH POST

The cover below was mailed in October of 1848. It is marked with a red Bouton's City Dispatch Post handstamp, and manuscript "paid".



RED BOUTON'S CITY DISPATCH POST OVAL HANDSTAMP  
OCTOBER 28, 1848

This cover is addressed to Andrew Haswell Green at 11 Pine Street. In 1848, Green was working as a lawyer at this location, while also leading the Central Park Commission. Green would later be elected as New York City Comptroller.

Green's planning is responsible for the creation of Central Park, the New York Public Library, and the and the Metropolitan Museum of Art, among other projects. He is sometimes considered "the Father of Greater New York"



# BOUTON'S CITY DISPATCH POST

The "Rough and Ready" stamp design by Bouton features a bust of Zachary Taylor, 12th President of the United States (elected in 1848). Two variations of the stamp exist, type I (18L1) features leaf designs in the corners, while type II (18L2) features dots in the corners. The type II stamp continued use after the post was bought by Swarts in 1849. Swarts marked the stamps with his name until the design could be changed.



18L2 : 2¢ BLACK : TYPE II  
GENUINE USE ON COVER  
RED BOUTON'S "PAID" HANDSTAMP CANCEL  
MAILED WITH  
RED NEW YORK 5CTS DECEMBER 29 CDS

The cover above was delivered to the mails by Bouton's City Dispatch, paid with a type II "Rough and Ready" stamp. It was then carried out of state by the US Post Office to Philadelphia, Pennsylvania, using the red New York "5 cts" handstamp.



# BOUTON'S CITY DISPATCH POST

Type I "Rough and Ready" stamps were reprinted twice as counterfeits. The first of these reprints, by George Hussey, can be identified by flaws in the seven transfer types.



FIRST REPRINT  
HUSSEY  
2c BLACK  
TYPE I  
(18L1)  
TRANSFER 1



FIRST REPRINT  
HUSSEY  
2c BLACK  
TYPE I  
(18L1)  
TRANSFER 2



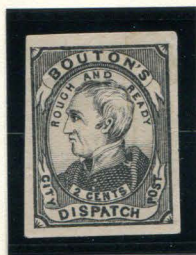
FIRST REPRINT  
HUSSEY  
2c BLACK  
TYPE I  
(18L1)  
TRANSFER 3



FIRST REPRINT  
HUSSEY  
2c BLACK  
TYPE I  
(18L1)  
TRANSFER 4



FIRST REPRINT  
HUSSEY  
2c BLACK  
TYPE I  
(18L1)  
TRANSFER 5



FIRST REPRINT  
HUSSEY  
2c BLACK  
TYPE I  
(18L1)  
TRANSFER 6



FIRST REPRINT  
HUSSEY  
2c BLACK  
TYPE I  
(18L1)  
TRANSFER 7

A full sheet of eighty-four reprint stamps is included on the following page. Each row of twelve represents a different transfer type, starting with 1 at the top, and 7 at the bottom.



COPY OF REPRINT—SEE FOLLOWING PAGE







# BOUTON'S CITY DISPATCH POST



2<sup>ND</sup> REPRINT  
TYPE I  
2c BLACK - THICK PAPER  
(18L1)



2<sup>ND</sup> REPRINT  
TYPE I  
2c BLACK - THIN PAPER  
(18L1)



2<sup>ND</sup> REPRINT  
TYPE I  
2c GRAY  
(18L1)



2<sup>ND</sup> REPRINT  
TYPE I  
2c BLUE  
(18L1)



2<sup>ND</sup> REPRINT  
TYPE I  
2c RED  
(18L1)



2<sup>ND</sup> REPRINT  
TYPE I  
2c DULL GREEN  
(18L1)



2<sup>ND</sup> REPRINT  
TYPE I  
2c RED - DOUBLE TRANSFER  
(18L1)



2<sup>ND</sup> REPRINT  
TYPE I  
2c BLACK ON WHITE  
FAKE "PAID" CANCEL  
(18L1)



2<sup>ND</sup> REPRINT  
TYPE I  
2c BLACK ON GREEN  
FAKE "PAID" CANCEL  
(18L1)



# BOUTON'S CITY DISPATCH POST



MODERN REPRINT  
TYPE I  
2c BLACK  
(18L1)



FORGERY A  
SCOTT  
2c BLACK  
ON THIN WHITE  
TYPE I  
(18L1)



FORGERY A  
SCOTT  
2c BLACK  
ON THIN CREAM  
TYPE I  
(18L1)



FORGERY A  
SCOTT  
2c BLACK  
ON THICK WHITE  
TYPE I  
(18L1)



FORGERY A  
SCOTT  
2c BLACK  
ON GREEN SC  
TYPE I  
(18L1)



FORGERY B  
STIRLING  
2c BLACK  
ON DARK GREEN  
TYPE I  
(18L1)



FORGERY B  
STIRLING  
2c BLACK  
ON PALE BLUE GREEN  
TYPE I  
(18L1)



FORGERY B  
STIRLING  
2c BLACK  
ON PEACH  
TYPE I  
(18L1)



# BOUTON'S CITY DISPATCH POST



FORGERY A  
SCOTT  
2¢ BLACK  
ON THIN WHITE  
TYPE II  
(18L2)



FORGERY A  
SCOTT  
2¢ BLACK  
ON THICK CREAM  
TYPE II  
(18L2)



FORGERY A  
SCOTT  
2¢ RED  
ON THICK CREAM  
TYPE II  
(18L2)



FORGERY A  
SCOTT  
2¢ BLACK ON THIN WHITE  
TYPE II - (18L2)  
SHEET OF TWENTY



# BOUTON'S CITY DISPATCH POST



FORGERY B  
2¢ BLACK  
ON YELLOWISH WHITE  
TYPE II  
(18L2)



FORGERY B  
2¢ BLACK  
ON BUFF  
TYPE II  
(18L2)



FORGERY B  
2¢ BLACK ON YELLOWISH WHITE  
TYPE II  
(18L2)



# BOUTON'S CITY DISPATCH POST



FORGERY C  
2¢ BLACK  
ON THICKER WHITE  
TYPE II  
(18L2)



FORGERY C  
2¢ BLACK  
ON THIN WHITE  
TYPE II  
(18L2)



FORGERY D  
2¢ BLACK  
ON YELLOWISH WHITE  
TYPE II  
(18L2)



FORGERY D  
2¢ BLACK  
ON WHITE  
TYPE II  
(18L2)



FORGERY E  
2¢ INTENSE BLACK  
ON WHITE  
TYPE II  
(18L2)



FORGERY E  
2¢ BLACK  
ON PALE GRAY BLUE  
TYPE II  
(18L2)



FORGERY E  
2¢ GRAYISH BLACK  
ON WHITE  
TYPE II  
(18L2)



FORGERY F  
2¢ ORANGE  
ON WHITE  
TYPE II  
(18L2)



# BOUTON'S CITY DISPATCH POST

The stamp attached to the cover below is a forgery. The stamp appears to be tied by a red "PAID BOUTON." handstamp. It is unknown for certain whether this cover was mailed with the forgery passing as a genuine payment; or if the forged stamp was applied afterward with a fake cancel.

The red "Bouton's City Dispatch Post" oval handstamp appears to be genuine. Docketing on the cover dates it around November, 1848.



FORGERY B : TYPE II (18L2)  
2¢ BLACK ON WHITE - RED "PAID BOUTON" CANCEL  
MAILED WITH  
RED "BOUTON'S CITY DISPATCH POST" OVAL HANDSTAMP

This cover was purchased in a Siegel Auction (sale 889, lot 2051), listed as genuine.



# BOUTON'S CITY DISPATCH POST

The following enlarged type 1 look-alikes are unlisted.



MODERN FORGERY  
2¢ BLACK  
ON WHITE  
(18L1)



MODERN FORGERY  
2¢ DARK GREEN  
ON WHITE  
(18L1)



MODERN FORGERY  
2¢ GREEN  
ON WHITE  
(18L1)



MODERN FORGERY  
2¢ LIGHT GREEN  
ON WHITE  
(18L1)



MODERN FORGERY  
2¢ YELLOW  
ON WHITE  
(18L1)



MODERN FORGERY  
2¢ ORANGE  
ON WHITE  
(18L1)



MODERN FORGERY  
2¢ RED  
ON WHITE  
(18L1)



MODERN FORGERY  
2¢ VIOLET RED  
ON WHITE  
(18L1)



MODERN FORGERY  
2¢ PURPLE  
ON WHITE  
(18L1)



MODERN FORGERY  
2¢ BLUE  
ON WHITE  
(18L1)



MODERN FORGERY  
2¢ BLACK  
ON GOLD SC  
(18L1)



# BOUTON'S CITY DISPATCH POST



MODERN FORGERY  
2¢ BLACK  
ON BUFF  
(18L1)



MODERN FORGERY  
2¢ BLACK  
ON YELLOW  
(18L1)



MODERN FORGERY  
2¢ BLACK  
ON PINK MESH  
(18L1)



MODERN FORGERY  
2¢ VIOLET RED  
ON YELLOW  
(18L1)



MODERN FORGERY  
2¢ RED  
ON CREAM  
(18L1)



MODERN FORGERY  
2¢ RED  
ON PINK  
(18L1)



MODERN FORGERY  
2¢ RED  
ON BLUE  
(18L1)



MODERN FORGERY  
2¢ BLACK  
ON BLUE RULED  
(18L1)



MODERN FORGERY  
2¢ BLACK  
ON SALMON WAVED  
(18L1)



MODERN FORGERY  
2¢ GREEN  
ON YELLOW WAVED  
(18L1)



# BOUTON'S CITY DISPATCH POST



MODERN FORGERY  
2¢ RED  
ON WHITE  
TETE-BECHE  
BLOCK OF FOUR  
(18L1)



MODERN FORGERY  
2¢ YELLOW  
ON WHITE  
BLOCK OF FOUR  
(18L1)



MODERN FORGERY  
2¢ BLUE  
ON WHITE  
BLOCK OF TWO &  
TWO PARTIALS  
(18L1)