

THE
MIKE FARRELL
COLLECTION
OF INDEPENDENT MAILS

INCLUDING THE HISTORY, FORGERIES, & FANTASIES OF
UNITED STATES, LOCAL POSTS, CARRIERS,
INDEPENDENT MAIL ROUTES, & EXPRESS CO.S

BOWERY POST OFFICE

The information and identification within these selections is the individual work of the Farrell Collection. It is always recommended to consult multiple sources for additional information or opinions. Local post company descriptions are based on information available at the time of writing. Descriptions in the Farrell Collection were written based on personal research and sources including, but not limited to: Articles in the Carriers and Locals Society's The Penny Post; Amos Media's Scott Catalogue; Patton's The Private Local Post of the United States; Springer's Handbook of North American Cinderella Stamps; Lyons' Identifier for Carriers, Locals, Fakes Forgeries and Bogus Posts of the United States; articles in the USPS's The Chronicle; Mosher's Catalog of Private Express Labels and Stamps; The Eastern Independent Mail Company Study Group's Eastern Independent Mail Companies and Express Mail Companies 1840-1845; Elliot Perry's Pat Paragraphs; James N. Drummond's Catalog of Philatelic Miscellany; and the notes of George Sloane and Gordon Stimmell.

Colors listed for stamps and forgeries are the opinions of the Farrell Collection based on viewing physical copies of the pieces under consistent lighting. Colors in the .pdfs may be slightly inaccurate due to manipulations from the scanning process, computer monitor settings, or (in event that the files are printed for offline viewing) the printing process.

Unless otherwise noted, stamps are identified by their Scott Catalogue numbers and forgeries are identified by their Lyons Identifier type. Scott numbers in parenthesis under listed forgeries represent approximately what stamp the forgery is attempting to imitate.

Copyright Amos Media Company - 2018

The Scott Numbers are the copyrighted property of Amos Media Company, and are used here under a licensing agreement with Amos. The marks Scott and Scott's are Registered in the U.S. Patent and Trademark Office, and are trademarks of Amos Media Company. No use may be made of these marks or of material in this publication, which is reprinted from a copyrighted publication of Amos Media Company., without the express written permission of Amos Media Company, Sidney, Ohio 45365.

BOWERY POST OFFICE

This New York City post is believed to have been a genuine post, although no authentic stamps nor handstamps for this post are known to exist. It was supposedly operated by Abraham Van Winkle from around 1850 to 1852.

S. A. Taylor created two bogus stamps for this post in a wide variety of colors. The second bogus is differentiated from the first by the gridded background behind the flower ornaments on the left and right sides.



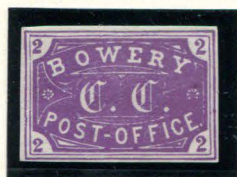
BOGUS 1
TAYLOR - FORM 7
2c BISTRE BROWN
ON WHITE



BOGUS 1
TAYLOR - FORM 7
2c BROWN
ON GRAY BROWN SC



BOGUS 1
TAYLOR - FORM 7
2c BROWN
ON ORANGE SC



BOGUS 1
TAYLOR - FORM 8
2c PURPLE
ON WHITE



BOGUS 1
TAYLOR - FORM 8
2c YELLOW
ON WHITE



BOGUS 1
TAYLOR - FORM 8
2c PURPLE
ON YELLOW



BOGUS 1
TAYLOR - FORM 10
2c BLACK
ON BRIGHT NAVY BLUE

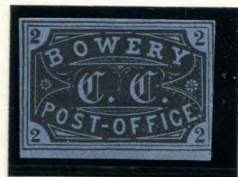


BOGUS 1
TAYLOR - FORM 10
2c BLACK
ON PALE GREEN V LAID

BOWERY POST OFFICE



BOGUS 1
TAYLOR - FORM 15
2c BLACK
ON ORANGE BUFF



BOGUS 1
TAYLOR - FORM 15
2c BLACK
ON VIOLET BLUE



BOGUS 1
TAYLOR - FORM 15
2c ULTRAMARINE
ON WHITE H LAID



BOGUS 1
TAYLOR - FORM 15
2c ULTRAMARINE
ON WHITE V LAID



BOGUS 1
TAYLOR - FORM AA1
2c DULL BLUE
ON WHITE



BOGUS 1
TAYLOR - FORM AA1
2c DULL GREEN
ON WHITE



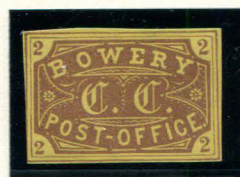
BOGUS 1
TAYLOR - FORM AA1
2c DULL RED
ON WHITE



BOGUS 1
TAYLOR - FORM AA1
2c RED
ON WHITE



BOGUS 1
TAYLOR - FORM AA1
2c MAROON
ON WHITE



BOGUS 1
TAYLOR - FORM AA10
2c BROWN
ON YELLOW



BOGUS 1
TAYLOR - FORM AA10
2c BROWN
ON WHITE



BOGUS 1
TAYLOR - FORM AA20
2c BLACK
ON BLUE GRAY



BOGUS 1
TAYLOR - FORM AA20
2c BLACK
ON PINKISH



BOGUS 1
TAYLOR - FORM AA20
2c BLACK
ON PALE PINK V LAID

BOWERY POST OFFICE



BOGUS 1
TAYLOR
2c DARK BLUE
ON WHITE



BOGUS 1
TAYLOR
2c BLUE
ON WHITE



BOGUS 1
TAYLOR
2c VIOLET BLUE
ON WHITE



BOGUS 1
TAYLOR
2c BLUE GRAY
ON WHITE



BOGUS 1
TAYLOR
2c RED VIOLET
ON WHITE



BOGUS 1
TAYLOR
2c RED
ON WHITE



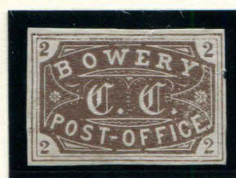
BOGUS 1
TAYLOR
2c PINK
ON WHITE



BOGUS 1
TAYLOR
2c YELLOW
ON WHITE



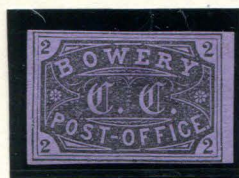
BOGUS 1
TAYLOR
2c ORANGE
ON WHITE



BOGUS 1
TAYLOR
2c DARK BROWN
ON WHITE



BOGUS 1
TAYLOR
2c VIOLET
ON WHITE



BOGUS 1
TAYLOR
2c BLACK
ON VIOLET



BOGUS 1
TAYLOR
2c BLACK
ON LIGHT BLUE



BOGUS 1
TAYLOR
2c BLUE
ON LIGHT BLUE VIOLET



BOGUS 1
TAYLOR
2c BLUE
ON YELLOW

BOWERY POST OFFICE



BOGUS 2
TAYLOR - FORM B3
2¢ RED
ON SALMON



BOGUS 2
TAYLOR - FORM B3
2¢ RED
ON BRIGHT BLUE



BOGUS 2
TAYLOR - FORM BB2
2¢ RED VIOLET
ON YELLOW



BOGUS 2
TAYLOR - FORM BB2
2¢ VIOLET
ON LIGHT BLUE



BOGUS 2
TAYLOR - FORM BB3
2¢ DULL PURPLE
ON YELLOWISH



BOGUS 2
TAYLOR - FORM BB3
2¢ PURPLE
ON WHITE



BOGUS 2
TAYLOR
2¢ BLACK
ON LIGHT BLUE VIOLET



BOGUS 2
TAYLOR
2¢ GREEN
ON BUFF



BOGUS 2
TAYLOR
2¢ BLUE GREEN
ON YELLOWISH



BOGUS 2
TAYLOR
2¢ BLUE GREEN
ON CREAM



BOGUS 2
TAYLOR
2¢ BLUE
ON PALE PINK



BOGUS 2
TAYLOR
2¢ BLUE VIOLET
ON PINK



BOGUS 2
TAYLOR
2¢ VIOLET
ON PALE PINK