

THE  
MIKE FARRELL  
❧ COLLECTION ❧  
OF INDEPENDENT MAILS

INCLUDING THE HISTORY, FORGERIES, & FANTASIES OF  
UNITED STATES, LOCAL POSTS, CARRIERS,  
INDEPENDENT MAIL ROUTES, & EXPRESS CO.S

BOYCE'S CITY EXPRESS POST

The information and identification within these selections is the individual work of the Farrell Collection. It is always recommended to consult multiple sources for additional information or opinions. Local post company descriptions are based on information available at the time of writing. Descriptions in the Farrell Collection were written based on personal research and sources including, but not limited to: Articles in the Carriers and Locals Society's The Penny Post; Amos Media's Scott Catalogue; Patton's The Private Local Post of the United States; Springer's Handbook of North American Cinderella Stamps; Lyons' Identifier for Carriers, Locals, Fakes Forgeries and Bogus Posts of the United States; articles in the USPS's The Chronicle; Mosher's Catalog of Private Express Labels and Stamps; The Eastern Independent Mail Company Study Group's Eastern Independent Mail Companies and Express Mail Companies 1840-1845; Elliot Perry's Pat Paragraphs; James N. Drummond's Catalog of Philatelic Miscellany; and the notes of George Sloane and Gordon Stimmell.

Colors listed for stamps and forgeries are the opinions of the Farrell Collection based on viewing physical copies of the pieces under consistent lighting. Colors in the .pdfs may be slightly inaccurate due to manipulations from the scanning process, computer monitor settings, or (in event that the files are printed for offline viewing) the printing process.

Unless otherwise noted, stamps are identified by their Scott Catalogue numbers and forgeries are identified by their Lyons Identifier type. Scott numbers in parenthesis under listed forgeries represent approximately what stamp the forgery is attempting to imitate.

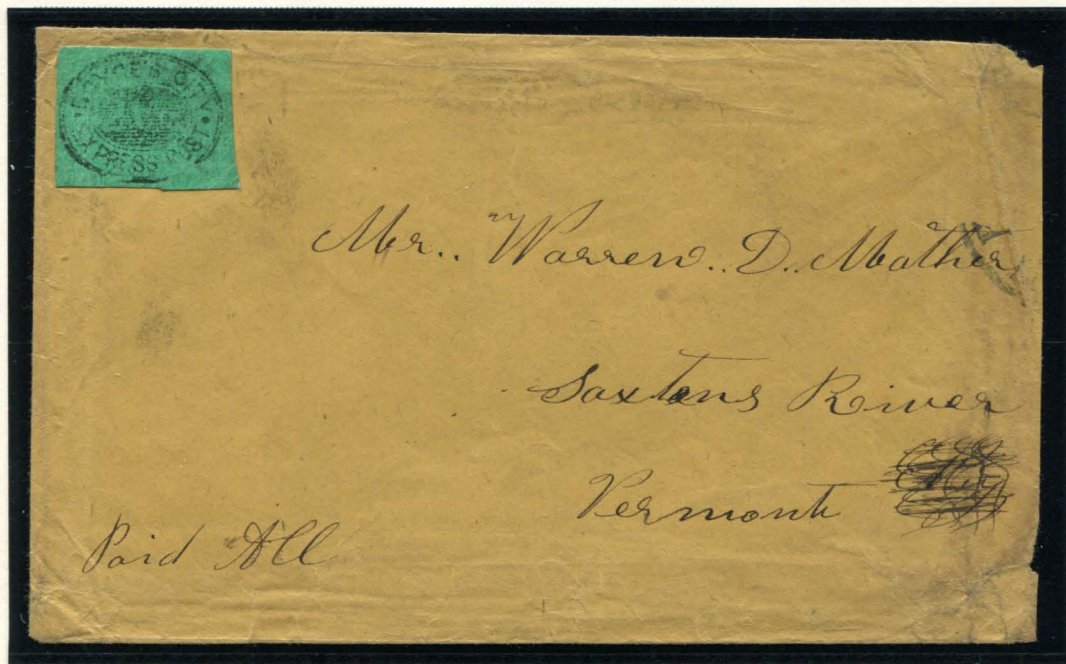
Copyright Amos Media Company - 2018

The Scott Numbers are the copyrighted property of Amos Media Company, and are used here under a licensing agreement with Amos. The marks Scott and Scott's are Registered in the U.S. Patent and Trademark Office, and are trademarks of Amos Media Company. No use may be made of these marks or of material in this publication, which is reprinted from a copyrighted publication of Amos Media Company., without the express written permission of Amos Media Company, Sidney, Ohio 45365.



# BOYCE'S CITY EXPRESS POST

Little information is known about this New York City post that operated sometime between 1852 and 1855. They only issued one stamp, a black oval with text on green glazed paper. Originals are very rare.



19L1  
2¢ BLACK ON GREEN  
USED ON COVER - UNCANCELLED  
PF CERT #0345587

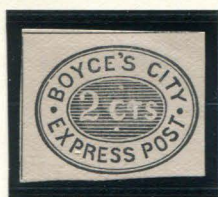
The cover above is believed to be a genuine usage of a Boyce's City Express Post stamp. The cover is marked "Paid All" in manuscript on the lower left corner. It appears to be in the same hand as the address.

The top of the New York circular datestamp at right is abruptly cut off, implying that a US postage stamp was previously affixed and tied on the upper right of the cover. The cover was probably carried by Boyce's City Express Post to the Post Office, then carried by the government to Vermont.



# BOYCE'S CITY EXPRESS POST

Several forgeries exist of the "Boyce's City Express Post" stamp, made by forgers like J. W. Scott, J. B. Moens, and S. A. Taylor. While the first two men stayed closer to the actual colors of the original stamp, Taylor used a variety of colors and even made two different designs.



FORGERY A  
SCOTT - ALBUM CUT  
2¢ BLACK  
ON WHITE  
(19L1)



FORGERY A  
SCOTT  
2¢ BLACK  
ON GREEN (SHADE) SC  
(19L1)



FORGERY A  
SCOTT  
2¢ BLACK  
ON GREEN SC  
(19L1)



FORGERY C  
2¢ BLACK  
ON GREEN (SHADE) SC  
STRIP OF THREE  
(19L1)



FORGERY B  
MOENS  
2¢ BLACK  
ON GREEN SC  
(19L1)



FORGERY C  
2¢ BLACK  
ON GREEN (SHADE) SC  
(19L1)



FORGERY C  
2¢ BLACK  
ON GREEN (SHADE) SC  
(19L1)



FORGERY D  
TAYLOR - FORM 9  
2¢ BLACK  
ON WHITE  
(19L1)



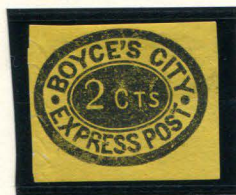
FORGERY D  
TAYLOR - FORM 9  
2¢ BLACK  
ON PINK SC  
(19L1)



FORGERY D  
TAYLOR - FORM 9  
2¢ BLACK  
ON SCARLET SC  
(19L1)



FORGERY D  
TAYLOR - FORM 13  
2¢ BLACK  
ON SCARLET SC  
(19L1)



FORGERY D  
TAYLOR - FORM 13  
2¢ BLACK  
ON YELLOW SC  
(19L1)



FORGERY D  
TAYLOR - FORM 13  
2¢ BLACK  
ON GREEN SC  
(19L1)



FORGERY D  
TAYLOR - FORM 13  
2¢ BLACK  
ON VERMILION SC  
(19L1)



# BOYCE'S CITY EXPRESS POST



FORGERY D  
TAYLOR - FORM AA6  
2¢ BLACK  
ON VERMILION SC  
(19L1)



FORGERY D  
TAYLOR - FORM AA6  
2¢ BLACK  
ON ORANGE SC  
(19L1)



FORGERY D  
TAYLOR - FORM AA6  
2¢ BLACK  
ON LIGHT YELLOW SC  
(19L1)



FORGERY D  
TAYLOR - FORM AA6  
2¢ BLACK  
ON GREEN SC  
(19L1)



FORGERY D  
TAYLOR - FORM AA6  
2¢ BLACK  
ON LIGHT BLUE SC  
(19L1)



FORGERY D  
TAYLOR - FORM AA6  
2¢ BLACK  
ON BLUE SC  
(19L1)



FORGERY D  
TAYLOR - FORM AA6  
2¢ BLACK  
ON VIOLET PINK  
(19L1)



FORGERY D  
TAYLOR - FORM AA7  
2¢ BLACK  
ON BRONZE SC  
(19L1)



FORGERY D  
TAYLOR - FORM AA7  
2¢ BLACK  
ON TEAL SC  
(19L1)



FORGERY D  
TAYLOR - FORM AA7  
2¢ BLACK  
ON YELLOW SC  
(19L1)



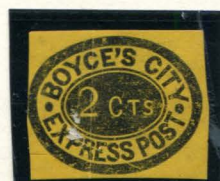
FORGERY D  
TAYLOR - FORM AA7  
2¢ BLACK  
ON VERMILION SC  
(19L1)



FORGERY D  
TAYLOR - FORM AA10  
2¢ BROWN  
ON YELLOW  
(19L1)



FORGERY D  
TAYLOR - FORM AA10  
2¢ BROWN  
ON WHITE  
(19L1)



FORGERY D  
TAYLOR - FORM AA24  
2¢ BLACK  
ON GOLD YELLOW SC  
(19L1)



FORGERY D  
TAYLOR - FORM AA24  
2¢ BLACK  
ON GREEN SC  
(19L1)



# BOYCE'S CITY EXPRESS POST



FORGERY D  
TAYLOR - FORM S20  
2¢ BLACK  
ON GRAY GREEN  
(19L1)



FORGERY D  
TAYLOR - FORM S20  
2¢ BLACK  
ON WHITE  
(19L1)



FORGERY D  
TAYLOR - FORM S20  
2¢ BLACK  
ON OFF-WHITE  
(19L1)



FORGERY D  
TAYLOR - FORM S20  
2¢ BLACK  
ON SKY BLUE SC  
(19L1)



FORGERY D  
TAYLOR - FORM S20  
2¢ BLACK  
ON PALE PINK SC  
(19L1)



FORGERY D  
TAYLOR - FORM S20  
2¢ BLACK  
ON LIGHT YELLOW SC  
(19L1)



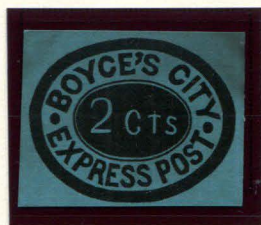
FORGERY D  
TAYLOR - FORM S20  
2¢ BLACK  
ON PALE YELLOW SC  
(19L1)



FORGERY D  
TAYLOR - FORM S20  
2¢ BLACK  
ON VERMILION SC  
(19L1)



FORGERY D  
TAYLOR - FORM S20  
2¢ BLACK  
ON GREEN SC  
(19L1)



FORGERY D - ENLARGED  
MODERN REPRINT/COPY  
2¢ BLACK  
ON BLUE-GREEN SC  
(19L1)



# BOYCE'S CITY EXPRESS POST



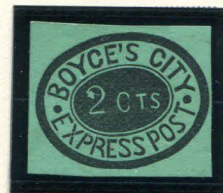
FORGERY E  
TAYLOR - FORM AB17  
2¢ BLACK  
ON ORANGE SC  
(19L1)



FORGERY E  
TAYLOR - FORM AB17  
2¢ BLACK  
ON BRIGHT GREEN SC  
(19L1)



FORGERY E  
TAYLOR - FORM AB18  
2¢ BLACK  
ON BRIGHT GREEN SC  
(19L1)



FORGERY E  
TAYLOR - FORM AB18  
2¢ BLACK  
ON GREEN SC  
(19L1)



FORGERY E  
TAYLOR - FORM AB18  
2¢ BLACK  
ON WHITE  
(19L1)



FORGERY E  
TAYLOR - FORM AB18  
2¢ BLACK  
ON OFF-WHITE  
(19L1)



FORGERY E  
TAYLOR  
2¢ BLACK  
ON GRAY VIOLET  
(19L1)