

THE
MIKE FARRELL
❧ COLLECTION ❧
OF INDEPENDENT MAILS

INCLUDING THE HISTORY, FORGERIES, & FANTASIES OF
UNITED STATES, LOCAL POSTS, CARRIERS,
INDEPENDENT MAIL ROUTES, & EXPRESS CO.S

BRONSON & FORBES' CITY EXPRESS POST

The information and identification within these selections is the individual work of the Farrell Collection. It is always recommended to consult multiple sources for additional information or opinions. Local post company descriptions are based on information available at the time of writing. Descriptions in the Farrell Collection were written based on personal research and sources including, but not limited to: Articles in the Carriers and Locals Society's The Penny Post; Amos Media's Scott Catalogue; Patton's The Private Local Post of the United States; Springer's Handbook of North American Cinderella Stamps; Lyons' Identifier for Carriers, Locals, Fakes Forgeries and Bogus Posts of the United States; articles in the USPS's The Chronicle; Mosher's Catalog of Private Express Labels and Stamps; The Eastern Independent Mail Company Study Group's Eastern Independent Mail Companies and Express Mail Companies 1840-1845; Elliot Perry's Pat Paragraphs; James N. Drummond's Catalog of Philatelic Miscellany; and the notes of George Sloane and Gordon Stimmell.

Colors listed for stamps and forgeries are the opinions of the Farrell Collection based on viewing physical copies of the pieces under consistent lighting. Colors in the .pdfs may be slightly inaccurate due to manipulations from the scanning process, computer monitor settings, or (in event that the files are printed for offline viewing) the printing process.

Unless otherwise noted, stamps are identified by their Scott Catalogue numbers and forgeries are identified by their Lyons Identifier type. Scott numbers in parenthesis under listed forgeries represent approximately what stamp the forgery is attempting to imitate.

Copyright Amos Media Company - 2018

The Scott Numbers are the copyrighted property of Amos Media Company, and are used here under a licensing agreement with Amos. The marks Scott and Scott's are Registered in the U.S. Patent and Trademark Office, and are trademarks of Amos Media Company. No use may be made of these marks or of material in this publication, which is reprinted from a copyrighted publication of Amos Media Company, without the express written permission of Amos Media Company, Sidney, Ohio 45365.

BRONSON & FORBES' CITY EXPRESS POST

This Chicago post was operated by W. H. Bronson and G. F. Forbes between 1855 to 1857. Little is known about this post, and originals of its stamp are scarce.



27L1
GENUINE
BLACK
ON GREEN



27L1
GENUINE
BLACK
ON GREEN



27L1
GENUINE
BLACK
ON GREEN
WITH MS DOCKETING
PF CERT #536832



27L1
GENUINE
BLACK
ON GREEN
WITH HANDSTAMP

The example at left is cancelled with a "Bronson & Forbes' City Express" handstamp. It is one of only three or four examples of this stamp with a cancellation, as most covers were mailed uncanceled.

BRONSON & FORBES' CITY EXPRESS POST

Most forgeries of the "Bronson & Forbes' City Express Post" stamps can easily be identified as being fake stamps by the lack of an apostrophe behind "FORBES".

J. W. Scott created his counterfeits based on the illustrations published in his stamp albums.



FORGERY A
SCOTT - ALBUM CUT (1886)
BLACK
ON WHITE
(27L1)



FORGERY A
SCOTT - ALBUM CUT (1888)
BLACK
ON WHITE
(27L1)



FORGERY A
SCOTT
BLACK
ON GREEN SC
(27L1)

The forgeries created by S. Allan Taylor are available in a wide range of colors, and some copies even come with a fancy overprint.



FORGERY B
TAYLOR - FORM 7
BISTRE BROWN
ON WHITE
(27L1)



FORGERY B
TAYLOR - FORM 7
BROWN
ON ORANGE SC
(27L1)



FORGERY B
TAYLOR - FORM 7
BROWN
ON GRAY BROWN SC
(27L1)



FORGERY B
TAYLOR - FORM 21
VIOLET
ON BLUE
(27L1)



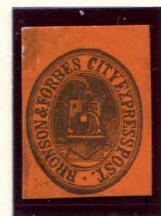
FORGERY B
TAYLOR - FORM 13
BLACK
ON SCARLET SC
(27L1)



FORGERY B
TAYLOR - FORM 13
BLACK
ON YELLOW SC
(27L1)



FORGERY B
TAYLOR - FORM 19
BLACK
ON GREEN SC
(27L1)



FORGERY B
TAYLOR - FORM 19
BLACK
ON VERMILION SC
(27L1)

BRONSON & FORBES'

CITY EXPRESS POST



FORGERY B
TAYLOR - FORM AA5
BLACK
ON SALMON SC H RIBBED
W/ GOLD DIAMOND GRID
OVERPRINT
(27L1)



FORGERY B
TAYLOR - FORM AA5
BLACK
ON WHITE
W/ BROWN QUILTED PATTERN
OVERPRINT
(27L1)



FORGERY B
TAYLOR - FORM AA5
BLACK
ON LAVENDER SC
(27L1)



FORGERY B
TAYLOR - FORM AA5
BLACK
ON PURPLE SC
(27L1)



FORGERY B
TAYLOR - FORM AA7
BLACK
ON BRONZE SC
(27L1)



FORGERY B
TAYLOR - FORM AA7
BLACK
ON TEAL SC
(27L1)



FORGERY B
TAYLOR - FORM AA7
BLACK
ON VERMILION SC
(27L1)



FORGERY B
TAYLOR - FORM AB2
BLACK
ON YELLOW
(27L1)



FORGERY B
TAYLOR - FORM AB2
BLACK
ON PINK
(27L1)



FORGERY B
TAYLOR - FORM AB2
BLACK
ON PALE PINK
(27L1)



FORGERY B
TAYLOR - FORM AB2
BLACK
ON LILAC
(27L1)



FORGERY B
TAYLOR - FORM AB2
BLACK
ON BLUE
(27L1)



FORGERY B
TAYLOR - FORM AB2
BLACK
ON GREENISH
(27L1)

BRONSON & FORBES' CITY EXPRESS POST



FORGERY B
TAYLOR - FORM AB13
BLACK
ON DULL ORANGE SC
(27L1)



FORGERY B
TAYLOR - FORM AB13
BLACK
ON PINK VIOLET SC
(27L1)



FORGERY B
TAYLOR - FORM AB13
BLACK
ON PALE BLUE SC
(27L1)



FORGERY B
TAYLOR - FORM S17
RED VIOLET
ON CREAM
(27L1)



FORGERY B
TAYLOR - FORM S17
LIGHT RED VIOLET
ON CREAM
(27L1)



FORGERY B
TAYLOR - FORM S17
RED VIOLET
ON LIGHT VIOLET
(27L1)



FORGERY B
TAYLOR - FORM S17
RED VIOLET
ON BLUE GRAY
(27L1)

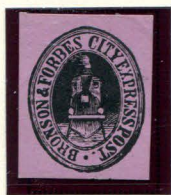


FORGERY B
TAYLOR
BLACK
ON GRAY
(27L1)



FORGERY B
TAYLOR
BLACK
ON VERMILION SC
(BUFF BACK)
(27L1)

It is unknown who made the following forgery, which sometimes appear on envelopes or letters, tied with fake handstamps.



FORGERY C
BLACK
ON PINK VIOLET SC
(27L1)



FORGERY C
BLACK
ON PINK VIOLET SC
ON PIECE WITH
FAKE HANDSTAMP
(27L1)



FORGERY C
BLACK
ON GREEN SC
ON PIECE WITH
FAKE HANDSTAMP
(27L1)