

THE  
MIKE FARRELL  
❧ COLLECTION ❧  
OF INDEPENDENT MAILS

INCLUDING THE HISTORY, FORGERIES, & FANTASIES OF  
UNITED STATES, LOCAL POSTS, CARRIERS,  
INDEPENDENT MAIL ROUTES, & EXPRESS CO.S

BROWNE & CO.'S CITY POST

The information and identification within these selections is the individual work of the Farrell Collection. It is always recommended to consult multiple sources for additional information or opinions. Local post company descriptions are based on information available at the time of writing. Descriptions in the Farrell Collection were written based on personal research and sources including, but not limited to: Articles in the Carriers and Locals Society's The Penny Post; Amos Media's Scott Catalogue; Patton's The Private Local Post of the United States; Springer's Handbook of North American Cinderella Stamps; Lyons' Identifier for Carriers, Locals, Fakes Forgeries and Bogus Posts of the United States; articles in the USPS's The Chronicle; Mosher's Catalog of Private Express Labels and Stamps; The Eastern Independent Mail Company Study Group's Eastern Independent Mail Companies and Express Mail Companies 1840-1845; Elliot Perry's Pat Paragraphs; James N. Drummond's Catalog of Philatelic Miscellany; and the notes of George Sloane and Gordon Stimmell.

Colors listed for stamps and forgeries are the opinions of the Farrell Collection based on viewing physical copies of the pieces under consistent lighting. Colors in the .pdfs may be slightly inaccurate due to manipulations from the scanning process, computer monitor settings, or (in event that the files are printed for offline viewing) the printing process.

Unless otherwise noted, stamps are identified by their Scott Catalogue numbers and forgeries are identified by their Lyons Identifier type. Scott numbers in parenthesis under listed forgeries represent approximately what stamp the forgery is attempting to imitate.

Copyright Amos Media Company - 2018

The Scott Numbers are the copyrighted property of Amos Media Company, and are used here under a licensing agreement with Amos. The marks Scott and Scott's are Registered in the U.S. Patent and Trademark Office, and are trademarks of Amos Media Company. No use may be made of these marks or of material in this publication, which is reprinted from a copyrighted publication of Amos Media Company., without the express written permission of Amos Media Company, Sidney, Ohio 45365.



# BROWNE & CO.'S CITY POST

This Cincinnati post office was established in 1852 by John W. S. Browne. It delivered mail to and from the official post office. As far as is known, the city of Cincinnati did not declare post roads after the Postal Act of March 1851, which allowed this post to run unthreatened by government regulations.

The cover below was delivered to the Cincinnati post office by Browne & Co., paid with a red circular handstamp. From Cincinnati, the cover was delivered to Crittenden, Kentucky by the US Post Office, prepaid by the 3¢ Nesbit envelope.



BROWNE & CO.'S CITY POST "PAID" HANDSTAMP  
- MAILED ON NESBIT ENVELOPE -  
U2 : 3¢ RED ON BUFF  
CANCELLED WITH BLUE CINCINNATI, OHIO CDS  
JULY 19, (CIRCA 1853)



This cover is on a first issue Nesbit envelope. When George F. Nesbit & Co. were contracted to print the first US postal stationery, they included a small, circular advertising imprint on the reverse of the envelopes. This was frowned upon by the US government, and the Post Office Department ordered them to remove the imprint from future printings.

PHOTOCOPY OF ENVELOPE REVERSE  
SHOWING "G.F. NESBIT N.Y." IMPRINT  
ON ENVELOPE TONGUE FLAP



# BROWNE & CO.'S CITY POST

The first, 1¢ stamps produced by Browne & Co.'s City Post featured a misspelling of the name as "Brown". This was corrected in the post's second, 2¢ stamp.



29L1 : GENUINE  
1¢ BLACK ON WHITE  
UNUSED



29L1 : GENUINE  
1¢ BLACK ON WHITE  
CANCELLED  
PARTIAL CINCINNATI CDS



29L2 : GENUINE  
2¢ BLACK ON WHITE  
- ON PIECE WITH -  
11A : 3¢ DULL RED  
BLUE CINCINNATI CDS

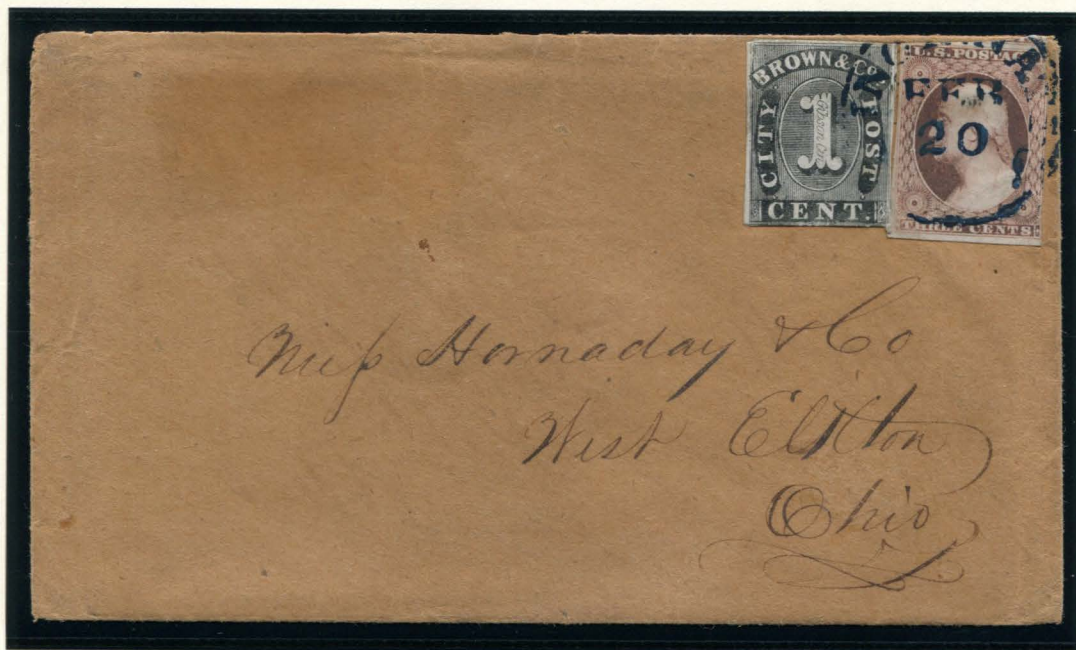
The cover below was carried to the Cincinnati post office by Browne & Co, prepaid with a 1¢ postage stamp and cancelled by a red Browne & Co.'s City Post "PAID" handstamp. From the post office it was mailed to Newport, Kentucky with a 3¢ US stamp.



29L1 : 1¢ BLACK : GENUINE  
RED "BROWNE & CO'S CITY POST PAID" CIRCULAR HANDSTAMP  
-ON COVER WITH-  
11 : 3¢ DULL RED  
BLUE CINCINNATI CDS - MARCH 26 (CIRCA 1853)



# BROWNE & CO.'S CITY POST



29L1 : 1¢ BLACK : GENUINE  
 - ON COVER WITH -  
 11A : 3¢ DULL RED  
 CANCELLED WITH BLACK CINCINNATI CDS  
 FEBRUARY 20 (CIRCA 1853)



29L1 : 1¢ BLACK : GENUINE  
 - ON COVER WITH -  
 11A : 3¢ DULL RED  
 CANCELLED WITH BLUE CINCINNATI CDS  
 AUGUST 20 (CIRCA 1853)



# BROWNE & CO.'S CITY POST

The cover below features an uncanceled Browne & Co. 2¢ stamp. This cover does not include any additional postage or postal markings to indicate it was delivered by another post or service.

The envelope features an embossed, circular imprint reading "Lipman's Adhesive Despatch Envelope" on the back flap. While there is no date on this cover, these imprints are known on envelopes from around 1851 to 1856.

This cover is addressed to Sophia Weed, care of George L. Weed. According to Williams' Cincinnati Directory, G.L. Weed ran a Sunday School and Bible Depository in 1853. In 1855, he was running a general bookstore from the same location.



29L2 : 2¢ BLACK : GENUINE  
ON COVER



PENCIL RUBBING  
OF EMBOSSED  
LIPMAN'S IMPRINT  
ON BACK FLAP



# BROWNE & CO.'S CITY POST

Browne & Co.'s City Post ended in 1854, around the time that the official Cincinnati Post Office restarted their carrier service with C. C. Williams as head letter carrier. Because a Browne & Co. hand stamp is known marked on covers delivered by Williams, it is thought that the Browne & Co. post was absorbed into the Cincinnati post.

*Mr. H. Wood Co  
ma 4/11/56*

*Cincinnati Feb 14, 1856*

*Messrs. H. Wood Co*

*Your favor of 5<sup>th</sup> was duly rec<sup>d</sup> but I put*



29L1 : 1¢ BLACK : GENUINE  
ON COVER WITH  
11A : 3¢ DULL RED  
CANCELLED WITH BLUE CINCINNATI CDS  
FEBRUARY 15, 1856

Although the 1¢ Browne & Co. stamp affixed to the cover above is genuine, it does not represent a genuine usage by the post. The cover is datelined 1856, two years after Browne & Co. was known to have closed.



# BROWNE & CO.'S CITY POST

S. Allan Taylor's forgery of the 1¢ "Browne & Co's City Post Office" stamp is the easiest one of this post's counterfeits to identify, as there is no "Gibson Cin" inside the large numeral. The stamps come in a wide range of colors, as is common with Taylor's creations.



FORGERY A  
TAYLOR - FORM 9  
1¢ BLACK  
ON WHITE  
(29L1)



FORGERY A  
TAYLOR - FORM 9  
1¢ BLACK  
ON PINK SC  
(29L1)



FORGERY A  
TAYLOR - FORM 9  
1¢ BLACK  
ON SCARLET SC  
(29L1)



FORGERY A  
TAYLOR - FORM 10  
1¢ BLACK  
ON BRIGHT NAVY BLUE SC  
(29L1)



FORGERY A  
TAYLOR - FORM 10  
1¢ BLACK  
ON PALE GREEN H LAID  
(29L1)



FORGERY A  
TAYLOR - FORM 15  
1¢ BLACK  
ON ORANGE BUFF  
(29L1)



FORGERY A  
TAYLOR - FORM 15  
1¢ BLACK  
ON VIOLET BLUE  
(29L1)



FORGERY A  
TAYLOR - FORM 15  
1¢ ULTRAMARINE  
ON WHITE H LAID  
(29L1)



FORGERY A  
TAYLOR - FORM 15  
1¢ ULTRAMARINE  
ON WHITE H LAID  
(29L1)



# BROWNE & CO.'S CITY POST



FORGERY A  
TAYLOR - FORM 17  
1¢ BLACK  
ON WHITE  
(29L1)



FORGERY A  
TAYLOR - FORM 17  
1¢ BLACK  
ON CREAM  
(29L1)



FORGERY A  
TAYLOR - FORM 17  
1¢ BLACK  
ON PINKISH CREAM  
(29L1)



FORGERY A  
TAYLOR - FORM AA4  
1¢ BLACK  
ON YELLOW SC  
(29L1)



FORGERY A  
TAYLOR - FORM AA4  
1¢ BLACK  
ON LAVENDER SC  
(29L1)



FORGERY A  
TAYLOR - FORM AA4  
1¢ BLACK  
ON LIGHT BLUE SC  
(29L1)



FORGERY A  
TAYLOR  
1¢ VIOLET  
ON WHITE  
(29L1)



FORGERY A  
TAYLOR  
1¢ LIGHT GREEN  
ON WHITE  
(29L1)



FORGERY A  
TAYLOR  
1¢ BLUE GREEN  
ON WHITE  
(29L1)



FORGERY A  
TAYLOR  
1¢ GREEN  
ON YELLOW  
(29L1)



FORGERY A  
TAYLOR  
1¢ GRAYISH BLACK  
ON WHITE  
(29L1)



FORGERY A  
TAYLOR  
1¢ GRAYISH BLACK  
ON BUFF  
(29L1)



FORGERY A  
TAYLOR  
1¢ BLACK  
ON BUFF  
(29L1)



# BROWNE & CO.'S CITY POST



FORGERY A  
TAYLOR  
1¢ BROWN VIOLET  
ON DULL YELLOW  
(29L1)



FORGERY A  
TAYLOR  
1¢ RED VIOLET  
ON FADED VIOLET  
(29L1)



FORGERY A  
TAYLOR  
1¢ RED VIOLET  
ON WHITE  
(29L1)



FORGERY A  
TAYLOR  
1¢ VIOLET  
ON WHITE  
(29L1)



FORGERY A  
TAYLOR  
1¢ RED  
ON WHITE  
(29L1)



FORGERY A  
TAYLOR  
1¢ RED ORANGE  
ON WHITE  
(29L1)



FORGERY A  
TAYLOR  
1¢ RED ORANGE  
ON OFF-WHITE  
(29L1)



FORGERY A  
TAYLOR  
1¢ ORANGE  
ON WHITE  
(29L1)

It is unclear who made the next forgery, which can be identified by the large numeral. The large one has only two round projections at the top, in stead of three.



FORGERY B  
1¢ BLACK  
ON WHITE  
(29L1)



# BROWNE & CO.'S CITY POST

Both J. B. Moens and J. W. Scott based their forgeries on the illustrations published in their stamp albums and catalogues. Moens' forgery is recognizable by the thickness of the "OS" in "COS", while Scott's counterfeits can be identified by the thin lettering and wide spacing of "BROWN".



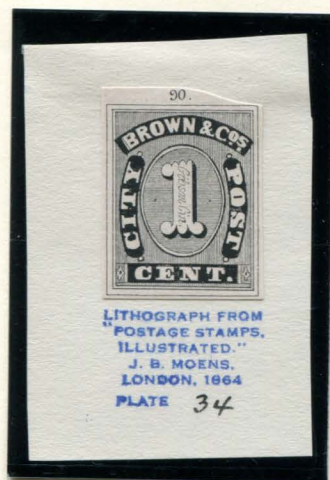
FORGERY C  
MOENS  
1¢ BLACK  
ON WHITE PELURE  
(29L1)



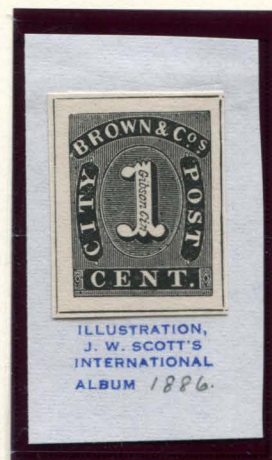
FORGERY C  
MOENS  
1¢ BLUE  
ON WHITE PELURE  
(29L1)



FORGERY C  
MOENS  
1¢ BLUE  
ON BUFF PELURE  
(29L1)



FORGERY E  
MOENS - ALBUM CUT  
1¢ BLACK  
ON WHITE  
(29L1)



FORGERY D  
SCOTT - ALBUM CUT  
1¢ BLACK  
ON WHITE  
(29L1)



FORGERY D  
SCOTT  
1¢ BLACK  
ON WHITE  
(29L1)



FORGERY D  
SCOTT  
1¢ BLACK  
ON CREAM  
(29L1)



# BROWNE & CO.'S CITY POST

Taylor's 2¢ forgery can be told apart from the originals, thanks to the square period after "POST".



FORGERY AA  
TAYLOR - FORM 9  
2¢ BLACK  
ON WHITE  
(29L2)



FORGERY AA  
TAYLOR - FORM 9  
2¢ BLACK  
ON PINK SC  
(29L2)



FORGERY AA  
TAYLOR - FORM 9  
2¢ BLACK  
ON SCARLET SC  
(29L2)



FORGERY AA  
TAYLOR - FORM 10  
2¢ BLACK  
ON BRIGHT NAVY BLUE SC  
(29L2)



FORGERY AA  
TAYLOR - FORM 10  
2¢ BLACK  
ON PALE GREEN V LAID  
(29L2)



FORGERY AA  
TAYLOR - FORM 17  
2¢ BLACK  
ON WHITE  
(29L2)



FORGERY AA  
TAYLOR - FORM 17  
2¢ BLACK  
ON CREAM  
(29L2)



FORGERY AA  
TAYLOR - FORM 17  
2¢ BLACK  
ON PINKISH CREAM  
(29L2)



FORGERY AA  
TAYLOR - FORM 21  
2¢ VIOLET  
ON BLUE  
(29L2)



FORGERY AA  
TAYLOR - FORM AA6  
2¢ BLACK  
ON PEACH SC  
(29L2)



FORGERY AA  
TAYLOR - FORM AA6  
2¢ BLACK  
ON VERMILION SC  
(29L2)



FORGERY AA  
TAYLOR - FORM AA6  
2¢ BLACK  
ON GREEN SC  
(29L2)



FORGERY AA  
TAYLOR - FORM AA6  
2¢ BLACK  
ON LIGHT BLUE SC  
(29L2)



FORGERY AA  
TAYLOR - FORM AA6  
2¢ BLACK  
ON BLUE SC  
(29L2)



# BROWNE & CO.'S CITY POST



FORGERY AA  
TAYLOR  
2¢ INTENSE BLACK  
ON WHITE  
(29L2)



FORGERY AA  
TAYLOR  
2¢ BLACK  
ON BUFF  
(29L2)



FORGERY AA  
TAYLOR  
2¢ GRAYISH BLACK  
ON OFF-WHITE  
(29L2)



FORGERY AA  
TAYLOR  
2¢ GRAYISH BLACK  
ON WHITE  
(29L2)



FORGERY AA  
TAYLOR  
2¢ BROWNISH BLACK  
ON OFF-WHITE  
(29L2)



FORGERY AA  
TAYLOR  
2¢ BROWN  
ON WHITE  
(29L2)



FORGERY AA  
TAYLOR  
2¢ RED BROWN  
ON WHITE  
(29L2)



FORGERY AA  
TAYLOR  
2¢ RED VIOLET  
ON WHITE  
(29L2)



FORGERY AA  
TAYLOR  
2¢ PALE BLUE  
ON WHITE  
(29L2)



FORGERY AA  
TAYLOR  
2¢ BLUE  
ON WHITE  
(29L2)  
"HALE & CO" FORGERY C  
PARTIAL ON THE RIGHT



FORGERY AA  
TAYLOR  
2¢ ULTRAMARINE  
ON WHITE  
(29L2)



FORGERY AA  
TAYLOR  
2¢ PALE ULTRAMARINE  
ON WHITE  
(29L2)  
"HALE & CO" FORGERY C  
PARTIAL ON THE RIGHT



FORGERY AA  
TAYLOR  
2¢ BLACK  
ON LIGHT BLUE VIOLET SC  
(29L2)



FORGERY AA  
TAYLOR  
2¢ BLACK  
ON YELLOW SC  
(29L2)



FORGERY AA  
TAYLOR  
2¢ BLACK  
ON GOLD YELLOW SC  
(29L2)



# BROWNE & CO.'S CITY POST



FORGERY BB  
2¢ BLACK  
ON WHITE  
(29L2)



At left is a clipping from the Scott's International Album, 1888. Scott also produced forgeries based on this illustration, show below. These are known as "Forgery DD".

FORGERY DD  
SCOTT  
2¢ BLACK  
ON WHITE  
(29L2)



FORGERY DD  
SCOTT  
2¢ BLACK  
ON WHITE  
(29L2)



FORGERY DD  
SCOTT  
2¢ BLACK  
ON PALE BUFF  
(29L2)

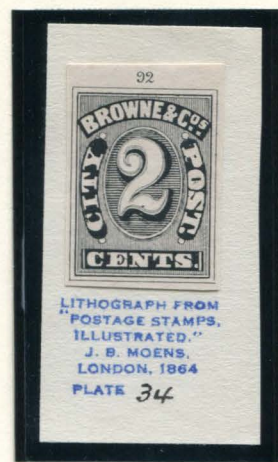


# BROWNE & CO.'S CITY POST

At right is a clipping from Moens's *Postage Stamps Illustrated*, published in 1864. Stamp imprints made with this lithograph are known as "Forgery EE".



FORGERY EE  
MOENS  
2¢ BLACK  
ON WHITE  
(29L2)



FORGERY EE  
MOENS  
2¢ BLACK  
ON WHITE  
(29L2)

The design was later copied by forgers. These "after Moens" fakes are known as "Forgery FF".



FORGERY FF  
AFTER MOENS  
2¢ BLACK  
ON WHITE  
(29L2)



FORGERY FF  
AFTER MOENS  
2¢ PURPLE  
ON WHITE  
(29L2)



FORGERY FF  
AFTER MOENS  
2¢ DEEP BLUE  
ON WHITE  
(29L2)



FORGERY FF  
AFTER MOENS  
2¢ BLUE  
ON WHITE  
(29L2)



FORGERY FF  
AFTER MOENS  
2¢ BLUE  
ON THIN WHITE  
(29L2)



FORGERY FF  
AFTER MOENS  
2¢ BLUE  
ON BUFF  
(29L2)



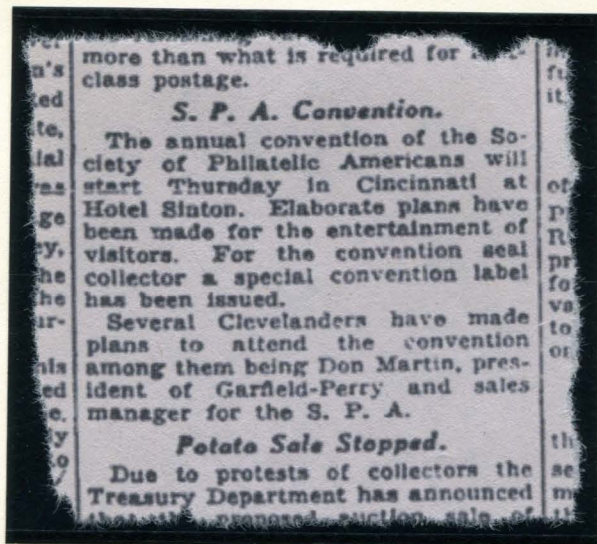
# BROWNE & CO.'S CITY POST

In 1936, the Cincinnati Stamp Collectors Club (a branch of the Society of Philatelic Americans) produced special souvenir printings of the 2¢ Browne & Co. stamp for their 42nd annual convention.



FORGERY GG  
CINCINNATI STAMP COLLECTORS CLUB  
SOUVENIR PROOF  
2¢ BLACK ON MANILA  
(29L2)

The example above is a proof of the die used to produce the souvenir items for the convention. All of the convention souvenirs included imprints of two 2¢ stamps. The most common souvenirs are cards with show information on the sides. These cards are printed on colored, horizontally laid and watermarked paper. The forgery was also printed on envelopes and cancelled with a special convention handstamp.



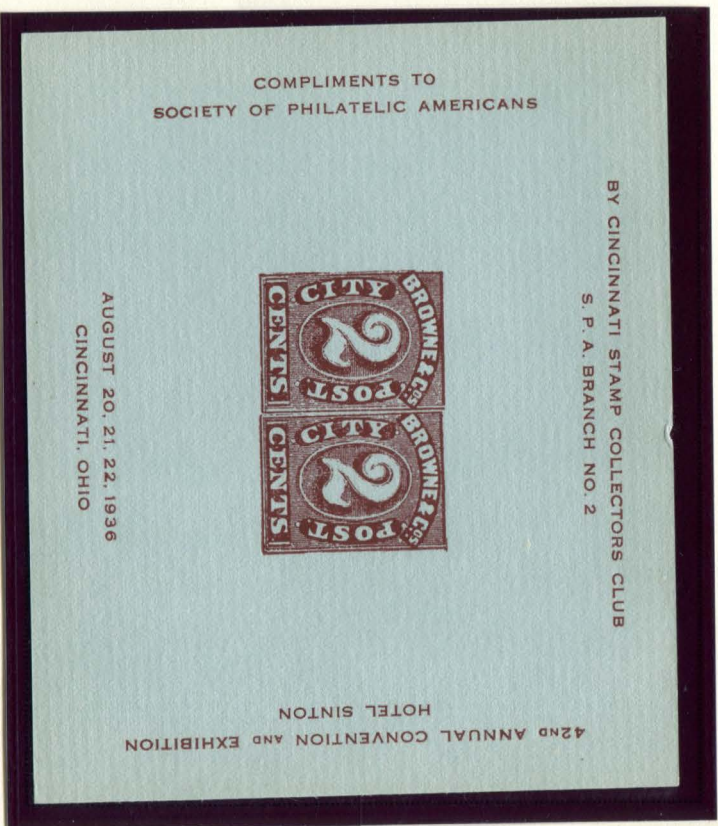
NEWS CLIPPING  
PLAIN DEALER CLEVELAND, OHIO  
AUGUST 16, 1936



# BROWNE & CO.'S CITY POST



FORGERY GG  
CINCINNATI STAMP COLLECTORS CLUB  
2¢ BROWN ON WHITE H LAID WITH WMK  
(29L2)

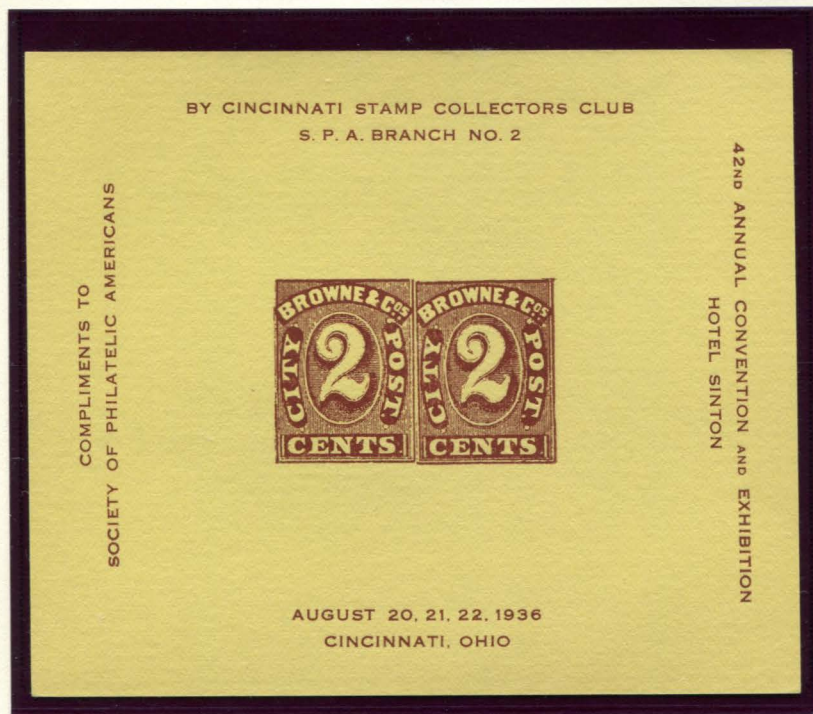


FORGERY GG  
CINCINNATI STAMP COLLECTORS CLUB  
2¢ BROWN ON PALE BLUE H LAID WITH WMK  
(29L2)



# BROWNE & CO.'S CITY POST

FORGERY GG  
CINCINNATI STAMP COLLECTORS CLUB  
2¢ BROWN ON PALE ORANGE H LAID WITH WMK  
(29L2)



FORGERY GG  
CINCINNATI STAMP COLLECTORS CLUB  
2¢ BROWN ON YELLOW H LAID WITH WMK  
(29L2)



# BROWNE & CO.'S CITY POST



FORGERY GG  
CINCINNATI STAMP COLLECTORS CLUB  
2c DARK BROWN ON ENVELOPE  
CINCINNATI, OHIO S.P.A CANCEL  
AUGUST 22, 1936  
(29L2)