

THE
MIKE FARRELL
COLLECTION
OF INDEPENDENT MAILS

INCLUDING THE HISTORY, FORGERIES, & FANTASIES OF
UNITED STATES, LOCAL POSTS, CARRIERS,
INDEPENDENT MAIL ROUTES, & EXPRESS CO.S

BROWNE'S EASTON DESPATCH

The information and identification within these selections is the individual work of the Farrell Collection. It is always recommended to consult multiple sources for additional information or opinions. Local post company descriptions are based on information available at the time of writing. Descriptions in the Farrell Collection were written based on personal research and sources including, but not limited to: Articles in the Carriers and Locals Society's The Penny Post; Amos Media's Scott Catalogue; Patton's The Private Local Post of the United States; Springer's Handbook of North American Cinderella Stamps; Lyons' Identifier for Carriers, Locals, Fakes Forgeries and Bogus Posts of the United States; articles in the USPS's The Chronicle; Mosher's Catalog of Private Express Labels and Stamps; The Eastern Independent Mail Company Study Group's Eastern Independent Mail Companies and Express Mail Companies 1840-1845; Elliot Perry's Pat Paragraphs; James N. Drummond's Catalog of Philatelic Miscellany; and the notes of George Sloane and Gordon Stimmell.

Colors listed for stamps and forgeries are the opinions of the Farrell Collection based on viewing physical copies of the pieces under consistent lighting. Colors in the .pdfs may be slightly inaccurate due to manipulations from the scanning process, computer monitor settings, or (in event that the files are printed for offline viewing) the printing process.

Unless otherwise noted, stamps are identified by their Scott Catalogue numbers and forgeries are identified by their Lyons Identifier type. Scott numbers in parenthesis under listed forgeries represent approximately what stamp the forgery is attempting to imitate.

Copyright Amos Media Company - 2018

The Scott Numbers are the copyrighted property of Amos Media Company, and are used here under a licensing agreement with Amos. The marks Scott and Scott's are Registered in the U.S. Patent and Trademark Office, and are trademarks of Amos Media Company. No use may be made of these marks or of material in this publication, which is reprinted from a copyrighted publication of Amos Media Company., without the express written permission of Amos Media Company, Sidney, Ohio 45365.

BROWNE'S EASTON DESPATCH

William J. Browne established this post in Easton, Pennsylvania around 1857. This post office produced three types of stamps, each with a 2¢ rate.

The first stamp was a simple square design with a single lined border. It was typographed black on red. Genuine examples of this stamp are incredibly rare. Only six examples are currently recorded.



30L1
2¢ BLACK
ON RED SC
PEN CANCEL

The second stamp, with a decorative border, is extremely rare. There are no examples listed in Siegel's auction records.

The third stamp featured a portrait of George Washington. This stamp is the most common of Browne's Easton Despatch stamps.



30L3
2¢ BLACK
ON WHITE
PEN CANCEL

BROWNE'S EASTON DESPATCH

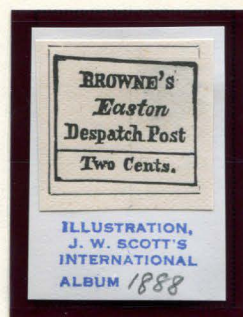
Forgeries of the first two types were mostly made by J. W. Scott, or were based on the illustrations from his International Album. The first type's forgeries can be identified as such by the lack of a period behind "BROWNE'S". As for the second type, Scott's design uses diamond-shaped ornaments rather than circular ones for the border.



TYPE I
FORGERY A
SCOTT
2¢ BLACK
ON VERMILION SC
(30L1)



TYPE I
FORGERY C
MODERN
2¢ BLACK
ON BRIGHT ORANGE SC
(30L1)



TYPE I
FORGERY C
SCOTT - ALBUM CUT
2¢ BLACK
ON WHITE
(30L1)

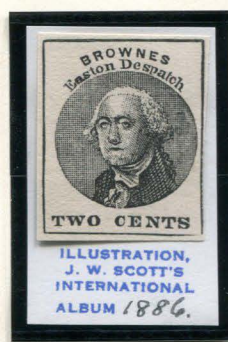


TYPE II
FORGERY A
SCOTT
2¢ BLACK
ON VERMILION SC
(30L2)

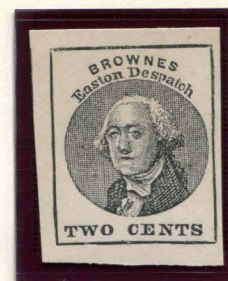
Scott also made forgeries of the third type, in which Washington appears to be looking upwards, and is missing his sideburns.



TYPE III
FORGERY A
SCOTT
2¢ BLACK
ON WHITE
(30L3)



TYPE III
FORGERY A
SCOTT - ALBUM CUT
2¢ BLACK
ON CREAM
(30L3)



TYPE III
FORGERY A
SCOTT
2¢ BLACK
ON CREAM
(30L3)

BROWNE'S EASTON DESPATCH

In S. A. Taylor's forgery, the "S" of "BROWNES" is more above the "p" of "Despatch" rather than above the "a" of it.



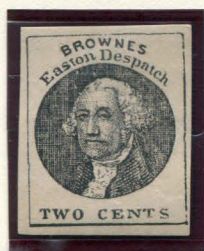
TYPE III
FORGERY B
TAYLOR - FORM B4
2c CARMINE
ON WHITE
(30L3)



TYPE III
FORGERY B
TAYLOR - FORM B4
2c PALE RED
ON WHITE
(30L3)



TYPE III
FORGERY B
TAYLOR - FORM B4
2c BLACK
ON WHITE
(30L3)



TYPE III
FORGERY B
TAYLOR - FORM AB7
2c BLACK
ON OFF-WHITE
(30L3)



TYPE III
FORGERY B
TAYLOR - FORM AB7
2c BLACK
ON YELLOW
(30L3)



TYPE III
FORGERY B
TAYLOR
2c YELLOW
ON WHITE
(30L3)

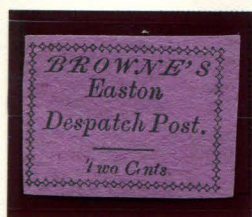
The next design was used by C. H. Coster in his 1879 edition of "The United States Locals and Their History", but was actually made by J. B. Moens for his international price catalogue. This forgery is easily identified by the clear grid in the background.



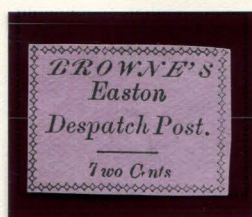
TYPE III
FORGERY C
MOENS
2c BLACK
ON YELLOWISH
(30L3)

BROWNE'S EASTON DESPATCH

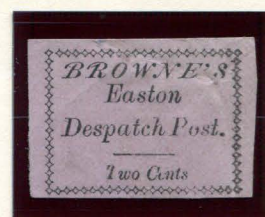
Three bogus stamps based on the "Browne's Easton Despatch" Type 1 design were made, two of which were created by Scott. Both his designs use a more decorative border than the original Type 1.



BOGUS 1
SCOTT
2¢ BLACK
ON PURPLE



BOGUS 1
SCOTT
2¢ BLACK
ON LIGHT VIOLET



BOGUS 1
SCOTT
2¢ BLACK
ON PINKISH



BOGUS 1
SCOTT
2¢ BLACK
ON BUFF



BOGUS 1
SCOTT
2¢ BLACK
ON PINKISH
WITH COUNTERFEIT
"PAID" HANDSTAMP

The other bogus was created by Taylor, and is smaller than any of the other stamps. It also has a double frame, with the outer border being much thicker.



BOGUS 2
TAYLOR - FORM AB12
2¢ BLACK
ON RED SC



BOGUS 2
TAYLOR - FORM AB12
2¢ BLACK
ON VERMILION SC



BOGUS 2
TAYLOR - FORM AB12
2¢ BLACK
ON LILAC SC



BOGUS 2
TAYLOR
2¢ RED
ON CREAM



BOGUS 2
TAYLOR
2¢ PALE RED
ON CREAM