

THE
MIKE FARRELL
COLLECTION
OF INDEPENDENT MAILS

INCLUDING THE HISTORY, FORGERIES, & FANTASIES OF
UNITED STATES, LOCAL POSTS, CARRIERS,
INDEPENDENT MAIL ROUTES, & EXPRESS CO.S

FANTASY LOCAL POSTS OF THE CONFEDERATE STATES

BUCK'S RICHMOND EXPRESS

The information and identification within these selections is the individual work of the Farrell Collection. It is always recommended to consult multiple sources for additional information or opinions. Local post company descriptions are based on information available at the time of writing.

Descriptions in the Farrell Collection were written based on personal research and sources including, but not limited to: Articles in the Carriers and Locals Society's The Penny Post; Amos Media's Scott Catalogue; Patton's The Private Local Post of the United States; Springer's Handbook of North American Cinderella Stamps; Lyons' Identifier for Carriers, Locals, Fakes Forgeries and Bogus Posts of the United States; articles in the USPS's The Chronicle; Mosher's Catalog of Private Express Labels and Stamps; The Eastern Independent Mail Company Study Group's Eastern Independent Mail Companies and Express Mail Companies 1840-1845; Elliot Perry's Pat Paragraphs; James N. Drummond's Catalog of Philatelic Miscellany; and the notes of George Sloane and Gordon Stimmell.

Colors listed for stamps and forgeries are the opinions of the Farrell Collection based on viewing physical copies of the pieces under consistent lighting. Colors in the .pdfs may be slightly inaccurate due to manipulations from the scanning process, computer monitor settings, or (in event that the files are printed for offline viewing) the printing process.

In this section, stamps and labels are identified by their Mosher Catalog numbers.

BUCK'S RICHMOND EXPRESS

The Buck's Richmond Express stamps are some of the most well known Confederate stamp fantasies. This fabricated independent post was first recorded in Europe. The stamps were listed in the addendum of Mount Brown's 1862 *Catalogue of British, Colonial, and Foreign Postage Stamps*. Brown's catalogue was published in London, where the stamps likely originated. Brown listed six denominations: 1¢ black, 2¢ rose, 5¢ brown, 10¢ blue, 15¢ green and 20¢ red. By 1864, the stamps were listed with an illustration in Moens' catalogue.

Confederate States of America.

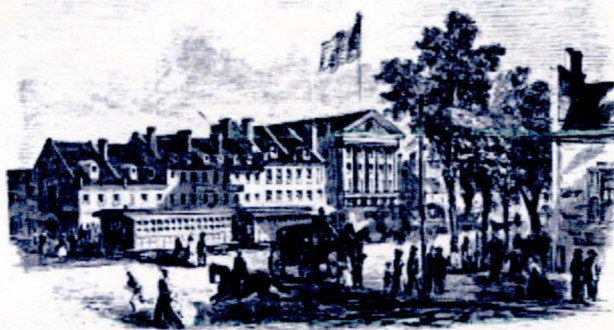
RICHMOND.

1862.—Inscription [*Buck's express paid, Richmond*] in a border, figure indicating value and inscription [*Confederate States only*] in centre. Col. imp.; rect.

1 cent. black, 2 c. rose, 5 c. brown, 10 c. blue.
15 c. green, 20 c. red.

FIRST KNOWN LISTING OF BUCK'S RICHMOND EXPRESS STAMPS
CATALOGUE OF BRITISH, COLONIAL, AND FOREIGN POSTAGE STAMPS
THIRD EDITION (PAGE 66) - BY MOUNT BROWN, 1862

These early listings assumed that the stamps were real; and stories circulated to explain their origin. The common story was that the express was ran by a older black man named George Sloan Buck, who carried luggage between hotels and railroad stations. One story claimed that the printing company Hoyer and Ludwig printed the stamps as payment for Buck's work. When they noticed the stamps' popularity with collectors, they printed and sold the stamps themselves. Another story claimed that Buck did not use stamps at all, but that forgers such as Taylor heard the story and used it as inspiration. These stories have never been confirmed, and are believed to be fictions created to sell the stamps.



THE RICHMOND, FREDERICKSBURG, AND
POTOMAC RAILROAD, VIRGINIA -
TRAIN STARTING OUT FROM RICHMOND
ILLUSTRATION BY JOHN R. HAMILTON
FOR HARPER'S WEEKLY, OCTOBER 1865

It was not long until the stamps were identified as illegitimate; by 1865 some publications were already warning collectors against purchasing the fakes. Even so, the stamps remained popular with unknowing collectors or with collectors of phantom posts.

The Buck's Richmond Express fakes were printed in three different types, which are catalogued differently depending on the authors. This collection will be organized according to the Rooke types, and numbers from Mosher's *Catalog of Private Express Covers, Labels and Stamps*.

BUCK'S RICHMOND EXPRESS

TYPE I

Type I stamps are identified by the inclusion of a period after the word "ONLY", eight-point stars in the corners, and no small dash under the "S" of "STATES". There are subtypes within this group based on several variations, which were probably printed by different forgers.



BKRX-S1
ROOKE TYPE I.1
1c BLACK
ON WHITE

TYPE I.1

In the April, 2011 issued of the *Penny Post*, Poklis attributes the 1.1 subtype to the English printers C&H Gloyne. These are possibly the "original" forgeries that were listed by Brown.

The 1.1 type stamps are known in Brown's original listed colors. All denominations are also known in black, which were sometimes listed as proofs.



BKRX-S2
ROOKE TYPE I.1
2c BLACK
ON WHITE



BKRX-S2
ROOKE TYPE I.1
2c ROSE
ON WHITE



BKRX-S2
ROOKE TYPE I.1
2c DULL RED
ON WHITE



BKRX-S3
ROOKE TYPE I.1
5c BLACK
ON WHITE



BKRX-S3
ROOKE TYPE I.1
5c RED BROWN
ON WHITE



BKRX-S3
ROOKE TYPE I.1
5c BROWN
ON WHITE



BKRX-S3
ROOKE TYPE I.1
5c DARK BROWN
ON WHITE

BUCK'S RICHMOND EXPRESS

TYPE I.1



BKRX-S4
ROOKE TYPE I.1
10c BLACK
ON WHITE



BKRX-S4
ROOKE TYPE I.1
10c BLUE
ON WHITE



BKRX-S4
ROOKE TYPE I.1
10c BLUE
ON WHITE - CANCELLED



BKRX-S5
ROOKE TYPE I.1
15c BLACK
ON WHITE



BKRX-S5
ROOKE TYPE I.1
15c GREEN
ON WHITE



BKRX-S5
ROOKE TYPE I.1
15c DARK GREEN
ON WHITE



BKRX-S5
ROOKE TYPE I.1
15c GREEN
ON WHITE - CANCELLED



BKRX-S6
ROOKE TYPE I.1
20c BLACK
ON WHITE



BKRX-S6
ROOKE TYPE I.1
20c RED
ON WHITE

There exists a recorded variation of the type I.1 stamps that is almost identical in design, with the exception of the line under "cents" being omitted.

BUCK'S RICHMOND EXPRESS

TYPE I.1

The cover below was crafted to look like a genuine usage of the Buck's bogus stamp. It was built by affixing the fake to a genuine cover mailed in 1856. The original letter was sent from Bucksport, Maine to Boston. Sometime later, the Buck's stamp was applied and cancelled with a Richmond, Texas CDS. A straight line "RICHMOND" handstamp was also applied to the reverse.



BKRX-S1 - ROOKE TYPE I.1
 2c ROSE ON WHITE
 CANCELLED WITH RICHMOND, TEXAS CDS
 - ON COVER WITH -
 11 : 3c DULL RED, TYPE I
 BUCKSPORT, MAINE CDS - SEPTEMBER 22, 1856
 WITH PHOTOCOPY OF REVERSE

It is unlikely that the Buck's stamps had anything to do with Texas. Even if they did, Texas would be out of the way for the delivery path of this letter. This is still a creative cover, using a genuine letter and connecting the name "Buck" with "Bucksport".

BUCK'S RICHMOND EXPRESS

TYPE I.2

Both the type 1.2 and type 1.2a stamps have a wider gap (1.5 mm) between the top of "CONFEDERATE" and the upper frame line; and between the bottom of "STATES ONLY" and the lower frame line. The type 1.2 stamp is the only known Buck's stamp type that is engraved; it is only known in the 20¢ value. The shading lines around the numeral slant upward to the right. The type 1.2a stamps have shading lines around the numerals that slant downward to the right on all denominations.



BKRX-S20
ROOKE TYPE I.2
1¢ BLACK
ON WHITE



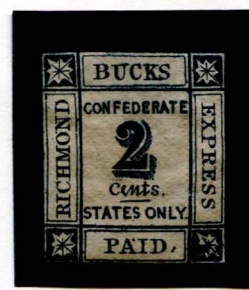
BKRX-S20
ROOKE TYPE I.2
1¢ BROWN
ON WHITE LAID



BKRX-S21
ROOKE TYPE I.2
2¢ RED BROWN
ON WHITE



BKRX-S21
ROOKE TYPE I.2
2¢ RED
ON WHITE



BKRX-S21
ROOKE TYPE I.2
2¢ BLUE
ON WHITE



BKRX-S22
ROOKE TYPE I.2
15¢ BROWN
ON WHITE



BKRX-S23
ROOKE TYPE I.2
15¢ BLUE
ON WHITE



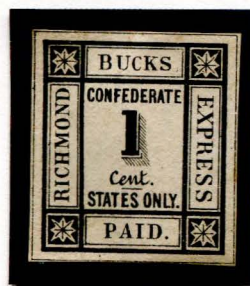
BKRX-S15
ROOKE TYPE I.2
20¢ RED
ON WHITE PELURE

BUCK'S RICHMOND EXPRESS

TYPE I.3 & VARIATIONS

The type I.3 stamps are primarily identified by the letters in the word "Cents" - the "C" and "e" are connected at the bottom; and the crossbar of the "t" is only on the right side of the upright. Only the 1¢ value has a period after "Cents"; the period is omitted on all other values. In the border, the "c" of "BUCKS" is shorter than the other letters; and the "P" and "A" of "PAID" are spaced farther apart than other types.

There are several variations within the type I.3 stamps - most of these are identified by wider or narrower numerals; wider or tighter shading under the numerals; or by shifted elements, including the location of the numeral under the word "CONFEDERATE".



BKRX-S30
ROOKE TYPE I.3
1¢ BLACK
ON WHITE
"1" STARTS UNDER "E"



BKRX-S30
ROOKE TYPE I.3
1¢ GRAY
ON WHITE
"1" STARTS UNDER "E"



BKRX-S30
ROOKE TYPE I.3VAR
1¢ BLACK
ON WHITE
WIDE NUMERAL
"1" STARTS UNDER "F"



BKRX-S30
ROOKE TYPE I.3VAR
1¢ BLACK
ON WHITE
NARROW NUMERAL
"1" STARTS UNDER "F"



BKRX-S31
ROOKE TYPE I.3
2¢ ROSE
ON WHITE
"2" STARTS UNDER "N"



BKRX-S31
ROOKE TYPE I.3VAR
2¢ VERMILION
ON WHITE
"2" STARTS AFTER "N"
MORE SHADING ON "2"

BUCK'S RICHMOND EXPRESS

TYPE I.3 & VARIATIONS



BKRX-S32
ROOKE TYPE I.3
5c BROWN
ON WHITE
"5" STARTS AFTER "N"



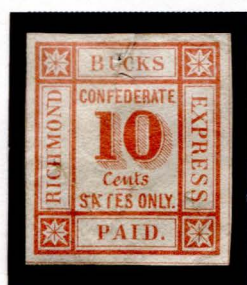
BKRX-S32
ROOKE TYPE I.3VAR
5c BROWN
ON WHITE
NARROW NUMERAL
"5" STARTS AFTER "F"



BKRX-S32
ROOKE TYPE I.3VAR
5c BROWN
ON WHITE
NARROWEST NUMERAL
"5" STARTS UNDER "F"



BKRX-S33
ROOKE TYPE I.3
10c BLUE
ON WHITE
"10" STARTS AFTER "O"



BKRX-S33
ROOKE TYPE I.3VAR
10c BLUE
ON WHITE
DIFFERENT SHADING
"10" STARTS AFTER "O"



BKRX-S34
ROOKE TYPE I.3
15c GREEN
ON WHITE
"15" STARTS AFTER "C"



BKRX-S34
ROOKE TYPE I.3VAR
15c GREEN
ON WHITE
NARROW NUMERAL
"15" STARTS UNDER "O"

The Rooke **TYPE I.4** stamp is identified by the loop of the "2" in the numeral 20, which is closed to look like an oval. This type is only known in the 20c value, and otherwise shares the characteristics of type I.3. For this reason, it is featured here as a variation of I.3.

Also featured below is another 20c stamp that shares type I.3 characteristics, but with a strangely shaped numeral. On this variation, the "2" in "20" looks like a "g" with a line underneath.



BKRX-S35
ROOKE TYPE I.3
20c VERMILION
ON WHITE
NORMAL NUMERAL



BKRX-S35
ROOKE TYPE I.4
5c BROWN
ON WHITE
CLOSED OVAL NUMERAL



BKRX-S35
ROOKE TYPE I.3VAR
5c BROWN
ON WHITE
"90" NUMERAL

BUCK'S RICHMOND EXPRESS

TYPE 1.5

Rooke's type 1.5 is based on the illustration published in Moens' 1864 *Les Timbres Poste Illustrés* catalogue. Only the 10¢ value is illustrated in the book, and the lithograph is attributed to his engraver, Pierre Schmitz.

OFFICES PARTICULIERS.

Type 4, planche 26.

Nom, chiffres indiquant la valeur, imp. coul. rect. de grande dimension.

Richmond Bucks express paid.

1 cent noir, 2 cents rose, 5 cents brun, 10 cents bleu, 15 cents vert, 20 cents rouge.

NOTA. Un cent vaut 0,084 centimes.

BUCK'S RICHMOND EXPRESS LISTING
FROM MOENS' *LES TIMBRES POSTE ILLUSTRÉS*, 1864



PHOTOCOPY FROM
MOEN'S 1864 CATALOGUE
PLATE 26
(ROOKE TYPE 1.5A)

Although Moens was not a forger himself, the engravings used for his catalogue illustration have been passed as forgeries. Only a 10¢ stamp was published in his book, but seven different denominations were created and printed on the so-called "gold sheet". The gold sheet (and sheets in several other colors) were large pages containing a collection of impressions from the dies used to print Moens' books. Not all of the type 1.5 stamps are known from complete sheets, and some may have been made by other forgers copying Moens' illustration.

An identifying characteristic of the type 1.5 stamps is that the "t" in "Cents" is tall and has a horizontal crossbar. All values, even the 1¢, read "Cents", with no period, under the numeral. This is the only type that produced a 4¢ value.



BKRX-S50
ROOKE TYPE 1.5
SCHMITZ
1¢ GREEN
ON WHITE



BKRX-S51
ROOKE TYPE 1.5
SCHMITZ
2¢ YELLOW
ON THIN CARD



BKRX-S51
ROOKE TYPE 1.5
SCHMITZ
2¢ GREEN
ON WHITE



BKRX-S52 & BKRX-S55 & BKRX-S56
ROOKE TYPE 1.5 - SCHMITZ
4¢ GOLD : 15¢ GOLD : 20¢ GOLD
ON WHITE - VERTICAL STRIP OF THREE

BUCK'S RICHMOND EXPRESS

TYPE I.5



BKRX-S53
ROOKE TYPE I.5
SCHMITZ
5c GOLD
ON WHITE



BKRX-S54
ROOKE TYPE I.5
SCHMITZ
10c GOLD
ON WHITE



BKRX-S54
ROOKE TYPE I.5
SCHMITZ
10c METALLIC GOLD
ON RED



BKRX-S55
ROOKE TYPE I.5
SCHMITZ
15c ORANGE BROWN
ON WHITE

TYPE I.6

Type I.6 stamps are similar to the type I.1 stamps in color and in numeral design. They can be identified by the shorter strokes in the "F" of "CONFEDERATE" and by the "S" in "STATES", which is dropped slightly lower than the other letters.



BKRX-S59
ROOKE TYPE I.6
1c BLACK
ON WHITE



BKRX-S59
ROOKE TYPE I.6
1c BLACK
ON WHITE - CANCELLED



BKRX-S60
ROOKE TYPE I.6
2c DULL RED
ON WHITE



BKRX-S61
ROOKE TYPE I.6
5c BROWN
ON WHITE



BKRX-S62
ROOKE TYPE I.6
10c BLUE
ON WHITE



BKRX-S63
ROOKE TYPE I.6
15c YELLOW GREEN
ON WHITE



BKRX-S64
ROOKE TYPE I.6
20c RED
ON WHITE

BUCK'S RICHMOND EXPRESS

TYPE II

S. Allan Taylor was responsible for creating the type II stamps, which can all be identified by the lack of a period after the word "ONLY", and having a small dash under the first "S" of "STATES". With the exception of one subtype, Taylor used the same overall design for all the type II stamps. He did use a variety of numeral shapes for the stamps, which are listed as most of the different subtypes.

Taylor did not create any 1¢ stamps, but added the 25¢ and 50¢ values in his designs. He probably created the new values because he already had the numerals for 2, 5, and 0 - it was easy to print them in different combinations to make more stamps. Although he had the numeral for 1, he probably did not print the 1¢ stamp because that would have required changing the text from "cents" to "cent", which would have taken more time and effort than simply replacing the numerals.

TYPE II.A

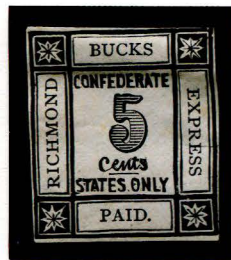
The type II.A stamps have numerals with horizontal lines in them. This type is divided into two extra subtypes depending on particular flaws in the design: The type II.A1 stamps are missing the top of the "ts" in "Cents", and the type II.A2 stamps have a defective left outer frame line, opposite of the "MO" of "RICHMOND". The II.A2 stamps are only known in the 2¢, 5¢, and 25¢ values, but the same flaw can be found on other subtypes which have the other values.



BKRX-S71
ROOKE TYPE II.A
TAYLOR - FORM S15
2¢ PALE BLUE
ON CREAM



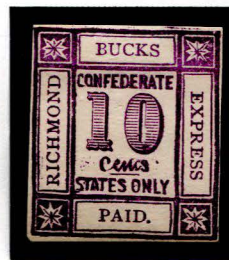
BKRX-S71
ROOKE TYPE II.A
TAYLOR - FORM S15
2¢ PALE BLUE
ON LIGHT PINK H. LAID



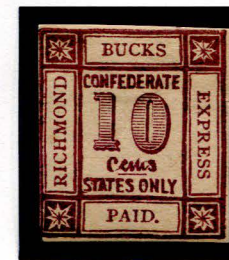
BKRX-S72
ROOKE TYPE II.A
TAYLOR
5¢ BLACK
ON WHITE



BKRX-S72
ROOKE TYPE II.A
TAYLOR
5¢ BLACK
ON BUFF



BKRX-S73
ROOKE TYPE II.A
TAYLOR
10¢ VIOLET
ON WHITE



BKRX-S73
ROOKE TYPE II.A
TAYLOR
10¢ DULL VIOLET
ON CREAM

BUCK'S RICHMOND EXPRESS

TYPE II.A



BKRX-S74
ROOKE TYPE II.A
TAYLOR
15¢ CARMINE
ON WHITE



BKRX-S74
ROOKE TYPE II.A
TAYLOR
15¢ RED ORANGE
ON BUFF



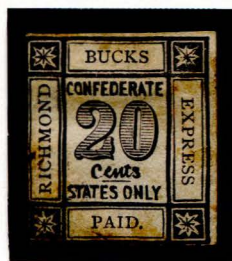
BKRX-S74
ROOKE TYPE II.A
TAYLOR
15¢ ORANGE
ON WHITE



BKRX-S75
ROOKE TYPE II.A
TAYLOR - FORM S12
20¢ RED
ON YELLOW



BKRX-S75
ROOKE TYPE II.A
TAYLOR - FORM S12
20¢ VIOLET RED
ON WHITE



BKRX-S75
ROOKE TYPE II.A
TAYLOR
20¢ DARK VIOLET
ON WHITE



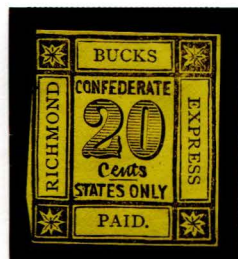
BKRX-S75
ROOKE TYPE II.A
TAYLOR
20¢ PURPLE
ON WHITE



BKRX-S75
ROOKE TYPE II.A
TAYLOR
20¢ PALE PURPLE
ON WHITE



BKRX-S75
ROOKE TYPE II.A
TAYLOR
20¢ PALE PURPLE
ON CREAM



BKRX-S75
ROOKE TYPE II.A
TAYLOR
20¢ BLACK
ON YELLOW



BKRX-S75
ROOKE TYPE II.A
TAYLOR
20¢ VIOLET
ON BLUE VIOLET V. LAID



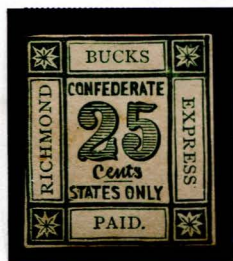
BKRX-S75
ROOKE TYPE II.A
TAYLOR
20¢ RED VIOLET
ON BLUE VIOLET V. LAID

BUCK'S RICHMOND EXPRESS

TYPE II.A



BKRX-S76
ROOKE TYPE II.A
TAYLOR
25¢ GREEN
ON WHITE



BKRX-S76
ROOKE TYPE II.A
TAYLOR
25¢ GREEN
ON BUFF



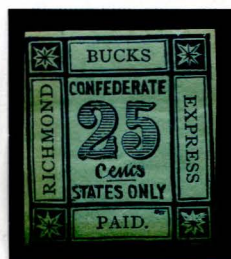
BKRX-S76
ROOKE TYPE II.A
TAYLOR
25¢ LIGHT GREEN
ON BUFF



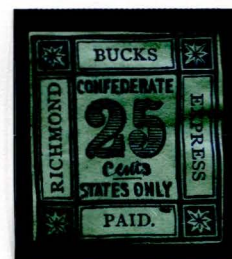
BKRX-S76
ROOKE TYPE II.A
TAYLOR
25¢ ORANGE
ON WHITE



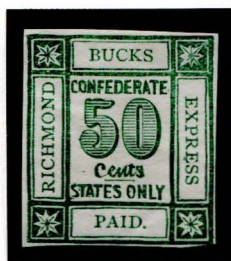
BKRX-S76
ROOKE TYPE II.A
TAYLOR
25¢ ORANGE BROWN
ON WHITE



BKRX-S76
ROOKE TYPE II.A
TAYLOR
25¢ BLUE
ON LIGHT BLUE GREEN



BKRX-S76
ROOKE TYPE II.A
TAYLOR
25¢ DARK BLUE
ON LIGHT BLUE GREEN



BKRX-S77
ROOKE TYPE II.A
TAYLOR
50¢ GREEN
ON WHITE

BUCK'S RICHMOND EXPRESS

TYPE II.A1



BKRX-S81
ROOKE TYPE II.A1
TAYLOR
2¢ DARK BLUE
ON WHITE



BKRX-S81
ROOKE TYPE II.A1
TAYLOR
2¢ BLUE
ON WHITE



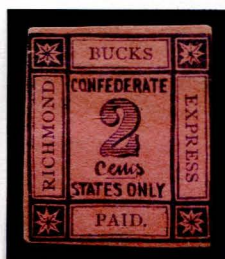
BKRX-S81
ROOKE TYPE II.A1
TAYLOR
2¢ LIGHT BLUE
ON WHITE



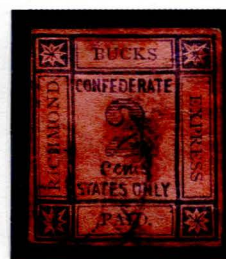
BKRX-S81
ROOKE TYPE II.A1
TAYLOR
2¢ PALE BLUE
ON WHITE



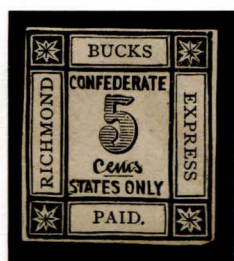
BKRX-S81
ROOKE TYPE II.A1
TAYLOR
2¢ LIGHT BLUE
ON YELLOW



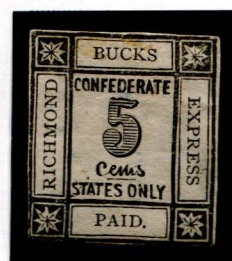
BKRX-S81
ROOKE TYPE II.A1
TAYLOR
2¢ LIGHT BLUE
ON PALE PINK



BKRX-S81
ROOKE TYPE II.A1
TAYLOR
2¢ LIGHT BLUE
ON PALE PINK
CANCELED



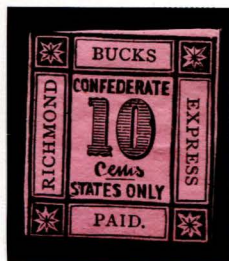
BKRX-S82
ROOKE TYPE II.A1
TAYLOR
5¢ BLACK
ON WHITE



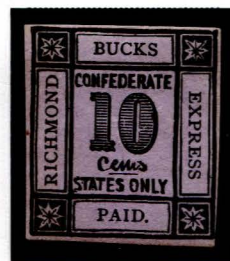
BKRX-S82
ROOKE TYPE II.A1
TAYLOR
5¢ GRAYISH BLACK
ON WHITE

BUCK'S RICHMOND EXPRESS

TYPE II.A1



BKRX-S83
ROOKE TYPE II.A1
TAYLOR - FORM S10
10¢ BLACK
ON PINK



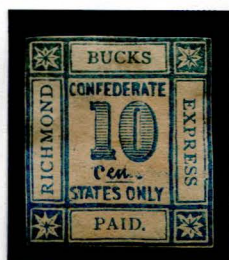
BKRX-S83
ROOKE TYPE II.A1
TAYLOR - FORM S10
10¢ BLACK
ON VIOLET GRAY



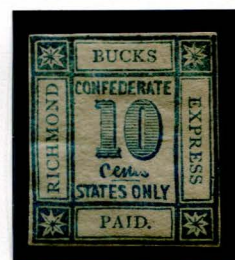
BKRX-S83
ROOKE TYPE II.A1
TAYLOR
10¢ LIGHT BLUE
ON WHITE



BKRX-S83
ROOKE TYPE II.A1
TAYLOR
10¢ GREENISH BLUE
ON WHITE



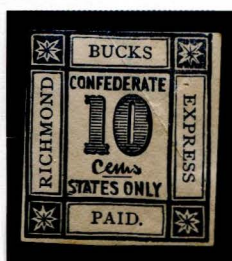
BKRX-S83
ROOKE TYPE II.A1
TAYLOR
10¢ GREENISH BLUE
ON CREAM



BKRX-S83
ROOKE TYPE II.A1
TAYLOR
10¢ GREENISH BLUE
ON GRAYISH



BKRX-S83
ROOKE TYPE II.A1
TAYLOR
10¢ LIGHT BLUE
ON WHITE WMK



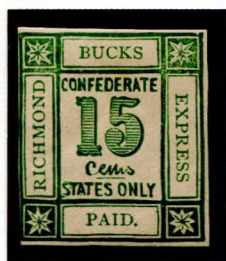
BKRX-S83
ROOKE TYPE II.A1
TAYLOR
10¢ DARK BLUE
ON WHITE



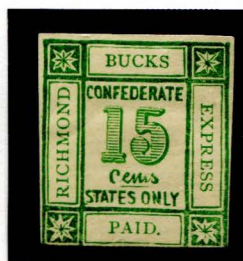
BKRX-S83
ROOKE TYPE II.A1
TAYLOR
10¢ RED VIOLET
ON TAN

BUCK'S RICHMOND EXPRESS

TYPE II.A1



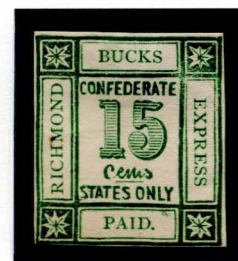
BKRX-S84
ROOKE TYPE II.A1
TAYLOR - FORM AB20
15c YELLOW GREEN
ON WHITE



BKRX-S84
ROOKE TYPE II.A1
TAYLOR - FORM AB20
15c YELLOW GREEN
ON CREAM H. LAID



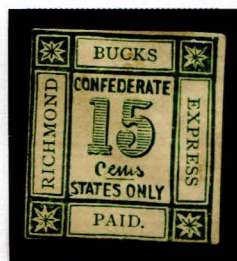
BKRX-S84
ROOKE TYPE II.A1
TAYLOR
15c GREEN
ON WHITE



BKRX-S84
ROOKE TYPE II.A1
TAYLOR
15c GREEN
ON YELLOWISH



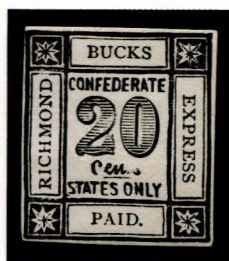
BKRX-S84
ROOKE TYPE II.A1
TAYLOR
15c YELLOWISH GREEN
ON CREAM H. LAID



BKRX-S84
ROOKE TYPE II.A1
TAYLOR
15c GREEN
ON CREAM H. LAID



BKRX-S84
ROOKE TYPE II.A1
TAYLOR
15c GREEN
ON GRAYISH H. LAID



BKRX-S85
ROOKE TYPE II.A1
TAYLOR
20c BLACK
ON WHITE



BKRX-S85
ROOKE TYPE II.A1
TAYLOR
20c VIOLET
ON WHITE



BKRX-S85
ROOKE TYPE II.A1
TAYLOR
20c VIOLET
ON PINK



BKRX-S85
ROOKE TYPE II.A1
TAYLOR
20c PALE RED
ON WHITE



BKRX-S85
ROOKE TYPE II.A1
TAYLOR
20c ORANGE RED
ON WHITE



BKRX-S85
ROOKE TYPE II.A1
TAYLOR
20c ORANGE
ON WHITE

BUCK'S RICHMOND EXPRESS

TYPE II.A1



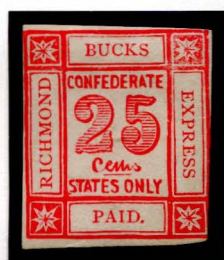
BKRX-S86
ROOKE TYPE II.A1
TAYLOR
25¢ PINK
ON CREAM



BKRX-S86
ROOKE TYPE II.A1
TAYLOR
25¢ LIGHT PINK
ON CREAM



BKRX-S86
ROOKE TYPE II.A1
TAYLOR
25¢ BRIGHT PINK
ON WHITE



BKRX-S86
ROOKE TYPE II.A1
TAYLOR
25¢ PINK
ON WHITE



BKRX-S86
ROOKE TYPE II.A1
TAYLOR
25¢ LIGHT PINK
ON CREAM



BKRX-S86
ROOKE TYPE II.A1
TAYLOR
25¢ BISTRE BROWN
ON WHITE



BKRX-S87
ROOKE TYPE II.A1
TAYLOR - FORM CS1
50¢ RED VIOLET
ON BLUE VIOLET H. LAID



BKRX-S87
ROOKE TYPE II.A1
TAYLOR - FORM CS1
50¢ RED VIOLET
ON BLUE VIOLET H. LAID
W. RULED BACK



BKRX-S87
ROOKE TYPE II.A1
TAYLOR
50¢ RED VIOLET
ON WHITE

BUCK'S RICHMOND EXPRESS

TYPE II.A2



BKRX-S88
ROOKE TYPE II.A2
TAYLOR
2¢ PINK
ON WHITE



BKRX-S88
ROOKE TYPE II.A2
TAYLOR
2¢ LIGHT RED VIOLET
ON CREAM



BKRX-S88
ROOKE TYPE II.A2
TAYLOR
2¢ LIGHT RED VIOLET
ON BLUE GREEN



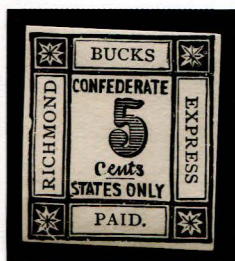
BKRX-S88
ROOKE TYPE II.A2
TAYLOR
2¢ BROWN
ON WHITE



BKRX-S88
ROOKE TYPE II.A2
TAYLOR
2¢ YELLOW BROWN
ON WHITE



BKRX-S88
ROOKE TYPE II.A2
TAYLOR
2¢ YELLOW BROWN
ON WHITE
CANCELED



BKRX-S88.1
ROOKE TYPE II.A2
TAYLOR
5¢ BLACK
ON WHITE



BKRX-S88.1
ROOKE TYPE II.A2
TAYLOR
5¢ BLACK
ON WHITE
CANCELED



BKRX-S88.2
ROOKE TYPE II.A2
TAYLOR
25¢ RED
ON WHITE



BKRX-S88.2
ROOKE TYPE II.A2
TAYLOR
25¢ RED
ON CREAM

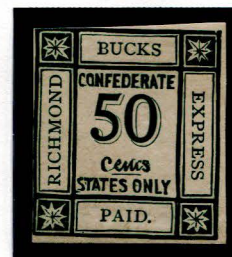


BKRX-S88.2
ROOKE TYPE II.A2
TAYLOR
25¢ RED
ON CREAM
CANCELED

BUCK'S RICHMOND EXPRESS

TYPE II.B

Only the 50¢ value is known for type II.B, which has thin solid numerals with a single shadow line.



BKRX-S90
ROOKE TYPE II.B
TAYLOR
50¢ GREEN
ON WHITE



BKRX-S95
ROOKE TYPE II.C
TAYLOR
15¢ BROWN
ON WHITE

TYPE II.C

The type II.C stamps have oddly shaped numerals with horizontal lines in them. These come in the 15¢, 20¢, and 50¢ values. They also have the same defective outer left frame as the type II.A2 stamps have. There is a 50¢ stamp known without the defect, which is classified as type II.C1.



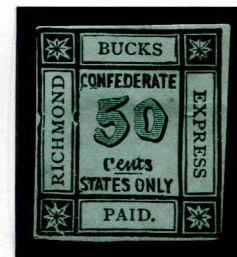
BKRX-S96
ROOKE TYPE II.C
TAYLOR - FORM AB9
20¢ RED
ON DEEP PINK



BKRX-S96
ROOKE TYPE II.C
TAYLOR - FORM AB9
20¢ RED
ON MANILA



BKRX-S96
ROOKE TYPE II.C
TAYLOR - FORM AB9
20¢ RED
ON MANILA
CANCELED



BKRX-S73
ROOKE TYPE II.C
TAYLOR
50¢ GREEN
ON LIGHT BLUE GREEN

BUCK'S RICHMOND EXPRESS

TYPE II.D

Two values, 5¢ and 15¢, are known in the type II.D design. The numerals have a full outline around them, followed by slanted shading lines. As with type II.A₁, the "ts" in "Cents" is missing the top half, especially noticeable in the 15¢ stamps.



BKRX-S102
ROOKE TYPE II.D
TAYLOR - FORM AB11
5¢ RED VIOLET
ON LIGHT BLUE GREEN



BKRX-S102
ROOKE TYPE II.D
TAYLOR - FORM AB11
5¢ RED VIOLET
ON LIGHT GREENISH



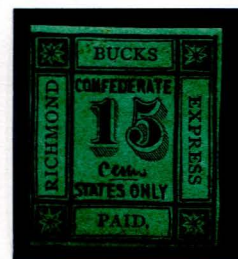
BKRX-S104
ROOKE TYPE II.D
TAYLOR
15¢ RED
ON YELLOWISH



BKRX-S104
ROOKE TYPE II.D
TAYLOR
15¢ RED VIOLET
ON WHITE



BKRX-S104
ROOKE TYPE II.D
TAYLOR
15¢ RED VIOLET
ON YELLOWISH



BKRX-S104
ROOKE TYPE II.D
TAYLOR
15¢ RED VIOLET
ON BLUE GREEN

BUCK'S RICHMOND EXPRESS

TYPE II.E

Only known in the 10¢ value, the type II.E stamps have numerals very similar to the type I stamps. They are solid with a single shadow line, followed by slanted shading lines.



BKRX-S105
ROOKE TYPE II.E
TAYLOR - FORM S9
10¢ LIGHT BLUE
ON PINKISH BUFF



BKRX-S105
ROOKE TYPE II.E
TAYLOR - FORM S9
10¢ LIGHT BLUE
ON WHITE



BKRX-S105
ROOKE TYPE II.E
TAYLOR - FORM S9
10¢ BLUE GREEN
ON WHITE



BKRX-S105
ROOKE TYPE II.E
TAYLOR
10¢ BROWN
ON WHITE

TYPE II.E1

This variation, known as type II.E1, has the same defect on the left outer frame line as in types II.A2 and II.C.

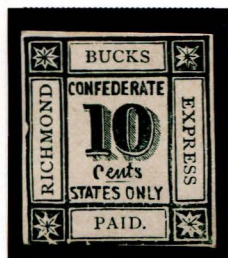
Including this type, all seven of Taylor's values are known with this defect, spread over three types.



BKRX-S107
ROOKE TYPE II.E1
TAYLOR
10¢ BLUE
ON WHITE



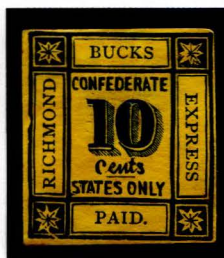
BKRX-S107
ROOKE TYPE II.E1
TAYLOR
10¢ BLUE
ON WHITE
CANCELED



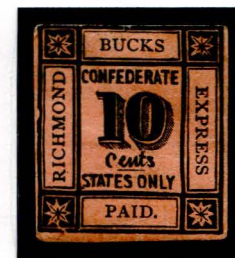
BKRX-S107
ROOKE TYPE II.E1
TAYLOR
10¢ GREEN
ON WHITE



BKRX-S107
ROOKE TYPE II.E1
TAYLOR
10¢ YELLOW
ON WHITE



BKRX-S107
ROOKE TYPE II.E1
TAYLOR
10¢ BLUE
ON YELLOW



BKRX-S107
ROOKE TYPE II.E1
TAYLOR
10¢ GREEN
ON SALMON H. LAID

BUCK'S RICHMOND EXPRESS

TYPE II.F

Type II.F is the only type II that has a slightly different outline, with all four words ("BUCKS", "RICHMOND", "EXPRESS" and "PAID.") larger than in the other type II stamps. Taylor kept everything else the same, and even used the same numeral as in type II.E. As such, this type is also only known in the 10¢ value.



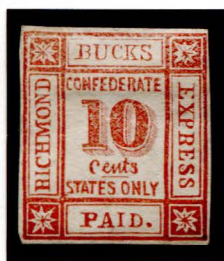
BKRX-S110
ROOKE TYPE II.F
TAYLOR
10¢ BLUE
ON WHITE



BKRX-S110
ROOKE TYPE II.F
TAYLOR
10¢ BLUE
ON YELLOWISH



BKRX-S110
ROOKE TYPE II.F
TAYLOR
10¢ LIGHT GREEN
ON WHITE



BKRX-S110
ROOKE TYPE II.F
TAYLOR
10¢ RED ORANGE
ON WHITE



BKRX-S110
ROOKE TYPE II.F
TAYLOR
10¢ RED VIOLET
ON WHITE



BKRX-S110
ROOKE TYPE II.F
TAYLOR
10¢ RED VIOLET
ON GRAYISH



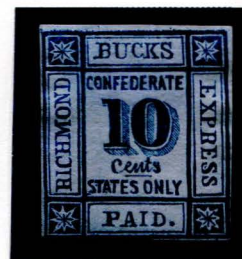
BKRX-S110
ROOKE TYPE II.F
TAYLOR
10¢ RED VIOLET
ON YELLOWISH



BKRX-S110
ROOKE TYPE II.F
TAYLOR
10¢ RED VIOLET
ON GRAYISH BLUE



BKRX-S110
ROOKE TYPE II.F
TAYLOR
10¢ RED VIOLET
ON YELLOW



BKRX-S110
ROOKE TYPE II.F
TAYLOR
10¢ BLUE
ON GRAYISH BLUE V. LAID

BUCK'S RICHMOND EXPRESS

TYPE II.G

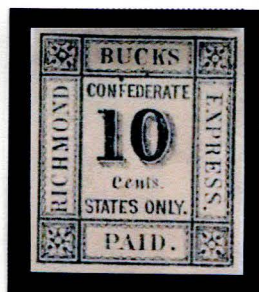
This final Taylor type is only known in the 5¢ value, and it has a solid numeral, without any shading. The top of "ts" in "Cents" is missing, similar to the types II.A1 and II.D.



BKRX-S1115
ROOKE TYPE II.G
TAYLOR
5¢ BLACK
ON WHITE

TYPE III

This third type of Buck's stamps are modern fakes. They are easily identifiable by the ornaments in the corners, which resemble Maltese crosses, rather than the star-shaped ornaments on all other types. For more information on the Type III Buck's, see the 2018 Mosher *Catalog of Private Express Covers, Labels and Stamps* (page 87) or the January 2011 issue of *The Penny Post* (page 9).



BKRX-S124
TYPE III
5¢ BLACK
ON BUFF
PHOTOCOPY