

CARNES' CITY LETTER EXPRESS

Created by former post office clerk George A. Carnes in the spring of 1864, this local post served the city of San Francisco. Its stamp, featuring a bear, sold for 5¢. This stamp, when surcharged with a blue X, sold for 10¢, supposedly for the delivery of Valentines.



35L1
GENUINE
5¢ ROSE
ON WHITE



35L1
GENUINE
5¢ ROSE (SHADE)
ON WHITE



35L2
GENUINE
10¢ ROSE
ON WHITE
BLUE "X" SURCHARGE



35L1 : GENUINE
5¢ ROSE ON WHITE
BLOCK OF SIX

Common cancellations of the original Carnes bear stamp are a black "PAID" handstamp, black dots, blue dots, or a double lined "Wm. A. Frey" handstamp. William A. Frey, who ran a short lived Valentine Express in San Francisco, may have been a partner to Carnes.



35L1
GENUINE
5¢ ROSE
ON WHITE
"PAID" MANUSCRIPT



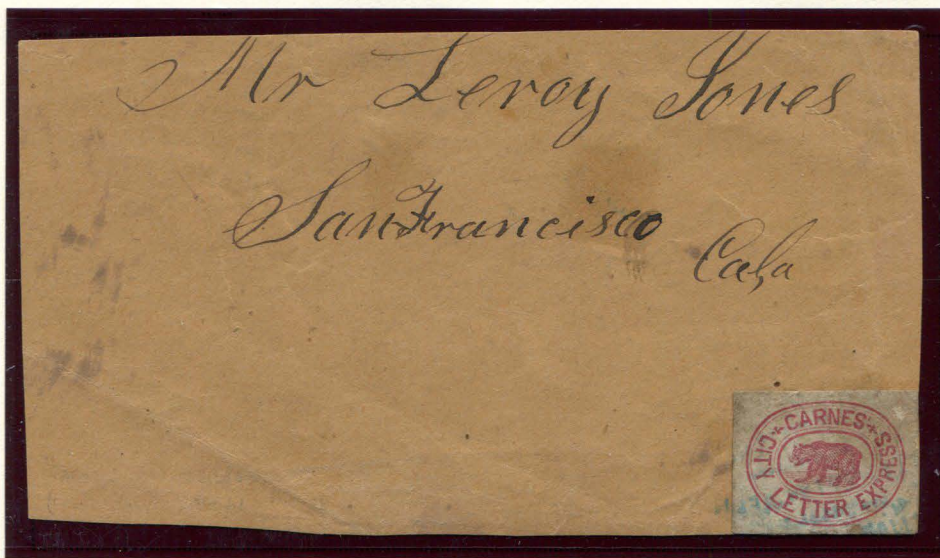
35L1
GENUINE
5¢ ROSE
ON WHITE
BLUE "PAID" HANDSTAMP



35L1
GENUINE
5¢ ROSE
ON WHITE
BLUE OVAL HANDSTAMP

CARNES' CITY LETTER EXPRESS

The piece below is an example of a genuine, used Carnes stamp. The cancellation, a blue handstamp of small text, is unknown.



35L1 : 5¢ ROSE ON WHITE
GENUINE - ON PARTIAL COVER
BLUE CANCELLATION
APS# 51033

Carnes stamps are also known on cover with the horse and rider San Francisco Letter Express oval handstamp. Carnes bought the San Francisco Letter Express in 1865 and absorbed it into his own local post.

In late 1865, Carnes sold his post to William E. Loomis. Loomis continued using remainders of the Carnes bear stamps from his own letter express business.

CARNES' CITY LETTER EXPRESS

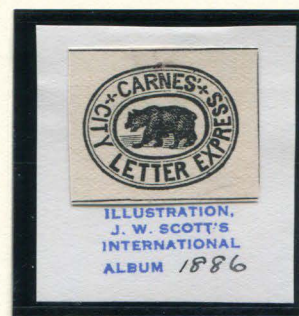
J. W. Scott produced forgeries of the small "Carnes' City Letter Express" stamp design, both without and with the blue "X" surcharge overprint.



FORGERY A
SCOTT
5c RED
ON WHITE
(35L1)



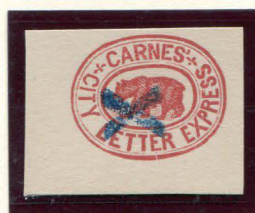
FORGERY A
SCOTT
5c RED
ON CREAM
(35L1)



FORGERY A
SCOTT - ALBUM CUT
5c BLACK
ON CREAM
(35L1)



FORGERY A
SCOTT
10c RED W/ BLUE X
ON WHITE
(35L2)



FORGERY A
SCOTT
10c RED W/ BLUE X
ON CREAM
(35L2)



FORGERY A
SCOTT
10c ORANGE RED W/ BLUE X
ON OFF-WHITE
(35L2)

S. A. Taylor created two different forgeries of the small stamp, with the second design missing the apostrophe after "CARNES".



FORGERY B
TAYLOR - FORM B4
5c CARMINE
ON WHITE
(35L1)



FORGERY B
TAYLOR - FORM B4
5c BLACK
ON WHITE
(35L1)



FORGERY B
TAYLOR - FORM B5
5c VIOLET
ON WHITE
(35L1)



FORGERY B
TAYLOR - FORM B5
5c VIOLET
ON CREAM
(35L1)



FORGERY B
TAYLOR - FORM AB8
5c ORANGE
ON WHITE
(35L1)



FORGERY B
TAYLOR - FORM AB8
5c ORANGE
ON BUFF
(35L1)

CARNES' CITY LETTER EXPRESS



FORGERY B
TAYLOR - FORM BB6
5c ULTRAMARINE
ON WHITE
(35L1)



FORGERY B
TAYLOR - FORM BB6
5c ULTRAMARINE
ON ORANGE BUFF
(35L1)



FORGERY B
TAYLOR - FORM S6
5c BLACK
ON WHITE
(35L1)



FORGERY B
TAYLOR - FORM S6
5c BLACK
ON BUFF
(35L1)



FORGERY B
TAYLOR - FORM S6
5c PINK
ON WHITE
(35L1)



FORGERY B
TAYLOR - FORM S6
5c PINK
ON CREAM
(35L1)



FORGERY B
TAYLOR - FORM S6
5c BRIGHT PINK
ON WHITE
(35L1)



FORGERY B
TAYLOR
5c BLACK
ON ORANGE BUFF V LAID
(35L1)



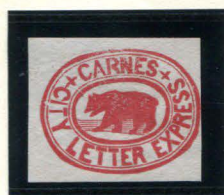
FORGERY B
TAYLOR
5c RED VIOLET
ON CREAM V LAID
(35L1)



FORGERY B
TAYLOR
5c PALE PURPLE
ON WHITE
(35L1)



FORGERY B
TAYLOR
5c BLACK
ON RED SC
(35L1)



FORGERY E
TAYLOR - FORM 12
5c RED
ON WHITE
(35L1)



FORGERY E
TAYLOR - FORM 12
5c RED
ON GRAY
(35L1)



FORGERY E
TAYLOR
5c BLUE
ON LIGHT BLUE GREEN
(35L1)

CARNES' CITY LETTER EXPRESS

The following forgery of the small stamp design was made and printed together with the larger stamp's forgery known as the "second reprint". A partial of this other stamp can be seen on the first stamp. It is unknown who created these.



FORGERY C
5c ORANGE
ON WHITE
(35L1)



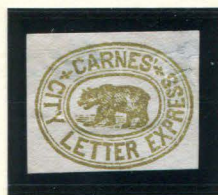
FORGERY C
5c DULL RED
ON WHITE
(35L1)



FORGERY C
5c BLACK
ON WHITE
(35L1)



FORGERY C
5c BLACK
ON BUFF
(35L1)



FORGERY C
5c GOLD
ON WHITE
(35L1)



FORGERY C
5c SILVER
ON WHITE
(35L1)



FORGERY C
5c BLUE
ON WHITE
(35L1)



FORGERY C
5c SKY BLUE
ON WHITE
(35L1)

Several other forgeries were made of this "Carnes' City Letter Express" stamp, including a more modern version by David M. Stirling. The other two designs are by unknown forgers.



FORGERY D
5c RED
ON WHITE
(35L1)



FORGERY D
5c RED
ON WHITE
(35L1)
WITH FAKE CANCEL



FORGERY F
5c RED ORANGE
ON BUFF
(35L1)



FORGERY G
STIRLING
5c BLACK
ON RED VIOLET
(35L1)



FORGERY G
STIRLING
5c BLACK
ON YELLOW
(35L1)



FORGERY G
STIRLING
5c BLACK
ON GREEN SC
(35L1)

CARNES' CITY LETTER EXPRESS

After the first stamps were produced, samples were sent to a stamp dealer in England. Because the stamps had no city name, they were hard to sell. The dealer requested that Loomis design a new stamp with more text. The new, larger bear stamp was produced in six colors. While these stamps are authentic, they were primarily a philatelic issue.



35L3
GENUINE
5¢ BRONZE
ON WHITE



35L4
GENUINE
5¢ GOLD
ON WHITE



35L5
GENUINE
5¢ SILVER
ON WHITE



35L6
GENUINE
5¢ BLACK
ON WHITE



35L7
GENUINE
5¢ BLUE
ON WHITE



35L8
GENUINE
5¢ RED
ON WHITE

Some of the large bear stamps were printed in slight shade or printing quality variations.



35L7
GENUINE
5¢ BLUE (SHADE)
ON WHITE



35L8
GENUINE
5¢ RED (SHADE)
ON WHITE

CARNES' CITY LETTER EXPRESS

The large bear stamps were printed in panes of eighteen, organized in three columns of six. The panes were built from three settings of six, with the bottom setting inverted. This resulted in three tête-bêche pairs in each pane.



35L4
GENUINE
5¢ GOLD
ON WHITE
TÊTE-BÊCHE PAIR

The following pages feature a full pane of blue stamps, and a partial pane of fifteen red stamps. Both include the three tête-bêche pairs.

CARNES' CITY LETTER EXPRESS



35L7 : GENUINE
5¢ BLUE ON WHITE
FULL PANE OF EIGHTEEN
THREE TÊTE-BÊCHE PAIRS

CARNES' CITY LETTER EXPRESS



35LS : GENUINE
5¢ RED ON WHITE
PAINE OF FIFTEEN
THREE TÊTE-BÊCHE PAIRS

CARNES' CITY LETTER EXPRESS

Two different reprints were made of the original larger "Carnes San Francisco Letter Express" design. The first reprint most likely used a transfer of the original stone, and was printed in strips of three, with a red stamp on the left, a bronze stamp in the middle, and a blue stamp on the right. The colors are a little brighter than those of the original stamps, and they were printed on wove paper with a much clearer diamond mesh than the wove paper of the original stamps.



FIRST REPRINT
5c RED - BRONZE - DARK BLUE
ON WHITE
(35L8 - 35L3 - 35L7)
STRIP OF THREE

The second reprint is much cruder than the first one, and was printed together with a forgery of the smaller stamp design. It exists in more colors than the three colors used for the first reprint.



SECOND REPRINT
5c GOLD
ON WHITE
(35L4)



SECOND REPRINT
5c SILVER
ON WHITE
(35L5)



SECOND REPRINT
5c BLACK
ON WHITE
(35L6)



SECOND REPRINT
5c BLUE
ON WHITE
(35L7)



SECOND REPRINT
5c SKY BLUE
ON WHITE
(35L7)



SECOND REPRINT
5c ORANGE
ON WHITE
(35L8)

CARNES' CITY LETTER EXPRESS

S. Allan Taylor's forgery can be identified by the lack of a tail on the bear, and the more rounded mountain shape behind it. This forgery is one of Taylor's most common contributions, if not the most, available in what could be over a hundred color combinations.



FORGERY A
TAYLOR - FORM 1
5c BLACK
ON WHITE WMK
(35L3 - L8)



FORGERY A
TAYLOR - FORM 1
5c BLACK
ON GREENISH V LAID
(35L3 - L8)



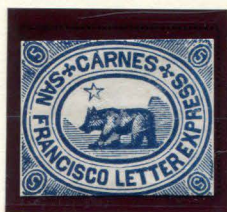
FORGERY A
TAYLOR - FORM 1
5c BLACK
ON PALE PINK H LAID
(35L3 - L8)



FORGERY A
TAYLOR - FORM 1
5c BLACK
ON SALMON
(35L3 - L8)



FORGERY A
TAYLOR - FORM 1
5c BLACK
ON BLUISH
(35L3 - L8)



FORGERY A
TAYLOR - FORM 6
5c BLUE
ON WHITE
(35L3 - L8)



FORGERY A
TAYLOR - FORM 6
5c BLUE
ON PINK
(35L3 - L8)



FORGERY A
TAYLOR - FORM 6
5c BLUE
ON BLUE
(35L3 - L8)



FORGERY A
TAYLOR - FORM 10
5c BLACK
ON PALE GREEN V LAID
(35L3 - L8)



FORGERY A
TAYLOR - FORM 10
5c BLACK
ON BRIGHT NAVY BLUE SC
(35L3 - L8)

CARNES' CITY LETTER EXPRESS



FORGERY A
TAYLOR - FORM 18
5¢ BLACK
ON VIOLET BLUE
(35L3 - L8)



FORGERY A
TAYLOR - FORM 18
5¢ BLACK
ON GRAY GREEN
(35L3 - L8)



FORGERY A
TAYLOR - FORM 18
5¢ BLACK
ON ORANGE BUFF
(35L3 - L8)



FORGERY A
TAYLOR - FORM 18
5¢ ORANGE
ON WHITE
(35L3 - L8)



FORGERY A
TAYLOR - FORM 18
5¢ BLACKISH BROWN
ON WHITE
(35L3 - L8)



FORGERY A
TAYLOR - FORM AA2
5¢ ORANGE RED
ON WHITE
(35L3 - L8)



FORGERY A
TAYLOR - FORM AA2
5¢ ORANGE
ON WHITE
(35L3 - L8)



FORGERY A
TAYLOR - FORM AA2
5¢ RED ORANGE
ON YELLOWISH
(35L3 - L8)



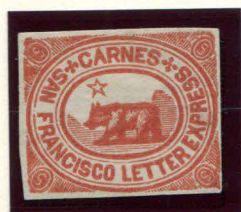
FORGERY A
TAYLOR - FORM AA2
5¢ RED
ON YELLOWISH
(35L3 - L8)



FORGERY A
TAYLOR - FORM AA2
5¢ BRIGHT RED
ON YELLOWISH
(35L3 - L8)



FORGERY A
TAYLOR - FORM AA2
5¢ ORANGE RED
ON BLuish WHITE
(35L3 - L8)



FORGERY A
TAYLOR - FORM AA2
5¢ ORANGE RED
ON YELLOWISH H LAID
(35L3 - L8)



FORGERY A
TAYLOR - FORM AA2
5¢ ORANGE RED
ON YELLOW GREENISH
H LAID
(35L3 - L8)



FORGERY A
TAYLOR - FORM AA2
5¢ ORANGE RED
ON VIOLET PINK H LAID
(35L3 - L8)

CARNES' CITY LETTER EXPRESS



FORGERY A
TAYLOR - FORM AA3
5¢ GOLD
ON DARK BROWN SC
(35L3 - L8)



FORGERY A
TAYLOR - FORM AA3
5¢ GOLD
ON GREEN SC
(35L3 - L8)



FORGERY A
TAYLOR - FORM AA3
5¢ GOLD
ON BRIGHT BLUE SC
(35L3 - L8)



FORGERY A
TAYLOR - FORM AA3
5¢ GOLD
ON VIOLET BLUE SC
(35L3 - L8)



FORGERY A
TAYLOR - FORM AA3
5¢ GOLD
ON BRIGHT PURPLE SC
(35L3 - L8)



FORGERY A
TAYLOR - FORM AA3
5¢ GOLD
ON MAGENTA SC
(35L3 - L8)



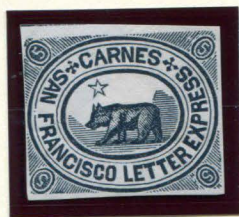
FORGERY A
TAYLOR - FORM AA3
5¢ GOLD
ON PALE VIOLET SC
(35L3 - L8)



FORGERY A
TAYLOR - FORM AA8
5¢ BLACK
ON DULL YELLOW
(35L3 - L8)



FORGERY A
TAYLOR - FORM AA8
5¢ BLACK
ON DULL BLUE
(35L3 - L8)



FORGERY A
TAYLOR - FORM AA15
5¢ DARK NAVY BLUE
ON WHITE
(35L3 - L8)



FORGERY A
TAYLOR - FORM AA15
5¢ BLUE
ON WHITE
(35L3 - L8)



FORGERY A
TAYLOR - FORM AA15
5¢ BLUE
ON BLUISH
(35L3 - L8)

CARNES' CITY LETTER EXPRESS



FORGERY A
TAYLOR - FORM AA16
5¢ GRAYISH BLUE
ON WHITE
(35L3 - L8)



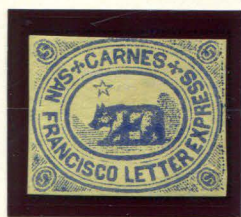
FORGERY A
TAYLOR - FORM AA16
5¢ RED BROWN
ON WHITE
(35L3 - L8)



FORGERY A
TAYLOR - FORM AA16
5¢ VIOLET BROWN
ON WHITE
(35L3 - L8)



FORGERY A
TAYLOR - FORM AA16
5¢ BROWN PURPLE
ON WHITE
(35L3 - L8)



FORGERY A
TAYLOR - FORM AA19
5¢ BLUE
ON YELLOW V LAID
(35L3 - L8)



FORGERY A
TAYLOR - FORM AA19
5¢ BLUE
ON LIGHT PINK V LAID
(35L3 - L8)



FORGERY A
TAYLOR - FORM AA25
5¢ BLACK
ON LIGHT BLUE VIOLET
(35L3 - L8)



FORGERY A
TAYLOR - FORM AA25
5¢ BLACK
ON LIGHT BLUE
(35L3 - L8)



FORGERY A
TAYLOR - FORM AB4
5¢ GREEN
ON GRAY BUFF
(35L3 - L8)



FORGERY A
TAYLOR - FORM AB4
5¢ GREEN
ON YELLOW
(35L3 - L8)



FORGERY A
TAYLOR - FORM AB4
5¢ GREEN
ON LIGHT YELLOW
H LAID
(35L3 - L8)



FORGERY A
TAYLOR - FORM AB4
5¢ GREEN
ON LIGHT YELLOW
V LAID
(35L3 - L8)



FORGERY A
TAYLOR - FORM AB6
5¢ BLUE
ON YELLOWISH H LAID
(35L3 - L8)



FORGERY A
TAYLOR - FORM AB6
5¢ BLUE
ON WHITE
(35L3 - L8)



FORGERY A
TAYLOR - FORM AB6
5¢ DARK BLUE
ON OFF-WHITE
(35L3 - L8)

CARNES' CITY LETTER EXPRESS



FORGERY A
TAYLOR - FORM AB9
5¢ RED
ON MANILLA
(35L3 - L8)



FORGERY A
TAYLOR - FORM AB9
5¢ RED
ON DEEP PINK
(35L3 - L8)



FORGERY A
TAYLOR - FORM AB10
5¢ BLACK
ON BRIGHT PINK V LAID
(35L3 - L8)



FORGERY A
TAYLOR - FORM AB10
5¢ BLACK
ON FLESH V LAID
(35L3 - L8)



FORGERY A
TAYLOR - FORM AB16
5¢ RED BROWN
ON WHITE
(35L3 - L8)



FORGERY A
TAYLOR - FORM AB16
5¢ BROWN
ON YELLOWISH
(35L3 - L8)



FORGERY A
TAYLOR - FORM S8
5¢ DULL RED VIOLET
ON WHITE
(35L3 - L8)



FORGERY A
TAYLOR - FORM S8
5¢ VIOLET RED
ON WHITE
(35L3 - L8)



FORGERY A
TAYLOR
5¢ RED
ON WHITE H LAID
(35L3 - L8)



FORGERY A
TAYLOR
5¢ BLUE
ON BLUISH H LAID
(35L3 - L8)



FORGERY A
TAYLOR
5¢ BLACK
ON WHITE
(35L3 - L8)

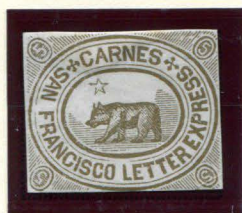


FORGERY A
TAYLOR
5¢ BLACK
ON OFF-WHITE
(35L3 - L8)



FORGERY A
TAYLOR
5¢ BLACK
ON BUFF
(35L3 - L8)

CARNES' CITY LETTER EXPRESS



FORGERY A
TAYLOR
5¢ GOLD
ON WHITE
(35L3 - L8)



FORGERY A
TAYLOR
5¢ SILVER
ON WHITE
(35L3 - L8)



FORGERY A
TAYLOR
5¢ BRONZE
ON WHITE
(35L3 - L8)



FORGERY A
TAYLOR
5¢ BLUE
ON WHITE
(35L3 - L8)



FORGERY A
TAYLOR
5¢ BLUE
ON OFF-WHITE
(35L3 - L8)



FORGERY A
TAYLOR
5¢ DULL BLUE
ON OFF-WHITE
(35L3 - L8)



FORGERY A
TAYLOR
5¢ BLUE VIOLET
ON OFF-WHITE
(35L3 - L8)



FORGERY A
TAYLOR
5¢ BLUE
ON GREENISH WHITE
(35L3 - L8)



FORGERY A
TAYLOR
5¢ BLUE
ON GRAY BUFF
(35L3 - L8)



FORGERY A
TAYLOR
5¢ BLUE
ON LIGHT BLUE GREEN
(35L3 - L8)



FORGERY A
TAYLOR
5¢ PALE VIOLET
ON CREAM
(35L3 - L8)



FORGERY A
TAYLOR
5¢ VIOLET
ON WHITE
(35L3 - L8)



FORGERY A
TAYLOR
5¢ RED VIOLET
ON WHITE
(35L3 - L8)



FORGERY A
TAYLOR
5¢ RED
ON WHITE
(35L3 - L8)

CARNES' CITY LETTER EXPRESS



FORGERY A
TAYLOR
5¢ LIGHT ORANGE
ON WHITE
(35L3 - L8)



FORGERY A
TAYLOR
5¢ YELLOW ORANGE
ON WHITE
(35L3 - L8)



FORGERY A
TAYLOR
5¢ YELLOW
ON WHITE
(35L3 - L8)



FORGERY A
TAYLOR
5¢ OLIVE
ON WHITE
(35L3 - L8)



FORGERY A
TAYLOR
5¢ VIOLET BROWN
ON WHITE
(35L3 - L8)



FORGERY A
TAYLOR
5¢ DARK GREEN
ON WHITE
(35L3 - L8)



FORGERY A
TAYLOR
5¢ GREEN
ON GRAY
(35L3 - L8)



FORGERY A
TAYLOR
5¢ LIGHT GREEN
ON WHITE
(35L3 - L8)



FORGERY A
TAYLOR
5¢ YELLOW GREEN
ON WHITE
(35L3 - L8)



FORGERY A
TAYLOR
5¢ GREEN
ON OFF-WHITE
(35L3 - L8)

Taylor forgeries generally are without cancellations, but there are some examples known with them. It is unclear if these were added to the stamps by Taylor himself, or if someone else is responsible for these fake cancels.



FORGERY A
TAYLOR
5¢ BLACK
ON WHITE
(35L3 - L8)
W/ FAKE HANDSTAMP

CARNES' CITY LETTER EXPRESS

Two more forgeries have been in circulation. The first of these two has a very crude drawn bear and can as such be identified as a fake. It is known in multiples, with tête-bêche pairs.



FORGERY B
5¢ BLACK
ON WHITE
(35L6)



FORGERY B
5¢ BLUE
ON WHITE
(35L7)



FORGERY B
5¢ RED
ON WHITE
(35L8)



FORGERY B
5¢ RED
ON WHITE
BLOCK OF SIX
TÊTE-BÊCHE
(35L8)

CARNES' CITY LETTER EXPRESS

This last forgery is a more modern production, and is similar to Taylor's design and colors. Unlike Taylor's forgery, the bear on this design does have a tail, and is one way to differentiate the two.



UNLISTED FORGERY
MODERN
5¢ SILVER
ON BRIGHT RED SC
(35L3 - L8)



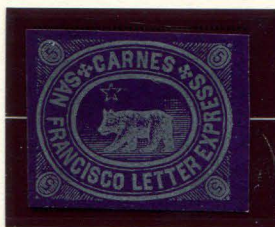
UNLISTED FORGERY
MODERN
5¢ SILVER
ON BRIGHT PINK SC
(35L3 - L8)



UNLISTED FORGERY
MODERN
5¢ SILVER
ON LIGHT GREEN SC
(35L3 - L8)



UNLISTED FORGERY
MODERN
5¢ SILVER
ON BLACK SC
(35L3 - L8)



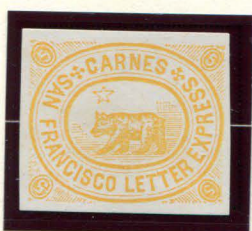
UNLISTED FORGERY
MODERN
5¢ SILVER
ON PURPLE SC
(35L3 - L8)



UNLISTED FORGERY
MODERN
5¢ GOLD
ON VIOLET SC
(35L3 - L8)



UNLISTED FORGERY
MODERN
5¢ GOLD
ON BLUE GREEN SC
(35L3 - L8)



UNLISTED FORGERY
MODERN
5¢ YELLOW ORANGE
ON WHITE
(35L3 - L8)



UNLISTED FORGERY
MODERN
5¢ BLACK
ON PINKISH
(35L3 - L8)