

G. CARTER'S DESPATCH

George Carter worked as a tobacconist in Philadelphia. In 1848, he opened his local post from within his store. The post delivered mail within the Old City of Philadelphia, and ran for about three years.

Carter's small paid stamps are similar to the ones issued by Blood's Despatch at around the same time. These stamps are known in six identifiable plate varieties, and on wove or vertically laid paper/



36L1 : GENUINE
2¢ BLACK ON WHITE
PLATE VARIETY 1
PEN STROKE CANCEL



36L1 : GENUINE
2¢ BLACK ON WHITE
PLATE VARIETY 3
PEN STROKE CANCEL



36L1 : GENUINE
2¢ BLACK ON WHITE
PLATE VARIETY 6
PEN STROKE CANCEL



36L1 : 2¢ BLACK ON WHITE
PLATE VARIETY 6
GENUINE ON COVER
MANUSCRIPT PENSTRIKE CANCEL
BLACK "G. CARTER'S PAID" CIRCULAR HANDSTAMP
WITH
BLUE PHILADELPHIA 5¢ CDS HANDSTAMP
MAY 16, (1849)

The cover above was delivered to the Philadelphia Post Office by G. Carter's Despatch, and delivered from there to Hamburg, Pennsylvania by the government postal service.

G. Carter's 2¢ delivery rate was paid by the adhesive stamp, which can be identified as plate variety 6. Carter also stamped this cover with his circular "PAID" handstamp, which listed his "90 N. Fifth St." address. This handstamp is illustrated on page 68 of the *American Stampless Cover Catalog* Volume 11.

G. CARTER'S DESPATCH

The cover below was delivered to the Philadelphia Post Office by G. Carter's Despatch, and delivered from there to Worcester, Massachusetts by the government postal service.

G. Carter's 2¢ delivery rate was paid by the adhesive stamp, which can be identified as plate variety 6. Carter also stamped this cover with his circular "PAID" handstamp, which listed his "90 N. Fifth St." address. This handstamp is illustrated on page 68 of the *American Stampless Cover Catalog* Volume II.



36L1 : 2¢ BLACK ON WHITE
 PLATE VARIETY 6
 GENUINE ON COVER
 MANUSCRIPT "X" CANCEL
 BLACK "G. CARTER'S PAID" CIRCULAR HANDSTAMP
 WITH
 BLUE PHILADELPHIA 5¢ CDS HANDSTAMP
 MARCH 3 (CIRCA 1849-1850)

**WORCESTER
 MACHINE CARD
 MANUFACTORY.**

The subscribers are manufacturing a superior article of all
 kinds of

MACHINE CARD CLOTHING,

At their WELL KNOWN stand,
**Over J. Pratt & Co's Iron Store,
 No. 11 Washington Square,
 T. K. EARLE & CO.**

EDWARD EARLE,
 TIMOTHY K. EARLE.

The cover is addressed to T.K. Earle & Co.,
 a machine card manufacturing company.

AT LEFT:
 WORCESTER MACHINE CARD MANUFACTORY
 T.K. EARLE & CO.

ADVERTISEMENT FROM
 THE WORCESTER ALMANAC, DIRECTORY,
 AND BUSINESS ADVERTISER, 1850

G. CARTER'S DESPATCH

Of all the forgeries, J. W. Scott's design is the only one that kept both the apostrophe in "CARTER'S" and the period after "PAID", but instead it is missing the period after the "G". The "PAID" is also taller than in the originals.



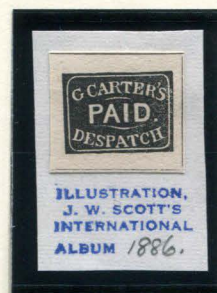
FORGERY A
SCOTT
2c BLACK
ON WHITE
(36L1)



FORGERY A
SCOTT
2c BLACK
ON BUFF
(36L1)



FORGERY A
SCOTT - ALBUM CUT
2c BLACK
ON WHITE
(36L1)



FORGERY A
SCOTT - ALBUM CUT
2c BLACK
ON WHITE
(36L1)

George Hussey's forgery is noticeable by the centering of "G. CARTERS", which is more to the right with the "G" being further away from the border than in any other design.

His stamps were printed in at least two different settings, with the later setting being of a weaker printing and having larger margins between the stamps. The first setting has at least four different positions, which can be seen on the two strips of three here: the bottom two positions on the first strip are the same as the top two on the other strip. The later setting has at least six positions, which are shown on the strip of six.



FORGERY B
HUSSEY - SETTING 1
2c BLACK
ON WHITE
(36L1)



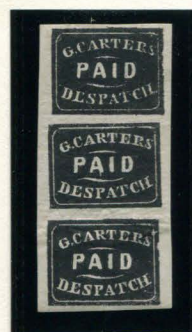
FORGERY B
HUSSEY - SETTING 2
2c BLACK
ON WHITE
(36L1)



FORGERY B
HUSSEY - (PROOF)
2c BLACK
ON BLUE
(36L1)



FORGERY B
HUSSEY - SETTING 1
2c BLACK
ON WHITE
STRIP OF THREE
(36L1)



FORGERY B
HUSSEY - SETTING 1
2c BLACK
ON WHITE
STRIP OF THREE
(36L1)



FORGERY B
HUSSEY - SETTING 2
2c BLACK
ON WHITE
STRIP OF SIX
(36L1)

G. CARTER'S DESPATCH

The "PAID" in S. A. Taylor's forgery is the smallest of all the forgeries, and the spacing of the word has the "P" and "A" close to each other while the "I" and "D" are further apart.



FORGERY C
TAYLOR - FORM 3
2c BLACK
ON BRIGHT GREEN SC
(36L1)



FORGERY C
TAYLOR - FORM 3
2c BLACK
ON LIGHT BLUE SC
(36L1)



FORGERY C
TAYLOR - FORM 3
2c BLACK
ON MAGENTA SC
(36L1)



FORGERY C
TAYLOR - FORM 6
2c BLUE
ON WHITE
(36L1)



FORGERY C
TAYLOR - FORM 6
2c BLUE
ON BLUE
(36L1)



FORGERY C
TAYLOR - FORM 6
2c BLUE
ON PINK
(36L1)



FORGERY C
TAYLOR - FORM AA3
2c GOLD
ON GREEN SC
(36L1)



FORGERY C
TAYLOR - FORM AA3
2c GOLD
ON BRIGHT BLUE SC
(36L1)



FORGERY C
TAYLOR - FORM AA3
2c GOLD
ON BRIGHT PURPLE SC
(36L1)



FORGERY C
TAYLOR - FORM AA3
2c GOLD
ON MAGENTA SC
(36L1)



FORGERY C
TAYLOR - FORM AA3
2c GOLD
ON PALE VIOLET SC
(36L1)



FORGERY C
TAYLOR - FORM AA11
2c RED ORANGE
ON WHITE
(36L1)



FORGERY C
TAYLOR - FORM AA11
2c BROWN
ON WHITE
(36L1)



FORGERY C
TAYLOR - FORM AA11
2c CHOCOLATE
ON WHITE
(36L1)



FORGERY C
TAYLOR
2c BLACK
ON WHITE
(36L1)



FORGERY C
TAYLOR
2c BLUE (SHADE)
ON WHITE
(36L1)

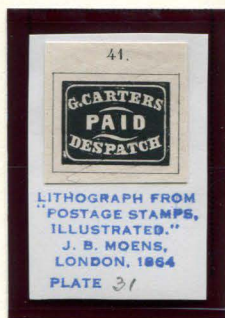
G. CARTER'S DESPATCH

Of the next two designs, the first was made by an unknown forger. It can be identified by the very small lettering of "G. CARTERS".

The other forgery was designed by J. B. Moens for his catalogue. In this design, the lettering of both "G. CARTER" and "DESPATCH" is thicker than in any other forgery.



FORGERY D
2¢ BLACK
ON WHITE
(36L1)



FORGERY E
MOENS - ALBUM CUT
2¢ BLACK
ON WHITE
(36L1)



FORGERY E
MOENS
2¢ BLACK
ON WHITE
(36L1)