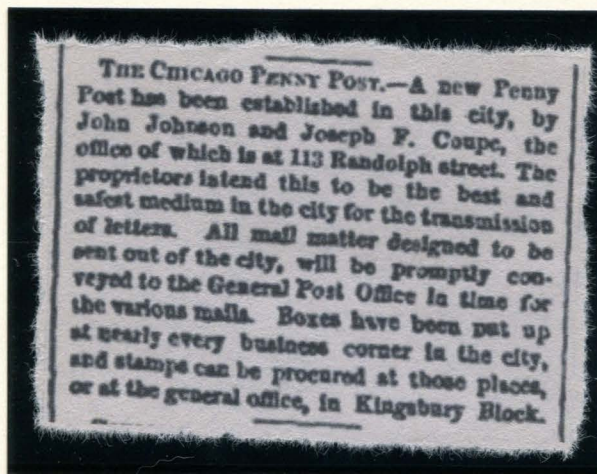


CHICAGO PENNY POST

John Johnson and Joseph Coupe started this local post in the fall of 1862, with an announcement in the Chicago Tribune. They handled local letter delivery, and delivery of out-of-town letter to the post office. Cancellations on this stamp read "Edward T. Cooke, Supt." The post lasted only a year before closing in 1863.



38L1
GENUINE
1¢ ORANGE BROWN
ON WHITE
POSITION 10



BUSINESS ANNOUNCEMENT
CHICAGO TRIBUNE, OCTOBER 18, 1862

CHICAGO PENNY POST

This post's stamp was reprinted by George Hussey. According to the records of Thomas Wood, Hussey's engraver, seven thousand "Chicago Penny Post" reprints were produced by June, 1866. These reprints come in many shades, in attempts to get close to the orange-brown color of the original.



REPRINT
HUSSEY
1¢ ORANGE RED
ON WHITE
(38L1)



REPRINT
HUSSEY
1¢ RED ORANGE
ON WHITE
(38L1)



REPRINT
HUSSEY
1¢ RED ORANGE
ON WHITE
"SPECIMEN" OVERPRINT
(38L1)



REPRINT
HUSSEY
1¢ ORANGE
ON WHITE
(38L1)



REPRINT
HUSSEY
1¢ YELLOW ORANGE
ON WHITE
(38L1)



REPRINT
HUSSEY
1¢ BROWN ORANGE
ON BUFF
(38L1)



REPRINT
HUSSEY
1¢ ORANGE BROWN
ON WHITE
(38L1)



REPRINT
HUSSEY
1¢ BROWN
ON WHITE
(38L1)



REPRINT
HUSSEY
1¢ BISTRE BROWN
ON WHITE
(38L1)



REPRINT
HUSSEY
1¢ BROWN GRAY
ON WHITE
(38L1)



REPRINT
HUSSEY
1¢ ORANGE
ON BUFF
(38L1)



REPRINT
HUSSEY
1¢ BROWN ORANGE
ON BUFF
(38L1)



REPRINT
HUSSEY
1¢ ORANGE BROWN
ON BUFF
(38L1)



REPRINT
HUSSEY
1¢ BROWN ORANGE
ON OFF-WHITE
(38L1)

CHICAGO PENNY POST



REPRINT
HUSSEY
1¢ ORANGE BROWN (SHADE)
ON WHITE WOVE
FULL SHEET OF TWENTY-FIVE
(38L1)

CHICAGO PENNY POST



REPRINT
HUSSEY
1¢ ORANGE BROWN (SHADE)
ON WHITE WOVE
FULL SHEET OF TWENTY-FIVE
(38L1)

CHICAGO PENNY POST



REPRINT
HUSSEY
1¢ ORANGE BROWN (SHADE)
ON WHITE WOVE
FULL SHEET OF TWENTY-FIVE
(38L1)

CHICAGO PENNY POST



REPRINT
HUSSEY
1¢ ORANGE BROWN (SHADE)
ON WHITE WOVE
FULL SHEET OF TWENTY-FIVE
(38L1)

CHICAGO PENNY POST



REPRINT
HUSSEY
1¢ ORANGE BROWN (SHADE)
ON WHITE
BLOCK OF TEN
(38L1)



REPRINT
HUSSEY
1¢ ORANGE BROWN (SHADE)
ON WHITE
STRIP OF FIVE
(38L1)



REPRINT
MODERN
1¢ BROWN
ON BUFF
(38L1)



REPRINT
MODERN
1¢ RED ORANGE
ON WHITE
TÊTE-BÊCHE
(38L1)



REPRINT
MODERN
1¢ PINK
ON WHITE
(38L1)

CHICAGO PENNY POST

All the forgeries can be told apart by the bees above the beehive. They all have different amounts and positions than the original stamps. The corner ornaments vary greatly as well amongst the forgeries.



FORGERY A
MOENS
1¢ PINK
ON WHITE
(38L1)



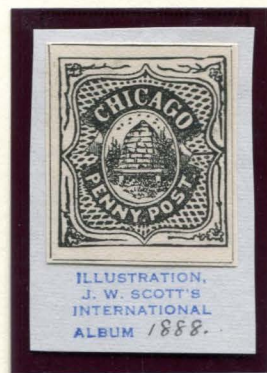
FORGERY A
MOENS
1¢ ORANGE YELLOW
ON WHITE
(38L1)



FORGERY A
MOENS
1¢ BRIGHT YELLOW
ON WHITE
(38L1)



FORGERY B
SCOTT - ALBUM CUT
1¢ BLACK
ON WHITE
(38L1)



FORGERY B
SCOTT - ALBUM CUT
1¢ BLACK
ON WHITE
(38L1)



FORGERY B
SCOTT
1¢ YELLOW ORANGE
ON WHITE
(38L1)



FORGERY B
SCOTT
1¢ LIGHT ORANGE
ON WHITE
(38L1)



FORGERY B
SCOTT
1¢ ORANGE
ON WHITE
(38L1)



FORGERY B
SCOTT
1¢ RED ORANGE
ON WHITE
(38L1)

CHICAGO PENNY POST



FORGERY C
1¢ PINKISH ORANGE
ON WHITE
(38L1)



FORGERY C
1¢ ORANGE
ON WHITE
(38L1)



FORGERY C
1¢ ORANGE BROWN
ON WHITE
(38L1)



FORGERY C
1¢ BROWN
ON WHITE
(38L1)



FORGERY C
1¢ PINKISH ORANGE
ON WHITE
TÊTE-BÊCHE PAIR
(38L1)



FORGERY D
TAYLOR - FORM 5
1¢ RED
ON WHITE
(38L1)



FORGERY D
TAYLOR - FORM 5
1¢ RED
ON YELLOW SC
(38L1)



FORGERY D
TAYLOR - FORM 5
1¢ RED
ON GRAY VIOLET SC
(38L1)



FORGERY D
TAYLOR - FORM 6
1¢ YELLOW
ON WHITE
(38L1)



FORGERY D
TAYLOR - FORM 6
1¢ PURPLE
ON WHITE
(38L1)



FORGERY D
TAYLOR - FORM 6
1¢ PURPLE
ON YELLOW
(38L1)

CHICAGO PENNY POST



FORGERY D
TAYLOR - FORM 15
1¢ BLACK
ON VIOLET BLUE
(38L1)



FORGERY D
TAYLOR - FORM 15
1¢ BLACK
ON GRAY GREEN
(38L1)



FORGERY D
TAYLOR - FORM 15
1¢ BLACK
ON ORANGE BUFF
(38L1)



FORGERY D
TAYLOR - FORM 15
1¢ ULTRAMARINE
ON WHITE H LAID
(38L1)



FORGERY D
TAYLOR - FORM 15
1¢ ULTRAMARINE
ON WHITE V LAID
(38L1)



FORGERY D
TAYLOR - FORM 15
1¢ BLACK
ON WHITE V LAID
(38L1)



FORGERY D
TAYLOR - FORM 21
1¢ VIOLET
ON BLUE
(38L1)



FORGERY D
TAYLOR - FORM AA11
1¢ RED ORANGE
ON WHITE
(38L1)



FORGERY D
TAYLOR - FORM AA11
1¢ BROWN
ON WHITE
(38L1)



FORGERY D
TAYLOR - FORM AA11
1¢ CHOCOLATE
ON WHITE
(38L1)



FORGERY D
TAYLOR - FORM S16
1¢ ORANGE BROWN
ON WHITE
(38L1)



FORGERY D
TAYLOR - FORM S16
1¢ VIOLET BROWN
ON WHITE
(38L1)

CHICAGO PENNY POST



FORGERY D
TAYLOR
1¢ BLUE VIOLET
ON WHITE
(38L1)



FORGERY D
TAYLOR
1¢ DARK BLUE
ON WHITE
(38L1)



FORGERY D
TAYLOR
1¢ BLUE
ON WHITE
(38L1)



FORGERY D
TAYLOR
1¢ LIGHT BLUE
ON WHITE
(38L1)



FORGERY D
TAYLOR
1¢ LIGHT BLUE
ON PINKISH
(38L1)



FORGERY D
TAYLOR
1¢ GREENISH BLUE
ON WHITE
(38L1)



FORGERY D
TAYLOR
1¢ GRAY BLUE
ON WHITE
(38L1)



FORGERY D
TAYLOR
1¢ GRAY GREEN
ON WHITE
(38L1)



FORGERY D
TAYLOR
1¢ GREEN
ON WHITE
(38L1)



FORGERY D
TAYLOR
1¢ ORANGE
ON WHITE
(38L1)



FORGERY D
TAYLOR
1¢ PINKISH ORANGE
ON WHITE
(38L1)



FORGERY D
TAYLOR
1¢ RED BROWN
ON WHITE
(38L1)



FORGERY D
TAYLOR
1¢ ORANGE BROWN
ON CREAM
(38L1)



FORGERY D
TAYLOR
1¢ BROWN
ON CREAM
(38L1)

CHICAGO PENNY POST



FORGERY D
TAYLOR
1c HOT PINK
ON WHITE
(38L1)



FORGERY D
TAYLOR
1c PINK
ON WHITE
(38L1)



FORGERY D
TAYLOR
1c LIGHT PINK
ON WHITE
(38L1)



FORGERY D
TAYLOR
1c PINK
ON LIGHT BLUE GREEN
(38L1)



FORGERY D
TAYLOR
1c LIGHT VIOLET
ON WHITE
(38L1)



FORGERY D
TAYLOR
1c VIOLET
ON WHITE
(38L1)



FORGERY D
TAYLOR
1c DARK VIOLET
ON WHITE
(38L1)



FORGERY D
TAYLOR
1c RED
ON WHITE V LAID
(38L1)



FORGERY D
TAYLOR
1c RED
ON CREAM V LAID
(38L1)



FORGERY D
TAYLOR
1c RED BROWN
ON GRAY BLUE H LAID
(38L1)



FORGERY D
TAYLOR
1c RED BROWN
ON GRAY BLUE V LAID
(38L1)