

# CITY DESPATCH POST

When London native Henry Thomas Windsor visited the United States in 1841, he was unimpressed with the inefficacy of the post office. He spoke with his friend, New York stockbroker Alexander M. Greig, about his desire to start a penny post. The two began the business using Greig's name, because Windsor believed that the public would be more likely to do business with an American named company.

The post opened in early February of 1842. Their stamps were the first adhesive stamps issued in the United States. It is believed that these stamps were engraved and printed by Rawdon, Wright & Hatch. They were printed in sheets of forty-two subjects and featured a bust of George Washington.



PORTRAIT OF  
ALEXANDER M. GREIG  
FROM SIEGEL SALE 999



40L1  
GENUINE  
3¢ BLACK  
ON GRAYISH  
PF CERT #536823

The success of their business inspired the government to purchase the post. Keeping Greig as an agent, the post ran under the government as the United States City Despatch Post for three years. During this time, Greig's honored the use of his remaining local stamps for official postage payment. The 3¢ rate paid the 2¢ drop letter rate plus the 1¢ carrier fee.

The United States City Despatch issued its own carrier stamps made with a modified design of the local stamps - the carrier stamps read "United States City Despatch Post" and featured new, shorter ornaments within the border oval.

In mid 1845, the post was discontinued by the government, who could not compete with private local posts in the area.

# CITY DESPATCH POST

The government carrier service United States City Despatch Post was discontinued in 1845. Abraham B. Mead, a former US letter carrier, took over the post under the name of Mead's Post Office City Despatch. Mead continued to use Greig's stamp plate, altering it only to change the price from "three" to "two".

Mead used the same cancelling device used by Grieg - "FREE" in a double lined frame. This handstamp is known in both red and black.



40L2  
GENUINE  
2¢ BLACK  
ON GREEN SC  
MANUSCRIPT CANCEL



40L2  
GENUINE  
2¢ BLACK  
ON GREEN SC  
BLACK FRAMED "FREE"



40L2 - GENUINE  
2¢ BLACK ON GREEN SC  
RED FRAMED "FREE"  
ON PIECE  
WITH NEW YORK 5¢ CDS

In spring 1847 Mead sold the post to Cummings & Wright who briefly ran the post alongside their own Cummings City Post.

# CITY DESPATCH POST

The cover featured here was mailed within New York, postage paid with a Mead's 2¢ adhesive stamp. The stamp is cancelled with a red "FREE" handstamp and a second handstamp is applied to the right of the stamp. A red City Despatch Post Office CDS also marks the front of the cover, dated April 8 (1847).



40L2 : 2¢ BLACK ON GREEN SC  
GENUINE USE ON COVER  
RED "FREE" HANDSTAMP CANCELLATION  
CITY DESPATCH POST OFFICE CDS  
APRIL 8 (1847)  
PF# 2887

This letter was sent by Lawrence Labree, a writer and literary editor. At the time this letter was sent, Labree was responsible for editing a literary anthology called *The New York Illustrated Magazine of Literature and Art*. This anthology was published by William Taylor & Co.

The contents of the letter regard Labree attempting to contact James Lawson. He writes that he visited Lawson's office on Wall Street several times but was unable to find him. He then asks Lawson to write to him with a place and time to meet, and to address that letter to Henry Taylor at 2 Astor House, where *The New York Illustrated Magazine of Literature and Art* was published.

Lawson was known to have held William Gilmore Simms's story "The Maroon", which was published in *The New York Illustrated Magazine of Literature and Art* around this time. Another recorded letter, written by Simms and addressed to Labree in March of 1847, asks Labree to pay Lawson a balance \$45 due on the drafts for "The Maroon". It is possible that the letter above is in response to this request.

# CITY DESPATCH POST

Sometime in spring of 1847, Mead sold the City Despatch Post to Alfred H. Cummings and Robert Wright. When *exactly* the transfer took place is uncertain, but it's known that Cummings & Wright were running the post by at least May of 1847.

Cummings & Wright used the remaining stock of Mead's black on green stamps, and also issued a new variety of the same design on pink paper. They ran this post alongside their own Cumming's City Post and used the City Despatch Post framed "Free" handstamp for both operations.

The cover below is an example of a "Mead's" City Despatch Post stamp used during the Cummings & Wright period. The stamp is cancelled by a manuscript "x" penstroke, and is tied to the cover by a 10¢ October 13th New York integral-rate circular datestamp.



40L2 : 2¢ BLACK ON GREEN SC  
GENUINE USE ON COVER  
MAILED WITH 10¢ RED NEW YORK CDS  
OCTOBER 13, (1847)  
PF# 529631

By the end of October, 1847, the post changed hands once again. Cummings & Wright turned the operation of the City Despatch Post over to Charles Cole.

# CITY DESPATCH POST

In October of 1847, Charles Cole took over the City Despatch Post. During his proprietorship, Cole altered the stamp plate; adding a "C" on each side of Washington's portrait. These "C"s were probably etched by hand, and stamps are known with missing, inverted, or sideways "C"s.

Cole issued his stamps in four colors: black on green glazed; black on grayish; black on vermilion glazed; and black on yellow buff. Like his predecessors, Cole's City Despatch Post cancelled stamped with the framed "Free" handstamp. Additional new cancels used by Cole's included a "PAID" handstamp and a black grid of four bars.



40L4  
GENUINE  
2¢ BLACK  
ON GREEN SC  
PAID HANDSTAMP



40L5  
GENUINE  
2¢ BLACK  
ON GRAYISH  
MANUSCRIPT "CC"



40L6  
GENUINE  
2¢ BLACK  
ON VERMILION SC  
BLACK 4 BARS



40L4B : 2¢ BLACK ON GREEN SC  
HAND ETCHED SIDEWAYS "C" AT LEFT VARIETY  
RED FRAMED "FREE" HANDSTAMP CANCEL  
GENUINE USE ON COVER  
RED "PO CITY DESPATCH POST" CDS  
APRIL 30, (1850)  
PF# 0235848 (1991) & # 0350501 (2000)

# CITY DESPATCH POST



4014 : 2¢ BLACK ON GREEN SC  
BLACK FRAMED "FREE HANDSTAMP CANCEL  
GENUINE USE ON COVER  
RED "PO CITY DESPATCH POST" CDS  
5¢ RED NEW YORK INTEGRAL RATE CDS  
FEBRUARY 5, (1848)  
PF# 473484

4016 : 2¢ BLACK ON VERMILION SC  
BLACK "PAID" HANDSTAMP CANCEL  
GENUINE USE ON COVER  
BLACK "PO CITY DESPATCH POST" CDS  
OCTOBER 3, (1848)  
PF# 0317849



Cole ran the post for around three years. It is possible that Cole was also running or assisting another local post, which he turned his focus to around 1849. For whatever reason, the City Despatch Post was closed for good sometime in 1850.

# CITY DESPATCH POST

Greig's original 3¢ City Despatch Post stamp die was acquired by his grandson, Alexander Ayres. In 1892, Ayres loaned the die to a Dr. W.H. Mitchell to make copies for historical reference. Without Ayres permission, Mitchell also had a group of reprint proofs printed.

These first reprint proofs were printed on grayish white, orange, red, and green glazed papers. According to the Scott Catalogue, only four sets of these reprints were made.



40L1 - REPRINT  
3¢ BLACK  
ON GREEN SC  
PF CERT #55066



40L1 - REPRINT  
3¢ BLACK  
ON RED SC  
PF CERT #55067



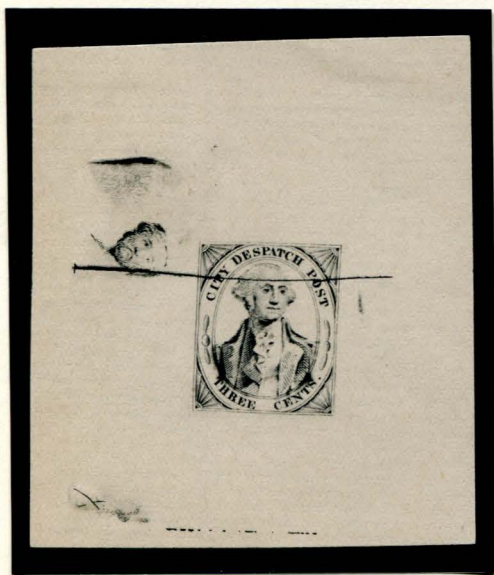
40L1 - REPRINT  
3¢ BLACK  
ON ORANGE SC  
PF CERT #55068



40L1 - REPRINT  
3¢ BLACK  
ON WHITE  
PF CERT #55069

Mitchell had sent the die to New York to make the reprints. At some point during the printing, the plate was badly cracked along the top.

At a later point, probably in the 1950s, the cracked die was used to pull a few additional proofs. Some of these proofs include a partial impression of another die appearing as a sideways face in the left margin. Some of these proofs were cleaned up with a "decorative" defacing line applied over the crack.

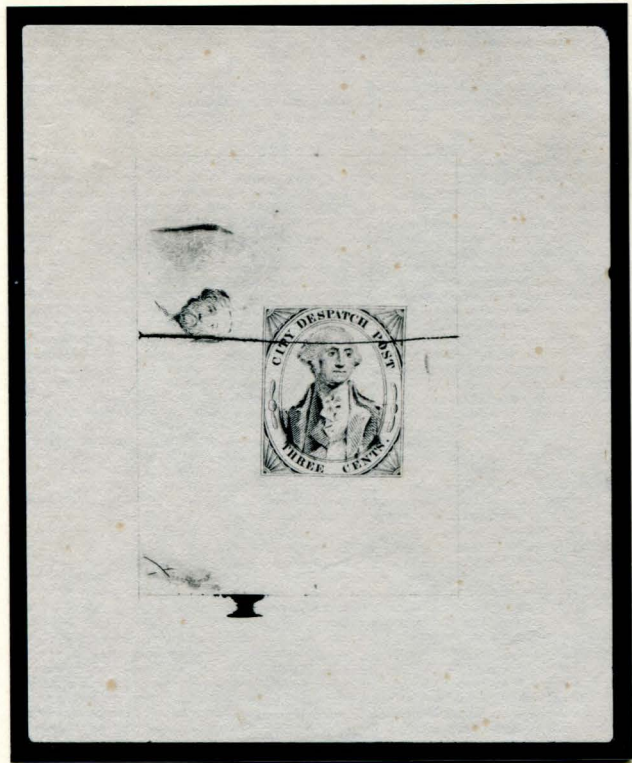


40L1 - REPRINT PROOF  
3¢ BLACK  
ON WHITE H LAID  
WITH ADDITIONAL SIDWAYS FACE

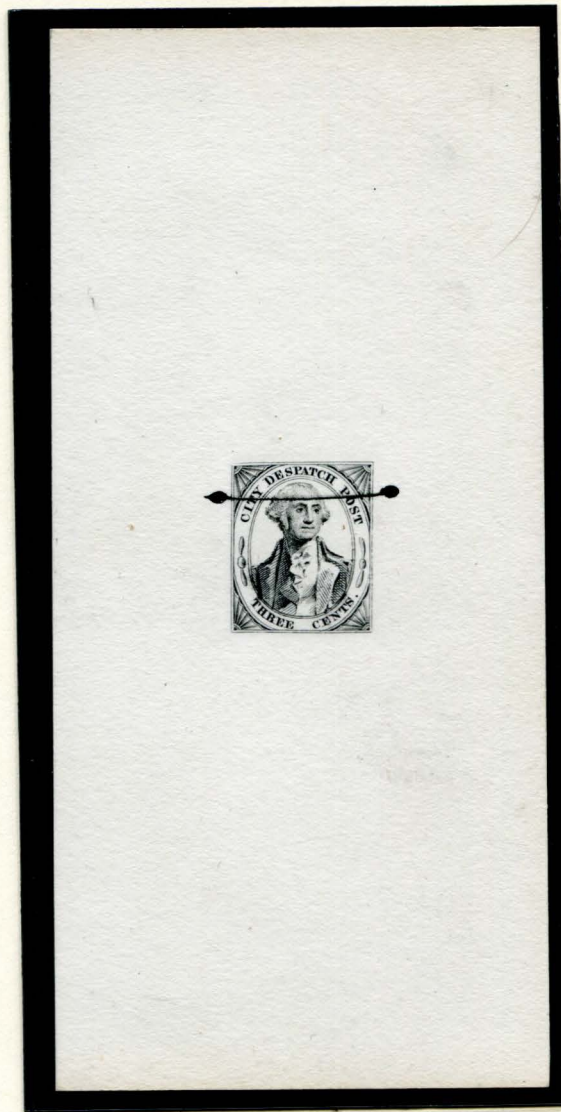


40L1 - REPRINT PROOF  
3¢ BLACK  
ON CREAM POROUS WOVE  
WITH DECORATIVE DEFACING LINE

# CITY DESPATCH POST



40L1 - REPRINT PROOF  
3c BLACK  
DIE SUNK ON WHITE H LAID  
WITH ADDITIONAL SIDEWAYS FACE



40L1 - REPRINT PROOF  
3c BLACK  
ON THICK WHITE CARD  
WITH DECORATIVE DEFACEING LINE

# CITY DESPATCH POST

All three of the original stamp designs had forgeries made based on them. Of Greig's stamp design, four different forgeries are known to exist. The first three were made by J. W. Scott, S. A. Taylor, and an unknown forger, and can all be identified as fakes due to the lack of a period after the word "CENTS". The fourth one is made by the master counterfeiter Jean de Sperati and is very difficult to tell apart from the real stamps.

Scott's and Taylor's forgeries are very similar, with both designs lacking the fine details. The right side of Washington's wig is too large, his eyes are too big, and the top of his head is too close to the inner oval, almost touching it. Additionally, Taylor's design can be told apart from Scott's in the lettering: The "C" of "CITY" is smaller, the crossbar of the "H" in "DESPATCH" is detached from the uprights, and the "P" in "POST" has an open top.

Scott's design has a variation in which breaks appeared at the bottom, under "EN" of "CENTS".



FORGERY A  
SCOTT  
3¢ BLACK  
ON GREEN SC  
(40L1)



FORGERY A  
SCOTT  
3¢ BLACK  
ON PINK SC  
(40L1)



FORGERY A  
SCOTT  
3¢ BLACK  
ON DULL PINK SC  
(40L1)



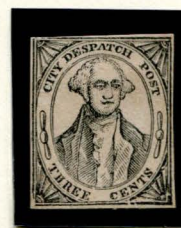
FORGERY A  
SCOTT  
3¢ BLACK  
ON GRAYISH SC  
(40L1)



FORGERY A VAR  
SCOTT  
3¢ BLACK  
ON WHITE  
(40L1)



FORGERY A VAR  
SCOTT  
3¢ BLACK  
ON CREAM  
(40L1)



FORGERY A VAR  
SCOTT  
3¢ BLACK  
ON BUFF  
(40L1)

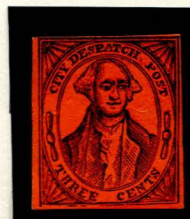
# CITY DESPATCH POST



FORGERY B  
TAYLOR - FORM 13  
3c BLACK  
ON SCARLET SC  
(40L1)



FORGERY B  
TAYLOR - FORM 13  
3c BLACK  
ON YELLOW SC  
(40L1)



FORGERY B  
TAYLOR - FORM 19  
3c BLACK  
ON VERMILION SC  
(40L1)



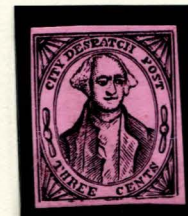
FORGERY B  
TAYLOR - FORM 19  
3c BLACK  
ON GREEN SC  
(40L1)



FORGERY B  
TAYLOR - FORM AB12  
3c BLACK  
ON VERMILION SC  
(40L1)



FORGERY B  
TAYLOR - FORM AB12  
3c BLACK  
ON LILAC SC  
(40L1)



FORGERY B  
TAYLOR - FORM AB12  
3c BLACK  
ON PINK SC  
(40L1)



FORGERY B  
TAYLOR - FORM AB15  
3c BLACK  
ON GRAY BLUE  
(40L1)



FORGERY B  
TAYLOR - FORM AB15  
3c BLACK  
ON VERMILION SC  
(40L1)



FORGERY B  
TAYLOR - FORM AB15  
3c BLACK  
ON GREEN SC  
(40L1)



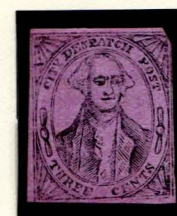
FORGERY B  
TAYLOR - FORM AB17  
3c BLACK  
ON ORANGE SC  
(40L1)



FORGERY B  
TAYLOR - FORM AB17  
3c BLACK  
ON BRIGHT GREEN SC  
(40L1)



FORGERY B  
TAYLOR - FORM AB17  
3c BLACK  
ON LILAC SC  
(40L1)



FORGERY B  
TAYLOR - (FORM AB17)  
3c BLACK  
ON VIOLET SC  
(40L1)

# CITY DESPATCH POST



FORGERY B  
TAYLOR  
3c BLACK  
ON WHITE H LAID  
(40L1)



FORGERY B  
TAYLOR  
3c BLACK  
ON BUFF  
(40L1)



FORGERY B  
TAYLOR  
3c BLACK  
ON GOLD YELLOW SC  
(40L1)



FORGERY B  
TAYLOR  
3c BLACK  
ON LIGHT BLUE GREEN SC  
(40L1)

Unlike the previous two designs, in the forgery made by the unknown designer, Washington looks a lot more like his portrait used in the genuine stamp design. But there are still several ways to tell this forgery apart. Most notably are the much smaller side ornaments, which are too high up.

This forgery is also known to occasionally have a fake boxed "FREE" cancel on it.



FORGERY C  
3c BLACK  
ON WHITE  
(40L1)



FORGERY C  
3c BLACK  
ON VERMILION SC  
(40L1)



FORGERY C  
3c BLACK  
ON GREEN SC  
(40L1)  
FAKE BOXED "FREE" CANCEL



FORGERY C  
3c BLACK  
ON PALE PINK SC  
(40L1)



FORGERY C  
3c BLACK  
ON PALE PINK SC  
(40L1)  
FAKE BOXED "FREE" CANCEL



FORGERY C  
3c BLACK  
ON MAROON SC  
(40L1)



FORGERY C  
3c BLACK  
ON PURPLE SC  
(40L1)

# CITY DESPATCH POST

The following forgeries were made by Jean de Sperati, who used a special photo-lithography technique to make almost identical copies of the real stamps. This makes them very difficult to identify as the fakes they are, but there are still a few ways to tell them apart. If the margins are large enough, you can notice an extra double frame line below the stamp, and an extra single frame line to the right of the stamp. These are most noticeable on the "die proofs", which de Sperati usually signed.

Some other signs of these forgeries are: a constant smudge on the two border lines on the left side, near the top of the bottom left ornament; a weak, broken inner border line between "THREE" and "CENTS"; and a dark flaw near the top of the bottom part of the right ornament.

Jean de Sperati also often added forged handstamps on his forgeries. In this case he made fakes of the boxed "FREE" cancel and the circular "City Despatch Post" date stamp.



FORGERY D  
DE SPERATI  
SIGNED DIE PROOF  
3¢ BLACK  
ON WHITE  
(40L1)



FORGERY D  
DE SPERATI  
SIGNED DIE PROOF  
3¢ BLACK  
ON GRAYISH  
(40L1)



FORGERY D  
DE SPERATI  
3¢ BLACK  
ON GRAYISH  
(40L1)



FORGERY D  
DE SPERATI  
3¢ BLACK  
ON GRAYISH  
(40L1)  
ON PIECE W/ FAKE BOXED "FREE" CANCEL  
AND FAKE "CITY DESPATCH POST" DATE STAMP

# CITY DESPATCH POST

Only one forgery of Mead's two cent design is known to exist, made by J. W. Scott. This forgery is the exact same design he used for his replication of Greig's three cent stamp, except for it reading "TWO" now. This means the easiest way to tell the forgery apart is still by the missing period after "CENTS".



FORGERY A  
SCOTT  
2c BLACK  
ON GREEN SC  
(40L2)



FORGERY A  
SCOTT  
2c BLACK  
ON DULL GREEN SC  
(40L2)



FORGERY A  
SCOTT  
2c BLACK  
ON GREEN SC  
(40L2)  
WITH FAKE HANDSTAMPS

Scott also made forgeries of Cole's two cent stamps, again using the same design used for the Greig's and Mead's forgeries, but with the addition of the two "C"s to the left and right of Washington.

In addition to the two cent forgery, Scott also made a three cent bogus with the "C"s surrounding Washington. Cole never released stamps in this value.



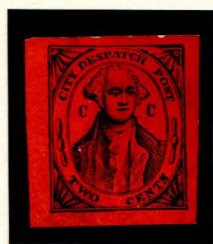
FORGERY A  
SCOTT  
2c BLACK  
ON GREEN SC  
(40L4)



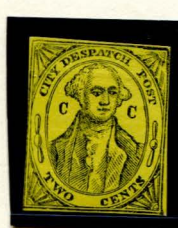
FORGERY A  
SCOTT  
2c BLACK  
ON WHITE  
(40L5)



FORGERY A  
SCOTT  
2c BLACK  
ON CREAM  
(40L8)



FORGERY A  
SCOTT  
2c BLACK  
ON VERMILION SC  
(40L6)



FORGERY A  
SCOTT  
2c BLACK  
ON YELLOW SC  
(40L8)



FORGERY AA  
SCOTT  
3c BLACK  
ON PALE BLUE SC  
(40L5)



FORGERY AA  
SCOTT  
3c BLACK  
ON GRAYISH SC  
(40L5)

# CITY DESPATCH POST

Taylor's forgery of Cole's "City Despatch Post" stamp doesn't look much like the genuine design, and was probably rather based on the illustration published in J. B. Moens' 1864 catalogue. It lacks the circular parts in the corners, and is also completely missing both side ornaments. The drawing of George Washington is very basic, with hardly any detail or shading, and there is an extra border around the stamp, missing the top right corner.

Other forgeries are similar to this design, but Taylor's forgery is the only one with a period after "POST". Additionally, also unique to this forgery is a break in the inner oval under the "T" of "POST". Various other flaws appear on different printings of this forgery, but are not consistent.



FORGERY B  
TAYLOR - FORM 3  
2c BLACK  
ON BRIGHT GREEN SC  
(40L4 - L8)



FORGERY B  
TAYLOR - FORM 3  
2c BLACK  
ON LIGHT BLUE SC  
(40L4 - L8)



FORGERY B  
TAYLOR - FORM 3  
2c BLACK  
ON MAGENTA SC  
(40L4 - L8)



FORGERY B  
TAYLOR - FORM 13  
2c BLACK  
ON SCARLET SC  
(40L4 - L8)



FORGERY B  
TAYLOR - FORM 13  
2c BLACK  
ON YELLOW SC  
(40L4 - L8)



FORGERY B  
TAYLOR - FORM 18  
2c BLACK  
ON GRAY GREEN  
(40L4 - L8)



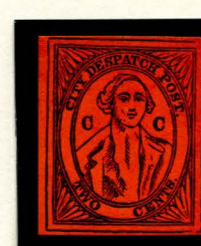
FORGERY B  
TAYLOR - FORM 18  
2c BLACK  
ON VIOLET BLUE  
(40L4 - L8)



FORGERY B  
TAYLOR - FORM 18  
2c ORANGE  
ON WHITE  
(40L4 - L8)



FORGERY B  
TAYLOR - FORM 19  
2c BLACK  
ON GREEN SC  
(40L4 - L8)



FORGERY B  
TAYLOR - FORM 19  
2c BLACK  
ON VERMILION SC  
(40L4 - L8)

# CITY DESPATCH POST



FORGERY B  
TAYLOR - FORM AA2  
2c ORANGE RED  
ON VIOLET PINK V LAID  
(40L4 - L8)



FORGERY B  
TAYLOR - FORM AA2  
2c ORANGE RED  
ON VIOLET PINK H LAID  
(40L4 - L8)



FORGERY B  
TAYLOR - FORM AA2  
2c ORANGE RED  
ON YELLOW GREENISH  
H LAID  
(40L4 - L8)



FORGERY B  
TAYLOR - FORM AA2  
2c ORANGE RED  
ON YELLOWISH H LAID  
(40L4 - L8)



FORGERY B  
TAYLOR - FORM AA2  
2c ORANGE RED  
ON BLUISH WHITE  
(40L4 - L8)



FORGERY B  
TAYLOR - FORM AA2  
2c ORANGE RED  
ON WHITE  
(40L4 - L8)



FORGERY B  
TAYLOR - FORM AA2  
2c ORANGE  
ON WHITE  
(40L4 - L8)



FORGERY B  
TAYLOR - FORM AA2  
2c RED ORANGE  
ON YELLOWISH  
(40L4 - L8)



FORGERY B  
TAYLOR - FORM AA5  
2c BLACK  
ON SALMON SC RIBBED  
W/ GOLD DIAMOND GRID  
OVERPRINT  
(40L4 - L8)



FORGERY B  
TAYLOR - FORM AA5  
2c BLACK  
ON GREEN SC  
(40L4 - L8)



FORGERY B  
TAYLOR - FORM AA5  
2c BLACK  
ON VERMILION SC  
(40L4 - L8)



FORGERY B  
TAYLOR - FORM AA5  
2c BLACK  
ON DARK RED VIOLET SC  
(40L4 - L8)



FORGERY B  
TAYLOR - FORM AA5  
2c BLACK  
ON LAVENDER SC  
(40L4 - L8)

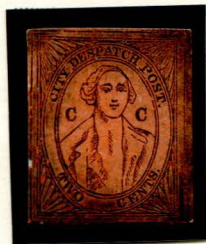


FORGERY B  
TAYLOR - FORM AA5  
2c BLACK  
ON VIOLET SC  
(40L4 - L8)



FORGERY B  
TAYLOR - FORM AA5  
2c BLACK  
ON PURPLE SC  
(40L4 - L8)

# CITY DESPATCH POST



FORGERY B  
TAYLOR - FORM AA6  
2c BLACK  
ON PEACH SC  
(40L4 - L8)



FORGERY B  
TAYLOR - FORM AA6  
2c BLACK  
ON VERMILION SC  
(40L4 - L8)



FORGERY B  
TAYLOR - FORM AA6  
2c BLACK  
ON ORANGE SC  
(40L4 - L8)



FORGERY B  
TAYLOR - FORM AA6  
2c BLACK  
ON GREEN SC  
(40L4 - L8)



FORGERY B  
TAYLOR - FORM AA6  
2c BLACK  
ON LIGHT BLUE SC  
(40L4 - L8)



FORGERY B  
TAYLOR - FORM AA6  
2c BLACK  
ON BLUE SC  
(40L4 - L8)



FORGERY B  
TAYLOR - FORM AA6  
2c BLACK  
ON VIOLET PINK  
(40L4 - L8)



FORGERY B  
TAYLOR - FORM AA10  
2c BROWN  
ON WHITE  
(40L4 - L8)



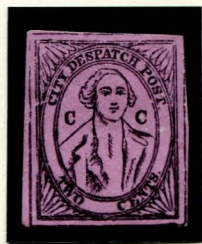
FORGERY B  
TAYLOR - FORM AA10  
2c BROWN  
ON YELLOW  
(40L4 - L8)



FORGERY B  
TAYLOR - FORM AA23  
2c LAVENDER  
ON WHITE H LAID  
(40L4 - L8)



FORGERY B  
TAYLOR - FORM AA23  
2c LAVENDER  
ON YELLOWISH H LAID  
(40L4 - L8)



FORGERY B  
TAYLOR - FORM AB13  
2c BLACK  
ON PINK VIOLET SC  
(40L4 - L8)



FORGERY B  
TAYLOR - FORM AB13  
2c BLACK  
ON DULL ORANGE SC  
(40L4 - L8)

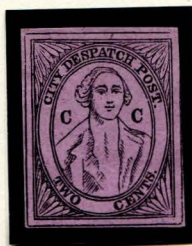


FORGERY B  
TAYLOR - (FORM AB13)  
2c BLACK  
ON VERMILION SC  
(BUFF BACK)  
(40L4 - L8)

# CITY DESPATCH POST



FORGERY B  
TAYLOR  
2c BLACK  
ON YELLOW  
(40L4 - L8)



FORGERY B  
TAYLOR  
2c BLACK  
ON LIGHT VIOLET  
(40L4 - L8)



FORGERY B  
TAYLOR  
2c BLACK  
ON PEACH  
(40L4 - L8)



FORGERY B  
TAYLOR  
2c GREEN  
ON WHITE  
(40L4 - L8)



FORGERY B  
TAYLOR  
2c LIGHT GREEN  
ON WHITE  
(40L4 - L8)



FORGERY B  
TAYLOR  
2c VIOLET  
ON WHITE  
(40L4 - L8)



FORGERY B  
TAYLOR  
2c VIOLET  
ON YELLOWISH  
(40L4 - L8)



FORGERY B  
TAYLOR  
2c BLACK  
ON WHITE H LAID  
(40L4 - L8)



FORGERY B  
TAYLOR  
2c BLACK  
ON WHITE  
(40L4 - L8)



FORGERY B  
TAYLOR  
2c PURPLISH BLACK  
ON WHITE  
(40L4 - L8)



FORGERY B  
TAYLOR  
2c BLACK  
ON DARK GREEN SC  
(40L4 - L8)



FORGERY B  
TAYLOR  
2c BLACK  
ON BLUE GREEN SC  
(40L4 - L8)



FORGERY B  
TAYLOR  
2c BLACK  
ON PALE BLUE GREEN SC  
(40L4 - L8)

# CITY DESPATCH POST



FORGERY B  
TAYLOR  
2c BLACK  
ON YELLOW ORANGE SC  
(40L4 - L8)



FORGERY B  
TAYLOR  
2c BLACK  
ON GOLD YELLOW SC  
(40L4 - L8)



FORGERY B  
TAYLOR  
2c BLACK  
ON BRIGHT YELLOW SC  
(40L4 - L8)



FORGERY B  
TAYLOR  
2c BLACK  
ON PALE YELLOW SC  
(40L4 - L8)



FORGERY B  
TAYLOR  
2c BLACK  
ON DULL BLUE SC  
(40L4 - L8)



FORGERY B  
TAYLOR  
2c BLACK  
ON LIGHT BLUE VIOLET SC  
(40L4 - L8)



FORGERY B  
TAYLOR  
2c BLACK  
ON PINK SC  
(40L4 - L8)

The next two designs are by unknown forgers. As with Taylor's design, both are based on Moens' 1864 catalogue illustration, and as such also lack the side ornaments and are missing the circular parts in the corners. To tell them apart, the first design is missing the crossbar in the "H" of "DESPATCH", while the other design has a break in the inner oval, under the "H" of "DESPATCH". This last design is very close to that of Moens' illustration, but Washington is more clearly drawn on this forgery, while very faintly on Moens' illustration.



FORGERY C  
2c BLACK  
ON GREEN SC  
(40L4)



FORGERY C  
2c BLACK  
ON PINK SC  
(40L6)



FORGERY C  
2c BLACK  
ON BROWN RED SC  
(40L6)



FORGERY E  
2c BLACK  
ON GRAY BLUE  
(40L5)  
WITH FAKE MS CANCEL AND  
FAKE PROPELLER HANDSTAMP