

CITY DISPATCH

Not much is known for certain about this New York City local. It is believed to be a successor to the City Despatch Post, after Charles Cole relinquished the post to Edward N. Barry around 1850. Barry ran the post until sometime around 1856.

Only about 15-20 authentic examples of the stamp for this post exist. Postal historians believe that it was first issued around 1846, and reissued later. They were not frequently used until after 1850. It is likely that Barry used this stamp instead of his successor's design because the C's applied to Cole's stamp design were no longer appropriate.



PHOTOCOPY
EXAMPLE OF STAMP
FROM SIEGEL AUCTION 958
(160LI)

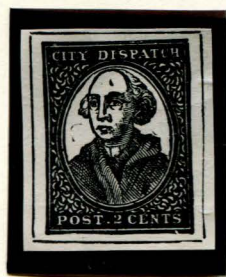


PHOTOCOPY
EXAMPLE OF HANDSTAMP
FROM SIEGEL AUCTION 896

CITY DISPATCH

While the genuine stamps depict George Washington in his uniform, with a clear outline of the coat's lapel above his right shoulder, all the forgeries have him wear what appears to be a much thicker coat, looking nothing like the uniform's coat, but more like a fur coat.

J. W. Scott's forgeries are based on his album illustrations. His design has a thick outer border, which bulges out even more at the bottom and in the bottom-left corner. In the later album illustrations, a dark flaw appeared on the forehead of Washington.



FORGERY A2
SCOTT - 1888 ALBUM CUT
2¢ BLACK
ON CREAM
(160L1)



FORGERY A
SCOTT
2¢ ROSE
ON WHITE
(160L1)



FORGERY A
SCOTT
2¢ RED
ON WHITE
(160L1)



FORGERY A
SCOTT
2¢ ORANGE RED
ON CREAM
(160L1)

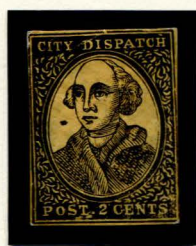


FORGERY A
SCOTT
2¢ DEEP RED
ON CREAM
(160L1)

CITY DISPATCH

S. Allan Taylor made multiple forgeries and a bogus stamp of this post. The first forgery is very similar to Scott's design, but with a few differences. The outer border is not as thick and has a single break in the top, above the "S" of "DISPATCH". The "C" in "CITY" is a little higher than the other letters, and the "2" is taller, almost touching the outer oval.

Two variations exist, which were probably later stages of printing. In these variations, an extra break appeared on the top of the border, in front of the "D" of "DISPATCH", and there is a clear flaw above the period in front of the "2", making it look like a plus sign. Then besides these changes, dark flaws appeared on Washington's face in the second variation.



FORGERY AA
TAYLOR - FORM B1
2c BLACK
ON YELLOW BUFF SC
(160L1)



FORGERY AA
TAYLOR - FORM B4
2c CARMINE
ON WHITE
(160L1)



FORGERY AA
TAYLOR - FORM B4
2c PALE RED VIOLET
ON WHITE
(160L1)



FORGERY AA1
TAYLOR
2c DEEP RED
ON WHITE
(160L1)



FORGERY AA1
TAYLOR
2c RED
ON WHITE
(160L1)



FORGERY AA1
TAYLOR
2c PALE RED
ON WHITE
(160L1)



FORGERY AA1
TAYLOR
2c RED
ON BUFF
(160L1)



FORGERY AA1 VAR
TAYLOR
2c RED VIOLET
ON WHITE
(160L1)



FORGERY AA1 VAR
TAYLOR
2c RED VIOLET
ON BUFF
(160L1)

CITY DISPATCH

In this other forgery made by Taylor, Washington is depicted as if he is wearing make-up. The lettering is also much smaller than in any other design, and the period before the "2" is missing.



FORGERY B
TAYLOR - FORM 10
2¢ BLACK
ON PALE GREEN H LAID
(160L1)



FORGERY B
TAYLOR - FORM 10
2¢ BLACK
ON BRIGHT NAVY BLUE SC
(160L1)

Finally, for his bogus design, Taylor replaced the left-facing image of Washington with the right-facing image of Washington, based on the designs of the "City Despatch Post" stamps.



BOGUS 1
TAYLOR - FORM AB6
2¢ BLUE
ON YELLOWISH H LAID



BOGUS 1
TAYLOR - FORM AB6
2¢ BLUE
ON WHITE



BOGUS 1
TAYLOR - FORM AB6
2¢ BLUE
ON OFF-WHITE



BOGUS 1
TAYLOR - FORM AB6
2¢ DARK BLUE
ON OFF-WHITE



BOGUS 1
TAYLOR - FORM BB6
2¢ ULTRAMARINE
ON WHITE



BOGUS 1
TAYLOR - FORM BB6
2¢ ULTRAMARINE
ON ORANGE BUFF