

CROSBY'S CITY POST

Oliver H. Crosby operated his local post in New York City from 1870 to 1871. During his time in business, his post delivered letters and circulars.

The stamps were designed, engraved and printed by stamp dealer J. W. Scott. After the post closed, Scott reprinted the stamps for sale to collectors. It can be difficult to identify the reprints from the original stamps.



54L1
GENUINE
2c CARMINE
ON WHITE
FULL SHEET OF TWENTY-FIVE
WITH IMPRINT

CROSBY'S CITY POST



Engraved by J. W. Scott & Co., 75 and 77 Nassau St., N. Y.

54L1
GENUINE
2¢ CARMINE (SHADE)
ON WHITE
FULL SHEET OF TWENTY-FIVE
WITH IMPRINT

CROSBY'S CITY POST

Engraved by J. W. Scott & Co., 75 and 77 Nassau St., N. Y.



54L1
GENUINE
2¢ CARMINE (SHADE)
ON WHITE
FULL SHEET OF TWENTY-FIVE
WITH IMPRINT

CROSBY'S CITY POST

Unused Crosby's City Post stamps are common, making them some of the easiest local post stamps to acquired genuine copies of.

Because used copies are less common and more valuable, fake cancels are known applied to otherwise genuine stamps. Only one handstamp cancel, a double oval, is confirmed as genuine.



54L1
GENUINE
2¢ CARMINE (SHADE)
ON WHITE
POSITION 4



54L1
GENUINE
2¢ CARMINE (SHADE)
ON WHITE
POSITION 20
FAKE PERFORATION



54L1
GENUINE
2¢ CARMINE (SHADE)
ON WHITE
POSITION 3
CANCEL



54L1
GENUINE
2¢ CARMINE (SHADE)
ON WHITE
POSITION 9
CANCEL



54L1
GENUINE
2¢ CARMINE (SHADE)
ON WHITE
POSITION 20
CANCEL

While a "PAID" handstamp, like the one on the first example, may have been used by the post, it is not known as a genuine usage on any of the known Crosby's City Post covers.

The cancel on the following two stamps appears to be the known double oval handstamp with "19 William St." in three lines in the center. However, because the known cancellations on cover are mostly indistinct imprints, it is difficult to compare the handstamps accurately.

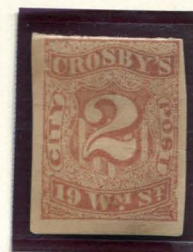
CROSBY'S CITY POST

Because the stamps were both printed and reprinted by Scott, possibly within a short period, it can be very different to determine which stamps are original and which are reprints. To complicate things even more, it is likely that Scott also sold remainders - stamps printed as originals that were sold after the close of the post.

Gummed stamps that can be plated by position are most likely to be genuine. Ungummed, plateable stamps could be genuine or remainders. Stamps with additional flaws or color differences can be easily identified as reprints.



REPRINT
SCOTT
2¢ CARMINE
ON WHITE
(54L1)



REPRINT
SCOTT
2¢ RED BROWN
ON BUFF
(54L1)

It is possible Scott had additional dies of this stamp. The illustrations in his catalogues and the stamps featured below do not share identifying marks with any plate position. The catalogue illustrations have a break in the bottom frame line under the "19", while the stamps have two breaks in the bottom frame line under the "S". These stamps are also printed on a thicker cream paper, which is often associated with Scott's forgeries.



REPRINT
SCOTT - ALBUM CUT
2¢ BLACK
ON CREAM
(54L1)



REPRINT
SCOTT - ALBUM CUT
2¢ BLACK
ON CREAM
(54L1)



REPRINT
SCOTT
2¢ CARMINE (SHADE)
ON CREAM
(54L1)



REPRINT
SCOTT
2¢ CARMINE (SHADE)
ON CREAM
(54L1)



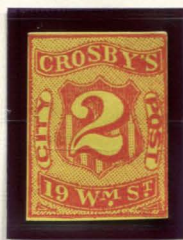
REPRINT
SCOTT
2¢ CARMINE (SHADE)
ON CREAM
(54L1)

CROSBY'S CITY POST

S. Allan Taylor made two different forgeries and a bogus design of the "Crosby's City Post" stamps. This first design is the only one close to the genuine stamps, but still has various differences. For instance: the bottom corner ornaments are not much more than triangles, and the apostrophe in "CROSBY'S" does not cut through the ribbon border.



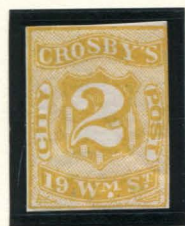
FORGERY A
TAYLOR - FORM 5
2c RED
ON WHITE
(54L1)



FORGERY A
TAYLOR - FORM 5
2c RED
ON YELLOW SC
(54L1)



FORGERY A
TAYLOR - FORM 5
2c RED
ON GRAY VIOLET SC
(54L1)



FORGERY A
TAYLOR - FORM 8
2c YELLOW
ON WHITE
(54L1)



FORGERY A
TAYLOR - FORM 8
2c PURPLE
ON WHITE
(54L1)



FORGERY A
TAYLOR - FORM 8
2c PURPLE
ON YELLOW
(54L1)



FORGERY A
TAYLOR - FORM 8
2c YELLOW
ON PURPLE
(54L1)



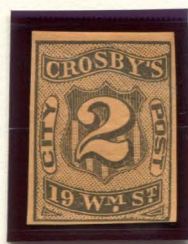
FORGERY A
TAYLOR - FORM 18
2c YELLOW ORANGE
ON WHITE
(54L1)



FORGERY A
TAYLOR - FORM 18
2c ORANGE
ON WHITE
(54L1)



FORGERY A
TAYLOR - FORM 18
2c BLACKISH BROWN
ON WHITE
(54L1)



FORGERY A
TAYLOR - FORM 18
2c BLACK
ON ORANGE BUFF
(54L1)



FORGERY A
TAYLOR - FORM 18
2c BLACK
ON VIOLET BLUE
(54L1)



FORGERY A
TAYLOR - FORM 18
2c ORANGE
ON VIOLET BLUE
(54L1)

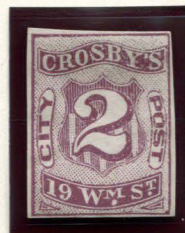
CROSBY'S CITY POST



FORGERY A
TAYLOR - FORM AA16
2c GRAYISH BLUE
ON WHITE
(54L1)



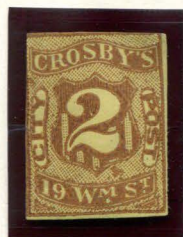
FORGERY A
TAYLOR - FORM AA16
2c RED BROWN
ON WHITE
(54L1)



FORGERY A
TAYLOR - FORM AA16
2c VIOLET BROWN
ON WHITE
(54L1)



FORGERY A
TAYLOR - FORM AA16
2c BROWN PURPLE
ON WHITE
(54L1)



FORGERY A
TAYLOR - FORM AB3
2c LIGHT BROWN
ON DULL YELLOW
(54L1)



FORGERY A
TAYLOR
2c BURGUNDY
ON WHITE
W/ BROWN QUILTED
PATTERN OVERPRINT
(54L1)



FORGERY A
TAYLOR
2c VIOLET
ON LAVENDER
(54L1)



FORGERY A
TAYLOR
2c DARK VIOLET
ON WHITE
(54L1)



FORGERY A
TAYLOR
2c VIOLET
ON WHITE
(54L1)



FORGERY A
TAYLOR
2c RED VIOLET
ON PINKISH
(54L1)



FORGERY A
TAYLOR
2c VIOLET RED
ON WHITE
(54L1)



FORGERY A
TAYLOR
2c BRIGHT PINK
ON WHITE
(54L1)



FORGERY A
TAYLOR
2c PINK
ON WHITE
(54L1)



FORGERY A
TAYLOR
2c LIGHT PINK
ON WHITE
(54L1)

CROSBY'S CITY POST



FORGERY A
TAYLOR
2¢ BLUISH GRAY
ON WHITE
(54L1)



FORGERY A
TAYLOR
2¢ BLUE GREEN
ON WHITE
(54L1)



FORGERY A
TAYLOR
2¢ GREEN
ON WHITE
(54L1)

Taylor's other forgery should probably be called a bogus. The design used for this stamp is that of the "Browne & Co's City Post" 2¢ stamp, but with the text at the top and bottom altered to represent it as a "Crosby's City Post" stamp.



FORGERY B
TAYLOR - FORM 18
2¢ BLACKISH BROWN
ON WHITE
(54L1)



FORGERY B
TAYLOR - FORM 18
2¢ YELLOW ORANGE
ON WHITE
(54L1)



FORGERY B
TAYLOR - FORM 18
2¢ ORANGE
ON WHITE
(54L1)



FORGERY B
TAYLOR - FORM 18
2¢ ORANGE
ON VIOLET BLUE
(54L1)



FORGERY B
TAYLOR - FORM 18
2¢ BLACK
ON ORANGE BUFF
(54L1)



FORGERY B
TAYLOR - FORM 18
2¢ BLACK
ON GRAY GREEN
(54L1)



FORGERY B
TAYLOR
2¢ BROWN
ON WHITE
(54L1)



FORGERY B
TAYLOR
2¢ BLUE
ON WHITE
(54L1)

CROSBY'S CITY POST

Taylor designed an additional bogus stamp using the "Crosby's" name, but in which he changed it to say "Crosby's Special Message Post", and altered the address from "19 William St." to "29 William St." Taylor also used this bogus design for his "Galveston" Confederate States bogus stamps.



PHOTOCOPY
OF
GALVESTON BOGUS



BOGUS
TAYLOR - FORM C
DULL RED
ON WHITE



BOGUS
TAYLOR - FORM C
RED
ON PALE PINK H LAID



BOGUS
TAYLOR - FORM C
BLACK
ON YELLOW



BOGUS
TAYLOR - FORM C
BLACK
ON GREEN SC



BOGUS
TAYLOR - FORM CC3
BLACK
ON WHITE DIAG. RIBBED
W/ GOLD CLOVER OVERPRINT



BOGUS
TAYLOR - FORM CC3
BLACK
ON LIGHT VIOLET SC



BOGUS
TAYLOR - FORM CC3
BLACK
ON GRAY VIOLET SC