

THE
MIKE FARRELL
COLLECTION
OF INDEPENDENT MAILS

INCLUDING THE HISTORY, FORGERIES, & FANTASIES OF
UNITED STATES, LOCAL POSTS, CARRIERS,
INDEPENDENT MAIL ROUTES, & EXPRESS CO.S

DEMING'S PENNY POST

The information and identification within these selections is the individual work of the Farrell Collection. It is always recommended to consult multiple sources for additional information or opinions. Local post company descriptions are based on information available at the time of writing. Descriptions in the Farrell Collection were written based on personal research and sources including, but not limited to: Articles in the Carriers and Locals Society's The Penny Post; Amos Media's Scott Catalogue; Patton's The Private Local Post of the United States; Springer's Handbook of North American Cinderella Stamps; Lyons' Identifier for Carriers, Locals, Fakes Forgeries and Bogus Posts of the United States; articles in the USPCS's The Chronicle; Mosher's Catalog of Private Express Labels and Stamps; The Eastern Independent Mail Company Study Group's Eastern Independent Mail Companies and Express Mail Companies 1840-1845; Elliot Perry's Pat Paragraphs; James N. Drummond's Catalog of Philatelic Miscellany; and the notes of George Sloane and Gordon Stimmell.

Colors listed for stamps and forgeries are the opinions of the Farrell Collection based on viewing physical copies of the pieces under consistent lighting. Colors in the .pdfs may be slightly inaccurate due to manipulations from the scanning process, computer monitor settings, or (in event that the files are printed for offline viewing) the printing process.

Unless otherwise noted, stamps are identified by their Scott Catalogue numbers and forgeries are identified by their Lyons Identifier type. Scott numbers in parenthesis under listed forgeries represent approximately what stamp the forgery is attempting to imitate.

Copyright Amos Media Company - 2020

The Scott Numbers are the copyrighted property of Amos Media Company, and are used here under a licensing agreement with Amos. The marks Scott and Scott's are Registered in the U.S. Patent and Trademark Office, and are trademarks of Amos Media Company. No use may be made of these marks or of material in this publication, which is reprinted from a copyrighted publication of Amos Media Company., without the express written permission of Amos Media Company, Sidney, Ohio 45365.

DEMING'S PENNY POST

Frankfort, Pennsylvania, a part of the city Philadelphia, was home to this local post established by Sidney Deming in 1854. Deming was a reporter who ran the carrier service along with his newspaper business. The post ran until at least 1856. Genuine stamps are rare, with only about four known.



FORGERY A
1¢ BLACK
ON WHITE
(58L1)



FORGERY A
1¢ BLACK
ON CREAM-WHITE
(58L1)
VERTICAL PAIR



FORGERY A
1¢ BLACK
ON CREAM
(58L1)

Two plate varieties are known for the Forgery A design. Forgery A1 has a break in the dash below the "M" in "Deming" - this creates eight dashes under "Deming" instead of the usual seven dashes. Forgery A2 has a break in the arms of the "Y" in "Penny".



FORGERY A1
1¢ BLACK
ON WHITE
(58L1)



FORGERY A2
1¢ BLACK
ON WHITE
(58L1)



FORGERY A1 : 1¢ BLACK ON WHITE
AFFIXED TO COVER
(58L1)

DEMING'S PENNY POST



FORGERY B
TAYLOR - FORM 8
1c YELLOW
ON WHITE
(58L1)



FORGERY B
TAYLOR - FORM 8
1c PURPLE
ON WHITE
(58L1)



FORGERY B
TAYLOR - FORM 8
1c PURPLE
ON YELLOW
(58L1)



FORGERY B
TAYLOR - FORM 9
1c BLACK
ON WHITE
(58L1)



FORGERY B
TAYLOR - FORM 9
1c BLACK
ON SCARLET SC
(58L1)



FORGERY B
TAYLOR - FORM 9
1c BLACK
ON PINK SC
(58L1)



FORGERY B
TAYLOR - FORM 21
1c VIOLET
ON BLUE
(58L1)



FORGERY B
TAYLOR - FORM AA3
1c GOLD
ON GREEN SC
(58L1)



FORGERY B
TAYLOR - FORM AA3
1c GOLD
ON DARK BROWN SC
(58L1)



FORGERY B
TAYLOR - FORM AA3
1c GOLD
ON BRIGHT PURPLE SC
(58L1)



FORGERY B
TAYLOR - FORM AA3
1c GOLD
ON BRIGHT BLUE SC
(58L1)



FORGERY B
TAYLOR - FORM AA3
1c GOLD
ON MAGENTA SC
(58L1)



FORGERY B
TAYLOR - FORM AA3
1c GOLD
ON PALE VIOLET SC
(58L1)



FORGERY B
TAYLOR - FORM AA15
1c DARK NAVY BLUE
ON WHITE
(58L1)



FORGERY B
TAYLOR - FORM AA15
1c BLUE
ON WHITE
(58L1)



FORGERY B
TAYLOR - FORM AA15
1c BLUE
ON BLUISH
(58L1)

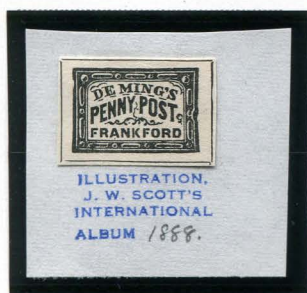
DEMING'S PENNY POST



FORGERY B
TAYLOR
1¢ BLACK
ON CREAM
(58L1)



FORGERY B
TAYLOR
1¢ BLACK
ON BLUE GRAY
(58L1)



The Scott forgeries are based on the illustration published in Scott's catalogues and albums.

SCOTT ILLUSTRATION
CUT FROM ALBUM PAGE



FORGERY C
SCOTT
1¢ BLACK
ON WHITE
(58L1)



FORGERY C
SCOTT
1¢ BLACK
ON THICK CREAM
(58L1)



FORGERY C
SCOTT
1¢ BLACK
ON CREAM
(58L1)

DEMING'S PENNY POST



MOENS ILLUSTRATION
CUT FROM ALBUM PAGE

Forgery D is based on the illustration used in J.B. Moens's 1864 catalogue.



FORGERY D
MOENS
1c BLUE ON WHITE
(58L1)

Later copies of Moens's illustration removed the small curl to the right of "POST".



FORGERY F
AFTER MOENS
1c BLACK ON WHITE
(58L1)



FORGERY F
AFTER MOENS
1c BLACK ON YELLOW
(58L1)

Forgery E is attributed to David Stirling, a Cinderella stamp collector and modern forger.



FORGERY E
STIRLING
1c RED
ON BUFF
(58L1)



FORGERY E
STIRLING
1c ORANGE
ON BUFF
(58L1)



FORGERY E
STIRLING
1c GREEN
ON BUFF
(58L1)



FORGERY E
STIRLING
1c BLUE
ON BUFF
(58L1)



FORGERY E
STIRLING
1c RED
ON WHITE
(58L1)



FORGERY E
STIRLING
1c ORANGE
ON BLUEISH
(58L1)



FORGERY E
STIRLING
1c RED
ON GREEN SC
(58L1)