

THE  
MIKE FARRELL  
COLLECTION  
OF INDEPENDENT MAILS

INCLUDING THE HISTORY, FORGERIES, & FANTASIES OF  
UNITED STATES, LOCAL POSTS, CARRIERS,  
INDEPENDENT MAIL ROUTES, & EXPRESS CO.S

DENVER & RIO GRANDE EXPRESS

The information and identification within these selections is the individual work of the Farrell Collection. It is always recommended to consult multiple sources for additional information or opinions. Local post company descriptions are based on information available at the time of writing. Descriptions in the Farrell Collection were written based on personal research and sources including, but not limited to: Articles in the Carriers and Locals Society's The Penny Post; Amos Media's Scott Catalogue; Patton's The Private Local Post of the United States; Springer's Handbook of North American Cinderella Stamps; Lyons' Identifier for Carriers, Locals, Fakes Forgeries and Bogus Posts of the United States; articles in the USPS's The Chronicle; Mosher's Catalog of Private Express Labels and Stamps; The Eastern Independent Mail Company Study Group's Eastern Independent Mail Companies and Express Mail Companies 1840-1845; Elliot Perry's Pat Paragraphs; James N. Drummond's Catalog of Philatelic Miscellany; and the notes of George Sloane and Gordon Stimmell.

Colors listed for stamps and forgeries are the opinions of the Farrell Collection based on viewing physical copies of the pieces under consistent lighting. Colors in the .pdfs may be slightly inaccurate due to manipulations from the scanning process, computer monitor settings, or (in event that the files are printed for offline viewing) the printing process.

Unless otherwise noted, stamps are identified by their Scott Catalogue numbers and forgeries are identified by their Lyons Identifier type. Scott numbers in parenthesis under listed forgeries represent approximately what stamp the forgery is attempting to imitate.

Copyright Amos Media Company - 2020

The Scott Numbers are the copyrighted property of Amos Media Company, and are used here under a licensing agreement with Amos. The marks Scott and Scott's are Registered in the U.S. Patent and Trademark Office, and are trademarks of Amos Media Company. No use may be made of these marks or of material in this publication, which is reprinted from a copyrighted publication of Amos Media Company., without the express written permission of Amos Media Company, Sidney, Ohio 45365.



# DENVER & RIO GRANDE EXPRESS

## COMPANY HISTORY

This parcel express company operated in conjunction with the Denver & Rio Grand Railroad. It delivered mail and packages to stations on the line in Colorado, Utah, New Mexico, and Wyoming. The company ran from 1880 until 1903, when it was bought and absorbed by the Globe Express Company.

### COMPLIMENTARY FRANKS

The Denver & Rio Grande Express offered complimentary franks to railroad and government officials, some employees, or other influential people. Franks were printed in panes and assembled into booklets, usually valid for a calendar year.

These franks included a facsimile of George W. Kramer's signature in the design. Kramer was the superintendent of the express from 1880 to 1885, then served as a manager from 1886 to 1893.



DRGX-F1  
BROWN ON WHITE  
BLUE CONTROL  
PERF 12 1/4



DRGX-F1  
BROWN ON WHITE  
BLUE CONTROL  
PERF 12 1/4

## Denver and Rio Grande Ry

—THE—

# Denver & Rio Grande

—IS—

### THE FAVORITE ROUTE

FOR PASSENGERS AND FREIGHT

Between all the most important cities and mining camps in Colorado. Over 1,500 miles of standard and narrow gauge, splendidly equipped and carefully managed.

—

### THE DENVER & RIO GRANDE EXPRESS

Is operated in connection with the railway, and guarantees prompt and efficient service at reasonable rates.

**D. C. DODGE,**  
Gen. Manager.

**F. C. NINN,**  
Gen. Pass. & Ticket Agent.

**DENVER, COLORADO.**

ADVERTISEMENT  
PUBLISHED IN  
THE *DELTA CHIEF*  
DELTA, COLORADO  
MAY 16, 1883



# DENVER & RIO GRANDE EXPRESS

## COMPLIMENTARY FRANKS



DRGX-F1  
BROWN ON WHITE  
BLUE CONTROL  
PERF 12 3/4



DRGX-F1  
BROWN ON WHITE  
BLUE CONTROL  
PERF 12 3/4



DRGX-F2  
BLUE ON WHITE  
RED CONTROL  
PERF 12



DRGX-F2  
BLUE ON WHITE  
RED CONTROL  
HORIZONTAL PAIR - PERF 12



DRGX-F2  
BLUE ON WHITE  
RED CONTROL  
PERF 12



DRGX-F2BC - BOOKLET COVER  
BLACK ON BLUE CARD W/ RED CONTROL



# DENVER & RIO GRANDE EXPRESS

## EMPTY CONTAINER STAMPS

These stamps prepaid the return fee for empty shipping containers, after their cargo had been delivered and unloaded. Stamps were issued for two different container types: 5¢ for eggs or butter containers; and 10¢ for poultry coops or fruit containers.

The Address must be plainly written on this Stamp and Stamp pasted on end	188	DENVER & RIO GRANDE RAILROAD. EXPRESS DEPARTMENT.	
		5	5
188			
188		For _____ _____ _____	
188		This Stamp prepays charges on one Empty Egg Case or Butter Tub.	
188		 MANAGER OF EXPRESS.	

DRGX-S1  
5¢ BLACK ON SALMON  
188 DATELINE  
IMPERFORATE

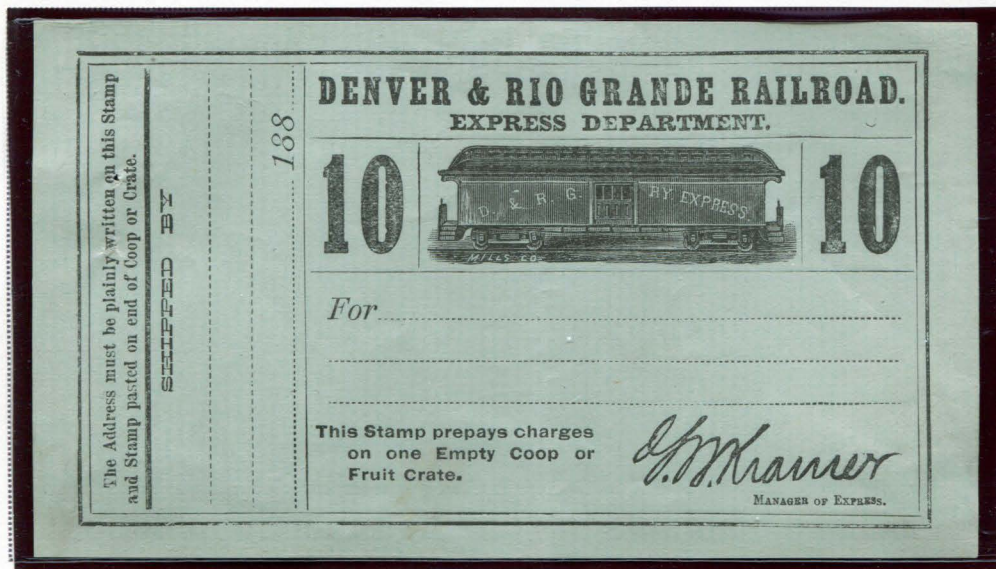
The Address must be plainly written on this Stamp and Stamp pasted on end	189	DENVER & RIO GRANDE RAILROAD. EXPRESS DEPARTMENT.	
		5	5
189			
189		For _____ _____ _____	
189		This Stamp prepays charges on one Empty Egg Case or Butter Tub.	
189		 MANAGER OF EXPRESS.	

DRGX-S2  
5¢ BLACK ON LIGHT BROWN  
189 DATELINE  
IMPERFORATE



# DENVER & RIO GRANDE EXPRESS

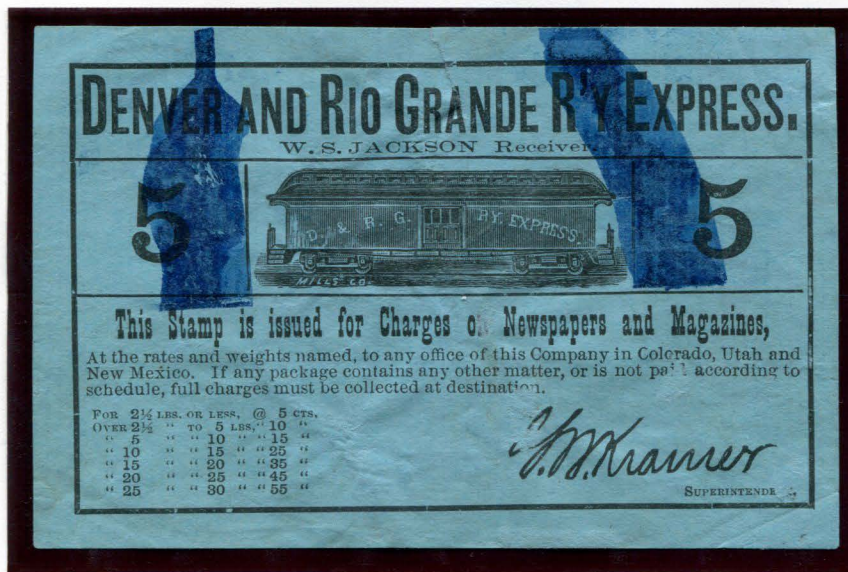
## EMPTY CONTAINER STAMPS



DRGX-S5  
10¢ BLACK ON LIGHT GREEN  
188 DATELINE  
IMPERFORATE

## NEWS MATTER STAMPS

Denver & Rio Grande Express issued specific stamps for prepaying delivery of newspaper and magazines.

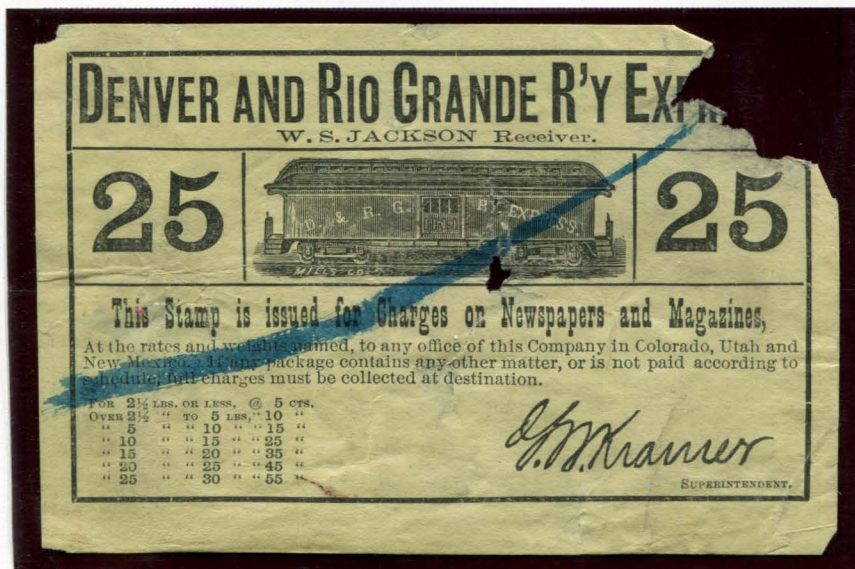


DRGX-S20  
5¢ BLACK ON LIGHT GREEN  
NEWSPAPER - 1884  
IMPERFORATE



# DENVER & RIO GRANDE EXPRESS

## NEWS MATTER STAMPS



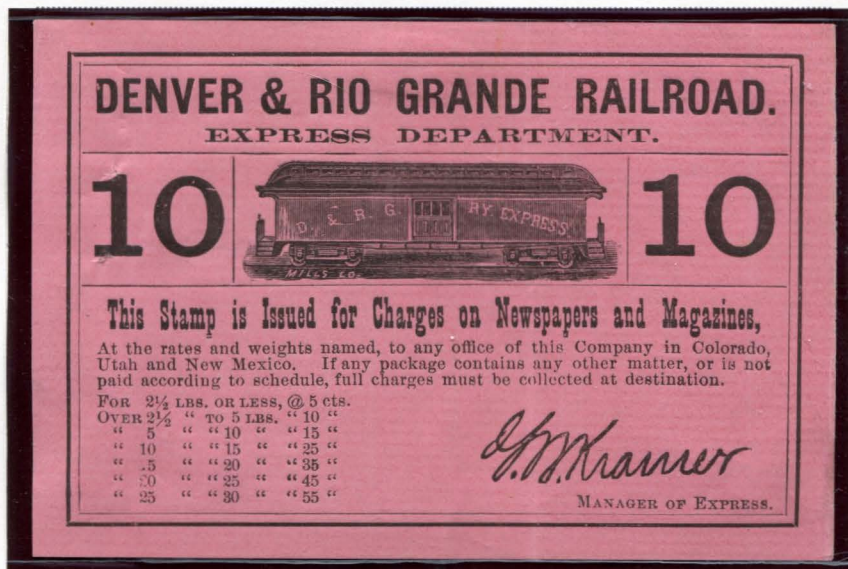
DRGX-S23  
25¢ BLACK ON YELLOW  
NEWSPAPER - 1884  
IMPERFORATE



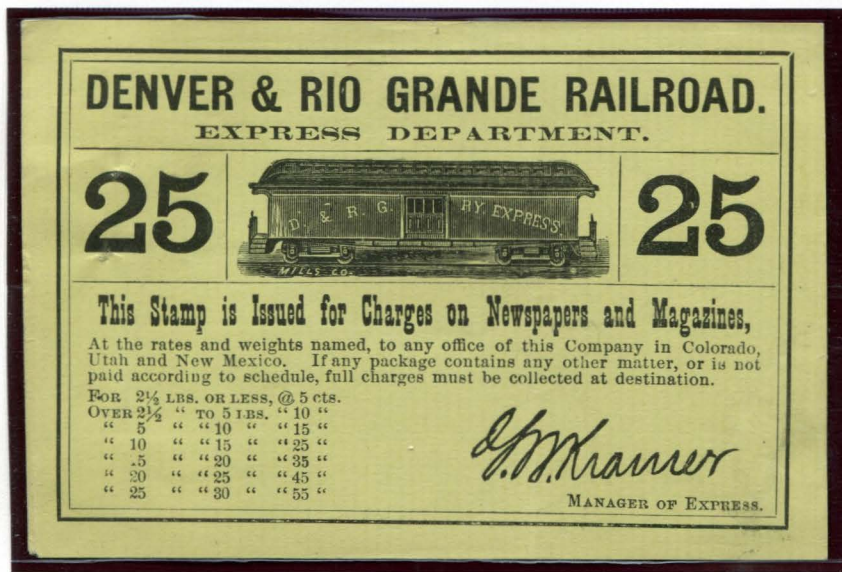
DRGX-S30  
5¢ BLACK ON LIGHT GREEN  
NEWSPAPER - 1886  
IMPERFORATE

# DENVER & RIO GRANDE EXPRESS

## NEWS MATTER STAMPS



DRGX-S31  
10c BLACK ON SALMON  
NEWSPAPER - 1886  
IMPERFORATE

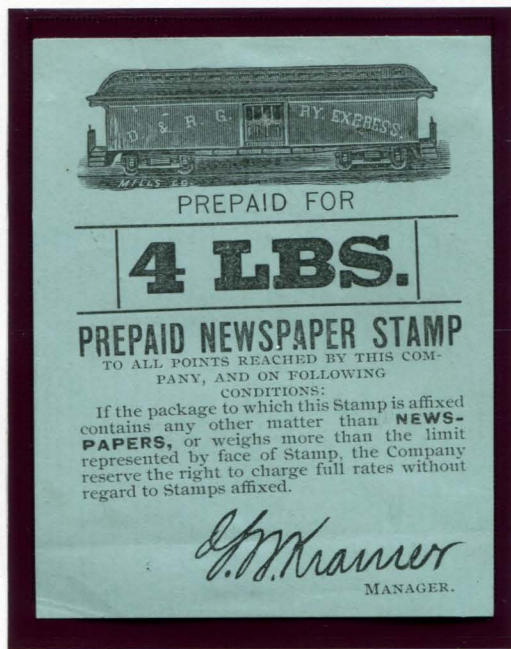


DRGX-S33  
25c BLACK ON YELLOW  
NEWSPAPER - 1886  
IMPERFORATE



# DENVER & RIO GRANDE EXPRESS

## NEWS MATTER STAMPS



DRGX-S43  
4 LB. BLACK ON LIGHT GREEN  
NEWSPAPER - 1886  
IMPERFORATE



DRGX-S51  
2 LB. VERMILION ON WHITE  
NEWSPAPER - 1890  
IMPERFORATE



# DENVER & RIO GRANDE EXPRESS

## FRANKED ENVELOPE

Around 1890, the Denver & Rio Grande Express issued franked stamped envelopes to carry letter mail over their lines. Ten used examples of the frank are recorded by the United Postal Stationery Society in *The Western Express Companies 1850-1890* (published 2013).



DEN-001 - DENVER & RIO GRANDE EXPRESS  
BLACK FRANK ON US STAMPED ENVELOPE  
U311 : 2¢ GREEN ON WHITE | UPSS 931-7  
BARRED ELLIPSE (3) DUPLEX CANCEL  
WITH DENVER, COLORADO CDS - OCTOBER 16, 1890  
WHITINSVILLE, MASSACHUSETTS RECEIVING CDS - OCTOBER 20, 1890  
WC #4141

This cover includes a manuscript notation reading: "Hurried & crowded with business telegram secure date".



# DENVER & RIO GRANDE EXPRESS

## DOCUMENTARY TAX STAMPS

To fund the Spanish American War in 1898, new documentary taxes were issued. Some companies marked their documentary stamps with handstamps. Denver & Rio Grande Express used several different overprint styles on their tax stamps.



R154: 1¢ GREEN  
RED OVERPRINT: I.R. (TYPE B)  
WMK 191 - PERF 12  
PURPLE OVERPRINT  
D. & R. G. EXP.



R163  
1¢ PALE BLUE (SHADE)  
WMK 191R - ROUL 5½  
PURPLE OVERPRINT  
D. & R. G. EXPRESS



R163  
1¢ PALE BLUE (SHADE)  
WMK 191R - ROUL 5½  
PURPLE OVERPRINT  
D. & R. G. EXPRESS



R163  
1¢ PALE BLUE (SHADE)  
WMK 191R - ROUL 5½  
PURPLE OVERPRINT  
D. & R. G. EXP.



R163  
1¢ PALE BLUE (SHADE)  
WMK 191R - ROUL 5½  
PURPLE OVERPRINT  
D. & R. G. EXP.



R163  
V. STRIP OF THREE  
1¢ PALE BLUE (SHADE)  
WMK 191R - ROUL 5½  
PURPLE OVERPRINT  
D. & R. G. EXP.



R163 - VERT. PAIRS  
1¢ PALE BLUE (SHADE)  
WMK 191R - ROUL 5½  
PURPLE OVERPRINT  
D. & R. G. EXP.



R163  
V. STRIP OF THREE  
1¢ PALE BLUE (SHADE)  
WMK 191R - ROUL 5½  
PURPLE OVERPRINT  
D. & R. G. EXP.