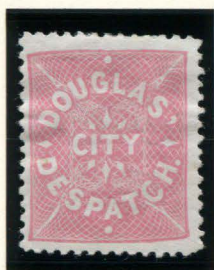


DOUGLAS CITY DESPATCH

This New York City local post was created in 1879 by George H. Douglas. Although it produced two distinct stamp designs, it is not likely that the post existed for long. After this post closed, the printer who created the stamps sold the imperforate remainders to collectors.

The first stamp type featured the post's name in circular text over a lathework background. These are listed in pink and in blue, but shades vary from deep to pale.



59L1
GENUINE
TYPE I
1¢ PINK
ON WHITE
PERFORATION 11



59L2
GENUINE
TYPE I
2¢ BLUE
ON WHITE
PERFORATION 11



59L2
GENUINE
TYPE I
2¢ BLUE
ON WHITE
IMPERFORATE
VERTICAL PAIR
PF CERT #536836

The type 1 stamps are often cancelled with a purple handstamp that appears to have a fancy vinework pattern.

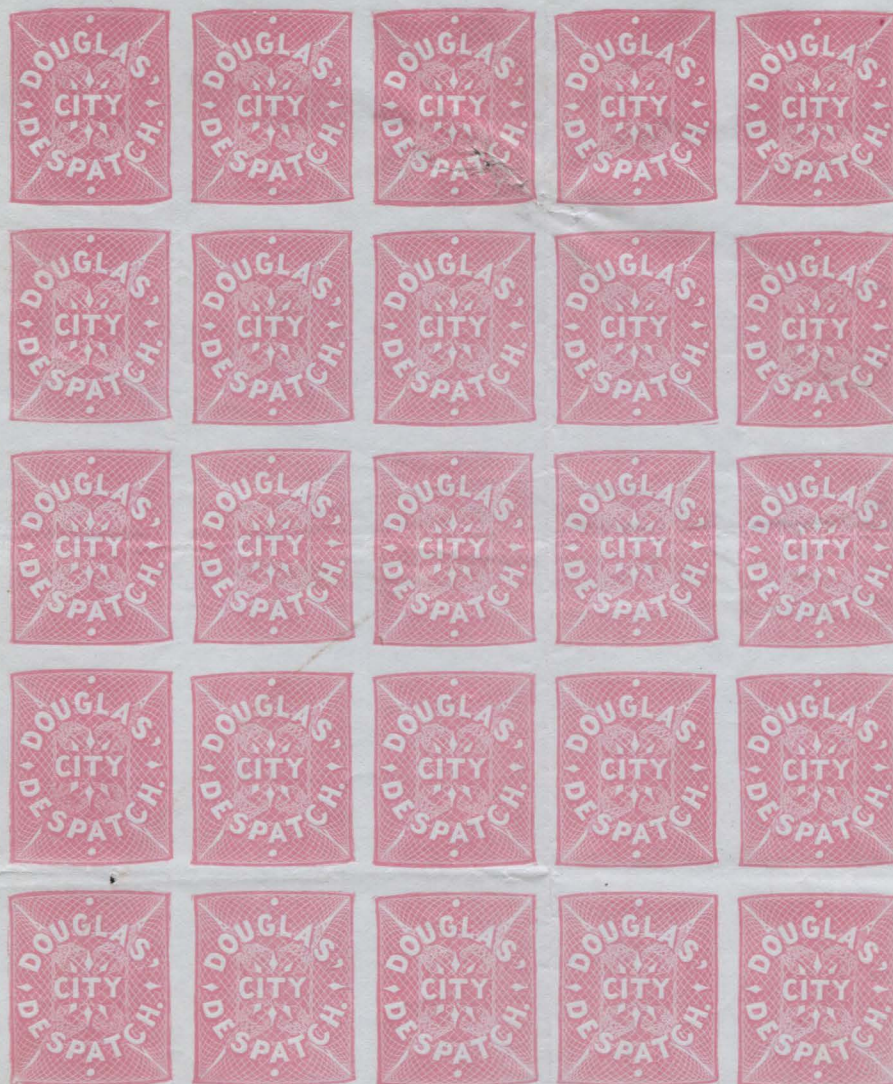


59L1
GENUINE
TYPE I
PERFORATION 11
1¢ PINK
ON WHITE
CANCELED
PURPLE VINE HANDSTAMP



59L2
GENUINE
TYPE I
PERFORATION 11
2¢ BLUE
ON WHITE
CANCELED
PURPLE VINE HANDSTAMP

DOUGLAS CITY DESPATCH



59L1A: GENUINE : TYPE I
1¢ PINK ON WHITE - IMPERFORATE
SHEET OF TWENTY-FIVE

DOUGLAS CITY DESPATCH



59L2A : GENUINE : TYPE I
2¢ BLUE ON WHITE - IMPERFORATE
SHEET OF TWENTY-FIVE

DOUGLAS CITY DESPATCH



59L2 : GENUINE : TYPE I
2c BLUE ON WHITE - PERFORATION 11
SHEET OF TWENTY-FIVE

DOUGLAS CITY DESPATCH

The second stamp design included the post name in an oval vignette with a shield-shaped border. This stamp included the post's address at "251 Broadway" and a 1¢ value.

These stamps are listed in four colors: vermillion, orange, blue, and slate blue. They are known imperforate or perforated at gauge 11, 12, or a combination.



59L3
GENUINE
TYPE II
1¢ VERMILION
ON WHITE
PERFORATION 11



59L3
GENUINE
TYPE II
1¢ VERMILION
ON WHITE
PERFORATION 11 X 12



59L3A
GENUINE
TYPE II
IMPERFORATE
1¢ VERMILION
ON WHITE



59L4
GENUINE
TYPE II
1¢ ORANGE
ON WHITE
PERFORATION 11 X 12



59L5
GENUINE
TYPE II
1¢ BLUE
ON WHITE
PERFORATION 11½



59L5
GENUINE
TYPE II
1¢ BLUE
ON WHITE
PERFORATION 12



59L5A
GENUINE
TYPE II
1¢ BLUE
ON WHITE
IMPERFORATE



59L6
GENUINE
TYPE II
1¢ SLATE BLUE
ON WHITE
PERFORATION 12



59L6A
GENUINE
TYPE II
1¢ SLATE BLUE
ON WHITE
IMPERFORATE

DOUGLAS CITY DESPATCH

The type II stamps are also usually canceled in purple, but tend to used cut cork-type killers rather than the more intricate handstamp found on type I stamps.



59L3
GENUINE
TYPE II
1¢ VERMILION
ON WHITE
PERFORATION 11
CANCELED
PURPLE CIRCULAR GRID
STAMP



59L3a
GENUINE
TYPE II
1¢ VERMILION
ON WHITE
IMPERFORATE
CANCELED
PURPLE CIRCLE OF
WEDGES



59L4
GENUINE
TYPE II
1¢ ORANGE
ON WHITE
PERFORATION 11 X 12
CANCELED
PURPLE MANUSCRIPT
MARKING



59L5a
GENUINE
TYPE II
1¢ BLUE
ON WHITE
IMPERFORATE
CANCELED
BLUE CIRCLE

Type I stamps were printed in sheets of twenty-five subjects. Type II stamps were printed in sheets of fifty.



59L3a
GENUINE - TYPE II
1¢ VERMILION ON WHITE
IMPERFORATE
HORIZONTAL PAIR
& BLOCK OF FOUR



59L5a
GENUINE - TYPE II
1¢ BLUE ON WHITE
IMPERFORATE
HORIZONTAL PAIR
& BLOCK OF FOUR



DOUGLAS CITY DESPATCH



59L4A : GENUINE : TYPE II
1¢ ORANGE ON WHITE - IMPERFORATE
SHEET OF TWENTY-FIVE

DOUGLAS CITY DESPATCH



59L3a : GENUINE : TYPE II
1¢ VERMILION ON WHITE - IMPERFORATE
SHEET OF FIFTY
- PHOTOCOPY, REDUCED TO 50% -
SEE OVERSIZED ALBUM

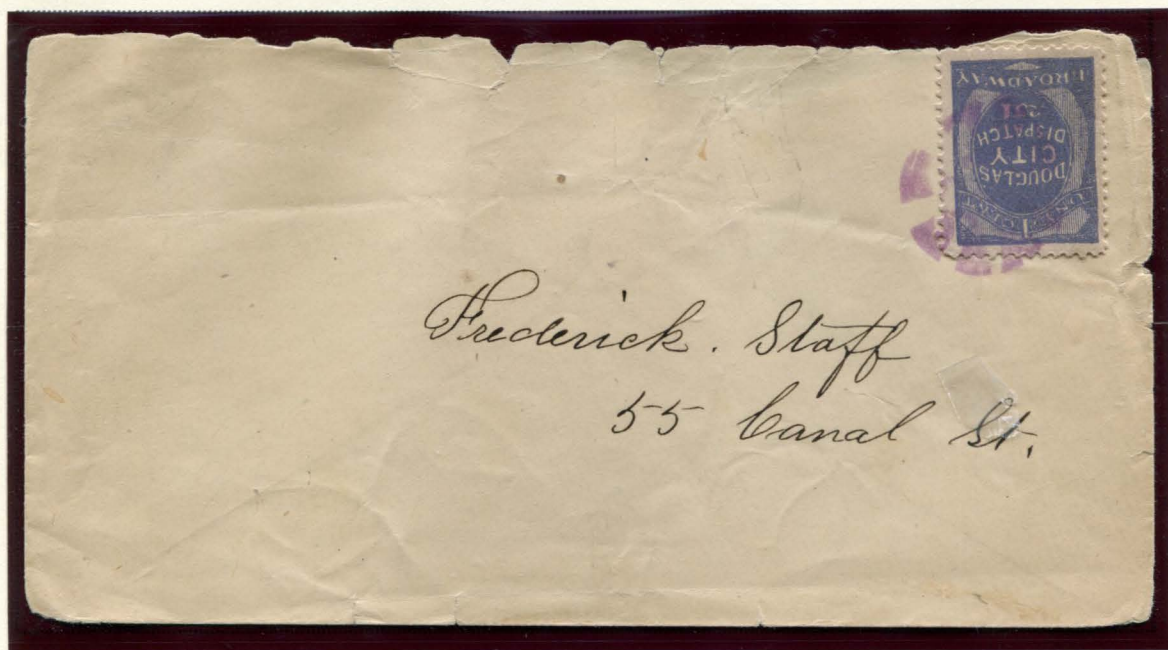


59L5a : GENUINE : TYPE II
1¢ BLUE ON WHITE - IMPERFORATE
SHEET OF FIFTY
- PHOTOCOPY, REDUCED TO 50% -
SEE OVERSIZED ALBUM

DOUGLAS CITY DESPATCH



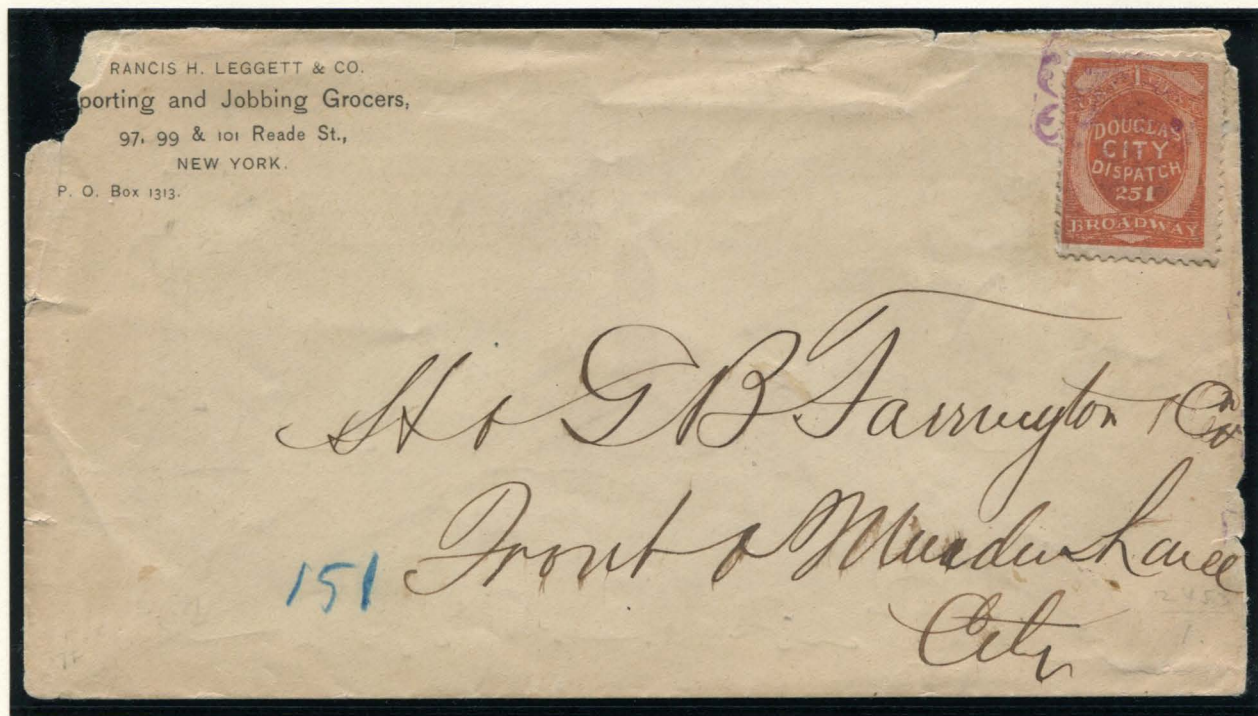
59L1 : 1¢ PINK ON WHITE
TYPE I - PERFORATION 11
GENUINE USE ON COVER
PURPLE VINE HANDSTAMP CANCEL



59L5 : 1¢ BLUE ON WHITE
TYPE II - PERFORATION 12
GENUINE USE ON COVER
PURPLE CUT CORK CANCEL

DOUGLAS CITY DESPATCH

Featured here is an advertising cover, with an all-over design on the reverse. It was delivered locally, and cancelled with Douglas's ornate, purple vine handstamp.



59L4 : 1¢ ORANGE ON WHITE
TYPE II - PERFORATION 11
GENUINE USE ON COVER
PURPLE VINE HANDSTAMP CANCEL

We keep a Complete Assortment of the ENTERPRISE MANUFACTURING CO'S GOODS.

The Best COFFEE, DRUG and SPICE MILLS in the Market.

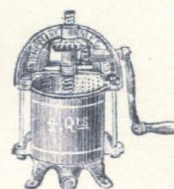
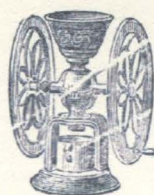
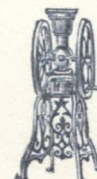
MEASURING FAUCETS, BUNG-HOLE BORERS,
TOBACCO



CUTTERS,
SAD-IRONS,
&c., &c.



CHEESE
KNIVES,
&c., &c.



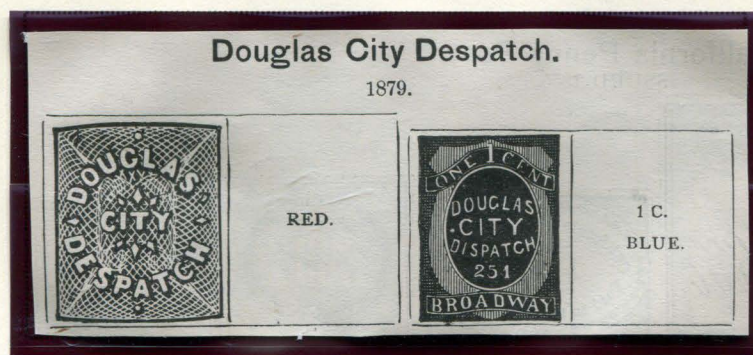
PHOTOCOPY OF DESIGN ON COVER REVERSE

DOUGLAS CITY DESPATCH

Featured below is an unlisted Douglas City Despatch type II stamp forgery. This example has been previously mounted and shows some damage. We have identified it as a Scott forgery, as it is based on the illustration in Scott publications from 1888 (including *The American Journal of Philately* Volume 1).



FORGERY
TYPE II
SCOTT
1¢ BLACK
ON CREAM
(59L5)



SCOTT - ALBUM CUT
TYPES I & II

No other forgeries are recorded for this post.