

THE
MIKE FARRELL
❧ COLLECTION ❧
OF INDEPENDENT MAILS

INCLUDING THE HISTORY, FORGERIES, & FANTASIES OF
UNITED STATES, LOCAL POSTS, CARRIERS,
INDEPENDENT MAIL ROUTES, & EXPRESS CO.S

DUPUY & SCHENCK

The information and identification within these selections is the individual work of the Farrell Collection. It is always recommended to consult multiple sources for additional information or opinions. Local post company descriptions are based on information available at the time of writing. Descriptions in the Farrell Collection were written based on personal research and sources including, but not limited to: Articles in the Carriers and Locals Society's The Penny Post; Amos Media's Scott Catalogue; Patton's The Private Local Post of the United States; Springer's Handbook of North American Cinderella Stamps; Lyons' Identifier for Carriers, Locals, Fakes Forgeries and Bogus Posts of the United States; articles in the USPS's The Chronicle; Mosher's Catalog of Private Express Labels and Stamps; The Eastern Independent Mail Company Study Group's Eastern Independent Mail Companies and Express Mail Companies 1840-1845; Elliot Perry's Pat Paragraphs; James N. Drummond's Catalog of Philatelic Miscellany; and the notes of George Sloane and Gordon Stimmell.

Colors listed for stamps and forgeries are the opinions of the Farrell Collection based on viewing physical copies of the pieces under consistent lighting. Colors in the .pdfs may be slightly inaccurate due to manipulations from the scanning process, computer monitor settings, or (in event that the files are printed for offline viewing) the printing process.

Unless otherwise noted, stamps are identified by their Scott Catalogue numbers and forgeries are identified by their Lyons Identifier type. Scott numbers in parenthesis under listed forgeries represent approximately what stamp the forgery is attempting to imitate.

Copyright Amos Media Company - 2020

The Scott Numbers are the copyrighted property of Amos Media Company, and are used here under a licensing agreement with Amos. The marks Scott and Scott's are Registered in the U.S. Patent and Trademark Office, and are trademarks of Amos Media Company. No use may be made of these marks or of material in this publication, which is reprinted from a copyrighted publication of Amos Media Company., without the express written permission of Amos Media Company, Sidney, Ohio 45365.

DUPUY & SCHENCK

Henry Dupuy and Jacob H. Schenck, former letter carriers for the City Despatch Post, established their own post office in 1846. The two ran their post for at least two years, until 1848.

It is uncertain how the post ended, but it is likely that they were purchased by John R. Bouton and merged into his Bouton's City Dispatch Post.

Dupuy & Schenck Penny Post issued two stamps of the same beehive design: one printed on white, glazed surface paper; and the other printed on grayish wove.



60L1 : GENUINE
1¢ BLACK ON WHITE
PF CERT #536824



60L2 : GENUINE
1¢ BLACK ON GRAY
PF CERT #536825



60L2 : 1¢ BLACK ON GRAY
GENUINE ON COVER
MANUSCRIPT CANCELLATION
RED "DUPUY & SCHENCK PENNY POST" HANDSTAMP

The cover above was delivered locally by Dupuy & Schenck, prepaid with a genuine black on grayish type stamp. The cover is also marked with a red "Dupuy & Schenck Penny Post" handstamp.

This letter was delivered to James Harper, a publisher at 82 Cliff Street in New York City.

DUPUY & SCHENCK

Dupuy & Schenck forgeries produced by Scott are known as "forgery A".



FORGERY A
SCOTT
1c BLACK
ON GRAY SC
(60L2)



FORGERY A
SCOTT
1c BLACK
ON BROWN SC
(60L2)

Forgeries engraved by Thomas Wood and offered for sale by George Hussey are known as "forgery B". Wood printed 6,000 Dupuy & Schenck forgeries according to his records as published in *Byways of Philately*. These forgeries were printed on surface colored paper.

Some sheets of forgery B show the edges of the forgeries were the surface colored area ends. These sheets all contain identical edges to the surface colored area. It is possible that these forgeries are modern copies of forgery B.



FORGERY B
HUSSEY
1c BLACK
ON GRAY SC
(60L2)



FORGERY B
HUSSEY
1c BLACK
ON BROWNISH SC
(60L2)



FORGERY B (MODERN?)
HUSSEY
1c BLACK
ON GRAY SC
(60L2)



FORGERY B (MODERN?)
HUSSEY
1c BLACK
ON BROWNISH SC
(60L2)

DUPUY & SCHENCK



FORGERY B
HUSSEY
1c BLACK
ON BROWNISH SC
(60L2)
PSAG# 0565694 (COUNTERFEIT)

DUPUY & SCHENCK



FORGERY B (MODERN?)
HUSSEY
1c BLACK
ON BROWNISH SC
(60L2)

DUPUY & SCHENCK



FORGERY B (MODERN?)
HUSSEY
1c BLACK
ON DARKISH BROWN SC
(60L2)

DUPUY & SCHENCK

Taylor produced two Dupuy & Schenck forgeries, although it is most likely that the second is just a later version of the first, after plate wear dulled the image.



FORGERY E
TAYLOR - FORM S13
1c BLACK
ON RASPBERRY SC
(60L1)



FORGERY E
TAYLOR - FORM S13
1c BLACK
ON TEAL SC
(60L1)



FORGERY E
TAYLOR - FORM S13
1c BLACK
ON LIGHT BLUE SC
(60L1)



FORGERY E
TAYLOR
1c BLUE
ON WHITE
(60L1)



FORGERY E
TAYLOR
1c ULTRAMARINE
ON WHITE
(60L1)



FORGERY E
TAYLOR
1c BRONZE
ON WHITE
(60L1)



FORGERY E
TAYLOR
1c BLACK
ON LIGHT GREEN
(60L2)



FORGERY E
TAYLOR
1c BLACK
ON GREEN
(60L2)



FORGERY E
TAYLOR
1c BLACK
ON VIOLET SC
(60L2)



FORGERY C
TAYLOR - FORM 4
1c BLACK
ON GRAY GREEN
(60L2)



FORGERY C
TAYLOR - FORM 4
1c BLACK
ON VIOLET BLUE
(60L2)

DUPUY & SCHENCK



FORGERY C
TAYLOR - FORM 4
1¢ BLACKISH BROWN
ON WHITE LAID
(60L1)



FORGERY C
TAYLOR - FORM 4
1¢ GREEN
ON WHITE WOVE
(60L1)



FORGERY C
TAYLOR - FORM 4
1¢ GREEN
ON WHITE LAID
(60L1)



FORGERY C
TAYLOR - FORM 4
1¢ PALE PURPLE
ON WHITE
(60L1)



FORGERY C
TAYLOR - FORM 4
1¢ PALE PURPLE
ON WHITE LAID
(60L1)



FORGERY C
TAYLOR - FORM 4
1¢ BLACKISH BROWN
ON BRIGHT ORANGE
(60L1)



FORGERY C
TAYLOR - FORM 7
1¢ BISTRE BROWN
ON WHITE WOVE
(60L1)



FORGERY C
TAYLOR - FORM 7
1¢ BROWN
ON GRAY BROWN SC
(60L2)



FORGERY C
TAYLOR - FORM 7
1¢ BROWN
ON BRIGHT ORANGE SC
(60L2)



FORGERY C
TAYLOR - FORM 8
1¢ YELLOW
ON WHITE WOVE
(60L1)



FORGERY C
TAYLOR - FORM 8
1¢ PURPLE
ON WHITE WOVE
(60L1)



FORGERY C
TAYLOR - FORM 8
1¢ PURPLE
ON YELLOW
(60L2)



FORGERY C
TAYLOR - FORM 16
1¢ BLACK
ON WHITE WOVE
(60L1)



FORGERY C
TAYLOR - FORM 16
1¢ BLACK
ON LIGHT BLUE VIOLET SC
(60L2)

DUPUY & SCHENCK



FORGERY C
TAYLOR
1c BLACK
ON WHITE
(60L1)



FORGERY C
TAYLOR
1c BRONZE
ON WHITE
(60L1)



FORGERY C
TAYLOR
1c BLUE
ON WHITE
(60L1)



FORGERY C
TAYLOR
1c ORANGE
ON WHITE
(60L1)



FORGERY C
TAYLOR
1c BLACK
ON WHITE LAID
(60L1)



FORGERY C
TAYLOR
1c BLACK
ON CREAM LAID
(60L1)

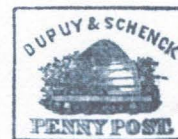
Moens published two different illustrations in his catalogues. The first illustration, lithographed by F. Deraedemacker, was used to create Forgery D. Moens used different illustrations, by an unlisted artist, for his publications after 1864. There are no recorded forgeries using this second design.



PHOTOCOPY OF
ILLUSTRATION
LES TIMBRES POSTE
ILLUSTRES 1864



FORGERY D
DERAEDEMACKER
1c BLACK
ON LIGHT PINK
(60L1)



1594
PHOTO OF
ILLUSTRATION
CATALOGUE PRIX-COURANT
DE TIMBRES-POSTE 1883

The modern forgery at right is attributed to David Stirling.



FORGERY G
MODERN
1c OLIVE
ON OFF-WHITE
(60L1)