

THE
MIKE FARRELL
❧ COLLECTION ❧
OF INDEPENDENT MAILS

INCLUDING THE HISTORY, FORGERIES, & FANTASIES OF
UNITED STATES, LOCAL POSTS, CARRIERS,
INDEPENDENT MAIL ROUTES, & EXPRESS CO.S

EAGLE CITY POST

The information and identification within these selections is the individual work of the Farrell Collection. It is always recommended to consult multiple sources for additional information or opinions. Local post company descriptions are based on information available at the time of writing. Descriptions in the Farrell Collection were written based on personal research and sources including, but not limited to: Articles in the Carriers and Locals Society's The Penny Post; Amos Media's Scott Catalogue; Patton's The Private Local Post of the United States; Springer's Handbook of North American Cinderella Stamps; Lyons' Identifier for Carriers, Locals, Fakes Forgeries and Bogus Posts of the United States; articles in the USPCS's The Chronicle; Mosher's Catalog of Private Express Labels and Stamps; The Eastern Independent Mail Company Study Group's Eastern Independent Mail Companies and Express Mail Companies 1840-1845; Elliot Perry's Pat Paragraphs; James N. Drummond's Catalog of Philatelic Miscellany; and the notes of George Sloane and Gordon Stimmell.

Colors listed for stamps and forgeries are the opinions of the Farrell Collection based on viewing physical copies of the pieces under consistent lighting. Colors in the .pdfs may be slightly inaccurate due to manipulations from the scanning process, computer monitor settings, or (in event that the files are printed for offline viewing) the printing process.

Unless otherwise noted, stamps are identified by their Scott Catalogue numbers and forgeries are identified by their Lyons Identifier type. Scott numbers in parenthesis under listed forgeries represent approximately what stamp the forgery is attempting to imitate.

EAGLE CITY POST

A local post of Philadelphia, the Eagle City Post is believed to have been a joint venture for the Adams & Co. company. It was originally founded by William B. Stait, a former American Letter Mail Co. employee, around 1845. Sanford and Shoemaker, Adam's partners in Philadelphia, joined with Stait and ran this post from the Adams Express headquarters at 85 Chestnut St. (later 80 Chestnut St.).

The Eagle City Post.

It will be seen by an advertisement inserted in another part of our paper, that Stait & Co. have established the Eagle City Post and Telegraph Message Delivery, at No. 80 Chesnut street, and at all the Magnetic Telegraph offices. This new enterprise is likely to prove of great public accommodation.

The post was also known as Stait's Despatch, starting with a handstamp in 1850. It continued until at least 1852 under that name.

NEWS CLIPPING
PUBLISHED IN
THE PHILADELPHIA INQUIRER
DECEMBER 15, 1847

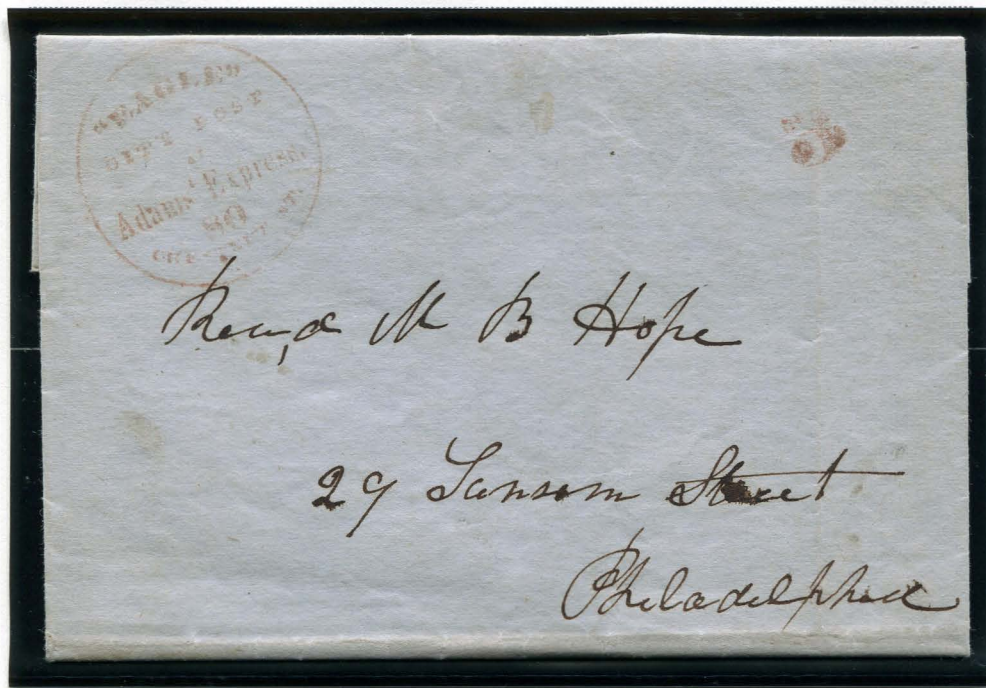


RED EAGLE CITY POST HANDSTAMP (TYPE A)
GENUINE ON COVER
RED "3" NUMERAL HANDSTAMP
DOCKETED MARCH 2, 1846

The letter above was carried from Easton, Pennsylvania to Philadelphia - a distance of about 50 miles. In 1846, the US post office rate for distances under 300 miles was 5¢. The lack of government handstamps on this cover indicates it was probably carried by Adams & Co. to Philadelphia, where it was handstamped and charged 3¢ for the local delivery fee by Eagle City Post. The letter discusses the enclosed money being delivered and request for receipt.

EAGLE CITY POST

The letter below was carried from Macomb, Illinois to Philadelphia - a distance of more than 900 miles. In 1847, the US postal rate for distances over 300 miles was 10¢. Since there is are no US post office markings, the letter was likely carried by Adams' Express to Philadelphia, where it was delivered locally by Eagle City Post. The "3" handstamp used on this cover indicates 3¢ paid to Eagle City Post.



RED EAGLE CITY POST HANDSTAMP (TYPE B)
GENUINE ON COVER
RED "3" NUMERAL HANDSTAMP
DOCKETED JULY 18, 1847

EAGLE CITY POST AND TELEGRAPH DELIVERY,

AT ADAMS' Package Express, 60 Chesnut street, and all the Magnetic Telegraph offices. Constant deliveries from sunrise to sunset. Particular attention given to the serving of letters, circulars, and all communications. A special messenger can be obtained at any hour for a moderate compensation.

No connexion with Blood & Co.
de 15 wfm2inrp

STAIT & CO.

Eagle City Post offered local delivery service for letters and circulars, as well as a special delivery service.

NEWS CLIPPING
PUBLISHED IN
THE PHILADELPHIA INQUIRER
DECEMBER 15, 1847

The circular on the following page was carried by Eagle City Post and is marked with the same handstamps as the cover above. (Red Type B; numeral 3)

EAGLE CITY POST



RED EAGLE CITY POST HANDSTAMP (TYPE B) - GENUINE ON CIRCULAR
RED "3" NUMERAL HANDSTAMP - AUGUST 1848

EAGLE CITY POST

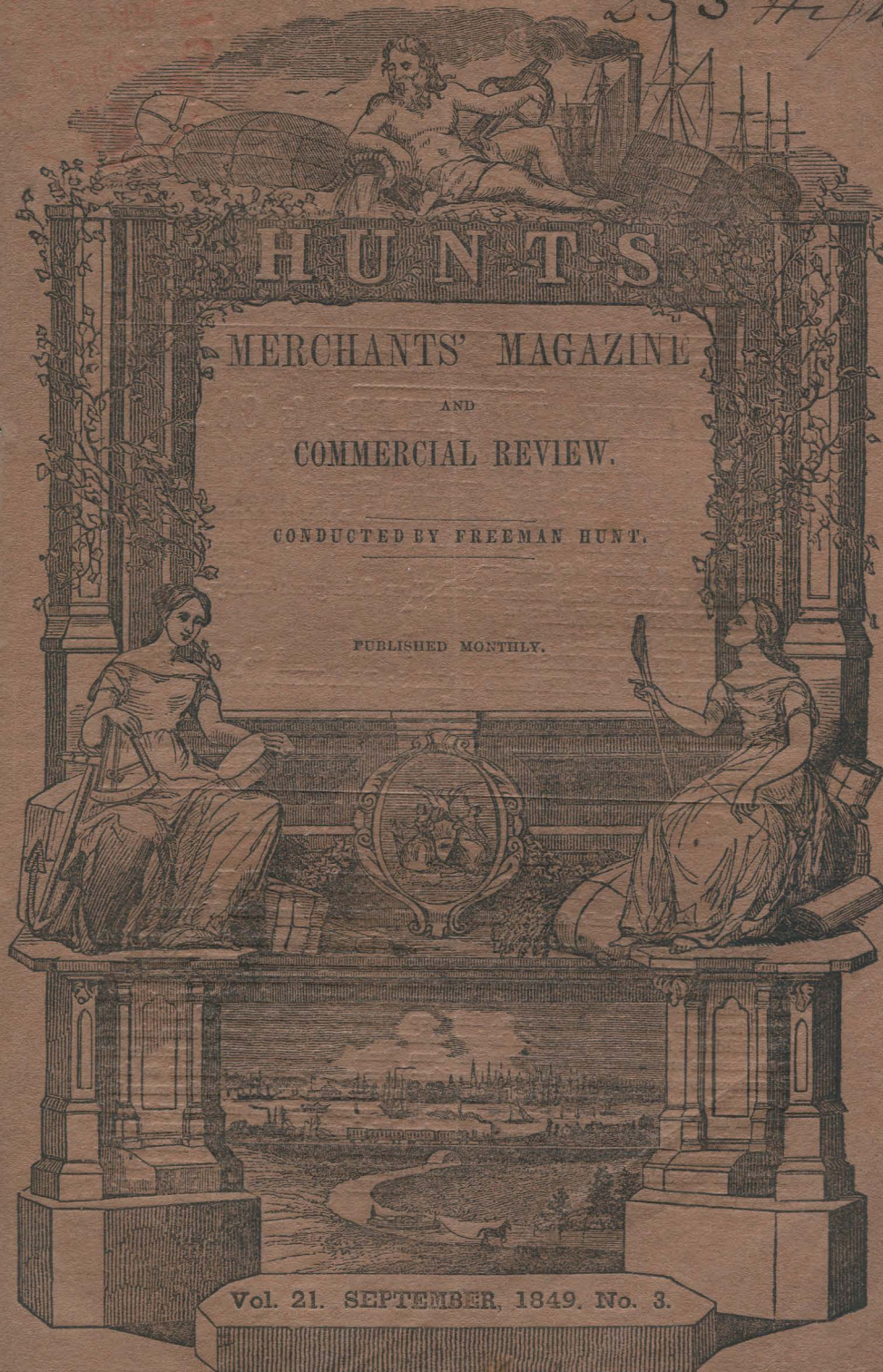
*Frederick
one dollar J. Hall
Ladies Club*



NEW YORK: FREEMAN HUNT, No. 142 FULTON STREET.
BOSTON: T. WILEY, Jr., and REDDING & CO.
PHILADELPHIA: G. B. ZIEBER & CO. AND J. R. POLLOCK. - NEW ORLEANS: J. G. MORGAN.

EAGLE CITY POST

Thomas Carpenter & Co
CXXIII. 253 High

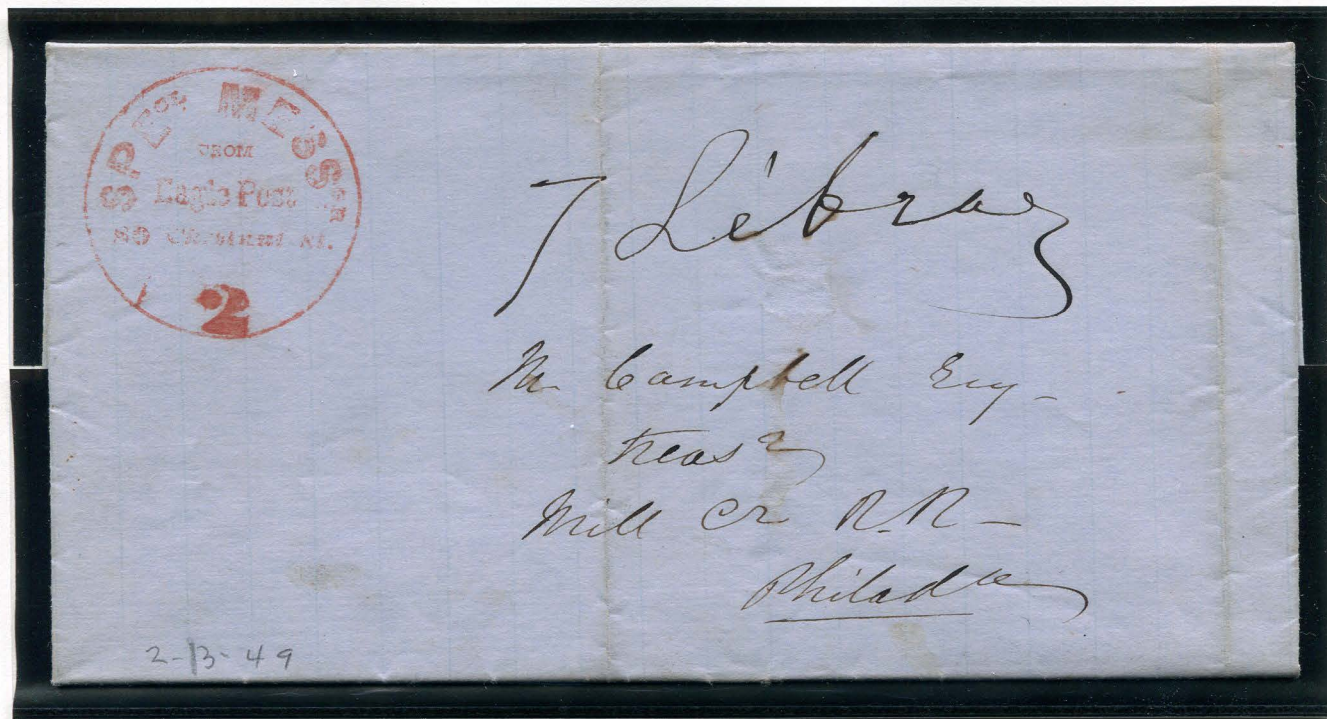


NEW YORK: FREEMAN HUNT, No. 142 PULTON STREET.
BOSTON: T. WILEY, JR., REDDING & CO., and CROSBY & NICHOLS.
PHILADELPHIA: G. B. ZIEBER & CO. and J. R. POLLOCK.—NEW ORLEANS: J. G. MORGAN.

RED EAGLE CITY POST HANDSTAMP (TYPED) - GENUINE ON CIRCULAR
ADAM'S TELEGRAPH OFFICE - 3¢ - SEPTEMBER 1849

EAGLE CITY POST

The letter below was delivered locally by Eagle City Post via their special messenger service. It was carried from Pottsville, Pennsylvania to Philadelphia along the Mill Creek Railroad in February 1849. This handstamp includes a 2¢ denomination.



RED EAGLE CITY POST HANDSTAMP (TYPE G)
WITH RED NUMERAL "2"
GENUINE ON COVER
DOCKETED FEBRUARY 13, 1849

THE EAGLE CITY POST,
WHOSE PRINCIPAL OFFICES are at Adams' Package Express, House's Telegraph, the Western Telegraph, and 48 South Third street, is pursuing the even tenor of its way without inflicting a flood of advertisements upon the reading public. PAID or UNPAID letters served faithfully by this post.
A strong force of carriers is being organised for the Valentine season, to render service to the Saint and his devotees.
N. B.—A Special Messenger for City, State, or any part of the World, at half an hour's notice. [23-25] STAIT & CO.

ADVERTISEMENT PUBLISHED IN
THE PHILADELPHIA SUNDAY DISPATCH
JANUARY 14, 1849

EAGLE CITY POST

The first stamps of this post were a simple, circular design and are extremely rare (only four examples are currently recorded). The second type of stamp issued used a sunburst/ray design with either 39 or 46 points.



61L1
PHOTOCOPY REFERENCE
THE GOLDEN COLLECTION
SIEGEL SALE 817, LOT 1031



61L2
GENUINE
TYPE I - 46 RAY
2¢ BLACK
ON WHITE



61L2
GENUINE
TYPE II - 39 RAY
2c BLACK
ON WHITE



61L2 : 2c BLACK ON WHITE
TYPE II - 46 RAY
GENUINE ON COVER
MANUSCRIPT CANCELLATION
RED "PAID" HANDSTAMP
JANUARY 6, 1849 (DOCKETING)
PF# 490485

EAGLE CITY POST

The block of eighteen below is the largest known multiple of the Eagle City ray stamps, showing how the two types (46-ray and 39-ray) were printed together in pairs, and how tête-bêche pairs were created by printing some pairs upside down within the sheet.

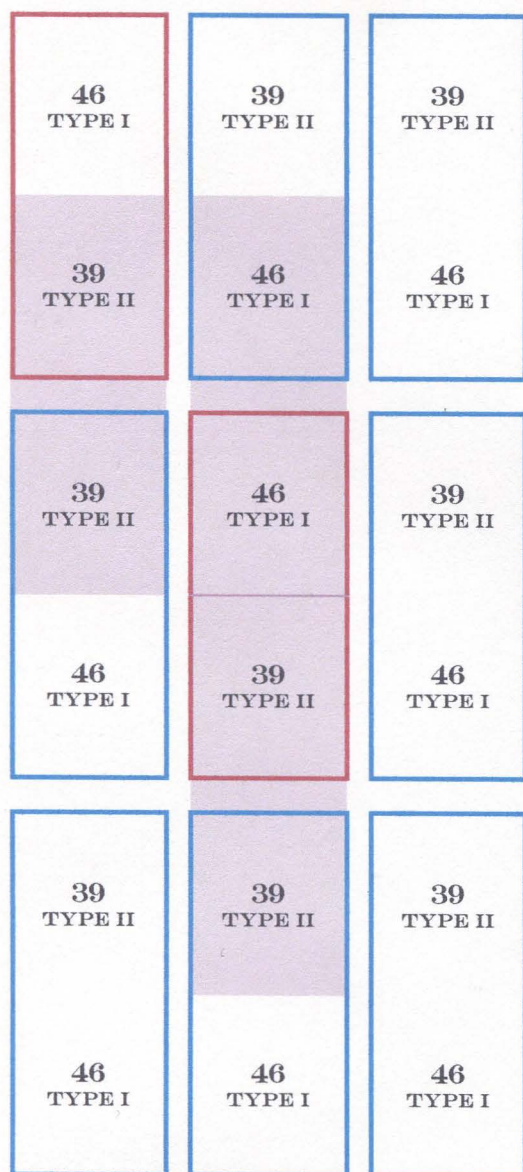


DIAGRAM OF BLOCK,
SHOWING LOCATIONS OF STAMP TYPES
BLUE BORDER = UPRIGHT PAIR
RED BORDER = INVERTED PAIR
SHADED BACKGROUND = TÊTE-BÊCHE



61L2 : GENUINE
TYPE I - 46 RAY & TYPE II - 39 RAY
2c BLACK ON WHITE
BLOCK OF EIGHTEEN
WITH THREE TÊTE-BÊCHE PAIR (61L2A)
PF CERT #0365827

EAGLE CITY POST

Forgery A is based on the illustrations published by Scott. Forgery E is based on the Scott forgery, but the central numeral "80" and ornaments are removed and replaced with a simple "5" - the creator of this forgery is unknown. These forgeries always have 39 points around the circle.



FORGERY A
SCOTT
TYPE II - 39 RAY
2¢ BLACK
ON THICK WHITE
(61L2)



FORGERY A
SCOTT
TYPE II - 39 RAY
2¢ BLACK
ON THIN WHITE
(61L2)



FORGERY A
SCOTT
TYPE II - 39 RAY
2¢ INTENSE BLACK
ON THICK CREAM
(61L2)



FORGERY A
SCOTT
TYPE II - 39 RAY
2¢ BLACK
ON THIN BUFF
(61L2)



FORGERY A
SCOTT
TYPE II - 39 RAY
2¢ BLACK
ON GREEN SC
(61L2)



FORGERY E
(SCOTT INSPIRED)
TYPE II - 39 RAY
2¢ PURPLE
ON WHITE
(61L2)

Hussey's Eagle City Post forgeries always have 46 points around the circle.



FORGERY B
HUSSEY
TYPE II - 46 RAY
2¢ BLACK
ON WHITE
(61L2)



FORGERY B - HUSSEY
TYPE I - 46 RAY : 2¢ BLACK ON WHITE : (61L2) : BLOCK OF TEN

EAGLE CITY POST

S.A. Taylor's forgeries are printed with 39 points. They are known in many colors, and printed on a wide variety of papers.



FORGERY C
TAYLOR - FORM 16
TYPE II - 39 RAY
2¢ BLACK
ON WHITE
(61L2)



FORGERY C
TAYLOR - FORM 16
TYPE II - 39 RAY
2¢ BLACK
ON LIGHT BLUE VIOLET SC
(61L2)



FORGERY C
TAYLOR - FORM AA2
TYPE II - 39 RAY
2¢ ORANGE RED ON
VIOLET PINK H LAID
(61L2)



FORGERY C
TAYLOR - FORM AA2
TYPE II - 39 RAY
2¢ ORANGE RED ON
YELLOW GREEN H LAID
(61L2)



FORGERY C
TAYLOR - FORM AA2
TYPE II - 39 RAY
2¢ ORANGE RED ON
YELLOW GREEN V LAID
(61L2)



FORGERY C
TAYLOR - FORM AA2
TYPE II - 39 RAY
2¢ ORANGE RED ON
YELLOWISH H LAID
(61L2)



FORGERY C
TAYLOR - FORM AA2
TYPE II - 39 RAY
2¢ ORANGE RED ON
YELLOWISH V LAID
(61L2)

EAGLE CITY POST



FORGERY C
TAYLOR - FORM AA2
TYPE II - 39 RAY
2¢ ORANGE RED
ON WHITE
(61L2)



FORGERY C
TAYLOR - FORM AA2
TYPE II - 39 RAY
2¢ ORANGE
ON WHITE
(61L2)



FORGERY C
TAYLOR - FORM AA2
TYPE II - 39 RAY
2¢ RED ORANGE
ON YELLOWISH
(61L2)



FORGERY C
TAYLOR - FORM AA2
TYPE II - 39 RAY
2¢ RED
ON YELLOWISH
(61L2)



FORGERY C
TAYLOR - FORM AA2
TYPE II - 39 RAY
2¢ BRIGHT RED
ON YELLOWISH
(61L2)



FORGERY C
TAYLOR
TYPE II - 39 RAY
2¢ SALMON ON
YELLOWISH
(61L2)



FORGERY C
TAYLOR
TYPE II - 39 RAY
2¢ PINK ON
YELLOWISH
(61L2)



FORGERY C
TAYLOR
TYPE II - 39 RAY
2¢ ORANGE RED ON
LIGHT ORANGE
(61L2)



FORGERY C
TAYLOR
TYPE II - 39 RAY
2¢ BLACK ON
WHITE V LAID
(61L2)



FORGERY C
TAYLOR
TYPE II - 39 RAY
2¢ GRAY ON
YELLOWISH V LAID
(61L2)

EAGLE CITY POST

Around 1850, Eagle City Post issued small, square stamps that are similar in appearance to the small type Blood's Despatch stamps.

Due to slight variations, the small Eagle City Post stamps, in red and blue, can be identified by plate positions. Five position types are known.



61L3
GENUINE
POSITION 1
1¢ RED
ON WHITE



61L3
GENUINE
POSITION 2
1¢ RED
ON WHITE



61L4
GENUINE
POSITION 1
1¢ BLUE
ON WHITE



61L4
GENUINE
POSITION 3
1¢ BLUE
ON WHITE



61L4
GENUINE
POSITION 4
1¢ BLUE
ON WHITE



61L4
GENUINE
POSITION 5
1¢ BLUE
ON WHITE
PF CERT #536837

Fakes of the small Eagle City Post stamps were printed by several forgers. J.W. Scott was responsible for Forgery A which is identified by its rounded "O" in "POST" and the long thin apostrophe after "Adams".



FORGERY A
SCOTT
1¢ RED (SHADE)
ON THICK WHITE
(61L3)



FORGERY A
SCOTT
1¢ RED (SHADE)
ON THIN WHITE
(61L3)



FORGERY A
SCOTT
1¢ RED (SHADE)
ON CREAM
(61L3)



FORGERY A
SCOTT
1¢ RED (SHADE)
ON CREAM
(61L3)



FORGERY A
SCOTT
1¢ BLUE (SHADE)
ON THICK WHITE
(61L4)



FORGERY A
SCOTT
1¢ BLUE (SHADE)
ON THICK WHITE
(61L4)



FORGERY A
SCOTT
1¢ BLUE (SHADE)
ON THIN WHITE
(61L4)

EAGLE CITY POST

The Eagle City Post small stamp counterfeit known as "forgery B" and its variations are attributed to George Hussey.



FORGERY B
HUSSEY
1¢ RED (SHADE)
ON THICK WHITE
(61L3)



FORGERY B
HUSSEY
1¢ RED (SHADE)
ON MEDIUM WHITE
(61L3)



FORGERY B
HUSSEY
1¢ RED (SHADE)
ON MEDIUM WHITE
(61L3)



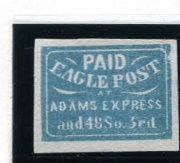
FORGERY B
HUSSEY
1¢ RED (SHADE)
ON MEDIUM WHITE
(61L3)



FORGERY B
HUSSEY
1¢ BLUE (SHADE)
ON THICK WHITE
(61L4)



FORGERY B
HUSSEY
1¢ BLUE (SHADE)
ON THICK WHITE
(61L4)



FORGERY B
HUSSEY
1¢ BLUE (SHADE)
ON MEDIUM WHITE
(61L4)



FORGERY B
HUSSEY
1¢ BLUE (SHADE)
ON MEDIUM WHITE
(61L4)



FORGERY B
HUSSEY
1¢ BLUE (SHADE)
ON THIN WHITE
(61L4)



FORGERY B
HUSSEY
1¢ BLUE (SHADE) ON THIN WHITE
HORIZONTAL STRIP OF FOUR
(61L4)



FORGERY B
HUSSEY
1¢ BLACK (SHADE)
ON THIN WHITE
(61L4)

A variation to forgery B, the bottom of the second "e" in "express" on forgery B1 has a slight downward slant. Below are two examples of this variation.

In addition, the third and fourth examples below represent a further variation - the second "s" in "express" has been re-cut/re-drawn.



FORGERY B1
HUSSEY
1¢ RED (SHADE)
ON THICK WHITE
(61L3)



FORGERY B1
HUSSEY
1¢ BLUE (SHADE)
ON THICK WHITE
(61L4)



FORGERY B1 VAR
HUSSEY
1¢ RED (SHADE)
ON THICK WHITE
(61L3)



FORGERY B1 VAR
HUSSEY
1¢ BLUE (SHADE)
ON THICK WHITE
(61L4)

EAGLE CITY POST

Forgery C was printed by S. A. Taylor. This fake includes a thin rectangular border around the design. It was probably based on the illustration in Moen's catalogue, which was printed within a similar border.



FORGERY C
TAYLOR - FORM 4
1c GREEN
ON WHITE
(61L4)



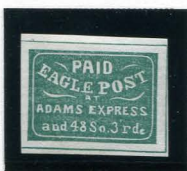
FORGERY C
TAYLOR - FORM 4
1c PALE PURPLE
ON WHITE
(61L4)



FORGERY C
TAYLOR - FORM 4
1c BLACK
ON VIOLET BLUE
(61L4)



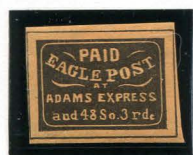
FORGERY C
TAYLOR - FORM 4
1c BLACK
ON GRAY GREEN
(61L4)



FORGERY C
TAYLOR - FORM 4
1c GREEN
ON WHITE H LAID
(61L4)



FORGERY C
TAYLOR - FORM 4
1c PALE PURPLE
ON WHITE H LAID
(61L4)



FORGERY C
TAYLOR - FORM 4
1c BLACK
ON ORANGE BUFF
(61L4)



FORGERY C
TAYLOR - FORM 4
1c BLACKISH BROWN
ON WHITE H LAID
(61L4)



FORGERY C
TAYLOR - FORM 4
1c BLACKISH BROWN
ON WHITE V LAID
(61L4)



FORGERY C
TAYLOR - FORM 7
1c BISTRE BROWN
ON WHITE
(61L3)



FORGERY C
TAYLOR - FORM 7
1c BROWN
ON ORANGE SC
(61L3)



FORGERY C
TAYLOR - FORM 7
1c BROWN
ON GRAY BROWN SC
(61L3)

EAGLE CITY POST



FORGERY C
TAYLOR - FORM 8
1¢ YELLOW
ON WHITE
(61L3)



FORGERY C
TAYLOR - FORM 8
1¢ PURPLE
ON WHITE
(61L4)



FORGERY C
TAYLOR - FORM 8
1¢ PURPLE
ON YELLOW
(61L4)



FORGERY C
TAYLOR - FORM 8
1¢ YELLOW
ON PURPLE
(61L4)



FORGERY C
TAYLOR - FORM 11
1¢ BLUE
ON WHITE
(61L4)



FORGERY C
TAYLOR - FORM 11
1¢ BLUE
ON PINK V LAID
(61L4)



FORGERY C
TAYLOR - FORM AA11
1¢ RED ORANGE
ON WHITE
(61L3)



FORGERY C
TAYLOR - FORM AA11
1¢ BROWN
ON WHITE
(61L4)



FORGERY C
TAYLOR - FORM AA11
1¢ CHOCOLATE
ON WHITE
(61L4)



FORGERY C
TAYLOR
1¢ BLUE (SHADE)
ON WHITE
(61L4)



FORGERY C
TAYLOR
1¢ LIGHT BLUE (SHADE)
ON WHITE
(61L4)



FORGERY C
TAYLOR
1¢ TAUPE
ON WHITE
(61L3)

EAGLE CITY POST

Forgery F is a modern forgery, attributed to Stirling.



FORGERY F
STIRLING
1¢ RED ON
LIGHT YELLOW SC
(61L3)



FORGERY F
STIRLING
1¢ RED ON
DULL YELLOW SC
(61L3)



FORGERY F
STIRLING
1¢ RED
ON BUFF
(61L3)



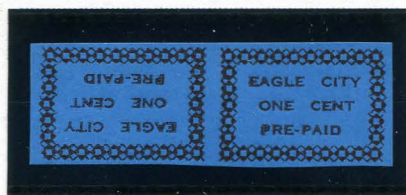
FORGERY F
STIRLING
1¢ RED
ON PINK
(61L3)

EAGLE CITY POST

A bogus stamp design using the Eagle City Post name is known in 1¢ and 2¢ values. These bogus stamps bear no resemblance to any of the original Eagle City Post stamps, and appear to be modern creations.



BOGUS 1
1¢ BLACK
ON LIGHT BLUE SC
PERFORATED



BOGUS 1
1¢ BLACK ON
LIGHT BLUE SC
IMPERFORATE PAIR



BOGUS 1
1¢ BRONZE
ON BRIGHT NAVY SC
DOUBLE PRINTING ERROR



BOGUS 2
2¢ SILVER ON
GREEN SC



BOGUS 2
2¢ SILVER ON
BRIGHT GREEN SC



BOGUS 2
2¢ BLACK ON
BRIGHT GREEN SC



BOGUS 2
2¢ BLACK
ON RED SC



BOGUS 2
2¢ RED BROWN
ON RED SC



BOGUS 2
2¢ RED
ON PINK SC



BOGUS 2
2¢ RED BROWN
ON PINK SC



BOGUS 2
2¢ RED BROWN
ON YELLOW SC

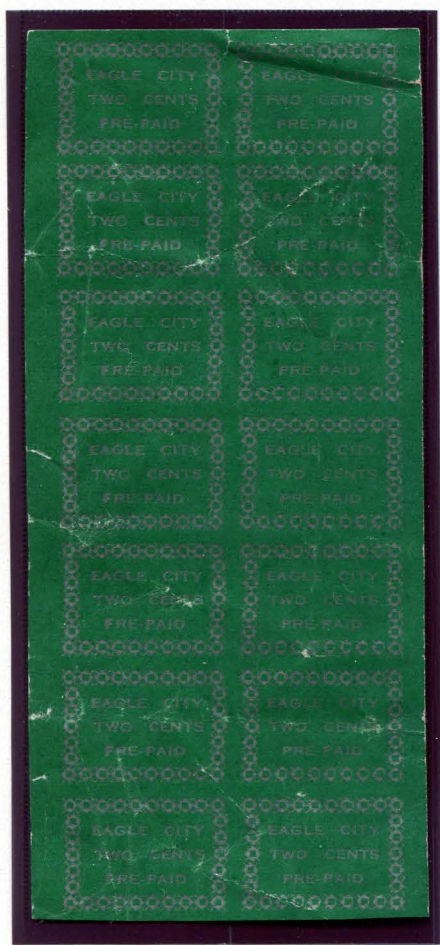


BOGUS 2
2¢ SILVER
ON YELLOW SC



BOGUS 2
2¢ SILVER
ON BLACK SC
PERFORATED

EAGLE CITY POST



BOGUS 2
2¢ SILVER ON GREEN SC
BLOCK OF FOURTEEN



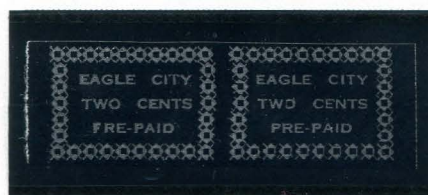
BOGUS 2
2¢ SILVER ON
BRIGHT GREEN SC
VERTICAL PAIR



BOGUS 2
2¢ BLACK ON
BRIGHT GREEN SC
VERTICAL PAIR



BOGUS 2
2¢ RED BROWN
ON RED SC
VERTICAL PAIR



BOGUS 2
2¢ SILVER ON BLACK SC
HORIZONTAL PAIR

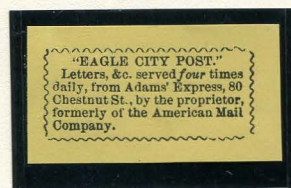
EAGLE CITY POST

Eagle City Post printed small advertising labels to affix to letters and packages passing through their office. Somewhat similar to the advertising labels printed by Blood's Despatch, these adhesive labels were brightly colored rectangles created to encourage further use of their service; they did not provide any payment toward delivery.

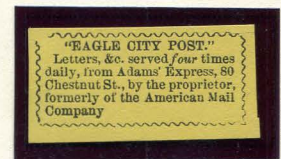
Three types of label can be identified, although they all use the same message. The first type is easily recognized by its smaller font size. The second and third types are more similar and were printed together on the same plate. They are differentiated by variations in the frame and the inclusion of a period after "Company".



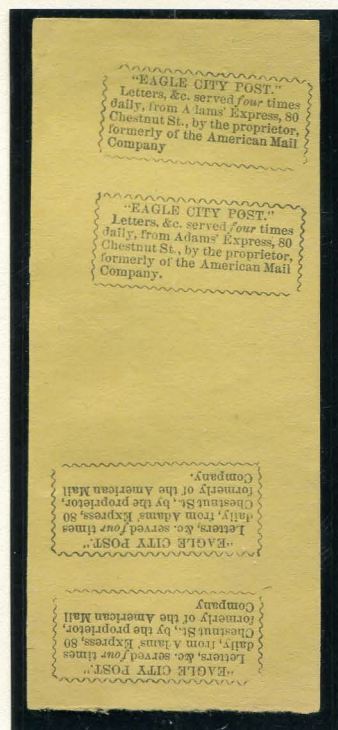
LABEL 1
GENUINE
SMALL FONT



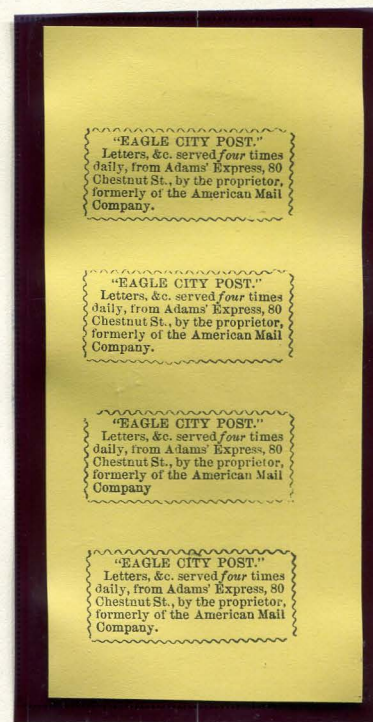
LABEL 2
GENUINE
WITH PERIOD



LABEL 3
GENUINE
WITHOUT PERIOD



LABELS 3 & 2 | 2 & 3
TWO TÊTE-BÊCHE PAIR



LABELS 2, 2, 3, & 2
VERTICAL STRIP OF FOUR

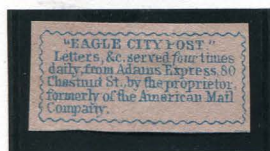
EAGLE CITY POST

This variation on label 1 is missing the "r" in "formerly" (fifth line).

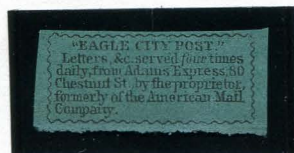


LABEL 1VAR
SMALL FONT

Several Eagle City labels were produced as forgeries. These labels are listed as "Label 4", "Labels 4A", and "Label 5".



LABEL 4A
FORGERY



LABEL 4A
FORGERY

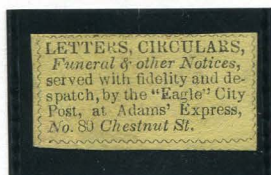


LABEL 4A
FORGERY

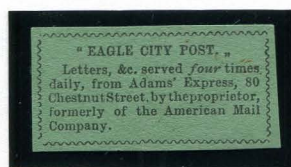


LABEL 4A
FORGERY

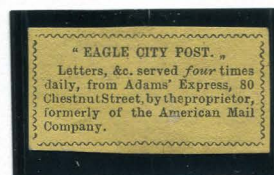
Featured below are unlisted labels using the Eagle City Post name and style.



UNLISTED LABEL



UNLISTED LABEL



UNLISTED LABEL