

THE
MIKE FARRELL
COLLECTION
OF INDEPENDENT MAILES

INCLUDING THE HISTORY, FORGERIES, & FANTASIES OF
UNITED STATES, LOCAL POSTS, CARRIERS,
INDEPENDENT MAIL ROUTES, & EXPRESS CO.S

EARLE & PREW'S EXPRESS

The information and identification within these selections is the individual work of the Farrell Collection. It is always recommended to consult multiple sources for additional information or opinions. Local post company descriptions are based on information available at the time of writing. Descriptions in the Farrell Collection were written based on personal research and sources including, but not limited to: Articles in the Carriers and Locals Society's The Penny Post; Amos Media's Scott Catalogue; Patton's The Private Local Post of the United States; Springer's Handbook of North American Cinderella Stamps; Lyons' Identifier for Carriers, Locals, Fakes Forgeries and Bogus Posts of the United States; articles in the USPCS's The Chronicle; Mosher's Catalog of Private Express Labels and Stamps; The Eastern Independent Mail Company Study Group's Eastern Independent Mail Companies and Express Mail Companies 1840-1845; Elliot Perry's Pat Paragraphs; James N. Drummond's Catalog of Philatelic Miscellany; and the notes of George Sloane and Gordon Stimmell.

Colors listed for stamps and forgeries are the opinions of the Farrell Collection based on viewing physical copies of the pieces under consistent lighting. Colors in the .pdfs may be slightly inaccurate due to manipulations from the scanning process, computer monitor settings, or (in event that the files are printed for offline viewing) the printing process.

Unless otherwise noted, stamps are identified by their Scott Catalogue numbers and forgeries are identified by their Lyons Identifier type. Scott numbers in parenthesis under listed forgeries represent approximately what stamp the forgery is attempting to imitate.

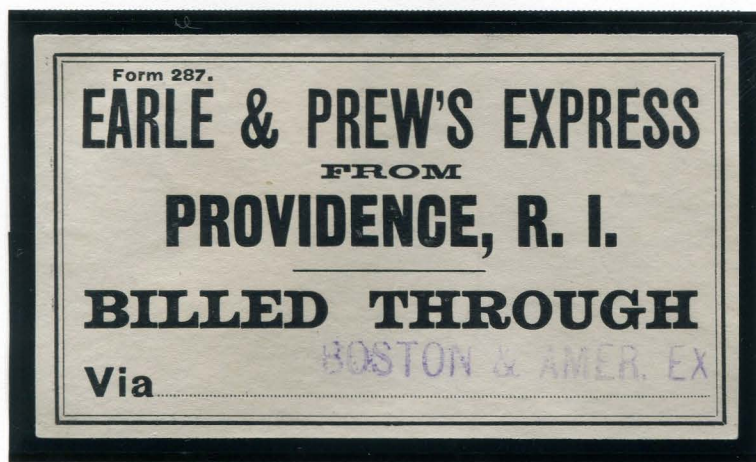
EARLE & PREW'S EXPRESS

COMPANY HISTORY

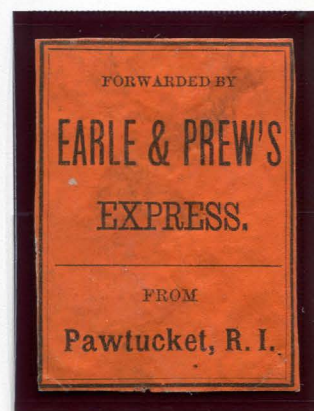
Delivering packages and express mail between Massachusetts, Rhode Island, and Connecticut, this company operated from around 1868 until 1910. A successor to Earle Express Co., they also bought additional lines for their routes, including Kinsley's Express in 1870. The company was absorbed by the Adams Express Co. in 1910.

EXPRESS LABELS

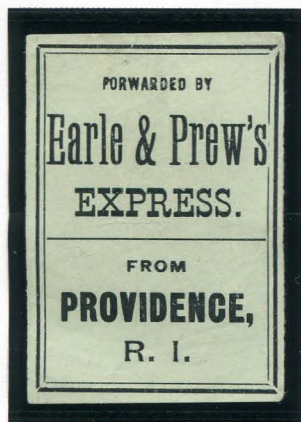
Earl & Prew's Express issued many different types of labels for parcels carried on their lines; and some label types were printed with multiple different city names.



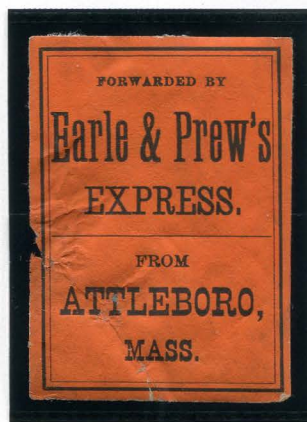
E&PX-L5
 BLACK ON LIGHT BUFF
 BLUE HANDSTAMP : BOSTON & AMER. EX
 IMPERFORATE



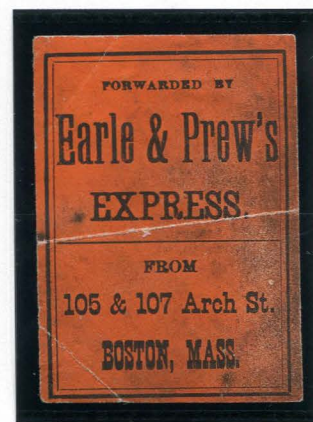
E&PX-L15
 BLACK ON
 ORANGE SC
 PAWTUCKET, R.I
 IMPERFORATE



E&PX-L16
 BLACK ON
 LIGHT YELLOW SC
 PROVIDENCE, R.I
 IMPERFORATE



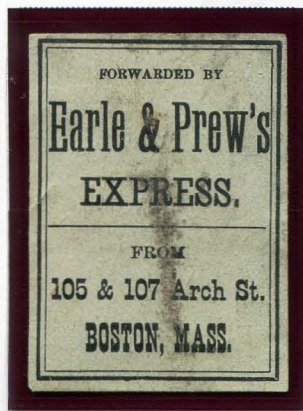
E&PX-L17
 BLACK ON
 ORANGE SC
 ATTLEBORO, MASS
 IMPERFORATE



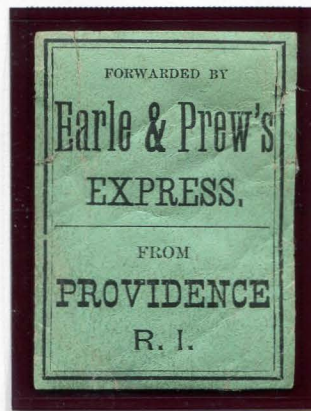
E&PX-L17
 BLACK ON
 ORANGE SC
 BOSTON, MASS.
 IMPERFORATE

EARLE & PREW'S EXPRESS

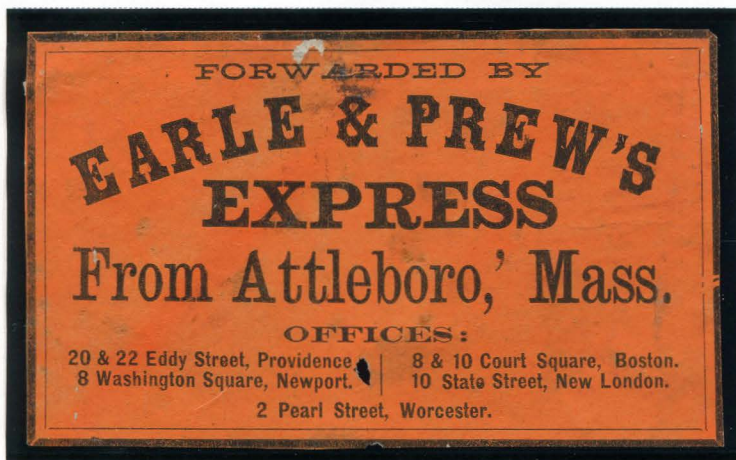
EXPRESS LABELS



E&PX-L17VAR
BLACK ON
PALE GREEN SC
BOSTON, MASS.
IMPERFORATE

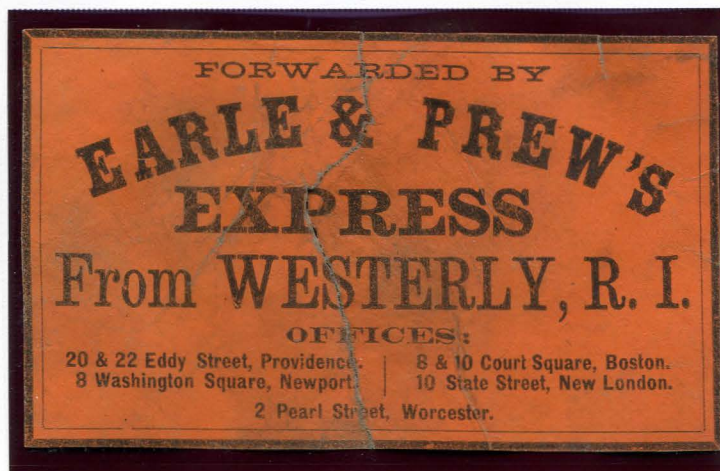


E&PX-L17VAR
BLACK ON
GREEN SC
PROVIDENCE, R.I.
IMPERFORATE



E&PX-L20
BLACK ON
ORANGE SC
ATTLEBORO, MASS.
IMPERFORATE

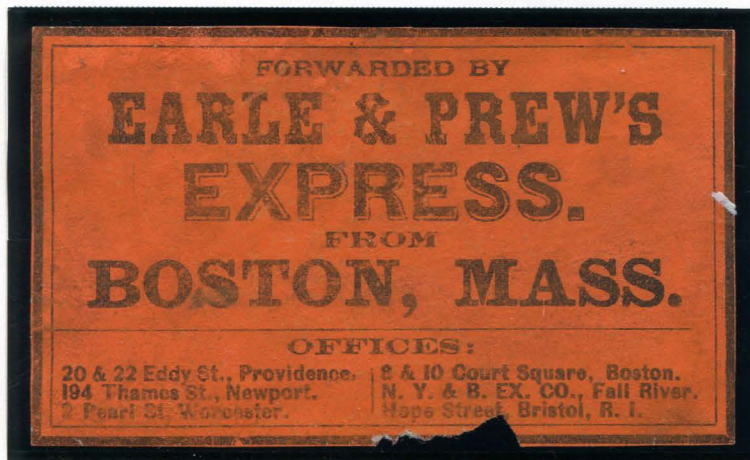
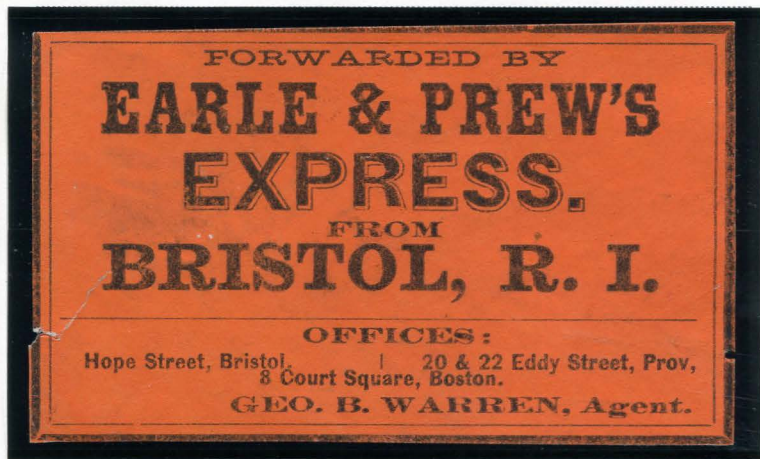
E&PX-L21
BLACK ON
ORANGE SC
WESTERLY, R.I.
IMPERFORATE



EARLE & PREW'S EXPRESS

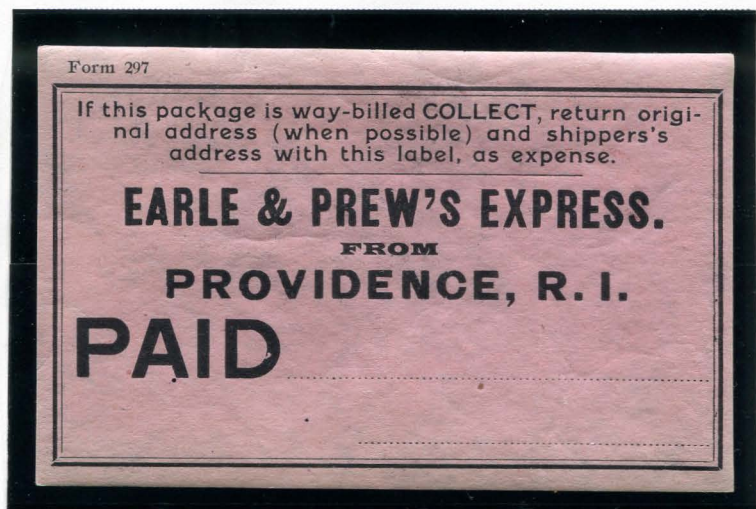
EXPRESS LABELS

E&PX-L25
BLACK ON
ORANGE SC
BRISTOL, R.I.
IMPERFORATE



E&PX-L30
BLACK ON
ORANGE SC
BOSTON, MASS.
IMPERFORATE

E&PX-L40
BLACK ON
VIOLET SC
PROVIDENCE, R.I.
IMPERFORATE



EARLE & PREW'S EXPRESS

EXPRESS LABELS

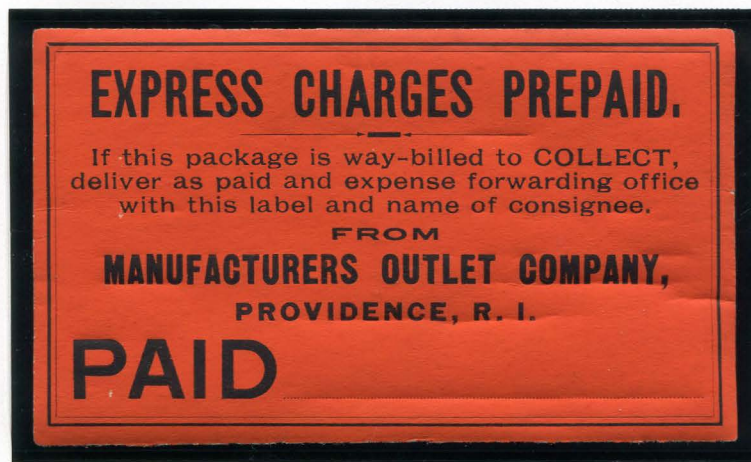


E&PX-L50
BLACK ON
LIGHT AQUA SC
PERF 12

EXPRESS CHARGES PAID LABELS

It is believed (but not proven) that these labels were used for packages on the Earle & Prew's Express route. This is due to their design, which is similar to the label E&PX-L40; and same location, Providence, Rhode Island.

The Manufacturers Outlet Company mentioned on the first of these labels was the original name of The Outlet Company in the 1890s, which was contemporaneous with Earle & Prew's Express.

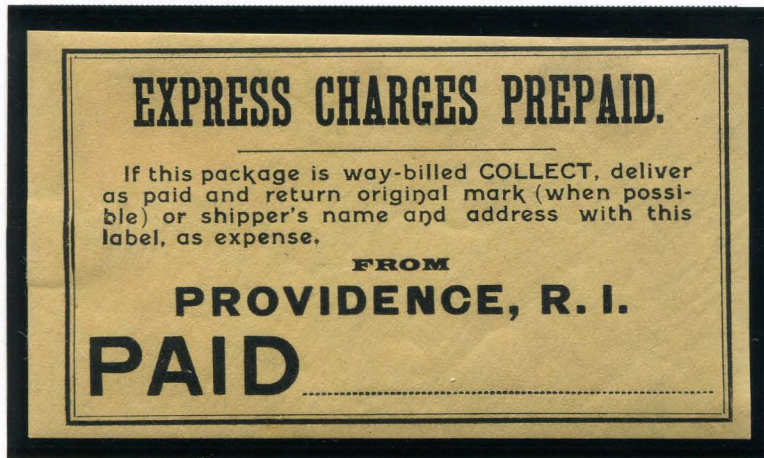
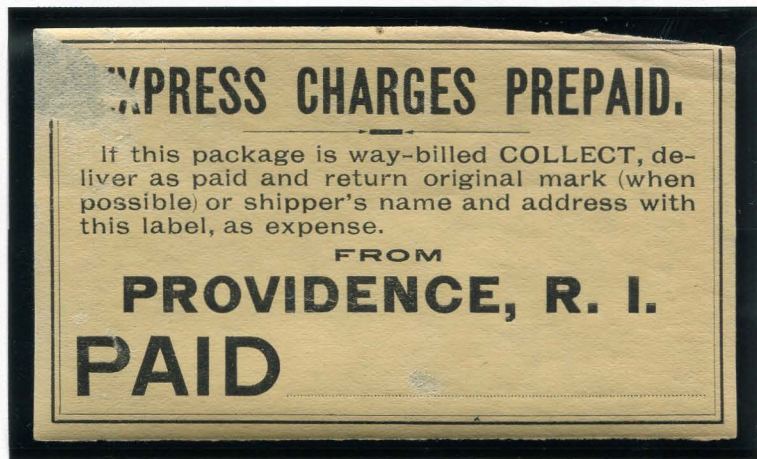


MSCX-L51
BLACK ON ORANGE SC
PROVIDENCE, R.I.
IMPERFORATE

EARLE & PREW'S EXPRESS

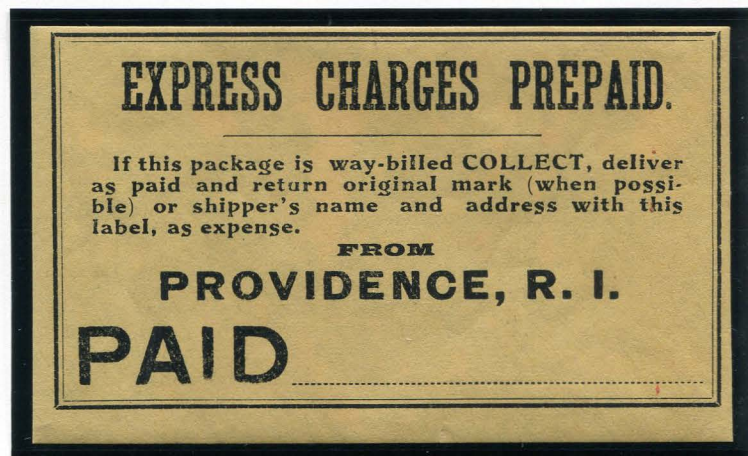
EXPRESS LABELS

MSCX-L51
BLACK ON
YELLOW SC
PROVIDENCE, R.I.
IMPERFORATE



MSCX-L52
BLACK ON
YELLOW SC
PROVIDENCE, R.I.
IMPERFORATE

MSCX-L54
BLACK ON
YELLOW SC
PROVIDENCE, R.I.
IMPERFORATE

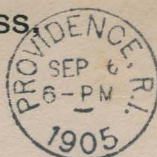


EARLE & PREW'S EXPRESS

CORNER CARD

FORM 84 A

Earle & Prew's Express,
MANAGER'S OFFICE,
PROVIDENCE, R. I.



MR. A. C. HAWKINS,

Lock Box 25,

LANCASTER, MASS.

E&PX-C5 : EARLE & PREW'S EXPRESS CORNER CARD
ON ENVELOPE WITH 319 : 2c CARMINÉ
7-BAR (I R) WAVY LINE MACHINE CANCEL
PROVIDENCE, R.I. - SEPTEMBER 6, 1905