

THE  
MIKE FARRELL  
COLLECTION  
OF INDEPENDENT MAILES

INCLUDING THE HISTORY, FORGERIES, & FANTASIES OF  
UNITED STATES, LOCAL POSTS, CARRIERS,  
INDEPENDENT MAIL ROUTES, & EXPRESS CO.S

ELECTRIC EXPRESS & STORAGE CO.

The information and identification within these selections is the individual work of the Farrell Collection. It is always recommended to consult multiple sources for additional information or opinions. Local post company descriptions are based on information available at the time of writing. Descriptions in the Farrell Collection were written based on personal research and sources including, but not limited to: Articles in the Carriers and Locals Society's The Penny Post; Amos Media's Scott Catalogue; Patton's The Private Local Post of the United States; Springer's Handbook of North American Cinderella Stamps; Lyons' Identifier for Carriers, Locals, Fakes Forgeries and Bogus Posts of the United States; articles in the USPCS's The Chronicle; Mosher's Catalog of Private Express Labels and Stamps; The Eastern Independent Mail Company Study Group's Eastern Independent Mail Companies and Express Mail Companies 1840-1845; Elliot Perry's Pat Paragraphs; James N. Drummond's Catalog of Philatelic Miscellany; and the notes of George Sloane and Gordon Stimmell.

Colors listed for stamps and forgeries are the opinions of the Farrell Collection based on viewing physical copies of the pieces under consistent lighting. Colors in the .pdfs may be slightly inaccurate due to manipulations from the scanning process, computer monitor settings, or (in event that the files are printed for offline viewing) the printing process.

Unless otherwise noted, stamps are identified by their Scott Catalogue numbers and forgeries are identified by their Lyons Identifier type. Scott numbers in parenthesis under listed forgeries represent approximately what stamp the forgery is attempting to imitate.

Copyright Amos Media Company - 2020

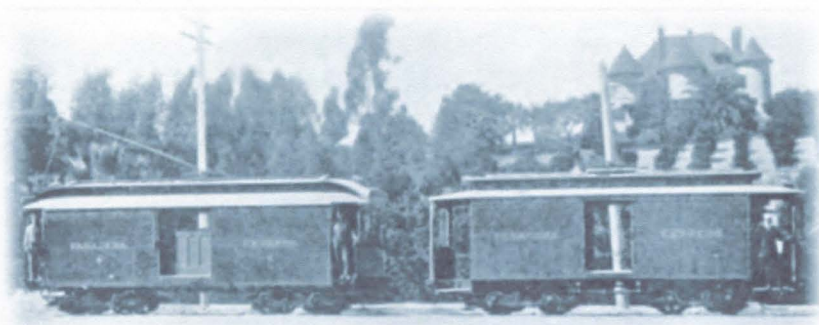
The Scott Numbers are the copyrighted property of Amos Media Company, and are used here under a licensing agreement with Amos. The marks Scott and Scott's are Registered in the U.S. Patent and Trademark Office, and are trademarks of Amos Media Company. No use may be made of these marks or of material in this publication, which is reprinted from a copyrighted publication of Amos Media Company., without the express written permission of Amos Media Company, Sidney, Ohio 45365.



# ELECTRIC EXPRESS & STORAGE CO.

## COMPANY HISTORY

Incorporated in 1897, this express company handled all the express business on the Los Angeles & Pasadena Electric Railway. The company held a ten year contract with the railway with an agreed schedule of four round trips between the cities each weekday. Two express cars ran on the line, and a team of horse-drawn wagons was used to deliver items from the railway offices to destinations within the cities.



PHOTOGRAPH OF THE ELECTRIC EXPRESS & STORAGE Co.'S TWO EXPRESS CARS  
AS PUBLISHED IN THE ELECTRIC RAILWAY REVIEW, DECEMBER 15, 1900

### EXPRESS STAMPS

Electric Express & Storage Co. issued stamps to prepay the delivery of packages on their line. These 10¢ stamps are known in several colors including green, blue, pink, and yellow.



ELCX-S1  
BLACK ON GREEN  
H. PERF 12



ELCX-S1  
BLACK ON GRAY  
H. PERF 12



ELCX-S1  
BLACK ON YELLOW  
H. PERF 12