

THE  
MIKE FARRELL  
❧ COLLECTION ❧  
OF INDEPENDENT MAILS

INCLUDING THE HISTORY, FORGERIES, & FANTASIES OF  
UNITED STATES, LOCAL POSTS, CARRIERS,  
INDEPENDENT MAIL ROUTES, & EXPRESS CO.S

EUREKA EXPRESS CO.

The information and identification within these selections is the individual work of the Farrell Collection. It is always recommended to consult multiple sources for additional information or opinions. Local post company descriptions are based on information available at the time of writing. Descriptions in the Farrell Collection were written based on personal research and sources including, but not limited to: Articles in the Carriers and Locals Society's The Penny Post; Amos Media's Scott Catalogue; Patton's The Private Local Post of the United States; Springer's Handbook of North American Cinderella Stamps; Lyons' Identifier for Carriers, Locals, Fakes Forgeries and Bogus Posts of the United States; articles in the USPCS's The Chronicle; Mosher's Catalog of Private Express Labels and Stamps; The Eastern Independent Mail Company Study Group's Eastern Independent Mail Companies and Express Mail Companies 1840-1845; Elliot Perry's Pat Paragraphs; James N. Drummond's Catalog of Philatelic Miscellany; and the notes of George Sloane and Gordon Stimmell.

Colors listed for stamps and forgeries are the opinions of the Farrell Collection based on viewing physical copies of the pieces under consistent lighting. Colors in the .pdfs may be slightly inaccurate due to manipulations from the scanning process, computer monitor settings, or (in event that the files are printed for offline viewing) the printing process.

Unless otherwise noted, stamps are identified by their Scott Catalogue numbers and forgeries are identified by their Lyons Identifier type. Scott numbers in parenthesis under listed forgeries represent approximately what stamp the forgery is attempting to imitate.

Copyright Amos Media Company - 2020

The Scott Numbers are the copyrighted property of Amos Media Company, and are used here under a licensing agreement with Amos. The marks Scott and Scott's are Registered in the U.S. Patent and Trademark Office, and are trademarks of Amos Media Company. No use may be made of these marks or of material in this publication, which is reprinted from a copyrighted publication of Amos Media Company., without the express written permission of Amos Media Company, Sidney, Ohio 45365.



# EUREKA EXPRESS CO.

## COMPANY HISTORY

The Eureka Express Company was a Western express based in North Bloomfield (Humbug) that served the surrounding Eureka Mining area in Nevada County, California. The company worked closely with Wells, Fargo & Co., and may have acted as a subcontractor for the larger express. Connections with Wells, Fargo & Co. were made at North San Juan and Nevada City, carrying mail and packages beyond Eureka Express's lines. The company operated from around 1870 until 1893.





# EUREKA EXPRESS CO.

## EXPRESS FRANKED ENVELOPES

Eureka Express issued franks printed on US stamped envelopes. These franks were similar in design to the Wells, Fargo & Co. franks used at the time.



EUR-001 - EUREKA EXPRESS CO. FRANK TYPE I  
PRINTED ON U83 : 3¢ GREEN ON AMBER | UPSS 186-2

EUR-002 - EUREKA EXPRESS CO. FRANK TYPE 2  
PRINTED ON U82 : 3¢ GREEN ON WHITE | UPSS 172-2  
WELLS, FARGO & CO. CANCEL 12-3 (WO 1687)





# EUREKA EXPRESS CO.

## EXPRESS FRANKED ENVELOPES

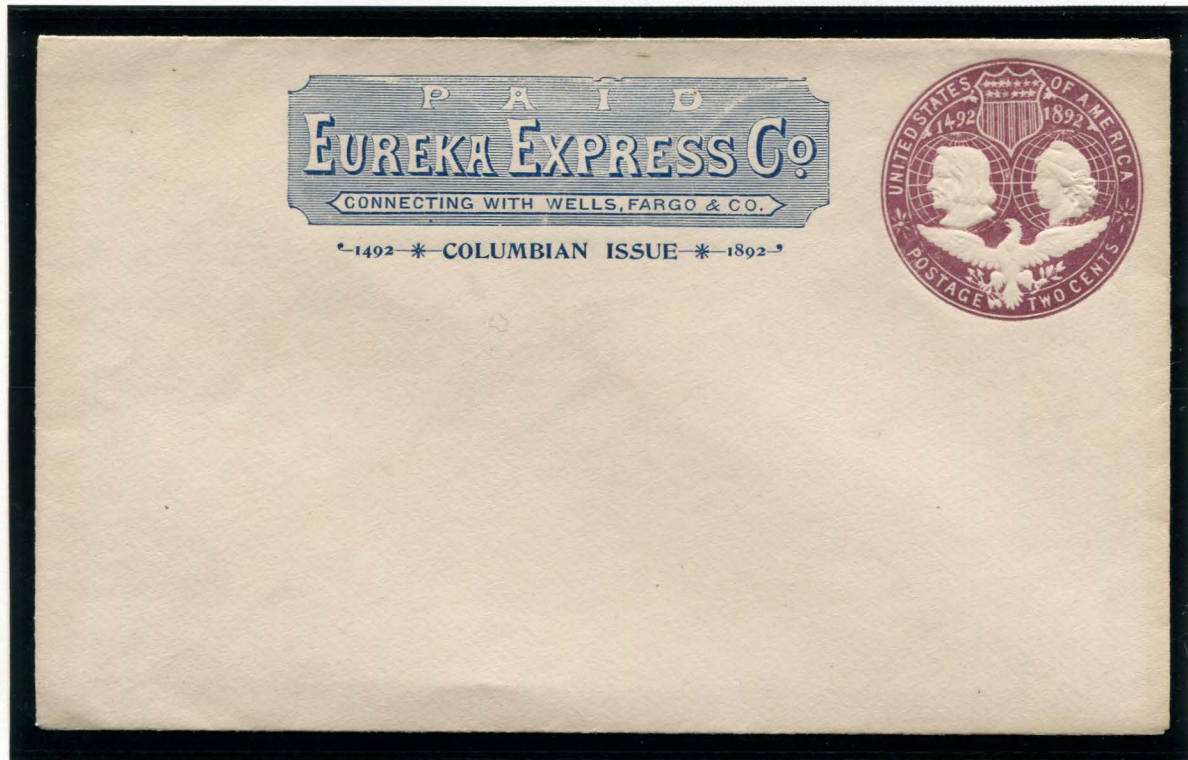


EUR-002 - EUREKA EXPRESS CO. FRANK TYPE 2  
 PRINTED ON U82 : 3¢ GREEN ON WHITE | UPSS 172-2  
 WELLS, FARGO & CO. BOSTON CANCEL 17-10



EUR-002 - EUREKA EXPRESS CO. FRANK TYPE 2  
 PRINTED ON U312 : 2¢ GREEN ON AMBER | UPSS 953-7

EUREKA EXPRESS CO.  
EXPRESS FRANKED ENVELOPES



EUR-003 - EUREKA EXPRESS CO. FRANK TYPE 3  
PRINTED ON U349 : 2¢ VIOLET ON WHITE | UPSS 115-11

Type 3 Eureka Express Company franks use the same style of text as the type 2 franks, but printed in a blue ink and with an additional line of text commemorating the 1892 Columbian Issue stationery.



EUREKA EXPRESS CO.  
EXPRESS FRANKED ENVELOPES



EUR-002 - EUREKA EXPRESS CO. FRANK TYPE 2  
PRINTED ON U95 : 12¢ PLUM ON CREAM | UPSS 232-2

EUREKA EXPRESS CO.  
EXPRESS FRANKED ENVELOPES



EUR-002 - EUREKA EXPRESS CO. FRANK TYPE 2  
PRINTED ON U71 : 24¢ BLUE ON BUFF | UPSS 139-1



EUREKA EXPRESS CO.  
EXPRESS FRANKED ENVELOPES



EUR-002 - EUREKA EXPRESS CO. FRANK TYPE 2  
PRINTED ON U93 : 12¢ PLUM ON WHITE | UPSS 229-2