

THE
MIKE FARRELL
COLLECTION
OF INDEPENDENT MAILS

INCLUDING THE HISTORY, FORGERIES, & FANTASIES OF
UNITED STATES, LOCAL POSTS, CARRIERS,
INDEPENDENT MAIL ROUTES, & EXPRESS CO.S

FLORIDA EXPRESS

The information and identification within these selections is the individual work of the Farrell Collection. It is always recommended to consult multiple sources for additional information or opinions. Local post company descriptions are based on information available at the time of writing. Descriptions in the Farrell Collection were written based on personal research and sources including, but not limited to: Articles in the Carriers and Locals Society's The Penny Post; Amos Media's Scott Catalogue; Patton's The Private Local Post of the United States; Springer's Handbook of North American Cinderella Stamps; Lyons' Identifier for Carriers, Locals, Fakes Forgeries and Bogus Posts of the United States; articles in the USPCS's The Chronicle; Mosher's Catalog of Private Express Labels and Stamps; The Eastern Independent Mail Company Study Group's Eastern Independent Mail Companies and Express Mail Companies 1840-1845; Elliot Perry's Pat Paragraphs; James N. Drummond's Catalog of Philatelic Miscellany; and the notes of George Sloane and Gordon Stimmell.

Colors listed for stamps and forgeries are the opinions of the Farrell Collection based on viewing physical copies of the pieces under consistent lighting. Colors in the .pdfs may be slightly inaccurate due to manipulations from the scanning process, computer monitor settings, or (in event that the files are printed for offline viewing) the printing process.

Unless otherwise noted, stamps are identified by their Scott Catalogue numbers and forgeries are identified by their Lyons Identifier type. Scott numbers in parenthesis under listed forgeries represent approximately what stamp the forgery is attempting to imitate.

Copyright Amos Media Company - 2018

The Scott Numbers are the copyrighted property of Amos Media Company, and are used here under a licensing agreement with Amos. The marks Scott and Scott's are Registered in the U.S. Patent and Trademark Office, and are trademarks of Amos Media Company. No use may be made of these marks or of material in this publication, which is reprinted from a copyrighted publication of Amos Media Company, without the express written permission of Amos Media Company, Sidney, Ohio 45365.

FLORIDA EXPRESS

While there is no proof or documented information indicating that the Florida Express was ever a real post, the classification of this bogus post has been debated. First appearing in the mid 1860's, collectors have wondered if these should be considered local stamps, express labels, or Confederate issues. With no real operation to tie them to, they are generally considered bogus locals.

Although it cannot be completely certain, it's believed that the stamps known as "Bogus 1" are the original design. These have the clearest, most finely executed lines of the known boguses. It is unknown who actually created these stamps.

On the bogus 1 stamps, the scrollwork ornament above the "pre" of "Express" is small and very fine. It is similar in shape to a fleur-de-lis that has been stretched wide and is sometimes described as a "jester's hat" shape - in this design, the center point is separated from the rest of the ornament with a thin outline. Although both the left and right of the horse's reigns are technically visible, they are so close together that they appear as only one curved line. The toe of the rider's boot points slightly toward the ground.



BOGUS 1
PHOTOCOPY, 250%



BOGUS 1
BLACK
ON GRAY BROWN



BOGUS 1
BLACK
ON BUFF



BOGUS 1
BLACK
ON GRAY BUFF



BOGUS 1
BLACK
ON PINKISH



BOGUS 1
BLACK
ON PALE PINK



BOGUS 1
BLACK
ON PALE SALMON



BOGUS 1
BLACK
ON PINK



BOGUS 1
BLACK
ON RED VIOLET

FLORIDA EXPRESS



BOGUS 1
BLACK
ON BROWN



BOGUS 1
BLACK
ON ORANGE



BOGUS 1
BLACK
ON YELLOW



BOGUS 1
BLACK
ON DEEP YELLOW



BOGUS 1
BLACK
ON GREEN



BOGUS 1
BLACK
ON BLUE



BOGUS 1
BLACK
ON DARK BLUE

The printer of the design known as "Bogus 4" is unknown. These stamps are printed on similar papers to those used for the bogus 1 design, indicating that they *may* have been printed by the same person or company. The bogus 4 design shares many of the same characteristics as bogus 1 - It shows only one rein and the boot of the rider is pointed downward.

Aside from the rougher printing, there are other key differences between bogus 4 and bogus 1. The ornament above "Express" is changed to a smaller "shield" or "tulip" like shape. The straps of the rider's bag are also changed from wavy lines to smooth arcs.



BOGUS 4
BLACK
ON WHITE



BOGUS 4
BLACK
ON PINKISH



BOGUS 4
BLACK
ON PINKISH GRAY



BOGUS 4
BLACK
ON CREAM

FLORIDA EXPRESS



BOGUS 4
BLACK
ON GRAY BUFF



BOGUS 4
BLACK
ON TAN



BOGUS 4
BLACK
ON BROWN



BOGUS 4
BLACK
ON BUFF



BOGUS 4
BLACK
ON ORANGE BUFF



BOGUS 4
BLACK
ON LIGHT RED



BOGUS 4
BLACK
ON YELLOW



BOGUS 4
BLACK
ON DEEP YELLOW



BOGUS 4
BLACK
ON PALE GREEN



BOGUS 4
BLACK
ON GREEN



BOGUS 4
BLACK
ON DEEP GREEN



BOGUS 4
BLACK
ON DEEP BLUE



BOGUS 4
BLACK
ON BLUE



BOGUS 4
BLACK
ON LIGHT BLUE



BOGUS 4
BLACK
ON PALE BLUE

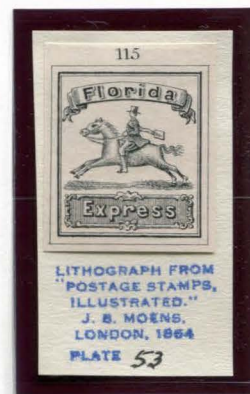


BOGUS 4
BLACK
ON PALE BLUE VIOLET

FLORIDA EXPRESS

J.B. Moens published illustrations of the Florida Express stamp in his philatelic journal, *Le Timbre-Poste*. The first of these illustrations is known as "Bogus 7". These are cuts from his albums and journals, and were not intended to be forgeries. The original lithograph is very well done, with fine detail in the shading. The ornament over "Express" is simplified to look like a solid "jester's hat" shape. Both the left and the right of the horse's reigns are visible, and the toe of the rider's boot is parallel to the ground.

MOENS ALBUM CUT - BOGUS 7
LE TIMBRE-POSTE, 1864



BOGUS 2
AFTER MOENS (1864)
LIGHT RED
ON WHITE



BOGUS 2
AFTER MOENS (1864)
BLACK
ON GOLDEN YELLOW



BOGUS 2
AFTER MOENS (1864)
BLACK
ON LIGHT BLUE



BOGUS 2
AFTER MOENS (1864)
DULL GOLD
ON BLUE SC



BOGUS 2
AFTER MOENS (1864)
BLACK
ON PALE PINK



BOGUS 2
AFTER MOENS (1864)
BLACK
ON PASTEL PINK



BOGUS 2
AFTER MOENS (1864)
BLACK
ON PASTEL YELLOW



BOGUS 2
AFTER MOENS (1864)
BLACK
ON PASTEL GREEN

FLORIDA EXPRESS

S. Allan Taylor printed many of these bogus stamps; his version, known as "Bogus 3" is the most prolific. It is easy to identify this stamp by the protrusion on the upper left of the "o" in "Florida". The Taylor fakes clearly show two reins and the foot of the rider is perpendicular to the ground. The ornament over "Express" is a solid "jester's hat" shape that is so simplified it appears almost like a very wide "M".

Taylor's stamps were printed many times, which resulted in wear to some areas of the die. Some of these flaws appear consistently - they are referred to in this collection as "states", although the exact order in which these flaws developed is not certain.



BOGUS 3 - STATE 1
PHOTOCOPY, 150%
BUMP ON "O"
NO SIGNIFICANT FLAWS



BOGUS 3 - STATE 2
PHOTOCOPY, 150%
BREAK IN RIGHT
BORDER



BOGUS 3 - STATE 3
PHOTOCOPY, 150%
BREAKS AT RIGHT &
LOWER LEFT

The border of the die first wears down on the right side. As this flaw progresses, the die also wears heavily on the lower left border.



BOGUS 3 - STATE 4
PHOTOCOPY, 150%
REENTERED BORDER
w/ DARK BOTTOM
BREAK AT LOWER LEFT



BOGUS 3 - STATE 5
PHOTOCOPY, 150%
REENTERED BORDER
BREAK AT RIGHT
BREAK AT LOWER LEFT



BOGUS 3 - STATE 6
PHOTOCOPY, 150%
REENTERED BORDER
FAST HORSE
MESSY IMPRESSION

At some point, the border was re-entered, and the lower border line is strengthened. This often causes the lower border lines to touch, resulting in a single thick line. Although the right border is initially corrected, the lower left corner is still broken. In the fifth state, the right border is broken again.

As the die wore down, the print quality of the stamps also deteriorated. Later impressions are less clear. In many of these stamp, marks appear around the horse. The marks can vary in appearance, but usually look like movement lines and give the impression that the horse is running very fast.

FLORIDA EXPRESS



BOGUS 3
TAYLOR - FORM 1
BLACK
ON SALMON
STATE 3



BOGUS 3
TAYLOR - FORM 1
BLACK
ON BLUISH
STATE 3



BOGUS 3
TAYLOR - FORM 1
BLACK
ON PALE PINK V LAID
STATE 3



BOGUS 3
TAYLOR - FORM 1
BLACK
ON GREENISH H LAID
STATE 3



BOGUS 3
TAYLOR - FORM 1
BLACK
ON WHITE WMK
STATE 3



BOGUS 3
TAYLOR - (FORM 1)
BLACK
ON RASPBERRY SC WMK
STATE 3



BOGUS 3
TAYLOR - FORM 12
RED
ON GRAY
STATE 3



BOGUS 3
TAYLOR - FORM 12
RED
ON WHITE
STATE 3



BOGUS 3
TAYLOR - FORM 20
GREEN
ON GREEN
STATE 3



BOGUS 3
TAYLOR - FORM 20
GREEN
ON PALE GREEN
STATE 3



BOGUS 3
TAYLOR - FORM 20
DARK GREEN
ON PALE GRAY BROWN
STATE 2

FLORIDA EXPRESS



BOGUS 3
TAYLOR - FORM 21
VIOLET
ON BLUE
STATE 1



BOGUS 3
TAYLOR - FORM AB11
RED VIOLET
ON LIGHT BLUE GREEN
STATE 4



BOGUS 3
TAYLOR - FORM AB11
RED VIOLET
ON YELLOW GREENISH
STATE 4



BOGUS 3
TAYLOR - FORM AB11
RED VIOLET
ON LT. GREENISH LAID
STATE 4



BOGUS 3
TAYLOR - FORM S15
PALE BLUE
ON CREAM
STATE 3



BOGUS 3
TAYLOR - FORM S15
PALE BLUE
ON LIGHT PINK LAID
STATE 3



BOGUS 3
TAYLOR - FORM S16
ORANGE BROWN
ON WHITE
STATE 6



BOGUS 3
TAYLOR - FORM S16
VIOLET BROWN
ON WHITE
STATE 6



BOGUS 3
TAYLOR
PURPLE
ON PALE PINK
STATE 1



BOGUS 3
TAYLOR
LAVENDER
ON PINKISH BUFF
STATE 1



BOGUS 3
TAYLOR
LAVENDER
ON YELLOW
STATE 1



BOGUS 3
TAYLOR
LAVENDER GRAY
ON PINKISH BUFF
STATE 1



BOGUS 3
TAYLOR
BROWN
ON WHITE
STATE 1



BOGUS 3
TAYLOR
RED BROWN
ON ORANGE
STATE 1



BOGUS 3
TAYLOR
RED
ON PALE VIOLET BLUE
STATE 1



BOGUS 3
TAYLOR
RED VIOLET
ON WHITE
STATE 1

FLORIDA EXPRESS



BOGUS 3
TAYLOR
RED
ON CREAM
STATE 1



BOGUS 3
TAYLOR
GREEN
ON YELLOW
STATE 1



BOGUS 3
TAYLOR
BLUE
ON PINK
STATE 1



BOGUS 3
TAYLOR
BLUE
ON WHITE
STATE 1



BOGUS 3
TAYLOR
GRAY
ON BUFF
STATE 1



BOGUS 3
TAYLOR
RED
ON ORANGE LAID
STATE 1



BOGUS 3
TAYLOR
BROWN
ON WHITE
STATE 2



BOGUS 3
TAYLOR
BROWN
ON GRAYISH
STATE 2



BOGUS 3
TAYLOR
BROWN
ON CREAM
STATE 2



BOGUS 3
TAYLOR
RED
ON WHITE
STATE 2



BOGUS 3
TAYLOR
DEEP RED
ON WHITE
STATE 2



BOGUS 3
TAYLOR
GREEN
ON WHITE
STATE 2

FLORIDA EXPRESS



BOGUS 3
TAYLOR
GREEN
ON PALE BUFF
STATE 2



BOGUS 3
TAYLOR
RED
YELLOW H. LAID
STATE 2



BOGUS 3
TAYLOR
BRIGHT RED
ON YELLOW H. LAID
STATE 2



BOGUS 3
TAYLOR
DEEP RED
ON YELLOW H. LAID
STATE 2



BOGUS 3
TAYLOR
DEEP RED
ON BLUE GREEN H. LAID
STATE 2



BOGUS 3
TAYLOR
DEEP RED
BLuish H. LAID
STATE 2



BOGUS 3
TAYLOR
PURPLE
ON WHITE
STATE 3



BOGUS 3
TAYLOR
VIOLET
ON WHITE
STATE 3



BOGUS 3
TAYLOR
VIOLET
ON CREAM
STATE 3



BOGUS 3
TAYLOR
DEEP YELLOW
ON WHITE
STATE 3



BOGUS 3
TAYLOR
YELLOW
ON WHITE
STATE 3



BOGUS 3
TAYLOR
BROWN YELLOW
ON WHITE
STATE 3

FLORIDA EXPRESS



BOGUS 3
TAYLOR
GREEN
ON BUFF
STATE 3



BOGUS 3
TAYLOR
GREEN
ON WHITE
STATE 3



BOGUS 3
TAYLOR
DEEP GREEN
ON CREAM
STATE 3



BOGUS 3
TAYLOR
DEEP GREEN
ON WHITE
STATE 3



BOGUS 3
TAYLOR
GREENISH GRAY
ON WHITE
STATE 3



BOGUS 3
TAYLOR
DARK BLUE
ON WHITE
STATE 3



BOGUS 3
TAYLOR
BLUE
ON WHITE
STATE 3



BOGUS 3
TAYLOR
BLACK
ON VERMILION SC
STATE 3



BOGUS 3
TAYLOR
BROWN
ON TAN
STATE 4



BOGUS 3
TAYLOR
RED
ON PALE TAN
STATE 4



BOGUS 3
TAYLOR
RED
ON BUFF
STATE 4



BOGUS 3
TAYLOR
RED
ON ORANGE BUFF
STATE 4



BOGUS 3
TAYLOR
RED (SHADE)
ON WHITE
STATE 4



BOGUS 3
TAYLOR
RED (SHADE)
ON WHITE
STATE 4



BOGUS 3
TAYLOR
LIGHT RED
ON WHITE
STATE 4



BOGUS 3
TAYLOR
LIGHT RED
ON WHITE - CANCELLED
STATE 4

FLORIDA EXPRESS



BOGUS 3
TAYLOR
DEEP BRIGHT RED
ON WHITE
STATE 4



BOGUS 3
TAYLOR
RED
ON ROUGH OCHRE
STATE 4



BOGUS 3
TAYLOR
RED
ON PINK SC
STATE 4



BOGUS 3
TAYLOR
BLUE
ON TAN
STATE 4



BOGUS 3
TAYLOR
BLUE
ON WHITE LAID
STATE 4



BOGUS 3
TAYLOR
BLACK
ON WHITE
STATE 5



BOGUS 3
TAYLOR
BLACK
ON PALE PINK
STATE 5



BOGUS 3
TAYLOR
BROWN
ON WHITE
STATE 5



BOGUS 3
TAYLOR
BROWN
ON PINK
STATE 5



BOGUS 3
TAYLOR
BROWN
ON LIGHT ORANGE
STATE 5



BOGUS 3
TAYLOR
RED BROWN
ON WHITE
STATE 5



BOGUS 3
TAYLOR
RED
ON LIGHT BLUE
STATE 5



BOGUS 3
TAYLOR
RED
ON WHITE
STATE 5



BOGUS 3
TAYLOR
ORANGE
ON WHITE
STATE 5



BOGUS 3
TAYLOR
DARK GREEN
ON WHITE
STATE 5

FLORIDA EXPRESS



BOGUS 3
TAYLOR
DARK GREEN
ON CREAM
STATE 5



BOGUS 3
TAYLOR
DARK GREEN
ON LIGHT GREEN
STATE 5



BOGUS 3
TAYLOR
DARK GREEN
ON BLUE GREEN
STATE 5



BOGUS 3
TAYLOR
DARK GREEN
ON ORANGE BROWN
STATE 5



BOGUS 3
TAYLOR
BLUE
ON CREAM
STATE 5



BOGUS 3
TAYLOR
BLUE
ON WHITE
STATE 5



BOGUS 3
TAYLOR
BLACK
ON PINK LAID
STATE 5



BOGUS 3
TAYLOR
BROWN (SHADE)
ON GRAYISH WHITE
STATE 6



BOGUS 3
TAYLOR
BROWN (SHADE)
ON GRAYISH WHITE
STATE 6



BOGUS 3
TAYLOR
BROWN (SHADE)
ON WHITE
STATE 6



BOGUS 3
TAYLOR
BLUE
ON YELLOW
STATE 6



BOGUS 3
TAYLOR
BLUE
ON PINK
STATE 6



BOGUS 3
TAYLOR
BLUE
ON WHITE
STATE 6



BOGUS 3
TAYLOR
BLUE
ON CREAM
STATE 6



BOGUS 3
TAYLOR
DEEP BLUE
ON WHITE
STATE 6

FLORIDA EXPRESS



BOGUS 3 - TAYLOR
 BLUE ON WHITE H. LAID (STATE 4)
 FOUR-RING TARGET CANCEL
 - ON COVER WITH -
 207 : 3¢ GREEN
 FOUR-RING TARGET CANCEL
 ST. AUGUSTINE, FLORIDA DOUBLE CIRCLE DATESTAMP
 OCTOBER 24

The cover above was mailed from S. Augustine, Florida to Bellevue Hospital in New York City. At some point after its delivery, a creative philatelist affixed the Florida Express bogus, in an attempt to pass the cover as a genuine usage of the stamp.

FLORIDA EXPRESS

At some point, Moens changed the illustrations in his publications to more closely resemble the Bogus 4 design. In the 1883 edition of *Le Timbre-Poste*, the illustration used is the same design as the fake known as "Bogus 5".



BOGUS 5 - MOENS ALBUM
AS COPIED FROM *LE TIMBRE-POSTE*, 1883

Like bogus 4, bogus 5 has only one visible rein, a downward pointed boot, arced bag straps, and small, tulip-shaped ornament. However, this version is much rougher and less detailed than bogus 4, and the front legs of the horse are slightly curved.



BOGUS 5
AFTER MOENS (1883)
BLACK
ON LIGHT YELLOW



BOGUS 5
AFTER MOENS (1883)
INTENSE BLACK
ON CREAM



BOGUS 5
AFTER MOENS (1883)
GRAY BLACK
ON CREAM



BOGUS 5
AFTER MOENS (1883)
BLACK
ON WHITE - CANCELLED

The bogus at right is currently listed in Mosher's *Catalog of Private Express Covers, Labels and Stamps*. It appears to be a hand-drawn fake, with only a minimal resemblance to the "original" design. This example is ungummed and perforated.



FLAX - L8
HAND DRAWN
BLUE-BLACK
ON WHITE



UNLISTED
ILLUSTRATION
BLACK
ON WHITE

The bogus at left is another unlisted variety. It is printed on paper with text printed on the reverse - likely from some philatelic journal. This illustration is very well done, and appears to mostly copy the characteristics of bogus 1.