

THE
MIKE FARRELL
❧ COLLECTION ❧
OF INDEPENDENT MAILS

INCLUDING THE HISTORY, FORGERIES, & FANTASIES OF
UNITED STATES, LOCAL POSTS, CARRIERS,
INDEPENDENT MAIL ROUTES, & EXPRESS CO.S

FRIEND'S BOARDING SCHOOL

The information and identification within these selections is the individual work of the Farrell Collection. It is always recommended to consult multiple sources for additional information or opinions. Local post company descriptions are based on information available at the time of writing. Descriptions in the Farrell Collection were written based on personal research and sources including, but not limited to: Articles in the Carriers and Locals Society's The Penny Post; Amos Media's Scott Catalogue; Patton's The Private Local Post of the United States; Springer's Handbook of North American Cinderella Stamps; Lyons' Identifier for Carriers, Locals, Fakes Forgeries and Bogus Posts of the United States; articles in the USPCS's The Chronicle; Mosher's Catalog of Private Express Labels and Stamps; The Eastern Independent Mail Company Study Group's Eastern Independent Mail Companies and Express Mail Companies 1840-1845; Elliot Perry's Pat Paragraphs; James N. Drummond's Catalog of Philatelic Miscellany; and the notes of George Sloane and Gordon Stimmell.

Colors listed for stamps and forgeries are the opinions of the Farrell Collection based on viewing physical copies of the pieces under consistent lighting. Colors in the .pdfs may be slightly inaccurate due to manipulations from the scanning process, computer monitor settings, or (in event that the files are printed for offline viewing) the printing process.

Unless otherwise noted, stamps are identified by their Scott Catalogue numbers and forgeries are identified by their Lyons Identifier type. Scott numbers in parenthesis under listed forgeries represent approximately what stamp the forgery is attempting to imitate.

Copyright Amos Media Company - 2021

The Scott Numbers are the copyrighted property of Amos Media Company, and are used here under a licensing agreement with Amos. The marks Scott and Scott's are Registered in the U.S. Patent and Trademark Office, and are trademarks of Amos Media Company. No use may be made of these marks or of material in this publication, which is reprinted from a copyrighted publication of Amos Media Company., without the express written permission of Amos Media Company, Sidney, Ohio 45365.

FRIEND'S BOARDING SCHOOL

The Friend's Boarding School was constructed in 1875 for the education of Quaker children in Ohio. Located on a farm in Barnesville, Ohio, the school opened to forty-five students in January of 1876.



FRIEND'S BOARDING SCHOOL
BUILDING, CIRCA 1876

Students were charged 1¢ per letter to have mail delivered between the school house and the nearest Post Office, located about a mile and a half away. Three types of stamp, in different sizes and fonts, were produced by the school to pay this charge. These stamps, used by the school until 1884, were often affixed to the back of letters, but several covers are known with the stamp affixed near the US postage stamps.



151L1 - TYPE I
1¢ BLACK ON WHITE
GENUINE ON COVER MAILED WITH
158 : 3¢ GREEN
QUARTERED CORK CANCELLATION
BARNESVILLE, OHIO DATESTAMP - JANUARY 3 (1878)
PHILADELPHIA, PENNSYLVANIA RECEIVING STAMP (REVERSE) - JANUARY 4 (1878)

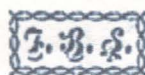
FRIEND'S BOARDING SCHOOL

The type II stamp, shown on the cover below, has wide margins and thin, simple letters. This cover represents a late usage of the Friend's Boarding School stamp.

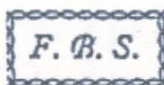


151L1 - TYPE II
1¢ BLACK ON WHITE
GENUINE ON COVER MAILED WITH
210 : 2¢ RED BROWN
STAR IN CIRCLE (SAND DOLLAR) CANCELLATION
BARNESVILLE, OHIO DATESTAMP - JUNE 30, 1884

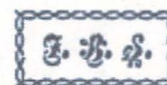
ILLUSTRATION OF STAMP TYPES



TYPE I



TYPE II



TYPE III