

GLEN HAVEN DAILY MAIL

By 1848, Glen Haven, located at the head of Skaneateles Lake in New York, was a famous Water Cure resort area, known for its sanitariums. Not only a popular vacation spot, Glen Haven was a gathering place for those interested in social movements of the time, such as dress reform and antislavery.

Around 1854, the managements of the area hotels and sanitariums established a small local post for the purpose of delivering their patron's mail to the nearest post offices in either Homer or Scott, New York. Four types of stamp were produced by the post, each with a different decorative border. The stamps for this post were used in conjunction with government stamps.

The post ran until around 1858. Many years later, in 1910, the whole of Glen Haven would shut down as well. The city of Syracuse purchased the land and destroyed its buildings to develop a reservoir.



AT RIGHT: ENGRAVING OF GLEN HAVEN
PUBLISHED IN STORKE'S HISTORY OF
CAYUGA COUNTY, 1879.

Below is an example of a Type 1 Glen Haven stamp. This stamp, tied to piece with a US 3¢ stamp, is one of the very few genuine Type 1 stamps. The border of the first Glen Haven stamps was made of six bars and corner ornaments that are squares of nine circles.

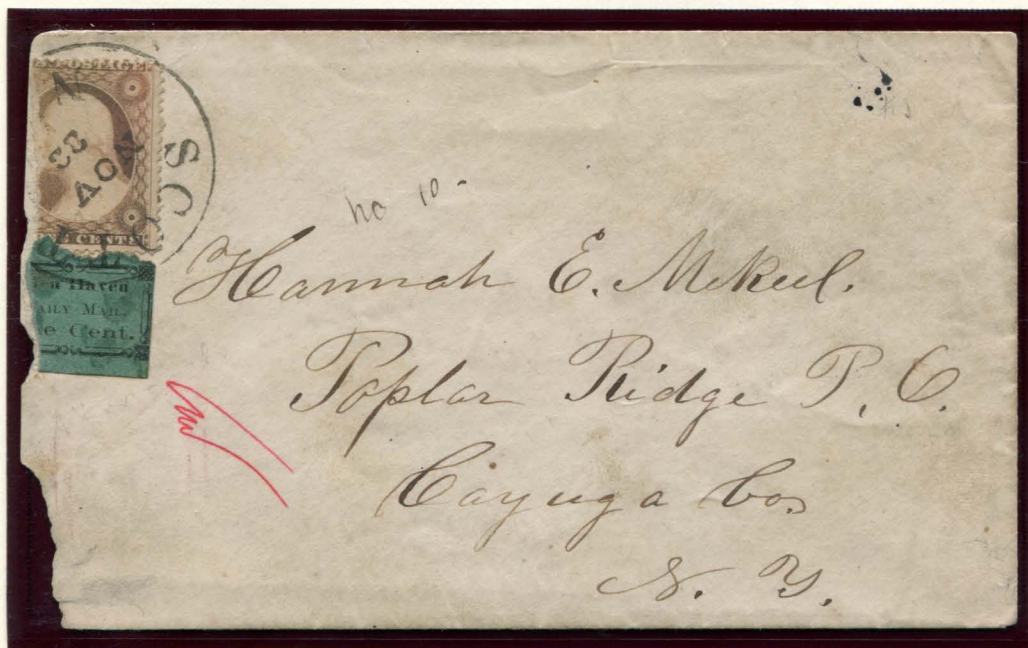


71L1
GENUINE
1¢ BLACK
ON DARK GREEN
APEX #156061

WITH
26 : 3¢ DULL RED

GLEN HAVEN DAILY MAIL

The cover below was mailed from Glen Haven to the post office in Scott with a Type I stamp. At the Scott post office, both the Glen Haven stamp and the 3¢ US postage stamp were cancelled by a circular date stamp before being delivered through the US post to Poplar Ridge, New York.



71L1 - TYPE I
1¢ BLACK ON DARK GREEN
GENUINE ON COVER
- MAILED WITH -
26 : 3¢ DULL RED
BLACK SCOTT, NEW YORK CDS - NOVEMBER 22

The second Glen Haven Daily Mail stamp was printed on green surface colored paper. It featured more decorative fonts, and a border of eight decorative ornaments.



71L2 - TYPE II
GENUINE
1¢ BLACK
ON GREEN SC

GLEN HAVEN DAILY MAIL

The third type of Glen Haven Daily Mail stamp, is actually a variety of stamps. These stamps share a chain link border, but are known with several different corner ornaments.



71L4 : 1¢ BLACK ON GREEN GLAZED SURFACE PAPER
TYPE IIIA
GENUINE ON COVER
U9 : 3¢ RED - NESBITT ENVELOPE
BLACK SCOTT, NEW YORK CDS - MAY 29

The cover above was sent to the Scott post office with a Type IIIa Glen Haven stamp. The Type IIIa stamp is identified by diamond-shaped corner ornaments in all four corners.



ENLARGED PHOTOCOPY OF
TYPE IIIA
CORNER ORNAMENTS

GLEN HAVEN DAILY MAIL



71L4 : 1¢ BLACK ON GREEN GLAZED SURFACE PAPER
 TYPE IIIb
 GENUINE ON COVER
 U9 : 3¢ RED - NESBITT ENVELOPE
 BLACK SCOTT, NEW YORK CDS - JULY 21

The cover above was mailed with a Type IIIb Glen Haven stamp. The Type IIIb stamp is identified by a circular ornament in the top left corner, and diamond-shaped ornaments in the other three corners.



ENLARGED PHOTOCOPY OF
 TYPE IIIb
 CORNER ORNAMENTS

GLEN HAVEN DAILY MAIL

The fourth type of Glen Haven Daily Mail stamp has a chain-link border with no corner ornaments. There are several known variations on stamps, four of which are recorded and listed as Type IVa - Type IVd.



71L3 - TYPE IVc
DROPPED "C" & "T"
IN "CENT"
GENUINE
1¢ BLACK
ON GREEN SC



71L3 - TYPE IVvar
ONLY ONE DOT IN THIRD
CHAIN LINK AT TOP
GENUINE
1¢ BLACK
ON GREEN SC



71L3 - TYPE IVb
DROPPED "T" IN "CENT" | RAISED PERIOD AFTER "MAIL"
1¢ BLACK ON GREEN GLAZED SURFACE PAPER
GENUINE ON COVER
U9 : 3¢ RED - NESBITT ENVELOPE
BLACK GIRARD, OHIO CDS - JULY 26

The cover above represents a usage of the stamp to deliver mail into Glen Haven. The 3¢ stamped envelope was cancelled in Girard, Ohio, and directed *via Buffalo* through the mail to Homer, New York. From there the uncanceled Glen Haven Daily Mail stamp paid for the letter's delivery into the town (noted in parenthesis under the recipient's name.)

GLEN HAVEN DAILY MAIL

J. W. Scott illustrated all four main types of the "Glen Haven Daily Mail" stamps in his albums, including four varieties of the "Type III" stamp. These varieties all have different corner ornaments than any of the real stamps. The "Type I" design is missing the period after "Mail", and both the "Type II" and "Type IV" designs use a mostly unsersified typeface for "GLEN HAVEN" and "ONE CENT".



TYPES I - IIb - IIc - IIg - IV - IIIa - II
 FORGERY A (TYPES I, II, III) & FORGERY B (TYPE IV)
 SCOTT - ALBUM CUT
 1¢ BLACK ON CREAM
 (71L1 - 71L4 - 74L4 - 71L4 - 71L3 - 71L4 - 71L2)



TYPE I - FORGERY A
 SCOTT
 1¢ BLACK
 ON DARK GREEN
 (71L1)



TYPE IV - FORGERY B
 SCOTT
 1¢ BLACK
 ON DARK GREEN
 (71L3)

S. A. Taylor only produced forgeries of the "Type IV" stamp. There are various ways to tell this forgery apart, such as the typefaces being completely different for both "GLEN HAVEN" and "Daily Mail", and the colons in the chain links at the top and bottom are missing.



TYPE IV - FORGERY A
 TAYLOR - FORM C
 1¢ DULL RED
 ON WHITE
 (71L3)



TYPE IV - FORGERY A
 TAYLOR - FORM C
 1¢ BLACK
 ON YELLOW
 (71L3)



TYPE IV - FORGERY A
 TAYLOR - FORM C
 1¢ BLACK
 ON GREEN SC
 (71L3)



TYPE IV - FORGERY A
 TAYLOR - FORM C
 1¢ RED
 ON PALE PINK H LAID
 (71L3)



TYPE IV - FORGERY A
 TAYLOR - FORM CC4
 1¢ BLACK
 ON WHITE
 (71L3)



TYPE IV - FORGERY A
 TAYLOR - FORM CC4
 1¢ BLACK
 ON VIOLET
 (71L3)



TYPE IV - FORGERY A
 TAYLOR - FORM CC4
 1¢ BLACK
 ON VERMILION SC
 (71L3)



TYPE IV - FORGERY A
 TAYLOR - FORM CC4
 1¢ BLACK
 ON PEACH H LAID
 (71L3)