

THE
MIKE FARRELL
COLLECTION
OF PRIVATE US MAIL SERVICES
INCLUDING THE HISTORY, FORGERIES, & FANTASIES OF
UNITED STATES LOCAL POSTS, CARRIERS,
INDEPENDENT MAIL ROUTES, & EXPRESS CO.S

HARTFORD MAIL ROUTE



The information and identification within these selections is the individual work of the Farrell Collection. It is always recommended to consult multiple sources for additional information or opinions. Local post histories and descriptions are based on information available at the time of writing.

Descriptions in the Farrell Collection were written based on personal research and sources including, but not limited to: Articles in the Carriers and Locals Society's *The Penny Post*; Amos Media's *Scott Catalogue*; Patton's *The Private Local Post of the United States*; Springer's *Handbook of North American Cinderella Stamps*; Lyons' *Identifier for Carriers, Locals, Fakes Forgeries and Bogus Posts of the United States*; articles in the USPS's *The Chronicle*; Mosher's *Catalog of Private Express Labels and Stamps*; The Eastern Independent Mail Company Study Group's *Eastern Independent Mail Companies and Express Mail Companies 1840-1845*; the United Postal Stationery Society's *The Western Express Companies 1850-1890 A Catalog of Their Franks and Hand Stamps*; Elliot Perry's *Pat Paragraphs*; James N. Drummond's *Catalog of Philatelic Miscellany*; auction lot descriptions from Seigel Auction Galleries, Kelleher Auctions, H.R. Harmer, and Schuyler Rumsey Philatelic Auctions; in-period directories and newspaper archives; and the notes of George Sloane and Gordon Stimmell.

Colors listed for stamps and forgeries are the opinions of the Farrell Collection based on viewing physical copies of the pieces under consistent lighting. Colors in the .pdfs may be slightly inaccurate due to manipulations from the scanning process, computer monitor settings, or (in event that the files are printed for offline viewing) the printing process.

Unless otherwise noted, stamps are identified by their Scott Catalogue numbers and forgeries are identified by their Lyons Identifier type. Express labels and forgeries are identified by their Mosher's Catalog numbers. Western express franks are identified by their listing in the United States Postal Stationery Society catalog. Scott numbers in parenthesis under listed forgeries represent approximately what stamp the forgery is attempting to imitate.

Copyright Amos Media Company - 2022

The Scott Numbers are the copyrighted property of Amos Media Company, and are used here under a licensing agreement with Amos. The marks Scott and Scott's are Registered in the U.S. Patent and Trademark Office, and are trademarks of Amos Media Company. No use may be made of these marks or of material in this publication, which is reprinted from a copyrighted publication of Amos Media Company., without the express written permission of Amos Media Company, Sidney, Ohio 45365.

HARTFORD MAIL ROUTE

This independent mail route served between Hartford, Connecticut and nearby cities including New York, Boston and Philadelphia. It operated from 1844 to 1845.

This service likely worked under Hale & Co., who first set up in Hartford around 1844. Hale & Co. agents routed the delivery of mail by organizing exchanges with multiple independent express companies. In Hartford, mail to and from New Haven and New York City was carried by Phillips & Co.'s Express; mail to and from Springfield, Albany, and Boston was carried by Thompson's Express. Francis A. Fuller, who worked as an agent for both express companies, probably arranged letter mail exchanges between the companies on behalf of Hale & Co.

Although Fuller most likely worked under Hale & Co., what made his "Hartford Mail Route" or "Hartford Letter Mail" branch unique was the use of their own postage stamps. These small stamps were printed from an engraved copper plate of twelve subjects, arranged in two columns of six. Each stamp has slightly different features, and genuine stamps can be identified by position. Edward Parsons, a local bookseller, is believed to be the printer of the stamps.

Stamps were often marked in manuscript with the direction of their delivery: North, South, East, West, and Hartford. The most commonly marked direction is "South," for deliveries to New York City.



80L1
GENUINE
5¢ BLACK
ON YELLOW
POSITION 4
MS: SOUTH



80L1
GENUINE
5¢ BLACK
ON YELLOW
POSITION 6
MS: SOUTH



80L1
GENUINE
5¢ BLACK
ON YELLOW
POSITION 9



80L1
GENUINE
5¢ BLACK
ON YELLOW
POSITION 10
MS: SOUTH
PF# 448232



80L1
GENUINE
5¢ BLACK
ON YELLOW
POSITION 11
APEX# 84588



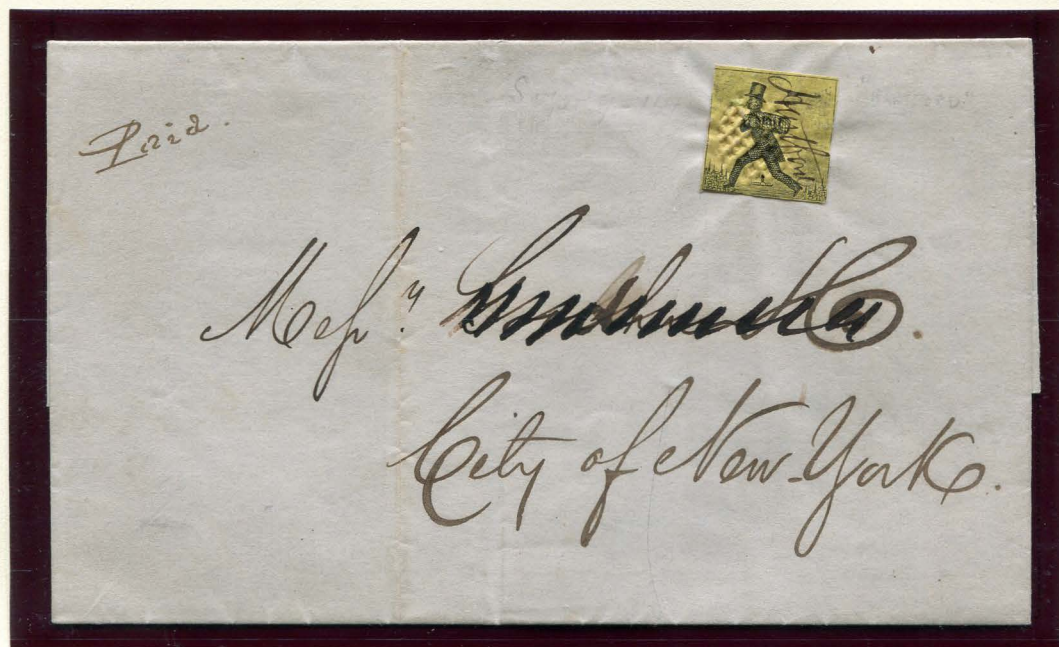
80L1
GENUINE
5¢ BLACK
ON YELLOW
POSITION 6
"BUFF" FADED PAPER

Stamps were printed in black on yellow or pink paper. The die used to produce the yellow paper stamps can be chemically faded to a "buff" color when exposed to camphor.

The stamps were sold at twenty for \$1 - the same rate as Hale & Co. stamps.

HARTFORD MAIL ROUTE

The cover below was mailed from Hartford to New York City, paid with a yellow stamp marked "Hartford" in manuscript. This represents a scarce example of a "Hartford" cancelled stamp. The stamp was affixed with a wax wafer and embossing instrument.



80L1 : 5¢ BLACK ON YELLOW
GENUINE ON COVER - POSITION 3
MANUSCRIPT "HARTFORD"
"PAID" MANUSCRIPT
SEPTEMBER 9, 1844 (DOCKETED)

This cover was part of the Goodhue correspondence; it was previously of the Mason, Ackerman, and Schwartz collections.

HARTFORD MAIL ROUTE

J.W. Scott printed forgeries of the Hartford stamps based on the illustrations he published in his stamp collectors albums. The Scott forgeries were printed in varying quality, with some prints sharper and more clear than others.



FORGERY A
SCOTT
1888 ALBUM ILLUSTRATION
5¢ BLACK ON CREAM



FORGERY A
SCOTT
ALBUM ILLUSTRATION
WITH SPACE FOR "PINK"
5¢ BLACK ON THICK CREAM



FORGERY A
SCOTT
5¢ BLACK
ON YELLOW SC



FORGERY A
SCOTT
5¢ BLACK
ON YELLOW SC



FORGERY A
SCOTT
5¢ BLACK
ON YELLOW SC



FORGERY A
SCOTT
5¢ BLACK
ON YELLOW SC



FORGERY A
SCOTT
5¢ BLACK
ON PINK SC



FORGERY A
SCOTT
5¢ BLACK
ON PINK SC



FORGERY A
SCOTT
5¢ BLACK
ON PINK SC

HARTFORD MAIL ROUTE

S. Allan Taylor's forgeries for Hartford Mail Route are known as "Forgery B". They are printed in a variety of colors.



FORGERY B
TAYLOR - FORM 19
5c BLACK
ON GREEN SC
(80L1)



FORGERY B
TAYLOR - FORM 19
5c BLACK
ON VERMILION SC
(80L1)



FORGERY B
TAYLOR - FORM AB1
5c BLACK
ON YELLOW
(80L1)



FORGERY B
TAYLOR - FORM AB1
5c BLACK
ON GOLD YELLOW
(80L1)



FORGERY B
TAYLOR - FORM AB1
5c BLACK
ON PINK
(80L1)



FORGERY B
TAYLOR - FORM AB1
5c BLACK
ON BLUE
(80L1)



FORGERY B
TAYLOR - FORM AB1
5c BLACK
ON GREEN
(80L1)

HARTFORD MAIL ROUTE

These facsimile stamps were printed by Fox & Co., a Hartford department store, as souvenirs for the centennial of their founding.

To _____

HAD YOU RECEIVED THIS LETTER IN 1847 IT WOULD HAVE CARRIED THE HARTFORD LOCAL STAMP WHICH WOULD HAVE BROUGHT IT TO YOU QUICKER THAN ANY OTHER KNOWN WAY AT THAT TIME. YOU MAY WISH TO PRESERVE THIS REPRODUCTION OF THE UNIQUE STAMP THAT PRE-DATES UNITED STATES OFFICIAL POSTAGE.

DESCRIPTION CARD

FORGERY E
FOX & CO.
5¢ BLACK
ON YELLOW

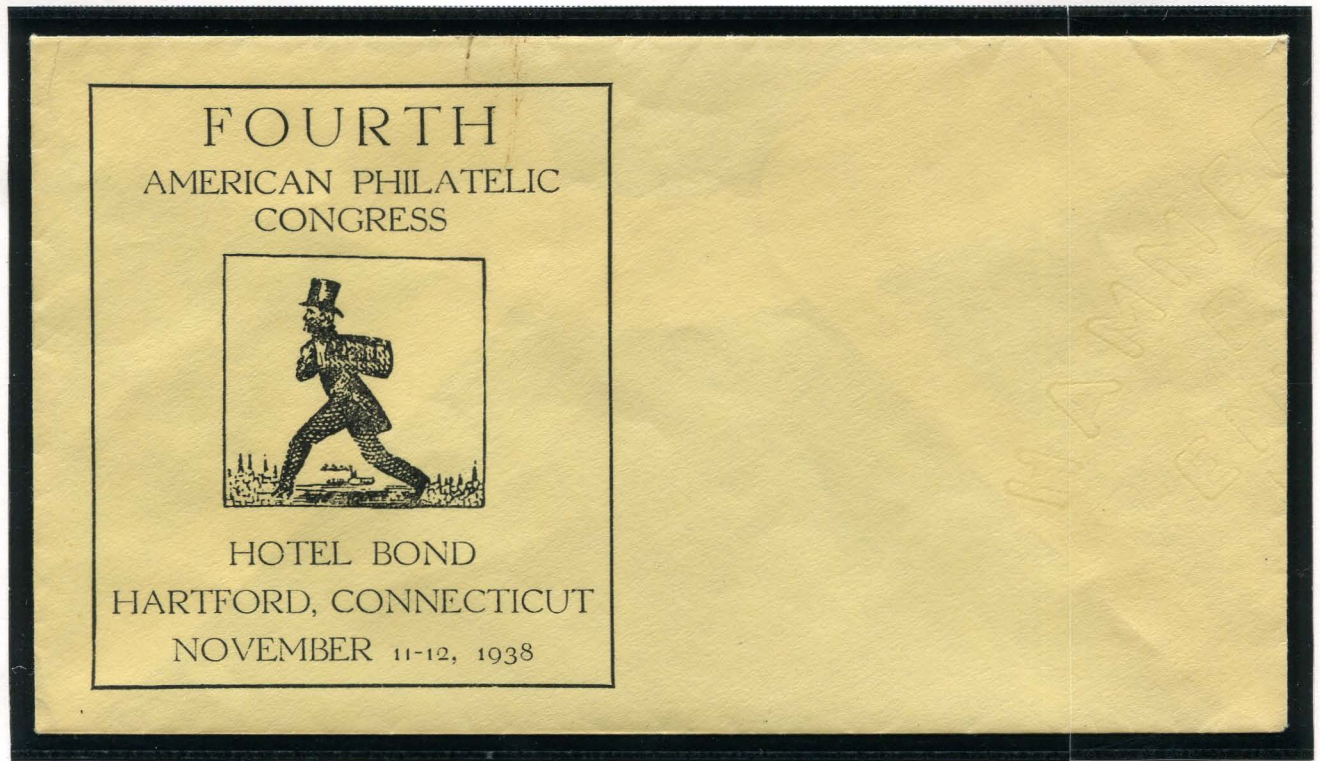
The unlisted forgery below appears to be cut from a catalogue or album.



FORGERY
UNLISTED
5¢ BLACK
ON WHITE
(80L1)



HARTFORD MAIL ROUTE



HARTFORD MAIL ROUTE FACSIMILE
FOURTH AMERICAN PHILATELIC CONGRESS CACHET

The cachet on the envelope above features an enlarged facsimile of the Hartford Mail Route stamp. It was printed for the Fourth American Philatelic Congress, hosted in Hartford, Connecticut.

HARTFORD MAIL ROUTE

In addition to his forgeries, S.A. Taylor also produced two bogus stamps using the "Hartford" name. These "Hartford Daily Mail" stamps are completely different from the genuine Hartford stamps - they are only text and scroll-work design with no image.



BOGUS 1
TAYLOR - FORM B5
5¢ VIOLET
ON WHITE



BOGUS 1
TAYLOR - FORM B5
5¢ VIOLET
ON CREAM

The two Taylor "Hartford" boguses are very similar in design, but the second has more decorative scrollwork ornaments.



BOGUS 2
TAYLOR - FORM 4
5¢ BLACK
ON VIOLET BLUE



BOGUS 2
TAYLOR - FORM 4
5¢ BLACK
ON GRAY GREEN



BOGUS 2
TAYLOR - FORM 4
5¢ GREEN
ON WHITE



BOGUS 2
TAYLOR - FORM 4
5¢ PALE PURPLE
ON WHITE



BOGUS 2
TAYLOR - FORM 4
5¢ PALE PURPLE
ON WHITE LAID

HARTFORD MAIL ROUTE



BOGUS 2
TAYLOR - FORM 4
5¢ BLACK
ON ORANGE BUFF



BOGUS 2
TAYLOR - FORM 4
5¢ BLACKISH BROWN
ON WHITE H. LAID



BOGUS 2
TAYLOR - FORM 4
5¢ BLACKISH BROWN
ON WHITE V. LAID



BOGUS 2
TAYLOR
5¢ BLUE
ON WHITE



BOGUS 2
TAYLOR
5¢ VIOLET (SHADE)
ON WHITE



BOGUS 2
TAYLOR
5¢ VIOLET (SHADE)
ON WHITE



BOGUS 2
TAYLOR
5¢ PURPLE
ON WHITE

The unlisted bogus stamp/handstamp below is based on the Harnden Express labels, but uses the fake Hartford Daily Mail name.



BOGUS 2
TAYLOR
5¢ BLUE
ON WHITE