

THE
MIKE FARRELL
❧ COLLECTION ❧
OF INDEPENDENT MAILS

INCLUDING THE HISTORY, FORGERIES, & FANTASIES OF
UNITED STATES, LOCAL POSTS, CARRIERS,
INDEPENDENT MAIL ROUTES, & EXPRESS CO.S

HOPEDALE PENNY POST

The information and identification within these selections is the individual work of the Farrell Collection. It is always recommended to consult multiple sources for additional information or opinions. Local post company descriptions are based on information available at the time of writing. Descriptions in the Farrell Collection were written based on personal research and sources including, but not limited to: Articles in the Carriers and Locals Society's The Penny Post; Amos Media's Scott Catalogue; Patton's The Private Local Post of the United States; Springer's Handbook of North American Cinderella Stamps; Lyons' Identifier for Carriers, Locals, Fakes Forgeries and Bogus Posts of the United States; articles in the USPCS's The Chronicle; Mosher's Catalog of Private Express Labels and Stamps; The Eastern Independent Mail Company Study Group's Eastern Independent Mail Companies and Express Mail Companies 1840-1845; Elliot Perry's Pat Paragraphs; James N. Drummond's Catalog of Philatelic Miscellany; and the notes of George Sloane and Gordon Stimmell.

Colors listed for stamps and forgeries are the opinions of the Farrell Collection based on viewing physical copies of the pieces under consistent lighting. Colors in the .pdfs may be slightly inaccurate due to manipulations from the scanning process, computer monitor settings, or (in event that the files are printed for offline viewing) the printing process.

Unless otherwise noted, stamps are identified by their Scott Catalogue numbers and forgeries are identified by their Lyons Identifier type. Scott numbers in parenthesis under listed forgeries represent approximately what stamp the forgery is attempting to imitate.

Copyright Amos Media Company - 2018

The Scott Numbers are the copyrighted property of Amos Media Company, and are used here under a licensing agreement with Amos. The marks Scott and Scott's are Registered in the U.S. Patent and Trademark Office, and are trademarks of Amos Media Company. No use may be made of these marks or of material in this publication, which is reprinted from a copyrighted publication of Amos Media Company., without the express written permission of Amos Media Company, Sidney, Ohio 45365.

HOPEDALE PENNY POST

In 1839, Reverend Adin Ballou published the "Standard of Practical Christianity," forming a new branch of Christianity which focused on pacifism and equality. Ballou and other "Practical Christians" hoped to establish a series of self-sustaining communities where they could live and practice their faith. The Hopedale Community, also known as "Fraternal Communion No. 1," was founded in 1842.

In the beginning, the mail was carried from the nearest government post office in Milford, Massachusetts, by whoever happened to visit there. Sometime around 1849, the community trustees were asked to make arrangements for mail to be delivered to and from the post. It was around 1852 that the Hopedale Post Office was officially founded.

The post operated out of the home of Mrs. Almon Thwing, the first elected Postmistress. Letters were delivered to and from Milford twice a day by a Mr. Pliny Southwick, and delivered within Hopedale by other carriers, including Mrs. Thwing's daughter, Susie. A 1½¢ stamp paid the charge for delivery.

The Hopedale Penny Post used two distinct stamp designs - the first of which has been broken into two types.



PORTRAIT OF
ADIN BALLOU

* **THE HOPEDALE COMMUNITY.** *
* *An Illustration of CHRISTIAN SOCIALISM: Being 1. A True Church,* *
* *based on a declaration of Faith in the Religion of Jesus Christ, and* *
* *of bounden subjection to all its moral obligations; 2. A True State,* *
* *possessing the rights and prerogatives, and exercising the func-* *
* *tions of any body politic whatsoever—subject to the Higher Law* *
* *of the Eternal King; 3. A Universal Reform Association, including* *
* *Temperance, Anti Oath-taking, Anti-Gambling, Chastity, Wo-* *
* *man's Rights, Anti-Slavery, Non-Resistance, and Social Reorgan-* *
* *ization—on Christian Principles; 4. A Missionary Society, for the* *
* *promulgation of New Testament Christianity, the Reformation* *
* *of the nominal Church, and the conversion of the World. Its Or-* *
* *gan is THE PRACTICAL CHRISTIAN, Published fortnightly, at \$1* *
* *per year. Located at HOPEDALE, (MILFORD,) Mass.* *

"THE HOPEDALE COMMUNITY" ADVERTISING ENVELOPE
(PHOTOCOPY ~150%)

* Hopedale *
* Penny Post. *

TYPE I - 84L1
RAYED ASTERISKS
(PHOTOCOPY ~150%)

* Hopedale *
* Penny Post *

TYPE II - 84L2
PLAIN ASTERISKS IN CORNERS
(PHOTOCOPY ~150%)

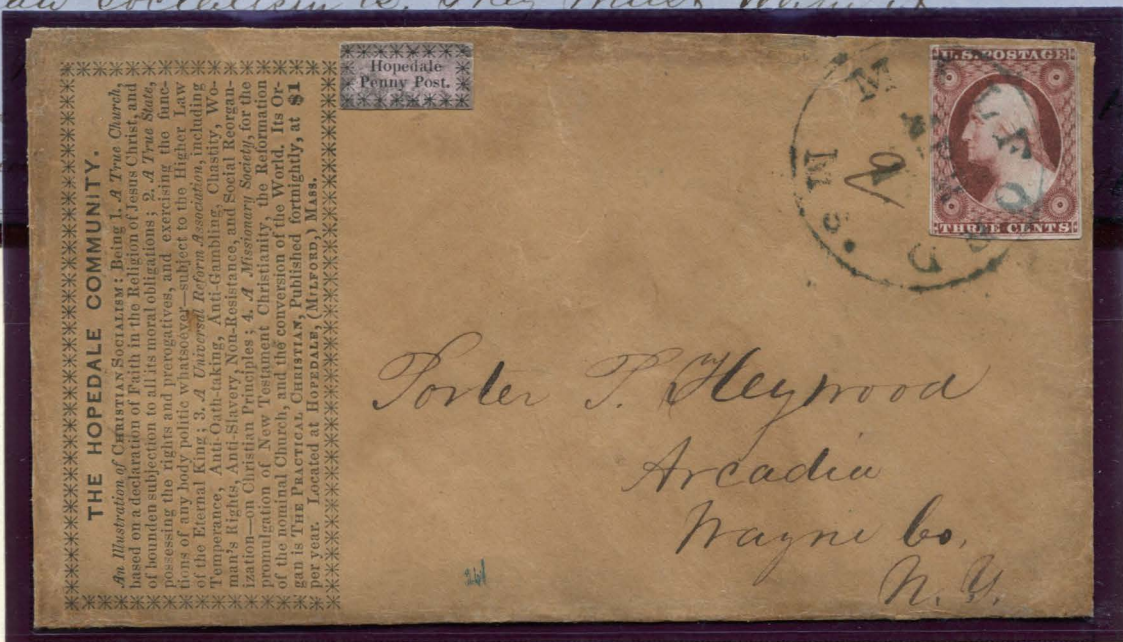
The first stamps were printed on glazed pink paper. These stamps featured a border of asterisks. They were probably typographed by the same printer who produced the advertising envelopes distributed to the community, as they use the same asterisks (including a broken one, used for both the envelope and type I stamp). The second type was printed with different, smaller asterisks in the corners.

HOPEDALE PENNY POST

The cover featured here includes its original contents: a letter discussing the printing of five-hundred advertising envelopes, including this one.

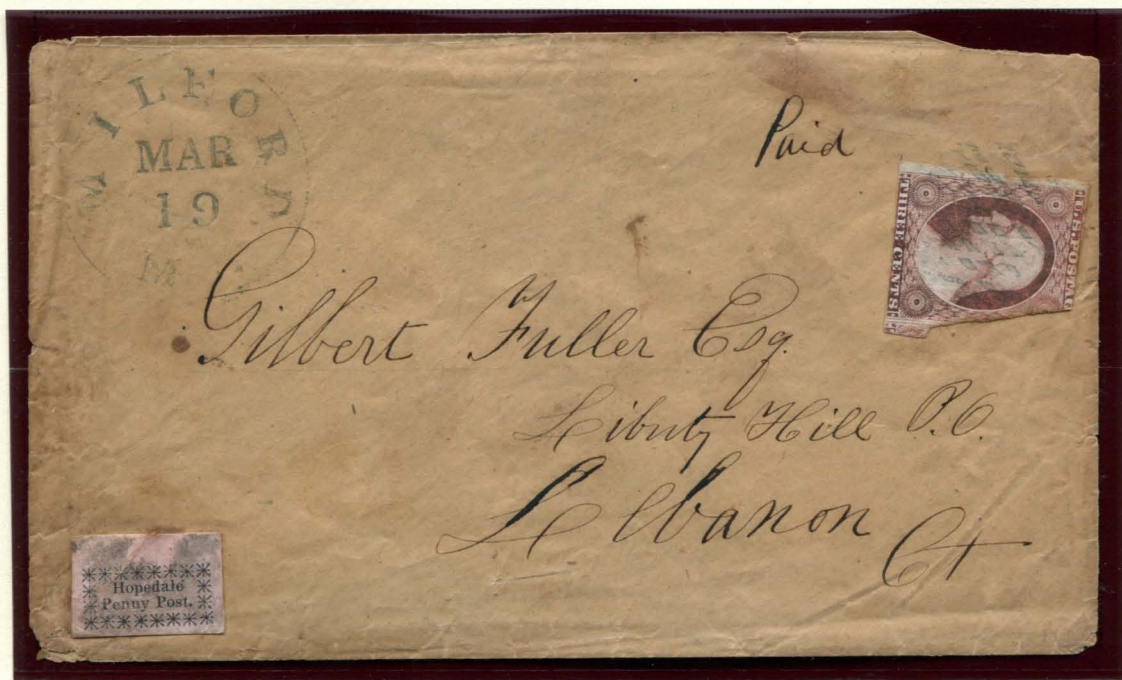
I have got up an advertisement of "The Hopedale Community" for envelopes as you see upon the one enclosing this. Have had 500 printed—They seem to meet with general favor; so much so that nearly all, if not all will use them. I think our friends abroad will also buy of them for use. I am determined that the world shall know that there is such a thing as "The Hopedale Community" in existence. We will employ all possible means to force ourselves upon public notice. Our modesty on this point has evaporated—if we can have any. The time has come for mankind to learn what Christian Socialism is. They must learn it.

But
we soon
members



84L1 : 1¢ BLACK ON PINK GLAZED
GENUINE ON COVER
MAILED WITH
11A : 3¢ DULL RED
TIED BY MILFORD, MASSACHUSETTS CDS
APRIL 1, (1852)

HOPEDALE PENNY POST



84L1 : 1¢ BLACK ON PINK GLAZED
TYPE I - GENUINE ON COVER
MAILED WITH
11A : 3¢ DULL RED TIED BY GRIDDED CIRCLE HANDSTAMP
MILFORD, MASSACHUSETTS CDS MARCH 19
MANUSCRIPT "PAID"



84L2 : 1¢ BLACK ON PINK GLAZED
TYPE II - GENUINE ON COVER
MAILED WITH
11 : 3¢ DULL RED TIED BY CDS
MILFORD, MASSACHUSETTS OCTOBER 14
PSE CERT #54844

HOPEDALE PENNY POST

The second Hopedale Penny Post stamp design was a small four-ring circle. These were most often cut as squares, although the example below is cut to shape. The stamp is affixed to the back of this cover, as was common.



84L3 : 1¢ BLACK ON YELLOW WOVE
GENUINE ON COVER
MAILED WITH
MILFORD, MASSACHUSETTS CDS MAY 11

The front of the cover is missing the 3¢ US stamp it was originally mailed with. This cover was previously of the Hollowbush, Golden and Kuphal collections.

Scott also lists this stamp in pink, unique as a pair.