

THE
MIKE FARRELL
COLLECTION
OF INDEPENDENT MAILS

INCLUDING THE HISTORY, FORGERIES, & FANTASIES OF
UNITED STATES, LOCAL POSTS, CARRIERS,
INDEPENDENT MAIL ROUTES, & EXPRESS CO.S

INDEPENDENT MESSENGER AND
DELIVERY SERVICE CO.

The information and identification within these selections is the individual work of the Farrell Collection. It is always recommended to consult multiple sources for additional information or opinions. Local post company descriptions are based on information available at the time of writing. Descriptions in the Farrell Collection were written based on personal research and sources including, but not limited to: Articles in the Carriers and Locals Society's The Penny Post; Amos Media's Scott Catalogue; Patton's The Private Local Post of the United States; Springer's Handbook of North American Cinderella Stamps; Lyons' Identifier for Carriers, Locals, Fakes Forgeries and Bogus Posts of the United States; articles in the USPCS's The Chronicle; Mosher's Catalog of Private Express Labels and Stamps; The Eastern Independent Mail Company Study Group's Eastern Independent Mail Companies and Express Mail Companies 1840-1845; Elliot Perry's Pat Paragraphs; James N. Drummond's Catalog of Philatelic Miscellany; and the notes of George Sloane and Gordon Stimmell.

Colors listed for stamps and forgeries are the opinions of the Farrell Collection based on viewing physical copies of the pieces under consistent lighting. Colors in the .pdfs may be slightly inaccurate due to manipulations from the scanning process, computer monitor settings, or (in event that the files are printed for offline viewing) the printing process.

Unless otherwise noted, stamps are identified by their Scott Catalogue numbers and forgeries are identified by their Lyons Identifier type. Scott numbers in parenthesis under listed forgeries represent approximately what stamp the forgery is attempting to imitate.

Copyright Amos Media Company - 2021

The Scott Numbers are the copyrighted property of Amos Media Company, and are used here under a licensing agreement with Amos. The marks Scott and Scott's are Registered in the U.S. Patent and Trademark Office, and are trademarks of Amos Media Company. No use may be made of these marks or of material in this publication, which is reprinted from a copyrighted publication of Amos Media Company., without the express written permission of Amos Media Company, Sidney, Ohio 45365.

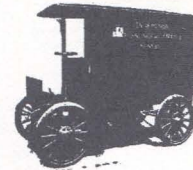
INDEPENDENT MESSENGER AND DELIVERY SERVICE CO.

This Rochester, New York delivery company was managed by David Geddes. Geddes was born in Scotland around 1881 and moved to the US at a young age. Prior to his listing as manager of the Independent Messenger and Delivery Service Co. in 1908, he was listed in directories as an advertising agent.

In 1912, the company advertised under the name "Rochester Delivery Co." This rebranding was short lived, since the company was no longer listed in the 1913 directory, and Geddes was listed instead as a salesman.

ADVERTISEMENT PUBLISHED IN
ROCHESTER DIRECTORY FOR THE
YEAR BEGINNING JULY 1, 1910
PUBLISHED BY DREW ALLIS COMPANY

Independent Messenger & Delivery Service Co.



D. Geddes, Gen'l Mgr.

Pick up and delivery service to all parts of Rochester daily (except Sunday), 8 a. m. 12 noon, 4 p. m. (7 p. m. Saturday).

Delivery to Charlotte, Summerville and White City. Wagons leave at 2 p. m. daily (except Sunday).

Manitou Beach and the Ponds. The Charlotte wagon connects with the Manitou Beach Electric Railway about 6 p. m.

Pittsford and intermediate points via East Avenue and Monroe Avenue, leave 1 p. m. daily (except Sunday).

Electric wagons rented by the hour or day.

Enclosures delivered for out of town concerns.

Home Phone 345
Bell Phone Main 1300

35 STILLSON STREET

PARCEL STAMP

The Independent Messenger and Delivery Service Co. issued parcel stamps to pay for deliveries. These 10¢ stamps were printed in green on white paper and featured an illustration of an electric wagon in the center.



INMD-S2 : 2¢ GREEN ON WHITE - PERF 12
USED ON TAG WITH BLACK CRAYON CANCEL