

THE
MIKE FARRELL
❧ COLLECTION ❧
OF INDEPENDENT MAILS

INCLUDING THE HISTORY, FORGERIES, & FANTASIES OF
UNITED STATES, LOCAL POSTS, CARRIERS,
INDEPENDENT MAIL ROUTES, & EXPRESS CO.S

KIDDER'S CITY EXPRESS POST

The information and identification within these selections is the individual work of the Farrell Collection. It is always recommended to consult multiple sources for additional information or opinions. Local post company descriptions are based on information available at the time of writing. Descriptions in the Farrell Collection were written based on personal research and sources including, but not limited to: Articles in the Carriers and Locals Society's The Penny Post; Amos Media's Scott Catalogue; Patton's The Private Local Post of the United States; Springer's Handbook of North American Cinderella Stamps; Lyons' Identifier for Carriers, Locals, Fakes Forgeries and Bogus Posts of the United States; articles in the USPCS's The Chronicle; Mosher's Catalog of Private Express Labels and Stamps; The Eastern Independent Mail Company Study Group's Eastern Independent Mail Companies and Express Mail Companies 1840-1845; Elliot Perry's Pat Paragraphs; James N. Drummond's Catalog of Philatelic Miscellany; and the notes of George Sloane and Gordon Stimmell.

Colors listed for stamps and forgeries are the opinions of the Farrell Collection based on viewing physical copies of the pieces under consistent lighting. Colors in the .pdfs may be slightly inaccurate due to manipulations from the scanning process, computer monitor settings, or (in event that the files are printed for offline viewing) the printing process.

Unless otherwise noted, stamps are identified by their Scott Catalogue numbers and forgeries are identified by their Lyons Identifier type. Scott numbers in parenthesis under listed forgeries represent approximately what stamp the forgery is attempting to imitate.

Copyright Amos Media Company - 2019

The Scott Numbers are the copyrighted property of Amos Media Company, and are used here under a licensing agreement with Amos. The marks Scott and Scott's are Registered in the U.S. Patent and Trademark Office, and are trademarks of Amos Media Company. No use may be made of these marks or of material in this publication, which is reprinted from a copyrighted publication of Amos Media Company., without the express written permission of Amos Media Company, Sidney, Ohio 45365.

KIDDER'S CITY EXPRESS POST

This Brooklyn local was formed when Wellington Walton, former agent for Boyd's and proprietor of Walton & Co.'s City Express, sold his post to Henry Kidder in the fall of 1847. Kidder ran his new post for four years before with his partners: brothers Issac and George Snedeker



142L1 : 2¢ BLACK
ON PINK GLAZED SC
PRECURSOR TO KIDDER'S

Kidder sold the post to Issac C. Snedeker in 1851. The Snedekers continued operation of the post under the Kidder's City Express name. Although the post was successful, Issac removed himself from the postal business. He sold the post sometime around 1853. It was briefly managed by Henry Mellish before being taken over by Benjamin Rogers. Under Rogers's management, it would become the Brooklyn City Express Post.



2¢ BLACK "KIDDER'S CITY EXPRESS"
GENUINE HANDSTAMP
"FREE" HANDSTAMP

The cover above was mailed with a Kidder's City Express 2¢ handstamp. It was mailed locally within Brooklyn.

The American Stampless Cover Catalog lists three different Kidder's City Express oval handstamp. The first two were longer and included either the date and time, or the date and "2 cts" in the center. The handstamp featured on the cover is the third type: a shorter oval with no date and "2 cts" in the center.

Kidder's handstamps are very similar to the handstamps of other Brooklyn locals such as Walton's and Boyd's.

KIDDER'S CITY EXPRESS POST

Kidder issued a stamp for prepayment of service. The stamps were shaped as elongated octagons with a horse and rider vignette. The Kidder's City Express Post stamps were printed ink black on glazed surface paper in shades of blue. Snedecker continued to use the stamps when he took over the post. Around

this time, the manuscript control mark "I S" (Issac Snedecker) was added to the stamps. This mark is known in two different styles.

The block of four at left is the only recorded multiple of a genuine Kidder's stamp.



93L1 : 2¢ BLACK ON BLUE SC
GENUINE BLOCK OF FOUR
PF CERT #0365849



93L1 : 2¢ BLACK ON BLUE SC
GENUINE ON COVER
MAILED WITH RED "10" HANDSTAMP
BROOKLYN, NEW YORK MARCH 25 (1857)

The cover above was mailed to Franklin B. Hough. The Kidder's City Express Post stamp is cancelled with a manuscript "IS" (Isaac Snedecker). It was mailed with a "10" rate handstamp.

This is a turned cover. The inner cover is addressed to Walter D. Yale in Houseville, New York. The outer cover, on which the stamp is affixed, is addressed to Franklin B. Hough in Somerville, New York.

KIDDER'S CITY EXPRESS POST



93L1 : 2¢ BLACK ON BLUE SC
GENUINE ON COVER - MANUSCRIPT "IS"
MAILED WITH RED "PAID 10" HANDSTAMP
BROOKLYN, NEW YORK OCTOBER 11 (1857)



The cover above is another turned cover from the same correspondence as the previous: addressed to Franklin B. Hough in Somerville, New York on the outside; and addressed to Walter D. Yale in Houseville, New York on the inside.

REDUCED PHOTOCOPY
OF INSIDE COVER

Franklin B. Hough was a doctor, scientist and historian. In the 1850s he wrote books on the histories of Franklin, St. Lawrence, and Lewis counties.

In the late 1870s, Hough helped found the Division of Forestry within the US Department of Agriculture. In 1881 he became the first chief of the Division.



PORTRAIT OF FRANKLIN B. HOUGH
CIRCA 1880

KIDDER'S CITY EXPRESS POST

Sometime between 1860 and 1865, Hussey created reprints of the Kidder's stamps in small sheets of ten. Hussey's engraver, Thomas Wood, reported that he had printed 2,000 stamps by 1866. These reprints can be identified by their position within the sheet.

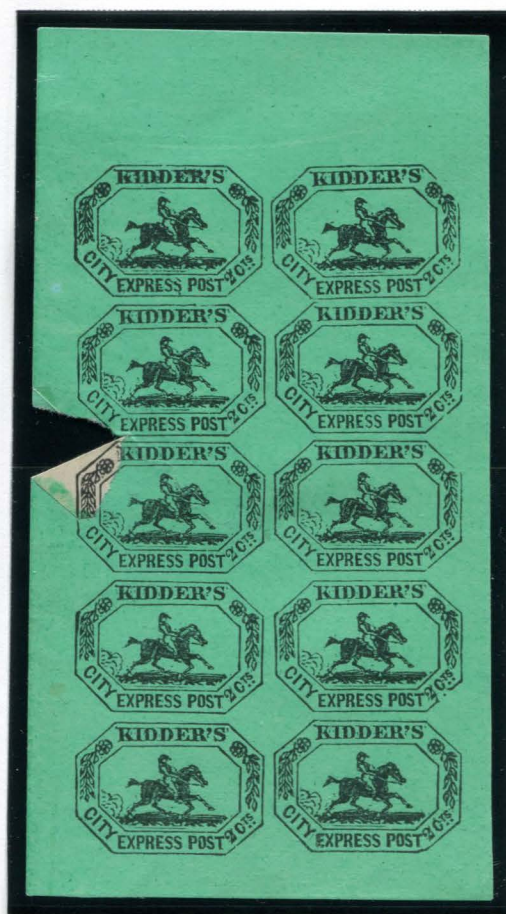
REPRINT - HUSSEY
2¢ BLACK ON GREEN SC
POSITION 10



Below are two sheets of reprint stamps. The sheet at right includes a small paper fold misprint. A tear and fold in the paper resulted in part of position five being printed on the back of the sheet (and part of the front stamp missing a portion).



REPRINT
HUSSEY
SHEET OF TEN
2¢ BLACK
ON GREEN SC
(93L1)



REPRINT
HUSSEY
SHEET OF TEN
2¢ BLACK
ON GREEN SC
(93L1)
WITH PAPER FOLD MISPRINT

KIDDER'S CITY EXPRESS POST

S. Allan Taylor printed two forgeries of the Kidder's City Express Post stamp. The forgery known as "Forgery C" is believed to be his first attempt, while "Forgery A" was his second version.



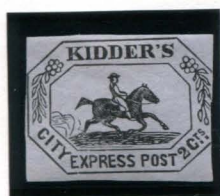
FORGERY A
TAYLOR - FORM AB1
2c BLACK
ON YELLOW



FORGERY A
TAYLOR - FORM AB1
2c BLACK
ON GOLD YELLOW



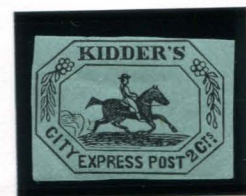
FORGERY A
TAYLOR - FORM AB1
2c BLACK
ON PINK



FORGERY A
TAYLOR - FORM AB1
2c BLACK
ON GRAY



FORGERY A
TAYLOR - FORM AB1
2c BLACK
ON BLUE



FORGERY A
TAYLOR - FORM AB1
2c BLACK
ON GREEN



FORGERY A
TAYLOR - FORM AB5
2c RED VIOLET
ON LAVENDER SC



FORGERY A
TAYLOR - FORM AB5
2c RED VIOLET
ON GREENISH BLUE SC



FORGERY A
TAYLOR - FORM AB17
2c BLACK
ON ORANGE SC



FORGERY A
TAYLOR - FORM AB17
2c BLACK
ON LILAC SC



FORGERY A
TAYLOR - FORM AB17
2c RED VIOLET
ON TAN

KIDDER'S CITY EXPRESS POST

The forgery at right was printed by Taylor and later cut to shape by a collector. This stamp is overprinted with "Specimen" in a decorative font. It was probably overprinted by a collector at some point to indicate that it is not a genuine stamp.



FORGERY A
TAYLOR - FORM AB17
2¢ BLACK
ON ORANGE SC
"SPECIMEN"



FORGERY A
TAYLOR - FORM AB18
2¢ BLACK
ON WHITE



FORGERY A
TAYLOR - FORM AB18
2¢ BLACK
ON OFF-WHITE



FORGERY A
TAYLOR - FORM AB18
2¢ BLACK
ON LIGHT BLUE



FORGERY A
TAYLOR - FORM AB18
2¢ BLACK
ON GREEN SC



FORGERY A
TAYLOR - FORM BB4
2¢ RED
ON GRAY BLUE V. LAID



FORGERY A
TAYLOR - FORM BB4
2¢ RED
ON BLuish GREEN



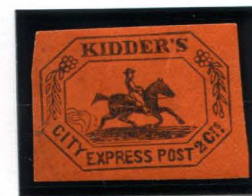
FORGERY A
TAYLOR
2¢ BLACK
ON WHITE



FORGERY A
TAYLOR
2¢ BLACK
ON PALE GREEN



FORGERY A
TAYLOR
2¢ BLACK
ON RED



FORGERY A
TAYLOR
2¢ BLACK
ON VERMILION SC

KIDDER'S CITY EXPRESS POST

S. Allan Taylor printed two forgeries of the Kidder's City Express Post stamp. The forgery known as "Forgery C" is believed to be his first attempt, while "Forgery A" was his second version.



FORGERY C
TAYLOR - FORM 2
2c BLACK
ON CREAM



FORGERY C
TAYLOR - FORM 2
2c BLACK
ON PALE PINK



FORGERY C
TAYLOR - FORM 2
2c BLACK
ON YELLOW



FORGERY C
TAYLOR - FORM 2
2c BLACK
ON ORANGE BUFF



FORGERY C
TAYLOR - FORM 2
2c BLACK
ON PURPLE



FORGERY C
TAYLOR - FORM 2
2c BLACK
ON LIGHT VIOLET



FORGERY C
TAYLOR - FORM 2
2c BLACK
ON VIOLET GRAY



FORGERY C
TAYLOR - FORM 2
2c BLACK
ON BLUE



FORGERY C
TAYLOR - FORM 2
2c BLACK
ON GREEN



FORGERY C
TAYLOR - FORM 16
2c BLACK
ON WHITE



FORGERY C
TAYLOR - FORM 16
2c BLACK
ON LT. BLUE VIOLET SC



FORGERY C
TAYLOR - FORM 16
2c BLACK
ON GREEN SC



FORGERY C
TAYLOR - FORM 16
2c BLACK
ON ORANGE SC

KIDDER'S CITY EXPRESS POST



FORGERY C
TAYLOR - FORM AA7
2¢ BLACK
ON TEAL SC



FORGERY C
TAYLOR - FORM AA7
2¢ BLACK
ON YELLOW SC



FORGERY C
TAYLOR - FORM AA10
2¢ BROWN
ON YELLOW



FORGERY C
TAYLOR - FORM AA10
2¢ BROWN
ON WHITE



FORGERY C
TAYLOR - FORM S11
2¢ BLACK
ON YELLOW V. LAID



FORGERY C
TAYLOR - FORM S11
2¢ BLACK
ON GRAYISH



FORGERY C
TAYLOR - FORM S11
2¢ BLACK
ON CREAM



FORGERY C
TAYLOR
2¢ BLACK
ON PURPLE



FORGERY C
TAYLOR
2¢ GREEN
ON WHITE



FORGERY C
TAYLOR
2¢ GREEN
ON CREAM

A variation on "Forgery C", Taylor's "Forgery C1" features a closed "C" in "2cts". This makes it appear as "2ots".



FORGERY C1
TAYLOR - FORM AA24
2¢ BLACK
ON GOLD YELLOW SC



FORGERY C1
TAYLOR - FORM AA24
2¢ BLACK
ON GREEN SC



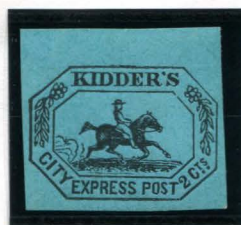
FORGERY C1
TAYLOR
2¢ BLUE
ON WHITE

KIDDER'S CITY EXPRESS POST

Scott's counterfeits of Kidder's City Express are known as "Forgery B".



FORGERY B
SCOTT
ILLUSTRATION CUT FROM
ALBUM PAGE
2c BLACK
ON CREAM



FORGERY B
SCOTT
2c BLACK
ON TEAL SC



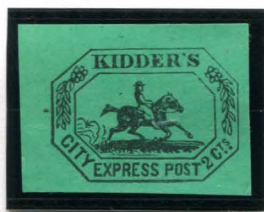
FORGERY B
SCOTT
2c BLACK
ON GREEN (SHADE) SC
CUT TO SHAPE



FORGERY B
SCOTT
2c BLACK
ON GREEN (SHADE) SC



FORGERY B
SCOTT
2c BLACK
ON GREEN (SHADE) SC
FAKE CANCELLATION

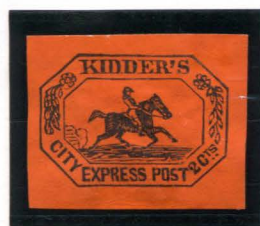


FORGERY B
SCOTT
2c BLACK
ON GREEN (SHADE) SC



FORGERY B
SCOTT
2c BLACK
ON GREEN (SHADE) SC

Several forgeries produced by unknown counterfeiters.



FORGERY D
2c BLACK
ON ORANGE SC



FORGERY D
2c BLACK
ON GREEN SC



FORGERY E1
2c BLACK
ON GREENISH CREAM



FORGERY F
2c BLACK
ON ORANGE SC