

LOS ANGELES LOCAL EXPRESSES

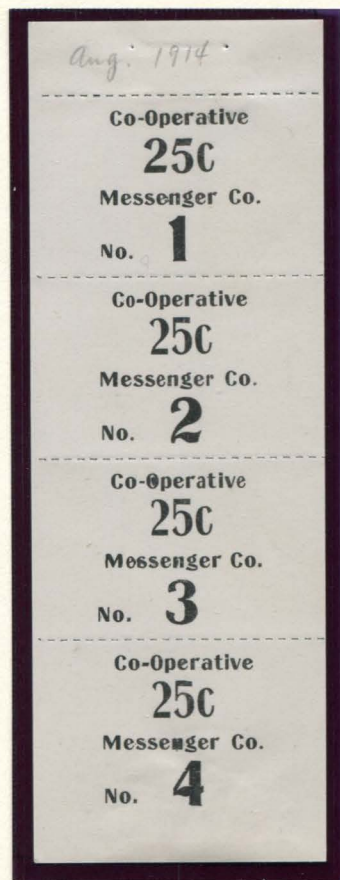
CO-OPERATIVE MESSENGER CO.

This local express company, owned by J.H. Noyes, operated in 1914. There is little information about the company available. It is possible that this company was formed in 1910 as a way for messenger boys from Western Union and American District Telegraph companies to earn money while on strike from the aforementioned companies.

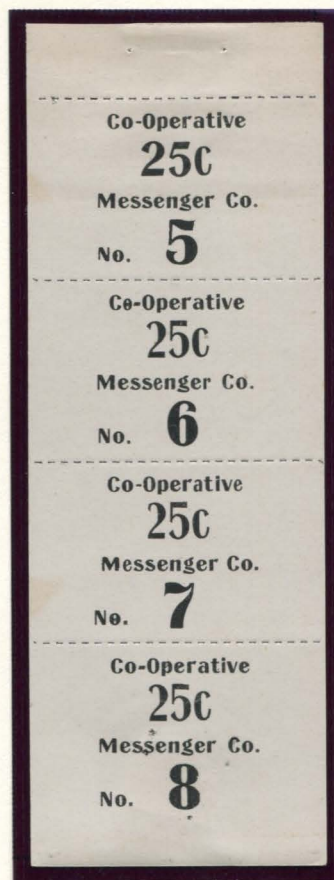
The company issued stamps (or "tickets") for 25¢ in booklets. These booklets included five sheets of four stamps, and the back cover could also be used as a stamp if affixed to the package.



CO-OPERATIVE
25¢ BLACK ON WHITE
NO. 14

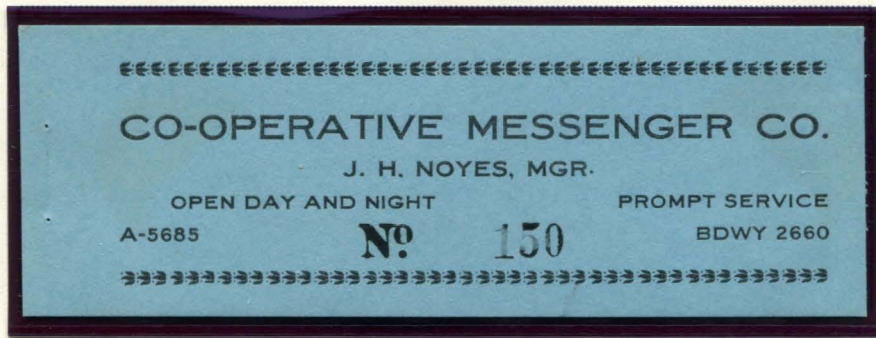


CO-OPERATIVE
25¢ BLACK ON WHITE
STRIP OF FOUR
NO. 1 - 4

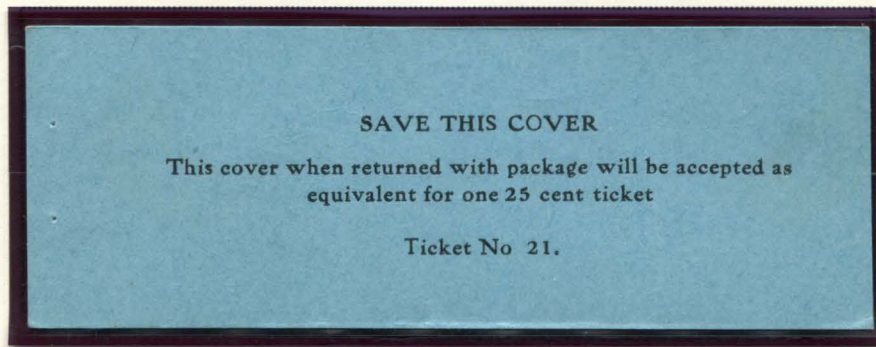


CO-OPERATIVE
25¢ BLACK ON WHITE
STRIP OF FOUR
NO. 5 - 8

LOS ANGELES LOCAL EXPRESSES
CO-OPERATIVE MESSENGER CO.



CO-OPERATIVE
BOOKLET FRONT - CONTROL # 150



CO-OPERATIVE
BOOKLET BACK COVER / TICKET NO. 21
25¢ BLACK ON BLUE



CO-OPERATIVE MESSENGER CO.
BUSINESS CARD
"CHARLIE NO. 2"