

LOS ANGELES LOCAL EXPRESSES

PIONEER CITY & SUBURBAN DELIVERY CO.

The Pioneer City and Suburban Delivery Company was one of the largest and most successful Los Angeles local expresses. It ran lines from Los Angeles to the surrounding suburbs.

The company originally used horse-drawn carriages. Delivery trucks were introduced to the service around 1909. C.H. Fuller, proprietor of Pioneer City and Suburban Delivery, also owned the Pioneer Trucking Company, which ran deliveries on longer routes at \$1.50 an hour. Automobiles were shared between the two services.

HORSES DASH THROUGH THE CROWDED STREETS

Teams Become Frightened and Run
Away—Many Persons in Their
Path Narrowly Escape
Injury

J. H. Fisher, a driver for the Pioneer City and Suburban Delivery company, was thrown from his wagon yesterday morning and painfully bruised when the horse which he was driving became frightened at First and Olive streets and ran down First street toward Broadway. A number of persons narrowly escaped injury when the animal turned on Broadway, where it slipped and fell and was caught before any damage was done.

About the same time two horses attached to a heavy brewery wagon took fright at the whistle of an engine at the Arcade station and dashed madly down the court from the baggage room to the express office at the south end, where they were brought to a sudden stop by a fence. There were a number of persons and teams in the path of the maddened animals, but they cleared all obstructions, no one was injured and none of the wagons was struck. One of the horses was badly bruised when it struck the fence.

NEWSPAPER ARTICLE
LOS ANGELES DAILY HERALD
AUGUST 7, 1908



PIONEER & SUBURBAN
"OUR OWN DELIVERY" TYPE
10¢ RED ON YELLOW
CONTROL # 23927



PIONEER & SUBURBAN
"OUR OWN DELIVERY" TYPE
25¢ BLACK ON BLUE
CONTROL # 7844



PIONEER & SUBURBAN
"OUR OWN DELIVERY" TYPE
25¢ BLACK ON BLUE
CONTROL # 7226
PURPLE HANDSTAMP CANCEL

LOS ANGELES LOCAL EXPRESSES

PIONEER CITY & SUBURBAN DELIVERY CO.

<p>DAILY DELIVERIES TO THE FOLLOWING SUBURBAN TOWNS</p> <hr/> <p>PASADENA SO. PASADENA HOLLYWOOD EDENDALE COLEGROVE ALHAMBRA DOLGEVILLE THE PALMS LONG BEACH SEA SIDE PARK VENICE OCEAN PARK SANTA MONICA HUNTINGTON P'K GLENDALE EAGLE ROCK TROPICO</p>	<p>C. H. FULLER, PROP.</p> <p>PIONEER CITY AND SUBURBAN DELIVERY CO. MARKET AND SAN PEDRO STS</p> <p>PHONES } A 5414 } MAIN 2963</p> <p>LOS ANGELES, CAL.</p> <p>WE DELIVER FROM THE MOUNTAINS TO THE SEA ANYTHING FROM A LETTER TO A HUNDRED POUND PACKAGE</p> <p>(OVER)</p>	<p>C. R. RAMSEY, MGR.</p>
--	---	---------------------------

PIONEER CITY & SUBURBAN DELIVERY CO.
ADVERTISING CARD WITH DELIVERY SCHEDULE

AT RIGHT: PHOTOCOPY OF
TEXT FROM CARD REVERSE
REDUCED TO 75%

This advertising card for the Pioneer City & Suburban Delivery lists seventeen different suburbs for daily delivery. By 1915, advertisements listed daily deliveries to thirty different suburban areas.



PIONEER CITY & SUBURBAN DELIVERY
MOTOR TRUCK CIRCA 1909

Pioneer City and Suburban Delivery HOURS FOR DELIVERY

1ST DELIVERY LEAVES STATION AT 6 A. M.
FOR ALL SUBURBAN TOWNS

2ND DELIVERY LEAVES STATION AT 7:30 A. M.
FOR ALL PARTS OF CITY

3RD DELIVERY LEAVES STATION AT 1:15 P. M.
FOR BUSINESS DISTRICT SOUTH TO 8TH ST.

4TH DELIVERY LEAVES STATION AT 3:30 P. M.
FOR ALL PARTS OF CITY WITHIN OLD CITY
LIMITS ONLY (SEE OUR MAP FOR BOUNDARIES.)

HOURS FOR PICK-UP

1ST PICK-UP LEAVES STATION AT 8:30 A. M.
2ND " " " " 12:00 NOON
3RD " " " " 2:00 P. M.
4TH " " " " 4:30 P. M.

OVER

Wm. Howell

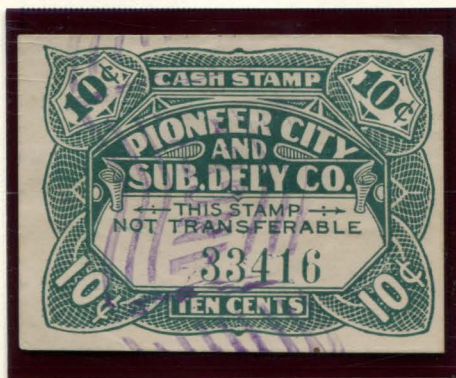
LOS ANGELES LOCAL EXPRESSES

PIONEER CITY & SUBURBAN DELIVERY CO.

Pioneer City & Suburban Delivery Co. used stamps in two different styles. The first style read "Our Own Delivery" and was assumedly used for inter-company deliveries. The second style was more decorative with banknote-style lathwork design around the border. These are the more common style, most likely for standard delivery payment.

Of this second style there were three types, determined by the different printer listed on each one. Each type was printed in a few different colors or on different papers to represent different values. Control numbers were printed on each stamp, sometimes including letters; and color shades changed throughout multiple printings. This results in many varieties of these stamps.

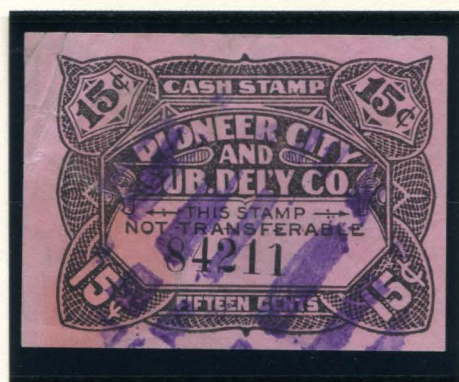
Below are examples of the Pioneer City & Suburban "Type 1" stamps. They do not include a printer's imprint under the design. This is the only type to include a denomination value in the corners.



PIONEER CITY & SUBURBAN
TYPE 1 (NO PRINTER)
10¢ GREEN ON WHITE
CONTROL # 33416
PURPLE HANDSTAMP CANCEL



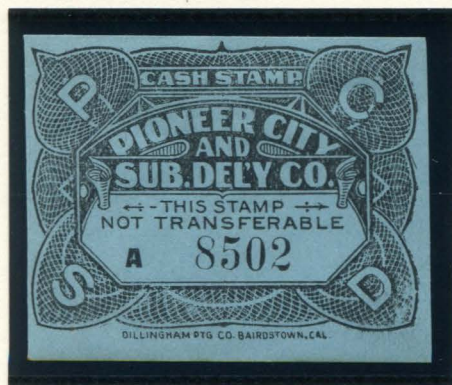
PIONEER CITY & SUBURBAN
TYPE 1 (NO PRINTER)
15¢ BLACK ON PINK
CONTROL # 60640
PURPLE HANDSTAMP CANCEL



PIONEER CITY & SUBURBAN
TYPE 1 (NO PRINTER)
15¢ BLACK ON PINK
CONTROL # 84211
PURPLE HANDSTAMP CANCEL

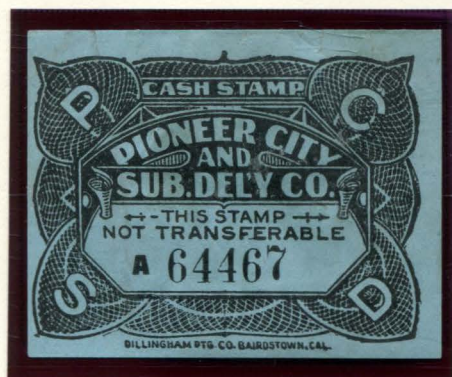
LOS ANGELES LOCAL EXPRESSES

PIONEER CITY & SUBURBAN DELIVERY CO.

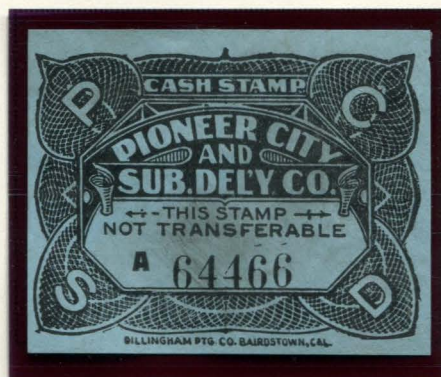


PIONEER CITY & SUBURBAN
TYPE 2 (DILLINGHAM)
10¢ BLACK ON BLUE
CONTROL # A 8502

Featured on this page are examples of "Type 2" Pioneer City & Suburban Delivery Co. stamps, which were printed by the Dillingham Printing Company. This stamp type was probably used around 1909.



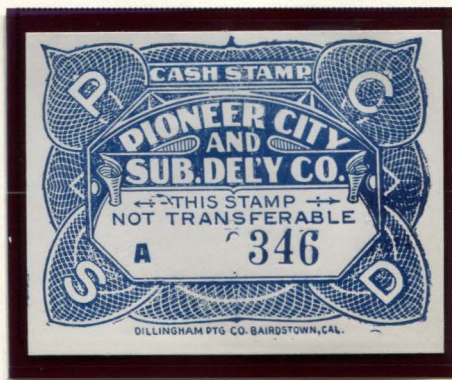
PIONEER CITY & SUBURBAN
TYPE 2 (DILLINGHAM)
10¢ INTENSE BLACK ON BLUE
CONTROL # A 64467



PIONEER CITY & SUBURBAN
TYPE 2 (DILLINGHAM)
10¢ INTENSE BLACK ON BLUE
CONTROL # A 64466 - SMUDGE CANCEL



PIONEER CITY & SUBURBAN
TYPE 2 (DILLINGHAM)
25¢ DARK BLUE ON WHITE
CONTROL # A 343



PIONEER CITY & SUBURBAN
TYPE 2 (DILLINGHAM)
25¢ DARK BLUE ON WHITE
CONTROL # A 346

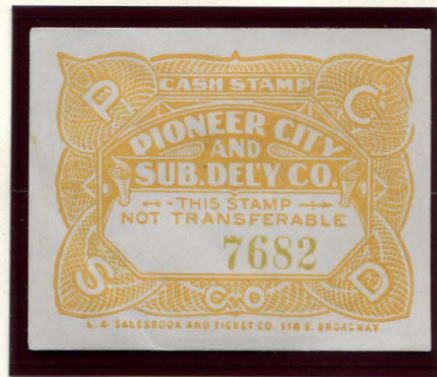
LOS ANGELES LOCAL EXPRESSES

PIONEER CITY & SUBURBAN DELIVERY CO.

The third type of stamps were printed by the L.A. Salesbook and Ticket Co. These used the same non-denominated design as the previous Dillingham printed stamps.

The 8¢ stamps were printed in a variety of shades from yellow to orange on white paper. The 10¢ stamps were printed in shades on green on white. The 15¢ stamps were printed in black on pink. Later printings added letters to the control numbers.

PIONEER CITY & SUBURBAN
TYPE 3 (LA SALESBOOK)
8¢ YELLOW (SHADE) ON WHITE
CONTROL # 7682



PIONEER CITY & SUBURBAN
TYPE 3 (LA SALESBOOK)
8¢ YELLOW (SHADE) ON WHITE
CONTROL # 7684



PIONEER CITY & SUBURBAN
TYPE 3 (LA SALESBOOK)
8¢ YELLOW (SHADE) ON WHITE
CONTROL # 12794



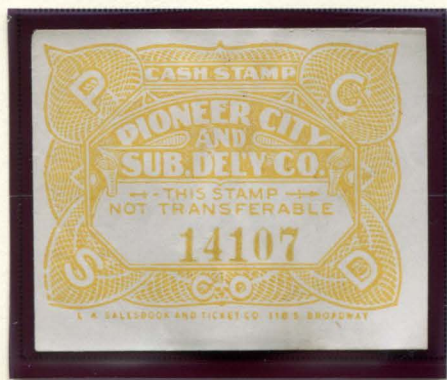
PIONEER CITY & SUBURBAN
TYPE 3 (LA SALESBOOK)
8¢ YELLOW (SHADE) ON WHITE
CONTROL # 13361



PIONEER CITY & SUBURBAN
TYPE 3 (LA SALESBOOK)
8¢ YELLOW (SHADE) ON WHITE
CONTROL # 13574

LOS ANGELES LOCAL EXPRESSES

PIONEER CITY & SUBURBAN DELIVERY CO.



PIONEER CITY & SUBURBAN
TYPE 3 (LA SALESBOOK)
8¢ YELLOW (SHADE) ON WHITE
CONTROL # 14107



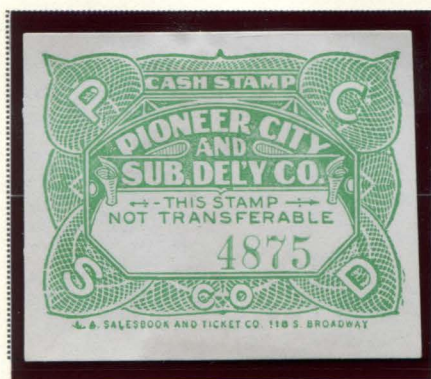
PIONEER CITY & SUBURBAN
TYPE 3 (LA SALESBOOK)
8¢ ORANGE (SHADE) ON WHITE
CONTROL # 64597
PURPLE HANDSTAMP CANCEL



PIONEER CITY & SUBURBAN
TYPE 3 (LA SALESBOOK)
8¢ YELLOW (SHADE) ON WHITE
CONTROL # 7683



PIONEER CITY & SUBURBAN
TYPE 3 (LA SALESBOOK)
8¢ ORANGE (SHADE) ON WHITE
CONTROL # 94547
PURPLE HANDSTAMP CANCEL



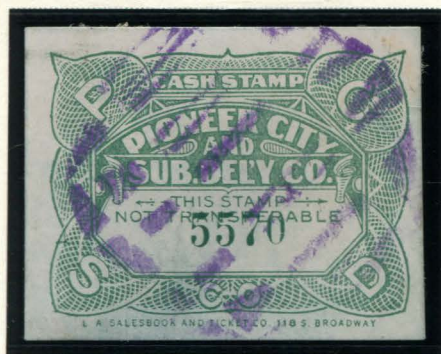
PIONEER CITY & SUBURBAN
TYPE 3 (LA SALESBOOK)
10¢ GREEN (SHADE) ON WHITE
CONTROL # 4875



PIONEER CITY & SUBURBAN
TYPE 3 (LA SALESBOOK)
10¢ GREEN (SHADE) ON WHITE
CONTROL # 52875
PURPLE HANDSTAMP CANCEL

LOS ANGELES LOCAL EXPRESSES

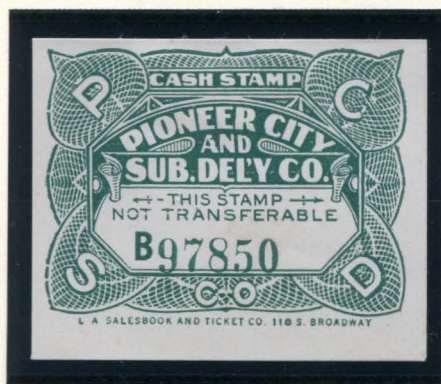
PIONEER CITY & SUBURBAN DELIVERY CO.



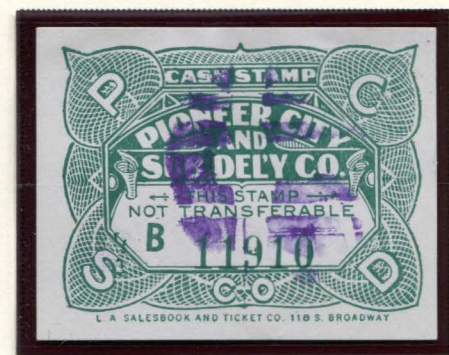
PIONEER CITY & SUBURBAN
TYPE 3 (LA SALESBOK)
10¢ GREEN (SHADE) ON WHITE
CONTROL # 5570
PURPLE HANDSTAMP CANCEL



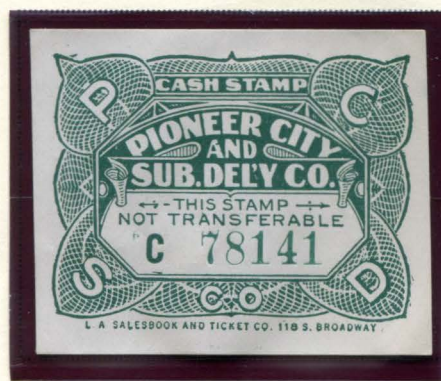
PIONEER CITY & SUBURBAN
TYPE 3 (LA SALESBOK)
10¢ GREEN (SHADE) ON WHITE
CONTROL # B 34758
PURPLE HANDSTAMP CANCEL



PIONEER CITY & SUBURBAN
TYPE 3 (LA SALESBOK)
10¢ GREEN (SHADE) ON WHITE
CONTROL # B 97850



PIONEER CITY & SUBURBAN
TYPE 3 (LA SALESBOK)
10¢ GREEN (SHADE) ON WHITE
CONTROL # B 11910
PURPLE HANDSTAMP CANCEL



PIONEER CITY & SUBURBAN
TYPE 3 (LA SALESBOK)
10¢ GREEN (SHADE) ON WHITE
CONTROL # C 78141



PIONEER CITY & SUBURBAN
TYPE 3 (LA SALESBOK)
10¢ GREEN (SHADE) ON WHITE
CONTROL # C 46295
PURPLE HANDSTAMP CANCEL

LOS ANGELES LOCAL EXPRESSES

PIONEER CITY & SUBURBAN DELIVERY CO.



PIONEER CITY & SUBURBAN
TYPE 3 (LA SALESBOOK)
10¢ GREEN (SHADE) ON WHITE
CONTROL # C 89254



PIONEER CITY & SUBURBAN
TYPE 3 (LA SALESBOOK)
10¢ GREEN (SHADE) ON WHITE
CONTROL # C 96979
BLUE CRAYON LINE CANCEL



PIONEER CITY & SUBURBAN
TYPE 3 (LA SALESBOOK)
10¢ GREEN (SHADE) ON WHITE
CONTROL # C 87616



PIONEER CITY & SUBURBAN
TYPE 3 (LA SALESBOOK)
10¢ GREEN (SHADE) ON WHITE
CONTROL # C 66118
PURPLE HANDSTAMP CANCEL



PIONEER CITY & SUBURBAN
TYPE 3 (LA SALESBOOK)
15¢ BLACK ON PINK
CONTROL # 2310



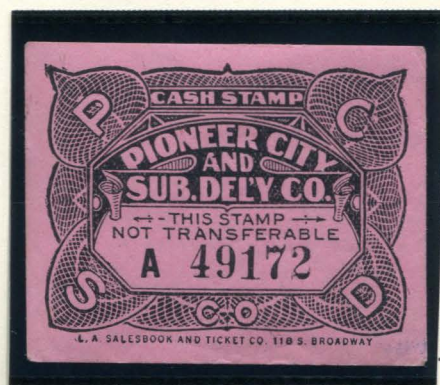
PIONEER CITY & SUBURBAN
TYPE 3 (LA SALESBOOK)
15¢ BLACK ON PINK
CONTROL # 72046
PURPLE CANCEL (MARCH 15, 1916)

LOS ANGELES LOCAL EXPRESSES

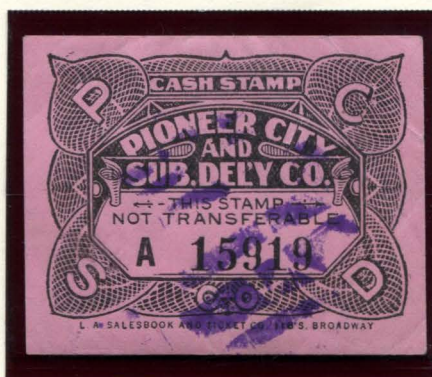
PIONEER CITY & SUBURBAN DELIVERY CO.



PIONEER CITY & SUBURBAN
TYPE 3 (LA SALESBOOK)
15¢ BLACK ON PINK
CONTROL # A 100611



PIONEER CITY & SUBURBAN
TYPE 3 (LA SALESBOOK)
15¢ BLACK ON PINK
CONTROL # A 49172



PIONEER CITY & SUBURBAN
TYPE 3 (LA SALESBOOK)
15¢ BLACK ON PINK
CONTROL # A 15919
PURPLE HANDSTAMP CANCEL

In 1916, the Pioneer City & Suburban Delivery Company became the Los Angeles Special Delivery Company.