

# LOS ANGELES LOCAL EXPRESSES

## RAPID PACKAGE DELIVERY

The Rapid Package Delivery Company was owned by M.J. Howard. It operated in Los Angeles in the 1910s.

The company issued 10¢ stamps ("coupons") in \$3 booklets, which contained ten panes of three stamps each.

The first stamps issued by the company were printed in red and black ink on greenish-blue paper.

WEBER & MURPHY, 310-312 W. 1st, Fifth.

### PARCEL DELIVERY.

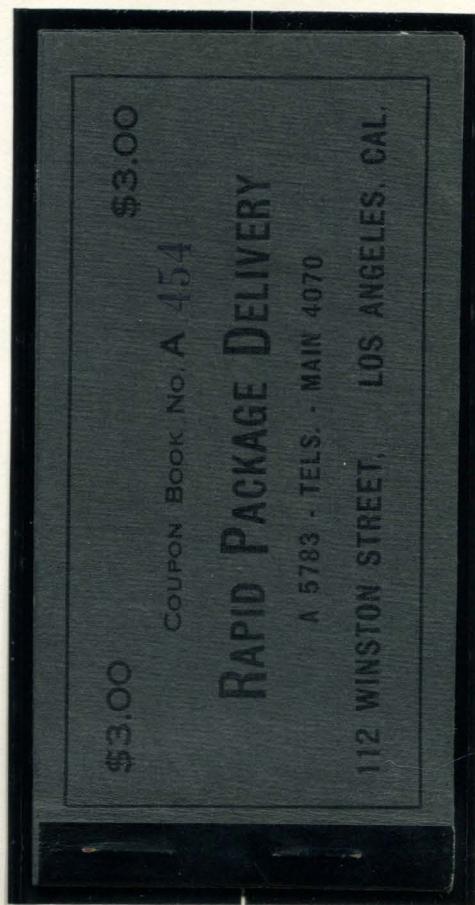
NEW RELIABLE MESSENGER BOYS, 210 Winston,  
Bdwy. 3880, A3556.

RAPID PACKAGE DELIVERY, M. J. Howard, Prop., 112  
Winston, Main 4070, A5783.

DIRECTORY LISTING  
BUSINESS AND PROFESSIONAL DIRECTORY  
OF LOS ANGELES, 1914



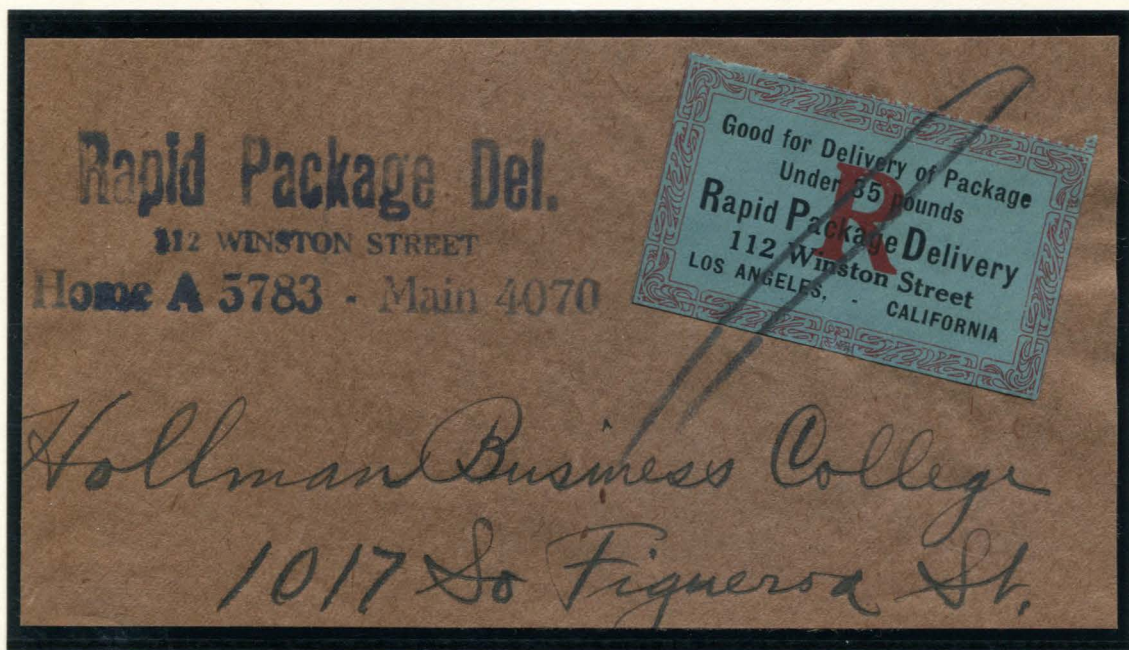
RAPID PACK. DELIVERY  
TYPE 1 (CIRCA 1912)  
10¢ RED & BLACK ON BLUE



RAPID PACK. DELIVERY  
BOOKLET TYPE 1  
\$3 BLACK ON GRAY  
CONTROL # A 454



LOS ANGELES LOCAL EXPRESSES  
RAPID PACKAGE DELIVERY



RAPID PACK. DELIVERY  
TYPE 1 (CIRCA 1912)  
10¢ RED & BLACK ON BLUE  
USED ON PIECE  
PENCIL MARK CANCEL  
"RAPID PACKAGE DEL." THREE LINE HANDSTAMP

The example above was used as payment for a delivery to Hollman Business College in Los Angeles.



D.L. HOLLMAN  
PRESIDENT OF HOLLMAN BUSINESS COLLEGE



# LOS ANGELES LOCAL EXPRESSES

## RAPID PACKAGE DELIVERY

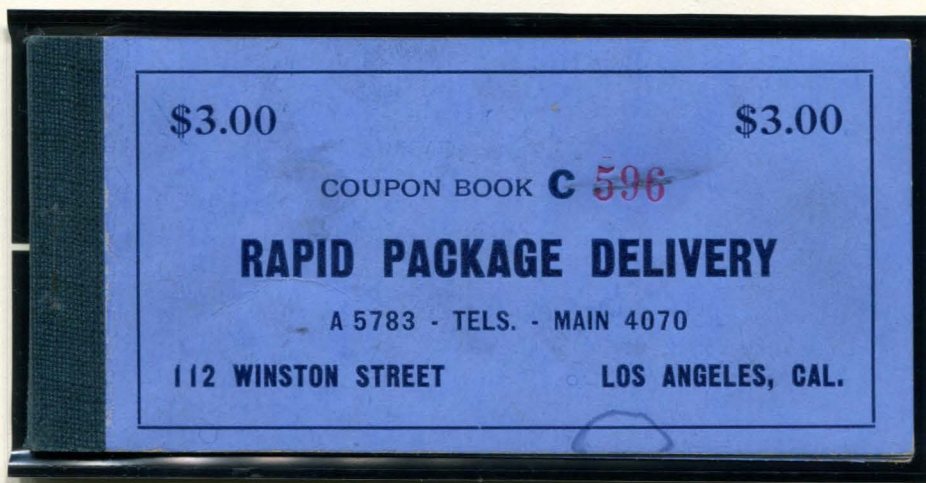
The second and third issues of stamps were printed with the same design on slightly different paper. The stamps were printed by the Dillingham Printing Company, who also printed stamps for several other Los Angeles local delivery stores. These stamps are known with and without commas after "Los Angeles".



RAPID PACK. DELIVERY  
TYPE 2 (CIRCA 1912)  
10¢ BLUE ON BLUE-GREEN  
COMMA AFTER "LOS ANGELES"



RAPID PACK. DELIVERY  
TYPE 2 (CIRCA 1912)  
10¢ BLUE ON BLUE-GREEN  
NO COMMA AFTER "LOS ANGELES"



RAPID PACK. DELIVERY  
TYPE 2 (CIRCA 1912)  
10¢ BLUE ON BLUE-GREEN  
ONE SINGLE / ONE PANE OF THREE  
COMMA AFTER "LOS ANGELES"  
TYPE 2 BOOKLET COVER  
BLUE AND RED ON BLUE  
CONTROL # C 596



# LOS ANGELES LOCAL EXPRESSES

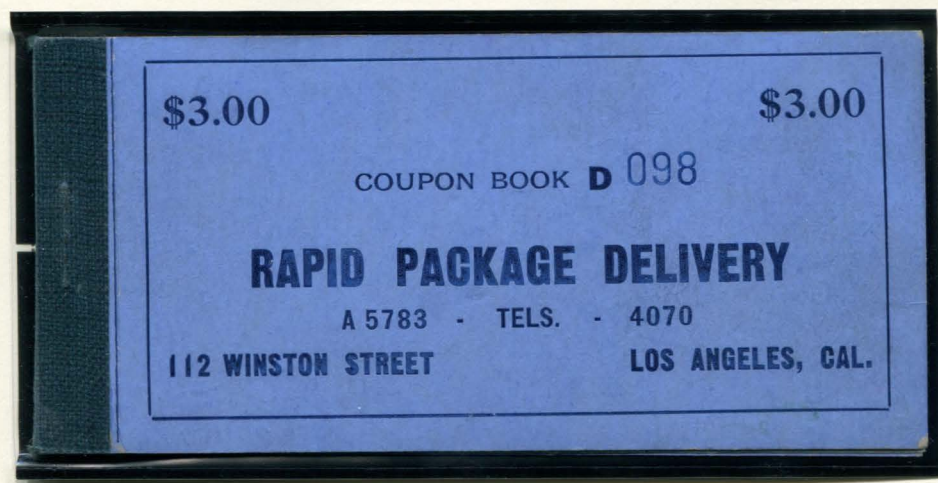
## RAPID PACKAGE DELIVERY



RAPID PACK. DELIVERY  
TYPE 3 (CIRCA 1913)  
10c BLUE ON GREEN  
COMMA AFTER "LOS ANGELES"



RAPID PACK. DELIVERY  
TYPE 3 (CIRCA 1913)  
10c BLUE ON GREEN  
VERTICAL PAIR  
NO COMMA AFTER "LOS ANGELES"  
COMMA AFTER "LOS ANGELES"



RAPID PACK. DELIVERY  
TYPE 3 (CIRCA 1913)  
10c BLUE ON BLUE-GREEN  
ONE PAIR / ONE PANE OF THREE  
NO COMMA AFTER "LOS ANGELES" / COMMA AFTER "LOS ANGELES"  
TYPE 3 BOOKLET COVER  
BLUE ON BLUE  
CONTROL # D 098