

THE
MIKE FARRELL
COLLECTION
OF INDEPENDENT MAILS

INCLUDING THE HISTORY, FORGERIES, & FANTASIES OF
UNITED STATES, LOCAL POSTS, CARRIERS,
INDEPENDENT MAIL ROUTES, & EXPRESS CO.S

LANGTON & CO.

LANGTON'S EXPRESS / LANGTON'S YUBA RIVER EXPRESS /
LANGTON & BRO'S EXPRESS / LANGTON'S PIONEER EXPRESS /
LANGTON'S CALIFORNIA & NEVADA EXPRESS /
LANGTON'S HUMBOLDT EXPRESS

The information and identification within these selections is the individual work of the Farrell Collection. It is always recommended to consult multiple sources for additional information or opinions. Local post company descriptions are based on information available at the time of writing. Descriptions in the Farrell Collection were written based on personal research and sources including, but not limited to: Articles in the Carriers and Locals Society's The Penny Post; Amos Media's Scott Catalogue; Patton's The Private Local Post of the United States; Springer's Handbook of North American Cinderella Stamps; Lyons' Identifier for Carriers, Locals, Fakes Forgeries and Bogus Posts of the United States; articles in the USPCS's The Chronicle; Mosher's Catalog of Private Express Labels and Stamps; The Eastern Independent Mail Company Study Group's Eastern Independent Mail Companies and Express Mail Companies 1840-1845; Elliot Perry's Pat Paragraphs; James N. Drummond's Catalog of Philatelic Miscellany; and the notes of George Sloane and Gordon Stimmell.

Colors listed for stamps and forgeries are the opinions of the Farrell Collection based on viewing physical copies of the pieces under consistent lighting. Colors in the .pdfs may be slightly inaccurate due to manipulations from the scanning process, computer monitor settings, or (in event that the files are printed for offline viewing) the printing process.

Unless otherwise noted, stamps are identified by their Scott Catalogue numbers and forgeries are identified by their Lyons Identifier type. Scott numbers in parenthesis under listed forgeries represent approximately what stamp the forgery is attempting to imitate.

Copyright Amos Media Company - 2021

The Scott Numbers are the copyrighted property of Amos Media Company, and are used here under a licensing agreement with Amos. The marks Scott and Scott's are Registered in the U.S. Patent and Trademark Office, and are trademarks of Amos Media Company. No use may be made of these marks or of material in this publication, which is reprinted from a copyrighted publication of Amos Media Company., without the express written permission of Amos Media Company, Sidney, Ohio 45365.

LANGTON & CO.

Samuel W. Langton started his **Langton Express** in 1850. For the next fourteen years, he ran the express under several different names: Langton Yuba River Express, Langton & Co.'s Express, Langton & Bro's Express, Langton Pioneer Express, Langton's California and Nevada Express, and Langton's Humboldt Express.

Prior to moving to California in 1849, Langton studied printing in Washington, D.C. Once in California, he found that running an express business between mining camps was more lucrative than mining himself. His first express ran from February to August, 1850. It

was a one-man operation that carried mail over a route from Marysville to Nevada City and Downieville. From Downieville, he connected to Adams Express.

In August, 1850 he partnered with William T. Ballou, and the organization was

known as **Langton Yuba River Express**. This service

ran along the same routes, and operated until March, 1851. No

handstamps, franks, or labels were used during this period.

In March 1851, Ballou left the business. Langton partnered instead with Samuel L. Clapp and E. White.

For the next year the express operated under the name **Langton & Co.'s**. The express's first handstamps were used during this time period, though few are known today. No franks or labels were used.

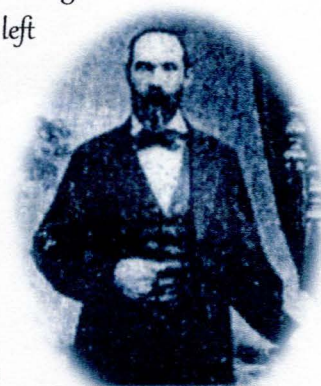
When the partnership with Clapp and White dissolved in April of 1852, Langton's brothers joined the business to form **Langton & Bro.'s** express. As the express expanded, it monopolized business in Yuba, Sierra, and most of western Nevada County. The Pioneer Banking House that Langton established in Downieville supported the express's service in the area. Although no printed franks or labels were used, corner cards and handstamps from this period are known.

Langton & Bro's planned to sell the express to Adams Express in February, 1855. However, Adams failed and dissolved that same month. Langton continued their service, but needed a new connecting service to keep in business. Reforming as **Langton's Pioneer Express**, a partnership was made with Freeman & Co.'s Express to deliver to the east coast. An alliance with Wells Fargo was also formed: Langton gave up their offices in San Francisco and Sacramento, while Wells Fargo left Downieville and routes around Yuba. The two expresses connected in Marysville. During this period, franked envelopes were printed and used by the company.

When silver and gold deposits were found near Comstock and Humboldt in 1860, Langton focused most of their efforts in those areas, opening new offices and beginning to move his headquarters from Downieville to Carson City.

In August, 1864 Langton died from injuries he received when he was thrown under a wagon. Shortly after, the express was sold to Lamping. Lamping's ownership did not last long. Wells Fargo terminated the agreements it had made with Langton after his death, and Lamping could not operate without their support.

MAP SHOWING LANGTON'S FIRST ROUTE
MARYVILLE, NEVADA, DOWNIEVILLE
ON BRITTON & REY MAP OF CALIFORNIA, 1853



PORTRAIT OF
SAMUEL W. LANGTON

LANGTON & CO.

No handstamps, franks, or labels are known used with Langton's first two express ventures. Langton & Co. did use handstamps, though existing pieces are rare. Langton & Bro's handstamps and corner cards also exist, and are more common, though still very scarce. The markings in these periods were not used as proof of payment, only to identify routes and handling.

It wasn't until the company reorganized as Langton's Pioneer Express that it began regular use of franks and labels for prepayment of service. Handstamps were still used for town markings.

A commonly used design for Langton's franks was a decorative oval surrounding three lines of text "Langton's / PAID / Pioneer Express." This design, in several variations, was used on 1854-1861 Nesbitt envelopes.



LAN-002
PAID BLACK ON WHITE
SEVEN ORNAMENTS IN BORDER
ON LEFT & RIGHT OF TOP & BOTTOM



LAN-002 : PAID BLACK
ON U34: 3¢ PINK ON WHITE | USPSS 71
BLUE LANGTON'S HANDSTAMPS (LAN-100)
MARYSVILLE & VIRGINIA

The cover above was carried from Virginia City to Marysville, then forwarded to its destination in Downieville.

LANGTON & CO.

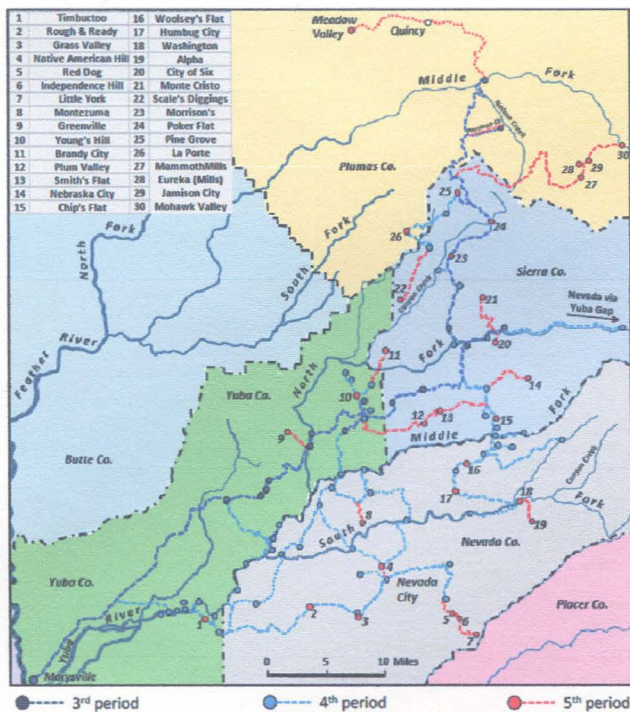
The cover below was mailed from Downieville to grocers Scalmanini & Frapolli in San Francisco.



LAN-002 : PAID BLACK
ON U34: 3¢ PINK ON WHITE | USPS 71
BLUE LANGTON'S HANDSTAMPS (LAN-100)
DOWNIEVILLE

The map at right shows the routes used by Langton's Pioneer Express. This map was created by Scott W. Prior for the exhibit *Expressing with Samuel W. Langton, 1852-1865*.

<https://www.rfrajola.com/PDR2020/SP1/SP1.pdf>



LANGTON & CO.

The cover below represents a conjunctive use along the partnership between Langton and Wells Fargo. The letter was carried by Langton's Pioneer Express from North San Juan to Marysville, where it was then exchanged with Wells, Fargo & Co. From there it was carried by Wells Fargo to San Francisco.

This cover is addressed to A. Block & Co., part of the firm Block & Furth, which operated in North San Juan. Block & Furth were general merchants who also dealt in exchange of gold dust.

ADVERTISEMENT PUBLISHED
IN THE *HYDRAULIC PRESS*
NORTH SAN JUAN, CALIFORNIA
JULY 6, 1861

LAN-003 : PAID BLUE
ON U35: 3c PINK ON BUFF | USPSS 77
BLUE WELLS, FARGO & CO. DOUBLE OVAL
DATESTAMP - MARYSVILLE - MARCH 10
BLUE NORTH SAN JUAN
STRAIGHT LINE HANDSTAMP (LAN-108)

A. BLOCK & CO., Nevada, | DAN. FURTH, San Juan.

BLOCK & FURTH

DEALERS IN THE

CLOTHING!

BOOTS!

HATS, & C.,

Corner Main and Flume streets

NORTH SAN JUAN.

Strictly One Price.

dealt for ———— gold dust

GOLD DUST

Purchased at the highest rates, by

——— BLOCK & FURTH.

Brick Store, corner Main and Flume,

North San Juan.

BLOCK & FURTH

Are now prepared to furnish

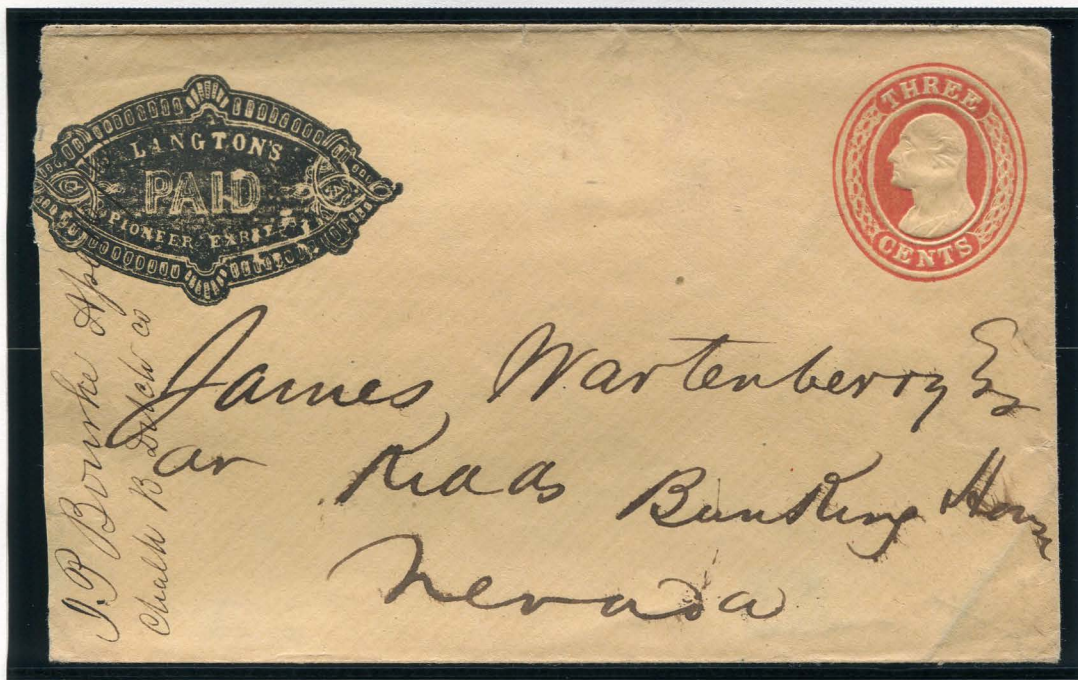
DRAFTS ON NEW YORK,



LANGTON & CO.

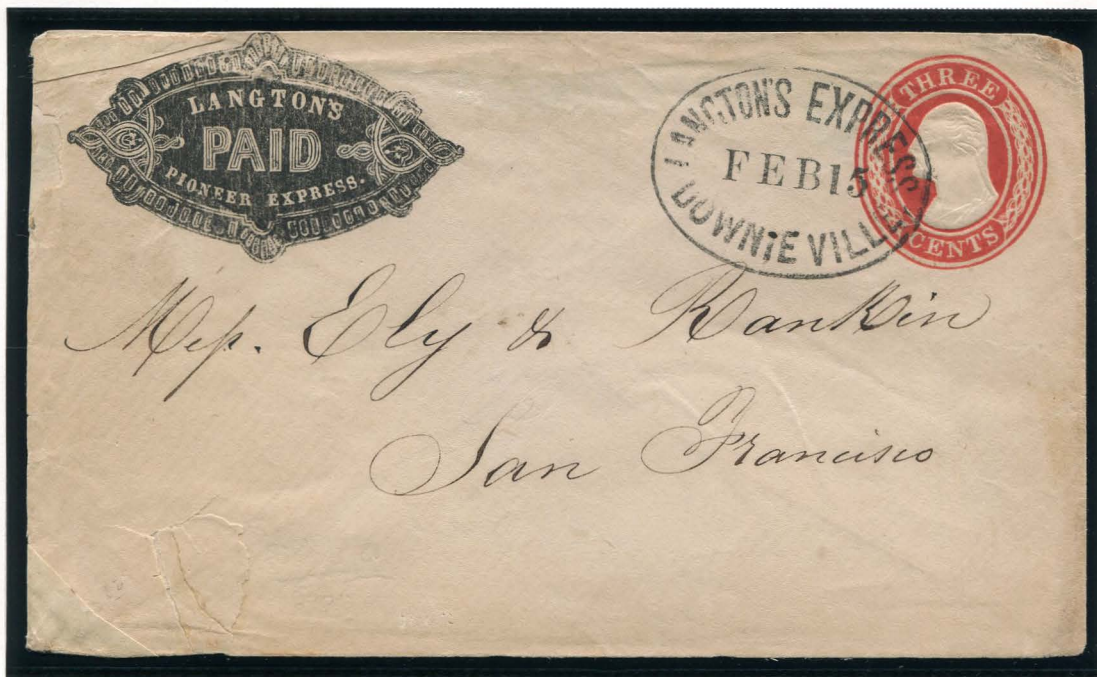


LAN-008 : PAID BLACK
EIGHT ORNAMENTS IN BORDER AT LEFT & RIGHT ON TOP & BOTTOM
ON U9 : 3c RED ON WHITE | UPSS 15
RED DOWNIEVILLE OVAL HANDSTAMP (LAN-100)



LAN-008 : PAID BLACK
EIGHT ORNAMENTS IN BORDER AT LEFT & RIGHT ON TOP & BOTTOM
ON U10 : 3c RED ON BUFF | UPSS 18

LANGTON & CO.



LAN-008 : PAID BLACK
ON U10 : 3¢ RED ON BUFF | UPSS 18
BLACK DOWNIEVILLE OVAL DATESTAMP (LAN-111)
FEBRUARY 15

AN UNUSUAL EXAMPLE OF AN
ENVELOPE USED AS A WRAPPER

PHOTOCOPY OF REVERSE
WELLS FARGO & CO EXPRESS
MARYSVILLE WAX SEAL
(REDUCED TO 75%)



LAN-008 : PAID BLACK
ON U10 : 3¢ RED ON BUFF | UPSS 18
BLUE WELLS FARGO & CO. DOUBLE OVAL DATESTAMP
MARYSVILLE - DECEMBER 10 | WC3786

LANGTON & CO.



LAN-008 : PAID BLACK
 ON U18A : 10¢ PALE GREEN ON BUFF | UPSS 28
 BACK CIRCULAR GRID HANDSTAMP CANCEL
 BLACK DOWNIEVILLE CDS - AUGUST 17
 RED EUREKA CITY OVAL HANDSTAMP (LAN-101) ON REVERSE



LAN-008 : PAID BLACK
 ON U16 : 10¢ GREEN ON BUFF | UPSS 26
 BLUE WELLS FARGO EXPRESS DOUBLE CIRCLE DATESTAMP
 SAN FRANCISCO - JANUARY 28
 RED BOSTON DOUBLE CIRCLE DATESTAMP - MARCH 5

LANGTON & CO.



LAN-008 : PAID BLACK
BLUE OVAL TIMBUCTOO HANDSTAMP (LAN-107E)
ON PIECE WITH
BLUE OVAL WELLS FARGO & CO HANDSTAMP
SAC. MESSENGER - JUNE 18

The Langton's Pioneer Express "PAID" fancy oval frank was later reproduced by philatelic forgers. These fakes were produced either as cut squares, or gummed as bogus labels. The examples below were produced by S. A. Taylor.



LGTX-L10
TAYLOR - FORM 14
BLACKISH BROWN ON WHITE
(LAN-008)



LGTX-L10
TAYLOR - FORM 14
BROWN ON CREAM LAID
(LAN-008)



LGTX-L10
TAYLOR - FORM AA17
RED ON WHITE
(LAN-008)



LGTX-L10
TAYLOR - FORM 14
RED ON CREAM
(LAN-008)

LANGTON & CO.



LGTX-L10
TAYLOR - FORM S2
BLACK ON YELLOWISH
LAID W/ RULED BACK



LGTX-L10
TAYLOR - FORM S2
BLACK ON SALMON
LAID W/ RULED BACK



LGTX-L10
TAYLOR - FORM S2
BLACK ON SALMON
LAID



LGTX-L10
TAYLOR - FORM S2
BLACK ON LIGHT BLUE GREEN
LAID



LGTX-L10
TAYLOR - FORM S2
BLACK ON GRAY
LAID



LGTX-L10
TAYLOR - FORM S2
BLACK ON ORANGE BUFF

LANGTON & CO.



LGTX-L10
TAYLOR - FORM S18
DARK BLUE ON WHITE



LGTX-L10
TAYLOR - FORM S18
BLUE ON WHITE



LGTX-L10
TAYLOR - FORM S18
BLUE ON BLUEISH LAID



LGTX-L10
TAYLOR
BLACK ON WHITE



LGTX-L10
TAYLOR
BLACK ON BUFF

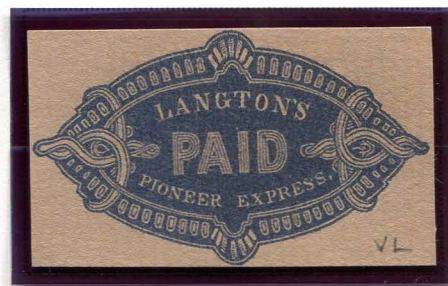
LANGTON & CO.



LGTX-L10
TAYLOR
BLUE ON WHITE



LGTX-L10
TAYLOR-STYLE (VARIATION)
BLACK ON GREEN



LGTX-L10
MODERN (TAYLOR)
BLUE ON BUFF LAID

The two examples above are very similar to the Taylor forgery. The example at left is cruder, and may be a very late printing of the Taylor forgery, or a new forgery based on Taylor's work. The example at right is a modern reproduction, printed from a copy of the Taylor forgery.

The following forgeries are altogether different. A key identifying difference can be seen in the three leftmost square ornaments in the top curved border, just above the twisted middle decoration. In the previous forgeries, these squares are open at the bottom, in the following forgeries, all three squares are closed at the bottom. The creator of these forgeries is unknown.



LGTX-IUNLISTED
BLACK ON WHITE

LANGTON & CO.



LGTX-[UNLISTED]
ORANGE RED ON WHITE



LGTX-[UNLISTED]
BROWN ON CREAM



LGTX-[UNLISTED]
GREEN BLUE ON WHITE



LGTX-[UNLISTED]
BLUE ON CREAM



LGTX-[UNLISTED]
BLUE ON WHITE
CUT TO SHAPE

LANGTON & CO.

Langton's Pioneer Express also used Franks like the example below, printed in black or blue on the top or vertically on left side. This design was used on Nesbitt envelopes from 1861-1864.



LAN-010 : PAID BLACK
ON U59 : 3¢ PINK ON BUFF | UPSS 128-1

The example below is a forgery of a design used by Langton's Nevada Mail and Express Co. The real frank was printed on Nesbitt 1864 envelopes.

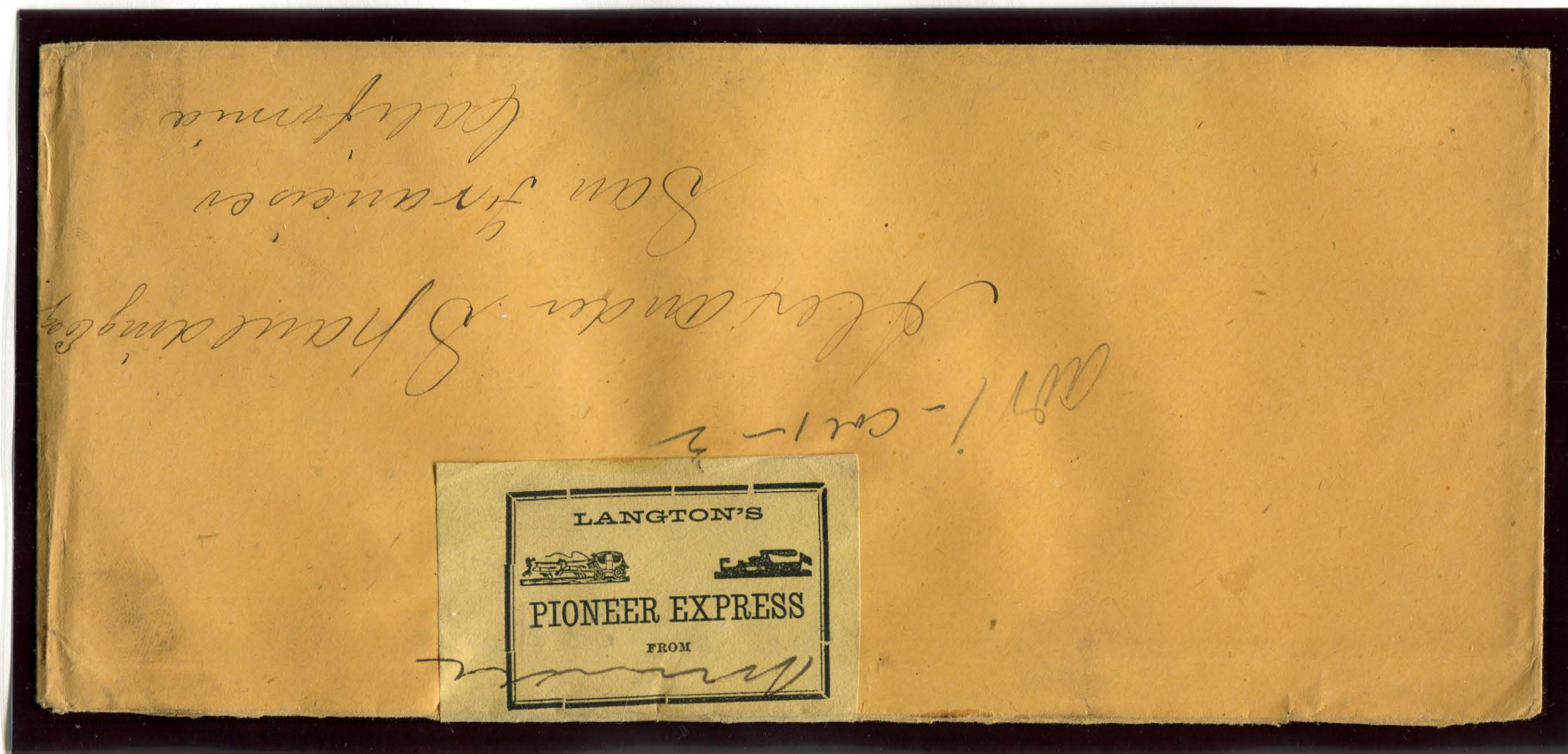


FORGERY
BLACK ON WHITE
(LAN-013 / LNMX-L1)

LANGTON & CO.

Langton's Pioneer Express issued adhesive labels in two designs. The design featured here is a rectangle with a double-line border and simple images of a stagecoach and steamship. This type of label was printed with either a town name or a blank space where a town name could be handwritten.

The cover below was carried from Unionville, Nevada Territory to San Francisco, California.



LAN-601 | LGTX-L1
BLACK ON YELLOW
MANUSCRIPT "UNIONVILLE"

LANGTON & CO.

The cover below shows the conjunctive use between Langton's Pioneer Express and Wells Fargo. The letter was carried first by Wells, Fargo & Co. from San Francisco to Marysville, where it was collected by Langton's.

Langton's Express carried the package to Downieville, where it was paid for. In addition to the Wells Fargo C.O.D. label, "COD" is written in manuscript to the right of the address.



LAN-601 | LGTX-L1
BLACK ON BUFF - MARYSVILLE (x2)
ON PARTIAL PACKAGE WITH
WFCX-L548
BLACK ON ORANGE - SAN FRANCISCO (x2)
WFCX-L177
BLACK ON YELLOW

LANGTON & CO.

Langton's company issued labels during the Pioneer Express period, but never issued adhesive labels under the name "Langton & Co." However, this name was used to produce bogus labels which were sold to collectors. These bogus labels read "Money Package / Over All Our Routes" and feature a ship in the central vignette, despite Langton's Express only operating land routes. They are known to exist in a variety of colors and values.



BOGUS 1
5 FOR A DOLLAR
GOLD ON
THIN BLUISH GRAY



BOGUS 1
5 FOR A DOLLAR
GOLD ON
THIN WHITE



BOGUS 1
5 FOR A DOLLAR
COPPER ON
THIN WHITE



BOGUS 1
10 FOR A DOLLAR
BLACK ON
ORANGE SC



BOGUS 1
15 FOR A DOLLAR
BLACK ON
GREEN SC



BOGUS 1
15 FOR A DOLLAR
BLUE BLACK ON
WHITE



BOGUS 1
20 FOR A DOLLAR
BLACK ON
THIN BLUISH GRAY



BOGUS 1
20 FOR A DOLLAR
BLACK ON
WHITE

LANGTON & CO.



BOGUS 1
30 FOR A DOLLAR
GOLD ON
THIN WHITE



BOGUS 1
30 FOR A DOLLAR
GOLD ON
THIN BLUE



BOGUS 1
30 FOR A DOLLAR
GOLD ON
PALE BUFF

A second type of Langton & Co. bogus was made with the same design, but includes an error in the circular border reading "Momey Package".



BOGUS 2
10 FOR A DOLLAR
BLUE ON
WHITE



BOGUS 2
20 FOR A DOLLAR
BLUE ON
THICK WHITE
WITH FAKE CANCEL
& PERFORATIONS



BOGUS 2
20 FOR A DOLLAR
RED ON
WHITE



BOGUS 2
20 FOR A DOLLAR
RED ON
WHITE
WITH FAKE CANCEL



BOGUS 2
20 FOR A DOLLAR
BLUE ON
WHITE

LANGTON & CO.



BOGUS 2
30 FOR A DOLLAR
GREEN ON
WHITE



BOGUS 2
30 FOR A DOLLAR
GREEN ON
WHITE WITH
FAKE PERFORATIONS



BOGUS 2
40 FOR A DOLLAR
DULL PURPLE ON
STIFF WHITE