

THE  
MIKE FARRELL  
❧ COLLECTION ❧  
OF INDEPENDENT MAILS

INCLUDING THE HISTORY, FORGERIES, & FANTASIES OF  
UNITED STATES, LOCAL POSTS, CARRIERS,  
INDEPENDENT MAIL ROUTES, & EXPRESS CO.S

MENANT & CO.'S EXPRESS

The information and identification within these selections is the individual work of the Farrell Collection. It is always recommended to consult multiple sources for additional information or opinions. Local post company descriptions are based on information available at the time of writing. Descriptions in the Farrell Collection were written based on personal research and sources including, but not limited to: Articles in the Carriers and Locals Society's The Penny Post; Amos Media's Scott Catalogue; Patton's The Private Local Post of the United States; Springer's Handbook of North American Cinderella Stamps; Lyons' Identifier for Carriers, Locals, Fakes Forgeries and Bogus Posts of the United States; articles in the USPCS's The Chronicle; Mosher's Catalog of Private Express Labels and Stamps; The Eastern Independent Mail Company Study Group's Eastern Independent Mail Companies and Express Mail Companies 1840-1845; Elliot Perry's Pat Paragraphs; James N. Drummond's Catalog of Philatelic Miscellany; and the notes of George Sloane and Gordon Stimmell.

Colors listed for stamps and forgeries are the opinions of the Farrell Collection based on viewing physical copies of the pieces under consistent lighting. Colors in the .pdfs may be slightly inaccurate due to manipulations from the scanning process, computer monitor settings, or (in event that the files are printed for offline viewing) the printing process.

Unless otherwise noted, stamps are identified by their Scott Catalogue numbers and forgeries are identified by their Lyons Identifier type. Scott numbers in parenthesis under listed forgeries represent approximately what stamp the forgery is attempting to imitate.

Copyright Amos Media Company - 2021

The Scott Numbers are the copyrighted property of Amos Media Company, and are used here under a licensing agreement with Amos. The marks Scott and Scott's are Registered in the U.S. Patent and Trademark Office, and are trademarks of Amos Media Company. No use may be made of these marks or of material in this publication, which is reprinted from a copyrighted publication of Amos Media Company., without the express written permission of Amos Media Company, Sidney, Ohio 45365.

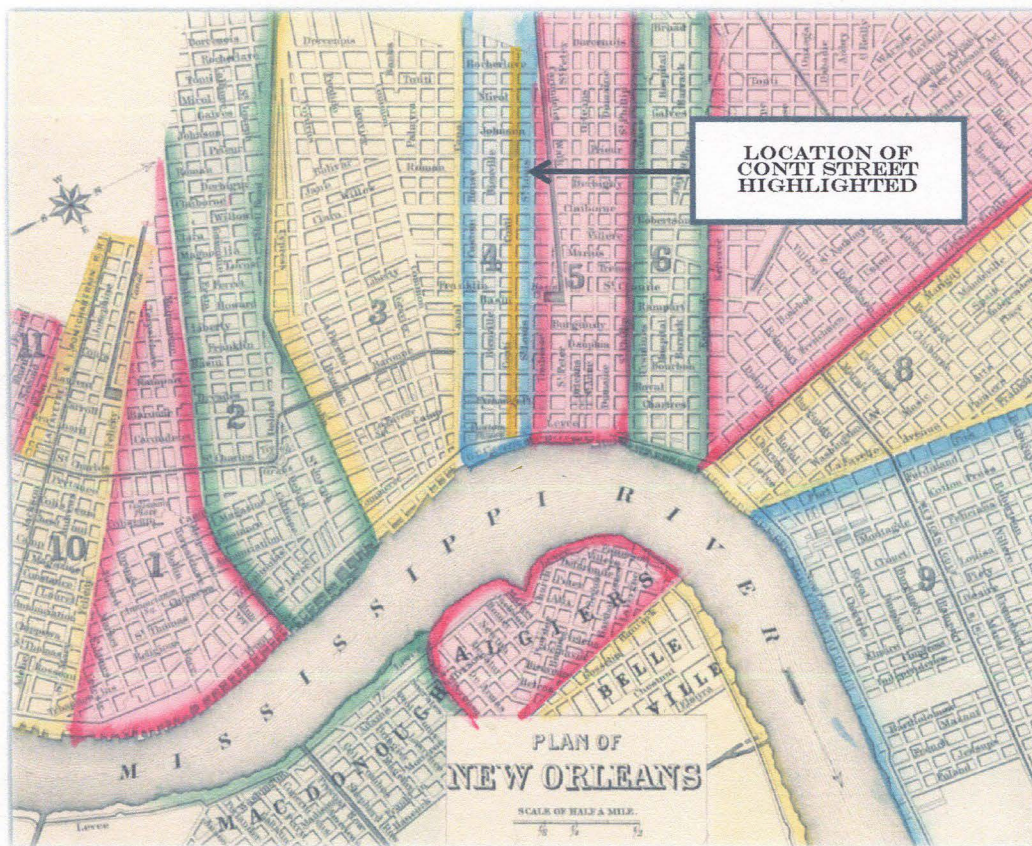


# MENANT & CO.'S EXPRESS

This local post, located at 21 Conti Street in New Orleans, ran from 1853 to 1856. Genuine stamps for this post are very rare; only four are known, all with faults. These 2¢ stamps were printed in dark red.



104L1  
GENUINE  
2¢ DARK RED  
ON WHITE  
PF CERT 489453



PLAN OF NEW ORLEANS BY AUGUST S. MITCHELL, 1863  
FROM NEW YORK PUBLIC LIBRARY DIGITAL COLLECTIONS



# MENANT & CO.'S EXPRESS

Many forgeries of the Menant & Co. stamps are similar to the original and to each other, resulting in disagreements in identification. The forgeries known as "Forgery A" are known for having a thicker upper border in some printings. They are listed in up to three variations, considered plate positions.

"Forgery B" stamps could arguably be considered another variation from this same printing, as it is very similar but with slight variations. These variations are no more distinct than those used to identify "Forgery A1" and "Forgery A2" from "Forgery A".



FORGERY A  
2¢ ORANGE RED  
ON WHITE  
(104L1)



FORGERY A  
2¢ ORANGE RED  
ON WHITE  
(104L1)



FORGERY B  
2¢ ORANGE RED  
ON WHITE  
(104L1)



FORGERY B  
2¢ ORANGE RED  
ON WHITE  
(104L1)



FORGERY B  
2¢ ORANGE RED  
ON BUFF  
(104L1)

Although the printer of Forgery A and Forgery B is uncertain, it is probable that these stamps were produced by Scott. "Forgery C" is a known Scott forgery, identified as an illustration cut from his albums.



FORGERY C  
SCOTT  
2¢ BLACK  
ON WHITE  
(104L1)

ILLUSTRATION,  
J. W. SCOTT'S  
INTERNATIONAL  
ALBUM 1888



# MENANT & CO.'S EXPRESS

S. Allan Taylor designed fake stamps under the Menant & Co. Express name that bare no resemblance to the genuine stamps. These bogus stamps, with a rectangular border and central oval, come in three types, identified by a change of typeface in the central text.



BOGUS 1  
TAYLOR - FORM AA14  
2c BLACK  
ON BLUE GRAY



BOGUS 1  
TAYLOR - FORM AA14  
2c BLACK  
ON MAUVE



BOGUS 1  
TAYLOR - FORM AA14  
2c BLACK  
ON BRIGHT GREEN SC



BOGUS 1  
TAYLOR - FORM AA14  
2c BLACK  
ON GREEN SC



BOGUS 2  
TAYLOR - FORM 3  
2c BLACK  
ON BRIGHT GREEN SC



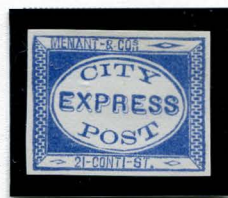
BOGUS 2  
TAYLOR - FORM 3  
2c BLACK  
ON LIGHT BLUE SC



BOGUS 2  
TAYLOR - FORM 3  
2c BLACK  
ON MAGENTA SC



BOGUS 2  
TAYLOR - FORM 15  
2c BLACK  
ON WHITE H. LAID



BOGUS 2  
TAYLOR - FORM 15  
2c ULTRAMARINE  
ON WHITE H. LAID



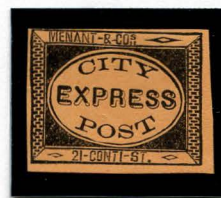
BOGUS 2  
TAYLOR - FORM 15  
2c ULTRAMARINE  
ON WHITE V. LAID



BOGUS 2  
TAYLOR - FORM 15  
2c BLACK  
ON VIOLET BLUE



BOGUS 2  
TAYLOR - FORM 15  
2c BLACK  
ON GRAY GREEN



BOGUS 2  
TAYLOR - FORM 15  
2c BLACK  
ON ORANGE BUFF



# MENANT & CO.'S EXPRESS



BOGUS 2  
TAYLOR - FORM 20  
2c GREEN  
ON GREENISH



BOGUS 2  
TAYLOR - FORM 20  
2c GREEN  
ON PALE GREEN



BOGUS 2  
TAYLOR - FORM 20  
2c GREEN  
ON PALE GRAY BROWN



BOGUS 2  
TAYLOR - FORM AA13  
2c RED VIOLET  
ON YELLOW



BOGUS 2  
TAYLOR - FORM AA13  
2c RED VIOLET  
ON YELLOW LAID



BOGUS 2  
TAYLOR - FORM AA13  
2c RED VIOLET  
ON WHITE



BOGUS 2  
TAYLOR - FORM AA13  
2c RED VIOLET  
ON SALMON



BOGUS 2  
TAYLOR - FORM AA13  
2c RED VIOLET  
ON VIOLET GRAY



BOGUS 2  
TAYLOR - FORM AB5  
2c RED VIOLET  
ON LAVENDER SC



BOGUS 2  
TAYLOR - FORM AB5  
2c RED VIOLET  
ON GREENISH BLUE SC



# MENANT & CO.'S EXPRESS



BOGUS 2  
TAYLOR  
2¢ BLACK  
ON WHITE



BOGUS 2  
TAYLOR  
2¢ DARK BLUE  
ON WHITE



BOGUS 2  
TAYLOR  
2¢ BLUE  
ON WHITE



BOGUS 2  
TAYLOR  
2¢ LIGHT BLUE  
ON WHITE



BOGUS 2  
TAYLOR  
2¢ BLUE  
ON BUFF



BOGUS 2  
TAYLOR  
2¢ DARK BLUE  
ON BUFF



BOGUS 2  
TAYLOR  
2¢ BLACK  
ON RED



BOGUS 2  
TAYLOR  
2¢ BROWN  
ON WHITE



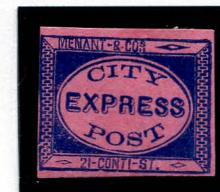
BOGUS 2  
TAYLOR  
2¢ REDDISH BROWN  
ON WHITE



BOGUS 2  
TAYLOR  
2¢ BLACK  
ON LAVENDER SC



BOGUS 2  
TAYLOR  
2¢ GRAY BROWN  
ON PINKISH



BOGUS 2  
TAYLOR  
2¢ BLUE  
ON BRIGHT PINK LAID



# MENANT & CO.'S EXPRESS



BOGUS 2 VAR  
TAYLOR  
2¢ BLACK  
ON BLUE SC

The example at left is a slight variation, with the word "POST" missing most of its bottom.



BOGUS 3  
TAYLOR - FORM S7  
2¢ RED  
ON WHITE



BOGUS 3  
TAYLOR - FORM S7  
2¢ RED  
ON YELLOW



BOGUS 3  
TAYLOR  
FORM S7 SHADE  
2¢ ORANGE RED  
ON WHITE