

THE
MIKE FARRELL
COLLECTION
OF INDEPENDENT MAILS

INCLUDING THE HISTORY, FORGERIES, & FANTASIES OF
UNITED STATES, LOCAL POSTS, CARRIERS,
INDEPENDENT MAIL ROUTES, & EXPRESS CO.S

METROPOLITAN
ERRAND & CARRIER EXPRESS CO.

The information and identification within these selections is the individual work of the Farrell Collection. It is always recommended to consult multiple sources for additional information or opinions. Local post company descriptions are based on information available at the time of writing. Descriptions in the Farrell Collection were written based on personal research and sources including, but not limited to: Articles in the Carriers and Locals Society's The Penny Post; Amos Media's Scott Catalogue; Patton's The Private Local Post of the United States; Springer's Handbook of North American Cinderella Stamps; Lyons' Identifier for Carriers, Locals, Fakes Forgeries and Bogus Posts of the United States; articles in the USPS's The Chronicle; Mosher's Catalog of Private Express Labels and Stamps; The Eastern Independent Mail Company Study Group's Eastern Independent Mail Companies and Express Mail Companies 1840-1845; Elliot Perry's Pat Paragraphs; James N. Drummond's Catalog of Philatelic Miscellany; and the notes of George Sloane and Gordon Stimmell.

Colors listed for stamps and forgeries are the opinions of the Farrell Collection based on viewing physical copies of the pieces under consistent lighting. Colors in the .pdfs may be slightly inaccurate due to manipulations from the scanning process, computer monitor settings, or (in event that the files are printed for offline viewing) the printing process.

Unless otherwise noted, stamps are identified by their Scott Catalogue numbers and forgeries are identified by their Lyons Identifier type. Scott numbers in parenthesis under listed forgeries represent approximately what stamp the forgery is attempting to imitate.

METROPOLITAN ERRAND & CARRIER EXPRESS CO.

Abraham M. Hinkley was a forwarder for Adams' California Express before starting his own passenger and baggage express in Aspinwall (now Colón), Panama. Hinkley delivered baggage and served as a guide for passengers between Aspinwall and Panama City from around 1853 until 1855.

ADVERTISEMENT FROM THE
SAN FRANCISCO EVENING JOURNAL
SAN FRANCISCO, CALIFORNIA
FEBRUARY 14, 1854

In 1855, Hinkley settled in New York, where he started A.M. Hinkley's Express Co., which quickly became the Metropolitan Errand & Carrier Express Co. when Hiram Dixon and George G. Jones joined as partners. Dixon had previously worked as a bookkeeper for Adams & Co., and Jones had run the short-lived Jones' City Post in Brooklyn.

Metropolitan Errand & Carrier Express Co. was officially organized in mid 1855. The company was originally located at 110 Broadway, but moved to 11 Pine Street shortly after opening.

CALL FOR HORSES AND WAGONS
TO SERVE METROPOLITAN ERRAND &
CARRIER EXPRESS CO.

NEW YORK HERALD, NEW YORK
AUGUST 22, 1855

EXPRESSES.
THE METROPOLITAN ERRAND AND CARRIER EXPRESS Company, in consequence of the increase of business have leased the entire basement of the spacious marble building 11 Pine street, adjoining the new banking house of Messrs. Duncan, Sherman & Co., where they will henceforth be always ready to attend to postal and parcel delivery, with promptness and despatch.

Through Tickets.

THE MAIL ROUTE
TO NEW YORK AND NEW ORLEANS.

ISTHMUS TRANSIT TICKETS.



BAGGAGE AND PASSENGER
EXPRESS.



A. M. HINKLEY, Aspinwall,
LATE FORWARDER FOR ADAMS & CO'S EXPRESS

Is now prepared to furnish Transit Tickets, from Panama to Aspinwall, covering all expense of transport for Passengers and Baggage, by mules and by Rail Road: making, with the Mail Steamers, the long desired THROUGH TICKET.

PASSENGER TICKETS for sale in San Francisco.
Baggage will be checked for at Panama, on arrival of the steamers from San Francisco, freight therefor payable on delivery in Aspinwall.

Ladies and Children carefully conveyed across, under charge of trusty guides.

Parties purchasing tickets in San Francisco will have precedence on arriving on the Isthmus. Apply to

J. HAWES,

corner Sacramento and Davis streets, up-stairs.

AGENTS—J. Hawes, San Francisco; Wm. Nelson, Panama; A. M. Hinkley, Aspinwall; A. Barstow, New Orleans; John W. Carrington, New York

Feb 6



HORSES, WAGONS AND HARNESS.—WANTED, FOR immediate use, by the Metropolitan Errand and Carrier Express Company, fifty good horses, fifty express wagons, and fifty sets of harness. Contractors please apply between the hours of 10 and 3, at the principal office of the company, 110 Broadway.

A. M. HINKLEY, President.

NOTICE OF MOVE TO 11 PINE STREET
ADDRESS

NEW YORK HERALD, NEW YORK
JANUARY 30, 1856

METROPOLITAN ERRAND & CARRIER EXPRESS CO.

 Stops at your Door and goes to all parts of the World!! 

THE METROPOLITAN ERRAND AND CARRIER EXPRESS COMPANY,

Are now prepared to receive and deliver Letters, Parcels, verbal or confidential Messages, Packages, Baggage, Marketing, and other matters not over 20 lbs. in weight; make Collections, effect Sales or Purchases, receive and execute Orders, and furnish Receipts or Through Bills of Lading, over all the principal railroads, steamboat and steamship lines out of New York.

THE FOLLOWING IS OUR TARIFF OF RATES:

Letters, Newspapers, Parcels, etc., admissable through the aperture of our		
"Postal Box," prepared stamps,.....		1 cent.
Do. do.	To Collect on Delivery.....	2 do.
Do. do.	Registered or Receipted for.....	5 do.
Answers Returned—verbal or written.....		5 do.
Packages not exceeding two pounds.....		5 do.
Do. over 2 lbs. and under 5 lbs.....		10 do.
Do. do 5 lbs. do. 10 lbs.....		20 do.
Special Messengers always ready at the principal office.....		25 do.
For further information as to Time, Rates, etc., etc., apply to Principal Office, 174		
Pine-street, adjoining Duncan, Sherman and Co.'s new Banking House.		224-46

NEWSPAPER ADVERTISEMENT
SPIRITUAL TELEGRAPH, NEW YORK CITY, NEW YORK
SEPTEMBER 20, 1856

Although the post offered rates for letters to Great Britain, Russia, Germany, and Hawaii, surviving covers indicate that most of its business was local delivery. The post appeared successful, reporting in 1857 that they delivered over 380,000 letters the previous year.

The Metropolitan Errand & Carrier Express Company ran until at least 1858. By this time, ownership of the company had transferred and Jones was President. By 1860, the post ceased operations.

METROPOLITAN ERRAND & CARRIER EXPRESS CO.

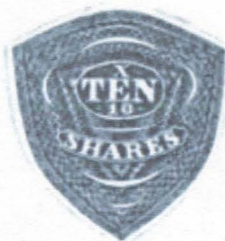
Metropolitan Errand & Carrier Express Co. issued stamps in four denominations: 1¢, 5¢, 10¢ and 20¢. The stamps were printed by the banknote engraving firm Baldwin, Bald & Cousland, using a stock security-printed shield for the base of the design. The stamps were printed in sheets of one hundred subjects, arranged as a ten by ten square.

107L2P3D
TRIAL COLOR PLATE PROOF
5¢ DULL GREEN



STOCK SHIELD DIE IN UPPER LEFT CORNER
\$5 BANK NOTE - BALDWIN, BALD & COUSLAND
BANK OF DESOTO, NEBRASKA

The stock shield design used to make the stamps was used by Baldwin, Bald & Cousland for many other printing jobs, such as the bank note shown above. This shield was also printed on the stock certificates for the Metropolitan Errand & Carrier Express Co.



PHOTOCOPY OF SHIELD DESIGN
AS USED ON STOCK CERTIFICATE

METROPOLITAN ERRAND & CARRIER EXPRESS CO.

Genuine stamps were printed on a thinner paper than the reprints, and usually have a crackled gum. The red orange shade is also lighter than that of the reprint's shade, which is more a brownish red. However, due to oxidation, some genuine stamps can appear darker as well.



107L1 : GENUINE
1¢ RED ORANGE (SHADE)
ON WHITE



107L1 : GENUINE
1¢ RED ORANGE (SHADE)
ON WHITE



107L1 : GENUINE
1¢ RED ORANGE (SHADE)
ON WHITE



107L1 : GENUINE
1¢ RED ORANGE (SHADE)
ON WHITE



107L1 : GENUINE
1¢ RED ORANGE (SHADE)
ON WHITE
CUT TO SHAPE



107L1 : GENUINE
1¢ RED ORANGE (SHADE)
ON WHITE
CUT TO SHAPE



107L1 : GENUINE
1¢ RED ORANGE
(BLuish SHADE)
ON WHITE



107L1 : GENUINE
1¢ RED ORANGE (SHADE) ON WHITE
HORIZONTAL PAIR

METROPOLITAN ERRAND & CARRIER EXPRESS CO.



107L1 : GENUINE
1¢ RED ORANGE (SHADE) ON WHITE
CUT TO SHAPE
TIED TO PIECE WITH
BLACK "PAID" CANCELLATION



107L1 : GENUINE
1¢ RED ORANGE (SHADE)
ON WHITE
WITH BLACK "PAID"
CANCELLATION



107L1 : GENUINE
1¢ RED ORANGE (SHADE)
ON WHITE
CUT TO SHAPE
WITH BLACK "PAID"
CANCELLATION



107L1 : GENUINE
1¢ RED ORANGE (SHADE)
ON WHITE
WITH BLACK OVAL GRID
CANCELLATION



107L2 : GENUINE
5¢ RED ORANGE (SHADE)
ON WHITE
WITH PARTIAL IMPRINT

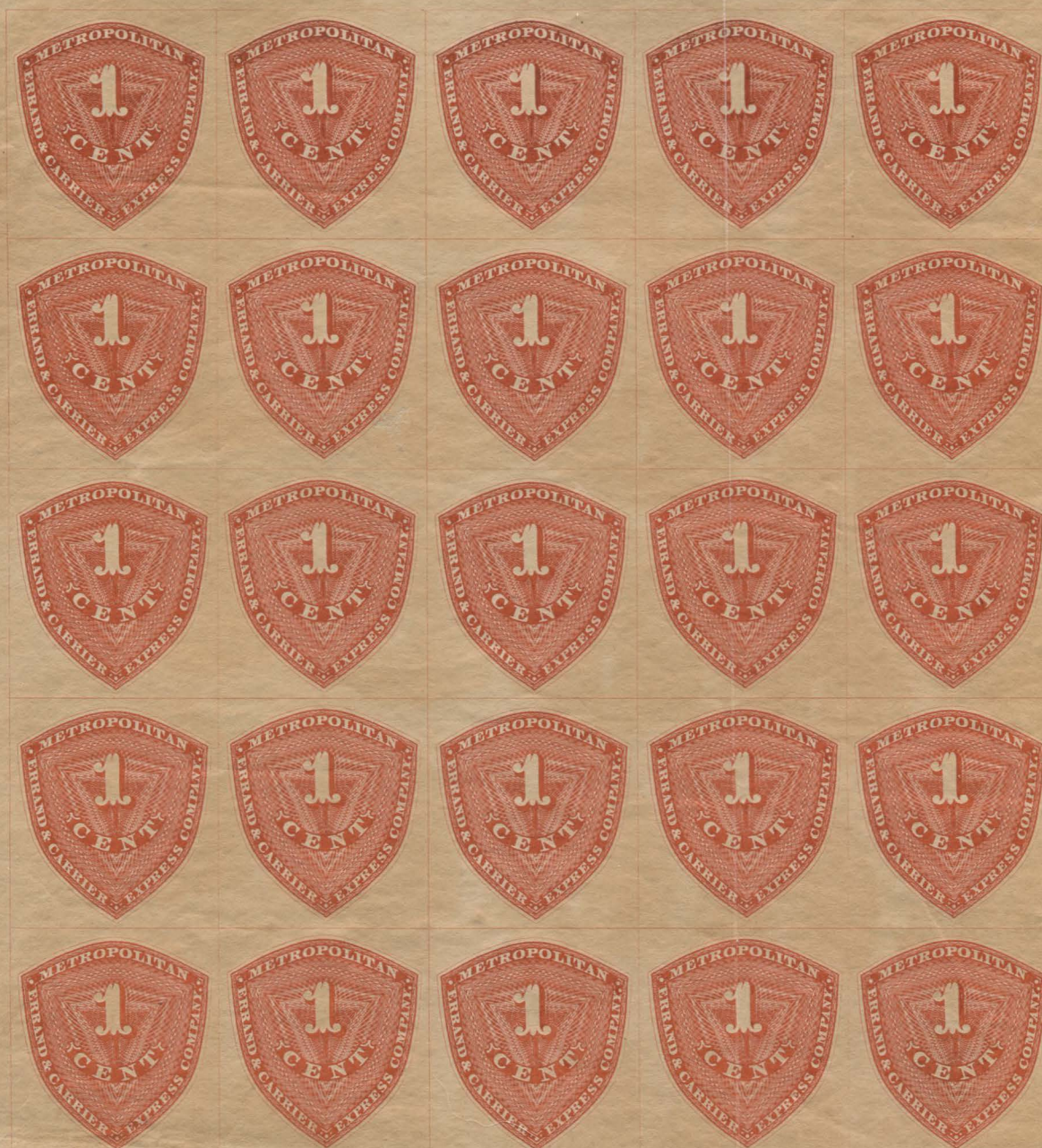


107L2 : GENUINE
5¢ RED ORANGE (SHADE)
ON WHITE
CUT TO SHAPE



107L4 : GENUINE
20¢ RED ORANGE (SHADE)
ON WHITE

METROPOLITAN ERRAND & CARRIER EXPRESS CO.



107L1 : GENUINE
1c RED ORANGE ON WHITE
UPPER LEFT PANE OF TWENTY-FIVE

METROPOLITAN ERRAND & CARRIER EXPRESS CO.



107L1 : GENUINE
1c RED ORANGE ON WHITE
IRREGULAR BLOCK OF TWENTY-FOUR

METROPOLITAN ERRAND & CARRIER EXPRESS CO.



Dr. Sir
 There is doubt either of
 the gentleman named by you
 a good man but as I have not
 the letter

of
 the
 cur
 y
 all
 the
 re
 I
 for



275

J. H. H. H. H. H.
 56 West 3/3 St
 (PAID) New York

Either of the following would I
 think be proper persons

E. H. Sadlow
 Theodore Bleeker
 G. A. Saachi
 A. R. Eno
 John S. Howell

I have not spoken to either

107L1 : GENUINE
 1¢ RED ORANGE (SHADE)
 ON WHITE
 CUT TO SHAPE
 CANCELED "PAID" HS
 ROUNDED RECTANGLE
 APS CERT #96817

CONTENTS OF LETTER
 DOCKETED (2ND PAGE)
 APRIL 25, 1856

METROPOLITAN ERRAND & CARRIER EXPRESS CO.

The cover below was delivered locally to Evert Augustus Duyckinck at 20 Clinton Place. Duyckinck was an editor and publisher who wrote for multiple literary magazines in New York. He primarily worked with collections of poetry and biographies. In 1845, he helped Edgar Allan Poe publish his Tales collection, selecting the stories included and editing the publication.

Duyckinck was an influential critic in the 1840-1850s literary scene. He was friends with Herman Melville and a member of the American Antiquarian Society. Both E.A. Duyckinck and his brother, George L., lived at 20 Clinton Place in 1856.



PORTRAIT OF E.A. DUYCKINK



107L1 : GENUINE
1¢ RED ORANGE (SHADE) ON WHITE
CANCELED "PAID" ROUNDED RECTANGLE HANDSTAMP

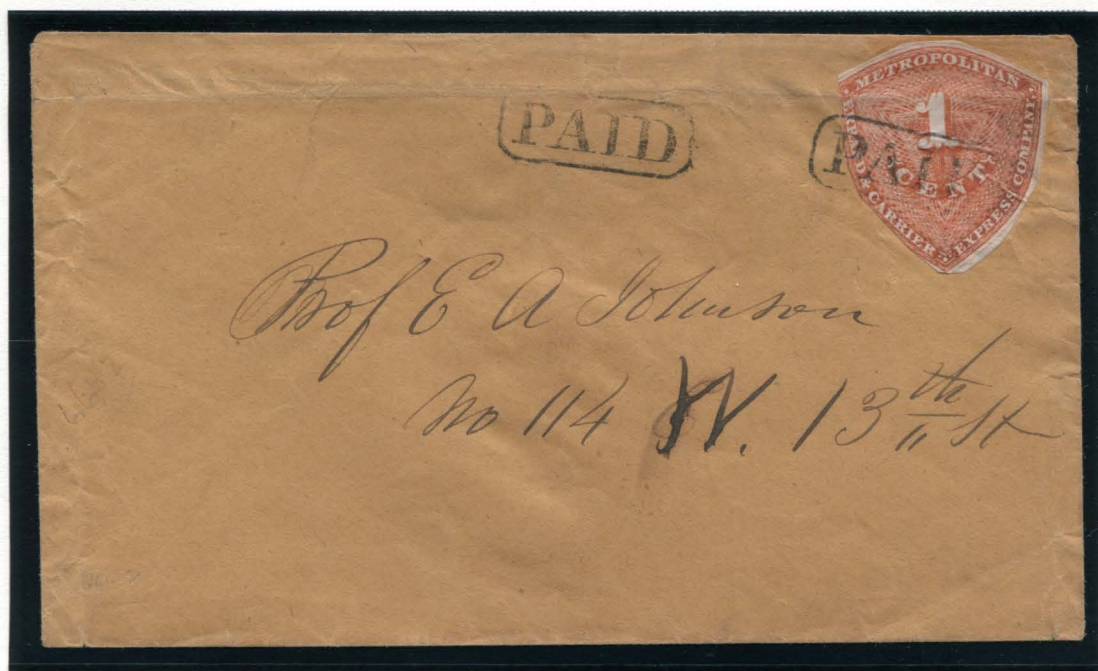
METROPOLITAN ERRAND & CARRIER EXPRESS CO.

This cover is addressed to Robert Marshall, care of Clark, southwest corner Broadway and 13th Street. It was mailed with a pair of 1¢ stamps. Metropolitan Errand & Carrier express charged a 2¢ rate on letters that were not prepaid. The stamps would have been affixed by the carrier after collecting payment from the addressee. This cover is one of only three covers known with a pair of Metropolitan E&C express stamps.



107L1 : GENUINE - 1¢ RED ORANGE (SHADE) ON WHITE
HORIZONTAL PAIR, CANCELLED BY "PAID" ROUNDED RECTANGLE HANDSTAMP
PSE CERT #00116355

METROPOLITAN ERRAND & CARRIER EXPRESS CO.



107L1 : GENUINE
1¢ RED ORANGE (SHADE) ON WHITE
CUT TO SHAPE
CANCELED "PAID" ROUNDED RECTANGLE HANDSTAMP

The cover above was carried by Metropolitan Errand & Carrier Express to Professor Ebenezer A. Johnson. Johnson was a professor of Latin at New York University for 53 years.



PORTRAIT OF E.A. JOHNSON
FROM NEW YORK UNIVERSITY AND THE CITY: AN
ILLUSTRATED HISTORY BY FRUSCIANO & PETTIT

METROPOLITAN ERRAND & CARRIER EXPRESS CO.

P & E Williams was a grocer, with a business located at 192 Front Street in 1855. Williams was listed in the J. Laid & Co. Brooklyn Directory at 230 Fulton St. in 1858, the same year they advertised the sale of the business.

Letters to this address are known carried by several different local posts, including Metropolitan E&C, Hussey's, and Hanford's Pony Express.



107L1 : GENUINE
1¢ RED ORANGE (SHADE) ON WHITE
CANCELED "PAID" ROUNDED RECTANGLE HANDSTAMP

METROPOLITAN ERRAND & CARRIER EXPRESS CO.

An attempt was made to list the known essays and proofs in *The Penny Post* of October 2004. As such, the proposed numbering system from that article is used.

It is possible some of these essays and proofs were printed by the *American Bank Note Company*. Examples are known with inscribed numbers typical for their dies. Supposedly, the ABN Company got their hands on the original dies after a merger with other banknote companies.



107L1E1
1¢ BLACK
ON THICK WHITE CARD



107L4E
(UNLISTED)
20¢ BLUE
DIE SUNK ON CARD



107L1E3
1¢ BLACK ON INDIA
COMPOSITE
WITH BANKNOTE INDICIA

METROPOLITAN ERRAND & CARRIER EXPRESS CO.



107L1P1A
1¢ RED ORANGE
DIE PROOF
ON INDIA



107LP1B
1¢ BLACK
DIE PROOF
ON INDIA



107L4P1E
1¢ GRAY BROWN
DIE PROOF
ON INDIA



107L3-107L2P1A
10¢ & 5¢ RED ORANGE
COMPOSITE DIE PROOF
ON INDIA



107L3-107L2P1B
10¢ & 5¢ BLACK
COMPOSITE DIE PROOF
ON INDIA

METROPOLITAN ERRAND & CARRIER EXPRESS CO.



107L3-107L2P1c
10¢ & 5¢ BLUE
COMPOSITE DIE PROOF
ON INDIA



107L3-107L2P1d
10¢ & 5¢ DULL GREEN
COMPOSITE DIE PROOF
ON INDIA

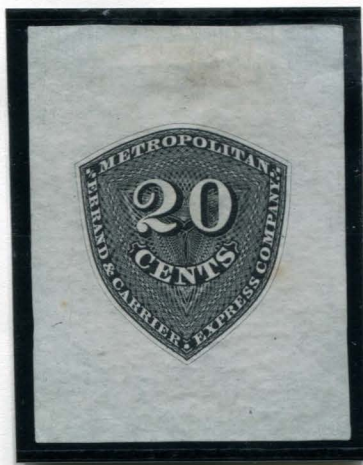


107L3-107L2P1e
10¢ & 5¢ GRAY BROWN
COMPOSITE DIE PROOF
ON INDIA

METROPOLITAN ERRAND & CARRIER EXPRESS CO.



107L4P1A
20¢ RED ORANGE
DIE PROOF
ON INDIA



107L4P1B
20¢ BLACK
DIE PROOF
ON INDIA



107L4P1C
20¢ BLUE
DIE PROOF
ON INDIA



107L4P1D
20¢ DULL GREEN
DIE PROOF
ON INDIA



107L4P1E
20¢ GRAY BROWN
DIE PROOF
ON INDIA

METROPOLITAN ERRAND & CARRIER EXPRESS CO.



107L1P3c
1¢ BLUE
PLATE PROOF
ON INDIA
PAIR



107L2P3d
5¢ DULL GREEN
PLATE PROOF
ON INDIA
PAIR



107L3P3e
10¢ GRAY BROWN
PLATE PROOF
ON INDIA
PAIR



107L3P3f
10¢ YELLOW BROWN
PLATE PROOF
ON INDIA
PAIR



107L4P3a
20¢ RED ORANGE
PLATE PROOF
ON INDIA
PAIR

METROPOLITAN ERRAND & CARRIER EXPRESS CO.



107L1P4A
1¢ RED ORANGE
PLATE PROOF
INDIA ON CARD
IMPRINT PAIR



107L1P4C
1¢ BLUE
PLATE PROOF
INDIA ON CARD
PAIR



107L2P4A
5¢ RED ORANGE
PLATE PROOF
INDIA ON CARD



107L2P4D
5¢ DULL GREEN
PLATE PROOF
INDIA ON CARD
PAIR

METROPOLITAN ERRAND & CARRIER EXPRESS CO.



107L3P4A
10¢ RED ORANGE
PLATE PROOF
INDIA ON CARD
PAIR



107L3P4E
10¢ GRAY BROWN
PLATE PROOF
INDIA ON CARD
PAIR



107L3P4F
10¢ YELLOW BROWN
PLATE PROOF
INDIA ON CARD
PAIR



107L4P4A
20¢ RED ORANGE
PLATE PROOF
INDIA ON CARD
PAIR

METROPOLITAN ERRAND & CARRIER EXPRESS CO.

The reprints were printed from the same dies on 100 stamps, in a brownish red and in blue, on a thicker paper than the genuine stamps. They exist both with and without gum.



REPRINT
1¢ BROWNISH RED
ON WHITE
GUMMED
(107L1)



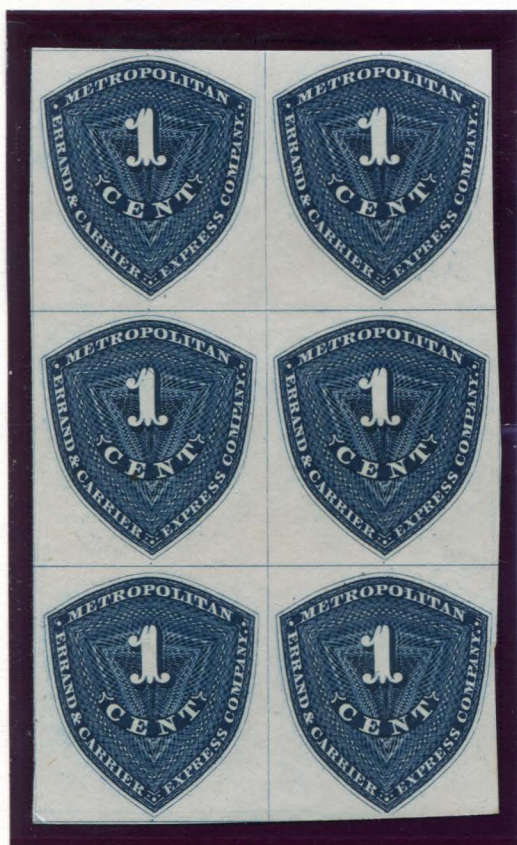
REPRINT
1¢ BLUE
ON WHITE
GUMMED
(107L1)



REPRINT
1¢ BROWNISH RED
ON WHITE
UNGUMMED
(107L1)



REPRINT
1¢ BLUE
ON WHITE
UNGUMMED
(107L1)



REPRINT
1¢ BLUE
ON WHITE
GUMMED BLOCK OF SIX
(107L1)



REPRINT
1¢ BLUE
ON WHITE
GUMMED IMPRINT PAIR
(107L1)

METROPOLITAN ERRAND & CARRIER EXPRESS CO.



REPRINT
5¢ BROWNISH RED
ON WHITE
GUMMED
(107L2)



REPRINT
5¢ BLUE
ON WHITE
GUMMED
(107L2)



REPRINT
5¢ BROWNISH RED
ON WHITE
UNGUMMED
(107L2)



REPRINT
5¢ BLUE
ON WHITE
UNGUMMED
(107L2)



REPRINT
5¢ BROWNISH RED
ON WHITE
GUMMED BLOCK OF FOUR
(107L2)



REPRINT
5¢ BLUE
ON WHITE
UNGUMMED PAIR
(107L2)

METROPOLITAN
ERRAND & CARRIER EXPRESS CO.



REPRINT
5c BLUE ON WHITE
GUMMED BLOCK OF TWENTY-FIVE
(107L2)

METROPOLITAN ERRAND & CARRIER EXPRESS CO.



REPRINT
10¢ BROWNISH RED
ON WHITE
GUMMED
(107L3)



REPRINT
10¢ BLUE
ON WHITE
GUMMED
(107L3)



REPRINT
10¢ BROWNISH RED
ON WHITE
UNGUMMED
(107L3)



REPRINT
10¢ BLUE
ON WHITE
UNGUMMED
(107L3)

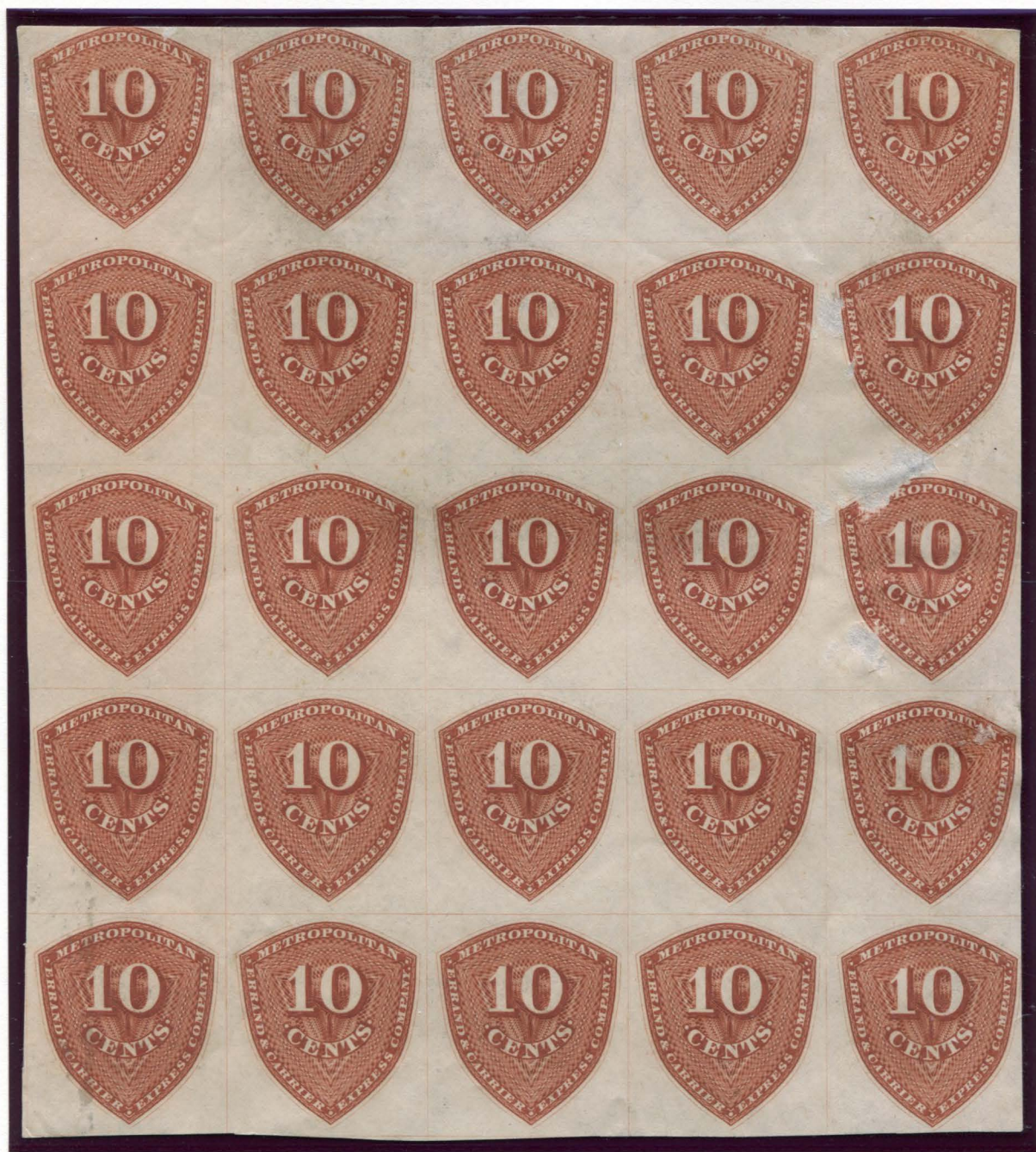


REPRINT
10¢ BROWNISH RED
ON WHITE
UNGUMMED BLOCK OF FOUR
(107L3)



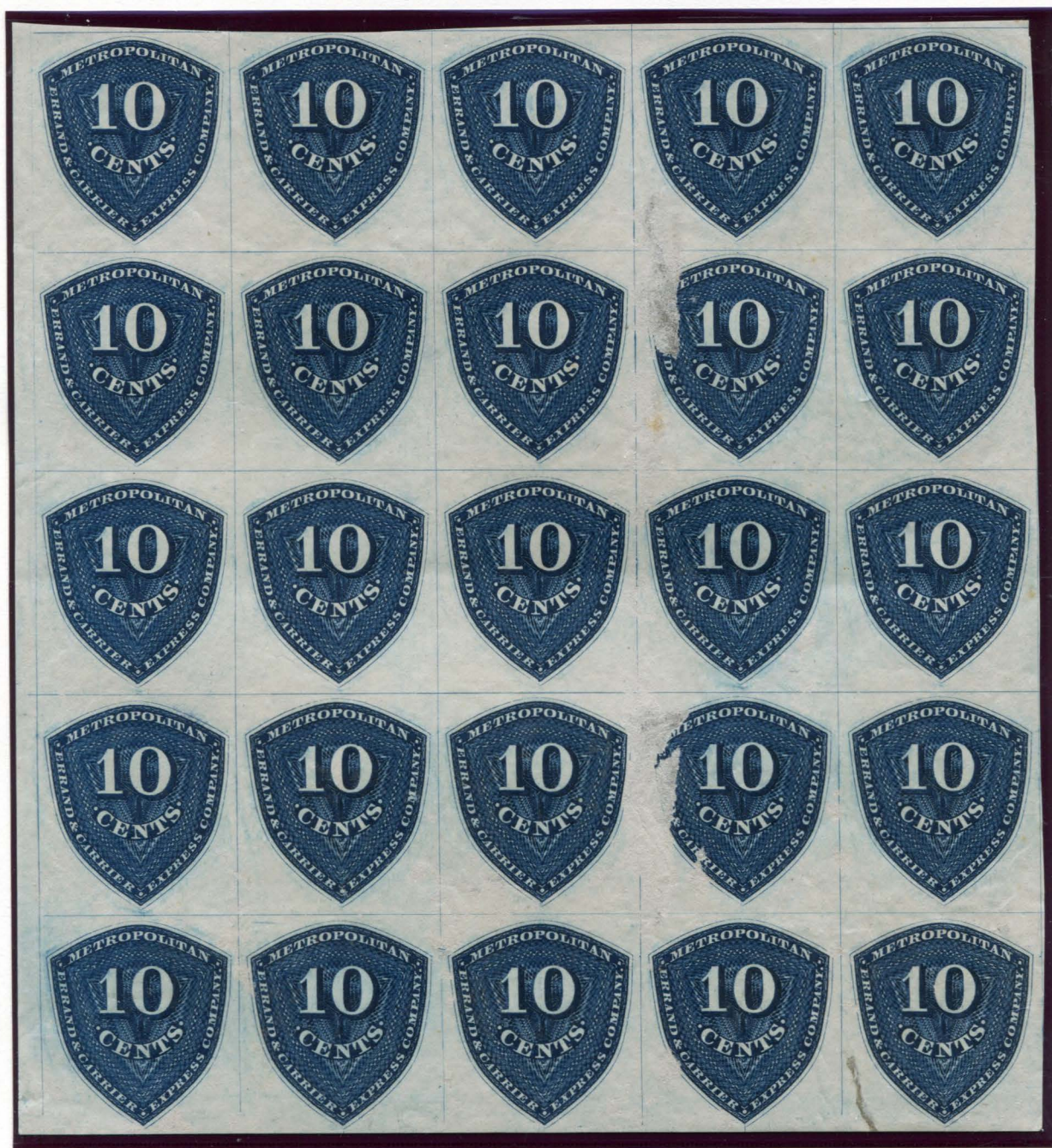
REPRINT
10¢ BLUE
ON WHITE
UNGUMMED PAIR
(107L3)

METROPOLITAN
ERRAND & CARRIER EXPRESS CO.



REPRINT
10c BROWNISH RED ON WHITE
GUMMED BLOCK OF TWENTY-FIVE
(107L3)

METROPOLITAN
ERRAND & CARRIER EXPRESS CO.



REPRINT
10c BLUE ON WHITE
GUMMED BLOCK OF TWENTY-FIVE
(107L3)

METROPOLITAN ERRAND & CARRIER EXPRESS CO.



REPRINT
20¢ BROWNISH RED
ON WHITE
GUMMED
(107L4)



REPRINT
20¢ BLUE
ON WHITE
GUMMED
(107L4)



REPRINT
20¢ BROWNISH RED
ON WHITE
UNGUMMED
(107L4)



REPRINT
20¢ BLUE
ON WHITE
UNGUMMED
(107L4)



REPRINT
20¢ BLUE
ON WHITE
GUMMED BLOCK OF NINE
(107L4)

METROPOLITAN
ERRAND & CARRIER EXPRESS CO.



REPRINT
20¢ BROWNISH RED ON WHITE
GUMMED BLOCK OF TWENTY-FIVE
(107L4)

METROPOLITAN
ERRAND & CARRIER EXPRESS CO.



REPRINT
20¢ BLUE ON WHITE
UNGUMMED BLOCK OF TWENTY
(107L4)

METROPOLITAN ERRAND & CARRIER EXPRESS CO.

The following reprints all have "Specimen" stamped on or hole-punched through. Most likely this was done by collectors to differentiate them from the genuine stamps. The first "Specimen" overprint is also known on a Kidder's forgery.



REPRINT
5¢ BROWNISH RED
ON WHITE
PURPLE "SPECIMEN."
OVERPRINT
(107L2)



REPRINT
10¢ BROWNISH RED
ON WHITE
PURPLE "SPECIMEN."
OVERPRINT
(107L3)



REPRINT
10¢ BLUE
ON WHITE
RED "SPECIMEN"
OVERPRINT
(107L3)



REPRINT
20¢ BLUE
ON WHITE
RED "SPECIMEN"
OVERPRINT
(107L4)



REPRINT
1¢ BLUE
ON WHITE
HOLE-PUNCHED
"SPECIMEN"
(107L3)



REPRINT
5¢ BLUE
ON WHITE
HOLE-PUNCHED
"SPECIMEN"
(107L2)

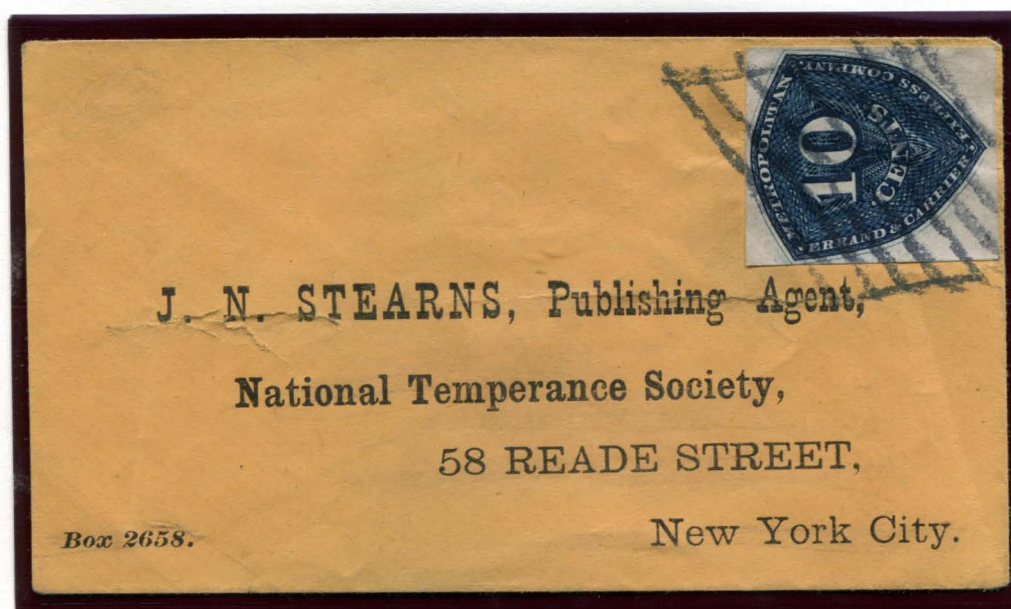


REPRINT
20¢ BLUE
ON WHITE
HOLE-PUNCHED
"SPECIMEN"
(107L4)

METROPOLITAN ERRAND & CARRIER EXPRESS CO.

The cover below is clearly a fake usage of one of the reprint stamps, and little effort was put into making it look like a real use. The original stamps were never issued in blue, and the 10¢ rate was meant for packages of 2 to 5 lbs. The grid cancel is also nothing like any of the cancels the post actually used.

On top of this, the National Temperance Society wasn't founded until 1865, and the publishing agent J. N. Stearns didn't have his office at 58 Reade Street until 1871, which would have made this usage at least 10 years after the close of the post.



REPRINT
10¢ BLUE ON WHITE
FAKE USAGE ON COVER
(107L3)

METROPOLITAN ERRAND & CARRIER EXPRESS CO.

Most of the forgeries can easily be told apart from the genuine stamps, as they are generally missing the outer line around the shield. The lathwork is usually less detailed as well, often giving the stamps a blurry appearance.

This first forgery is the closest to the genuine stamp and was probably engraved by photo-etching. Besides the missing outer lines on all the stamp, there are a few flaws that can be used to tell them apart, such as:

- On the 1¢: A clear flaw above the first "R" of "CARRIER".
- On the 5¢: A clear flaw on top of the lower half of the "C" of "CENT".
- On the 10¢: A clear flaw connecting to the bottom of the "C" of "COMPANY".
- On the 20¢: A clear claw under the second "O" of "METROPOLITAN".



FORGERY A
1¢ DULL CHOCOLATE
ON WHITE
(107L1)



FORGERY A
5¢ DULL CHOCOLATE
ON WHITE
(107L2)



FORGERY A
10¢ DULL CHOCOLATE
ON WHITE
(107L3)



FORGERY A
20¢ DULL CHOCOLATE
ON WHITE
(107L4)



FORGERY A
1¢ DULL ORANGE
ON BUFF
(107L1)



FORGERY A
5¢ DULL ORANGE
ON BUFF
(107L2)



FORGERY A
10¢ DULL ORANGE
ON WHITE
(107L3)



FORGERY A
20¢ DULL ORANGE
ON BUFF
(107L4)

METROPOLITAN ERRAND & CARRIER EXPRESS CO.



FORGERY A
1¢ BLUE
ON WHITE
(107L1)



FORGERY A
5¢ BLUE
ON WHITE
(107L2)



FORGERY A
10¢ BLUE
ON WHITE
(107L3)



FORGERY A
20¢ BLUE
ON WHITE
(107L4)



FORGERY A
1¢ DULL BLUE
ON BUFF
(107L1)



FORGERY A
5¢ DULL BLUE
ON WHITE
(107L2)



FORGERY A
10¢ DULL BLUE
ON WHITE
(107L3)



FORGERY A
20¢ DULL BLUE
ON BUFF
(107L4)

METROPOLITAN ERRAND & CARRIER EXPRESS CO.

The next forgery is missing the outer line around all the values, except for the 1¢ stamps. Unlike the clear thin line on the genuine stamps, this line is blotchy and broken.

The other three values (5¢, 10¢, 20¢) are quite different from the 1¢ design. The text is thinner, most notably on the "O"s. They are also missing the checkerboard pattern inside the shield, and use the triangles at the ends of "CENTS" on all three values, which normally only appear on the 5¢ design.

This forgery is sometimes catalogued as two different types, depending on whether the printing is clear or blurry.



FORGERY B
1¢ BRIGHT RED
ON WHITE
(107L1)



FORGERY B (D)
1¢ RED
ON WHITE
(107L1)



FORGERY B (D)
5¢ RED
ON WHITE
(107L2)



FORGERY B (D)
10¢ RED
ON WHITE
(107L3)



FORGERY B (D)
20¢ RED
ON WHITE
(107L4)



FORGERY B
1¢ RED
ON WHITE
(107L1)



FORGERY B
5¢ RED
ON WHITE
(107L2)



FORGERY B
20¢ RED
ON WHITE
(107L4)

METROPOLITAN ERRAND & CARRIER EXPRESS CO.



FORGERY B (D)
1¢ PALE RED ORANGE
ON WHITE
(107L1)



FORGERY B (D)
5¢ PALE RED ORANGE
ON WHITE
(107L2)



FORGERY B (D)
10¢ PALE RED ORANGE
ON WHITE
(107L3)



FORGERY B (D)
20¢ PALE RED ORANGE
ON WHITE
(107L4)



FORGERY B
5¢ PALE RED
ON WHITE
(107L2)



FORGERY B
10¢ PALE RED
ON WHITE
(107L3)



FORGERY B (D)
5¢ RED ORANGE
ON WHITE
(107L2)



FORGERY B (D)
10¢ RED ORANGE
ON WHITE
(107L3)



FORGERY B (D)
20¢ RED ORANGE
ON WHITE
(107L4)

METROPOLITAN ERRAND & CARRIER EXPRESS CO.



FORGERY B
1¢ RED ORANGE
ON WHITE
(107L1)



FORGERY B
5¢ RED ORANGE
ON WHITE
(107L2)



FORGERY B
10¢ RED ORANGE
ON WHITE
(107L3)



FORGERY B
20¢ RED ORANGE
ON WHITE
(107L4)

A more modern forgery is attributed to stamp dealer Stirling. It exists only in the 10¢ value, and the colors aren't anything like the genuine stamps.



FORGERY F
STIRLING
10¢ PURPLE
ON GRAYISH
(107L3)



FORGERY F
STIRLING
10¢ PURPLE
ON YELLOW
(107L3)

METROPOLITAN ERRAND & CARRIER EXPRESS CO.

Both J.-B. Moens and J. W. Scott had their own engravings used for their catalogues. While Moens only pictured the 10¢ stamp in his catalogue, it was based to make forgeries of in all four values.

Scott used an image of the 5¢ stamp for his albums, and is one of the few designs that has an outer line around the shield.



FORGERY G
AFTER MOENS
10¢ YELLOW
ON WHITE
(107L3)



FORGERY H
SCOTT (ALBUM CUT)
5¢ BLACK
ON WHITE
(107L2)

The unlisted forgeries below were apparently cut from a company rate brochure, which had the different values printed on both sides. The 1¢ and 5¢ stamps are on each other's reverse, and the same is the case for the 10¢ and 20¢ stamps.

The large numerals on the 5¢, 10¢, and 20¢ stamps are quite different than on any other forgery.



UNLISTED FORGERY
5¢ BLUE
ON WHITE
WITH 1¢ ON REVERSE
(107L2)



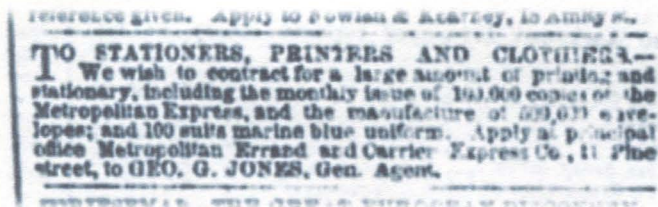
UNLISTED FORGERY
10¢ BLUE
ON WHITE
WITH 20¢ ON REVERSE
(107L3)



UNLISTED FORGERY
20¢ BLUE
ON WHITE
WITH 10¢ ON REVERSE
(107L4)

METROPOLITAN ERRAND & CARRIER EXPRESS CO.

In addition to stamp, Metropolitan Errand & Carrier Express Co. also issued a 2¢ envelope. The design of the envelopes was similar to the stamps, a shield shape with the company name in the border and value in the center, but was much simpler with no security printing.



CLIP FROM THE NEW YORK HERALD, FEBRUARY 7, 1856

TO STATIONERS, PRINTERS AND CLOTHIERS. - We wish to contract for a large amount of printing and stationery, including the monthly issue of 100,000 copies of the Metropolitan Express, and the manufacture of 500,000 envelopes; and 100 suits marine blue uniform. Apply at principal office Metropolitan Errand and Carrier Express Co., 11 Pine street, to GEO. G. JONES, Gen. Agent.

The only 2¢ rate Metropolitan E & C offered was for collect-on-delivery mail, something that would not be sent in a prepaid envelope. The envelope was probably intended to pay the 1¢ local delivery rate, with an additional cent added to compensate for the price of the envelope.

After the post closed, the dies for the stamps owned by engravers Baldwin, Bald and Cousland were eventually passed into the American Bank Note Company archives. It is unknown who produced the envelopes for Metropolitan E & C, but after the post closed, the envelope dies were passed to stamp dealer George Hussey, who used them to make reprints.

Genuine envelope stamps are rare. Only one used entire is recorded. Reprints of the envelopes are more common.



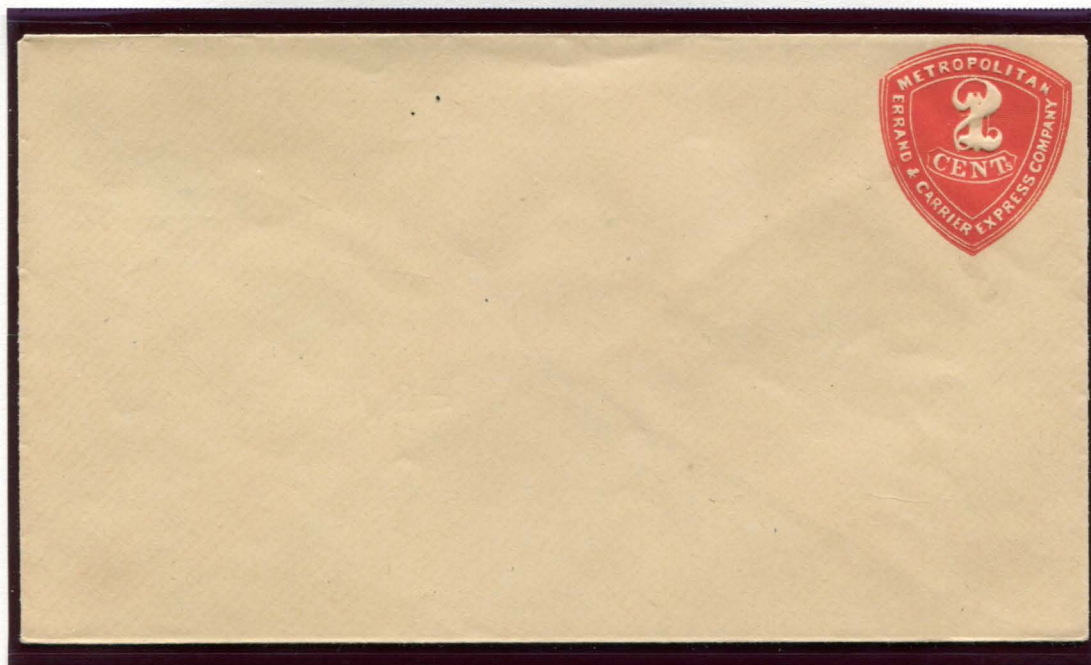
107LU1 : GENUINE
1¢ RED ORANGE
ON AMBER D. LAID
MANUSCRIPT CANCEL
BOXED "PAID" HS



REPRINT (107LU1)
HUSSEY
1¢ RED ORANGE
ON BUFF H. LAID

METROPOLITAN ERRAND & CARRIER EXPRESS CO.

Hussey's reprints are made with the original die and can be difficult to differentiate from the genuine. The reprints are generally inked and embossed more heavily than the originals. There is also a difference in the envelope paper - the reprint paper is usually stiffer and more buff colored than amber.



HUSSEY REPRINT
1¢ RED ORANGE ON BUFF, NARROW DIAGONAL LAID
(107LU1)

METROPOLITAN ERRAND & CARRIER EXPRESS CO.

Forgeries of the envelopes exist as cut squares. While no genuine 1¢ stamped envelopes are known, this first forgery comes in both a 1¢ and a 2¢ value.



FORGERY A
1¢ GRAY
ON CREAM D. LAID
(107LU1)



FORGERY A
1¢ VIOLET
ON ORANGE H. LAID
(107LU1)



FORGERY A
2¢ DEEP RED
ON CREAM D. LAID
(107LU1)



FORGERY A
2¢ RED
ON CREAM V. LAID
(107LU1)



FORGERY A
2¢ RED
ON ORANGE H. LAID
(107LU1)

METROPOLITAN ERRAND & CARRIER EXPRESS CO.

J. W. Scott used the same die he used for his catalogue to make his forgeries. Unlike the original envelopes, there is no visible trace of a "1" under the large "2".



FORGERY B
SCOTT (ALBUM CUT)
2¢ BLACK
ON WHITE
(107LU1)



FORGERY B
SCOTT
2¢ DULL RED
ON WHITE
(107LU1)



FORGERY B
SCOTT
2¢ RED
ON WHITE
(107LU1)



FORGERY B
SCOTT
2¢ ORANGE
ON WHITE
(107LU1)



FORGERY B
SCOTT
2¢ ORANGE
ON BUFF
(107LU1)

The next design is based on the illustration in J.-B. Moens' catalogue, but is far from as clear. As it was copied from that catalogue, it also includes the extra frame line around the shield. It is possible this forgery was made by S. Allan Taylor. The colors fit his usual work, and he is known to have based his designs on images from Moens' catalogues.



FORGERY C
2¢ PINK
ON WHITE
(107LU1)



FORGERY C
2¢ DEEP PINK
ON WHITE
(107LU1)



FORGERY C
2¢ PINK VIOLET
ON WHITE
(107LU1)



FORGERY C
2¢ RED VIOLET
ON WHITE
(107LU1)