

THE
MIKE FARRELL
COLLECTION
OF INDEPENDENT MAILS

INCLUDING THE HISTORY, FORGERIES, & FANTASIES OF
UNITED STATES, LOCAL POSTS, CARRIERS,
INDEPENDENT MAIL ROUTES, & EXPRESS CO.S

MOODY'S PENNY DISPATCH

The information and identification within these selections is the individual work of the Farrell Collection. It is always recommended to consult multiple sources for additional information or opinions. Local post company descriptions are based on information available at the time of writing. Descriptions in the Farrell Collection were written based on personal research and sources including, but not limited to: Articles in the Carriers and Locals Society's The Penny Post; Amos Media's Scott Catalogue; Patton's The Private Local Post of the United States; Springer's Handbook of North American Cinderella Stamps; Lyons' Identifier for Carriers, Locals, Fakes Forgeries and Bogus Posts of the United States; articles in the USPCS's The Chronicle; Mosher's Catalog of Private Express Labels and Stamps; The Eastern Independent Mail Company Study Group's Eastern Independent Mail Companies and Express Mail Companies 1840-1845; Elliot Perry's Pat Paragraphs; James N. Drummond's Catalog of Philatelic Miscellany; and the notes of George Sloane and Gordon Stimmell.

Colors listed for stamps and forgeries are the opinions of the Farrell Collection based on viewing physical copies of the pieces under consistent lighting. Colors in the .pdfs may be slightly inaccurate due to manipulations from the scanning process, computer monitor settings, or (in event that the files are printed for offline viewing) the printing process.

Unless otherwise noted, stamps are identified by their Scott Catalogue numbers and forgeries are identified by their Lyons Identifier type. Scott numbers in parenthesis under listed forgeries represent approximately what stamp the forgery is attempting to imitate.

Copyright Amos Media Company - 2021

The Scott Numbers are the copyrighted property of Amos Media Company, and are used here under a licensing agreement with Amos. The marks Scott and Scott's are Registered in the U.S. Patent and Trademark Office, and are trademarks of Amos Media Company. No use may be made of these marks or of material in this publication, which is reprinted from a copyrighted publication of Amos Media Company., without the express written permission of Amos Media Company, Sidney, Ohio 45365.

MOODY'S PENNY DISPATCH

Robert J. Moody briefly operated this local post in Chicago from 1856 to 1857. He issued a 1¢ stamp for prepaid delivery to the post office or within the city. Genuine copies of this stamp, which are printed in black on red glazed surface colored paper, are quite rare. Less than 20 examples are recorded.

Of the stamps known, there are several variations, including different punctuation after "Dispatch" (period, colon, or comma) and "CHICAGO" in serif or sans serif type.

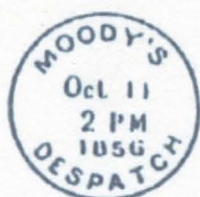


ILLUSTRATION OF
MOODY'S CIRCULAR
HANDSTAMP
FROM AMERICAN STAMP-
LESS COVER CATALOG



101L1
GENUINE
1¢ BLACK ON RED SC
COMMA AFTER DISPATCH
CHICAGO WITH SERIF
CIRCULAR HS CANCEL



101L1A
GENUINE
1¢ BLACK ON RED SC
COMMA AFTER DISPATCH
CHICAGO SANS SERIF
CIRCULAR HS CANCEL

ton. Mass 5 y
Moody Mathew, (of Davis, M. & Co.) 385 Wabash av.
1 y
Moody Robert, clerk, 72 Randolph st. Del 2 m
Moody Robt. J., city express post, 30 Dearborn st.
Del 6 m
Moody Thos., Leavitt st nr Lake. Eng 4 y
Moore & Richards, prod. and com., 14 River st. 2 y
Moore Royal, (of M. & Richards) h 92 Ohio st.

ROBERT J. MOODY'S LISTING IN
GEGER & CO.'S CHICAGO DIRECTORY 1856

The advertisement at right was published in the *Daily Democratic Press* on December 17, 1856. The ad, for John Lilly & Co., notes that "orders sent [...] through Moody's Despatch will receive prompt attention."

There are several theories for the rarity of Moody's stamps. The company was short lived and likely didn't produce a great supply. Also of note, the Great Chicago Fire of 1871 (less than 15 years after the post was active) likely destroyed many of the remainders.

Robert J. Moody and his "city express post" are only listed for one year, 1856, in *Geger & Co's Chicago Directory*, and completely unlisted in other directories of the period.

The listed office location at 30 Dearborn Street was a building that hosted other express and forwarding companies.

MINCE MEAT. MINCE MEAT.
John Lilly & Co., are now ready to furnish families with their superior meat, prepared for baking. Those who are fond of a good mince pie, should not fail to supply themselves, as we feel confident that it has no superior in this market. Orders sent to 27 Desplance street, between Lake and Randolph (W. side) through Moody's Despatch, will receive prompt attention. It will also be for sale at several of the retail groceries in this city.
no 18 6m c252.

ADVERTISEMENT PUBLISHED IN THE
DAILY DEMOCRATIC PRESS, DECEMBER 17, 1856.

MOODY'S PENNY DISPATCH

Due to the rarity of the Moody's stamps, there are many forgeries known.



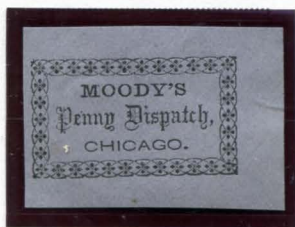
FORGERY A
HUSSEY
1¢ BLACK
ON ORANGE SC
(110L1)



FORGERY A
HUSSEY
1¢ BLACK
ON WHITE
(110L1)



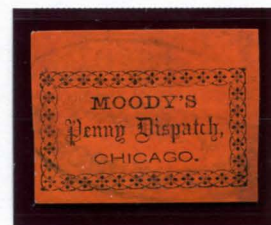
FORGERY A
HUSSEY
1¢ BLACK
ON GRAY
(110L1)



FORGERY A
HUSSEY
1¢ BLACK
ON BLUE GRAY
(110L1)



FORGERY A VAR
HUSSEY
1¢ BLACK
ON ORANGE SC
CHICAGO WITH SERIF
(110L1)

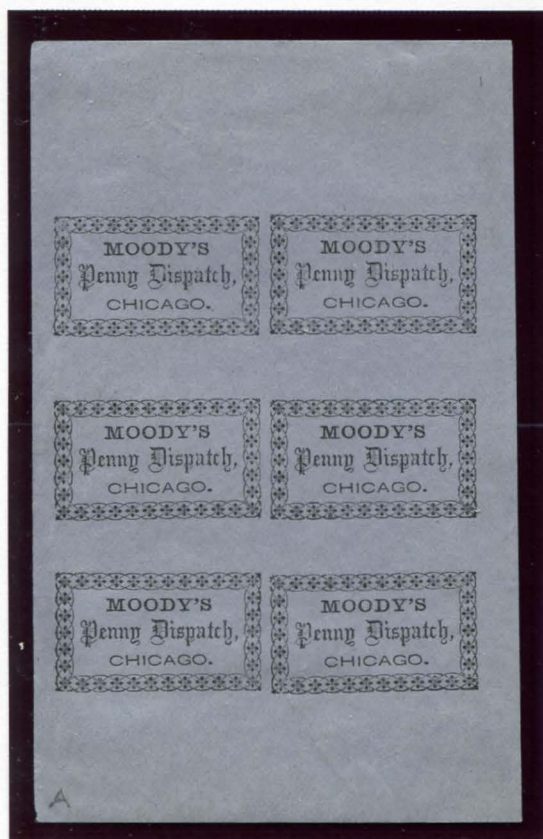


FORGERY A
HUSSEY
1¢ BLACK
ON ORANGE SC
W/ FAKE CANCELLATION
(110L1)



FORGERY A : HUSSEY
1¢ BLACK ON ORANGE SC
FALSELY AFFIXED TO GENUINE COVER

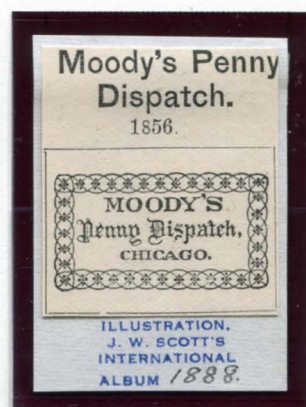
MOODY'S PENNY DISPATCH



FORGERY A : HUSSEY
1¢ BLACK ON GRAY
BLOCK OF SIX
(110L1)



FORGERY B
1¢ BLACK
ON ORANGE SC
(110L1)



FORGERY C
SCOTT ILLUSTRATION
1¢ BLACK
ON ALBUM PAGE
(110L1)



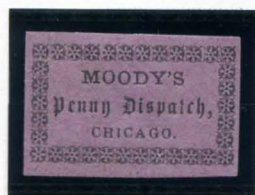
FORGERY D
AFTER MOENS
1¢ BROWN YELLOW
ON WHITE
(110L1)



FORGERY D
AFTER MOENS
1¢ LIGHT BLUE
ON WHITE
(110L1)



FORGERY D
MOENS ILLUSTRATION
1¢ BLACK
ON CATALOG PAGE
(110L1)



FORGERY E
1¢ BLACK ON PURPLE
(110L1)

MOODY'S PENNY DISPATCH

In addition to forgeries created to look like the original Moody's stamps, bogus stamps using the Moody's name on original designs were also produced. Unscrupulous dealers attempted to pass these fakes as genuine stamps from the local post. S. A. Taylor created a majority of these bogus stamps.



BOGUS 1
TAYLOR - FORM AB2
1¢ BLACK
ON YELLOW



BOGUS 1
TAYLOR - FORM AB2
1¢ BLACK
ON PINK



BOGUS 1
TAYLOR - FORM AB2
1¢ BLACK
ON LILAC



BOGUS 1
TAYLOR - FORM AB2
1¢ BLACK
ON BLUE



BOGUS 1
TAYLOR - FORM AB2
1¢ BLACK
ON GREENISH



BOGUS 1
TAYLOR - FORM AB2
1¢ BLACK
ON GOLD



BOGUS 1
TAYLOR
1¢ RED
ON WHITE

Bogus 2 has two varieties, one with a complete left border and one with a break in the middle of the left border



BOGUS 2
TAYLOR - FORM C1
1¢ DULL RED
ON WHITE
BREAK IN LEFT SIDE



BOGUS 2
TAYLOR - FORM C1
1¢ BLACK
ON YELLOW
BREAK IN LEFT SIDE



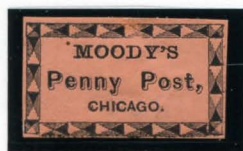
BOGUS 2
TAYLOR - FORM C1
1¢ BLACK
ON GREEN SC
BREAK IN LEFT SIDE



BOGUS 2
TAYLOR - FORM C1
1¢ RED
ON PALE PINK LAID
BREAK IN LEFT SIDE



BOGUS 2
TAYLOR - FORM CC1
1¢ BLACK
ON VERMILION SC
UNBROKEN LEFT SIDE



BOGUS 2
TAYLOR - FORM CC1
1¢ BLACK
ON PEACH SC
UNBROKEN LEFT SIDE



BOGUS 2
TAYLOR - FORM CC1
1¢ BLACK
ON ORANGE BUFF
UNBROKEN LEFT SIDE



BOGUS 2
TAYLOR - FORM CC1
1¢ BLACK
ON BLUE GRAY
UNBROKEN LEFT SIDE

MOODY'S PENNY DISPATCH



BOGUS 3
TAYLOR - FORM M1
1c BLACK
ON WHITE



BOGUS 3
TAYLOR - FORM M1
1c BLACK
ON WHITE LAID



BOGUS 3
TAYLOR - FORM M1
1c BLACK
ON GREEN SC



BOGUS 3
TAYLOR - FORM M1
1c BLACK
ON VERMILION SC



BOGUS 3
TAYLOR - FORM M1
1c BLACK
ON YELLOW SC



BOGUS 3
TAYLOR - FORM M1
1c BLACK
ON GOLD YELLOW SC



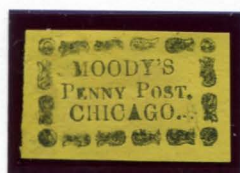
BOGUS 3
TAYLOR - FORM M1
1c BLACK
ON SALMON SC



BOGUS 3
TAYLOR - FORM M1
1c BLACK
ON RASPBERRY SC



BOGUS 4
TAYLOR
1c BLACK
ON ORANGE SC



BOGUS 4
TAYLOR
1c BLACK
ON YELLOW SC

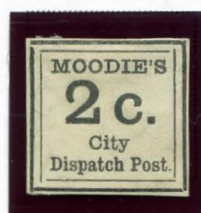


BOGUS 4
TAYLOR
1c BLACK
ON GREEN SC

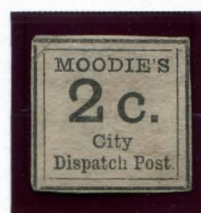


BOGUS 4
TAYLOR
1c BLACK
ON BLUE SC

Bogus 5 is unique among the other Moody's bogus stamps. The post is spelled "Moodie" and the value is 2c instead of a penny. It is the only known Moody's bogus not created by S.A. Taylor.



BOGUS 5
2c BLACK ON
STIFF CREAM



BOGUS 5
2c BLACK ON
DULL GRAY BUFF