

# MOVIE STAMPS

In the 1940s, movie studios were troubled by rules that forbid the illustration or photography of any real postage stamp. William O'Hara, a tax accountant for MGM, suggested that the studio create its own fake stamps to use in close up shots of letters. The design, produced in a variety of colors, was based on the 1912 5¢ Parcel Post stamp. It was first used in the 1946 romantic comedy *A Letter for Evie*.

O'Hara, a stamp collector, sent several copies friends and other collectors. Although he explained the nature of the props, it didn't stop other collectors from trying to mail it in an attempt to get a cancellation. When the Post Office discovered the facsimile being passed as postage, they called the Secret Service to confiscate the remaining stamps and plates from O'Hara and the studios.

Remaining copies of the stamp are considered Cinderella items by stamp collectors, and come in both perforated and imperforated varieties.



COPY OF FILM POSTER  
A LETTER FOR EVIE



BOGUS  
3¢ RED ( SHADE )  
ON WHITE  
IMPERFORATE



BOGUS  
3¢ BLUE ( SHADE )  
ON WHITE  
IMPERFORATE



BOGUS  
3¢ GREEN ( SHADE )  
ON WHITE  
IMPERFORATE



# MOVIE STAMPS



BOGUS  
3¢ RED ( SHADE )  
ON WHITE  
IMPERFORATE



BOGUS  
3¢ BLUE ( SHADE )  
ON WHITE  
IMPERFORATE



BOGUS  
3¢ GREEN ( SHADE )  
ON WHITE  
IMPERFORATE



BOGUS  
3¢ RED ( SHADE )  
ON WHITE  
PERFORATED



BOGUS  
3¢ BLUE ( SHADE )  
ON WHITE  
PERFORATED



BOGUS  
3¢ BLUE ( SHADE )  
ON WHITE  
PERFORATED



BOGUS  
3¢ GREEN ( SHADE )  
ON WHITE  
PERFORATED



BOGUS  
3¢ BRIGHT RED ( SHADE )  
ON WHITE  
IMPERFORATE  
CANCELLED  
BLUE NEW YORK CDS



BOGUS  
3¢ BRIGHT RED ( SHADE )  
ON WHITE  
IMPERFORATE  
CANCELLED  
BLACK WAVY LINES



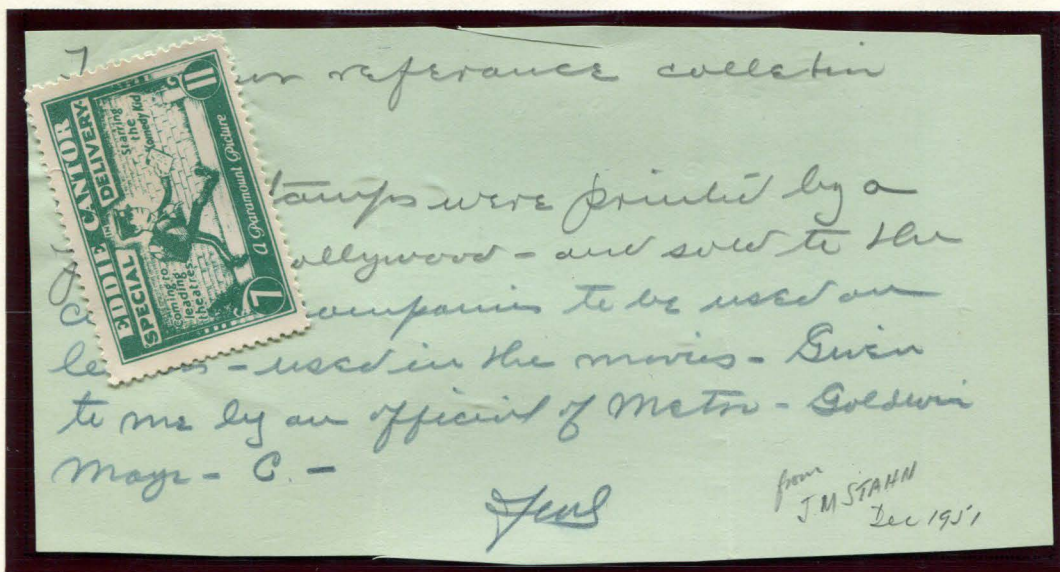
BOGUS  
3¢ LIGHT BLUE ( SHADE )  
ON WHITE  
IMPERFORATE  
CANCELLED  
BLUE WAVY LINES



# MOVIE STAMPS

The stamp below is affixed to a note from stamp collector J. M. Stahn. The stamp is affixed such that it obscures some of the text of the note, an approximate transcription of which follows:

"F... reference collection / .... stamps were printed by a .... Hollywood - and sent to the ... companies to be used on letters used in the movies - Given to me by an official of Metro-Goldwyn-Mayer - C. -"



BOGUS  
7¢ / 11¢ GREEN ON WHITE  
PERFORATED  
AFFIXED TO PIECE

The stamp features a caricature of actor Eddie Cantor dressed as a mailman for his role in the 1927 silent movie *Special Delivery*. In the movie, Eddie plays a cop going undercover as a mailman.

The stamp design appears to be based on the 1922 issue of US Special Delivery stamps.

Text in the stamp reads "Eddie Cantor in Special Delivery", "Coming to leading theatres", "Starring the Comedy Kid", and "A Paramount Picture".

PROMOTIONAL PHOTO OF EDDIE CANTOR  
FOR THE MOVIE *SPECIAL DELIVERY*

