

# NEW HAVEN AND N. Y. EXP. POST

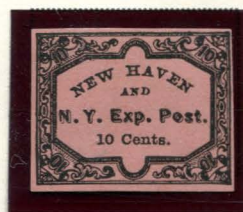
Supposedly operating between New York City, N.Y. and New Haven, Connecticut, this bogus was first reported in November of 1865. It was made by S. Allan Taylor, and quickly known for the fraud it is.



BOGUS 1  
TAYLOR - FORM 1  
10¢ BLACK  
ON PALE PINK H. LAID



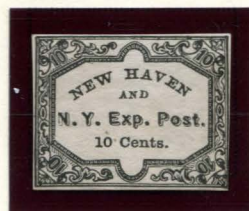
BOGUS 1  
TAYLOR - FORM 1  
10¢ BLACK  
ON GREENISH V. LAID



BOGUS 1  
TAYLOR - FORM 1  
10¢ BLACK  
ON SALMON



BOGUS 1  
TAYLOR - FORM 1  
10¢ BLACK  
ON BLUISH



BOGUS 1  
TAYLOR - FORM 1  
10¢ BLACK  
ON WHITE WMK



BOGUS 1  
TAYLOR - FORM AA13  
10¢ RED VIOLET  
ON WHITE



BOGUS 1  
TAYLOR - FORM AA13  
10¢ RED VIOLET  
ON SALMON



BOGUS 1  
TAYLOR - FORM AA13  
10¢ RED VIOLET  
ON YELLOW



BOGUS 1  
TAYLOR - FORM AA13  
10¢ RED VIOLET  
ON YELLOW H LAID



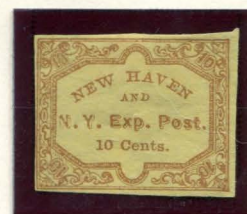
BOGUS 1  
TAYLOR - FORM AA21  
10¢ BLACK  
ON PEACH



BOGUS 1  
TAYLOR - FORM AA21  
10¢ BLACK  
ON PALE ORANGE



BOGUS 1  
TAYLOR - FORM AA21  
10¢ BLACK  
ON PURPLE



BOGUS 1  
TAYLOR - FORM AB3  
10¢ LIGHT BROWN  
ON PALE YELLOW

# NEW HAVEN AND N. Y. EXP. POST



BOGUS 1  
TAYLOR  
10¢ BLACK  
ON RED ORANGE SC



BOGUS 1  
TAYLOR  
10¢ RED  
ON CREAM



BOGUS 1  
TAYLOR  
10¢ RED  
ON PALE PINK



BOGUS 1  
TAYLOR  
10¢ RED  
ON PALE PINK H LAID

The "New Haven and N.Y. Exp. Post" stamps known as "Bogus 2" are a variation of the first bogus stamp, with plate wear showing. Most notably is the missing top-left serif on the "N" of "NEW".

On some of these stamps, to the right side, you can see parts of the "Moody's City Dispatch" bogus Taylor made. All these stamps belong to form AB2, which has both stamps in it.



BOGUS 2  
TAYLOR - FORM AB2  
10¢ BLACK  
ON PINK



BOGUS 2  
TAYLOR - FORM AB2  
10¢ BLACK  
ON LILAC



BOGUS 2  
TAYLOR - FORM AB2  
10¢ BLACK  
ON BLUE



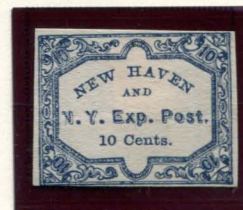
BOGUS 2  
TAYLOR - FORM AB2  
10¢ BLACK  
ON GREENISH



BOGUS 2  
TAYLOR  
10¢ BLACK  
ON CREAM



BOGUS 2  
TAYLOR  
10¢ RED  
ON CREAM



BOGUS 2  
TAYLOR  
10¢ BLUE  
ON CREAM H LAID