

THE
MIKE FARRELL
COLLECTION
OF PRIVATE US MAIL SERVICES
INCLUDING THE HISTORY, FORGERIES, & FANTASIES OF
UNITED STATES LOCAL POSTS, CARRIERS,
INDEPENDENT MAIL ROUTES, & EXPRESS CO.S

PENNY EXPRESS COMPANY



The information and identification within these selections is the individual work of the Farrell Collection. It is always recommended to consult multiple sources for additional information or opinions. Local post histories and descriptions are based on information available at the time of writing.

Descriptions in the Farrell Collection were written based on personal research and sources including, but not limited to: Articles in the Carriers and Locals Society's *The Penny Post*; Amos Media's *Scott Catalogue*; Patton's *The Private Local Post of the United States*; Springer's *Handbook of North American Cinderella Stamps*; Lyons' *Identifier for Carriers, Locals, Fakes Forgeries and Bogus Posts of the United States*; articles in the USPS's *The Chronicle*; Mosher's *Catalog of Private Express Labels and Stamps*; The Eastern Independent Mail Company Study Group's *Eastern Independent Mail Companies and Express Mail Companies 1840-1845*; the United Postal Stationery Society's *The Western Express Companies 1850-1890 A Catalog of Their Franks and Hand Stamps*; Elliot Perry's *Pat Paragraphs*; James N. Drummond's *Catalog of Philatelic Miscellany*; auction lot descriptions from Seigel Auction Galleries, Kelleher Auctions, H.R. Harmer, and Schuyler Rumsey Philatelic Auctions; in-period directories and newspaper archives; and the notes of George Sloane and Gordon Stimmell.

Colors listed for stamps and forgeries are the opinions of the Farrell Collection based on viewing physical copies of the pieces under consistent lighting. Colors in the .pdfs may be slightly inaccurate due to manipulations from the scanning process, computer monitor settings, or (in event that the files are printed for offline viewing) the printing process.

Unless otherwise noted, stamps are identified by their Scott Catalogue numbers and forgeries are identified by their Lyons Identifier type. Express labels and forgeries are identified by their Mosher's Catalog numbers. Western express franks are identified by their listing in the United States Postal Stationery Society catalog. Scott numbers in parenthesis under listed forgeries represent approximately what stamp the forgery is attempting to imitate.

Copyright Amos Media Company - 2022

The Scott Numbers are the copyrighted property of Amos Media Company, and are used here under a licensing agreement with Amos. The marks Scott and Scott's are Registered in the U.S. Patent and Trademark Office, and are trademarks of Amos Media Company. No use may be made of these marks or of material in this publication, which is reprinted from a copyrighted publication of Amos Media Company., without the express written permission of Amos Media Company, Sidney, Ohio 45365.

PENNY EXPRESS COMPANY

This independent mail company operated in California for a brief period in 1855. The company was established by Henry Reed, formerly an agent for the Adam's & Co. California office. Reed was the proprietor of San Francisco's first local post, Reed's City Despatch Post, which ran from 1853-1854.

After Adam's & Co. California went bankrupt, Reed attempted to start a new letter carrying service that would operate between San Francisco, Sacramento, Maryville, Benicia, San Jose, and Santa Clara. An 1855 newspaper article advertises that the rate of postage was five cents per letter, and that the company hoped to expand its lines into Oregon.

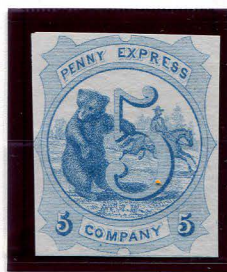
A NEW EXPRESS.—We learn that a new Express will be started to-day, to carry letters from San Francisco to Sacramento, Marysville, Benicia, San Jose and Santa Clara, at the reduced rate of five cents per letter, and, as soon as arrangements are completed, to other parts of the State and Oregon at corresponding low rates. The name of the new Express is the "Penny Express Company," and will be under the superintendence of Mr. Henry Reed, a gentleman well known to the business men of this city, as being for several years connected with Adams & Co's Express.

ARTICLE AS PUBLISHED IN THE
DAILY ALTA CALIFORNIA - JUNE 25, 1855

Stamps for the express were printed, but none are known used. This is probably because only a few months later it was reported that Reed, still entangled in lawsuits from the failed Adam's & Co. California venture, was reported to have fled the city, returning to the East Coast. It is likely the post did not carry mail at all.



114L1
GENUINE
5¢ BLACK
ON WHITE



114L2
GENUINE
5¢ BLUE
ON WHITE



114L3
GENUINE
5¢ RED
ON WHITE

These stamps were printed in three colors: black, blue, and red. Of these, the black is the most scarce, and was the only one issued with gum. Stamps were printed in sheets of 32. The following pages feature full sheets of both the blue (114L2) and red (114L3) stamps.





PENNY EXPRESS CO.

The Penny Express Co. counterfeit known as "Forgery A" was printed by S. Allan Taylor.



FORGERY A
TAYLOR - FORM 11
5c BLUE
ON WHITE
(114L2)



FORGERY A
TAYLOR - FORM 11
5c BLUE
ON PINK H. LAID
(114L2)



FORGERY A
TAYLOR - FORM 17
5c BLACK
ON WHITE
(114L1)



FORGERY A
TAYLOR - FORM 17
5c BLACK
ON CREAM
(114L1)

Forgery B can also be attributed to Taylor. A partial offset print of the design can be found along with other Taylor fakes on the reverse of a Swift & Co. Express forgery.



PHOTOCOPY OF SWIFT & CO. EXPRESS FORGERY
TAYLOR FORGERY WITH OFFSET FORGERIES ON REVERSE
BERFORD & CO. 3c FORGERY B | BROWN & MCGILL FORGERY C
PENNY EXPRESS FORGERY B



FORGERY B
TAYLOR - FORM AB7
5c BLACK
ON WHITE
(114L1)



FORGERY B
TAYLOR
5c BLACK
ON BUFF
(114L1)



FORGERY B
TAYLOR
5c BLUE
ON YELLOW
(114L2)



FORGERY B
TAYLOR
5c BLUE
ON WHITE
(114L2)



FORGERY B
TAYLOR
5c DARK BLUE
ON WHITE LAID
(114L2)

PENNY EXPRESS CO.

It is unknown who printed the following forgeries.



FORGERY D
5¢ BLACK
ON WHITE
(114L1)



FORGERY D
5¢ INTENSE BLACK
ON WHITE
(114L1)



FORGERY D1
5¢ BLACK
ON WHITE
(114L1)