

THE
MIKE FARRELL
❧ COLLECTION ❧
OF INDEPENDENT MAILS

INCLUDING THE HISTORY, FORGERIES, & FANTASIES OF
UNITED STATES, LOCAL POSTS, CARRIERS,
INDEPENDENT MAIL ROUTES, & EXPRESS CO.S

T. WALTER'S CITY DESPATCH

The information and identification within these selections is the individual work of the Farrell Collection. It is always recommended to consult multiple sources for additional information or opinions. Local post company descriptions are based on information available at the time of writing. Descriptions in the Farrell Collection were written based on personal research and sources including, but not limited to: Articles in the Carriers and Locals Society's The Penny Post; Amos Media's Scott Catalogue; Patton's The Private Local Post of the United States; Springer's Handbook of North American Cinderella Stamps; Lyons' Identifier for Carriers, Locals, Fakes Forgeries and Bogus Posts of the United States; articles in the USPCS's The Chronicle; Mosher's Catalog of Private Express Labels and Stamps; The Eastern Independent Mail Company Study Group's Eastern Independent Mail Companies and Express Mail Companies 1840-1845; Elliot Perry's Pat Paragraphs; James N. Drummond's Catalog of Philatelic Miscellany; and the notes of George Sloane and Gordon Stimmell.

Colors listed for stamps and forgeries are the opinions of the Farrell Collection based on viewing physical copies of the pieces under consistent lighting. Colors in the .pdfs may be slightly inaccurate due to manipulations from the scanning process, computer monitor settings, or (in event that the files are printed for offline viewing) the printing process.

Unless otherwise noted, stamps are identified by their Scott Catalogue numbers and forgeries are identified by their Lyons Identifier type. Scott numbers in parenthesis under listed forgeries represent approximately what stamp the forgery is attempting to imitate.

Copyright Amos Media Company - 2020

The Scott Numbers are the copyrighted property of Amos Media Company, and are used here under a licensing agreement with Amos. The marks Scott and Scott's are Registered in the U.S. Patent and Trademark Office, and are trademarks of Amos Media Company. No use may be made of these marks or of material in this publication, which is reprinted from a copyrighted publication of Amos Media Company., without the express written permission of Amos Media Company, Sidney, Ohio 45365.

T. WALTER'S CITY DESPATCH

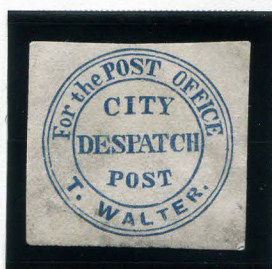
Not much is known about T. Walter's City Despatch, which is believed to have been a genuine post. The circular design of the stamp is very similar to other Philadelphia stamps from the 1840s-1850s, as popularized by the D.O. Blood & Co. City Despatch Post stamps issued in the mid 1840s (Scott 15L7 - 15L9).

Examples of genuine T. Walter's City Despatch stamps are very rare. One of the two recorded examples is on piece with a handstamp for the Telegraph City Despatch. It is possible the two Philadelphia locals were related.

The genuine stamps read "DESPATCH" in sans serif font; unlike the more common forgeries in which "DESPATCH" is serified. The forgeries were printed by S. Allan Taylor, who used the same design for his T. Davis bogus stamps.



FORGERY A
TAYLOR - FORM AB6
BLUE ON
YELLOWISH LAID



FORGERY A
TAYLOR - FORM AB6
BLUE ON
WHITE



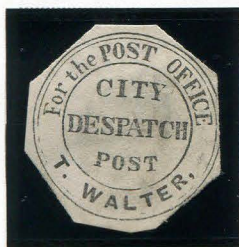
FORGERY A
TAYLOR - FORM AB6
BLUE ON
OFF-WHITE



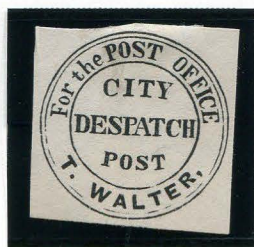
FORGERY A
TAYLOR
LIGHT BLUE ON CREAM



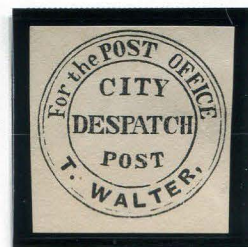
FORGERY A
TAYLOR
DARK BLUE ON OFF-WHITE



FORGERY A
TAYLOR
GRAY ON WHITE



FORGERY A
TAYLOR
BLACK ON WHITE



FORGERY A
TAYLOR
BLACK ON OFF-WHITE

T. WALTER'S CITY DESPATCH

On Forgery A, the text "T. WALTER" is printed in a bold, sans serif font. In Forgeries B and C, "T. Walter" is printed in a serif font. In Forgery B, the font is bold and the text curves along with the circle. In Forgery C, the font is thinner and the letters are arranged haphazardly, with the "L" raised up, and "TER" in a straight diagonal line (rather than curving along with the circle.)



FORGERY B
TAYLOR
LIGHT BLUE
ON WHITE



FORGERY B
TAYLOR
BLUE
ON DULL PURPLE



FORGERY A
TAYLOR
FORM AB18
BLACK ON
WHITE



FORGERY A
TAYLOR
FORM AB18
BLACK ON
OFF-WHITE



FORGERY A
TAYLOR
FORM AB18
BLACK ON
BLUE