

THE
MIKE FARRELL
COLLECTION
OF INDEPENDENT MAILS

INCLUDING THE HISTORY, FORGERIES, & FANTASIES OF
UNITED STATES, LOCAL POSTS, CARRIERS,
INDEPENDENT MAIL ROUTES, & EXPRESS CO.S

UNION SQUARE POST OFFICE

The information and identification within these selections is the individual work of the Farrell Collection. It is always recommended to consult multiple sources for additional information or opinions. Local post company descriptions are based on information available at the time of writing. Descriptions in the Farrell Collection were written based on personal research and sources including, but not limited to: Articles in the Carriers and Locals Society's The Penny Post; Amos Media's Scott Catalogue; Patton's The Private Local Post of the United States; Springer's Handbook of North American Cinderella Stamps; Lyons' Identifier for Carriers, Locals, Fakes Forgeries and Bogus Posts of the United States; articles in the USPCS's The Chronicle; Mosher's Catalog of Private Express Labels and Stamps; The Eastern Independent Mail Company Study Group's Eastern Independent Mail Companies and Express Mail Companies 1840-1845; Elliot Perry's Pat Paragraphs; James N. Drummond's Catalog of Philatelic Miscellany; and the notes of George Sloane and Gordon Stimmell.

Colors listed for stamps and forgeries are the opinions of the Farrell Collection based on viewing physical copies of the pieces under consistent lighting. Colors in the .pdfs may be slightly inaccurate due to manipulations from the scanning process, computer monitor settings, or (in event that the files are printed for offline viewing) the printing process.

Unless otherwise noted, stamps are identified by their Scott Catalogue numbers and forgeries are identified by their Lyons Identifier type. Scott numbers in parenthesis under listed forgeries represent approximately what stamp the forgery is attempting to imitate.

Copyright Amos Media Company - 2020

The Scott Numbers are the copyrighted property of Amos Media Company, and are used here under a licensing agreement with Amos. The marks Scott and Scott's are Registered in the U.S. Patent and Trademark Office, and are trademarks of Amos Media Company. No use may be made of these marks or of material in this publication, which is reprinted from a copyrighted publication of Amos Media Company., without the express written permission of Amos Media Company, Sidney, Ohio 45365.

UNION SQUARE POST OFFICE

Around 1850, Joseph E. Dunham purchased the Messenkope's Post Office and took over the New York local as the Union Square Post Office. The post was located just under Union Square at 64 or 62 East 14th street. Around 1855, Dunham sold the post of Phineas C. Godfrey who operated it until around 1856.

The post issued a stamp with a shield design in 1¢ and 2¢ denominations. 1¢ stamps carried mail to the US Post Office for further delivery, and were printed on dark or apple green paper.



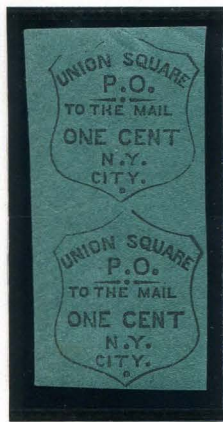
141L1
GENUINE
1¢ BLACK ON
DARK GREEN



141L1
GENUINE
1¢ BLACK ON
DARK GREEN
CDS CANCEL



141L1
GENUINE
1¢ BLACK ON
DARK GREEN
CIRCLE OF V CANCEL



141L1
GENUINE
1¢ BLACK ON
DARK GREEN
VERTICAL PAIR



141L1
GENUINE
1¢ BLACK ON
DARK GREEN
BLOCK OF TEN



141L2
GENUINE
1¢ BLACK ON
APPLE GREEN
CUT TO SHAPE



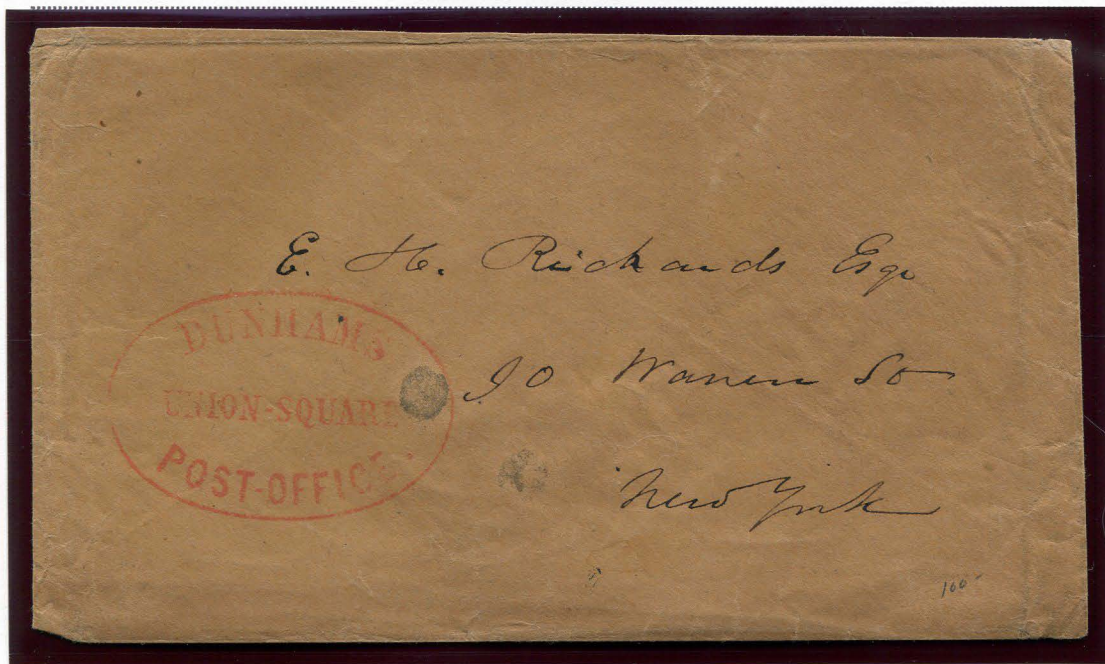
141L2
GENUINE
1¢ BLACK ON
APPLE GREEN
CDS CANCEL



141L2
GENUINE
1¢ BLACK ON
APPLE GREEN
CTS - CDS CANCEL

UNION SQUARE POST OFFICE

The Union Square Post Office also used a large, red oval handstamp that reads "DUNHAMS / UNION-SQUARE / POST-OFFICE."



DUNHAMS UNION-SQUARE POST-OFFICE OVAL HANDSTAMP



DUNHAMS UNION-SQUARE POST-OFFICE OVAL HANDSTAMP
RED, CURVED "PAID" HANDSTAMP
ON SMALL MOURNING COVER

UNION SQUARE POST OFFICE



141L2 : GENUINE : 1¢ BLACK ON APPLE GREEN
CUT TO SHAPE - MANUSCRIPT CANCEL
BLACK NEW YORK 5¢ CDS HANDSTAMP
AUGUST 24 (CIRCA 1851)

The cover above was mailed around 1851, when the US postage rate for letters carried under 3000 miles was 3¢ when postage was prepaid; and 5¢ when paid collect.

The letter was carried by the Union Square Post Office to the US Post Office, where it was passed onto the government service. Because no US stamp was affixed, the US Post Office applied the New York 5cts. handstamp before carrying the letter out of the city to New London.

UNION SQUARE POST OFFICE



141L2 : 1¢ BLACK ON APPLE GREEN
GENUINE ON COVER, TIED BY
BLACK NEW YORK 5¢ CDS HANDSTAMP
APRIL 6 (CIRCA 1851)



141L2 : 1¢ BLACK ON APPLE GREEN
GENUINE ON COVER FRONT, TIED BY
BLACK NEW YORK 5¢ CDS HANDSTAMP
JANUARY 25 (CIRCA 1851)

UNION SQUARE POST OFFICE

From 1851 to 1863, letters carried less than 3000 miles were charged a rate of 3¢ when prepaid with US postage stamps. The covers featured here include both the 1¢ Union Square PO stamps paying their delivery to the US Post Office, and 3¢ US stamps prepaying their final delivery by the US Post Office.

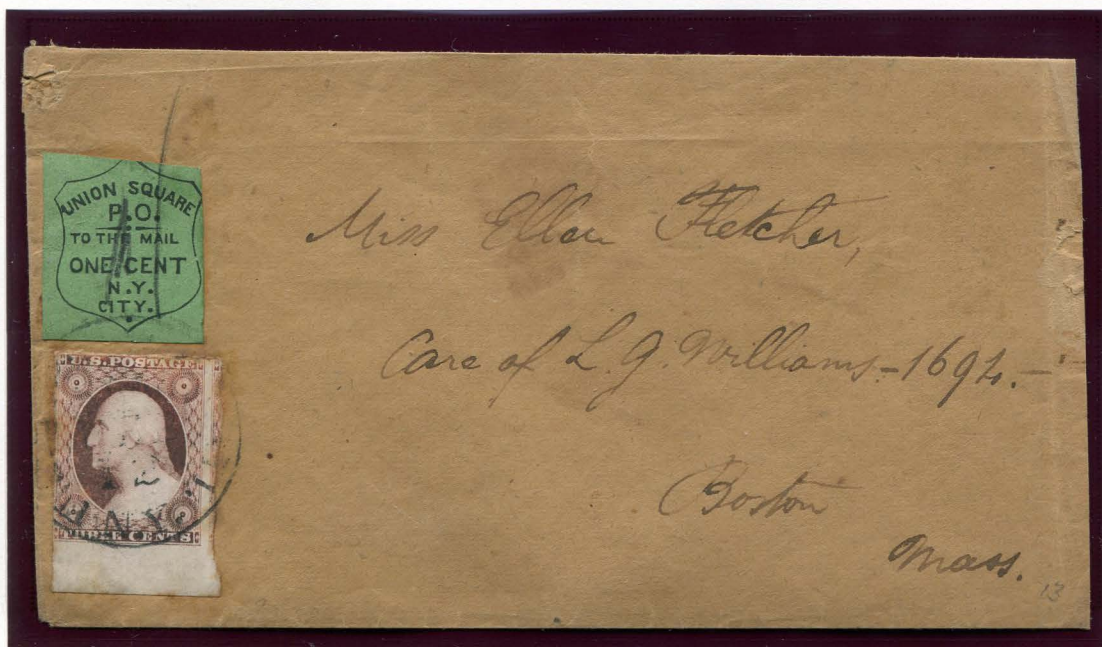


141L2 : 1¢ BLACK ON APPLE GREEN
GENUINE ON COVER CANCELLED BY MANUSCRIPT CANCEL
11A : 3¢ DULL RED
BLACK NEW YORK CDS HANDSTAMP - MARCH 20

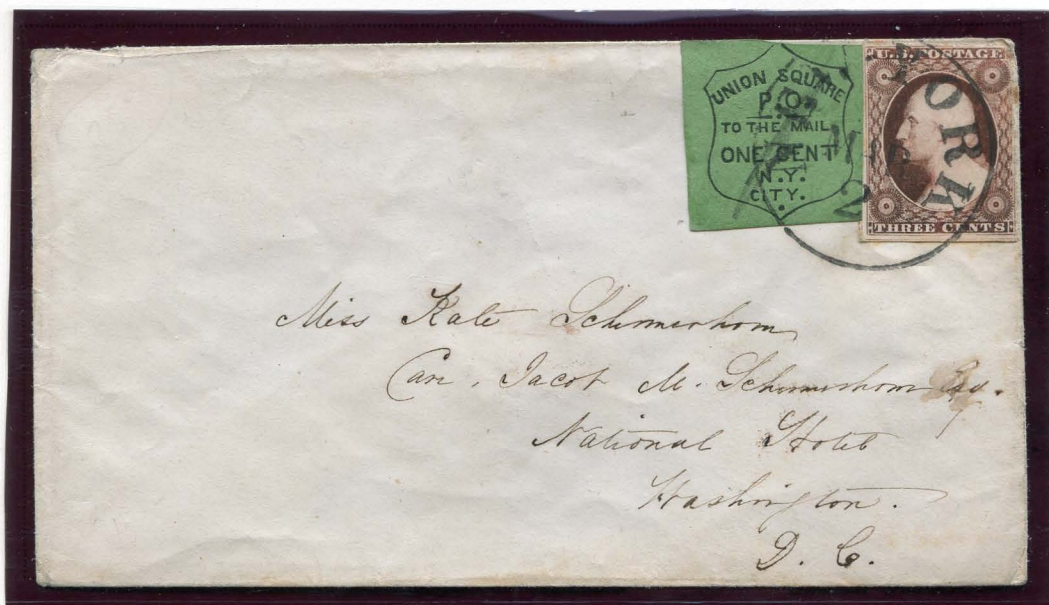


141L2 : 1¢ BLACK ON APPLE GREEN
GENUINE ON COVER TIED BY MANUSCRIPT CANCEL
11A : 3¢ DULL RED
BLACK NEW YORK CDS HANDSTAMP - MARCH 21

UNION SQUARE POST OFFICE



141L2 : 1¢ BLACK ON APPLE GREEN
GENUINE ON COVER TIED BY MANUSCRIPT & CDS HANDSTAMP CANCEL
11A : 3¢ DULL RED
BLACK NEW YORK CDS HANDSTAMP - FEBRUARY 12



141L2 : 1¢ BLACK ON APPLE GREEN
GENUINE ON COVER TIED BY NEW YORK CDS HANDSTAMP
11A : 3¢ DULL RED
BLACK NEW YORK CDS HANDSTAMP - MARCH 2

UNION SQUARE POST OFFICE



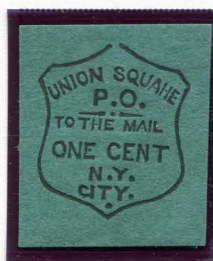
141L2 (x2) : GENUINE
1¢ BLACK ON APPLE GREEN - MANUSCRIPT PENCIL CANCEL
DUNHAMS UNION-SQUARE POST-OFFICE OVAL HANDSTAMP

The cover above was delivered locally by the Union Square PO, but is paid with two 1¢ "to the mail" stamps rather than a single "city dispatch" stamp. This cover is also marked with a Dunham's Union Square Post Office handstamp.

The envelope is addressed to Horation Allen, a Vice President of the Association for Improving the Condition of the Poor.

UNION SQUARE POST OFFICE

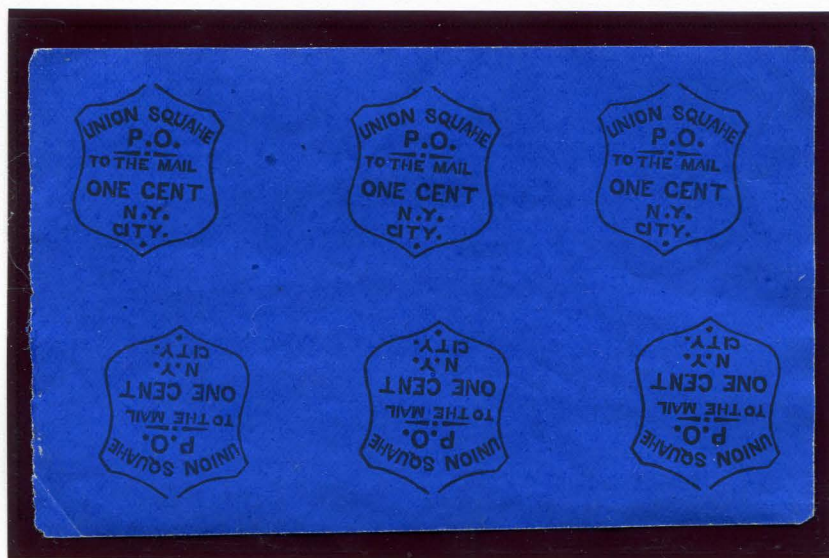
Several forgeries of the Union Square PO 1¢ "To The Mail" stamps are known. Forgery A, shown below, is easily identified by the word "SQUAHE" - which is printed with an "H" in place of an "R".



FORGERY A
1¢ BLACK ON
DARK GREEN
(141L1)



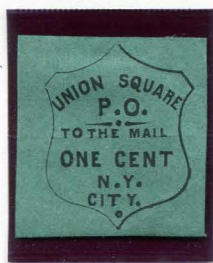
FORGERY A
1¢ BLACK ON
BRIGHT DEEP BLUE SC
(141L1)



FORGERY A
1¢ BLACK ON BRIGHT DEEP BLUE SC
BLOCK OF SIX - TÊTE-BÊCHE

UNION SQUARE POST OFFICE

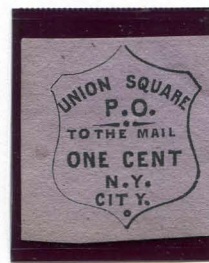
The 1¢ Forgery B is identified by a small break in the shield border above the "U" in "UNION"; and the tail of the "Q" in "SQUARE", which hangs low.



FORGERY B
1¢ BLACK ON
DARK GREEN
(141L1)



FORGERY B
1¢ BLACK ON
DULL RED
(141L1)



FORGERY B
1¢ BLACK ON
VIOLET GRAY
(141L1)



FORGERY B
1¢ BLACK ON
BRIGHT GREEN SC
(141L1)

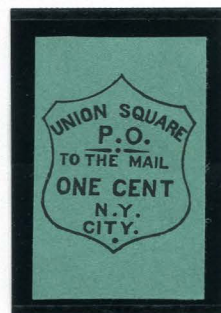


FORGERY B
1¢ BLACK ON
ORANGE SC
(141L1)

Forgery C was printed by J.W. Scott, and is based on the illustration used by Scott for his company's stamp catalogues and albums.



FORGERY C
SCOTT
1¢ BLACK ON
DARK GREEN
(141L1)



FORGERY C
SCOTT
1¢ BLACK ON
DARKISH GREEN
(141L1)

UNION SQUARE POST OFFICE

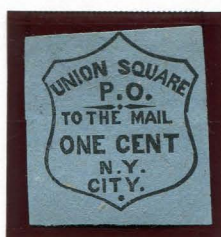
Forgery D was printed by S. A. Taylor. This forgery has an unbroken shield border, similar to forgery C, but has slightly larger, bolder font.



FORGERY D
TAYLOR - FORM 13
1¢ BLACK ON
SCARLET SC
(141L1)



FORGERY D
TAYLOR - FORM 13
1¢ BLACK ON
YELLOW SC
(141L1)



FORGERY D
TAYLOR
1¢ BLACK ON
GREEN
(141L1)



FORGERY D
TAYLOR
1¢ BLACK ON
OLIVE GREEN
(141L1)



FORGERY D
TAYLOR
1¢ BLACK ON
BLUE
(141L1)

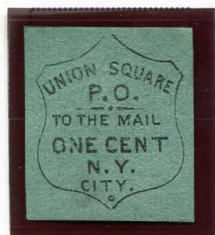
Forgery F is typographed on thin, yellowish green paper.



FORGERY F
1¢ BLACK ON
YELLOWISH GREEN
(141L2)

UNION SQUARE POST OFFICE

Forgery G is based on the illustration used in JB Moens stamp catalogues after 1864.



FORGERY G
1¢ BLACK ON
DARK GREEN
(141L1)



FORGERY G
1¢ BLACK ON
LIGHT GREEN
(141L2)

UNION SQUARE POST OFFICE

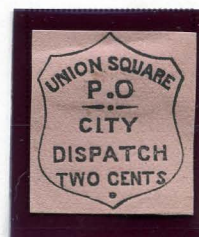
2¢ stamps paid for direct delivery within the city. These stamps were printed on rose colored paper. Many examples of genuine stamps have faded to other shades over time.



141L3
GENUINE
2¢ BLACK ON
ROSE (SHADE)



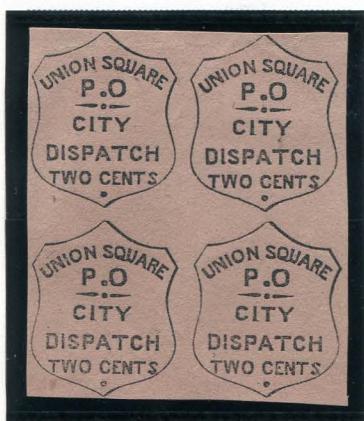
141L3
GENUINE
2¢ BLACK ON
ROSE (SHADE)



141L3
GENUINE
2¢ BLACK ON
ROSE (SHADE)



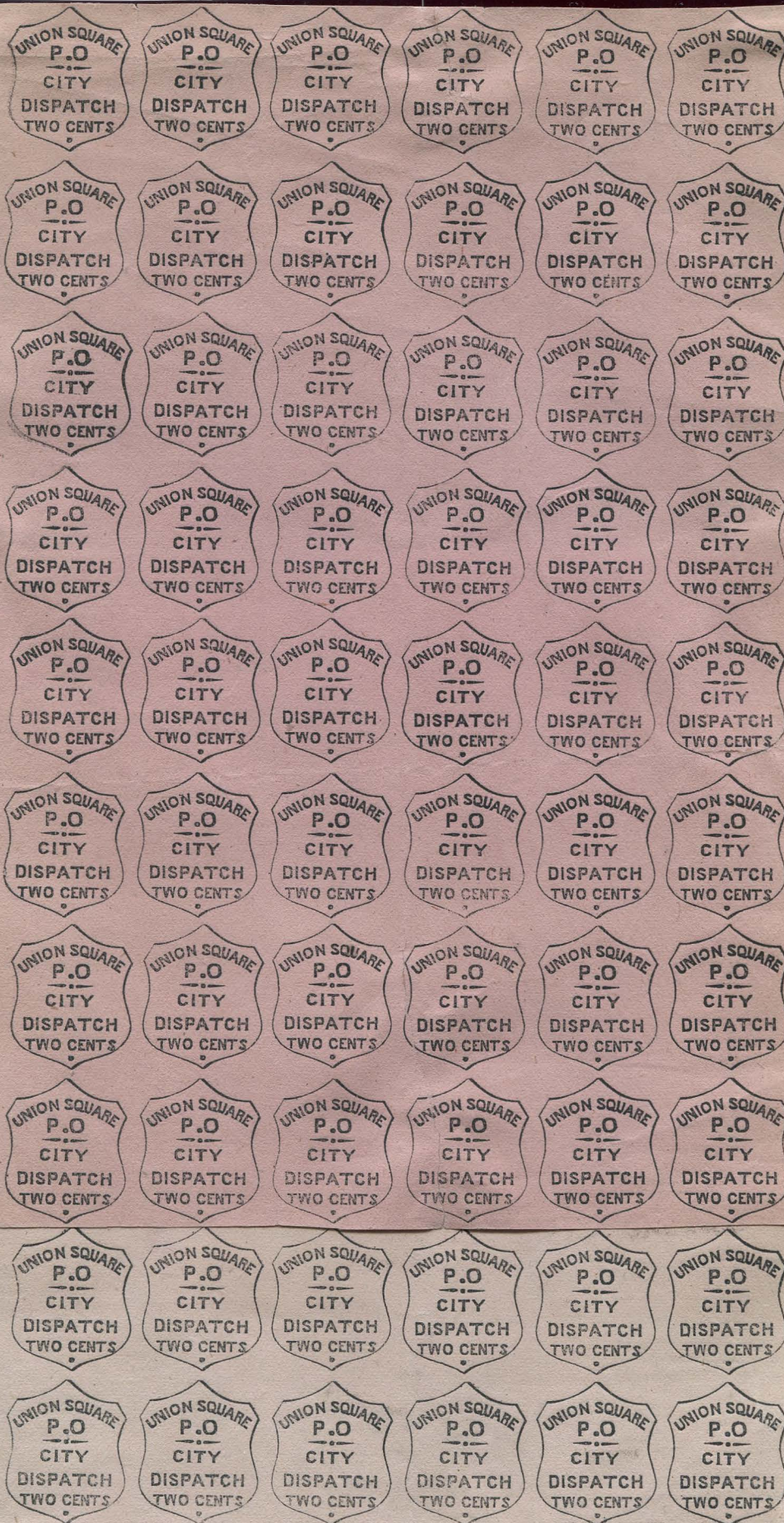
141L3 : GENUINE
2¢ BLACK ON ROSE (SHADE)
HORIZONTAL STRIP OF FOUR



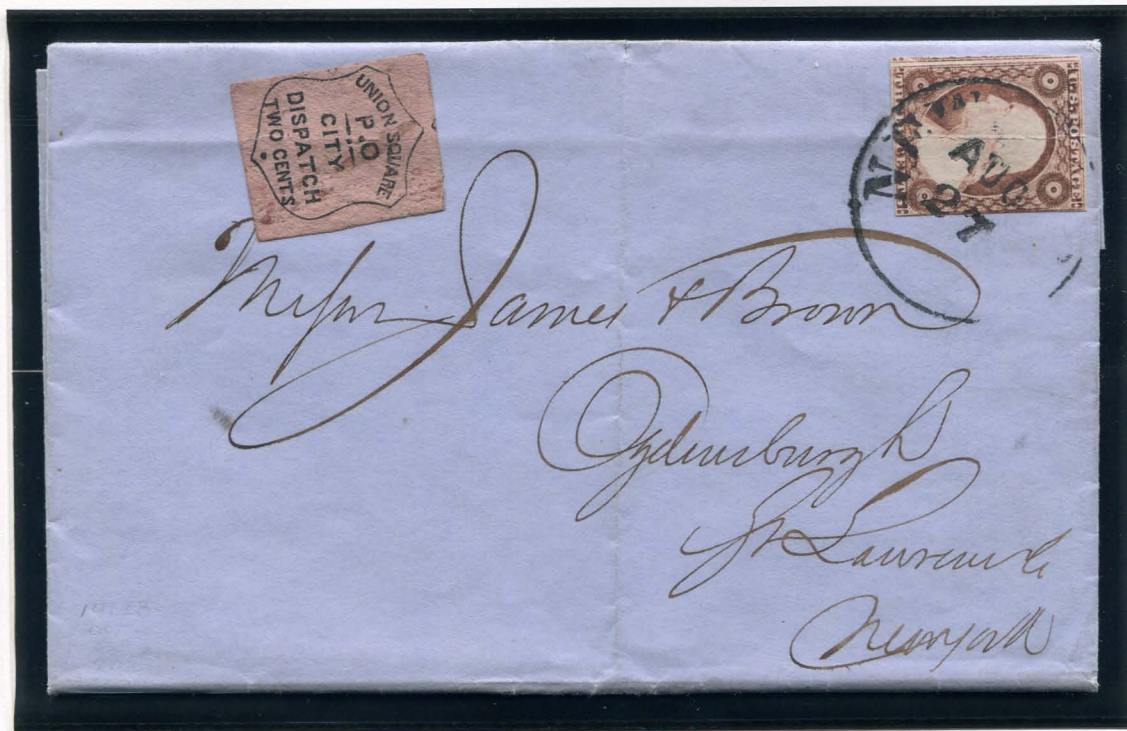
141L3
GENUINE
2¢ BLACK ON
ROSE (SHADE)
BLOCK OF FOUR

The 2¢ City Delivery stamps were printed in sheets of 120 subjects.

On the following page is a reconstructed half sheet of 60 subjects, arranged in ten rows of six stamps.



UNION SQUARE POST OFFICE



141L3 : 2¢ BLACK ON ROSE (SHADE)
GENUINE ON COVER WITH
11A : 3¢ DULL RED
NEW YORK CDS HANDSTAMP CANCEL
AUGUST 27 (1853)

Although the cover above was carried to the US Post Office, it is paid with a 2¢ "City Dispatch" stamp rather than the cheaper 1¢ "To the Mail" stamp.

From the US Post Office, it was carried out of the city, prepaid with a 3¢ US stamp.

UNION SQUARE POST OFFICE

There are more different forgeries of the 2¢ "City Dispatch" stamps than the 1¢.



FORGERY A
2¢ BLACK ON
ROSE (SHADE)
(141L3)



FORGERY A
2¢ BLACK ON
ROSE (SHADE)
(141L3)

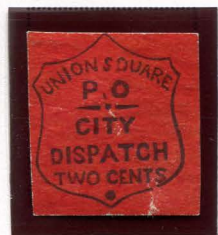


FORGERY A
2¢ BLACK ON
ROSE (SHADE) LAID
(141L3)

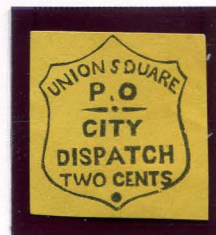


FORGERY A
2¢ BLACK ON
ROSE (SHADE) LAID
(141L3)

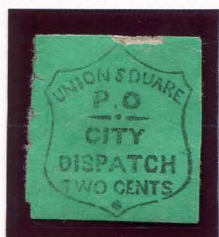
The 2¢ Forgery B was printed by S. A. Taylor. Taylor used the die in several forms. The die appears to have been damaged during its use in form 19, evidenced by a pattern of faults that appear on some of the examples.



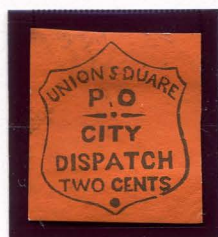
FORGERY B
TAYLOR - FORM 13
2¢ BLACK ON
SCARLET SC
(141L3)



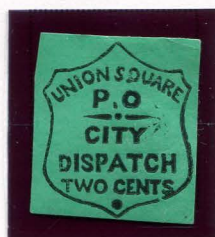
FORGERY B
TAYLOR - FORM 13
2¢ BLACK ON
YELLOW SC
(141L3)



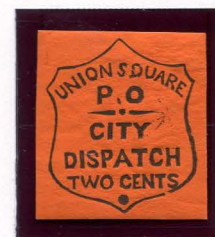
FORGERY B
TAYLOR - FORM 19
2¢ BLACK ON
GREEN SC
NO FAULTS
(141L3)



FORGERY B
TAYLOR - FORM 19
2¢ BLACK ON
VERMILION SC
NO FAULTS
(141L3)

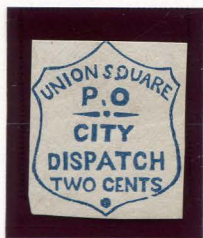


FORGERY B
TAYLOR - FORM 19
2¢ BLACK ON
GREEN SC
WITH FAULTS
(141L3)



FORGERY B
TAYLOR - FORM 19
2¢ BLACK ON
VERMILION SC
WITH FAULTS
(141L3)

UNION SQUARE POST OFFICE



FORGERY B
TAYLOR - FORM AA1
2¢ DULL BLUE
ON WHITE
(141L3)



FORGERY B
TAYLOR - FORM AA1
2¢ DULL GREEN
ON WHITE
(141L3)



FORGERY B
TAYLOR - FORM AA1
2¢ RED
ON WHITE
(141L3)



FORGERY B
TAYLOR - FORM AA1
2¢ DULL RED
ON WHITE
(141L3)



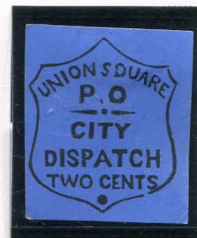
FORGERY B
TAYLOR - FORM AA1
2¢ MAROON
ON WHITE
(141L3)



FORGERY B
TAYLOR - FORM AA1
2¢ BROWN
ON WHITE
(141L3)



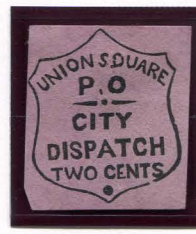
FORGERY B
TAYLOR - FORM AA1
2¢ DULL VIOLET BROWN
ON WHITE
(141L3)



FORGERY B
TAYLOR - FORM AA1
2¢ BLACK
ON ROYAL BLUE SC
(141L3)

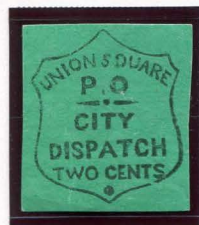


FORGERY B
TAYLOR - FORM AA14
2¢ BLACK ON
BLUE GRAY
(141L3)



FORGERY B
TAYLOR - FORM AA14
2¢ BLACK ON
MAUVE
(141L3)

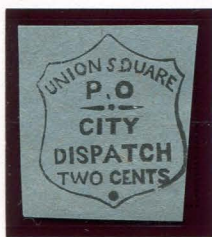
UNION SQUARE POST OFFICE



FORGERY B
TAYLOR - FORM AA14
2¢ BLACK ON
BRIGHT GREEN SC
(141L3)



FORGERY B
TAYLOR - FORM AA14
2¢ BLACK ON
GREEN SC
(141L3)



FORGERY B
TAYLOR
2¢ BLACK ON
BLUE (SHADE)
(141L3)



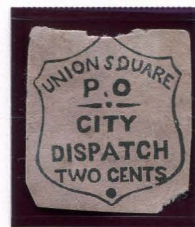
FORGERY B
TAYLOR
2¢ BLACK ON
BLUE (SHADE)
(141L3)



FORGERY B
TAYLOR
2¢ BLACK ON
BLUE GREEN
(141L3)



FORGERY B
TAYLOR
2¢ BLACK ON
GREEN
(141L3)



FORGERY B
TAYLOR
2¢ BLACK ON
DULL ROSE
(141L3)

UNION SQUARE POST OFFICE

Forgery D was printed by J.W. Scott and is based on the illustration from the Scott catalogues and albums.



FORGERY D
SCOTT
2¢ BLACK ON
DULL VIOLET ROSE
(141L3)

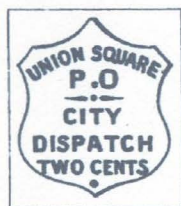


FORGERY D
SCOTT
2¢ BLACK ON
DULL VIOLET
(141L3)

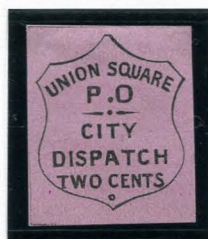


FORGERY D
SCOTT
2¢ BLACK ON
DULL ROSE
(141L3)

Forgery E is based on the illustration from early J.B. Moens stamp catalogues, which was lithographed by Pierre Schmitz.



FORGERY E
SCHMITZ
2¢ BLACK
BOOK ILLUSTRATION
(141L3)



FORGERY E
SCHMITZ
2¢ BLACK
ON VIOLET SC
(141L3)



FORGERY E
SCHMITZ
2¢ GOLD
ON PURPLE SC
(141L3)

UNION SQUARE POST OFFICE



FORGERY F
2c BLACK ON
VIOLET ROSE
(141L3)



FORGERY G
2c BLACK ON
ROSE BUFF
(141L3)



UNLISTED FORGERY
2c BLACK ON
DAMAGED RED
(141L3)