

THE
MIKE FARRELL
❧ COLLECTION ❧
OF INDEPENDENT MAILS

INCLUDING THE HISTORY, FORGERIES, & FANTASIES OF
UNITED STATES, LOCAL POSTS, CARRIERS,
INDEPENDENT MAIL ROUTES, & EXPRESS CO.S

WALKER'S PENNY POST

The information and identification within these selections is the individual work of the Farrell Collection. It is always recommended to consult multiple sources for additional information or opinions. Local post company descriptions are based on information available at the time of writing. Descriptions in the Farrell Collection were written based on personal research and sources including, but not limited to: Articles in the Carriers and Locals Society's The Penny Post; Amos Media's Scott Catalogue; Patton's The Private Local Post of the United States; Springer's Handbook of North American Cinderella Stamps; Lyons' Identifier for Carriers, Locals, Fakes Forgeries and Bogus Posts of the United States; articles in the USPCS's The Chronicle; Mosher's Catalog of Private Express Labels and Stamps; The Eastern Independent Mail Company Study Group's Eastern Independent Mail Companies and Express Mail Companies 1840-1845; Elliot Perry's Pat Paragraphs; James N. Drummond's Catalog of Philatelic Miscellany; and the notes of George Sloane and Gordon Stimmell.

Colors listed for stamps and forgeries are the opinions of the Farrell Collection based on viewing physical copies of the pieces under consistent lighting. Colors in the .pdfs may be slightly inaccurate due to manipulations from the scanning process, computer monitor settings, or (in event that the files are printed for offline viewing) the printing process.

Unless otherwise noted, stamps are identified by their Scott Catalogue numbers and forgeries are identified by their Lyons Identifier type. Scott numbers in parenthesis under listed forgeries represent approximately what stamp the forgery is attempting to imitate.

Copyright Amos Media Company - 2020

The Scott Numbers are the copyrighted property of Amos Media Company, and are used here under a licensing agreement with Amos. The marks Scott and Scott's are Registered in the U.S. Patent and Trademark Office, and are trademarks of Amos Media Company. No use may be made of these marks or of material in this publication, which is reprinted from a copyrighted publication of Amos Media Company., without the express written permission of Amos Media Company, Sidney, Ohio 45365.

WALKER'S PENNY POST

There is currently no recorded evidence that this was ever a genuine mail service. The bogus stamps were frequently advertised and sold by S. Allan Taylor, who printed most of the stamps surviving today. It is uncertain if the design was originally created by Taylor - it is sometimes attributed to Joseph J. Casey.



BOGUS 1
1¢ BLACK
ON CREAM



BOGUS 1
1¢ BLACK
ON BUFF



BOGUS 1
1¢ BLACK
ON VIOLET



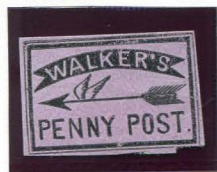
BOGUS 1
1¢ BLACK
ON YELLOW



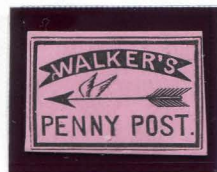
BOGUS 1
1¢ BLACK
ON GREEN

Walker's Penny Post bogus 1 (above) is easily identifiable by the presence of a dot above the arrow-head. It is the only type of this bogus to include this dot. It is also the only type not printed by Taylor.

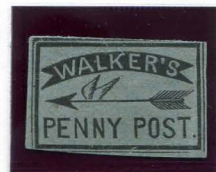
Bogus 2, a Taylor creation, has a thick apostrophe and short leg on the "R" of "Walker's".



BOGUS 2
TAYLOR - FORM AB12
1¢ BLACK
ON LILAC



BOGUS 2
TAYLOR - FORM AB12
1¢ BLACK
ON PINK



BOGUS 2
TAYLOR - FORM AB15
1¢ BLACK
ON GRAY BLUE

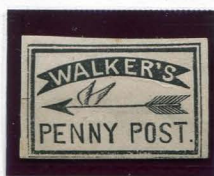


BOGUS 2
TAYLOR - FORM AB15
1¢ BLACK
ON BRIGHT GREEN SC

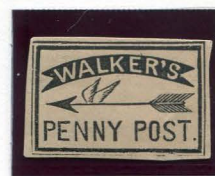
WALKER'S PENNY POST



BOGUS 2
TAYLOR - FORM BB5
1¢ BLACK
ON BRIGHT BLUE SC



BOGUS 2
TAYLOR - FORM BB7
1¢ BLACK
ON CREAM



BOGUS 2
TAYLOR - FORM BB7
1¢ BLACK
ON BUFF



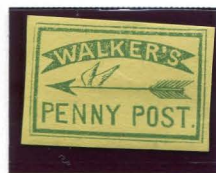
BOGUS 2
TAYLOR - FORM BB7
1¢ YELLOW GREEN
ON VIOLET GRAY



BOGUS 2
TAYLOR - FORM BB7
1¢ Y. GREEN (SHADE)
ON CREAM



BOGUS 2
TAYLOR - FORM BB7
1¢ Y. GREEN (SHADE)
ON CREAM



BOGUS 2
TAYLOR - FORM BB7
1¢ GREEN ON
YELLOW LAID



BOGUS 2
TAYLOR - FORM BB7
1¢ GREEN ON
L. BLUE GREEN LAID



BOGUS 2
TAYLOR
1¢ DARK PURPLE
ON WHITE

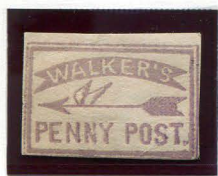


BOGUS 2
TAYLOR
1¢ DULL PURPLE
ON WHITE

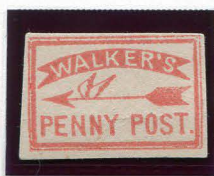


BOGUS 2
TAYLOR
1¢ PURPLE
ON WHITE

WALKER'S PENNY POST



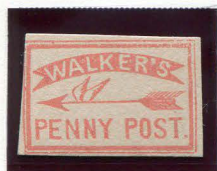
BOGUS 2
TAYLOR
1¢ VIOLET GRAY
ON WHITE



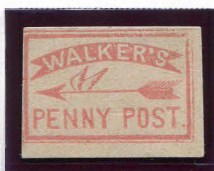
BOGUS 2
TAYLOR
1¢ LIGHT RED
ON WHITE



BOGUS 2
TAYLOR
1¢ PINK
ON WHITE



BOGUS 2
TAYLOR
1¢ SALMON
ON WHITE



BOGUS 2
TAYLOR
1¢ DULL SALMON
ON WHITE



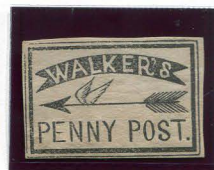
BOGUS 2
TAYLOR
1¢ LIGHT PINK
ON WHITE

Taylor produced another version of the Walker's Penny Post stamp. On this version, the "R" in "WALKER'S" has a long tail that curls upward. The apostrophe is also thinner and more curled.

This version of the design is used for boguses 3 and 4. Bogus 4 appears to be a worn down version of bogus 3, with the only significant difference being a break in the first "N" of "PENNY".



BOGUS 3
TAYLOR
1¢ BLACK
ON WHITE



BOGUS 3
TAYLOR
1¢ BLACK
ON CREAM

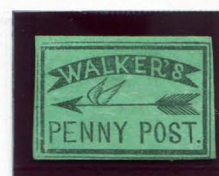
WALKER'S PENNY POST



BOGUS 3
TAYLOR
1¢ RED
ON WHITE



BOGUS 3
TAYLOR
1¢ RED
ON CREAM



BOGUS 3
TAYLOR
1¢ BLACK
ON GREEN SC



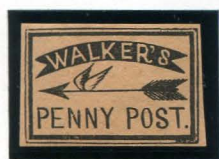
BOGUS 4
TAYLOR - FORM 2
1¢ BLACK
ON BLUE



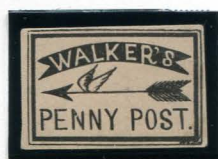
BOGUS 4
TAYLOR - FORM 2
1¢ BLACK
ON GREEN



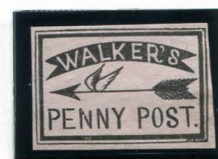
BOGUS 4
TAYLOR - FORM 2
1¢ BLACK
ON YELLOW



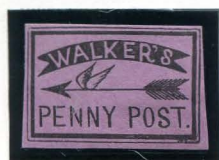
BOGUS 4
TAYLOR - FORM 2
1¢ BLACK
ON ORANGE BUFF



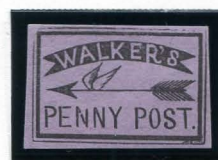
BOGUS 4
TAYLOR - FORM 2
1¢ BLACK
ON CREAM



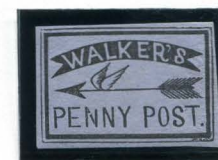
BOGUS 4
TAYLOR - FORM 2
1¢ BLACK
ON PALE PINK



BOGUS 4
TAYLOR - FORM 2
1¢ BLACK
ON PURPLE



BOGUS 4
TAYLOR - FORM 2
1¢ BLACK
ON LIGHT VIOLET



BOGUS 4
TAYLOR - FORM 2
1¢ BLACK
ON VIOLET GRAY

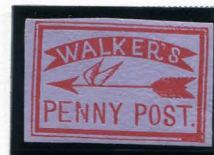
WALKER'S PENNY POST



BOGUS 4
TAYLOR - FORM 5
1c RED ON
WHITE



BOGUS 4
TAYLOR - FORM 5
1c RED ON
YELLOW SC



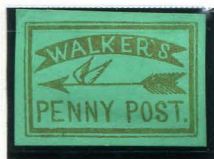
BOGUS 4
TAYLOR - FORM 5
1c RED ON
GRAY VIOLET SC



BOGUS 4
TAYLOR - FORM 12
1c RED ON
WHITE



BOGUS 4
TAYLOR - FORM 12
1c RED ON
GRAY



BOGUS 4
TAYLOR - FORM AA3
1c GOLD ON
DARK BROWN SC



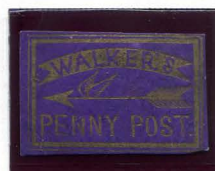
BOGUS 4
TAYLOR - FORM AA3
1c GOLD ON
DARK BROWN SC



BOGUS 4
TAYLOR - FORM AA3
1c GOLD ON
BRIGHT BLUE SC

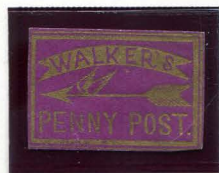


BOGUS 4
TAYLOR - FORM AA3
1c GOLD ON
VIOLET BLUE SC



BOGUS 4
TAYLOR - FORM AA3
1c GOLD ON
BRIGHT PURPLE SC

WALKER'S PENNY POST



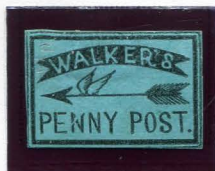
BOGUS 4
TAYLOR - FORM AA3
1¢ GOLD ON
MAGENTA SC



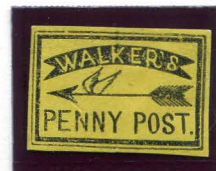
BOGUS 4
TAYLOR - FORM AA3
1¢ GOLD ON
PALE VIOLET SC



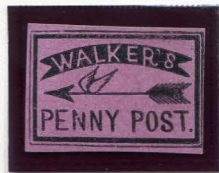
BOGUS 4
TAYLOR - FORM AA7
1¢ BLACK ON
BRONZE SC



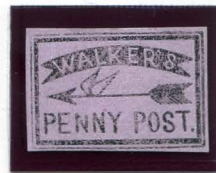
BOGUS 4
TAYLOR - FORM AA7
1¢ BLACK ON
TEAL SC



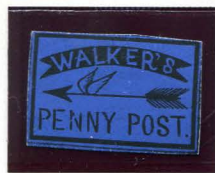
BOGUS 4
TAYLOR - FORM AA7
1¢ BLACK ON
YELLOW SC



BOGUS
TAYLOR - FORM AA9
1¢ BLACK ON
VIOLET PINK SC



BOGUS
TAYLOR - FORM AA9
1¢ BLACK ON
PALE PURPLE SC



BOGUS
TAYLOR - FORM AA9
1¢ BLACK ON
BLUE SC



BOGUS
TAYLOR - FORM AA9
1¢ BLACK ON
NAVY BLUE SC

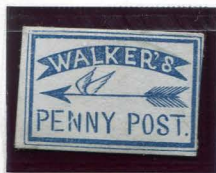


BOGUS
TAYLOR - FORM AA9
1¢ BLACK ON
BRIGHT NAVY BLUE SC

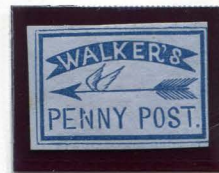
WALKER'S PENNY POST



BOGUS 4
TAYLOR - FORM AA15
1¢ DARK NAVY BLUE
ON WHITE



BOGUS 4
TAYLOR - FORM AA15
1¢ BLUE
ON WHITE



BOGUS 4
TAYLOR - FORM AA15
1¢ BLUE
ON BLUISH



BOGUS 4
TAYLOR - FORM AA18
1¢ YELLOW BROWN
ON WHITE



BOGUS 4
TAYLOR - FORM AA18
1¢ ORANGE BROWN
ON WHITE



BOGUS 4
TAYLOR - FORM AA18
1¢ BROWN
ON WHITE



BOGUS
TAYLOR
1¢ BROWN
ON WHITE



BOGUS
TAYLOR
1¢ GRAY BROWN
ON WHITE



BOGUS
TAYLOR
1¢ DARK BROWN
ON WHITE



BOGUS
TAYLOR
1¢ GREEN (SHADE)
ON WHITE

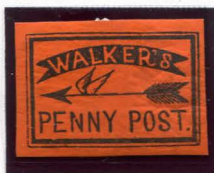


BOGUS
TAYLOR
1¢ GREEN (SHADE)
ON WHITE

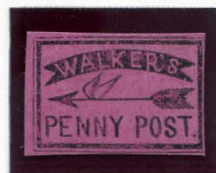
WALKER'S PENNY POST



BOGUS 4
TAYLOR
1¢ RED ON
WHITE



BOGUS 4
TAYLOR
1¢ BLACK ON
ORANGE SC



BOGUS 4
TAYLOR
1¢ BLACK ON
VIOLET SC



BOGUS 4
TAYLOR
1¢ BLACK ON
PALE PINK H. LAID



BOGUS 4
TAYLOR
1¢ BLACK ON
PALE PINK V. LAID