

THE
MIKE FARRELL
❧ COLLECTION ❧
OF INDEPENDENT MAILS

INCLUDING THE HISTORY, FORGERIES, & FANTASIES OF
UNITED STATES, LOCAL POSTS, CARRIERS,
INDEPENDENT MAIL ROUTES, & EXPRESS CO.S

WALTON &. CO'S CITY EXPRESS

The information and identification within these selections is the individual work of the Farrell Collection. It is always recommended to consult multiple sources for additional information or opinions. Local post company descriptions are based on information available at the time of writing. Descriptions in the Farrell Collection were written based on personal research and sources including, but not limited to: Articles in the Carriers and Locals Society's The Penny Post; Amos Media's Scott Catalogue; Patton's The Private Local Post of the United States; Springer's Handbook of North American Cinderella Stamps; Lyons' Identifier for Carriers, Locals, Fakes Forgeries and Bogus Posts of the United States; articles in the USPCS's The Chronicle; Mosher's Catalog of Private Express Labels and Stamps; The Eastern Independent Mail Company Study Group's Eastern Independent Mail Companies and Express Mail Companies 1840-1845; Elliot Perry's Pat Paragraphs; James N. Drummond's Catalog of Philatelic Miscellany; and the notes of George Sloane and Gordon Stimmell.

Colors listed for stamps and forgeries are the opinions of the Farrell Collection based on viewing physical copies of the pieces under consistent lighting. Colors in the .pdfs may be slightly inaccurate due to manipulations from the scanning process, computer monitor settings, or (in event that the files are printed for offline viewing) the printing process.

Unless otherwise noted, stamps are identified by their Scott Catalogue numbers and forgeries are identified by their Lyons Identifier type. Scott numbers in parenthesis under listed forgeries represent approximately what stamp the forgery is attempting to imitate.

Copyright Amos Media Company - 2019

The Scott Numbers are the copyrighted property of Amos Media Company, and are used here under a licensing agreement with Amos. The marks Scott and Scott's are Registered in the U.S. Patent and Trademark Office, and are trademarks of Amos Media Company. No use may be made of these marks or of material in this publication, which is reprinted from a copyrighted publication of Amos Media Company., without the express written permission of Amos Media Company, Sidney, Ohio 45365.

WALTON & CO'S CITY EXPRESS

Walton & Co's City Express operated from 1845 to 1847, and represents one of the successions of the "Brooklyn City Express". Some form of the "Brooklyn City Express" ran from 1844 until 1864, although the post's title and proprietor changed multiple times.

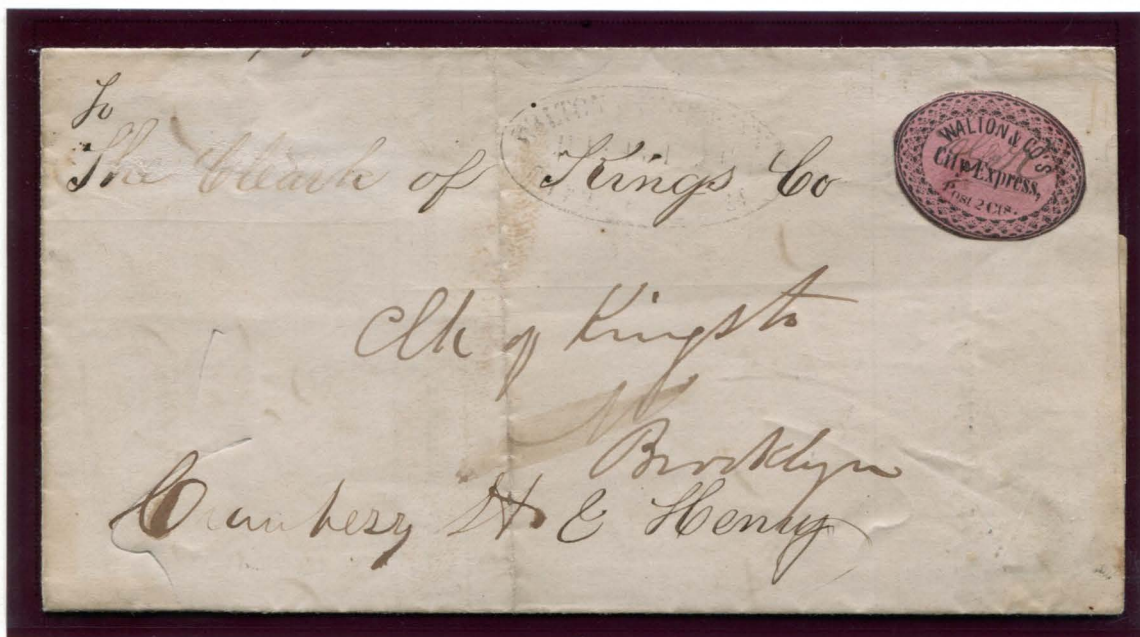
Wellington Walton, an agent for Boyd's Brooklyn Express, is believed to be the proprietor of Walton & Co's City Express. Boyd left his Brooklyn express branch in 1845, focusing on his New York operation. Around this time, Walton took up the post as his own.

Sometime in 1847, Walton sold the post to Henry Kidder, who continued the business as "Kidder's City Express Post".

Walton issued one type of stamp, a 2¢ black on pink surface colored stamp with a decorative oval on a rectangular background of horizontal lines. These stamps are rare. The example at right is the copy currently illustrated in the Scott's *Specialized Catalog*.



142L1
2¢ BLACK
ON PINK SC



142L1: 2¢ BLACK ON PINK SC
CUT TO OVAL SHAPE
MANUSCRIPT INITIALS CANCELLATION
GENUINE ON COVER WITH
"WALTON'S BROOKLYN CITY EXPRESS POST" HANDSTAMP
PF CERT #476875

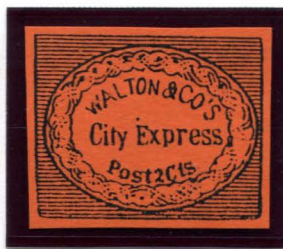
The stamp used on the cover above was cut to shape at the inner oval. It was used to pay for delivery of court documents. This cover also shows a faint strike of the "Walton's Brooklyn" oval dates-tamp. This handstamp is very similar to the predecessor "Boyd's Brooklyn", and to the successor "Kidder's Brooklyn" handstamps.

WALTON & CO'S CITY EXPRESS

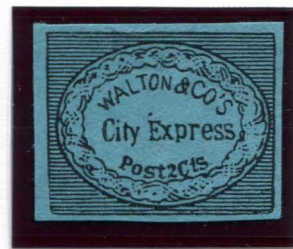
As early as 1904, J. Walter Scott printed an illustration of the Walton & Co. stamp in his catalogues. Forgeries based on this illustration are known as "Forgery A".



PHOTOCOPY
OF ILLUSTRATION
FROM 1904 SCOTT
CATALOGUE



FORGERY A
MODERN SCOTT VAR.
2c BLACK
ON ORANGE
(142L1)



FORGERY A
MODERN SCOTT VAR.
2c BLACK
ON TEAL
(142L1)

S. Allan Taylor made a bogus stamp design based on the Walton & Co. City Express name. Taylor's version uses a checkerboard border that he also used for his Blockade Postage bogus.



BOGUS 1
TAYLOR - FORM C
2c DULL RED
ON WHITE



BOGUS 1
TAYLOR - FORM C
2c BLACK
ON YELLOW



BOGUS 1
TAYLOR - FORM C
2c BLACK
ON GREEN SC



BOGUS 1
TAYLOR - FORM C
2c RED
ON PALE PINK V. LAID



BOGUS 1
TAYLOR - FORM CC3
2c BLACK
ON WHITE RIBBED
W/ GOLD CLOVER OVERPRINT



BOGUS 1
TAYLOR - FORM CC3
2c BLACK
ON GRAY VIOLET SC



BOGUS 1
TAYLOR - FORM CC3
2c BLACK
ON LIGHT VIOLET SC

WALTON & CO'S CITY EXPRESS

The Taylor bogus below is somewhat strange - it is printed on stiff white paper with text on the reverse. While Taylor was known to print on a variety of papers, including printers' waste, this paper type is unusual.

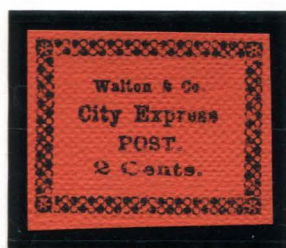


BOGUS 1
TAYLOR
2¢ BLACK
ON STIFF WHITE



BOGUS 1
PHOTOCOPY OF
STAMP REVERSE

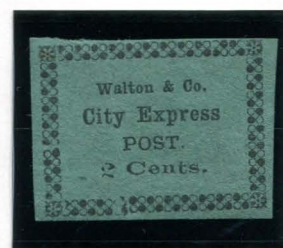
A second bogus Walton & Co. design is known. This version is somewhat similar to the Taylor bogus, but the border ornaments are black and white circles. The text in the center is the same, but printed in a different typeface.



BOGUS 2
2¢ BLACK
ON VERMILION



BOGUS 2
2¢ BLACK
ON DARK GREEN



BOGUS 2
2¢ BLACK
ON GREEN



BOGUS 2
2¢ BLACK
ON YELLOW



BOGUS 2
2¢ BLACK
ON DULL LILAC