

THE
MIKE FARRELL
COLLECTION
OF INDEPENDENT MAILS

INCLUDING THE HISTORY, FORGERIES, & FANTASIES OF
UNITED STATES, LOCAL POSTS, CARRIERS,
INDEPENDENT MAIL ROUTES, & EXPRESS CO.S

WARWICK'S CITY DISPATCH POST

The information and identification within these selections is the individual work of the Farrell Collection. It is always recommended to consult multiple sources for additional information or opinions. Local post company descriptions are based on information available at the time of writing. Descriptions in the Farrell Collection were written based on personal research and sources including, but not limited to: Articles in the Carriers and Locals Society's The Penny Post; Amos Media's Scott Catalogue; Patton's The Private Local Post of the United States; Springer's Handbook of North American Cinderella Stamps; Lyons' Identifier for Carriers, Locals, Fakes Forgeries and Bogus Posts of the United States; articles in the USPCS's The Chronicle; Mosher's Catalog of Private Express Labels and Stamps; The Eastern Independent Mail Company Study Group's Eastern Independent Mail Companies and Express Mail Companies 1840-1845; Elliot Perry's Pat Paragraphs; James N. Drummond's Catalog of Philatelic Miscellany; and the notes of George Sloane and Gordon Stimmell.

Colors listed for stamps and forgeries are the opinions of the Farrell Collection based on viewing physical copies of the pieces under consistent lighting. Colors in the .pdfs may be slightly inaccurate due to manipulations from the scanning process, computer monitor settings, or (in event that the files are printed for offline viewing) the printing process.

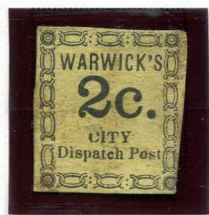
Unless otherwise noted, stamps are identified by their Scott Catalogue numbers and forgeries are identified by their Lyons Identifier type. Scott numbers in parenthesis under listed forgeries represent approximately what stamp the forgery is attempting to imitate.

WARWICK'S CITY DISPATCH POST

This bogus New York City Post was established sometime in 1858, and was able to operate for a short time before being reported for not delivering mail. Upon searching the post, police found many of the undelivered letters and \$300 (roughly \$8,900 adjusted for inflation) in money stolen from the mail.

ARTICLE PUBLISHED IN THE *NEW YORK HERALD*
DECEMBER 4, 1858 (VOL 23, ISSUE 336, PAGE 5)

The article describing the arrest notes that the post advertised their 2¢ stamps could be purchased from carriers. These would be the "original" stamps of the post, although which of the Warwick's stamp types is the "original" has not yet been proven. Most likely the original type is the example shown below, with small colons between the chain links in the top and bottom border, and a rounded apostrophe in "Warwick's".



ORIGINAL
UNLISTED TYPE 1
2¢ BLACK
ON YELLOW

ARREST OF THE PROPRIETOR OF AN ALLEGED BOGUS CITY DISPATCH POST—Saturday morning Officer Armstrong, of the Mayor's squad, took into custody a young man named Charles S. Warwick alias Hall alias Taylor, the proprietor of an alleged bogus city dispatch post, against whom it is alleged he has failed to carry letters dropped in the boxes for delivery to their proper place of destination, and has or some time past made it a business of opening all letters received, and, where money was found enclosed, the same was appropriated to his own use and the letters destroyed. It appears that not long since a gentleman residing in the upper part of the city had, on one or two occasions, made use of Warwick's post, but neither time did his letters reach the party to whom they were directed. He accordingly, after some inquiry, was unable to find any headquarters for the above post, and being satisfied that all was not right he laid the facts before the Mayor, who immediately placed the matter in the hands of the above officer. Officer Armstrong soon succeeded in coming across one of the carriers, who was a boy about ten years of age, who stated on his arrest that he was employed by Warwick to collect the letters but not to deliver them—that he collected from twenty to thirty letters a day, and that Warwick had his office in a boarding house in New Bowery. A watch was accordingly kept on the house, and soon the officer had the satisfaction of meeting his man, just as he was about to enter his room, when he was taken into custody. A search was then made and a large number of letters found in his room, a considerable number opened, and among them two letters that the officers had the day previous placed in one of the boxes, containing \$15 in "quiver" money, for the purpose of detecting Warwick. A large number of his postbills were also found in the room of the following description:—

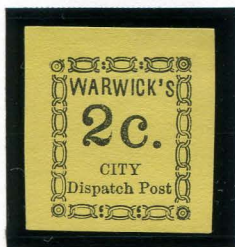
WARWICK'S CITY DISPATCH POST.—Postage two cents, in all parts of the city, south of Fifty-fourth Street. Letters for the United States mails must be prepaid, (according to act of Congress, passed March 3, 1855,) or they will not be forwarded from the General Post Office. "No money or valuable letters will be accounted for, in any case, unless when given personally to the carrier, who will give a receipt for the same."

N. B.—Security notices delivered at reduced rates. Stamps for sale by the carriers.

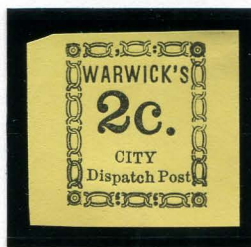
CHARLES S. WARWICK, Proprietor.

The accused, on being brought before the Mayor, proved to be the same man who was connected with a man named Smith, who was arrested about six months ago for a like offence. He has also been an actor, and appeared at the Chatham theatre several times—once in the play of *Lizette*. The amount of money that he has succeeded in extracting from letters is thought to be about \$300. Justice Welch committed him to the Tombs for examination in default of bail.

Five years later, the New York Herald advertised a letter waiting at the Post Office for "Warwick's City Dispatch Post". This was around the time that George Hussey was selling his "reprint" stamps.



REPRINT
HUSSEY
TYPE 1A
2¢ BLACK
ON YELLOW

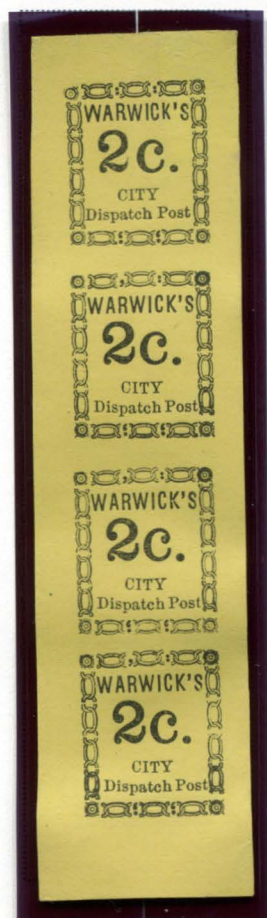


REPRINT
HUSSEY
TYPE 1A
2¢ BLACK
ON YELLOW



REPRINT
HUSSEY
TYPE 1B - VAR
2¢ BLACK
ON YELLOW
RAISED "I" IN "CITY"

WARWICK'S CITY DISPATCH POST



HUSSEY REPRINT
TYPE 1 - A, B, B, B
2¢ BLACK ON YELLOW
VERTICAL STRIP OF FOUR



HUSSEY REPRINT
TYPE 1 - A, B
2¢ BLACK ON YELLOW
VERTICAL PAIR

J.B. Moens published illustrations of the Warwick's stamp in his catalogues. His early illustration (1864) was lithographed by Pierre Schmitz. The artist of the later illustration is unknown. These illustrations were copied to create forgeries.



FORGERY A
AFTER MOENS
2¢ BLACK
ON YELLOW



FORGERY B
SCHMITZ (1864)
2¢ BRONZE
ON YELLOW

WARWICK'S CITY DISPATCH POST



FORGERY B
SCHMITZ (1864)
2¢ RED (SHADE)
ON YELLOW



FORGERY B
SCHMITZ (1864)
2¢ RED (SHADE)
ON YELLOW



FORGERY B
SCHMITZ (1864)
2¢ RED (SHADE)
ON WHITE



FORGERY B
SCHMITZ (1864)
2¢ RED (SHADE)
ON CREAM



FORGERY B
SCHMITZ (1864)
2¢ RED (SHADE)
ON BUFF

It is unlikely that Warwick's ever used more than one stamp design, but the following "Type 2" stamps are listed as forgeries or reprints rather than boguses. This design uses a diamond border.

The Hussey Type 2 "reprints" are known in two varieties, with an additional sub-varieties likely based on position within the strips they were printed in.



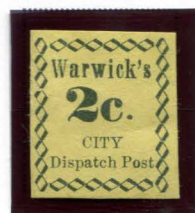
HUSSEY REPRINT TYPE 2
2¢ BLACK ON YELLOW
VERTICAL STRIP OF FOUR : A, B, B, B

WARWICK'S CITY DISPATCH POST

The type 2a Hussey reprints have two sub-varieties: The first, found in position one of the vertical strip of four, has a curved and broken diamond in the left side border and a flaw in the "k" of "Warwick's"; the second, from an unknown position, does not have either of these flaws.



HUSSEY REPRINT
TYPE 2 A
POSITION 1
2¢ BLACK ON YELLOW



HUSSEY REPRINT
TYPE 2 A
NO POSITION
2¢ BLACK ON YELLOW

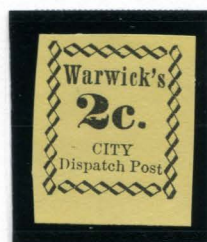
There are four sub-varieties of the Type 2b reprints. On stamps in position 2, the first "W" in "Warwick's" is broken. Stamps in position 3 have a broken diamond in the middle of the left border. Stamps from position 4 show a line above the "l" of "Dispatch". A fourth subtype with no known position has none of the previous flaws, and uses a smaller period after "2c".



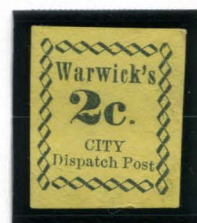
HUSSEY REPRINT
TYPE 2 B
POSITION 2
2¢ BLACK ON YELLOW



HUSSEY REPRINT
TYPE 2 B
POSITION 3
2¢ BLACK ON YELLOW



HUSSEY REPRINT
TYPE 2 B
POSITION 4
2¢ BLACK ON YELLOW

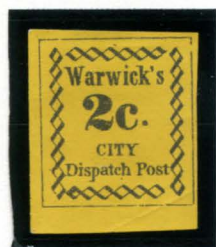


HUSSEY REPRINT
TYPE 2 B
NO POSITION
2¢ BLACK ON YELLOW

According to Thomas Wood's records, he printed both types of Hussey's Warwick's stamps. Each printing produced 1,000 subjects of each type - the first in 1862, another in 1864, and the final in 1866.

WARWICK'S CITY DISPATCH POST

Type 2, forgery A is based on the illustration in the later Moen's catalogues.



FORGERY A
TYPE 2
AFTER MOENS
2c BLACK ON
DEEP YELLOW SC

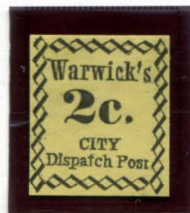


FORGERY A
TYPE 2
AFTER MOENS
2c BLACK ON
THIN GRAY
(NEWSPRINT)

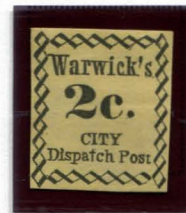
Type 2, forgery B has not been attributed to any specific forger.



FORGERY B
TYPE 2
2c BLACK ON
LIGHT YELLOW



FORGERY B
TYPE 2
2c BLACK ON
YELLOW



FORGERY B
TYPE 2
2c BLACK ON
DULL YELLOW

WARWICK'S CITY DISPATCH POST

Many different bogus stamps were made using the Warwick's City Dispatch name. These stamps will be organized in this collection by "Style" - groups of bogus stamps with similar designs.

Style A bogus stamps are typographed. These stamps have a double straight line border, with the outer line thicker than the inner. They read "WARWICK'S / (value) / City / Dispatch Post." - each line is a different serif font. "City" is written with a capital "C" and following letters in lowercase. This style is known in 2¢ and 6¢ denominations. The numerals are printed in a thick, curvy font with bold ball decorations for serif points. It is the only example with a ball serif on the lower "2" point.



BOGUS 1
STYLE A
2¢ GREEN
ON WHITE



BOGUS 1
STYLE A
2¢ LIGHT GREEN
ON WHITE



BOGUS 1
STYLE A
2¢ PALE GREEN
ON WHITE



BOGUS 13
STYLE A
6¢ GREEN
ON WHITE



BOGUS 13
STYLE A
6¢ LIGHT GREEN
ON WHITE



BOGUS 13
STYLE A
6¢ PALE GREEN
ON WHITE

The forger of the Style A bogus stamps is unknown.

WARWICK'S CITY DISPATCH POST

Style B bogus stamps are typographed. Like Style A, these stamps have a double straight line border, with the outer line thicker than the inner. They read "WARWICK'S / 2¢ / CITY / Dispatch Post." - each line is a different serif font. "City" is written in all capital letters. This style is known in 2¢ and 6¢ denominations. The numerals are printed in a curvy font with ball decorations for serif points.

There are some variations within the style. Style B₁ has a bold period after "2c".



BOGUS 2
STYLE B1
2¢ RED (SHADE)
ON WHITE
BREAKS IN "DISPATCH"



BOGUS 2
STYLE B1
2¢ RED (SHADE)
ON WHITE
BREAKS IN "DISPATCH"



BOGUS 2
STYLE B1
2¢ RED (SHADE)
ON WHITE
TOP SERIF ON
"P" IN "POST"



BOGUS 2
STYLE B1
2¢ RED (SHADE)
ON WHITE
TOP SERIF ON
"P" IN "POST"



BOGUS 15
STYLE B1
2¢ RED (SHADE)
ON WHITE
NO BREAKS IN
"DISPATCH"



BOGUS 15
STYLE B1
2¢ RED (SHADE)
ON WHITE
NO BREAKS IN
"DISPATCH"



BOGUS 15
STYLE B1
2¢ RED (SHADE)
ON WHITE
NO BREAKS IN
"DISPATCH"

Style B₂ has slightly smaller text. There are two varieties with different "S" in "WARWICK'S".



BOGUS 6
STYLE B2
2¢ BLACK
ON BUFF



BOGUS 6
STYLE B2
2¢ BLACK
ON DULL BUFF



BOGUS 6
STYLE B2
2¢ BLACK
ON GRAY BUFF



BOGUS 6VAR
STYLE B2
2¢ BLACK
ON BUFF
DIFFERENT "S"



BOGUS 6VAR
STYLE B2
2¢ BLACK
ON BUFF
DIFFERENT "S"

WARWICK'S CITY DISPATCH POST

Style B3 has a thinner "C" in "WARWICK'S". The value is larger, and has a bold period after "2c"



BOGUS 7
STYLE B3
2c BRONZE
ON WHITE



BOGUS 7
STYLE B3
2c RED
ON WHITE



BOGUS 7
STYLE B3
2c BLUE
ON BUFF



BOGUS 7
STYLE B3
2c BRIGHT BLUE
ON WHITE



BOGUS 7
STYLE B3
2c YELLOW
ON WHITE

Style B4 has slightly taller and thinner text. There is a break in the bottom left border. This is the only B-style bogus with a 6c denomination.



BOGUS 11
STYLE B4
2c RED (SHADE)
ON WHITE



BOGUS 11
STYLE B4
6c RED (SHADE)
ON WHITE

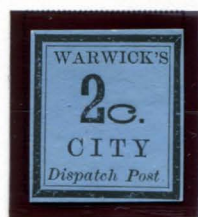


BOGUS 11
STYLE B4
6c RED (SHADE)
ON WHITE

WARWICK'S CITY DISPATCH POST

Style C stamps were made and printed by S.A. Taylor. These are similar in design to style B - they have a double strightline border with a thick outer border; and read "WARWICK'S / 2c / CITY / Dispatch Post" with "CITY" in all capital letters. The numeral "2 in the denomination is printed with straight, blocky serifs, and the "c" is long and flat shaped. "Dispatch Post" is printed in italics.

These stamps are listed as "Bogus 4" or "Bogus 5" based primarily on the inclusion of a period after "Dispatch Post" - this variation is most likely the result of a lighter printing rather than a change to the die used to print the stamps. For this collection, they are considered the same bogus.



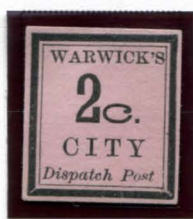
BOGUS 4
STYLE C
TAYLOR - FORM B2
2c BLACK
ON LIGHT BLUE SC



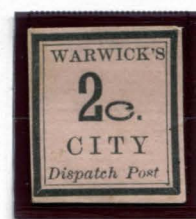
BOGUS 4
STYLE C
TAYLOR - FORM B2
2c BLACK
ON ORANGE RED SC



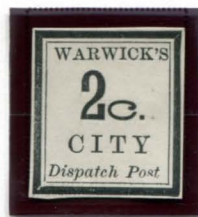
BOGUS 4
STYLE C
TAYLOR - FORM AB10
2c BLACK
ON BRIGHT PINK LAID



BOGUS 4
STYLE C
TAYLOR - FORM AB10
2c BLACK
ON FLESH LAID



BOGUS 4
STYLE C
TAYLOR - FORM AB10
2c BLACK
ON FLESH LAID



BOGUS 4
STYLE C
TAYLOR - FORM AB18
2c BLACK
ON WHITE



BOGUS 4
STYLE C
TAYLOR - FORM AB18
2c BLACK
ON OFF-WHITE

WARWICK'S CITY DISPATCH POST



BOGUS 4
STYLE C
TAYLOR - FORM AB18
2c BLACK
ON LIGHT ORANGE



BOGUS 4
STYLE C
TAYLOR - FORM AB18
2c BLACK
ON GREEN SC



BOGUS 4
STYLE C
TAYLOR - FORM AB18
2c BLACK
ON LIGHT GREEN SC



BOGUS 4
STYLE C
TAYLOR - FORM AB19
2c BLACK
ON ORANGE SC



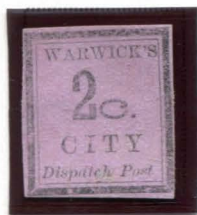
BOGUS 4
STYLE C
TAYLOR - FORM BB4
2c RED
ON GRAY BLUE LAID



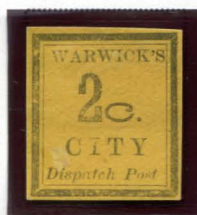
BOGUS 4
STYLE C
TAYLOR - FORM BB4
2c RED
ON ORANGE



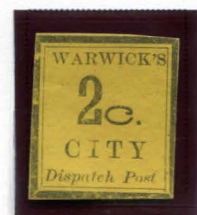
BOGUS 4
STYLE C
TAYLOR - FORM BB4
2c RED
ON BLUISH GREEN



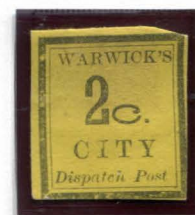
BOGUS 4
STYLE C
TAYLOR - FORM BB5
2c BLACK
ON LILAC SC



BOGUS 4
STYLE C
TAYLOR
2c BLACK ON
ON DEEP YELLOW SC



BOGUS 4
STYLE C
TAYLOR
2c BLACK ON
ON YELLOW SC



BOGUS 4
STYLE C
TAYLOR
2c BLACK ON
ON LIGHT YELLOW SC

WARWICK'S CITY DISPATCH POST

Style D stamps were also produced by Taylor. These stamps are similar to the Style B stamps, with the same double straight line border with thicker outer border and text reading "WARWICK'S / 6c / CITY / Dispatch Post." City is in all caps. This style is only known in the 6c value. The numeral "6" is very thin, and the "c" has a straight serif. The font for "Dispatch Post" is short.



BOGUS 12
STYLE D
TAYLOR - FORM M1
6c BLACK
ON WHITE LAID



BOGUS 12
STYLE D
TAYLOR - FORM M1
6c BLACK
ON GREEN SC



BOGUS 12
STYLE D
TAYLOR - FORM M1
6c BLACK
ON VERMILION SC



BOGUS 12
STYLE D
TAYLOR - FORM M1
6c BLACK
ON YELLOW SC



BOGUS 12
STYLE D
TAYLOR - FORM M1
6c BLACK
ON CRIMSON SC

Style E is another Taylor creation. It has a border of diamonds with filled centers and a 6c denomination.



BOGUS 14
STYLE E
TAYLOR - FORM C
6c DULL RED
ON WHITE



BOGUS 14
STYLE E
TAYLOR - FORM C
6c BLACK
ON YELLOW



BOGUS 14
STYLE E
TAYLOR - FORM C
6c BLACK
ON GREEN SC

WARWICK'S CITY DISPATCH POST



BOGUS 14
STYLE E
TAYLOR - FORM C
6c RED ON
PALE PINK LAID



BOGUS 14
STYLE E
TAYLOR - FORM C
6c RED ON
PINKISH CREAM LAID



BOGUS 14
STYLE E
TAYLOR - FORM CC1
6c BLACK
ON VERMILION SC



BOGUS 14
STYLE E
TAYLOR - FORM CC1
6c BLACK
ON PEACH SC



BOGUS 14
STYLE E
TAYLOR - FORM CC1
6c BLACK
ON GRAY BROWN SC

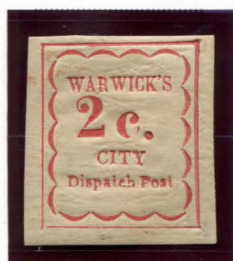


BOGUS 14
STYLE E
TAYLOR - FORM CC1
6c BLACK
ON ORANGE BUFF SC

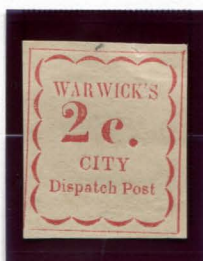


BOGUS 14
STYLE E
TAYLOR - FORM CC1
6c BLACK
ON BLUE GRAY SC

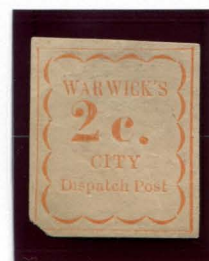
The **Style F** design is tall with a thin, straight line outer border and a scalloped inner border. The forger responsible for this design is unknown.



BOGUS 8
STYLE F
2c RED
ON CREAM



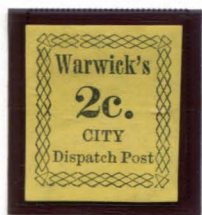
BOGUS 8
STYLE F
2c DARK RED
ON CREAM



BOGUS 8
STYLE F
2c LIGHT RED
ON CREAM

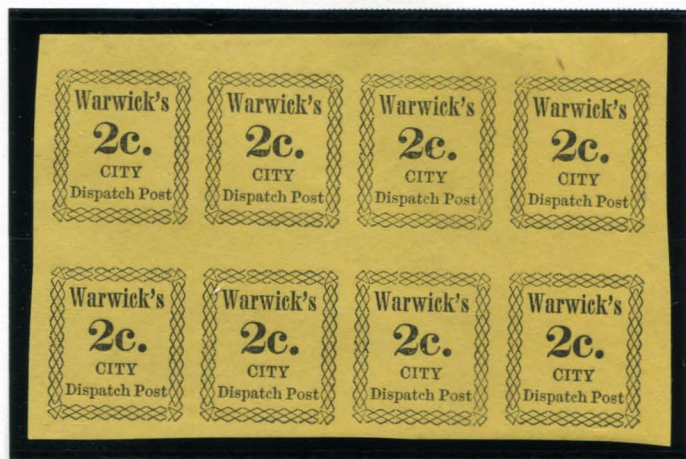
WARWICK'S CITY DISPATCH POST

Style G stamps have a border of crossed diamonds. "Warwick's" is written with a capital "W" and lowercase following letters.



BOGUS 9
STYLE F
2c BLACK
ON YELLOW

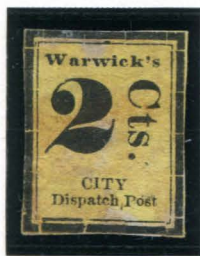
BOGUS 9 - STYLE F
BLOCK OF EIGHT
2c BLACK ON YELLOW



The **Style H** stamps have a border of negative diamonds in dark squares. "Warwick's" is typed in mixed caps, and the numeral "2" is bold.



BOGUS 10
STYLE H
2c BLACK
ON THIN GRAY



BOGUS 16
STYLE I
2c BLACK
ON YELLOW

The **Style I** design reads "2 Cts." instead of "2c". The numeral "2" is large, and "Cts." is printed vertically. The double straight line border (with thicker outer border) is broken in multiple sections.

WARWICK'S CITY DISPATCH POST

Style J stamps are large, with small text and lots of negative space. It reads "WARWICK'S / (value) / CITY DISPATCH" in a single sans serif font. The value is printed in a larger decorative font filled in with diagonal lines. It is known in three denominations: 5¢, 6¢, and 7¢. The border is a thin squiggly line.



BOGUS 18
STYLE J
5¢ PURPLE ON WHITE



BOGUS 18
STYLE J
5¢ PURPLE
ON WHITE V. LAID



BOGUS 18
STYLE J
6¢ BLUE
ON WHITE H. LAID



BOGUS 18
STYLE J
7¢ BLACK
ON STIFF WHITE

Style K stamps have a border of shaded diamonds with starbursts at the corners. This design is slightly longer than it is tall. It is only known in the 6¢ denomination. The text reads "WARWICK'S / 6c / CITY / Dispatch Post". "CITY", in call caps, is the only line with a serif font. The printer of this bogus is unknown.



BOGUS 19
STYLE K
6¢ BLACK
ON OLIVE GREEN



BOGUS 19
STYLE K
6¢ BLACK
ON TAN BUFF



BOGUS 19
STYLE K
6¢ BLACK
ON GREEN

WARWICK'S CITY DISPATCH POST

The **Style L** bogus is unlisted. This unusual design is much longer than it is tall. It has a border of leafy branches with button shapes in the corners. the text reads "WARWICK'S / 2 Cts. / CITY DISPATCH POST", with "2 Cts." positioned sideways.



STYLE L
2 BLACK
ON ORANGE SC

Another unlisted design, **Style M** has an unusual border. It appears it tried to imitate the "original" chain and colon border, but in very low quality, giving the appearance of sharp smudges.



STYLE M
2c BLACK
ON YELLOW