

THE  
MIKE FARRELL  
❧ COLLECTION ❧  
OF INDEPENDENT MAILS

INCLUDING THE HISTORY, FORGERIES, & FANTASIES OF  
UNITED STATES, LOCAL POSTS, CARRIERS,  
INDEPENDENT MAIL ROUTES, & EXPRESS CO.S

WINANS' CITY POST

The information and identification within these selections is the individual work of the Farrell Collection. It is always recommended to consult multiple sources for additional information or opinions. Local post company descriptions are based on information available at the time of writing. Descriptions in the Farrell Collection were written based on personal research and sources including, but not limited to: Articles in the Carriers and Locals Society's The Penny Post; Amos Media's Scott Catalogue; Patton's The Private Local Post of the United States; Springer's Handbook of North American Cinderella Stamps; Lyons' Identifier for Carriers, Locals, Fakes Forgeries and Bogus Posts of the United States; articles in the USPCS's The Chronicle; Mosher's Catalog of Private Express Labels and Stamps; The Eastern Independent Mail Company Study Group's Eastern Independent Mail Companies and Express Mail Companies 1840-1845; Elliot Perry's Pat Paragraphs; James N. Drummond's Catalog of Philatelic Miscellany; and the notes of George Sloane and Gordon Stimmell.

Colors listed for stamps and forgeries are the opinions of the Farrell Collection based on viewing physical copies of the pieces under consistent lighting. Colors in the .pdfs may be slightly inaccurate due to manipulations from the scanning process, computer monitor settings, or (in event that the files are printed for offline viewing) the printing process.

Unless otherwise noted, stamps are identified by their Scott Catalogue numbers and forgeries are identified by their Lyons Identifier type. Scott numbers in parenthesis under listed forgeries represent approximately what stamp the forgery is attempting to imitate.



# WINANS' CITY POST

This is one of the oldest bogus posts recorded. It was listed in the Berger-Levrault catalogue in June 1862, although there was not a description of the stamp other than the name and values. The stamp was illustrated in Moen's by December of 1862. The stamp design was very popular, and most stamp forgers of the time had their own version of it.

Although some publications listed the post as a New York City local, most journals reported the stamp as the product of a local post or parcel express operating in Baltimore, Maryland. The *Wood's Baltimore City Directory* for years 1860 and 1864 do not list any local posts, nor is anyone named Winans listed as a carrier, express, or post clerk.

PORTRAIT OF  
ROSS WINANS



A Winans family did live in Baltimore at the time, but they had no known connection with mail delivery. The Winans were most well known for manufacturing steam engines and ships, but they also made munitions during the Civil War, including guns, bullets, and grapeshot. This is possibly referenced in the unique design of the stamp, which features a winged bomb, supposedly based on a hand grenade.



WINANS' CITY POST  
BOGUS A



18<sup>TH</sup> CENTURY HAND GRENADES



CANISTER OF NAVAL  
GRAPESHOT, CIRCA 1862  
PHOTO BY JODI FREDERIKSEN,  
AMERICAN CIVIL WAR MUSEUM



# WINANS' CITY POST

The Winans Bogus A stamps were created by Thomas Woods and sold by George Hussey. Wood's book reports at least six printings: the earliest in November 1863, and the latest in February 1866.

Four clichés of the stamp were produced, and the numeral was changed to print four different values. The bogus A stamps can be classified into subtypes based on the cliché it was printed with. The stamps were printed in vertical strips of four by arranging the clichés into a setting. Several different arrangements to the setting are known.

As the stamps were printed multiple times, damage to the dies resulted in additional flaws and variations. Although there is speculation that early and late printings can be determined by recorded flaws, differing printing impressions and unrecorded flaws make it difficult to create a definitive timeline.

## CONSTANT CLICHÉ VARIATIONS

### SUBTYPE A



- A darkened area in the background at the lower right corner
- The O and S of "POST" are printed very close together
- In some printings, a dark flaw is on the body of the bomb
- Space between numeral and "CENTS" ranges from 1.5mm to 2mm.

### SUBTYPE B



- A dented loop on the P of "POST"
- The O and S of "POST" are printed close together
- Space between numeral and "CENTS" ranges from 1.75mm to 2.5mm

### SUBTYPE C



- A white flaw on the bomb, directly under the wing – usually a line, sometimes rounder
- Space between numeral and "CENTS" ranges from 2mm to 3.5mm

### SUBTYPE D



- The top-left serif of the W in "WINANS" is angled downward
- The apostrophe is very thick
- Space between numeral and "CENTS" ranges from 2.5mm to 3mm



# WINANS' CITY POST

## BOGUS A, TYPE A

The lower right corner of the background in type a was broken - on most examples it is retouched and appears as a darkened area. The O and S of "POST" are printed very close together. In later printings, a dark flaw occurs on the lower center of the bomb.

Additional flaws, variations, and spacing information are noted on individual stamps.



BOGUS A  
TYPE A  
WOODS / HUSSEY  
2¢ BLACK  
ON WHITE WOVE  
1mm SPACE  
BROKEN CORNER



BOGUS A  
TYPE A  
WOODS / HUSSEY  
2¢ BLACK  
ON WHITE WOVE  
1mm SPACE  
BROKEN CORNER



BOGUS A  
TYPE A  
WOODS / HUSSEY  
2¢ BLACK  
ON WHITE WOVE  
1mm SPACE  
CONSISTENT FLAWS



BOGUS A  
TYPE A  
WOODS / HUSSEY  
2¢ BLACK  
ON WHITE  
2mm SPACE  
RETOUCHED "E" TOP



BOGUS A  
TYPE A  
WOODS / HUSSEY  
2¢ BLACK  
ON WHITE  
2.5mm SPACE  
RETOUCHED "E" TOP



BOGUS A  
TYPE A  
WOODS / HUSSEY  
2¢ BLACK  
ON WHITE  
2mm SPACE  
DARK FLAW ON BOMB

According to Wood's ledger book, 2¢ Winans' stamps were printed on November 23, 1862; May 11, 1863; June 8, 1864; and February 16, 1866.



# WINANS' CITY POST

## BOGUS A, TYPE A

The lower right corner of the background in type a was broken - on most examples it is retouched and appears as a darkened area. The O and S of "POST" are printed very close together. In later printings, a dark flaw occurs on the lower center of the bomb.

Additional flaws, variations, and spacing information are noted on individual stamps.



BOGUS A  
TYPE A  
WOODS / HUSSEY  
5¢ BLACK  
ON YELLOW SC  
2mm SPACE  
CONSTANT FLAWS



BOGUS A  
TYPE A  
WOODS / HUSSEY  
2¢ BLACK - DARK  
ON YELLOW SC  
2mm SPACE  
SMALL FLAW ON BOMB



BOGUS A  
TYPE A  
WOODS / HUSSEY  
2¢ BLACK  
ON YELLOW SC  
2mm SPACE  
DARK FLAW ON BOMB

According to Wood's ledger book, 5¢ Winans' stamps were printed on November 23, 1862; February 26, 1864; and February 10, 1865.



BOGUS A  
TYPE A  
WOODS / HUSSEY  
10¢ BLACK  
ON GREEN  
2mm SPACE  
CONSTANT FLAWS



BOGUS A  
TYPE A  
WOODS / HUSSEY  
10¢ BLACK  
ON GREEN  
2mm SPACE  
SMALL FLAW ON BOMB



BOGUS A  
TYPE A  
WOODS / HUSSEY  
10¢ BLACK  
ON GREEN  
2mm SPACE  
DARK FLAW ON BOMB



# WINANS' CITY POST

## BOGUS A, TYPE A

The lower right corner of the background in type a was broken - on most examples it is retouched and appears as a darkened area. The O and S of "POST" are printed very close together. In later printings, a dark flaw occurs on the lower center of the bomb.

Additional flaws, variations, and spacing information are noted on individual stamps.



BOGUS A  
TYPE A  
WOODS / HUSSEY  
10¢ BLACK  
ON GREEN  
2mm SPACE  
DARK FLAW ON BOMB  
DENT OVER 10



BOGUS A  
TYPE A  
WOODS / HUSSEY  
10¢ BLACK  
ON GREEN  
1.5mm SPACE  
BROKEN LR CORNER  
DENT OVER 10



BOGUS A  
TYPE A  
WOODS / HUSSEY  
10¢ BLACK - DARK  
ON GREEN  
2mm SPACE  
RETOUCHED TOP OF E

According to Wood's ledger book, 10¢ and 20¢ Winans' stamps were printed on November 23, 1862; February 26, 1864; and February 10, 1865.



BOGUS A  
TYPE A  
WOODS / HUSSEY  
20¢ BLACK  
ON VERMILION SC  
2mm SPACE  
CONSTANT FLAWS  
RETOUCHED TOP OF E



BOGUS A  
TYPE A  
WOODS / HUSSEY  
20¢ BLACK  
ON VERMILION SC  
2mm SPACE  
DARK FLAW ON BOMB  
MISSING LEFT SIDE OF O



# WINANS' CITY POST

## BOGUS A, TYPE B

Type b has a dented loop on the P of "POST". Like type a, the O and S of "POST" are printed close together. Additional flaws, variations, and spacing information are noted on individual stamps.



BOGUS A  
TYPE B  
WOODS / HUSSEY  
2¢ BLACK - DARK  
ON WHITE H. LAID  
1.5MM SPACE  
CONSISTENT FLAWS



BOGUS A  
TYPE B  
WOODS / HUSSEY  
2¢ BLACK  
ON WHITE H. LAID  
1.5MM SPACE  
RETOUCHED TOP OF E



BOGUS A  
TYPE B  
WOODS / HUSSEY  
2¢ BLACK  
ON WHITE WOVE  
1.5MM SPACE  
CONSISTENT FLAWS



BOGUS A  
TYPE B  
WOODS / HUSSEY  
2¢ BLACK  
ON WHITE WOVE  
2MM SPACE  
DOT UNDER N



BOGUS A  
TYPE B  
WOODS / HUSSEY  
2¢ BLACK  
ON WHITE WOVE  
2MM SPACE  
SMALL DENT OVER 2



BOGUS A  
TYPE B  
WOODS / HUSSEY  
2¢ BLACK  
ON WHITE WOVE  
2MM SPACE  
LARGER DENT OVER 2

According to Wood's ledger book, 2¢ Winans' stamps were printed on November 23, 1862; May 11, 1863; June 8, 1864; and February 16, 1866.



# WINANS' CITY POST

## BOGUS A, TYPE B

Type b has a dented loop on the P of "POST". Like type a, the O and S of "POST" are printed close together. Additional flaws, variations, and spacing information are noted on individual stamps.



BOGUS A  
TYPE B  
WOODS / HUSSEY  
5c BLACK  
ON YELLOW SC  
1.5mm SPACE  
CONSISTENT FLAWS



BOGUS A  
TYPE A  
WOODS / HUSSEY  
5c BLACK - DARK  
ON YELLOW SC  
1.5mm SPACE  
CONSISTENT FLAWS



BOGUS A  
TYPE A  
WOODS / HUSSEY  
5c BLACK - FAINT  
ON YELLOW SC  
2mm SPACE  
DENT OVER 5



BOGUS A  
TYPE A  
WOODS / HUSSEY  
10c BLACK  
ON GREEN  
1.5mm SPACE  
CONSISTENT FLAWS



BOGUS A  
TYPE A  
WOODS / HUSSEY  
10c BLACK  
ON GREEN  
2mm SPACE  
SMALL DENT OVER 0



BOGUS A  
TYPE A  
WOODS / HUSSEY  
10c BLACK  
ON GREEN  
1.5mm SPACE  
LARGER DENT OVER 0  
BROKEN LR CORNER

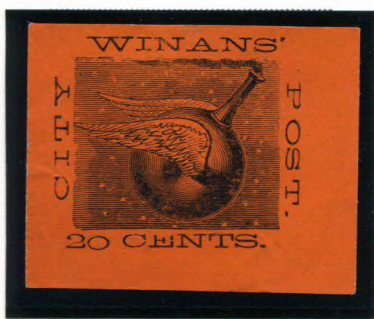
According to Wood's ledger book 5c and 10c Winans' stamps were printed on November 23, 1862; February 26, 1864; and February 10, 1865.



# WINANS' CITY POST

## BOGUS A, TYPE B

Type b has a dented loop on the P of "POST". Like type a, the O and S of "POST" are printed close together. Additional flaws, variations, and spacing information are noted on individual stamps.



BOGUS A  
TYPE B  
WOODS / HUSSEY  
20¢ BLACK  
ON VERMILION SC  
1.5mm SPACE  
0 IS LOWER THAN 2  
BREAK IN TOP OF  
BACKGROUND



BOGUS A  
TYPE B  
WOODS / HUSSEY  
20¢ BLACK  
ON VERMILION SC  
1.5mm SPACE  
0 IS LOWER THAN 2  
BREAK IN TOP OF  
BACKGROUND



BOGUS A  
TYPE B  
WOODS / HUSSEY  
20¢ BLACK  
ON VERMILION SC  
2mm SPACE  
2 AND 0 ARE LEVEL  
TOP OF BACKGROUND  
IS UNBROKEN

According to Wood's ledger book 20¢ Winans' stamps were printed on November 23, 1862; February 26, 1864; and February 10, 1865.



# WINANS' CITY POST

## BOGUS A, TYPE C

Type c has a white flaw on the bomb, directly under the wing, which can appear as a vertical line, or as a round shape. The letters in "POST" are spaced evenly, and the apostrophe after "WINANS" is thick..

Additional flaws, variations, and spacing information are noted on individual stamps.



BOGUS A  
TYPE C  
WOODS / HUSSEY  
2¢ BLACK  
ON WHITE WOVE  
3mm SPACE  
CONSISTENT FLAWS



BOGUS A  
TYPE C  
WOODS / HUSSEY  
2¢ BLACK  
ON WHITE H. LAID  
3.5mm SPACE  
CONSISTENT FLAWS



BOGUS A  
TYPE C  
WOODS / HUSSEY  
2¢ BLACK  
ON WHITE WOVE  
3.5mm SPACE  
CONSISTENT FLAWS



BOGUS A  
TYPE C  
WOODS / HUSSEY  
10¢ BLACK  
ON GREEN  
2mm SPACE  
CONSISTENT FLAWS  
NO TOP ON E



BOGUS A  
TYPE C  
WOODS / HUSSEY  
20¢ BLACK  
ON VERMILION SC  
2mm SPACE  
CONSISTENT FLAWS  
SOLID TOP ON E



BOGUS A  
TYPE C  
WOODS / HUSSEY  
20¢ BLACK  
ON VERMILION SC  
2mm SPACE  
LESS SMOKE UNDER N  
SOLID TOP ON E

According to Wood's ledger book, 2¢ Winans' stamps were printed on November 23, 1862; May 11, 1863; June 8, 1864; and February 16, 1866. The 5¢, 10¢ and 20¢ Winans' stamps were printed on November 23, 1862; February 26, 1864; and February 10, 1865.



# WINANS' CITY POST

## BOGUS A, TYPE D

Type d is identified by the top left serif on the W of "WINANS", which is angled downward. The apostrophe after "WINANS" is significantly thicker than all other types.

Additional flaws, variations, and spacing information are noted on individual stamps.



BOGUS A  
TYPED  
WOODS / HUSSEY  
2¢ BLACK  
ON WHITE V. LAID  
3.5mm SPACE  
CONSISTENT FLAWS



BOGUS A  
TYPED  
WOODS / HUSSEY  
2¢ BLACK - DARK  
ON WHITE H. LAID  
3mm SPACE  
CONSISTENT FLAWS



BOGUS A  
TYPED  
WOODS / HUSSEY  
2¢ BLACK  
ON WHITE H. LAID  
3mm SPACE  
CONSISTENT FLAWS  
-CANCEL MARKINGS-



BOGUS A  
TYPED  
WOODS / HUSSEY  
2¢ BLACK  
ON WHITE WOVE  
2mm SPACE  
DENT UNDER A  
PARTIAL TOP OF E



BOGUS A  
TYPED  
WOODS / HUSSEY  
5¢ BLACK - DARK  
ON YELLOW SC  
3mm SPACE  
DENT UNDER A



BOGUS A  
TYPED  
WOODS / HUSSEY  
5¢ BLACK  
ON YELLOW SC  
3mm SPACE  
DENT UNDER A

According to Wood's ledger book, 2¢ Winans' stamps were printed on November 23, 1862; May 11, 1863; June 8, 1864; and February 16, 1866. The 5¢ Winans' stamps were printed on November 23, 1862; February 26, 1864; and February 10, 1865.



# WINANS' CITY POST

## BOGUS A, TYPE D

Type d is identified by the top left serif on the W of "WINANS", which is angled downward. The apostrophe after "WINANS" is significantly thicker than all other types.

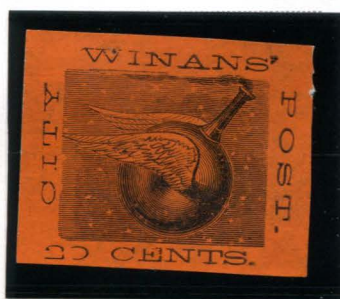
Additional flaws, variations, and spacing information are noted on individual stamps.



BOGUS A  
TYPE D  
WOODS / HUSSEY  
10¢ BLACK  
ON GREEN  
2.5mm SPACE  
BROKEN 0 IN 10



BOGUS A  
TYPE D  
WOODS / HUSSEY  
10¢ BLACK  
ON GREEN  
2.5mm SPACE  
CONSISTENT FLAWS



BOGUS A  
TYPE D  
WOODS / HUSSEY  
20¢ BLACK  
ON VERMILION SC  
3mm SPACE  
BROKEN NUMERAL 20



BOGUS A  
TYPE D  
WOODS / HUSSEY  
20¢ BLACK  
ON VERMILION SC  
3mm SPACE  
FLAW ON LR OF BOMB  
BROKEN NUMERAL 20

According to Wood's ledger book, 10¢ and 20¢ Winans' stamps were printed on November 23, 1862; February 26, 1864; and February 10, 1865.



# WINANS' CITY POST

The stamps were printed in vertical strips of four by arranging the clichés into a setting. Several different arrangements to the setting are known.

## BOGUS A, SETTING 1: D-A-C-B

### **Type d**

Type d is identified by the top left serif on the W of "WINANS", which is angled downward. The apostrophe after "WINANS" is significantly thicker than all other types.

### **Type a**

Type a includes a darkened area in the background at the lower right corner. The O and S of "POST" are printed very close together. There is no dark flaw on the bomb in the early printings of this cliché.

### **Type c**

Type c has a white flaw on the bomb, directly under the wing. The apostrophe is thick.

### **Type b**

Type b has a dented loop on the P of "POST". Like type a, the O and S of "POST" are printed close together.



BOGUS A : TYPES D-A-C-B  
WOODS / HUSSEY  
2¢ BLACK ON WHITE V. LAID  
W/ PAPERMAKER EMBOSSED SEAL



# WINANS' CITY POST

The stamps were printed in vertical strips of four by arranging the clichés into a setting. Several different arrangements to the setting are known.

## BOGUS A, SETTING 1: D-A-C-B



BOGUS A  
TYPES D-A-C-B  
WOODS / HUSSEY  
2¢ BLACK  
ON WHITE V. LAID  
VERTICAL STRIP OF FOUR  
SETTING 1



BOGUS A  
TYPES D-A-C-B  
WOODS / HUSSEY  
2¢ BLACK  
ON WHITE H. LAID  
VERTICAL STRIP OF FOUR  
SETTING 1



BOGUS A  
TYPES A-C-B  
WOODS / HUSSEY  
2¢ BLACK  
ON WHITE WOVE  
VERTICAL STRIP OF THREE  
SETTING 1



# WINANS' CITY POST

The stamps were printed in vertical strips of four by arranging the clichés into a setting. Several different arrangements to the setting are known.

## BOGUS A, SETTING 1: D-A-C-B



BOGUS A  
TYPES D-A-C-B  
WOODS / HUSSEY  
10¢ BLACK - DARK  
ON GREEN  
VERTICAL STRIP OF FOUR  
SETTING 1



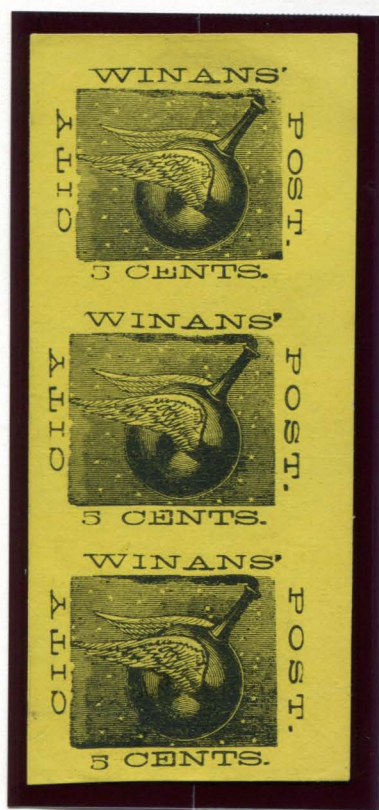
BOGUS A  
TYPES D-A-C-B  
WOODS / HUSSEY  
10¢ BLACK  
ON GREEN  
VERTICAL STRIP OF FOUR  
SETTING 1



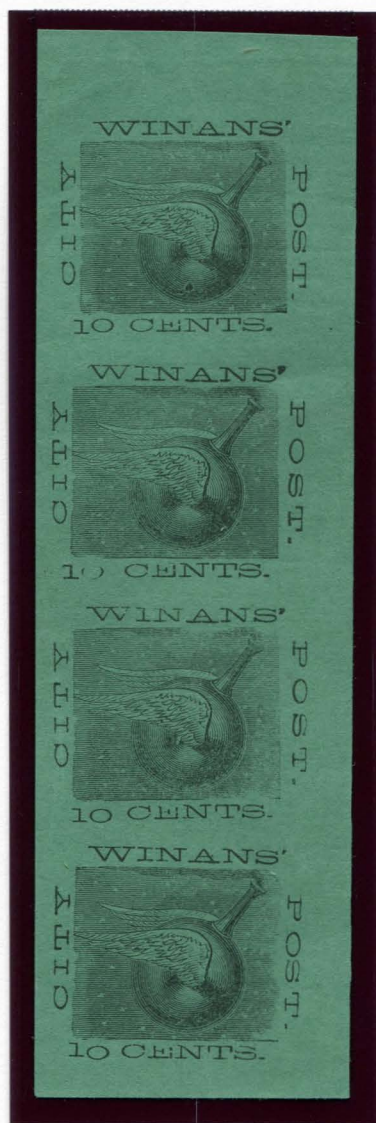
# WINANS' CITY POST

The stamps were printed in vertical strips of four by arranging the clichés into a setting. Several different arrangements to the setting are known.

## BOGUS A, SETTING 2: A-D-C-B



BOGUS A  
TYPES A-D-C  
WOODS / HUSSEY  
5c BLACK - DARK  
ON YELLOW SC  
VERTICAL STRIP OF THREE  
SETTING 2



BOGUS A  
TYPES A-D-C-B  
WOODS / HUSSEY  
10c BLACK  
ON GREEN  
VERTICAL STRIP OF FOUR  
SETTING 2



BOGUS A  
TYPES A-D-C-B  
WOODS / HUSSEY  
20c BLACK  
ON VERMILION SC  
VERTICAL STRIP OF FOUR  
SETTING 2



# WINANS' CITY POST

The stamps were printed in vertical strips of four by arranging the clichés into a setting. Several different arrangements to the setting are known.

## BOGUS A, SETTING 3: B-A | A-B (TÊTE-BÊCHE)



BOGUS A  
TYPES A-D-C-B  
WOODS / HUSSEY  
5¢ BLACK ON YELLOW SC  
VERTICAL STRIP OF FOUR  
SETTING 3



BOGUS A  
TYPES A-D-C-B  
WOODS / HUSSEY  
20¢ BLACK  
ON VERMILION SC  
VERTICAL STRIP OF FOUR  
SETTING 3



# WINANS' CITY POST

Winans' Bogus B design was printed by S. Allan Taylor. Taylor first lists the Winan's [sic] City Post stamps for sale in the January 1867 issue of his *Stamp Collector's Record*, offering a set of four stamps for 5¢.

Bogus B has no period after "POST" and an apostrophe with a flat top after "WINANS". The design is surrounded by a thin rectangular border with the top left corner pointing upward and a break above the "Y" in "CITY". The presence of this border implies that Taylor probably based his bogus design on an early Moens print.



BOGUS B  
TAYLOR  
2¢ BLACK  
ON GREEN SC (SHADE)



BOGUS B  
TAYLOR  
2¢ BLACK  
ON GREEN SC (SHADE)



BOGUS B  
TAYLOR  
5¢ BLACK  
ON WHITE



BOGUS B  
TAYLOR  
10¢ BLACK  
ON ORANGE SC



BOGUS B  
TAYLOR  
20¢ BLACK  
ON DEEP PINK SC



BOGUS B  
TAYLOR  
20¢ BLACK  
ON DULL GREEN SC



BOGUS B  
TAYLOR  
20¢ BLACK  
ON LIGHT BLUE SC

Bogus B (above) is printed with the value in small numerals. A second Taylor bogus, Bogus B<sub>1</sub>, uses the same design, but is printed with large numerals.



# WINANS' CITY POST

Bogus B1 was printed by Taylor, using the same design as Bogus B, but with larger numerals.



BOGUS B1  
TAYLOR - FORM 13  
10¢ BLACK  
ON SCARLET SC



BOGUS B1  
TAYLOR - FORM 13  
10¢ BLACK  
ON YELLOW SC



BOGUS B1  
TAYLOR - FORM 15  
10¢ ULTRAMARINE  
ON WHITE H. LAID



BOGUS B1  
TAYLOR - FORM 15  
10¢ ULTRAMARINE  
ON WHITE V. LAID



BOGUS B1  
TAYLOR - FORM 15  
10¢ BLACK  
ON WHITE V. LAID



BOGUS B1  
TAYLOR - FORM 15  
10¢ BLACK  
ON ORANGE BUFF



BOGUS B1  
TAYLOR - FORM 15  
10¢ BLACK  
ON VIOLET BLUE



BOGUS B1  
TAYLOR - FORM 15  
10¢ BLACK  
ON GRAY GREEN



# WINANS' CITY POST



BOGUS B1  
TAYLOR - FORM AA5  
10¢ BLACK  
ON WHITE  
W/ QUILTED OVERPRINT



BOGUS B1  
TAYLOR - FORM AA5  
10¢ BLACK  
ON GREEN SC



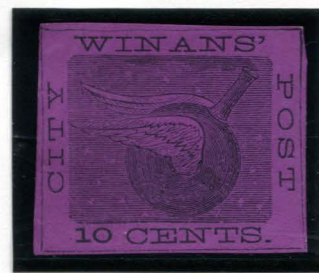
BOGUS B1  
TAYLOR - FORM AA5  
10¢ BLACK  
ON VERMILION SC



BOGUS B1  
TAYLOR - FORM AA5  
10¢ BLACK  
ON LAVENDER SC



BOGUS B1  
TAYLOR - FORM AA5  
10¢ BLACK  
ON VIOLET SC



BOGUS B1  
TAYLOR - FORM AA5  
10¢ BLACK  
ON PURPLE SC

The 10¢ Bogus B1 stamps that Taylor printed in form AB1 include a printing variation - the top serif on the 1 in "10" is missing.



BOGUS B1  
TAYLOR - FORM AB1  
10¢ BLACK  
ON GOLD YELLOW



BOGUS B1  
TAYLOR - FORM AB1  
10¢ BLACK  
ON PEACH



BOGUS B1  
TAYLOR - FORM AB1  
10¢ BLACK  
ON PINK



# WINANS' CITY POST

The 10¢ Bogus B1 stamps that Taylor printed in form AB1 include a printing variation - the top serif on the 1 in "10" is missing.



BOGUS B1  
TAYLOR - FORM AB1  
10¢ BLACK  
ON GRAY



BOGUS B1  
TAYLOR - FORM AB1  
10¢ BLACK  
ON BLUE



BOGUS B1  
TAYLOR - FORM AB1  
10¢ BLACK  
ON GREEN



BOGUS B1  
TAYLOR - FORM AB7  
10¢ BLACK  
ON OFF-WHITE



BOGUS B1  
TAYLOR - FORM AB7  
10¢ BLACK  
ON YELLOW

Featured below are Bogus B1 stamps with the top of the 1 in "10" is partially gone. This variation occurred on 10¢ Winans' stamps printed from Taylor's form AB13. The progressive nature of this flaw indicates that Form AB13 was likely printed before Form AB1 (in which the top of the 1 is completely gone.)



BOGUS B1  
TAYLOR - FORM AB13  
10¢ BLACK  
ON DULL ORANGE SC



BOGUS B1  
TAYLOR - FORM AB13  
10¢ BLACK  
ON PINK VIOLET SC



# WINANS' CITY POST

The thin borderline on Bogus B1 stamps printed from Form S2 have breaks all around, no just above the Y in "CITY"



BOGUS B1  
TAYLOR - FORM S2  
10c BLACK  
ON YELLOWISH LAID



BOGUS B1  
TAYLOR - FORM S2  
10c BLACK  
ON SALMON LAID  
W/ RULED BACK



BOGUS B1  
TAYLOR - FORM S2  
10c BLACK  
ON SALMON LAID



BOGUS B1  
TAYLOR - FORM S2  
10c BLACK  
ON SALMON LAID  
W/ RULED BACK



BOGUS B1  
TAYLOR - FORM S2  
10c BLACK  
ON ORANGE BUFF



BOGUS B1  
TAYLOR - FORM S11  
10c BLACK  
ON YELLOW LAID



BOGUS B1  
TAYLOR - FORM S11  
10c BLACK  
ON GRAYISH

The Bogus B1 stamps below show the same border flaws as those printed on Form S2, but are not yet attributed to any specific form.



BOGUS B1  
TAYLOR  
10c BLACK  
ON WHITE



BOGUS B1  
TAYLOR  
10c BLACK  
ON GRAY VIOLET SC



BOGUS B1  
TAYLOR  
10c BLACK  
ON GREEN SC



BOGUS B1  
TAYLOR  
10c BLACK  
ON VERMILION SC



# WINANS' CITY POST

These 10¢ Bogus B1 stamps have a dent in the background of the central design, located above the "10". The flaw is larger on the stamps printed on laid paper.



BOGUS B1  
TAYLOR  
10¢ BLACK  
ON RED SC



BOGUS B1  
TAYLOR  
10¢ BLACK  
ON PEACH SC



BOGUS B1  
TAYLOR  
10¢ BLACK  
ON PINK V. LAID



BOGUS B1  
TAYLOR  
10¢ BLACK  
ON PINK H. LAID

This variation on Bogus B1 is the same design, but with one additional star in the background, located directly to the left of the T in "POST".



PHOTOCOPY OF  
BOGUS B1 VAR  
WITH ADDITIONAL  
STAR CIRCLED



BOGUS B1 VAR  
TAYLOR  
10¢ BLACK  
ON WHITE



BOGUS B1 VAR  
TAYLOR  
10¢ BLACK  
ON CREAM



# WINANS' CITY POST



BOGUS B1  
TAYLOR - FORM AA9  
20¢ BLACK  
ON PALE PURPLE SC



BOGUS B1  
TAYLOR - FORM AA9  
20¢ BLACK  
ON VIOLET PINK SC



BOGUS B1  
TAYLOR - FORM AA9  
20¢ BLACK  
ON PINKISH SC



BOGUS B1  
TAYLOR - FORM AA9  
20¢ BLACK  
ON BLUE SC



BOGUS B1  
TAYLOR - FORM AA9  
20¢ BLACK  
ON NAVY BLUE SC



BOGUS B1  
TAYLOR - FORM AA9  
20¢ BLACK  
ON BRIGHT NAVY SC



BOGUS B1  
TAYLOR - FORM AA9  
20¢ BLACK  
ON YELLOW SC



# WINANS' CITY POST

The printer of Bogus C is currently unknown. This bogus is identified by an apostrophe after "WINANS"; a small flaw within the branches of the Y in "CITY"; a dash-shaped period after "POST" and "CENTS"; no serif on the center arm of the E in "CENTS"; and stars directly above the front wing tip and directly below the back wing tip.



BOGUS C  
2¢ BLACK  
ON CREAM



BOGUS C  
2¢ BLACK  
ON YELLOW SC



BOGUS C  
2¢ BLACK  
ON DARK GREEN



BOGUS C  
2¢ BLACK  
ON WHITE



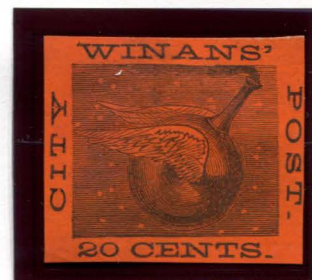
BOGUS C  
2¢ BLACK  
ON ORANGE SC



BOGUS C  
5¢ BLACK  
ON YELLOW SC



BOGUS C  
10¢ BLACK  
ON DULL GREEN



BOGUS C  
20¢ BLACK  
ON ORANGE SC



# WINANS' CITY POST

Vertical pairs of this Bogus C exist in both regular and tête-bêche layouts.



BOGUS C  
2¢ BLACK  
ON DARK GREEN  
VERTICAL PAIR



BOGUS C  
2¢ BLACK  
ON YELLOW SC  
VERTICAL PAIR  
TÊTE-BÊCHE

The Winans' stamps below have the same characteristics as Bogus C, but are poorly printed. They appear to be more modern reprints of the Bogus C design.



BOGUS C VAR  
MODERN REPRINT  
2¢ BLACK  
ON PINK SC



BOGUS C VAR  
MODERN REPRINT  
2¢ BLACK  
ON GREEN SC



# WINANS' CITY POST

The printer of Bogus D is currently unknown. This design is identified by the long bottom serifs of the A in "WINANS" - completely connected the "NAN". This bogus also crosses the middle point of the W in "WINANS", so that it looks like two overlapped Vs.

Bogus D is only known in a 5¢ value. The numeral shifted during printing, and can be printed either low or high. There is an apostrophe after "WINANS" and dash-like periods after "POST" and "CENTS".



BOGUS D  
5¢ BLACK  
ON YELLOW SC  
MIDDLE 5



BOGUS D  
5¢ BLACK  
ON YELLOW SC  
HIGH 5



BOGUS D  
5¢ BLACK  
ON YELLOW SC  
LOW 5



# WINANS' CITY POST

Bogus E has been attributed to J.B. Moens, due to its inclusion in his *Catalogue Prix-Courant De Timbre-Poste* circa 1883. However, this design was published in *The Stamp-Collector's Magazine* (by E. Marlborough & Co. of London) in 1863 - during which time Moens was using the Bogus N design for his publications.



ILLUSTRATION FROM  
THE STAMP-COLLECTOR'S  
MAGAZINE, 1863  
(BOGUS E)



ILLUSTRATION FROM  
CATALOGUE DE  
TIMBRE-POSTE, 1883  
(BOGUS O)

Moens probably received the die used for the Marlborough illustration some years later. The rough quality of Moens's printing implies the die had been used heavily before he acquired it. This damaged version is classified as Bogus O.

Bogus E is identified by the numeral 20, which is placed significantly to the left, extending about 2mm past the vignette background. The serif on the bottom of the 2 is tall and usually slightly curved. This bogus is only known in the 20¢ value. The design has a vertical line for an apostrophe after "WINANS"; no period after "POST"; and a dash-like period after "CENTS".



BOGUS E  
FROM MARLBOROUGH  
20¢ BLACK  
ON BLUE



BOGUS E  
FROM MARLBOROUGH  
20¢ BLACK  
ON PALE GRAY



BOGUS E  
FROM MARLBOROUGH  
20¢ BLACK  
ON PALE PINK



# WINANS' CITY POST



BOGUSE  
FROM MARLBOROUGH  
20¢ RED  
ON BUFF



BOGUSE  
FROM MARLBOROUGH  
20¢ RED  
ON FAWN



BOGUSE  
FROM MARLBOROUGH  
20¢ RED  
ON LIGHT PURPLE



BOGUSE  
FROM MARLBOROUGH  
20¢ RED  
ON PALE YELLOW



BOGUSE  
FROM MARLBOROUGH  
20¢ RED  
ON YELLOW



BOGUSE  
FROM MARLBOROUGH  
20¢ PURPLE  
ON PINK

Note the small break in the background directly to the right of the C in "CITY" in the purple on pink stamp above. This stamp was probably from a later printing. This break is also present, but larger, in Bogus O.



# WINANS' CITY POST

The printer of Bogus F is unknown. This design is known in 2¢, 5¢, and 10¢ values. On the 2¢ value, the numeral 2 is drawn with a closed loop.

This bogus can be identified by the wings - the tip of the front wing extends past the border toward the T in "CITY", and the tip of the far wing points upward above the Y in "CITY". The background makes a dark bar over the S of "CENTS". These stamps have no apostrophe after "WINANS", no period after "POST", and a period after "CENTS". The design is surrounded by a thin, rectangular border.



BOGUS F  
2¢ BLACK  
ON WHITE

Bogus G is another unattributed design. It appears to be based on Bogus C, with the same central illustration (all stars in the same positions). The printing is crude, and the P in "POST" is particularly sloppy. The bottom "10 CENTS" text is in a different font, with more triangular serifs. It is only known in the 10¢ value.

This design includes an apostrophe after "WINANS", a dash-like period after "POST", and no period after "CENTS".



BOGUS G  
10¢ BLACK  
ON GREEN SC  
POOR IMPRESSION



BOGUS G  
10¢ BLACK  
ON GREEN SC  
INTENSE IMPRESSION



# WINANS' CITY POST

Bogus H was produced by J.W. Scott. The design was used as an illustration in early Scott stamp albums, and was also used by C.H. Coster in his book *The United States Locals and Their History*.

This bogus is easily identified by the lack of smoke coming from the fuse of the bomb. The background curves inward slightly to the right of the C in "CITY" and the top right corner is cut off at an angle. There is an apostrophe after "WINANS", and dash-shaped periods after "POST" and "CENTS".

Bogus H is known in four denominations, each printed on a different color.



BOGUS H  
SCOTT  
2¢ BLACK  
ON WHITE



BOGUS H  
SCOTT  
5¢ BLACK  
ON YELLOW SC



BOGUS H  
SCOTT  
10¢ BLACK  
ON GREEN (SHADE)



BOGUS H  
SCOTT  
10¢ BLACK  
ON GREEN (SHADE)

Show below are two 20¢ value Bogus H, stamps, on showing a clear printing variation. A small line is printed directly to the left of the T in "CITY".



BOGUS H  
SCOTT  
20¢ BLACK  
ON VERMILION SC



BOGUS H VAR  
SCOTT  
20¢ BLACK  
ON VERMILION SC  
LINE OVER "T"



# WINANS' CITY POST

The creator of Bogus I is unknown. It is very similar to the design Hussey sold (Bogus A), but there are less stars in the background. It is known in 2¢, 5¢, and 20¢ values.

This bogus is identified by the apostrophe after "WINANS", which looks like a tiny numeral 7. There is a large dent in the left border of the background, directly to the right of the IT in "CITY". There are dash-like periods after "POST" and "CENTS".



BOGUS I  
2¢ BLACK  
ON WHITE



BOGUS I  
5¢ BLACK  
ON YELLOW SC



BOGUS I  
20¢ BLACK  
ON VERMILION SC



# WINANS' CITY POST

The creator of Bogus J is unknown. This design is identified by its short, stubby wings with broad, individual feathers. This design also has a thin outline around the subject background. The text is in a font with broad serifs, including a serif on the top of the A in "WINANS". There is no apostrophe after "WINANS", no period after "POST", and a small period after "CENTS."

These bogus stamps are printed in four values, in a variety of colors.



BOGUS J  
2¢ BLACK  
ON WHITE



BOGUS J  
5¢ ORANGE  
ON WHITE



BOGUS J  
10¢ GREEN  
ON WHITE



BOGUS J  
10¢ YELLOW-GREEN  
ON WHITE



BOGUS J  
10¢ ORANGE  
ON WHITE



BOGUS J  
10¢ PINK  
ON WHITE



BOGUS J  
10¢ PURPLE  
ON WHITE



# WINANS' CITY POST



BOGUS J  
20¢ BLUE-GREEN  
ON WHITE



BOGUS J  
20¢ GREEN  
ON WHITE



BOGUS J  
20¢ YELLOW-GREEN  
ON WHITE



BOGUS J  
20¢ RED  
ON WHITE



BOGUS J  
20¢ GRAY-BLUE  
ON WHITE



BOGUS J  
20¢ BLUE-GRAY  
ON WHITE



# WINANS' CITY POST

Bogus K is based on the illustration published by Moens in his 1864 catalogue. The bogus was designed by Moen's lithographer, Pierre Schmitz.

This design is identified primarily by the word "POST", which is written with a long loop on the P; a long, oval-like O; and the T spaced further away from the other letters. The far wing tip points upward toward the right branch of the Y in "CITY". Like Bogus N (the Moens catalogue illustration), this bogus has a thin frame line around the entire design.

The lower-left edge of the background is damaged and appears faded, and the stars in the background are difficult to see. This, and the missing apostrophe after "WINANS", indicate that these bogus stamps were made with an older, worn-out version of the Moens illustration die. Bogus K is known in four denominations.

These bogus stamps have no no period after "POST", and a very small period after "CENTS". They are printed in a variety of colors, including metallic gold.



BOGUS K  
2¢ BLACK  
ON CREAM



BOGUS K  
2¢ BLACK  
ON WHITE



BOGUS K  
2¢ RED  
ON CREAM



BOGUS K  
2¢ LIGHT BLUE  
ON WHITE



BOGUS K  
2¢ GOLD  
ON WHITE



BOGUS K  
2¢ GOLD  
ON GREEN



# WINANS' CITY POST



BOGUS K  
5¢ BLACK  
ON YELLOW SC



BOGUS K  
5¢ BLACK  
ON DEEP YELLOW SC



BOGUS K  
5¢ GOLD  
ON BUFF



BOGUS K  
5¢ BROWN  
ON BUFF



BOGUS K  
5¢ RED  
ON BUFF



BOGUS K  
5¢ GOLD  
ON YELLOW SC



BOGUS K  
5¢ RED  
ON DEEP YELLOW SC



# WINANS' CITY POST



BOGUS K  
10¢ GOLD  
ON GREEN SC



BOGUS K  
20¢ RED  
ON CREAM



BOGUS K  
20¢ RED  
ON BUFF



BOGUS K  
20¢ BLUE  
ON BUFF



BOGUS K  
20¢ BLACK  
ON LAVENDER SC



BOGUS K  
20¢ GOLD  
ON RED SC



# WINANS' CITY POST

Bogus L is another unattributed design. This bogus is identified by the broken bottom on the C in "CENTS", the thin loop on the P in "POST", and the broken foot of the 2 in the numeral "20".

This bogus is only known in the 20¢ value. There is a short line-shaped apostrophe after "WINANS", no period after "POST", and a short dash-like period after "CENTS".



BOGUS L  
20¢ BLACK  
ON CREAM



BOGUS L  
20¢ BLACK  
ON YELLOW SC



BOGUS L  
20¢ BLACK  
ON GREEN SC



BOGUS L  
20¢ BLACK  
ON YELLOW



BOGUS L  
20¢ BLACK  
ON PURPLE



BOGUS L  
20¢ BLACK  
ON GREEN



# WINANS' CITY POST

Although the maker of Bogus M is unknown, it is probably French in origin. This design features short wings on the bomb. If the background is printed clearly enough, 22 stars can be counted in the background: 6 above the bomb, 6 to the left and below, and 10 to the right. The top left corner of the background extends to the left in a point.

The top serif of the S in "WINANS" is very tall. There is an apostrophe after "WINANS", and rectangular-shaped periods after "POST" and "CENTS". These stamps are known in four denominations.



BOGUS M  
2¢ BLACK  
ON CREAM



BOGUS M  
5¢ BLACK  
ON YELLOW



BOGUS M  
10¢ BLACK  
ON GREEN



BOGUS M  
20¢ BLACK  
ON ORANGE SC

Bogus M is also known with the denomination (numeral and text) inverted.



BOGUS M VAR  
5¢ BLACK  
ON YELLOW  
INVERTED VALUE



BOGUS M VAR  
10¢ BLACK  
ON GREEN  
INVERTED VALUE

# WINANS' CITY POST

Bogus N is based on the illustration Moens published in his 1864 catalogue. This illustration was produced by his lithographer, Pierre Schmitz.

The design is identified by the number and position of stars in the background: three above the far wing, six to the left of the bomb's body, and four to the right of the bomb. The T is spaced further apart from the other letters in "POST".

There is a short, straight apostrophe after "WINANS", no period after "POST", and a period after "CENTS". This bogus is known only in the 10¢ value.



COPY OF ILLUSTRATION FROM  
LES TIMBRES-POSTE ILLUSTRÉS  
J.B. MOENS, 1864  
PLATE 33, DIE 76



BOGUS N  
10¢ BLACK  
ON CREAM

A damaged version of this design was used to create Bogus K.



# WINANS' CITY POST

Boguses P and P<sub>1</sub>, are crude printings of the stamp design, with no shading on the bomb's body. There are curved flaws in the lower right and both upper corners. Bogus P<sub>1</sub> has an additional dark flaw of four thin lines in the upper right corner. Both designs are surrounded by a rectangular border. The printer is unknown.



BOGUS P  
10c BLACK  
ON GREEN



BOGUS P<sub>1</sub>  
10c BLACK  
ON GREEN

Bogus Q is identified primarily by the text "10 CENTS" - the numeral 1 has a long serif top, the bottom serif of the T is broken on the left side, and the S has a flat top. The design is very dark, with the bomb blending into the background. There is no apostrophe after "WINANS", no period after "POST", and a period after "CENTS".



BOGUS Q  
10c BLACK  
ON WHITE



BOGUS Q  
10c BLACK  
ON PINK



BOGUS Q  
10c BLACK  
ON PURPLE