

APRIL 1993

Vol. 3 No. 2

# THE PENNY POST

---

Official Journal Of The Carriers And Locals Society

---



Friends' Boarding School coach linked mail and students to the outside world.

---

## INSIDE THIS ISSUE

---

FRIENDS' BOARDING SCHOOL

CITY DESPATCH POST — FINAL PHASE

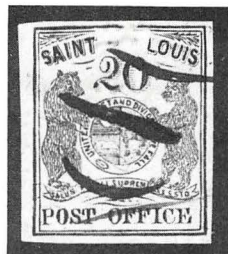
HALE & CO. FORGERIES

CARNES BIG BEAR STAMP MYSTERY

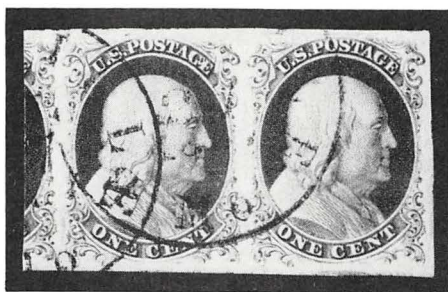
COPING WITH MESSENKOPES

---

## RICHARD WOLFFERS AUCTIONS, INC.



USA: 1845 20c St.  
Louis Bear Provisional  
on greenish paper



USA: 1851 1c blue, Type IIIa,  
Horizontal pair

**Whether it's buying or selling . . .  
in the West, it's Wolffers!**

RICHARD WOLFFERS AUCTIONS, INC.  
133 KEARNY STREET, SUITE 400  
SAN FRANCISCO, CALIFORNIA 94108  
PHONE 415-781-5127  
FAX 415-956-0483

# THE PENNY POST



Vol. 3 No. 2

APRIL 1993

(C)1993, The Carriers And Locals Society

---

Official Journal Of The Carriers And Locals Society

---

Published quarterly in January, April, July and October.  
Price per issue: \$8.50 for members, \$10 for non-members.

## CONTENTS

Editor's and President's Messages .....	Pages 2-3
Friends' Boarding School, By William Ullom.....	Pages 4-14
Society News, Adlets and Honor Roll .....	Page 15
City Despatch Post, Part V, By Scott R. Trepel .....	Pages 18-22
The Forgeries of Hale & Co., By Richard Schwartz .....	Pages 23-25
Carnes' Big Bear Stamp Controversy, By Gordon Stimmell .....	Pages 26-28
Coping With Messenkopes, By Gordon Stimmell .....	Pages 29-31

## OFFICERS OF THE SOCIETY

**Editor:** Gordon Stimmell .....P.O.Box 184, 260 Adelaide St.E., Toronto, Canada  
**President:** Steven Roth.....1233 20th St. N.W., Washington, DC 20036  
**Treasurer:** Martin Richardson .....Box 1574, Dayton, OH 45401  
**Secretary:** William T. Crowe ..... P.O.Box 2090, Danbury, CT 06813  
**Advertising Manager:** Richard Frajola .....P.O. Box 608, Empire CO 80438

## DIRECTORS

William Crowe, Richard Frajola, Richard Friedberg,  
Helen Galatan-Stone, Donald Johnstone, Martin Richardson,  
Steven Roth, Byron Sandfield, Richard Schwartz, Gordon Stimmell.



# FROM THE EDITOR

**J**udging by recent major sales of locals and carriers, the market for this specialized area remains intense for rare top quality items, a good indice for investment potential even in the throes of recession. The commoner items remain accessible, enabling modest collectors whose pockets are not lined with gold (like me) to maintain interest in the field despite soaring prices for true rarities.

I must admit there does seem to be a somewhat diabolical relationship between doing an article on a particular post and the subsequent sales of items relating to that post. An illuminating article whets interest, and accessibility and prices rocket right out the window. This naturally makes me want to collect all I can on any post before doing an article. This is a shame, but not new: It's a truism of publicizing areas hitherto cloaked in mystery.

Speaking of altering history, please note that this Society has formed a Scott Catalogue Review Committee to feed data to the Scott folks on U.S. carriers. The aim is to help bring the Specialized Carriers section into the 21st century via accumulated wisdom and discoveries and to rectify long-standing errors. Please see the notice on Page 15 explaining how you too can help by contributing your unique knowledge.

Ultimately, the Society will form a similar committee for the Locals section, an even more daunting task in terms of multitude of posts, outdated and misleading illustrations and ancient textual errors. We'll see how smoothly the more straightforward Carriers portion of our appointed task goes first.

This issue of your *Penny Post* leads off with Bill Ullom's comprehensive article on F.B.S., Friends' Boarding School. The illustration in Scott shows only one of three known types of stamp

used by this Ohio "sister" school to Westtown. Ullom has unearthed fresh knowledge from the school vaults on rates and dates that help to provide a revised chronology and understanding of this short-lived Quaker post.

Scott Trepel forges forward with his survey of U.S. Despatch Post based on the outstanding Kapiloff collection. This segment takes us to the end of government control of the post during the changed rate surcharge period, before it reverted to private hands under Abraham Mead and Charles Cole, which will be the focus of his next and final installment in the July issue.

Former Society president Richard Schwartz has graced our pages with a tiny glimpse of important things to come in the projected Hall-Perry book on Independent Mails. The forgeries of Hale & Co. are previewed in these pages I believe for the first time anywhere. Makes me drool for the day the finished book finally comes off the presses.

To fill out the issue I have thrown together a few words on the Carnes Big Bear Stamps, with emphasis on the controversy of their philatelic origin and how to determine originals from reprints. As well, I have cobbled out a few words and photos on Messenkopes in a bid to at last unscramble and augment the transposed photos in Patton's New York Posts book.

And Richard Frajola's Herculean labor, the second part of his comprehensive listing of all genuine stamps and forgeries in our field, graces the *Penny Post* as an insert. Society members are again requested to notify him of anything he may have omitted, as an independent catalogue will result from this series in the future.

There's a lot of new knowledge crammed into a compact space in this issue. Please sit back and enjoy.

— Gordon Stimmell, Editor.



# PRESIDENT'S LETTER

With the publication of the January issue of *The Penny Post*, Richard C. Frajola has commenced his "Carrier and Local Post Catalog" insert which will appear in future issues and, ultimately, will be republished in book form. This effort, along with the column "The Forgery Corner" which is written from time to time by Gordon Stimmell in *The Penny Post*, both serve the very valuable purpose of seeking to overcome the greatest obstacle to collecting in this specialized field — the fear of buying a counterfeit adhesive in lieu of a genuine emission. This concern, of course, is reenforced by the ever rising prices for carriers and locals, both on and off cover.

Richard's and Gordon's effort, which is tedious at best, but surely very gratifying, suffers from an obvious, if minor, flaw — at least initially. That is, Richard's loose leaf inserts and Gordon's columns are preaching to the already converted. At least to a limited extent. Until the catalog has been published in book form and has been made available to collectors who are not members of the Society, it will not reach the attention of those who should (or might) most require it — if only as a well justified security blanket. Too, unless Gordon's columns are one day collected and reprinted in book form, the same might be said of these wonderfully informative studies. Let's hope that at some time in the future we can make both the republication of Richard's catalog and the collection in book form of Gordon's forgeries columns two projects to be completed by the Society.

In the meantime, we cannot deny the value of Richard's catalog and Gordon's

columns to those of us — for example, me — who had never before studied the counterfeits and forgeries of the Posts which otherwise interest us.

Indeed, although my provincial interests have kept me collecting and studying the Posts of one city, I have found that now I have been drawn to the emissions of other towns and cities, and have begun to build a general reference collection of the genuine and counterfeit adhesives of other towns. All because I enjoyed reading Richard's and Gordon's publications on the subject. If this phenomena is being replicated by other members, too, it can only be beneficial to our special collecting interest — carriers and locals.

On another note: the Society desperately needs new members. Over fifty (50) former members did not renew this year, although in a few cases we believe this was an oversight. Either Martin Richardson or I will be contacting each former member who did not renew, and we will request that he do so now. But, in the meantime, we should each try to solicit other new members.

Please take copies of the Membership Application to shows and offer to give them out. This works especially well when soliciting dealers. Then, drop Marty Richardson a note telling him the name and address of the person to whom you gave the Application, and the date given. If we have not received the Application within one month or so, we will then follow up with a form letter. It might work, so let's try it. A copy of the Application will be coming to each member very soon. Please duplicate it. Please circulate it. Please, too, contact Marty Richardson so that we can follow through.

— Steven Roth, President.

# FRIENDS' BOARDING SCHOOL

Barnesville, Ohio  
1876-1884

By William Ullom

**T**wo Quaker school local posts are known to have existed in the United States. The Westtown School local post was operated from 1853 through 1878 and has been recently described in *The Penny Post*<sup>1,2</sup>. The second was patterned after the Westtown example and was operated by the Friends' Boarding School (FBS) from 1876 until 1884.

## Introduction

**L**ittle has been published regarding the FBS local. The discovery article was published in the Sept. 1940 issue of Scott's *Monthly Journal*<sup>1</sup>, and the local was briefly mentioned again in a history of the Friends' Boarding School (known as Olney Friends School) in 1976<sup>2</sup>.

The following review is intended to reintroduce the FBS local to students of local philately for the first time in more than 50 years. Investigation is slowly proceeding and is based upon fragments of information. Three distinct and largely consistent varieties have been identified. Periods of usage have been postulated for each variety, including a "stampless" period (with respect to the FBS local) representing three differing rate structures.

Much work remains to be done, including an inventory of the known covers. Research is impeded by the scarcity of philatelic material, especially covers with year-dated enclosures, and by the loss of important records in the town of Barnesville, Ohio attributable largely to a disastrous fire in 1895, and further loss of records at

Olney in the fire of 1910.

Year dates referenced in parentheses for covers in this article are conjectural. These year dates are supported by comparison of subject covers to correlative material and are not determined from dated enclosures. Other year dates referenced in this article not in parentheses are supported by dated enclosures.

## School History and Location

**T**he Friends' Boarding School was officially opened Jan. 1, 1876 at the existing rural location nearly two miles east of Barnesville, Ohio in the southeastern portion of the state. The school had originally been opened in 1837 at Mt. Pleasant, Ohio but was reopened in Barnesville as the result of a church schism. Numerous aspects of school administration, curriculum and other protocol were based upon the Westtown example<sup>3</sup>.

The remote location of the school and the long school terms undoubtedly fostered homesickness, and many students sought a cure for this affliction by frequent correspondence to their families. One student related in his Nov. 19, 1877 letter from Olney "I am sitting at a table in the collecting room with one boy on one side and three on the other, Cousin Walter Edgerton next to me, all busily engaged in writing, the most of them writing home, I judge." My visits to Barnesville suggest that many facets of life at Olney are not much different now than they were a century ago.





Figure 1. Last known use from FBS "Stampless Period 1" Nov. 4, 1877.

## Initiation of the Local Post and Rate Structure

**I**n keeping with the Westtown model, Olney was established in a location isolated from such distractions as cities and towns. Barnesville was a farming community reached only by a muddy two mile overland route crossing running streams in summer and burdened by snows in winter<sup>9</sup>. Similar situations characterized the local posts of Westtown, the resort at Glen Haven, New York and the Hopedale Community of Milford, Massachusetts.

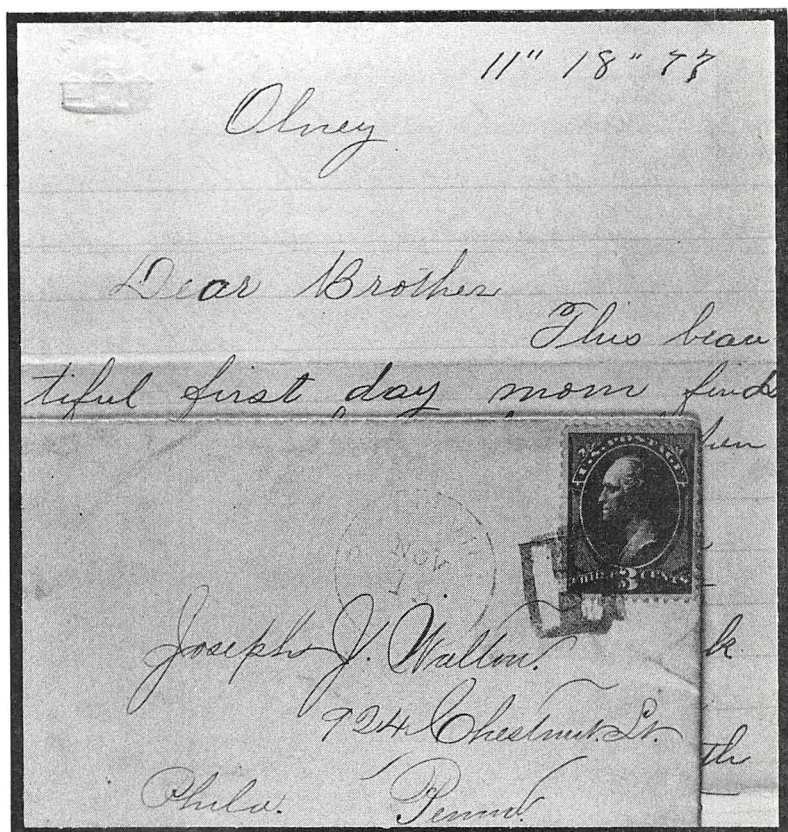
In 1940, Campbell suggested that from the date of opening of Olney, the initial rate for the FBS local post was set at 60 cents per student per session or term.<sup>1</sup> Investigation of the original minutes of the Friends' Boarding School Acting Committee revealed that an initial charge of 50 cents per term was levied on May 30, 1876 via the following entry: "It is concluded to charge each scholar 50 cts for this session to defray the expenses of carrying the mail and other

necessary errands to town"<sup>4</sup>. This discovery was confirmed by review of the original FBS ledger for the period 1876 to 1883. Charges of 50 cents were consistently made on or before Sept. 14, 1876 for "mail" or "postage". In no instance was a teacher or any other person providing service to Olney charged the 50 cent fee. These charges are largely separate and discernable from charges made against student accounts for "postage" in amounts commonly divisible by three (the single letter Post Office rate).

Further review of the Acting Committee minutes for Nov. 6, 1876 revealed a change in rate for the local post service via the entry "on consideration the committee concluded to charge each scholar 30 cts for this session to defray the expenses of carrying the mail, and other errands to town." The FBS ledger again confirms that this policy was followed by numerous 30 cent charges made on March 9, 1877 against the accounts of students enrolled as of Nov. 6, 1876. Again no mail charges were



Figure 2. Early cover from "Stampless Period 2" Nov. 19, 1877, one day after one cent per letter rate came into effect.



made to teachers or other persons providing service to FBS, and the 30 cent charges are largely separate from charges made against student accounts for other "postage". Some entries for "mail" or "mail and indicentals" were made to students on March 9, 1877 in amounts exceeding 30 cents. This suggests that at the time the FBS local post charges were made, vouchers for other postage expenses were entered into the ledger.

The minutes of the Acting Committee make one final mention of the local post on Nov. 6, 1877 as follows: "The mail matter coming into consideration, it is concluded for the Superintendent to charge the scholars one cent each way for their letters for the present session. Postals (post cards) going free."

Adhesive labels (the local post stamps) did not appear immediately. The earliest use of an adhesive label

known to this author is Jan. 11, 1878. Therefore, a "stampless period" with respect to the FBS local post has been identified. Within this "stampless period", archival records identify three rate structures. Covers from this period would be impossible to recognize if it were not for enclosures documenting an Olney origin and/or context relating a possible Barnesville, Ohio cover to the family of an Olney student. Four covers have been discovered which are attributed to the "stampless period" with the rate structure of 30 cents per session, the earliest of which is postmarked July 12, (1877) and the latest is postmarked Nov. 4, 1877 (See Figure 1). All four bear purple Barnesville, Ohio townmarks (without year dates) and negative "H" killers. All four are from the "Cameron FBS correspondence" which spans a period of nearly two and one-half years.



Three covers have been identified from the "stampless period" with the rate system of one cent per letter. This rate is represented by three covers spanning an eight day period. The three covers are dated Nov. 18, 19 and 25, 1877 and are from the second session of 1877. Two of the three covers are from the Cameron correspondence and do not contain dated enclosures. However, the third cover (See Figure 2) mailed to Philadelphia contains a dated enclosure describing school life at Olney, clearly establishing the provenance.

Although modelled on the Westtown system, the FBS local post system departed from the Westtown model of 2 cents per letter. The FBS post also did not follow Westtown in that teachers were not required to pay the local post fee. It is interesting to note that no local post fees were levied at FBS until a time of economic troubles at Olney resulting from cost overruns related to construction of the new school building.

### Issuance of Adhesive Labels and Descriptions of the FBS Stamps

**A**dhesive labels were patterned after the Westtown model with very small, typeset labels adopted.

The earliest date of usage of an FBS stamp known to the author is January 11, 1878. This suggests that usage of the FBS local stamps began on or between Nov. 25, 1877 and Jan. 11, 1878. Three major types of the FBS local have been thus far identified.

**Type I** (Figure 3) is printed in black to grey black on thick, white hard wove paper exhibiting a dark grey-brown fluorescence. The horizontal rectangular format design size is 13 x 8 mm overall. The letters "FBS" are well centered in a frame consisting of dotted lozenges resembling links in a chain. The frame consists of 7 x 3 lozenges. Minor variations exist in the lozenges however these

have not yet been described or studied. The letters FBS are script capitals and each letter is followed by a pronounced oval period. The gum has not been examined on a Type I FBS stamp.

**Type II** (Figure 4) is printed in black on thick, white hard wove paper exhibiting the same dark grey-brown fluorescence as is noted for Type I. The horizontal rectangular format design size is 20 x 10 mm overall. The letters "FBS" are well centered in a frame consisting of dotted lozenges resembling links in a chain. The frame consists of 9 x 4 lozenges. Minor variations exist in the lozenges however these have not yet been described or studied. The letters FBS are italic capitals and each letter is followed by a small round period. The gum is clear and shiny.

**Type III** (Figure 5) is printed in black on thick, white hard wove paper exhibiting the same dark grey-brown fluorescence as is noted for Type I. The horizontal rectangular format design size is 20 x 10 mm overall. The letters "FBS" are well centered in a frame consisting of dotted lozenges resembling links in a chain. The frame consists of 9 x 4 lozenges. Minor variations exist in the lozenges however these have not yet been described or studied. The letters FBS are script capitals and each letter is followed by a pronounced oval period consistent with Type I. The gum is clear and shiny. The size and arrangement of sheets is unknown; no multiples are known to the author.

The stamps are presumed to have been printed locally<sup>1</sup>. At least two print shops existed in Barnesville, Ohio in 1875 and other printers operated in the immediate region. Although Campbell stated that the Hanlong Paper Mills printed the Friends' Boarding School catalogues from 1877 to 1884, examination of the actual catalogues revealed that three printers were awarded catalogue printing contracts during this period. These were the *Barnesville*

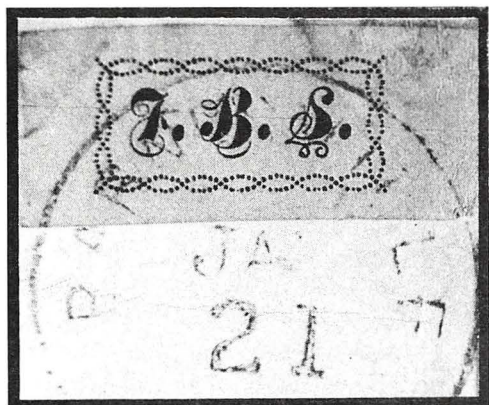


Figure 3. Type I FBS stamp.

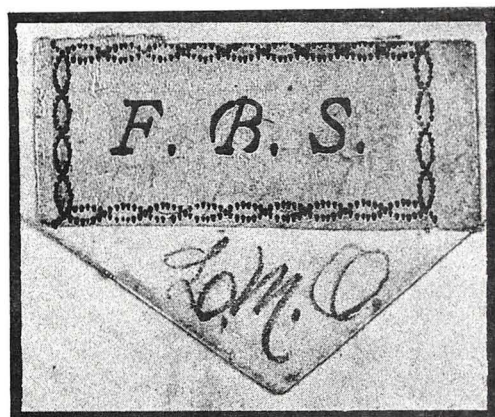


Figure 4. Type II FBS stamp.

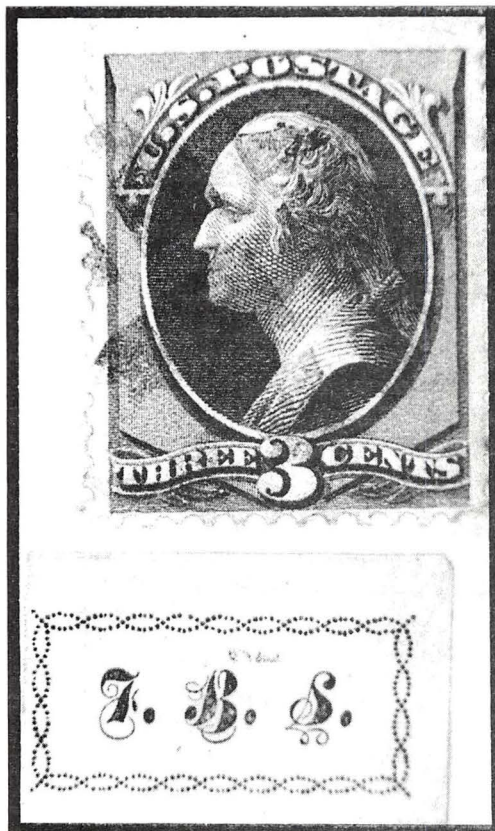


Figure 5. Type III FBS stamp.

*Enterprise* Job Printing Office operated by Ellis Lee (a Westtown graduate), T.T. Hanlon & Sons in Barnesville (later known as Hanlon Bros & Co.) and W.D. Henkle of Salem, Ohio. Also during this period, Republican Steam Job Office Printers of Salem, Ohio produced the Minutes of the yearly Meeting in 1876 and 1877.

Although the ledger for the 1876 to 1883 period was located in the archives, the corresponding journal of accounts for this period has not been located. Other documents must be reviewed, however the likelihood of locating the journal is presumed low, as this document may have been lost in the fire of 1910. Therefore, entries suggesting the actual printer of the FBS stamps have not been found.

In 1940, Campbell located two veteran type setters living in Barnesville who recognized the type face as a font from the Farmer's Foundry in Pittsburgh. Unfortunately, Campbell failed to mention the names or employer(s) of these persons such that it is now impossible without further information to identify which of these two (or some other shop) is the actual printer of the FBS local. A further teaser is the recent discovery of the March 3, 1881 Commencement Announcement which bears the same typeface. The printer did not identify himself on this piece, perpetuating the mystery.

Campbell assumed that the stamps were printed by the Barnesville *Enterprise* because Ellis Lee was a Westtown graduate. It is this author's opinion that



at least some of the stamps were more likely to have been printed by Hanlon. This is because of the eleven FBS catalogues and other documents for which printers are identified in the 1876 to 1884 period, six were printed by Hanlon, two were printed by the *Enterprise*, two were printed by the *Republican* and one was printed by Henkle. It is possible that more than one printer printed the stamps, as is noted from the unique typeface on the Type II stamp and the tendency of the Olney superintendent to change vendors, presumably for reasons of frugality.

No forgeries of the FBS local are known to the author.

## Usage

**A**ll FBS stamps on cover are reported on outgoing mail from Olney. All of this mail bears a Barnesville, Ohio townmark and various cork killers. There is no evidence of use of any of the three types of FBS adhesives on incoming mail to Olney.

Chronology of the three types of FBS locals has been established, however the confidence level of this work could use improvement by means of confirmation covers with year-dated enclosures. It is difficult to establish year dates for covers without dated enclosures because there are no year dates on the Barnesville, Ohio townmark during the period of operation of the FBS local post (as predicted by Murphy's Law, the Barnesville townmark did include the year date in and prior to 1876 and in and after 1886, a period completely exclusive of the operation of the FBS local post). Dates of use are established with medium to high confidence by:

- ★ Comparison of the subject cover with correlative material containing dated enclosures,

- ★ Matching cancellation ink color and details of cork killer,

- ★ Noting earliest dates of use of associated U.S. government issues.

Although the school committee authorized the collection of the 1 cent fee on Nov. 6, 1877, the earliest use known to the author is Jan. 11, 1878 bearing a Type I FBS stamp. The latest known use bears a Type III FBS stamp and is documented to be June 16, 1884. Types I, II and III are numbered in order of usage chronology. No overlap in usage of any one type during a documented usage of another type has been seen. This may be a function of the scarcity of material rather than actual complete consumption of any stamp delivery prior to usage of FBS stamps from a subsequent delivery.

The following chronology has been established at this time.

**Type I:** Prior to Jan. 11, 1878 and after Nov. 25, 1877, until after Dec. 2, 1879 (Figure 6).

**Type II:** Prior to Jan. 10, 1881 until after April 13, 1882 (Figure 7).

**Type III:** Prior to May 5, 1882 until on or after June 16, 1884 (Figure 8).

The post is believed to have ceased operation by Dec. 17, 1888, as evidenced by a cover bearing this date on the townmark and the Friends' Boarding School pre-printed return address (Figure 9).

It has been reported that the FBS stamps were usually affixed to the back of the cover<sup>1,5</sup>. Examination of covers in context of usage periods refutes this statement. Table 1 (on Page 12) suggests that although this was the case at the initiation of the local post, this trend reversed toward the conclusion of the post.

Examination and recording of additional covers will be required to confirm this theory.

On covers observed to date, the FBS local stamps are normally left uncanceled. When placed adjacent to the U.S. government postage stamps, the FBS locals occasionally were cancelled by the Barnesville townmark. Lightly pen



Fig.7 Type II on  
April 13, 1882 cover.

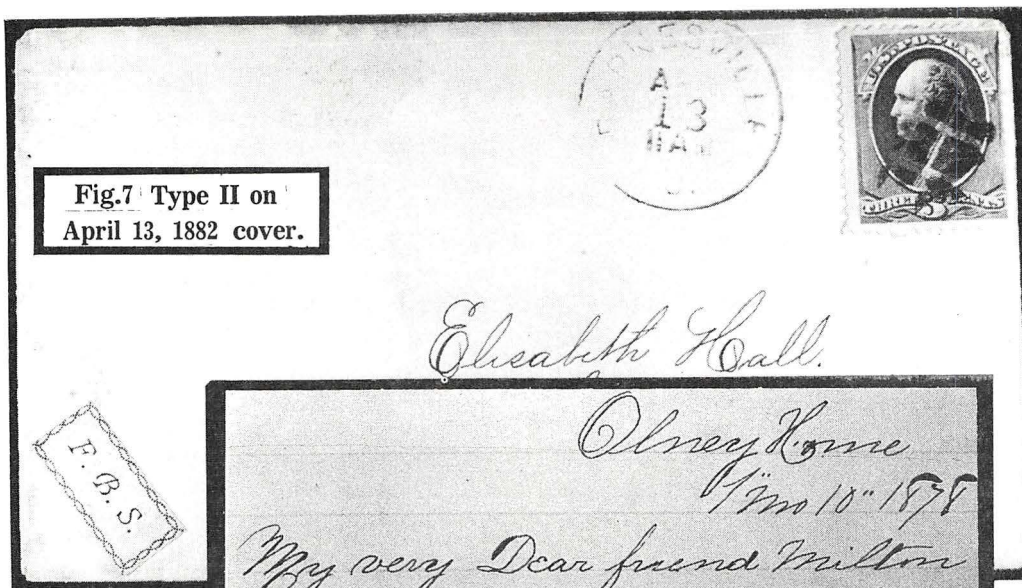


Fig.6 (right).  
Type I on  
Jan. 11, 1878  
cover.

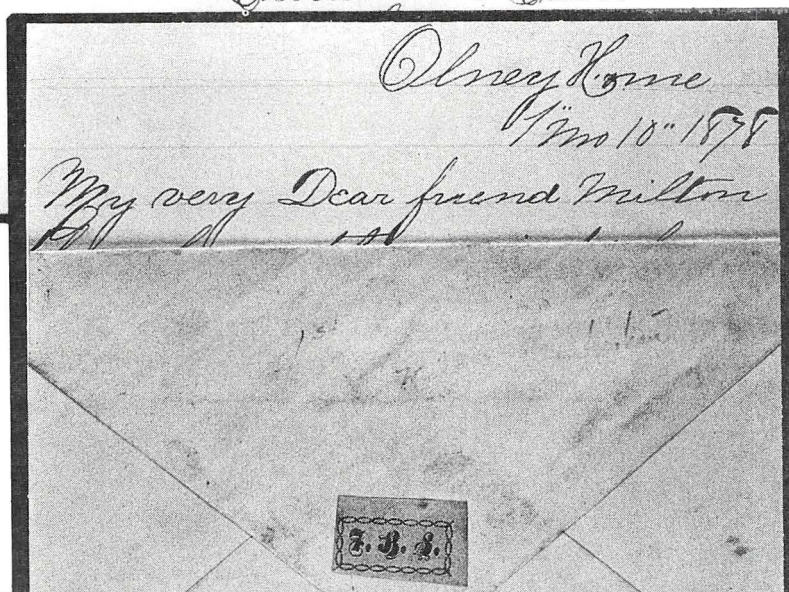
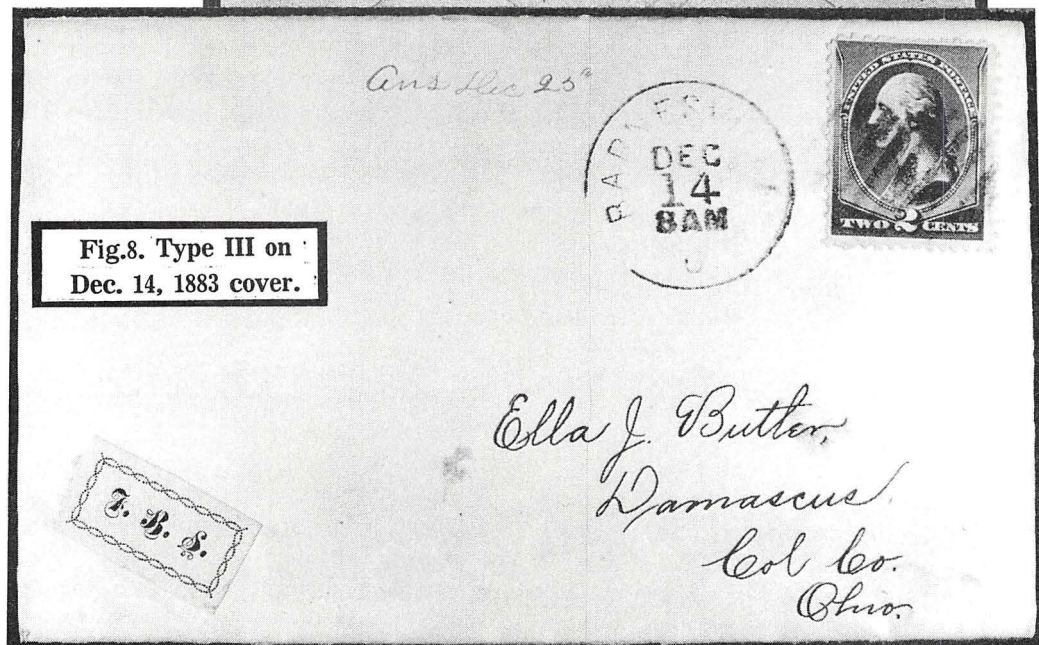


Fig.8. Type III on  
Dec. 14, 1883 cover.





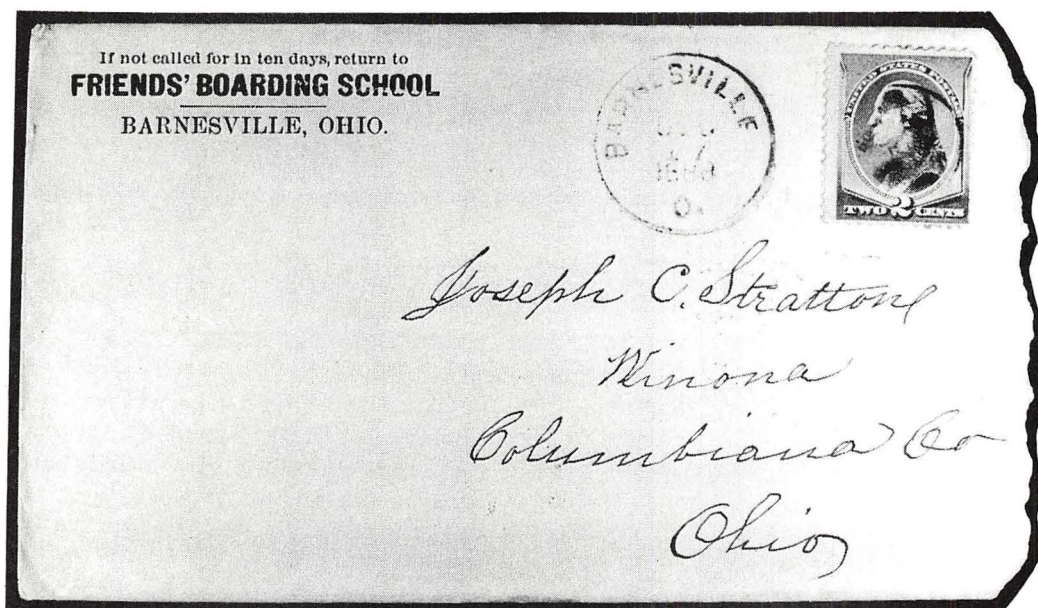


Fig.9:  
Dec. 17, 1888  
Barnesville  
outgoing after  
FBS stamp  
ceased use.

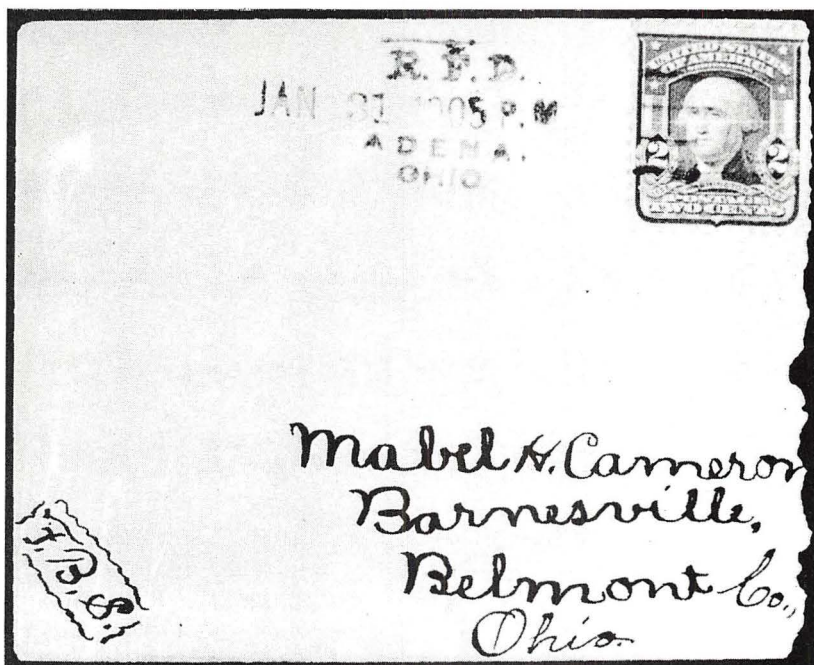


Fig.10:  
Ink sketch on  
Jan. 31, 1905  
cover evokes  
memory of the  
FBS local stamp.

cancelled copies are also reported<sup>1,8</sup>.

FBS, rumored by students of Olney to stand for "fried bread and sorghum", was not only the principal subject of the design of the adhesive labels, but was also the subject of an inscription on one 1905 cover mailed to Barnesville, Ohio from Adena, Ohio (Figure 10). The

memory of the FBS local must have been well preserved in the minds of the students paying the local post fee. Note that the manuscript FBS accurately portrays periods after each letter, includes a similar border and is placed on the face of the cover consistent with the usage trend illustrated in Table 1.



**TABLE 1**  
**Inventory of FBS Covers:**  
**Local Adhesives Affixed Front and Back**

Type	Period Used	On Reverse	On Front	% Affixed to Front
TYPE I	1878 - (1880)	7	1	12%
TYPE II	(1880) - 1882	1	1	50%
TYPE III	1882 - 1884	0	4	100%
Total		8	6	

### Quantities of usage

Campbell made estimates of the quantities of FBS stamps used based upon student enrollment in 1881 and 1882 and assumptions of the frequency of writing home<sup>1</sup>. Campbell's estimate of 7,260 stamps must be viewed with caution. This is largely due to variations in student enrollment over the years, a factor which would tend to lower the estimate. Further, he did

not consider students writing to immensely popular friends like Milton Cameron (the "Cameron correspondence"), a factor which would tend to raise the estimate. Also, we now must consider that the actual quantities of use are some fraction of the total for each of the three types.

School enrollment records for the period 1876 through 1884 have been summarized and reviewed. These are presented in Table 2 below. Summer terms

**TABLE 2**  
**SCHOOL ENROLLMENT FIGURES VERSUS PERIODS**  
**OF USE FOR STAMPLESS POST AND FBS LOCAL POST**

<u>FBS LOCAL PERIOD</u>	<u>TERM</u>	<u>ENROLLMENT</u>
50 cent stampless	1876 summer	20
30 cent stampless	1876-77 winter	68
30 cent stampless	1877 summer	8
Type I FBS local	1877-78 winter	26
Type I FBS local	1878 summer	8
Type I FBS local	1878-79 winter	33
Type I FBS local	1879 summer	16
Type I FBS local	1879-80 winter	22
Type I FBS local	1880 summer	8
Type II FBS local	1880-81 winter	36
Type II FBS local	1881 summer	10
Type II FBS local	1881-82 winter	28
Type II&III FBS local	1882 summer	6
Type III FBS local	1882-83 winter	30
Type III FBS local	1883 summer	9
Type III FBS local	1883-4 winter	29
Type III FBS local	1884 summer	13

(After summer 1884, post presumed discontinued.)



generally represent the months of May through September. Winter terms generally represent the months of November through March.

This data is presented at only a moderate confidence level due to gaps in usage chronology. However, this table is somewhat useful to suggest that Type I may be the most common when compared to Types II or III, and Type II may be the scarcest. These conclusions are supported by noting that a total of 113 tuitions were paid during the documented use period for the Type I stamp. Compare this to 80 tuitions for the period or use of the Type II stamp and a portion of the Type III period, as well as 81 tuitions for the majority of the period of use for the Type III stamp. Take these conclusions with a grain of salt.

### Conclusion

A convenient summary of the findings presented in this discussion follows as Table 3.

**A** notable amount of material may exist that is not recorded. Knowledge of this material may alter or refine this presentation.

A large amount of material has been lost due to the general lack of awareness with regard to these issues in the general philatelic community. A member of our local stamp club in Canton, Ohio clearly remembers discarding at least one FBS local adhesive, believing it to be an initialed "seal". Another member of the same club noted sale of at least one FBS local adhesive on cover with a large lot of 3 cent banknote covers, also noting the belief that the local stamp was merely "some sort of label".

The author respectfully requests any additional information, especially copies of covers, to support or refute the postulations made and refine the facts presented in this article.

### New Scott Catalogue Numbers Are Proposed

A more accurate standard catalogue listing is appropriate in light of these new findings. It is proposed that the three major types be individually listed because of evidence pointing to distinct and mutually exclusive periods of use

**TABLE 3**  
**SUMMARY OF PERIODS OF FBS LOCAL POST**  
**AND TYPES OF FBS LOCAL STAMPS**

TYPE	PERIOD
Stampless Local Post, Charging 50cents Per Session Per Student.	May 6, 1876 through Nov. 6, 1876. (No covers known to author.)
Stampless Local Post, Charging 30cents Per Session Per Student.	Nov. 6, 1876 through Nov. 6, 1877. (4 covers known to author.)
Stampless Local Post, Charging 1cent Per Letter.	Nov. 6, 1877 through (or prior to) Jan. 11, 1878. (3 covers known).
TYPE I FBS Stamp Scott 151L1	(On or prior to) Jan. 11, 1878 through (on or after) Dec. 1, 1879. (8 covers).
TYPE II FBS Stamp Proposed Scott 151L2	(On or prior to) Jan. 10, 1881 through (on or after) April 13, 1882. (2 covers).
TYPE III FBS Stamp Proposed Scott 151L3	(On or prior to) May 15, 1882 through (on or after) June 16, 1884. (4 covers).



and the obvious differences in the designs of the three types. The following catalogue listings are proposed:

Type I..... Existing 151L1  
 Type II..... Proposed Scott 151L2  
 Type III..... Proposed Scott 151L3

FOOTNOTES

- 1). Campbell, John S. Jr. A Newly Discovered U.S. Local. *Scott's Monthly Journal*. Sept. 1940, pp. 236-239.
- 2). Gregg, Arthur B. The Westtown Local. *The Penny Post*. April, 1992, pp. 4-13.
- 3). Metzger, Virginia. Personal communication, October 28, 1990.
- 4). Minutes of the FBS Acting Committee, Stillwater Meeting House, 1876 through 1890.
- 5). *Scott Specialized Catalogue of U.S. Stamps*, 1982. Scott Publishing Co., 1981. 790 pp.
- 6). Stimmell, Gordon. (Westtown) Originals: A Postscript. *The Penny Post*. April, 1992, pp. 14-15.
- 7). Taber, William P. Jr. *Be Gentle, Be Plain*. Celo Press, 1976. 236pp.
- 8). Thomas, Willard. Personal communication, October 31, 1990.
- 9). United States Geological Survey, Barnesville, Ohio 7½' Quadrangle Map.

CORRELATION CHART OF BARNESVILLE OHIO CANCELLATIONS, 1877 – 1883	
1877	
7-12-(1877)	FBS Stampless, Period 1. Purple Town and Negative H
7-24-(1877)	FBS Stampless, Period 1. Purple Town and Negative H
10-29-(1877)	FBS Stampless, Period 1. Purple Town and Negative H
11-04-(1877)	FBS Stampless, Period 1. Purple Town and Negative H
11-18-(1877)	FBS Stampless, Period 2. Purple Town and Negative H
11-19-1877	FBS Stampless, Period 2. Purple Town and Negative H
11-25-(1877)	FBS Stampless, Period 2. Purple Town and Negative H
1878	
1-11-1878	FBS Type I ...Purple Town and Cork Killer (single cross)
1-21-1878	FBS Type I...Purple Town. Stamp Cancelled by Mutilation
2-04-1878	FBS Type I...Purple Town. Stamp Cancelled by Mutilation
2-07- 1878	..... Purple Town and Star
2-25- 1878	..... Purple Town and Star
11-25-(1878)	FBS Type I. Black Town and Cork Killer (maltese cross)
12-02-(1878)	FBS Type I. Black Town and Cork Killer (maltese cross)
12-16-(1878)	FBS Type I. Black Town and Cork Killer (maltese cross)
1879	
4-30-(1879)	FBS Type I. Color (?) Town and Cork Killer (grid)
12-02-(1879)	FBS Type I. Black Town and Cork Killer (single cross)
1881	
1-10- 1881	FBS Type II. Black Town and Cork Killer (single cross)
1882	
4-13-(1882)	FBS Type II. Black Town and Cork Killer (grid)
5-05-1882	FBS Type III. Black Town and Cork Killer (grid)
8-05- 1882	FBS Type III. Black Town and Cork Killer (illegible)
1883	
2-05-1883	FBS Type III. Black Town and Cork Killer (60 grid)
12-14-(1883)	FBS Type III. Black Town and Cork Killer (diagonal stripes)
(Entries are covers known to author as of end of 1992)	



## SCOTT CATALOGUE REVIEW COMMITTEE

A Scott Catalogue Review Committee from this Society has been formed to consider changes to the Carrier Section of the 1993 *U.S. Specialized Catalogue*, including reprints, essays and proofs, for submission to the Scott Publishing Company. The committee solicits your input to any additions, deletions, or changes, including price changes, you consider appropriate. In submitting recommendations, it is necessary to provide sufficient back-up or some hard evidence to support alterations. Good photocopies are sometimes helpful. Price changes must include similar support with, for example, auction sales and prices realized. The committee is comprised of David Golden, Robson Lowe, Robert Meyersburg, Richard Schwartz, and Donald Johnstone, Chairman. Recommendations are to be submitted by June 1, 1993 to Donald Johnstone, 8 Rudgate Road, Colchester, Vermont 05443.

## HONORS LIST

We honor the following members who have generously contributed financial support to the Carriers and Locals Society over and above their basic dues.

### PATRON MEMBER (over \$500)

Thomas C. Mazza

### SUSTAINING MEMBER (\$51 to \$500)

Joseph F. Antizzo  
Richard C. Frajola  
Herbert B. Greene

John P. Halstead  
Carl Walske  
Robert F. Lewis

Steven M. Roth  
Richard Schwartz  
Gordon Stimmell

### CONTRIBUTING MEMBER (\$50)

Tom Adams  
Larry F. Ballantyne  
Rex J. Bates  
David J. Beeby  
Dale Brown  
Henry H. Conland

Kurt Gronowski  
Stephen L. Gronowski  
Michael S. Gutman  
Isidore Handler  
Bruce W. Hazelton  
Walter H. Hoffmann  
Eric Jackson

Donald B. Johnstone  
Ira L. Moss  
Mark Taylor  
T. Lee Pomeroy II  
Martin D. Richardson  
Richard A. Sicking

## SOCIETY WANT ADS

### WANTED

Any material relating to Hale & Co. including covers, stamps, fakes, collateral material, multiple pieces, etc. Mike Gutman, PO Box 926, Framingham, MA 01701.

### WANTED

Will pay top dollar for USA and BNA fantasies. Joseph F. Antizzo, P.O. Box 997, Church Street Station, N.Y. N.Y. 10008. APS 49006.

### WANTED

Priest's Despatch (Scott L238-L239) off-cover, originals & counterfeits to borrow for research on an article for *The Penny Post*. Registered or Certified Mail costs reimbursed. Send to John P. Halstead, 757 Chestnut Hill, E. Aurora N.Y. 14052. Tel: 716-655-1299.

### WANTED

Looking for 1888 Blizzard Mail stamp. Gordon Stimmell, PO Box 184, 260 Adelaide St.E., Toronto, Canada.

If you've never  
thought about selling,  
we'd like to give you  
something to think about.

Several clients have asked us to help them build their collections of carriers and locals.

We've been fortunate to have a good number of choice items in our auctions, but for every buyer there are those eager underbidders looking for more.

So, if selling has been the last thing on your mind, we'd like to give you food for thought.

The market for your collection is better than ever. And so are we.

Please call us. (212) 753-6421.

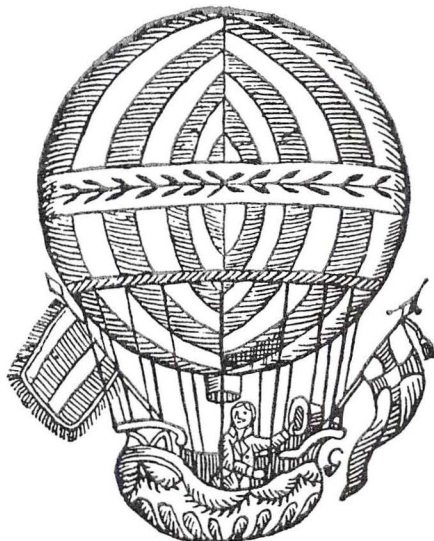
*Robert A. Siegel*  
AUCTION GALLERIES, INC.

For catalogues, sale information or consultation, please feel welcome to write:

Park Avenue Tower, 65 E. 55th St., New York, NY 10022



# RICHARD C. FRAJOLA, INC.



## UNITED STATES POSTAL HISTORY

PRIVATE TREATY SERVICES

PUBLIC AUCTIONS

*Our auction catalogs have received awards as literature, find out by subscribing today. A subscription for the next 5 catalogs, including prices realised after each sale, is \$15.*



**RICHARD C. FRAJOLA, INC.**

**P.O. Box 608  
125 W. Park Ave.  
Empire, CO 80438  
Telephone (303) 569-3241**

# CITY DESPATCH POST

THE DR. LEONARD A. KAPILOFF COLLECTION  
PART FIVE: THE JULY 1845 REFORM PERIOD

A Commentary by Scott R. Trepel

Remarkable events occurred in the period from July 1845 until the U.S. City Despatch Post ceased to exist in late November 1846. This fifth article in the series on Dr. Kapiloff's collection examines the carrier stamps and usages that followed the July 1, 1845, postal reform (by Act of Congress, March 3).

## July 1, 1845 Postal Reform

**N**eedless to say, the July 1 rates of 5c and 10c radically altered the U.S. postal system; in one respect by making possible the use of adhesive postage stamps. Less obvious, but with significant consequences for the U.S. City Despatch Post, was the July 1 increase in the rate for a drop letter. This increase, a measure designed to counter-balance the loss of revenue feared by legislators, placed the U.S. carrier service in New York City in the unenviable position of having the highest prices in town.

A drop letter is one which enters a U.S. post office for delivery to the addressee, but does not travel between that post office and another. The U.S. City Despatch Post carriers did carry intra-city letters directly from the sender to the addressee, without ever entering the post office, but they also handled many drop letters, for which the drop postage had to be paid to the government.

The 1c drop letter rate was an integral part of the 3c charged by the U.S. City Despatch Post prior to July 1845. When the rate increased to 2c, effective July 1, the rate charged for drop mail also increased by 1c. Between July 1845 and November 1846, intra-city letters

delivered to or from the post office by the U.S. City Despatch Post — that is, drop letters — were charged 4c each (2c carrier fee plus 2c drop rate). The increase did not affect non-drop mail; thus, a letter carried by the U.S. City Despatch Post, without entering the post office, was charged 3c (1c to the government). The same 3c rate applied to letters collected for delivery to an out-of-town post office (again, 1c to the government).

In this period one finds far fewer surviving covers to which the carrier-plus-drop rate (4c) would have applied. Without doubt, the U.S. City Despatch Post observed the same statistical decline. Faced with intense competition from local posts, such as Boyd's, the U.S. City Despatch Post could hardly maintain its market share after the increase in rates. Simple economics forced the operation into decline, and, in late November 1846, the service was terminated as a government-owned enterprise.

## New York Provisional Combinations

**T**he Kapiloff collection contains a famous cover, dating from this post-July 1845 period, which combines the 3c carrier stamp with the New York 5c postmaster's provisional (see Figure 1). Only the front panel of the





**Figure 1. U.S. City Despatch Post/New York Provisional combination to Holland (Perry, One Hundred Years Ago).**

original lettersheet remains, but it is addressed to Holland via Boston and shows enough markings to confirm the usage. Both stamps are tied by the "New-York 5 cts/13 Nov" integral rate circular datestamp in red. The carrier stamp is also tied by manuscript cross-hatched lines. The 3c stamp paid the 2c carrier fee plus 1c to the government (obviously, this was not a drop letter). The 5c U.S. postage was required for the shore-to-ship rate on trans-oceanic mail. All of the remaining postage was paid by the addressee in Holland. The 1845 date is confirmed by the docketing at upper left.

Only two other covers are recorded with this combination of the U.S. City Despatch Post and New York provisional stamps, one of which is no longer intact. Both covers originated from James Lenox at New Hamburg, New York. Lenox was a prominent New Yorker who gave the City of New York his library, which was later consolidated into the New York Public Library. Lenox sent a series of letters

from his manor overlooking the Hudson River, about 65 miles north of the city, while he was awaiting the completion of his Fifth Avenue mansion. The letters are franked with New York provisional stamps and postmarked at New Hamburg, New York.

When discovered, two of the letters in this group each bore the New York "RHM" initialled stamp and an uncanceled U.S. City Despatch Post stamp on bright blue paper. The first (Aug. 20, 1845, see Figure 2) was certified as a genuine usage by The Philatelic Foundation. However, the expert committee declined opinion on the other (Sept. 2, 1845). Tragically, this cast a shadow over the Sept. 2 cover, and it was altered to remove the carrier stamp. Some writers still allude to chicanery in describing the Aug. 20 combination cover, but having examined it carefully and after identifying several "tying" characteristics, this author is confident both stamps originated in their respective positions. The carrier stamp probably did not perform its intended func-



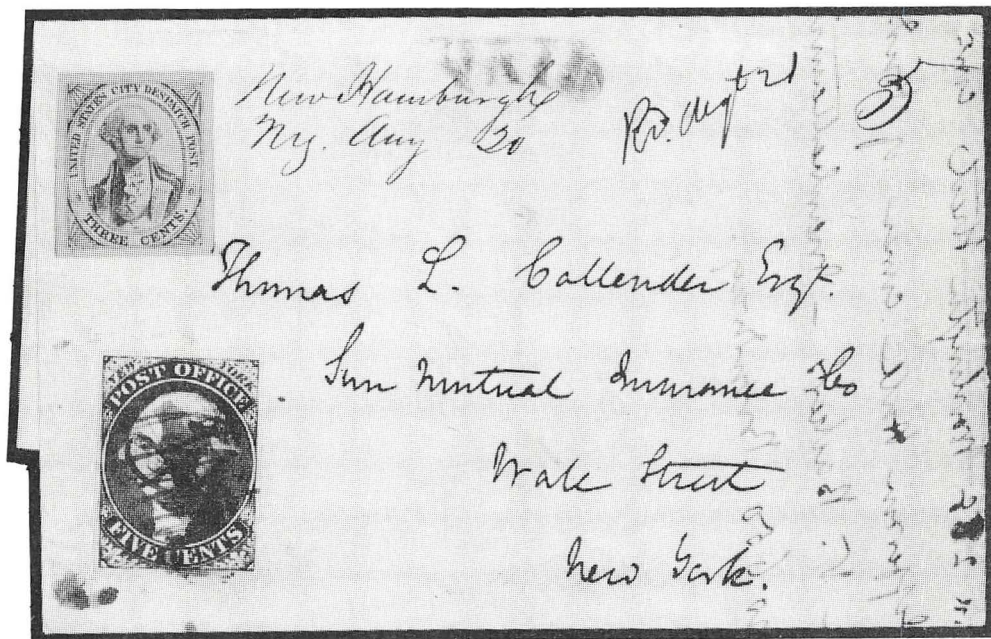


Figure 2. Combination with New York 5c "RHM" (Christie's Weill Postmasters' Provisionals).

tion; that is, it was not cancelled to collect the 2c carrier fee for service from the post office to the addressee. Nevertheless, Lenox, who was savvy enough to affix provisionals to his letters during the first month of issue, could have intended to prepay his letters for carrier delivery.

The August 20 cover was sold in 1989 when the Weill's postmasters' provisionals collection was offered at auction. At that time, Dr. Kapiloff added a considerable number of New York provisional covers to his collection of those issues, but passed on the carrier combination, presumably out of concern over the lack of any tying cancellation.

### Circa 1845 "2" Surcharge The Four Known Covers

**T**he world's first revaluation of a postage stamp by overprinting is believed to have occurred in late 1845 and early 1846, when the 3c U.S. City Despatch Post stamp was hand-stamped with a large red numeral "2" and a short arc through the "Three" of the printed value. The meager number

of examples of this "2" overprint and the lack of any corroborating records have left students in the dark about when and why these stamps were issued. Dr. Kapiloff never acquired one of the four known covers, so this discussion must look outside of the collection for examples.

The date of the earliest overprinted 2c cover is believed to be Oct. 29, 1845 (see Figure 3). This cover is of uncertain status, having been offered in the J. & H. Stolow auction of June 21, 1982, in which a large number of forgeries and questionable items was included among a collection of carriers and locals. The author is unaware of any conclusive evidence with respect to this cover and feels compelled to view it as genuine. However, this opinion could be at odds with other, more knowledgeable students' opinions. What follows is the author's observations and speculation.

The folded letter in Figure 3 is addressed to "Mrs. John P. Clark, N. York, N.Y." and endorsed "Politeness of Mr. Littlefield." Added below the address in another hand is a further



Figure 3. "2" Surcharge,  
October 29, c. 1845

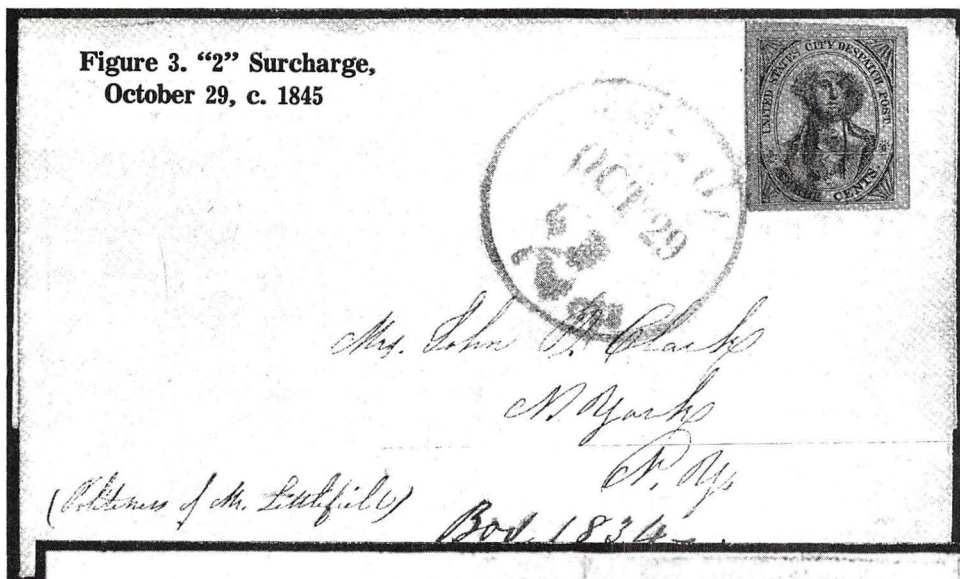


Figure 4. "2" Surcharge,  
January 9, 1846

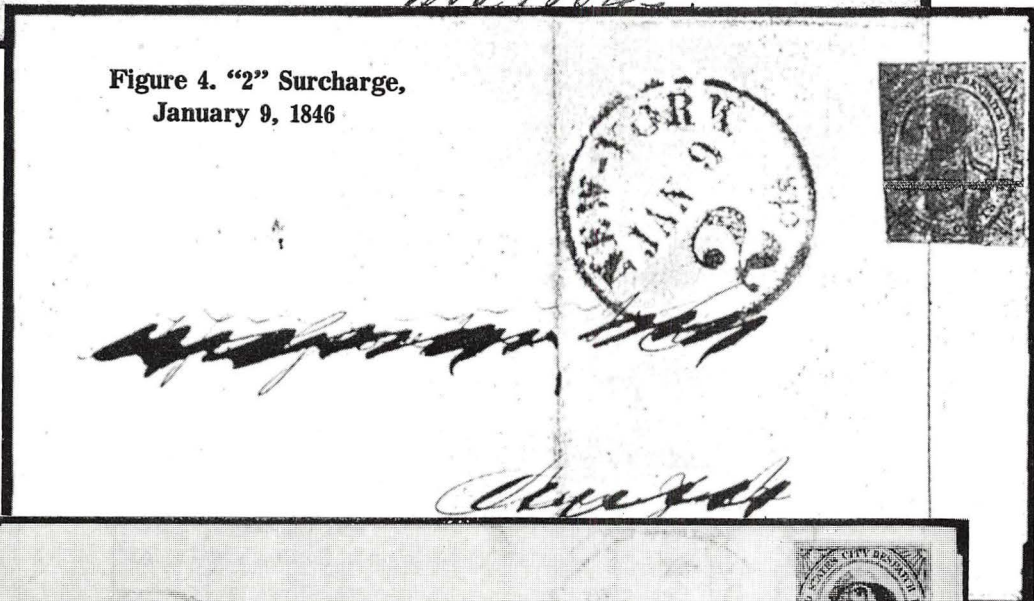


Figure 5. "2" Surcharge,  
February 14, 1846

directive, "Box 1834". The stamp is affixed at upper right and, according to the catalogue description, just barely tied by the outer rim of the red "New-York 2 cts/Oct 29" integral drop letter rate datestamp.

In what year was this letter mailed, and which rates applied? The letter must have been mailed after July 1, 1845, because the "2 cts" integral rate marking was only applied after that date on drop letters to indicate postage due. This marking is also found on U.S. City Despatch Post covers when carrier service and drop mail were used. Therefore, it is likely that this letter was mailed on Oct. 29, 1845, or possibly 1846 (less likely, if one assumes it is genuine, since this would put the cover well behind the other examples of the "2" surcharge).

The sender's endorsement and subsequent box number notation suggest the following scenario. The letter was handed over to the carrier and directed to the "politeness of Mr. Littlefield," meaning that he was to hold the letter for Mrs. Clark. The carrier delivered the letter to the post office where Mr. Littlefield's box number ("1834") was located, and the letter remained there until it was picked up. The 2c carrier fee was paid by the stamp, and the 2c drop letter postage was paid in cash when Mr. Littlefield picked up the letter.

Another scenario, which assumes no carrier service was involved (and the stamp does not belong), is that Mr. Littlefield brought the letter to the post office (his "politeness") and left it there — in box 1834 — for Mrs. Clark. Or, that the sender simply brought the letter to the post office, and it was placed in Mr. Littlefield's box.

The next dated example of the "2" overprint is the Jan. 9, 1846, folded cover from the Middendorf collection (see Figure 4). This and the earlier cover share the trait of not having any U.S. City Despatch Post markings. The

Middendorf cover is ex Ferrary, Hind and Waterhouse, and, while the stamp is uncanceled, it is "tied" by a strong filing crease, and the cover is generally regarded as genuine. The local New York City address is crossed out.

The third cover is the best known of the four (see Figure 5), having been part of the Caspary and Boker collections, and now part of a carriers and locals collection of great importance. It is a Valentine's Day usage with red strikes of the U.S. City Despatch Post datestamp (time omitted) and large numeral "2 cts" drop letter rate marking, both dated Feb. 14 (1846). The stamp is uncanceled, but a filing crease ties it to the cover. The stamp is overprinted with a sharp, clear strike of the "2" numeral and bar. This example was sold by Edgar Mohrmann in Germany in October 1973, and the catalogue entry notes that Caspary acquired the cover from Warren H. Colson in June 1907 for \$600.

The fourth and latest cover is dated March 2, 1846. This example is, in the author's opinion, a significant piece of evidence supporting this issue's authenticity, by virtue of its awful condition. Referring to the Caspary catalogue illustration (lot 385), the stamp has been torn fully in half. It was originally placed over the flapside of the cover and torn upon opening. It was subsequently rejoined and affixed to the front of the cover. The U.S. City Despatch Post datestamp reads "Mar /4 O'Clock" and the letter is dated 1846.

Based upon these examples, all of which are intra-city drop letter usages, we can speculate that the carrier operation was experimenting with a means of providing 2c stamps for use on 2c plus 2c carrier/drop letters. All of this took place in a period of declining patronage for the U.S. City Despatch Post.

*(To be concluded with a look  
at the local post period  
under Mead and Coles).*

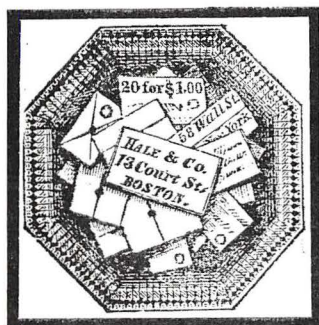


# FORGERIES OF HALE & CO.

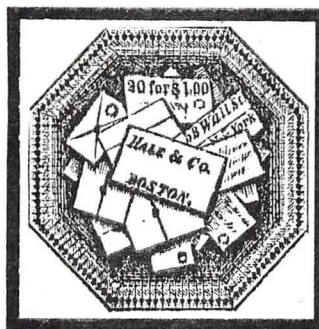
**A**lmost 50 years ago Elliott Perry and his friend and co-conspirator Arthur Hall embarked upon a formidable task — to write a definitive book about the Independent Mails. The basis would be the voluminous research notes Elliott Perry had amassed in his years of visiting libraries, historical societies, and publishers to pore over old newspaper advertisements and news columns. Arthur Hall did most of the writing. Work ceased when Hall died, the manuscript essentially complete but unedited. Shortly after, in 1972, Elliott Perry passed away, the book unpublished. After several starts and journeys the two-foot high manuscript with its faded photographs are now in the hands of a collector of Independent mails for editing. As completion of the project is somewhat distant, *The Penny Post* thoughtfully has offered to preview selected portions for its readers, particularly those segments which would enable the collector to sort out genuine stamps from forgeries. This is the first such preview. Corrections and additions from readers of the *Penny Post* are welcomed.

— Richard Schwartz.

## GENUINE TYPE I AND TYPE II



Genuine Type I: 75L1-2.



Genuine Type II: 75L5.

Both Type I (75L1 and 75L2 with address) and Type II (75L5 without address) share characteristics which are not seen on forgeries.

- ★ 1.) The lettering is well formed.
- ★ 2.) The “2” in the value inscription has a dot above the end of its foot and is the same height as the “0”.
- ★ 3.) The verticals of the “\$” project below the base line of lettering and the comma in “\$1,00” is entirely above the base line.
- ★ 4.) The corners of two envelopes, one of which is shaded, project from behind the value inscription envelope. (Only the Scott forgery imitates this — all other frauds show only one envelope).

Note: In most cases Type I is used here to illustrate the identifying characteristics of the forgery types. Type II would, of course, bear the same characteristics, but without the street address.

# THE FORGERIES

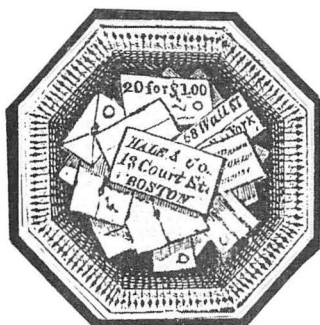


FORGERY A

A Hussey forgery. Note dot in middle of upper spears. The "20" and the zeroes in "\$1,00" are in condensed lettering style. The "2" is top heavy. The "N" and "Y" in "New York" are placed too high. No Period after "Boston". The forgeries appear in several shades of blue and in red on paper of different thickness. Type I has been seen also in blocks of four and six printed in red on light brown paper, 5.4 mils thick. Type II occurs as a block of four on laid paper of a shade lighter than that of the Type I blocks. Type II has also been seen in a strip of three on wove. Earlier printings have a cleaner design; later printings have messy inking and a late damaged plate printing exists on pelure.

Type I: Blue, red, red-brown/greyish.

Type II: Blue, red, milky green slate.

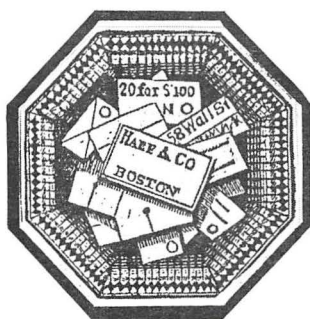


FORGERY B

Credited to J.W. Scott. For many years prior to 1934 this and the Type II forgery were used in Scott publications to illustrate the genuine stamps. The letters are poorly formed. The "2" of "20" is squat, the "3" tips over to the left. This forgery is the only one in which the corners of two envelopes jut out from beneath the value envelope, as in the genuine. Printed in blue on white and in red on white. The Type II companion forgery, which shows tiny traces of the routed address, has been seen only in blue on white.

Type I: Blue, red.

Type II: Blue only noted.



FORGERY C

An S. Allan Taylor product. Lettering is poorly executed. The "L" of "HALE" appears to be an "E". Printed in a wide range of colors on white and colored papers. This forgery is believed to exist only as Type II, without address.

Type I: None produced.

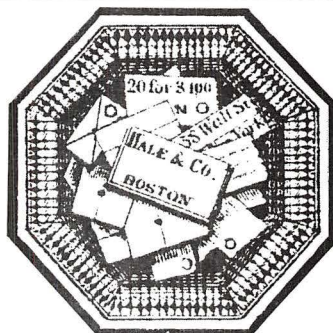
Type II: Red, red/yellow glazed, red/gray violet SC (Springer Form 5); blue, blue/blue, blue/red violet (Form 6); blue, blue/pale purple (laid) (Form 11); Orange, orange/orange; blackish brown, blackish brown/green, blackish brown/blue gray (Form 18). Also, unknown Forms: blue/pink (laid); brown; pale milky blue, lake.



Used as an illustration of Type II in Moens' catalogue of 1864. The value envelope has a condensed "20". The "\$" lacks vertical lines. "Boston" lacks a period. It has been noted in gold on white and red on white. While a Type I (with differing overall design) was also illustrated in the catalogue, no forgeries of Type I have been seen.

Type I: None recorded.

Type II: Gold, red.

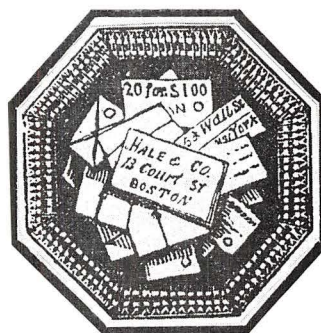


FORGERY D

This appeared as an illustration in Moens' 1884 edition of Coster's book on local stamps of the United States. Seen in blue on white and in red orange. The crudely executed letter forms differ as substantially from the genuine Hale as they differ from Moens' earlier illustration in his 1864 catalogue (above). An outstanding difference is the period after "for". Type I shows a dent in the border at 9:30 o'clock; this does not appear on Type II forgeries.

Type I: Blue.

Type II: Orange on cream.

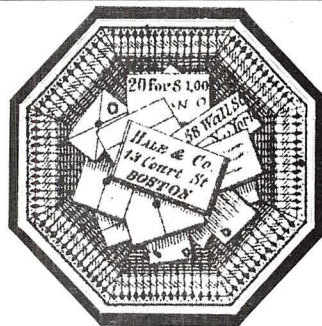


FORGERY E

Producer unknown. The "2" in "20" is slightly larger, the "\$1,00" is too small, the comma is too low. The "\$" has no vertical strokes. The envelope bearing the name and address has a double line delineating it on three sides. The quality of the printing is very good, approaching the best of the genuine Hales.

Type I: Red, blue, green.

Type II: Red, blue.



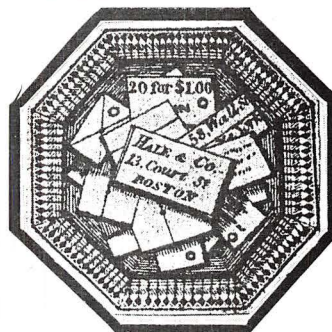
FORGERY F

Producer unknown. In addition to the usual differences from the original, there is a period after the "3" in "13" and one under the "t" of "St" instead of after it. As well, a comma falls between "58" and "Wall". A Type II of this fraud has not surfaced thus far.

Type I: Presumed red, blue.

Type II: None recorded.

**NOTE:** The editor has appended newly discovered colors to the above forgery descriptions. It is hoped readers will help flesh out the full picture after referring to their own holdings.



FORGERY G

# CALIFORNIA DREAMING

## THE CARNES BIG BEAR STAMP SCHEME

By Gordon Stimmell

**T**he small bear stamp (35L1-2) genuinely used by George A. Carnes for his City Letter & Package Express in 1865 (not 1864, as Scott lists it) has been extensively documented, most notably by Ernest A. Wiltsee in *The Stamp Specialist White Book* and Donald S. Patton in *The Philatelist* (Dec. 1963).

However, the origin and status of the six large stamps (35L3-8) could 'bear' a bit more illumination. No other San Francisco local post produced such a brazen range of colored adhesives. This is suspicious in itself. As well, they do not exist properly used postally. Were these stamps totally philatelic? And what exactly was Carnes' involvement in producing them?

As well, collectors remain baffled at how to distinguish the "original" printing of 35L3-8 from two subsequent tiers of "reprints", despite Donald Patton's informative descriptions of the stages.

### CARNES' COMPLICITY

Wiltsee in the *White Book* (P.18) quotes from an article written by Mr. H.B. Phillips (*Filatellic Facts and Fallacies*, Dec. 1893) which "states that Carnes was enterprising and had these various issues made to sell a large number to Pemberton (a stamp dealer) of London."



Original tete-beche pair  
(35L7) from pane of 18.

This would seem to point the finger directly at Carnes as the culprit. What Wiltsee neglected to note was a tiny follow-up letter two months later, (*Filatellic Facts and Fallacies*, Feb. 1894 P.89). C.W. Lomler's letter is worth quoting in its entirety:



"Messrs. W. Sellschopp & Co. San Francisco, Cal.

"Dear Sir: - In the December number Mr. H.B. Phillips has a paper on "Counterfeit Franks and Locals," which contains some errors in regard to Carnes' City Letter Express.

"Mr. Carnes had first an office on Montgomery street, and Boyd, the engraver, engraved his stamps. Being a collector I became acquainted with Mr. Carnes, and as a correspondent of the late Edwin L. Pemberton, I sent some of Carnes' stamps to him.

"In due time I received a letter from Mr. Pemberton asking me to request Mr. Carnes to place the name "San Francisco" on his stamps, as it would show where they came from.

"I did so, and Mr. Carnes agreed to comply if I would have the stamp engraved. Mr. Boyd engraved this stamp also on wood and I had six electrotypes made, and about 3,000 stamps were printed in the Abend Printing Office, the colors being bronze, gold, silver, black, blue and red.

"Mr. Carnes received about 2,000 stamps, also the cut and electrotypes, and I retained the balance of the stamps. In accordance with our agreement Mr. Carnes used a number of each color and would have used them all if he had not received an appointment in the San Francisco Post Office.

"He had moved before this time to Washington street, between Sansome and Montgomery. Not being able to attend to the express business any more he sold out to William E. Loomis, who carried on the newspaper business and was at that time the owner of the G.&H. Express.

"What became of the cut and electrotypes I do not know, as Mr. Carnes delivered to Mr. Loomis only the small electrotypes.

"About the blue X surcharge, I never heard of it, but I do not think Mr. Carnes used it. His express was less than a year in existence.

"I enclose you one of the stamps, only eight of them being in my possession, but Mrs. Craig had a large number of them in her stock of stamps. There are more inaccuracies in Mr. Phillips' article, but enough for this time.

"Yours truly, C. W. Lomler."

If we can vouch for the veracity of this letter, and several points do accord with documented postal history, this stamp collector inspired and directed the design of the cut and printing, using Pemberton's suggestion of adding "San Francisco" and did it with Carnes' cooperation, indeed, complicity.

And Boyd the engraver produced both the small and large bear stamps, a link borne out by similarities in detailing in both stamp types.



Smudged metallic ink:

Genuine: 2nd printing?

### THE "ORIGINALS"

With "about" 3,000 large bears printed, we might easily presume 500 were printed in each of the six colors. However, this is not a safe assumption mathematically and besides, the black, blue and red are encountered in greater numbers than the metallic colors. Patton says the panes consisted of 15 subjects, 3x5, with the bottom two rows *tete-beche*. Examination of the pane he based this statement on (owned formerly by Elliott Perry) shows a very narrow top margin, and a row of 3 is likely missing. A full pane offered in the



The "first" reprint.



"2nd reprint" (transfer).

Lilly Sale consisted of 18 stamps, 3x6, with bottom two rows *tete-beche*.

It seems clear from examining a wide range of examples that the first (and perhaps only original) printing produced finely detailed stamps, with fairly subdued colors and light inkings. The red, black and blue are all pale hues. The horizontal background lines behind the bear are broken, some reduced to dashes. The scarcer metallic colors, equally subdued in inking, lack smudges on the lower design. These first "originals" are .0032" thick.

However, the gold, bronze and silver also occur in somewhat brighter more reflective metallic inks, with smudges or burrs, especially near the lower left oval numeral "5". These come printed on thinner paper, measuring .0025".

From the Lomler letter above, Carnes took possession of the cut and electrotypes after the first printing. Did he run off more metallic versions because fewer of them were originally printed, so as to make more complete sets of six? We will never know. Did Loomis do anything with the cuts later? Suffice it to say, there are metallic colors from the original stone in both fine uns-mudged, and slightly more boldly colored, smudged state that do not live up to the quality of printing normally produced by Boyd.

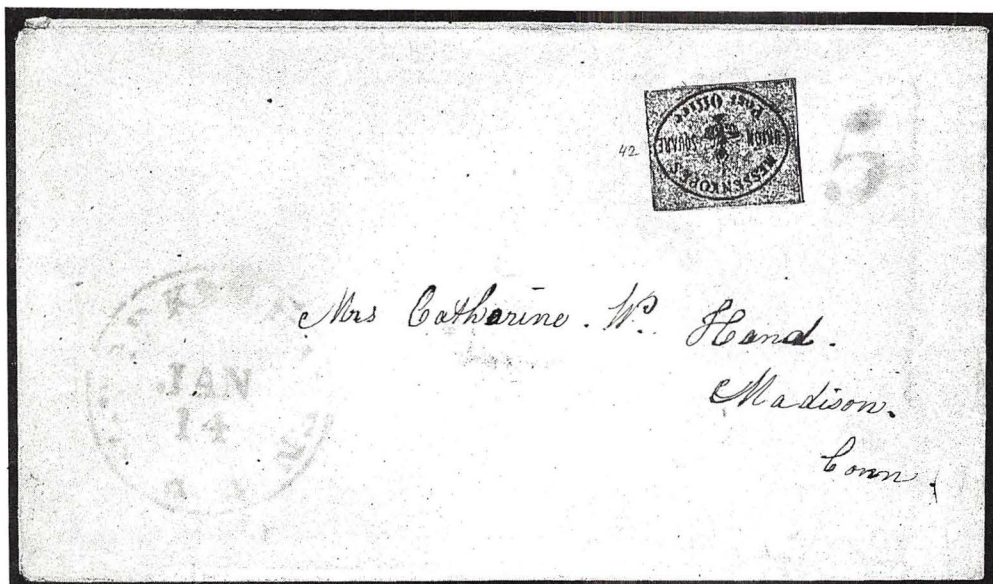
## THE "REPRINTS"

The first reprinting, in horizontal panes of three, has been described in detail by Patton. These stand out from the "originals" because the colors are far more vivid: Bright red, deep blue, and shining (sometimes ribbed) gold. A secret mark to distinguish these: On most copies, a tiny white cut breaks through the right limb of the star over the bear. The horizontal lines in the background flanking the bear are solid, as opposed to originals and the following reprint transfer. Thickness (with characteristic gum) is .0032".

The last reprinting listed in Patton is very coarsely inked. It is not a true reprinting, but rather a lithographic transfer from an original on thick, .0042" wove paper. The red is orange, the blue is more peacock, and the black far darker. All three colors match those of a lithographic transfer of the small bear original (which Patton listed not as a reprint of 35L1, but as Forgery C) and stem from the same smelly source.

For descriptions of the two big bear forgeries, I refer the reader to Patton's *Philatelist* article. For diehard forgery buffs, I would just like to note that Forgery A by S.A. Taylor actually consists of two subtypes, with the star slightly nearer or farther from the bear's head.





Original 106L1 with N.Y. & New Haven RR cancel and "5", Jan. 14, 1849.

## A MESSENKOPE'S UPDATE

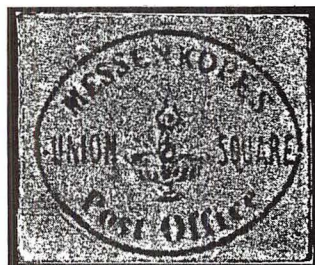
By Gordon Stimmell

Collectors continue to be baffled in sorting out Messenkope's originals from the forgeries. But why? A simple cause of this confusion is mixed-up photos on page 246 of Donald Patton's otherwise fine Messenkopes article in his book, *The Local Posts Of New York*.

My advice is simple. Ignore the photos. The detailed descriptions in the text and his hand-drawn illustrations on Page 248 are accurate and adequate. Only the photos are horribly scrambled.

As an unfortunate result, there is no photo of the genuine stamp depicted at all with Patton's article.

Photo 1 marked "Genuine" is Forgery A, based on Moens. Photo 2 captioned "Forgery A" is actually Forgery D, Taylor's first forgery. Photo 3 is properly Scott's Forgery B, as cap-



Genuine Messenkope's  
with mermaid fountain.

tioned. But Photo 4, marked "Forgery C" is a second example of Forgery B. Finally, Photo 5, noted as "Forgery D", is really Forgery E.

Confused? Small wonder.

As I said, go by the text and Patton's meticulous hand-drawings. But just to clear the air, let me take this opportunity to illustrate the genuine Messenkopes, and briefly augment data on the forgeries.

## THE ORIGINAL



Genuine 106L1 in  
a rare strip of three.

Go by Patton's detailed description. I would only add that an instant key to recognizing originals is the thin outer oval, which is so fine as to verge on non-existence above the design, and is brokenly visible below.

## FORGERY A

This forgery, a lithograph, matches fairly faithfully the Moens 1864 Catalogue cut. An unrecorded red on white example has been reported. A second, engraved, variety of this has turned up, tied with a fake New York CDS on an 1849 turned cover. In contrast to the lithographed green version, the engraved stamp has an exquisitely detailed mermaid and fountain and the inking stands up from the paper. A pale

sky blue, this is possibly a dyed first state Moens proof, which normally occurs in black on white.

## FORGERY B

Scott's forgery is well-described and matches the old pre-turn of the century Scott Catalogue cuts. It should occur on thicker wove and thinner porous-network papers.

## FORGERY C

I long suspected this to be Hussey's handiwork, but was unable to locate multiples to prove my conjecture. Now a single copy has turned up with the partial imprint of Kidder's Forgery D (unattributed) overlapping the Messenkope's design. This is very un-Hussey. So the mystery persists.

## FORGERY D

Taylor's First Forgery is nicely described and colors noted are fairly comprehensive.

## FORGERY E

Taylor's Second Forgery I additionally note in black on pink paper colored through, black on flesh colored through and brown on pinkish cream colored through.

## MODERN CRUDITY

And finally, a crude current era forgery has surfaced, which simply replicates the useless battered line cut currently depicted as the real thing in the Scott *Specialized Catalogue*. The maiden in the fountain is largely reduced to a series of remnant dots, and the Q in SQUARE is low. This occurs in black on baby pink and black on robin's egg blue, both colored through. I won't legitimize it by assigning it a designation.

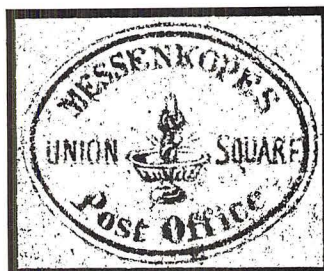


# FORGERY A

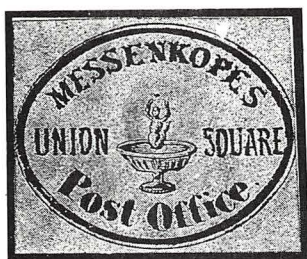


A: After Moens.

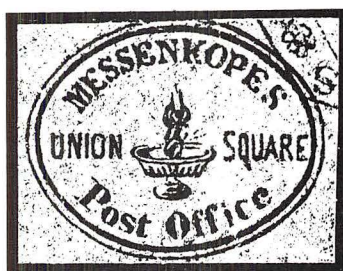
# FORGERY C



C: Maker unknown.

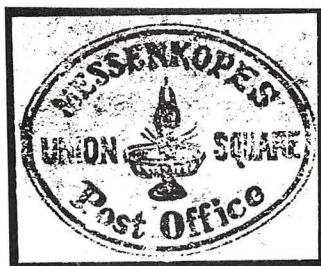


A: Engraved Moens.



C: With Kidder imprint.

# FORGERY B



B: By or for J.W. Scott.

# FORGERY D



D: Taylor's first.

# NEW FORGERY



Modern imitation.

# FORGERY E



E: Taylor's second.



SPECIALIZING IN . . .

**UNITED STATES LOCALS  
REVENUES - TAX PAID  
MATCH & MEDICINE  
CINDERELLAS  
STATE REVENUES**

Excellent, Comprehensive Stock.  
We Welcome Your Want List.

**BUYING & SELLING**

Paying Highest Prices For The Above.  
Ship with price or for our prompt offer.

**PARK CITIES STAMPS**

Byron J. Sandfield • Phone 214-361-4322

6440 N. Central, Suite 409

Dallas, TX 75206



Member: TSDA, ARA, TPA, U.S. Classic Society.



# ERIC JACKSON



**REVENUE,  
TELEGRAPH and  
LOCAL POST STAMPS  
of the UNITED STATES**

**BOUGHT AND SOLD**

**Custom approvals sent against your want list**

**References please.**



**P.O. BOX 728**

**LEESPORT, PA 19533**

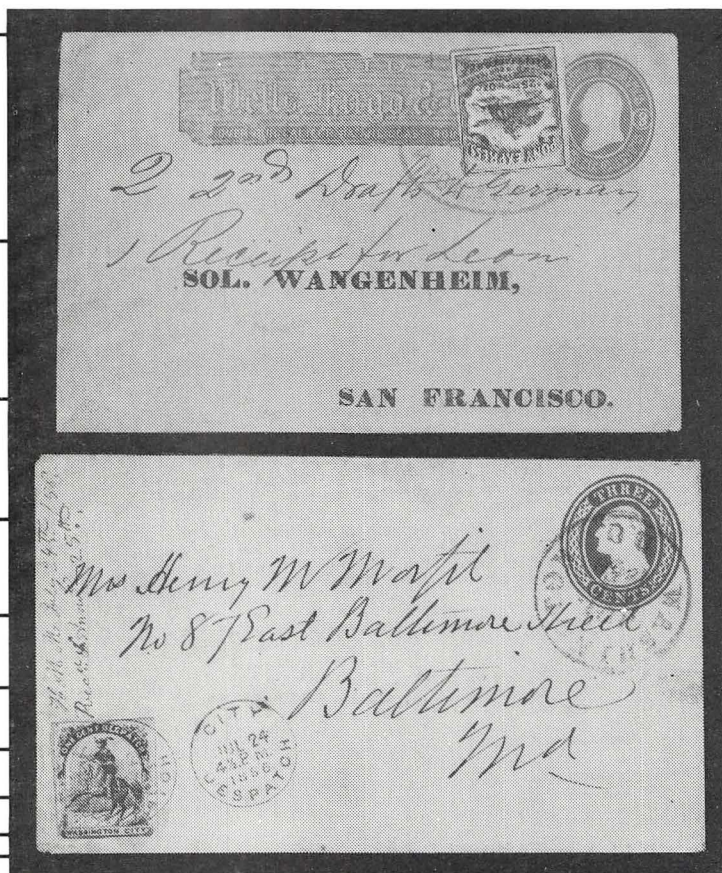
**(215) 926-6200**



**ARA**



If you are a dedicated collector of classic United States stamps and covers, we can help you build a collection of distinction.



**Ventura  
Stamp Co.**



Affil. University Stamp Co., Inc. ASDA, APS  
Post Office Box 508, Brielle, New Jersey 08730  
(908) 528-7178 Fax (908) 223-2810