

JULY 2009

WHOLE NUMBER 68

VOL. 17 NO. 3

THE PENNY POST

Official Journal Of The Carriers And Locals Society



Bhutan postal souvenir sheet with pictures of eighteen U.S. local post stamps.

INSIDE THIS ISSUE

CARRIERS AND LOCALS ON LABELS AND SOUVENIRS

BALTIMORE "HORSE AND RIDER" ADHESIVES

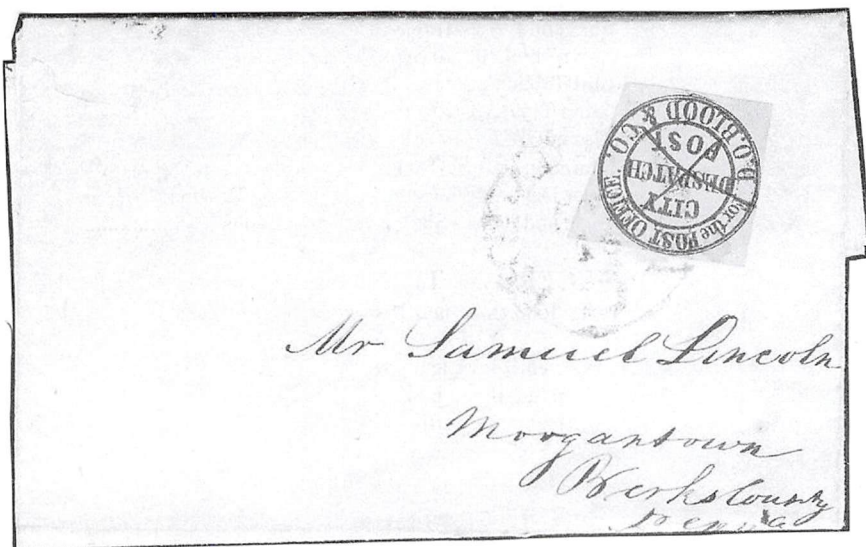
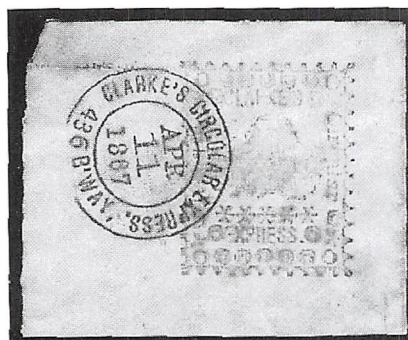
THE BLUE BALTIMORE CARRIER DEPARTMENT HANDSTAMP

ROBISON FORGERIES IDENTIFICATION TIPS

S.F. LOCAL COVERS AT THE BILL TATHAM SALE

AND MORE

Byron J. Sandfield
Major Buyer & Seller of
Carriers & Locals
For Advanced & Beginning Collectors



**PARK
CITIES
STAMPS** 6440 North Central Expressway
Suite 316
Dallas, Texas 75206
Phone: 214/361-4322
www.parkcitiesstamps.com

Member - ASDA, APS, TSDA, ARA
The Carriers & Locals Society

THE PENNY POST

VOL. 17 NO. 3

JULY 2009



2000 The Carriers and Locals Society, Inc.
APS Affiliate 211

Official Journal Of The Carriers and Locals Society

Published quarterly in January, April, July and October.
Price per issue: \$10.00 for members, \$12.00 for non-members.

Website: www.pennypost.org

CONTENTS

Editor's Message	Page 2
President's Report	Pages 3-4
Index to Advertisers	Page 4
Penny Post Bulletin Board	Pages 5-6
Obituary	Page 7
Carriers and Locals on Labels and Souvenirs by Clifford Alexander	Pages 9-33
New Forgeries – "To a Forger Unknown" by William Sammis	Pages 34-36
Important S.F. Local Covers at the Bill Tatham Sale by Larry Lyons	Pages 39-44
Robison & Co. Simplified Identification Tips by Clifford Alexander	Pages 46-48
Update to the American Stampless Cover Catalog by John Bowman	Page 48
Sammis' Four Purple Stamps–My Opinion: They're Taylor Creations by Larry Lyons	Pages 51-55
Baltimore Blues: The Baltimore Carrier Department Handstamp by John Bowman	Pages 57-60
Baltimore Carriers, Part II - The "Horse and Rider" Stamps by Larry Lyons	Pages 61-72

OFFICERS OF THE SOCIETY

President:.....	John Bowman, 14409 Pentridge Dr., Corpus Christi, TX 78410 E-mail: jbowman@stx.rr.com
First Vice President:.....	Clifford Alexander, 8721 Bluedale St., Alexandria, VA 22308
Second Vice President:	Byron Sandfield, 6440 N. Central Exp., Suite 316, Dallas, TX 75206
Secretary / Treasurer:.....	Martin Richardson, P.O. Box 74, Grosse Ile, MI 48138 E-mail: MartinR362@aol.com
Auction Manager:	Alan Cohen, P.O. Box 929, New York, NY 10025

DIRECTORS

Cliff Alexander, Alan Cohen, Stephen Gronowski, Eric Karell, Larry Lyons,
Tom Mazza, Vernon Morris, Martin Richardson, Bill Sammis

EDITORIAL BOARD

Editor-in-Chief	Larry Lyons, 7 Brightfield Lane, Westport, CT 06880
Local Posts	Stephen Gronowski, 55 Oak Trail Ct., Alamo, CA 94507-2502
Carriers	Scott R. Trepel, 60 East 56th St., New York, NY 10022-3219
Expresses	Bruce Mosher, P.O. Box 33236, Indialantic, FL 32903
Fakes and Forgeries	Clifford Alexander, 8721 Bluedale St., Alexandria, VA 22308

Address changes should be sent to the Secretary, also back issue orders, other correspondence to the Editor-in-Chief. Reports of new items or articles should be submitted to the appropriate Section Editor or Editor-in-Chief. Do not send stamps or covers unless requested. Any items sent will be protected but no liability attaches to an editor or the Society.

Editor's Message

By
Larry Lyons

Members of the Carriers and Locals Society continue to win top honors in exhibiting competitions. Extra special kudos to Bill Sammis for winning the NAPEX Grand Award in June for his spectacular ten frame exhibit, "The Expresses of Maine-Private and Postal 1840-1865." Bill also won the Postal History Society Award, the American Philatelic Society Award and the U.S. Stamp Society Statue of Freedom Award. George Bowman won a single frame Gold Medal at NAPEX for his exhibit, "The Fresno-San Francisco Bicycle Posts of 1894". The Penny Post won its 13th Gold Medal at NAPEX. Lawrence Lebel took a Gold Medal at ROPEX in May for his extensive Boyd's exhibit. Bill Sammis won a Gold Medal for his exhibit at that show. Bill's exhibit also received the Reserve Grand Award at Boxborough in early May. At that show I won the Grand Award for my single frame exhibit, "The Rise and Fall of Government Carrier Service in New York 1842-1846". If I have missed any awards please let me know so we can inform the Society.

In This Issue

The Penny Post Bulletin Board has been very well received. See pages 5-6 for interesting tidbits. The board is a good way to show something of interest and get comments and assistance. Please drop me some tidbits for next time.

We have a major research article for you from Cliff Alexander showing and explaining Carriers and Locals on labels and souvenir sheets. This article has been in the works for a few years. Special thanks to Cliff for his insightful article.

I have Part II of my Baltimore Carriers article presented here featuring the "horse and rider" stamps. In keeping with the Baltimore theme, John Bowman has written an article on the rare blue Baltimore Carrier Department handstamp. We thank John for his research.

Bill Sammis has written an article on four purple forgeries he has linked by ink and paper and I have followed it with my hypothesis that they are Taylor forgeries. Special thanks to Bill for making this discovery. Cliff Alexander continues his series on simplified forgery identification tips. In this issue he presents Robison & Co. Much thanks to Cliff for this study.

Mission Statement

The purpose of *The Penny Post* is to present original research articles in the fields of United States Carriers, Local Posts and Eastern Expresses. Forgeries in these areas are also researched. Any article in these fields can be submitted to me for publication (email: lyonsentrp@aol.com). The articles are reviewed and assistance is provided by the Editor's section heads who comprise the editorial board. *The Penny Post* continues to be at the top of society publications.

I hope you enjoy this issue of the *The Penny Post* and Happy Collecting.

President's Report

Carriers and Locals Society Annual Meeting

March 28, 2009

Garfield-Perry March Party

by

John D. Bowman

The Annual Meeting of the C&LS was held in conjunction with the US Philatelic Classics Society Annual Meeting at the Garfield-Perry March Party in Cleveland, Ohio on March 28, 2009. Over a dozen Society members were in attendance. In the absence of Auction Manager Alan Cohen, I offered his annual report and all recognized Alan for his selfless contributions to this voluntary position which has brought so much revenue into our coffers. Secretary-Treasurer Martin Richardson echoed my comments by saying that our auctions have once again made a member dues increase unnecessary.

Marty provided updates on our membership status and finances. We are stable in both areas, although new members and additional sources of revenue are always needed. Readers, can you help with networking to recruit new members, or provide tax-deductible donations for our sustenance? I want to remind you to consider including the Carriers and Locals Society in your estate planning.

Penny Post Editor-in Chief Larry Lyons provided his annual report. He has been editor since January of 2000. We have garnered twelve gold medals in literature competitions under his editorship. He awarded his annual Editor's Choice award for Best Article of the Year to Bill Sammis, and gave Second Choice to authors John Bowman and Gordon Stimmell for the series on the American Letter Mail Company.

I gave a report about the Committee to Update the *Scott Catalogue*. Editor James Kloetzel has been very receptive and complimentary of our team approach. In fact, it is once again time to provide recommendations to him for updating the next *Specialized* catalog, so please let me know of any suggestions you may have.

The next order of business was election of Directors to the Board. The nominees on the ballot were Alan Cohen, Bill Sammis, and Stephen Gronowski. Marty Richardson confirmed that the proxy count was sufficient to elect these individuals as Directors of the Class of 2012.

Other business raised by members included the storage and disposition of back issues of the *Penny Post*. Marty Richardson noted the storage costs for the back issues amounted to \$600 a year. Ron Cipolla suggested that we sell a complete run of back issues for \$250 for a limited time for current members, and offer the same price to new members. We decided to offer a limited number of complete runs at this discounted price until they are gone, which should pay for storage costs for the remainder.

Marty Richardson, who also serves as our website manager, asked for material to post on our web site. I encourage you to submit informative material

directly to him at the email address on our first page to post on the website in order that we can continue to attract new members.

Next, the Director's Meeting was called to order, and a quorum of Directors were present. They voted to approve the slate of officers: John Bowman for President, Cliff Alexander for First Vice President, Byron Sandfield for Second Vice President, and Marty Richardson for Secretary-Treasurer.

A discussion ensued concerning the Hall-Perry manuscripts that belong to the C&LS, but have been lost.

I want to encourage you to attend our next Annual Meeting, currently held in conjunction with the US Philatelic Classics Society, at ARIPEX 2010 to be held February 12-14, 2010 at the Mesa Convention Center, located at 263 N. Center St., Mesa, AZ 85201.

We hope to provide an update to our *Penny Post* Index this year, so stay tuned.

I always want to remind you to look over your duplicate material to submit to our auction sales, and also to encourage you to become an active bidder for this highly successful and important way of building your collection.

And do not forget to support our gold-award winning journal by considering publishing something, even your favorite local/carrier item, or submitting something to the Bulletin Board as a "What is this?"

ADVERTISERS IN THIS ISSUE

	Page
Nutmeg Stamp Sales	8
H.R. Harmer, Inc.	37
Spink Shreves Philatelic Galleries Inc.	38
Alan E. Cohen	45
Schuyler Rumsey Philatelic Auctions	49
James E. Lee	50
Stanley M. Piller	56
Park Cities Stamps	Inside Front Cover
Eric Jackson	Inside Back Cover
Robert A. Siegel Auction Galleries, Inc.	Back Cover

Penny Post Bulletin Board

(Responses should be made to the Editor-In-Chief for forwarding)

In 1947, Harry Konwiser's article "Express Company Labels" was published in *The Stamp Specialist Mahogany Book*. Among the labels he cited are several whose images have not been seen recently including the following thirteen labels, whose descriptions are quoted verbatim. Any information concerning any of these labels would be appreciated, especially their images.

- Boston Independent Exp. Co. (Green Label).
- (Child & Co.). FORWARDED BY/ Child & Co's./ GREAT WESTERN EXPRESS, (railcar illustration)/ -From-/ Canal Bank Building,/ Middle Street/ Portland. (Black on orange, box 37x45).
- Commercial Express Co. (New Orleans; 1865; green label).
- FOGG'S/ NEWBURYPORT & BOSTON/ EXPRESS/ Offices 105 Arch Street, 33 Court Square, 11 Harrison Av. Ext. BOSTON/ Leaves 11:30 A. m. 2:30 and 4: p.m. (1888; black on yellow, framed. 54x31).
- Hatch & Co., originally Hatch, Gray & Co's Express, Boston to New Bedford and Martha's Vineyard.
- Henry's Express, New York & Buffalo Daily Express. (black on buff).
- KENNEBEC EXPRESS, office etc. (1848; Red label).
- Kenyon & Co's/ Northern & Western/ Daily Package Express/ From New York/ Offices, etc. (Black on yellow; 55x38).
- Macquire's Express. (Black on light violet, 4 1/2x2 3/4, carries office locations, etc., etc., as apparently used (1880) on baggage to N. Y. railroad and steamboat lines).
- MANSON & CO'S./ Amesbury, Salisbury,/ and BOSTON EXPRESS/ Offices, 32 Court Sq. Boston/ Leaves Office. Boston at 4 o'clock P. M. (Double frame line, one heavier, one lighter, 2 Mm. a part, orange on red label). (1868 usage) (Reported as 50x29).
- National Express & Transportation Co., Boston. (1866; red label, 77x52).
- Niles & C., Boston, Dover, Rochester, Farmington, & Wolfboro, 23 Court Square, Boston (Label 34x27 Mm. perforated at top).
- (Pullen & Evans). Forwarded By/ Pullen & Evans'/ Express/ Via N. Y. & H. R. R./ Office—2 Tryon Row, New York. (1857; black on red; 37x25).

NOTES: Most dimensions are in millimeters, horizontal dimension first. Dimensions are probably for the design area on the label and not overall paper size. Slash mark (/) indicates end of a printed line. Citations were probably copied directly from collector reports sent to Konwiser. Quoted text may not be entirely accurate for each label.

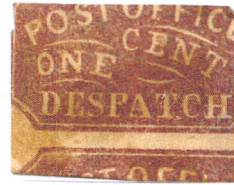
Bruce Mosher

I am conducting research on Toby's Express (which operated out of New Orleans from 1855 to 1858) for a future *Penny Post* article. I am in need of scans or photocopies of covers carried by Toby's Express other than the two covers that were in Schuyler Rumsey's Auction No. 31. Please send scans to lballantyne@att.net or photocopies to Larry Ballantyne, P.O. Box 6634, Katy, TX 77491-6634."

Larry Ballantyne



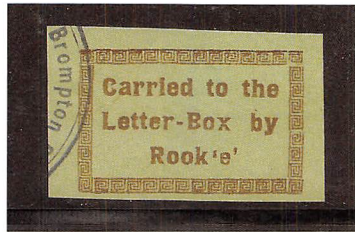
Front



Back

The above item comes from a collector asking "what do you think it is?" It is printed on both sides.

Charles DiComo



Here is a previously unreported fantasy.

John Bowman

Can anyone send me a scan of the following Taylor forgeries?

Prince's Letter Dispatch (steamboat) (B) black on deep red S.C.
Chicago Penny Post (D) Ultramarine on white Horizontally Laid
Metropolitan P.O. 13 American Bible House (IIIB) Blackish brown on white

Obituary

Carl Walske

1922-2009

Carl Walske was among the leading collectors and researchers of philatelic forgeries. For over fifty years, he studied the forgeries of stamps and their forgers, and was particularly interested in the production methods used for various forgeries and in the relationships between forgers. He was well known for his work in identifying new types of Sperati forgeries, and was perhaps the greatest student of Jean de Sperati, the most dangerous forger in philately.

Born on June 2, 1922 in Seattle, Washington, Carl served with the United States Navy in the Pacific during 1943-45. In 1951, he received his PhD Degree in Nuclear Physics from Cornell University, where he studied under Nobel-prizewinner Hans Bethe. He started his career at the Los Alamos Scientific Laboratory, and later served as the Assistant to the Secretary of Defense for Atomic Energy. His career also took him overseas as Scientific Advisor to the Nuclear Test Ban Treaty talks in Geneva, Switzerland and to scientific advisory positions in London and Paris. In his last job, as President of the Atomic Industrial Forum, he promoted the peaceful uses of atomic energy. Carl retired to Seattle in 1987, where he passed away peacefully after a short illness on May 30, 2009.

Carl wrote many articles on forgeries and forgers, and also co-authored (with his good friend, Robson Lowe) two critically acclaimed books; The Oneglia Engraved Forgeries, Commonly Attributed to Angelo Panelli (1996), and The Work of Jean de Sperati II, including Previously Unlisted Forgeries (2001).

Carl was a member of the American Philatelic Society and the Collectors Club of New York. He was also a Fellow of the Royal Philatelic Society London. He was a supporter of the Carriers and Locals Society and he very much enjoyed *The Penny Post*.

He leaves his wife Marjorie, daughter Susan Cabiati and son Steven, whom he also enticed into philately. He particularly enjoyed sharing philately with his son, but frequently complained that the study of forgeries and postal history were at opposite polar ends of philately.

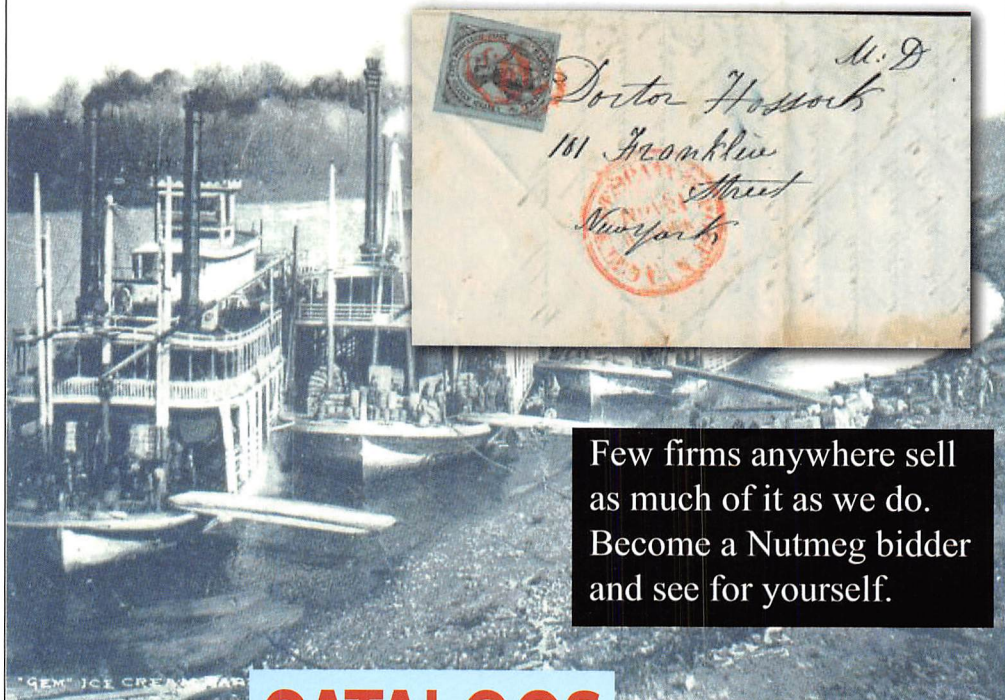
When asked to explain his low-profile professional and philatelic persona, he explained that he tried “to gain my reward through self-respect rather than public recognition; to expend effort as an offset to my limitations.”

Charles J. Peterson

1933–2009

Noted stamp collector and literature expert Charles Peterson died on June 12. Peterson was a member and friend of the Carriers and Locals Society. A full obit can be found on page 2 of Linn's Stamp News of July 6, 2009.

U.S. postal history your cup of tea?



Few firms anywhere sell as much of it as we do. Become a Nutmeg bidder and see for yourself.



CATALOGS
They're yours
FREE always.



Special Note to Buyers of Great Material: Someone told us recently that there are still some serious collectors who haven't availed themselves of the rather fantastic opportunity to become a bidder in Nutmeg's world famous Mail Auctions.

What? How can that be?

Here's the deal. Find a postal card (or get on your computer) right now and send us this message: "Send catalog." Two little words.

Those two little words might just be the best ones you've uttered since you said, "I do!" They'll open up doors you never dreamed of. Why? Because no one consistently offers the kinds of fabulous stamps and covers we do!



U.S., U.S., U.S. and more U.S.
Thousands of lots. All the time.
(But wait. We do foreign, too!)

Call Toll Free
1-800-522-1607
for your free catalog.



Look for us on the Web: www.nutmegstamp.com

Nutmeg Stamp Sales

18061 Fitch
Irvine, CA 92614

Email: info@nutmegstamp.com



Carriers and Locals on Labels and Souvenirs

By

Clifford J. Alexander

Classic U.S. stamp collectors typically do not view themselves as carrier and local collectors. But many classic U.S. collectors have developed an interest in the postal history of the city, county or state in which they live. And, in some cases, a carrier or local post operated there and is represented in their collections.

Because carrier and local stamps and covers are often found in classic collections—as well as the general interest of collectors in postal history—carriers and locals have been a subject of curiosity and fascination for many stamp clubs located in cities that once saw carrier and local operations.

For over a hundred years, local as well as national stamp organizations have printed souvenir labels and cards to publicize and commemorate their events. These items fall within the category of “Cinderella” philately, which typically refers to adhesives that look like stamps that carried the mails but are not. They are referred to as Cinderellas because many stamp collectors give them second class treatment like the stepsister in the children’s fairy tale.

In some cases, the labels and cards featured the stamp of a carrier or local post that operated in the city in which the stamp show was held. My survey has identified 46 national and local philatelic shows that have issued labels, cards or sheets with facsimiles of carrier or local stamps. This article presents a survey of these philatelic Cinderella items.

For purposes of this article, I will refer to the souvenir adhesives as labels. The terms “label” and “seal” are often used interchangeably. Labels are slips of paper affixed to something for purposes of identification or description and can include seals. Strictly speaking, seals are used to authenticate or ratify a document, or to close a document and make it secure. Official postal seals typically are used for three purposes: (1) close mail received unsealed by the post office; (2) repair a tear or other damage to mail; and (3) notify addressees that mail was opened by mistake and was resealed.

History of the Stamp Show Seals and Labels

One of the early stamp club souvenirs with a facsimile of a U.S. stamp printed on it was a menu for the August 1887 annual dinner of the Chicago Philatelic Society that was jointly held with the American Philatelic Society. It had a copy of Scott No. 215 tied by a Chicago postmark “Rec’d Aug 9, 9 P.M.”

The first philatelic label was a seal issued by George Linn in 1908 for the American Philatelic Association convention in Columbus, Ohio. It shows the Carnegie Library. It was at this convention that the APA changed its name to the American Philatelic Society.

However, the first U.S. souvenir label to feature a carrier or local stamp design was handed out to attendees at a 1902 exhibition sponsored by the Pacific Philatelic Society of San Francisco (**Figure 1**). This society had obtained a number

of genuine copies of the McGreeley Express stamps and overprinted on them the following legend: "SOUVENIR OF THE FIRST EXHIBITION OF THE PACIFIC PHILATELIC SOCIETY."

The next recorded souvenir label or card with a carrier or local design was issued 30 years later when the 1932 International Philatelic Exhibit in New York printed a series of four labels with the vignette of the pony express rider from the Wells Fargo & Co. stamp (**Figure 2**). It was printed in red, blue, purple and green print on white paper.

During the 1930s and early 1940s, in particular, labels were most popular. In 1940 alone, over 200 philatelic show labels were issued. From 1930 to 1943, the survey records 10 carrier stamps on labels for five different shows. During this period, nine local post stamps also were pictured on labels for nine different shows.

Summary and Highlights of the Survey

The author found a total of six different carrier stamps and 32 different local stamps pictured on labels and other types of philatelic show souvenir items. In some cases, the labels or sheets were printed in different colors. As a result, the survey records 33 stamps on philatelic show labels, and 124 variations of local stamps.

Copies of the label, or copies of the stamp depicted on them, sometimes found their way into collections. Typically, the facsimile is very different from the original color and design, and only a novice collector would be fooled. But many of these were added to (and properly identified in) collections of forgeries and facsimiles. In particular, the collections of such renowned postal historians and authors as George Sloane and Elliott Perry included philatelic show labels, and also listed them in their articles. The survey that follows notes five carrier and 20 local stamps from stamp club labels and souvenirs that are listed in Larry Lyons' *Identifier*,¹ the principal reference source for forgeries and facsimiles.

One of the most popular of the local post stamps is the horse and rider design of Wells Fargo & Co. The vignette of a pony express rider has excited the imaginations of collectors and non-collectors since the 1860s. Not surprisingly, the stamps and the vignettes are the most frequently depicted local stamps on philatelic show souvenirs (**Figure 3**).

The Baltimore Philatelic Society has prominently featured the stamps of carriers and local posts that operated in Baltimore. One of the more interesting souvenirs is the sheet issued by the Baltimore Philatelic Society for the 1939 exhibition. It depicts two local posts and three carrier stamps used in Baltimore in the 1850s: Wiley's Baltimore One Cent Despatch, Griffin's One Cent Despatch, the Post Office One Cent Despatch stamp, the "eye" stamp and the "rider" stamp" (**Figure 4**). This souvenir sheet came in sets with different color print and different papers. I have also seen two types of proof cards, one which is numbered (**Figure 5**). All five stamp designs are listed in the *Identifier*.

One of the most striking philatelic labels was issued by the American Philatelic Society for its 1935 show in Washington, D.C. The APS printed a

¹ Larry Lyons, *The Identifier for Carriers, Locals, Fakes, Forgeries & Bogus Posts of the United States*, Vol. I-III (1998).

souvenir sheet of nine labels that featured a bright purple on white copy of Wiley's Washington City One Cent Despatch stamp. Entire sheets, as well as pairs and blocks, are very rare. Proofs were also printed in numbered (**Figure 6**) and unnumbered versions. This facsimile is listed in the *Identifier*.

An interesting and colorful souvenir card sheet was issued by the Philatelic Society of Cincinnati for the 1973 CINPEX show. It has facsimiles of the three Frazer & Co. stamps. The circular stamp is in black on green. There are four eagle vignette stamps in black on pink, green yellow and gray. And the Frazer's City Express Post rider stamp is printed in black on pink blue and yellow (**Figure 7**). All of these are also listed in the *Identifier*.

In some cases, the stamp club printed envelopes to hold the cards or sheets (**Figure 8**). These tend to have been discarded by collectors and are more scarce than the cards and sheets themselves.

A few clubs issued cards or sheets in numbered, limited editions. The two examples in the survey are the Fifth American Congress limited edition of a souvenir impression featuring Jenkins Camden Express issued in 1939 (**Figure 9**), and the numbered Utica Stamp Club sheet that features the bogus Utica Express stamp (**Figure 10**).

At least two stamp clubs have adopted stamps of a local post on their letterheads, programs, newsletters and other publications. The Chicago Philatelic Society features the Chicago Penny Post stamp (**Figure 11**). And the Washington Stamp Collectors Club uses Wiley's Washington City One Cent Despatch (**Figure 12**).

Similar Labels and Sheets

Although not part of the survey, other organizations have also used facsimiles of locals on their products. The Chicago Opera used the Allen's Despatch design on its covers (**Figure 13**). And the Western Airletter Company depicted the large blue American Mail Letter Co. stamp on certain of its envelopes (**Figure 14**). In addition, the country of Bhutan recently issued a postal souvenir sheet with pictures of 18 U.S. local post stamps. (**Figure 15**).

One of the more unusual facsimiles are copies of two Boyd's stamps that were produced as part of an annual fundraiser for the Brannockburn School, a private school located in Wales (**Figure 16**). For a number of years, David Stirling, a member of the UK Cinderella Club, a co-founder of the S. Allan Taylor Society, and a supporter of the school, had replicas of various international local stamps printed as part of sheets for a similar one to Christmas seals. I have recorded reprints of Boyd's 20L2 and 20L24 in blue on white, red on white and red on blue. The facsimile of the 20L2 is listed in the *Identifier* as Forgery B and the 20L24 is Forgery E.

For More Information

Collectors interested in philatelic show seals, labels and souvenirs can find additional information from a number of sources. Rigastamp makes available the entire 629 typed pages *Fields-Picklo Catalog of Philatelic Show Seals, Labels & Souvenirs* on its web site.² In addition, a *Catalogue of U.S. and Canadian Philatelic Exhibition Seals* that was edited by Stanley H. Wasson and Sandy Dolin in 1946³ lists 55 pages of philatelic exhibition seals that were issued through 1945.

The author would like to thank Herb Trenchard for his assistance in connection with the research and preparation of this article.

Table 1. Carriers on Seals & Labels

Scott Catalogue Number	Local or Carrier Issuer	Society or Show (Date)	Colors	Lyons Reference
1LB1-5	USPO Baltimore "Once Cent Despatch" Stamp	Baltimore Philatelic Society Golden Jubilee Year Exhibition (1939) Exhibition Sheets & Proof (Black on Cream Card)	Black on Gold Black & Green on Gold Black & Red on Gold Blue & Gold on White Green & Gold on White Red & Gold on White Black & Gold on White	Forgery J
1LB6-7	USPO Baltimore "Eye" Stamp	Baltimore Philatelic Society Golden Jubilee Year Exhibition (1939) Exhibition Sheets & Proof (Black on Cream Card)	Black on Gold Black & Green on Gold Black & Red on Gold Blue & Gold on White Green & Gold on White Red & Gold on White Black & Gold on White	Forgery E1

² www.cinderellas.info/philaexpo/intro.

³ Wasson and Dolin, published by Harvey Dolin & Co., New York (May, 1946).

Scott Catalogue Number	Local or Carrier Issuer	Society or Show (Date)	Colors	Lyons Reference
1LB8-9	USPO Baltimore "Horseman" Stamp	Baltimore Philatelic Society Gold Jubilee Year Exhibition (1939) Exhibition Sheets Proof (Black on Cream Card)	Black on Gold Black & Green on Gold Black & Red on Gold Blue & Gold on White Green & Gold on White Red & Gold on White Black & Gold on White	Forgery M
		Baltimore Philatelic Society "3 rd Exhibition- Peale Museum" (1935) Commemorative Stamp Souvenir Stamp Block of 4	Deep Red on White Black on White	--
5LB1-2	Whartons and Brown & McGillis	N.F.S.C. Third Annual Philatelic Convention (1958)	Blue on White	--
		Society of Philatelic Americans 61 st Annual Convention (1955)	Dark Blue on White Red on White Green on White	--

Scott Catalogue Number	Local or Carrier Issuer	Society or Show (Date)	Colors	Lyons Reference
8LB1	U S Penny Post (St. Louis)	Boston Philatelic Society, Inc.	Red, Brownish-Red Purple, Brown, Green, Blue, Dark Blue, Salmon, Light Purple and Light Green on White	Forgery D
10LB1-2	Bishop's City Post	Garfield-Perry Stamp Club Souvenir Impression with Small and Large Margins (1937)	Black on White	--

Table 2. Locals on Seals & Labels

Scott Catalogue Number	Local or Carrier Issuer	Society or Show (Date)	Colors	Lyon's Reference
Bogus	Albany Penny Postman	Fort Orange Stamp Club, Albany, NY (Souvenir postcard with facsimile of Albany Penny Postman) (1936)	Orange on White	--
3L3	Allen's City Dispatch USPO Baltimore "Horseman" Stamp	Chicago Philatelic Society (1952) Cancel on Original		--

Scott Catalogue Number	Local or Carrier Issuer	Society or Show (Date)	Colors	Lyons Reference
8L1-2	Barr's Penny Dispatch	The Lancaster Stamp Club (1935) Souvenir Sheet 3x3	Black on Dark Green	Forgery F (8L2)
		Lancaster County Philatelic Society (1990) Souvenir Sheet 3x3 1990 label on Stamp Show Cover	Red on White	
15L3-9	D.O. Blood *	Philadelphia Stamp Club Labels	Blue on White 3 Colors on White	--
15L5	D.O. Blood & Co.	Philadelphia Philatelic Society Souvenir Sheet of 3x4 (1955)	Black on White	--
15L7	D.O. Blood & Co.	SEPAD, Ninth Annual Stamp Exhibition (1946)	Black on White	--
20L30-34	Boyd's City Post	Smith's Post Office (1969) Souvenir Sheet 3x4 (Perforated) Souvenir Sheets 3x4 (Unperforated)	Red on White Black on White	--
		Individual labels on 1 st day cover		--

Scott Catalogue Number	Local or Carrier Issuer	Society or Show (Date)	Colors	Lyons Reference
20L30-56	Boyd's Mercury Series	Collectors Club of Dallas to commemorate presentation of Daniel Boyd, Director of Phillips auctioneer (April 8, 1983)	Blue on White Blue on Yellow	
		Individual Label on Cover		
29L1-2	Brown & Co.'s City Post Office	Cincinnati Stamp Collectors Club Souvenir Sheet (1936)	Brown on White	Forgery GG
		Chicago Philatelic Society Letterheads and Programs (Various Years)	Deep Orange on white wove paper Purple on Amber	Forgery F
		Chicago Philatelic Society Labels Perforated and Imperf.	Blue on White	--
		Chicago Philatelic Society (1935) Souvenir Sheet Souvenir Card with Sunken Panel (1935)	Brown and Brown Orange on White	Forgery H
		Chicago Philatelic Society 1937 Stamp Exhibition (1937)	Dark Violet Brown & Violet on White	--

Scott Catalogue Number	Local or Carrier Issuer	Society or Show (Date)	Colors	Lyons Reference
		Chicago Philatelic Society 60 th Anniversary Convention, LaSalle Hotel Chicago (1946)	Black on Orange	
		Chicago Philatelic Society (1952)	Red on Cream	Forgery I
		Chicago Philatelic Society Banquet Menu & Program (1952)	Red on Cream	
38L1	Chicago Penny Post	Chicago Philatelic Society 80th Anniversary Stamp Show (1966)	Brown on Mint Green	--
		Combined Philatelic Exhibition of Chicago (Compex 73) Souvenir Card (1973)	Red, Black, Blue, Brown Orange and Red on White	--
		Chicago Philatelic Society and Trans- Mississippi Philatelic Society Souvenir Card (1973)	Brown Orange on White	
39L	Cincinnati City Delivery	Society of Philatelic Americans 57 th Annual Convention &	Black on Beige Red on Yellow Red on Green Red on White	--

Scott Catalogue Number	Local or Carrier Issuer	Society or Show (Date)	Colors	Lyons Reference
45L1	City Letter Mail Express 1 Cent	Essex, NJ Stamp Club STAMPEX (1946)	Red on White Purple on White Green on White	--
69L1	Frazer & Co. City Dispatch Post	Philatelic Society of Cincinnati Souvenir Sheet (1973)	Black on Green	Forgery B (I)
69L2			Black on Pink Black on Green Black on Mustard Black on Gray	Forgery D (II)
69L3			Black on Pink Black on Mustard Black on Blue	Forgery B (III)
73L1	Grafflin's Baltimore Dispatch	Baltimore Philatelic Society Souvenir Sheet (1937)	Black on White	--
		Baltimore Philatelic Society Golden Jubilee Year Exhibition Souvenir Imperf. Sheets Proof (Black on Cream Card) (1939)	Black on Gold Black & Green on Gold Black & Red on Gold Blue & Gold on White Green & Gold on White Red & Gold on White Black & Gold on White	Forgery J

Scott Catalogue Number	Local or Carrier Issuer	Society or Show (Date)	Colors	Lyons Reference
153L1	Hackney & Bolte Penny Post	National Association of Precancel Collectors (1959) 4x3 Sheet Individual Label on Show Cover	Black on White	Forgery A
		Atlantic City Stamp Club (ATEX 1939)	Red on White Black on White	Forgery C
		Fifth American Philatelic Congress (Atlantic City 1939) Philatelic Cover	Purple on White	--
80L1-2	Hartford Mail Route	Collectors Club of Hartford (1936)	--	Forgery D
		Centennial of Fox & Co. (1947)	--	Forgery E
87L	Hussey Post “Running Messenger”	Czyl’s Penny Post On First Day Cover for Indian Head Penny Stamp (1978)	Red on Pink Blue on Buff	--
		Collector’s Club of Dallas Inc. (1983) Honoring Visit of David Boyd, Director of Phillips Auctioneers, London, at the time of Texas Stamp Dealers Association Stamp Fair Souvenir Sheets Block of 4	Blue on White Blue on Yellow	--

Scott Catalogue Number	Local or Carrier Issuer	Society or Show (Date)	Colors	Lyons Reference
89L1	Jenkins Camden Dispatch	Fifth American Philatelic Congress Souvenir Impression, Limited Edition of 150 (1939)	Red on Cream	--
		Commemorate 2 (1943) on Small Cards	Purple on White Gray-Green on White Brown on White	--
			Yellow-Green on White Orange on White	
		Association of South Jersey Stamp Clubs 18 th Annual Exhibition 100 th Anniversary of Camden Local Delivery Service Souvenir Card on Cover	Black on White	--
155L1	McGreely's Express	Pacific Philatelic Society of San Francisco (1902) Souvenir Overprint on Original Stamp	Black Overprint on Blue	--
		National Poster Stamp Society Reprint on Dietz Souvenir Sheet	Black on White	--

Scott Catalogue Number	Local or Carrier Issuer	Society or Show (Date)	Colors	Lyons Reference
112L2	One Cent Dispatch (Wiley's)	Baltimore Philatelic Society Golden Jubilee Year Exhibition (1939) Exhibition Sheets Proof (Black on Cream Card)	Black on Gold Black & Green on Gold Black & Red on Gold Blue & Gold on White Green & Gold on White Red & Gold on White Black & Gold on White	Forgery J
		American Philatelic Society (1935) Souvenir Sheet Proof (Numbered) Proof (Unnumbered)	Purple on White	Forgery O (Souvenir Sheet) Forgery O-1 (Single)
		Washington Philatelic Society Washington Jubilee Exhibition (1955) Small Souvenir Label	Black on Yellow	--
		Washington Stamp Collectors Club Letterheads and programs (Various Years)	Purple on White	--

Scott Catalogue Number	Local or Carrier Issuer	Society or Show (Date)	Colors	Lyons Reference
117L1	Pomeroy's	Peninsular State Philatelic Society 19 th Annual Convention	Green on White Red Blue on White	--
		Stamp Collectors Club of Toledo (1957)	White Black on White	--
156L1	Spauldings Penny Post	Bison Philatelic Society Buffalo, NY (1936)	Blue on Buff Red on Bluff	--
132L-4	Squires & Co. City Letter Dispatch	Jordan's Penny Post Sheet 1956 APS Convention Setenant at Blocks of 4 on Cover On Cover with Handstamp	Red on White Blue on White	--
133L1	Staten Island Express Post	Local Courier Post Modern Forgery on Covers (1976 & 1978)	Red on Blue Red on White	--
		Staten Island Philatelic Society 100 Year Anniversary On Cover	Red on White	--
		Staten Island Historical Society & Staten Island Philatelic Society (1967) on Commemorative Cover	Red & Blue on White	--

Scott Catalogue Number	Local or Carrier Issuer	Society or Show (Date)	Colors	Lyons Reference
139L1-8	3 rd Ave Post	Local Courier Post (1976 & 1982) On Cover Modern Forgery Of Lyon's Bogus 4	Light Orange on Light Blue Black on Yellow	--
Bogus	Utah Postage	Commemorative (1938)	Brown on White Green on White Red on White Purple on White	--
Bogus	Utica Express	Utica Stamp Club Sheet of 3x3 Imperf (1978) (Numbered)	Pink on White	Listed
143L3	Wells Fargo "Pony Express Rider"	American Philatelic Society Fourth National Philatelic Exhibition (1932) Sheet Sets of 4 "First Day Cover"	Black & Orange on White Green & Orange on White Brown & Blue on White Orange & Green on White Purple & Black on White	--
		Chicago Hobby Show (1935) (Fourth Annual) Small Souvenir Sheet	Red on White	Forgery DD

Scott Catalogue Number	Local or Carrier Issuer	Society or Show (Date)	Colors	Lyons Reference
		“Centennial” Stamps (1960)	Various Colors	--
		50 th Anniversary Issuance of US Stamp Numerous First Day Covers	Red on White	--
143L6	Wells Fargo (Shield Design of 181”	Society of Philatelic Americans Convention (1960) on Cover, Modern Forgery	Blue on White	--
144L9	Westervelt’s	Local Courier Post (1978) On Cover, Modern Forgeries	Purple on Pink Orange on Pink	
145L1-2	West Town	National Philatelic Museum SEPAD Seal (1953)	Gold and Blue on White	--
		International Philatelic Exhibition, N.Y. City (Pony Express Rider at bottom left) (1926)	Red on White Blue on White Purple on White Green on White	--



Figure 1. The first U.S. philatelic show label to feature a carrier or local stamp, issued in 1902 by the Pacific Philatelic Society of San Francisco.



Figure 2. 1932 International Philatelic Exhibit (NYC) label with pony express rider vignette from Wells Fargo & Co. stamp.

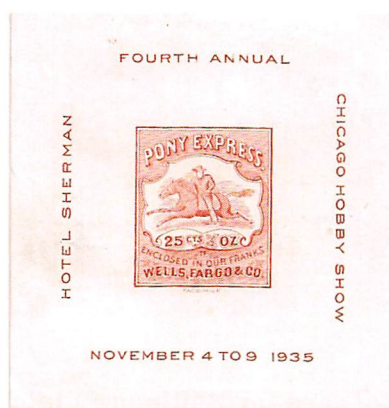


Figure 3. Wells Fargo & Co. stamp facsimile on 1935 Chicago Hobby Show small souvenir sheet.

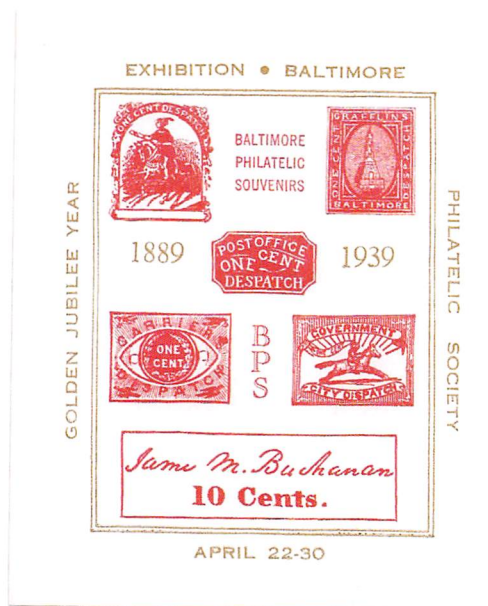


Figure 4. Souvenir sheet issued by the Baltimore Philatelic Society for its 1939 exhibition.



Figure 5. Scarce proof card for Baltimore Philatelic Society 1939 exhibition souvenir sheets.

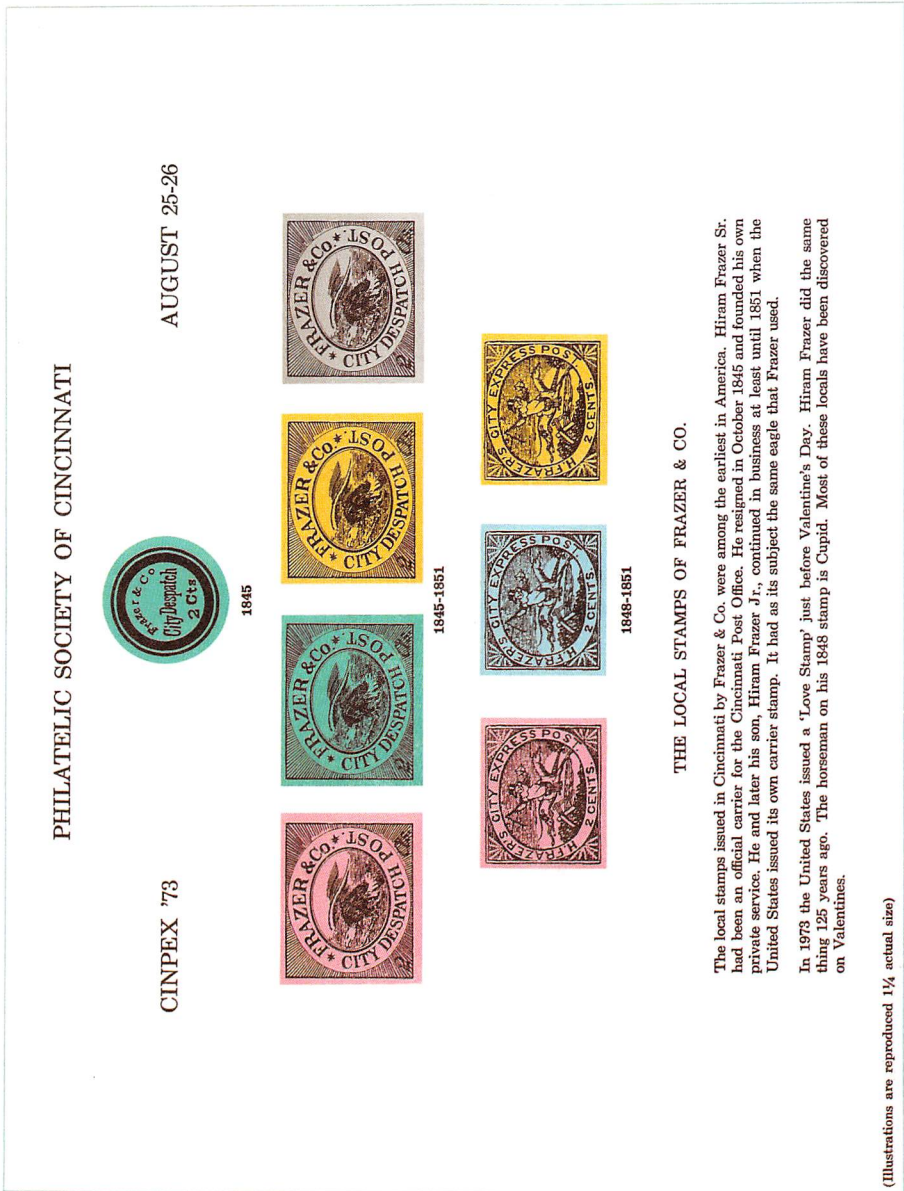


Figure 7. Philatelic Society of Cincinnati souvenir sheet for the 1973 CINPEX show featuring three Frazer & Co. stamps.

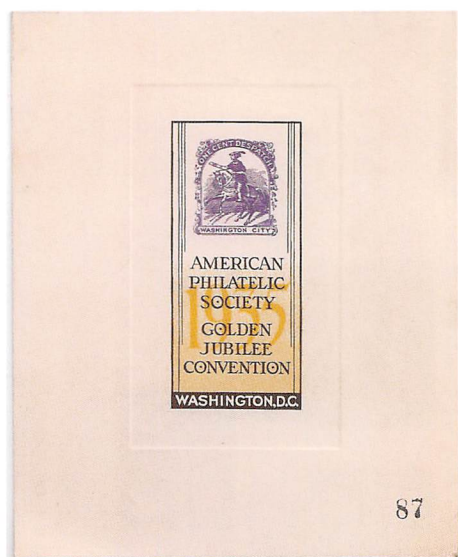


Figure 6. Scarce numbered proof card for American Philatelic Society 1935 label with Wiley's Washington City One Cent Despatch stamp.

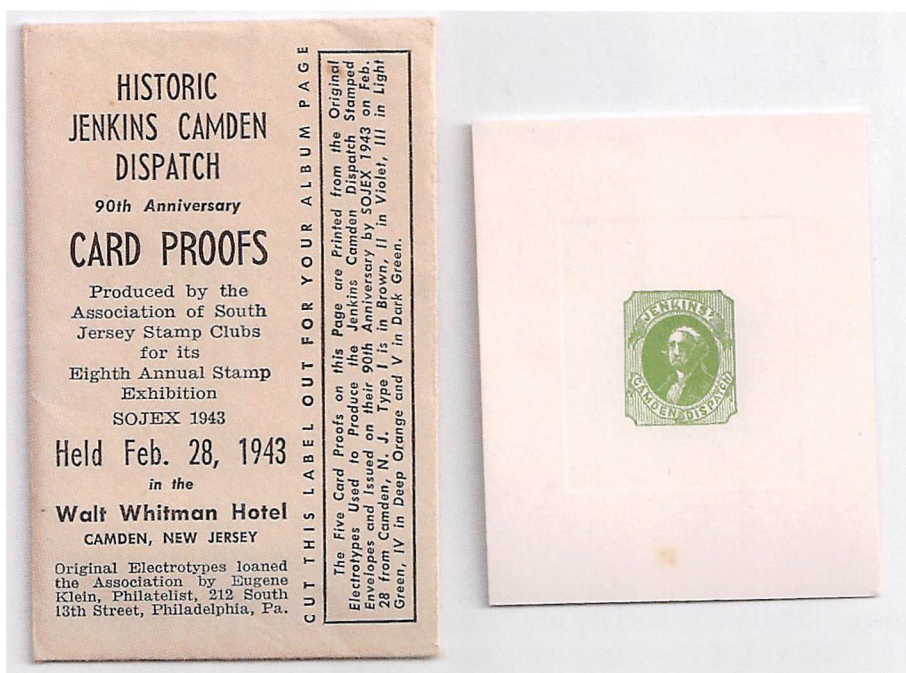


Figure 8. Examples of envelopes that held philatelic show cards and sheets.

UTICA STAMP CLUB



Utica Express-co.Centennial
1878-1978 ~~no. 0472~~ no. 0472

Figure 10. Numbered Utica Stamp Club sheet featuring bogus Utica Express stamp.

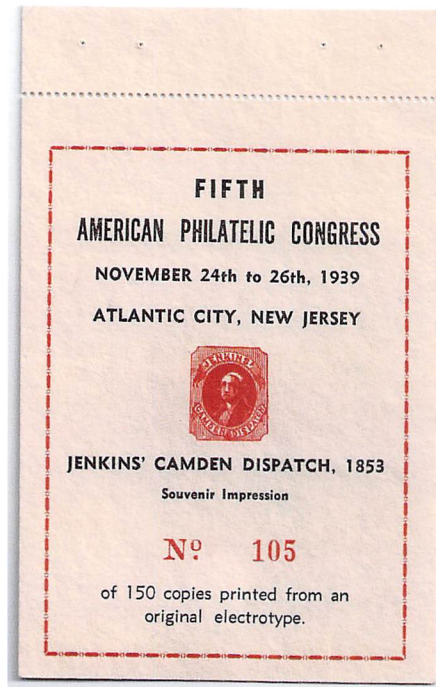


Figure 9. Numbered Jenkins Camden Express impression.

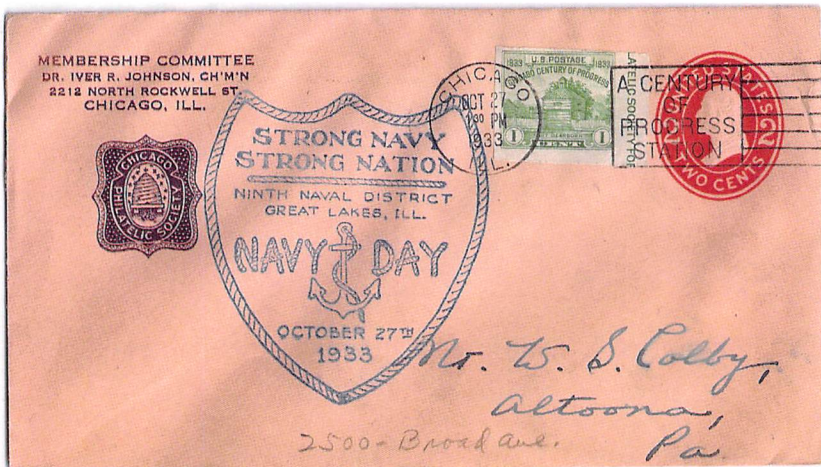


Figure 11. Chicago Philatelic Society cover with Chicago Penny Post stamp.

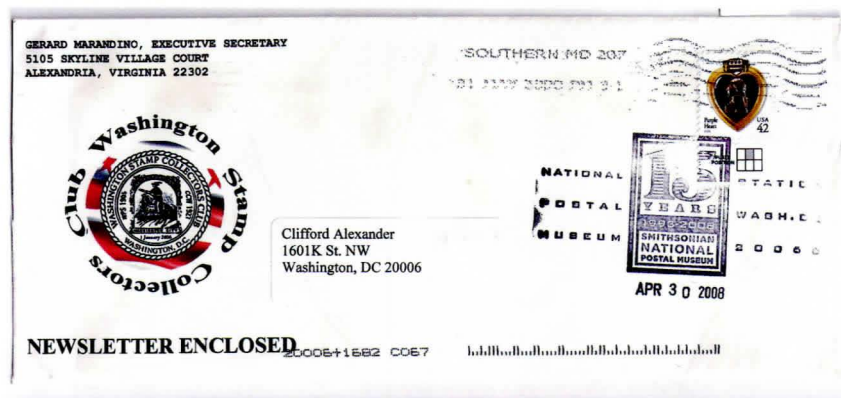


Figure 12. Washington Stamp Collectors Club with Wiley's Washington One Cent Despatch Post stamp.



Figure 13. Chicago Opera handstamp with Allen's Despatch stamp design.



Figure 14. Bhutan postal souvenir sheet with pictures of 18 U.S. local stamps.

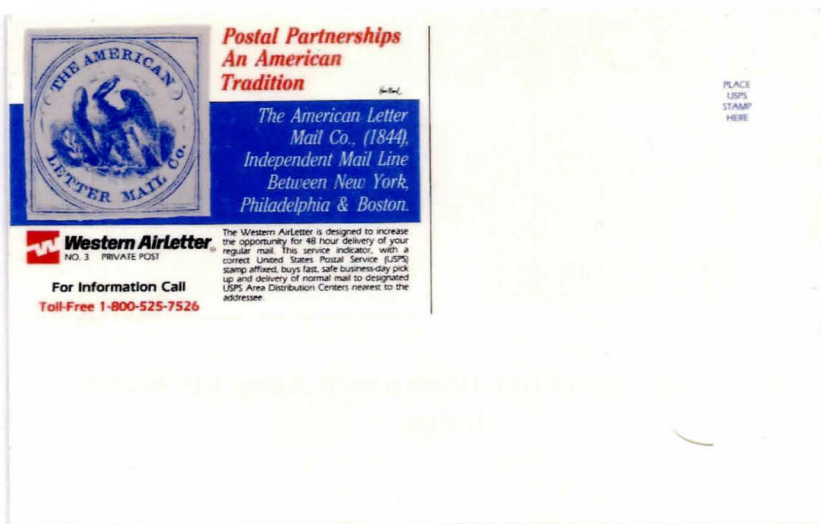


Figure 15. Western Air Letter Ad cover with large blue American Mail Letter stamp.



Figure 16. Part of Bannockburn School sheet of locals facsimiles with Boyd's 20L2 and 20L24.

New Forgeries – “To a Forger Unknown” (Apologies to John Steinbeck)

By

William W. Sammis

Surfing ebay is never boring. There is always the potential for encountering never-before-seen postal history¹ or at the very least being entertained by a seller who has clipped a stamp from the morning mail and is now offering it as “Rare!!” For those of us that collect Locals forgeries there are always over one hundred lots to sift through. Not long ago I purchased a small mixed lot of a dozen or so stamps. Most were “the usual suspects” but a few caught my eye; hence the bid.

Because of the pioneering work done on S.A. Taylor’s forms (individual stamps subjects assembled with others to make up a “form” to yield printed sheets from which the individual subjects are cut) by Sherwood Springer² and added to exponentially by Larry Lyons, grouping stamps by ink color and paper is never far from my consciousness. (Like it or not Larry probably dreams about such matters.) I noticed that four of the stamps were printed in purple on white paper. Using the Lyons Identifier³, a recent article in the Penny Post⁴ and my collection it became apparent that two of these forgeries were “new-finds” and that the other two stamps were uncommon.



Figure 1.



Figure 2.

¹ William W. Sammis. “The American Letter Mail Company – Kennebec Express: A Conjunctive Cover.” *The Penny Post* Oct. 2003 11(4): 18-21.

² Sherwood Springer. *Springer’s Handbook of North American Cinderella Stamps* 1980 9th Edition: 24, 1985 10th Edition: 56.

³ Larry Lyons. *The Identifier for Carriers, Locals, Fakes, Forgeries and Bogus Posts of the United States* Vol. I-III.

⁴ Larry Lyons. “Sanitary Fair Stamps – The Taylor Forgeries” *The Penny Post* July 2008 16(3): 46-52.

The **Figure 1**⁵ stamp is listed as the “Large Label” version of the Springside Post Office local stamp.⁶ No color is listed. **Figure 2** is Forgery B of the Bronson & Forbes City Express Post.⁷ It is listed as being known to have been printed only *Purple on White*.



Figure 3.



Figure 4.

Figure 3 is a forgery of the Brooklyn Sanitary Fair stamp (Scott WV-4). It is markedly different from the original (foliage on the branch and middle arrowhead) and also from Taylor’s forgery (thicker line under “BROOKLYN” extending almost to the “Y”, “T” and “A” of “POSTAGE” joined and more space between the “A” and the “G”).

Figure 4 is a forgery of the Martin’s City Post (Charleston, South Carolina) Carrier’s stamp. Following the Lyons *Identifier* convention the stamp:

Shares characteristics with the originals:

- Top border ornaments face up-up-right-up-up-up-up-down (as Original Pos. 3)
- Right border ornaments face down-left-up-left-left-up (as Original Pos. 3)
- Left border ornaments face up-down-up-down-left-left (as Original Pos. 3)
- The “2” has a wavy foot stroke (as Original Pos. 1 and 3)

Unique to the “Forgery C”:

Bottom border ornaments face left-left-down-down-down-right-up-up

Were these four stamps printed *se-tenant* in a form? That conclusion is likely presumptuous. (We can keep looking for multiple images still joined or remnants of stamps left through sloppy separation of the sheet.) However, given the shared ink color, the relative scarcity of these four stamps and the fact that they surfaced together from the same collection, a much smaller leap of faith is required to speculate that they were all created by the same artist/forgery. (I have ruled out

⁵ All figures enlarged to 150%.

⁶ Lyons *Identifier* Vol. III: 978.

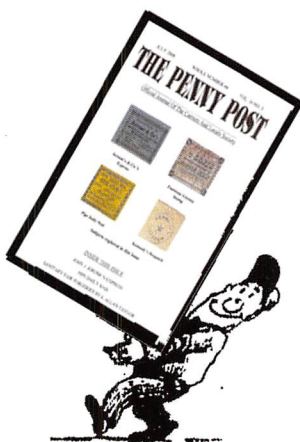
⁷ *Ibid* Vol. I: 268.

S.A. Taylor as the perpetrator because of the scarcity of these stamps, the fact that to date they have been found printed in only one color and the fact that Taylor made his own forgeries of the Brooklyn Sanitary Fair, Bronson & Forbes' and Springside stamps.)

A challenge to the membership: Can we flesh out this forger's work?

- Do members have forgeries in this purple shade of ink? (Using my paradigm they will perhaps be uncommon stamps. A possible candidate might be the Forgery J of the East River Post Office stamp.⁸)
- Do members have any of these four forgeries (one is a fantasy) printed in different ink or on a different paper?

M O V I N G
Let us know.



⁸ *Ibid* Vol. I: 446-447.

U.S. Postal History.

When selling or buying, come to the firm that has been a key purveyor of America's great classic covers since our inception in 1940.

Are you on our catalog mailing list?

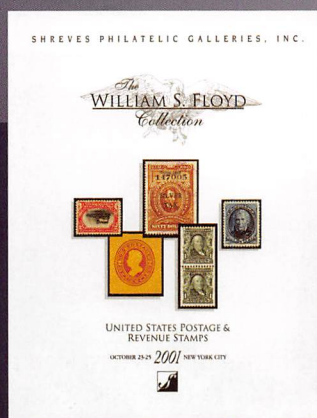
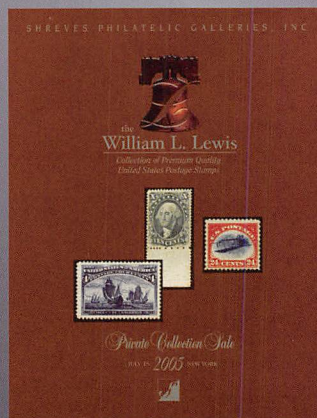
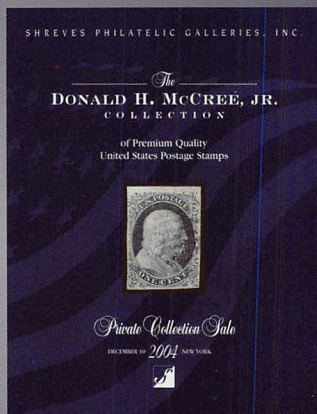


Your collection deserves the attention of the Harmer expert philatelists and auctioneers. Call us to learn the many ways we can help you achieve the highest possible value when you are ready to sell.



H.R. Harmer, Inc.
www.hrharmer.com

18061 Fitch
Irvine, CA 92614 USA
Phone: 203.702.8490 | Fax: 203.702.8491
E-Mail: hrharmer@hrharmer.com



OUR CATALOGS SPEAK VOLUMES...

A Shreves auction catalog says a great deal about our company. Unsurpassed attention to detail. In-depth philatelic knowledge. Award-winning marketing expertise. Record-breaking prices realized. Teamed with our famous "First Class" service for every client, Shreves has been able to attract many of the most well-known and acclaimed collections to come on the auction market. Discerning buyers and sellers alike know that high quality U.S. and foreign stamps and covers deserve a superior catalog – and auction firm – that continues to set the standard for excellence.



SHREVES
PHILATELIC GALLERIES, INC.

800 556 STAMP 800.556.7826
www.shreves.com

Dallas & New York

14131 Midway Road, Suite 1250 • Addison, Texas 75001-9829 • 972/788-2100 • FAX 972/788-2788
145 West 57th Street, 18th Floor • New York, N.Y. 10019 • 212/262-8400 • FAX 212/262-8484

Important San Francisco Local Post Covers at the Bill Tatham Sale

By
Larry Lyons

On April 23-26, 2009, the firm of Schuyler Rumsey auctioned the William C. Tatham collection of California postal history. This collection contained a few rare San Francisco local post covers which will be the focus of this article.

Gahagan & Howe

The cover shown in **Figure 1** addressed to Miss Wells at the north side Francisco Street, between Stockton and Powell Streets was lot 1472. The letter contains an invitation to Miss Amelia Wells. The handwritten invitation says:

1865

Miss Amelia Wells,

Will you give me the pleasure of your
Company next Saturday morning, 6th, on
board the Steamer "Contra Costa" in time
to sail at 9 O'clock for Alameda. Plenty
to eat there. Powell St. S. School will go
on their excursion at that time.
I am in hopes to see you there.

Yours truly

Elias M. Fairbush

My previous research indicates the following:

Dennis Gahagan and C.E. B. Howe bought Robinson's & Co. San Francisco Letter Express from John C. Robinson in 1864. The G&H office was located at 423 Washington Street at the southeast corner of Sansome Street. This was very close to the post office and only two blocks from the Wells, Fargo office. Gahagan & Howe sold out to Loomis early in 1865.

The Gahagan & Howe cover shown in **Figure 1** can be dated to May 6, 1865, May being the only month in 1865 in which the 6th is on a Saturday. So the contents helped date this cover. Extensive research seems to indicate this is the only recorded example of this handstamp.

Lot 1473 is pictured in **Figure 2** and is another Gahagan & Howe stampless cover. Gahagan & Howe did issue adhesives, 70L1 to 70L4 but no examples have been recorded genuinely used on cover. About 13 stampless covers are recorded with the oval handstamp.

California Penny Post

The envelope shown in **Figure 3** was lot 1444 in the Tatham sale. This type of envelope is presently unlisted in the *Scott Specialized Catalogue*. It deserves a

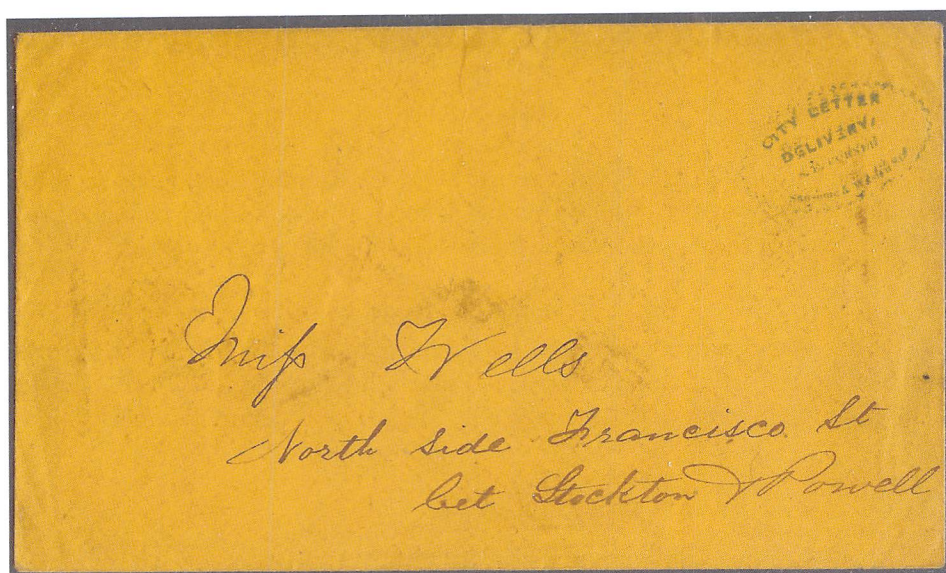


Figure 1. The only recorded example of this type handstamp used by Gahagan & Howe. The cover has been dated by the contents as May 6, 1865.

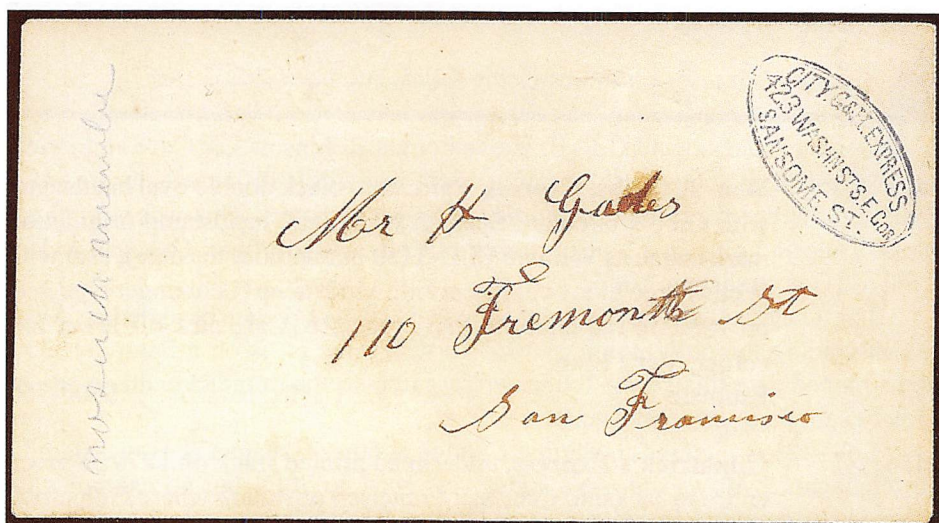


Figure 2. An example of the handstamp used by Gahagan & Howe.



Figure 3. The only reported used example of this type of California Penny Post envelope. The author suggests a *Scott Catalogue* listing. “Secured” is misspelled with a “c” in place of the first “e”.



Figure 4. One of two recorded examples of this frank of the San Francisco Letter Express.

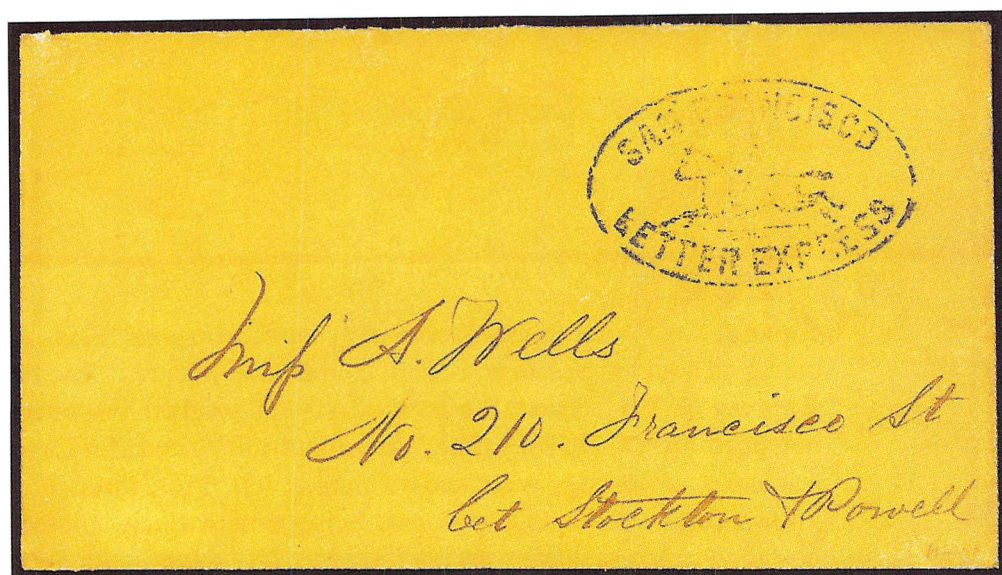


Figure 5. An example of the San Francisco Letter Express running horse handstamp. This letter is from the same correspondence as the letter carried by Gahagan & Howe shown in Figure 1.

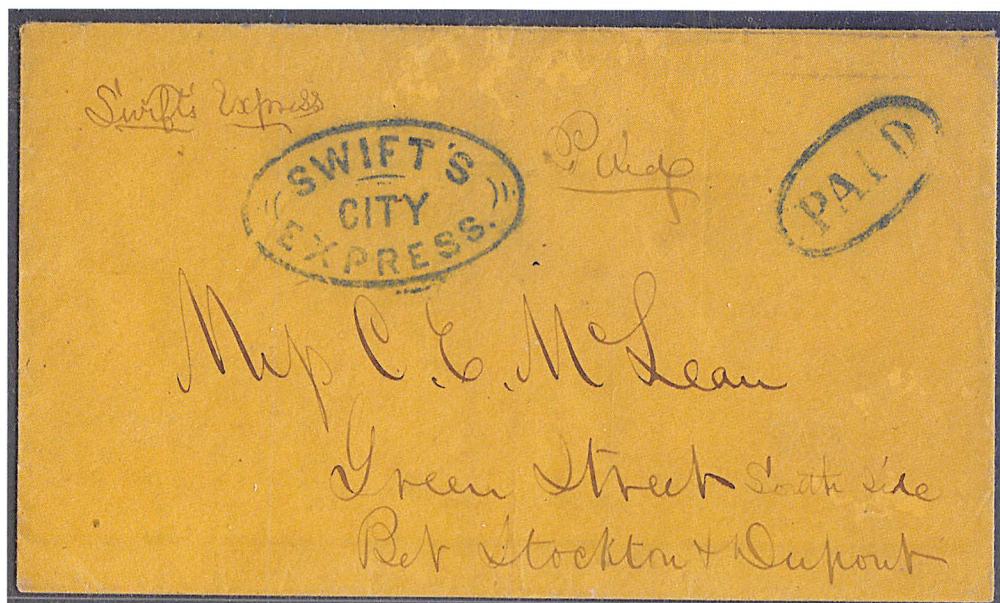


Figure 6. One of three recorded examples of the Swift's City Express handstamp, a local post that operated in San Francisco.

listing as do several other types of unlisted California Penny Post envelopes. See the article by this author in the July 2005 issue of *The Penny Post*, pages 11-50. The envelope type pictured here in **Figure 3** is shown on page 43 of that article and a suggested listing of 34LU18a was proposed. This is the only recorded used example of this style envelope. This cover sold for \$2,415.00.

San Francisco Letter Express

The cover shown in **Figure 4** was lot 1547 in the Tatham sale. According to this writer's research only two examples are recorded. Another example of the San Francisco Letter Express with the running horse oval handstamp was offered in lot 1546, see **Figure 5**. The writer is Elias Fairbush and the addressee is Miss Amelia Wells, from the same correspondence as the Gahagan & Howe cover shown in **Figure 1**! Carnes acquired the San Francisco Letter Express in 1865 and William Loomis purchased Carnes & Co. in late 1866 or early 1867. As indicated earlier, Loomis bought Gahagan & Howe in early 1865. Elias Fairbush continued to use the local post as ownerships changed.

Swift's City Express

The Swift's City Express has long been recognized as a local delivery post in San Francisco. They are listed in the San Francisco City Directory of 1856 as a "Dispatch" on Anthony Street, 1 door down from the mission. E. Swift is mentioned again in 1859 having offices with Wells, Fargo & Co. Three examples of this handstamp have been recorded. **Figure 6** shows the example from the Tatham sale which was offered in lot 1551 and sold for \$2,070.00. Lot 1557 offered the only manuscript example of Swift & Co. This cover is shown in **Figure 7**. The Union City Express carried this December 22, 1854 folded letter from Alvarado in Alameda County to Wells Fargo. The letter was handed over by Wells Fargo in San Francisco to Swift & Co. for local delivery. This is an example of a triple conjunctive use. This is the only recorded example of the Union City Express and the only manuscript example of Swift & Co. This cover sold for \$3,737.50.

The Tatham sale contained a great many rare Western Express covers and the seven San Francisco local post covers shown and described in this review.

The realized prices given in this article include the buyers premium.

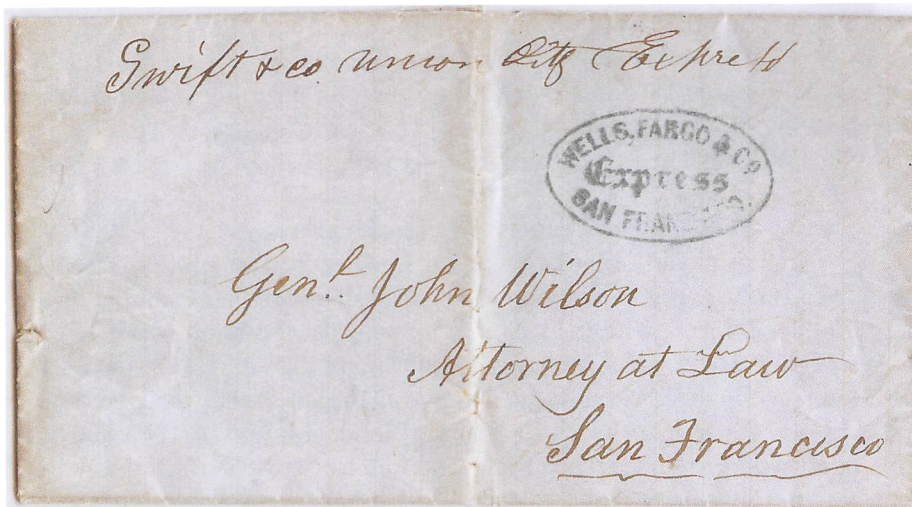


Figure 7. The only recorded manuscript example of Swift & Co. A companion cover showing the handstamp is shown in Figure 6.



Figure 8. Cover from Salt Lake City in Utah Territory (UT) to New York City where it was delivered locally by Boyd's. The Boyd's handstamp is clearly dated December 14, 1867. This cover was Lot 1818 in the Bill Tatham sale. The cover sold for \$776.25.

If you collect high quality U. S.



Now selling postal history

Go online at www.alanecohen.com to view this month's

Stamps and postal history listings in full color.

Want Lists graciously accepted with sensitivity to
your individual needs and concerns.

ALAN E. COHEN

P.O. Box 929 • Cathedral Station • New York, N.Y. 10025

Telephone: (212) 280-7865 • Fax: (212) 280-7864

Email: alanecohen@mindspring.com

ASDA, APS, Classics Society, CCNY, USSS, Carriers & Locals Society, APC

Serving collectors since 1974

Robison & Co. Simplified Identification Tips

By
Clifford Alexander

Robison & Co. apparently operated as a post in Brooklyn, New York, from about 1855-1856, and issued only one type of adhesive. Scott Trepel has reported that there are only seven known genuine copies off cover and one on cover.¹ The originals have a number of plate variations.² On a number of genuine copies, the line in the southwest corner of the envelope does not extend to the seal, and in some genuine copies, portions of the "C" in "CENT" has worn away. The Lyons *Identifier* describes nine forgeries.³ In addition, the following list includes a new modern forgery that appears to have been copied from Forgery F.

ORIGINAL:



The top arm of the "E" in "CENT" rises slightly.

FORGERY A:



The lower leg of the ampersand curves down and points exactly to the NE corner of the envelope.

FORGERY B:



The "O" of "ONE" is much smaller than the "N" and the ampersand has a dot on the top circle at 3:00.

FORGERY C:



Both "C" and "D" were printed by Taylor and are similar. In Forgery C, the bottom leg of the ampersand and upright of the "T" are detached. Forgery C is apparently only found on glazed surface colored paper.

¹ See Keyword "Robison" utilizing Siegel Powersearch at www.siegelauctions.com.

² Stephen Gronowski, "A Robison & Co. Plate Variation," *The Penny Post*, Vol. 8, No. 4, at pp. 47-48 (July 2000).

³ Larry Lyons, *The Identifier for Carriers, Locals, Fakes, Forgeries and Bogus Posts*, p. 924, Vol. III (1998).

FORGERY D:



This is similar to E except the letters are thicker; and the two arms of the “T” in “CENT” are the same length.

FORGERY E:



The left arm of the “T” in “CENT” is shorter than the right.

FORGERY F:



The oval is solid, rather than double line; and the seal is thin and elongated.

FORGERY G:



The middle arm of the “E” in “CENT” and bottom arm of the ampersand are detached.

FORGERY H:



The two arms of the ampersand form a very wide “C”; there is an extra frontline around the stamp; and the second “o” in Robison is very square.

FORGERY I:



This is a poorly printed copy of H from the “Gold Sheet.”

MODERN:



This is a modern forgery copied from Forgery F that has a break at the top right line of the envelope.

Update to the American Stampless Cover Catalog

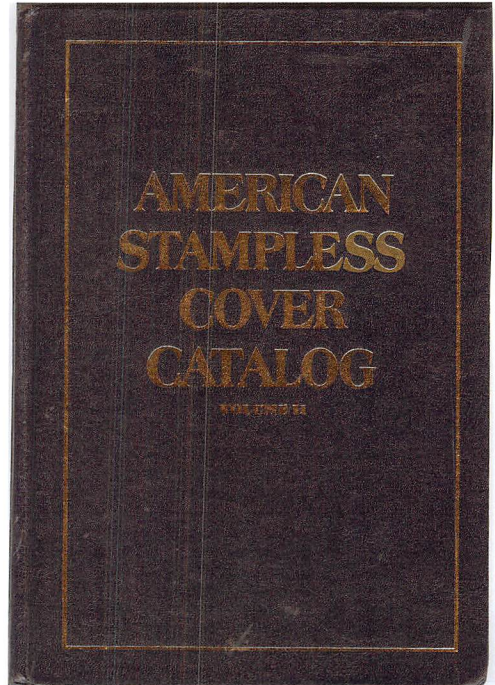
By
John D. Bowman

The US Philatelic Classics Society acquired the rights to the ASCC, and plans to update it under the editorship of Van Koppersmith. The beginning of Volume II includes the sections on Private Letter Mail and Express Carriers and Local City Delivery Post Markings that many of us are familiar with.

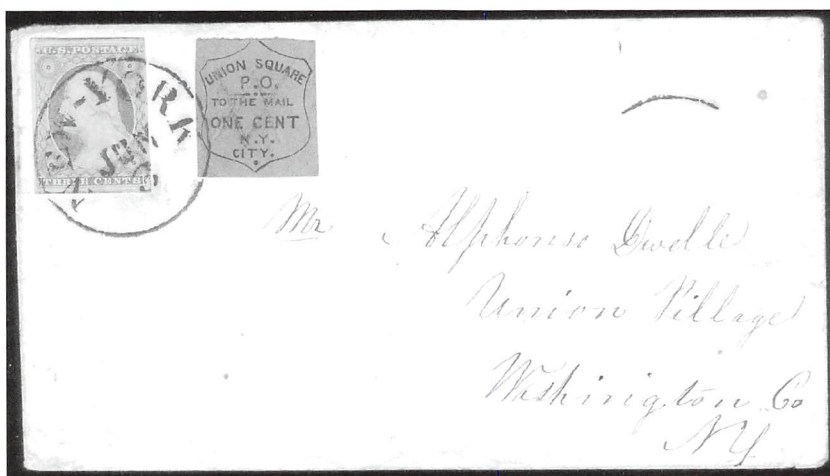
The updated catalog will be printed as a single hard-bound volume, including everything in last published in three volumes except for Confederate States of America, which is being updated by the Confederate Stamp Alliance.

The web site for contributing to the update of the ASCC is www.stamplesscovercatalog.com. Any of us can contribute directly for the parts that we know. For example, I will first review the Boyd's and American Letter Mail Company sections and submit updates for them.

I would like to encourage each of you that use the ASCC to help in the updating process at your own pace by utilizing the web site.



The finest collections are built with
passion and precision.



Please visit our website at:
www.rumseyauctions.com

email: srumsey@rumseyauctions.com

Schuyler
Rumsey
Philatelic
Auctions

47 Kearny Street
San Francisco
California 94108
t: 415-781-5127
f: 415-781-5128

Please note our new address and phone numbers.

Local Posts Literature and Auction Catalogs

Listed below is a sampling of the titles available from our inventory
of Locals and Carriers related titles.

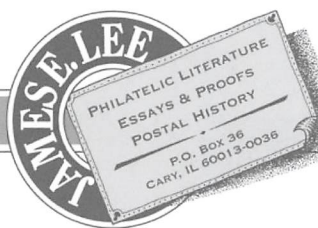
For a complete listing visit our website: www.jameslee.com.

Books

- *The Fresno and San Francisco Bicycle Mail of 1894*, Cooper, 1982, 134p, HB. \$50.00
- *The Chatham Square Post Offices and Swarts City Dispatch Post*, Hall, 1941, 34p, CC. \$10.00
- *Handbook of Private Local Posts*, Hurt & Williams, 1947 ed., 169p, HB. Covers local posts of the world (Billig's handbook no. 6). \$40.00
- *Boyd's Local Posts in New York City: 1844-1882*. Patton, 49p, CC. \$15.00
- *The Local Posts in Brooklyn, NY: 1844-1882*, Patton, 28p, CC. \$10.00
- *Private Local Posts of the United State: Volume 1 – New York State*, Patton, 1967, 350p, HB. \$45.00
- *U.S. Letter Carrier Stamps of Philadelphia under the Fee System*, Perry, 1954, 18p, CC. \$10.00
- *Byways of Philately: Privately Owned Posts and Early Locals*, Perry & Hale, 1966, 281p, HB. \$37.50
- *One Hundred Years Ago*, Perry & Hale, 1942, 68p, CC. Story of City Dispatch Posts. \$30.00
- *Pat Paragraphs*, Perry, 1981 reprint, 648p, HB. \$55.00

Auction Catalogs

- *Amb. J. William Middendorf II Collection of Carriers and Locals*, Frajola net price sale no. 4, • 1990, 787 lots, illustrated. \$25.00
- *Alfred Caspary Collection of U.S. Carriers and Locals*, HRH, 1957, 1046 lots. \$40.00
- *Cyril F. dos Passos Collection*, Robbins, 1981, 299 lots of Boyd's, Hussey's and Swart's. \$15.00
- *Josiah K. Lilly Collection – Part V*, Siegel, 1967, 402 lots of locals and carriers. \$35.00
- *David Golden Collection of U.S. Carriers and Locals*, Siegel, 1999, 1620 lots. Two vol. HB \$100.00. Three vol. SB in slip case \$75.00.



Order by phone, fax or e-mail. Terms: check, Visa or Master Card info with order. Shipping: \$5.00 for the first book, \$1.00 for each book thereafter. Foreign orders: additional postage.

James E. Lee LLC
P. O. Box 36-LC, Cary IL 60013-0036
(847) 462-9130 • Fax (847) 462-9140
E-mail: jim@jameslee.com

Visit our website: www.jameslee.com

Use this direct link to check our large stock of Confederate literature:
www.jameslee.com/books.htm

Sammis' Four Purple Stamps

My Opinion: They're Taylor Creations

By
Larry Lyons

Identifying Taylor forgeries is easy when the colors of the ink and paper are quite unique and easily recognized. The converse is also true—Taylor forgeries can be very difficult to identify when the color of the ink and the color of the paper is bland, common and ordinary. Bill Sammis is right about my spending a lot of research time on this subject which will hopefully find its way to completion or lead to an admission that a full conclusion cannot be reached. Let me present to you my argument that the purple on white (or amber) stamps presented in the previous article are Taylor creations. See **Figure 1** here.

Multiple Forgeries on the Same Subject

Bill Sammis points out that S. Allan Taylor already has a forgery of the Bronson & Forbes and Springside stamps namely Forgery B of the Bronson & Forbes stamp which he produced in at least 25 different colors and the only forgery of the Springside Post Office stamp uncovered to date. This forgery can be found in 7-14 colors. Let's take a look at other forgeries and see if Taylor made more than one forgery of the same subject.

Taylor is credited with making the following:

Forgeries D & E of The American Express Co.
Forgeries C & E of Barr's
Forgeries C & D of Bentley's with variations C1 & D1
Bogus A & B of Bowery Post Office
Forgeries D & E of Boyce's
Forgeries B & C of Boyd's 39 Fulton St. Stationery
Forgeries C & E & F & I of the N.Y. Brady & Co.
Forgeries A & B of Brainard
Forgery B and Bogus 2 of the Broadway Post Office
Forgeries 2A, 2B, 2C and 2AA of the Charleston P.O.
Forgery IB and IC of Cumming's
Bogus 4 & 5 of C & W Bridge Despatch
Forgeries B & E of Essex Letter Express
Forgeries C & D of Floyd's
Forgeries B & C of Gordon's
Forgeries B & C of Government City Despatch
Bogus 1 & 2 of Hackett's
Forgeries B & D of Hanford's
Bogus 1 & 2 of Hunt's
Forgeries H & J of Jenkins
Bogus 1, 1A, 2, 2A, 3, 3A, of Ker's also 4, 4A, & 5

Forgeries A & C of Kidder's
 Forgeries 1 & 2 of E. D. Prince Letter Despatch
 Bogus 1 & 2 of J. M. Chute Letter Despatch
 Bogus 1, 2 & 3 of Mendant's City Express
 Forgeries D & E of Messenkope's
 Bogus A, B & C of Moody's
 Forgeries B & Ba of Pomeroy's
 Bogus 1, 2 & 5 of Roadman's
 Forgeries C, D, & E of Robison's
 Forgeries E & F of Russell's
 Forgeries G & J & K of Smith's
 Bogus 1, 2 & 3 of Stringer & Morton
 Bogus 2, 3 & 4 of Walker's
 Bogus 1 & 2 of Walton
 Bogus 4, 5, 12 & 14 of Warwick's
 Forgeries B & D of (Wiley's) One Cent Despatch
 Forgeries 1A, 2, and 3 of Winslow

This is just to mention a few! There are lots more where Taylor produced a forgery and a bogus stamp of the same Post. It may also be true that some of the forgeries are not yet attributed to Taylor and further research which is now underway will reveal these stamps to be Taylor forgeries.

I conclude there is ample evidence in the above list that Taylor created more than one stamp of many different posts.

Scarcity

I do not believe that scarcity rules out S. Allan Taylor as the forger of the purple stamps in question or of making any forgery. Taylor made forgeries or bogus stamps of many scarce or rare posts. This is not what we mean by scarcity in this case. Scarcity refers to the difficulty in obtaining a said stamp due to the low number of known examples. It also refers to a lack of multiple colors of the same forgery which would result in more known examples. Scarcity is given as an argument against Taylor being the forger because his *modus operandi* was usually to produce many different colors of the same forgery. For example, the Carnes Local Post Forgery A stamp can be found in about 70 different colors. He also made multiple printings of some of his "forms" in large quantities. We know this because certain Taylor forgeries can be found with a great number of duplicates of the same color. However, it is also true that many Taylor forgeries are scarce. For example I presented the Chestnut St. Line Bogus Stamp in the October 2008 issue of *The Penny Post*. This stamp is probably missing from most forgery collections and is scarce. Bouton's Manhattan Express Bogus B has only been reported in two colors. **Figure 2** is an example of a bogus stamp attributed to S. Allan Taylor entitled "Express Post". This stamp has been reported in red. No other color is known. Yet there are several Taylor forgeries of other subjects which will match this stamp such as Clinton's Forgery C, the LeBeau bogus stamp, Donaldson's Bogus 1 and Priest's

Forgery D1. These are shown in **Figure 3**. The Clinton's Forgery C is also only known in the one color-red, however there is evidence of multiple printings in the same color as evidenced by the Clinton Forgery shown in **Figure 4** which is a darker red. This may prove the Clinton's subject appeared in two different forms. It thus far has not appeared as printed in another color. Other examples of only a single color printing by Taylor are as follows:

Pips, Forgery B only found in black/yellow.

Hoyt's Bogus 1 only found in black/pink V.L.

Another scarce local stamp forgery made by Taylor is the Jones City Post, Bogus 1 which is only found in black/pinkish light purple PCT and in black/lilac gray PCT. See **Figure 5**.

Looking into the larger picture of Taylor forgeries gives us more insight into his productive thinking. For example the Houston Confederate Provisional Bogus 1 is attributed to Taylor and is only found in carmine/blue and the Houston Confederate Provisional Bogus 2 attributed to Taylor and is only found in blue/white. See **Figure 6**.

Research and study of Taylor's foreign stamp forgeries reveals a lot of information previously unknown to local stamp collectors. I was able to find many stamps produced by Taylor in only a single color. Examples of British Guiana, British Honduras, Paraguay, and Servia are shown in **Figure 7**. These have been reported only in the color shown here. Other foreign forgeries made by Taylor follow the same format as we know about the local stamps, namely they were produced in multiple colors. **Figure 8** is an example of a Hamburg local called "Th.Lafrenz" which Taylor forged three times and in multiple colors each time.

Proposed Proof

The purple on white (really amber) stamps shown in the preceding article by Bill Sammis are in my opinion (and in Bill's) similar in color and paper. We both believe they were produced at the same time. This is substantiated by the rarity of each of the stamps. I asked Bill to send me the stamps for closer study since I only own the Bronson & Forbes Forgery C stamp. I had not discovered I had this stamp in my forgery collections until recently. Bill was happy to comply from his perch on cloud nine where he has been since he won a Grand Award at NAPEX for his fabulous ten frame exhibit on "The Expresses of Maine" which is his main interest. Bill and I correspond regularly. Bill also won the 2008 Editor's Choice Award for his article on John J. Jerome's Express. I have pointed out to Bill that the Editors' Choice Award is much rarer than his recently won Grand Award. The awards themselves are similar, one being crystal and the other crystal-like. I have digressed, but this is a hobby and we're supposed to have fun.

With the Sammis stamps in hand I looked for other examples of this color ink and paper which could have been produced at the same time. I came up with the group shown in **Figure 9**.



Figure 1. The four stamps presented by Bill Sammis. The ink and paper link the four stamps together.



Figure 2. The “Express Post” bogus attributed to S. Allan Taylor. The stamp has only been reported in this one color.



Figure 3. Forgeries attributed to Taylor in the same ink and paper as the forgery shown in Figure 2.



Figure 4. A printing of the Taylor Clinton's Penny Post forgery in a darker color ink. Perhaps Figure 3 is a dry ink impression.



Figure 5. Taylor's Jones City Express Post forgeries reported in only two colors. These are rare forgeries.

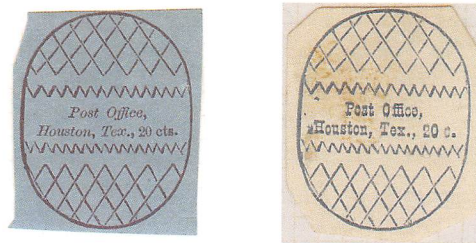


Figure 6. Two rare forgeries attributed to Taylor.



Figure 7. Foreign stamp forgeries attributed to Taylor. These are reported in only one color.



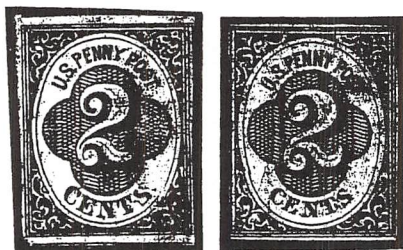
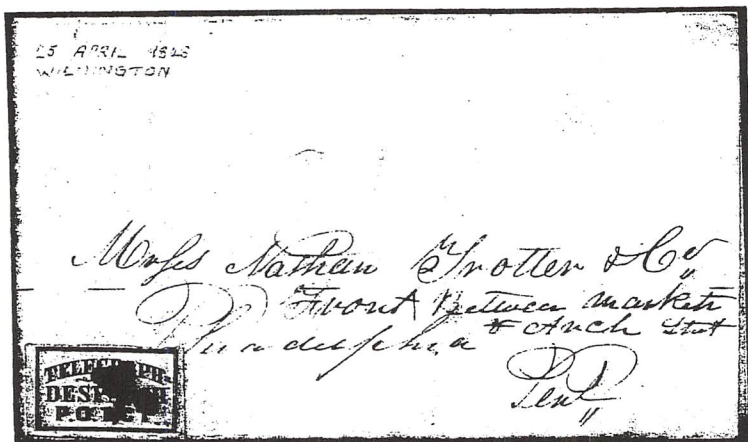
Figure 8. A Hamburg local attributed to Taylor. Taylor made these three different types.



Figure 9. Forbes City Express Post Forgery D. The paper and ink matches to two known Taylor forgeries. This group is offered as proof that the four stamps from Figure 1 were made by Taylor.

Buying, Selling & Appraisals

- ★ Classic U.S. Stamps & Postal History
- ★ U.S. 19th Century Proofs & Essays
- ★ Confederate Stamps & Covers



STANLEY M. PILLER

800 S. Broadway • Walnut Creek, CA 94596

Phone (925) 938-8290

Fax (925) 938-8812

Email: stmpdlr@aol.com

Baltimore Blues: The Baltimore Carrier Department Handstamp

By
John D. Bowman

Baltimore was one of several large cities which issued its own City Carrier Department Stamps. These include the familiar “words only,” “eye,” and “horse and rider” adhesives, Scott nos. 1LB1–1LB9.

Less well known is the rare blue circular Paid/1 Cent/Carrier handstamp used on stampless covers prior to 1863 (**Figure 1**).



Figure 1. Blue Baltimore carrier handstamp (ASCC tracing).

This article illustrates all five known stampless covers, updating by one the number known to specialists beforehand.

Early in his career, Elliott Perry wrote in Stanley Ashbrook’s 1938 Volume II of the One Cent Stamp of 1851-1857 that “Two examples have been noted. The Frank A. Hollowbush collection contains a printed Baltimore circular of December 17, 1855, stampless and delivered locally on which this marking was struck in blue. Mr. John A. Klemann has shown the blue Baltimore carrier stamp (Type C 1) with part of this marking in black.” Mysteriously, he did not update this information in his series *Pat Paragraphs*.

The Hollowbush example is shown in **Figure 2**, and is in fact an outer wrapper with an offset of an enclosed circular, rather than including the circular itself.

The well-known Baltimore collector Denwood N. Kelly wrote “The Carrier Service in Baltimore Prior to 1863” in the *Collectors Club Philatelist* Volume 52 Number 1 of 1973. He noted that “Only one handstamped postal marking is definitely attributed to the Carrier Department, it having been designed for use on bulk mailing of circulars, pamphlets, notices, etc., to avoid waste of time and adhesive stamps... Very occasionally this marking was used as a canceller, probably in error or in haste to quickly cancel the stamps on a large number of letters.” He illustrates an example on a blue “Eye” carrier stamp on cover.



Figure 2. December 15, 1855 wrapper noted by Perry in Ashbrook's 1938 Volume II One Cent 1851-1857. Ex-Frank Hollowbush. Offset of circular on wrapper. Author's collection.



Figure 3. Small locally addressed envelope, ex-Denwood Kelly. Compliments of Pat Walker.

Two covers are known without an address, only the name of the addressee, with this handstamp (Figures 4 and 5).

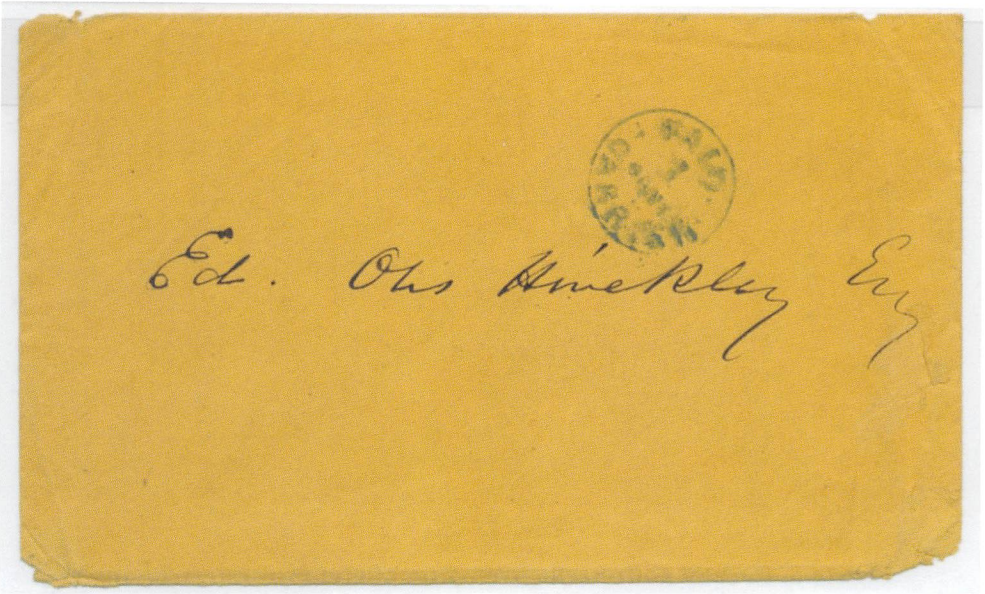


Figure 4. Cover with addressee's name only. Author's collection.



Figure 5. Cover with addressee's name only. Ex-Cal Hahn, who noted it contained a "printed form invitation of July 19 (Wed.) which is 1854." Oddly, he also noted it was addressed to a street address in Baltimore. Compliments of Ron Cipolla.

The fifth known stampless cover bears a street address (**Figure 6**).



Figure 6. Locally addressed cover. Compliments of Larry Lyons.

Conclusions

Two of the five covers bear a local address. One shows definite indication of an enclosed circular. The other two are envelopes with no street address or contents. The handstamp was used at least in 1855, during the 1850-1857 period that city carrier department stamps were employed in Baltimore (Scott nos. 1LB1-1LB9.)

It is not clear what the intended purpose of this handstamp was. I agree with Kelly's assertion that it was intended for use on bulk mailings, primarily printed matter such as circulars, pamphlets, notices, etc. The survival rate is very low, perhaps due to its nature as "junk mail."

The author would appreciate information about any additional examples of this handstamp known to readers.

Baltimore Carriers

Part II – The “Horse and Rider” Stamps

By
Larry Lyons

This research is the second part on Baltimore Carriers and the focus of this article is the “Horse and Rider” adhesives. There are two colors of the “horse and rider” adhesives. The black ink stamp is 1LB8 and the red stamp is 1LB9. See **Figures 1 and 2**. The research will focus on the usage period for these stamps.

The Research

My personal library contains more than 1000 pages of auction records on the “horse and rider” carrier adhesives. The project would include going thru those records and extracting all of the dated covers. An analysis of the Baltimore datestamps would also be used to help identify the years of usage. Wilson Hulme was working on this project and this author was in contact with him supplying data as it was found to contribute to his project. Wilson Hulme and John Bowman gave a joint presentation on this subject on March 14, 2004 and their research and “work in progress” handout contains some useful information. Wilson Hulme had published his research on plating and dating of Baltimore postmarks.¹ This research would prove helpful to my study. Wilson Hulme analyzed the Norona Baltimore datestamps and focused on the probable usage dates for each of the various types of datestamp. Hulme and Bowman pointed out “error” datestamps which contained year dates in the cds but were actually used in a different year. So much care is needed not to be mislead by an erroneous datestamp.

The Red Adhesive

The red “horse and rider” adhesive was issued in August 1857 under the administration of Postmaster John G. Morris.² According to this writer’s research the red “horse and rider” adhesive saw predominant use from May 1859 through January 1860 and was followed by the black “horse and rider” adhesive.

I was able to find 65 dated covers with the red “horse and rider” adhesive. A chart summarizing those covers is shown in **Figure 3** on page 64.

From the records I established in **Figure 3** I am comfortable stating my hypothesis that the red “horse and rider” adhesive saw predominant use from May 1859 through January 1860. I do not doubt the three late usages but note they are 9-10 months beyond the predominant usage period and could be a result of people using up what they had at a much later date to avoid the stamps having no value when the stamps would no longer be accepted. The one early usage of August 1858 is probably a wrong deduction by the lot describer or possibly a docket date that

¹ Hulme, II, W. Wilson, “Plating” *Baltimore Postmarks 1851-1861*. The Chronicle, Vol. 54, No. 4, November 2002, pages 250-263.

² *The Carrier Service in Baltimore Prior to 1863*, *The Collectors Club Philatelist*, Denwood Kelly, Vol. 52, No. 1, page 48.



Figure 1. A red, 1LB9, adhesive tied on cover by a Baltimore datestamp. The datestamp is type 18 in black which according to Wilson Hulme's study is only found used from June 1859 to February 1860. The year date of this November 11 cover is therefore most probably 1859.



Figure 2. A black, 1LB8, adhesive tied on cover by a Baltimore datestamp. The datestamp is type 27 which according to Wilson Hulme's study is only found used from February 1859 to December 1862. The docketing date on this cover is February 13, 1861.

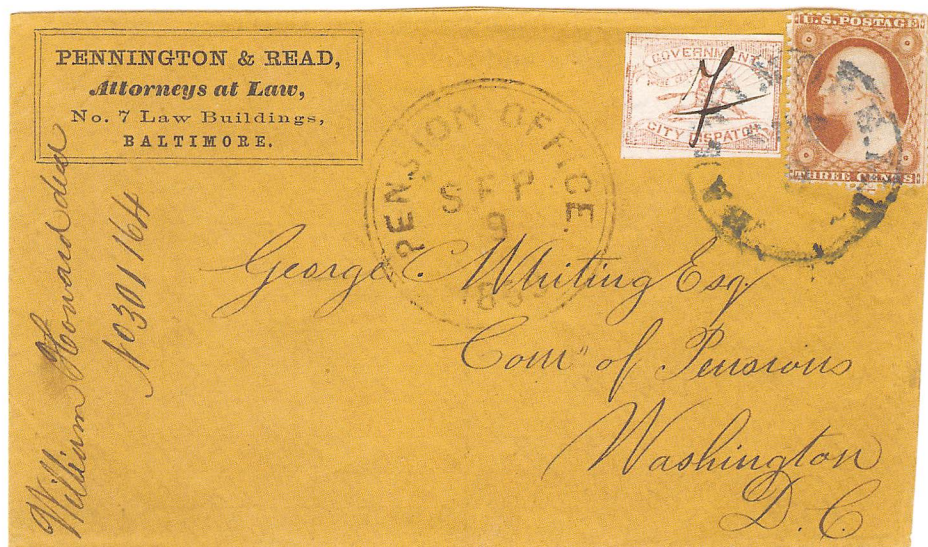


Figure 5. A “horse and rider” adhesive tied by a Type 27 datestamp. The receiving datestamp at the Pension Office is September 9, 1859 giving us the year date for this cover.



Figure 6. An example of a black “horse and rider” stamp tied on cover by a rimless Baltimore datestamp, Type 21.

**Most Likely Month and Year Dating
of the Red “Horse and Rider” Adhesives, 1LB9**

	<u>Number of Covers</u>
August 1858 *	1
May 1859	2
June 1859	1
July 1859	6
August 1859	6
September 1859	13
October 1859	2
November 1859	19
December 1859	10
January 1860	1
February 1860	1
November 1860	1
December 1860	2

*research indicates the year date of this cover is 1859.

**Figure 3. A tabulation of the author’s research data on usage dates for
the red “horse and rider” adhesive, 1LB9.**

looks like an eight but is really a nine. The cover appears in the Caspary sale as Lot 172.³ The lot description says it is a black Baltimore datestamp and according to Wilson Hulme’s research this datestamp is only recorded genuinely used from June 1859 to February 1860 so this August 22 datestamp would have to be 1859.

The conclusion of my study on the red “horse and rider” adhesives is therefore that the predominant usage period was May 1859 to February 1860. This study has not been previously done.

The Black Adhesive

The black “horse and rider” adhesive was issued in September 1857. According to this writer’s research, the black “horse and rider” carrier stamps appeared predominately from January 1860 through May 1861. These were used just after the red “horse and rider” adhesives. The black “horse and rider” adhesives are used during the administration of John G. Morris whose term ended April 15, 1861.

I went through the same lengthy and tedious research for the black “horse and rider” adhesives as I did for the red adhesives. I was able to find 53 dated covers with the black horse and rider adhesive. A chart summarizing these covers is shown in **Figure 4**, which can be found on page 69.

³ H.R. Harmer, Caspary, March 18-21, 1957, Lot 172.



Figure 7. A “horse and rider” adhesive on a cover to Germany.

The Rimless Handstamp

The cover shown in **Figure 6** has a black “horse and rider” adhesive tied by a blue rimless Baltimore datestamp, Type 21. See **Figure 6a**. The Baltimore cds has a date of August 2. From Wilson Hulme’s research we find this rimless datestamp used from January 1861 to February 1862 so the year date of this cover is most likely 1861.



Figure 6a. The rimless datestamp from the Wilson Hulme study done with John Bowman.



**Figure 9. A red “horse and rider” stamp on cover with short rays.
This is unlisted on cover.**

An example of the red “horse and rider” adhesive on cover with “short rays” is shown in **Figure 9**. The probable year date of this cover is 1859 or 1860. The cds is Type 19 and is not known used after August 1861. The Nesbitt envelope is U10 issued in 1854. The “short rays” adhesive, 1LB9b, is presently unlisted on cover. It is my opinion that this is a genuine usage of this adhesive.



**Figure 10. An example of a black “horse and rider” stamp on a cover
with “short rays”, 1LB8b. The indicia is U27 and this is currently
unlisted.**

Figure 10 is an example of the black “horse and rider” adhesive on a cover with “short rays”. The Nesbitt envelope is the U27 issued in 1860. The probable year dates of this cover with a blue Baltimore cds, Type 27 of October 16 is ca.1860-1861. This cover received a certificate of genuineness from the Philatelic Foundation (PF 473403). The “horse and rider” is currently not listed in the *Scott Specialized Catalogue* with the star die. It is suggested that this certified example be listed.



Figure 11. An example of the black “horse and rider” stamp on cover with the “sent” error, 1LB8a.

The “SENT” Error

The “SENT” error occurred in position 7 on the pane of 10 of the “horse and rider” adhesive. **Figure 11** is an example of the black “horse and rider” “SENT” error, 1LB8a, on a cover. The blue Baltimore datestamp is Type 27 which according to Hulme was used from February 1859 to December 1862. The date on this cover is August 3 ca. 1859 or 1860. The U.S. three cent stamp is the 1857 Type II (#26).



Figure 12. An example of the black “horse and rider” stamp on a cover with the “ONS” error. This is currently unlisted.

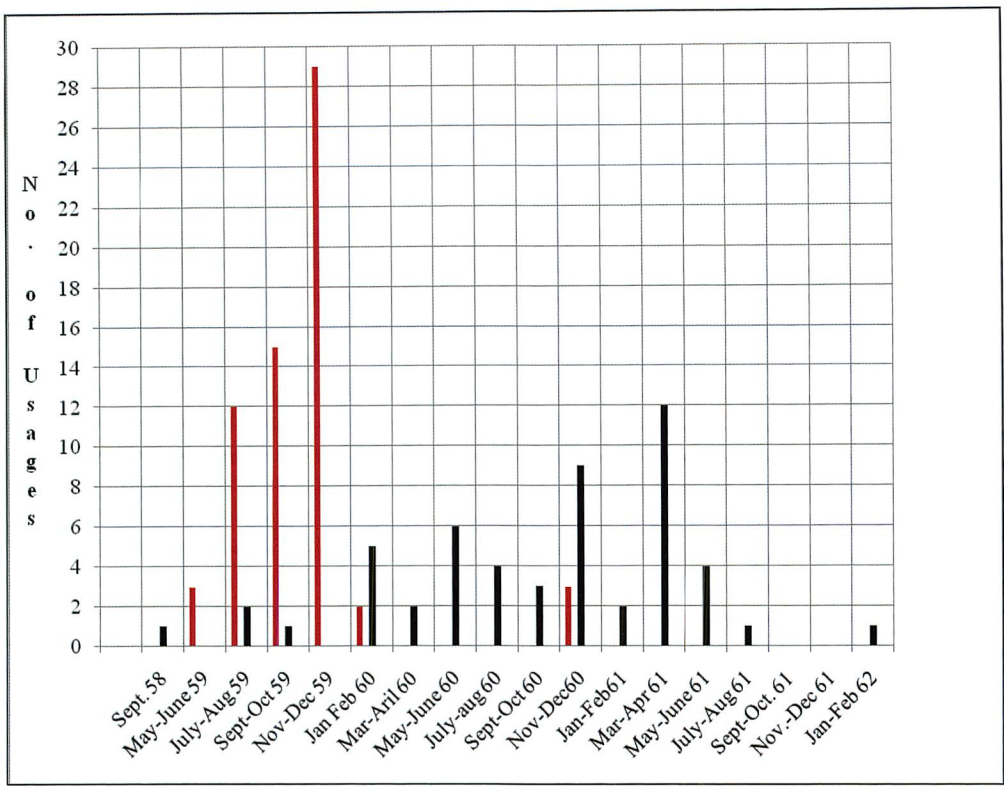


Figure 14. The number of “horse and rider” covers found by the author by two month periods.

**Month and Year Dating
of the Black “Horse and Rider” Adhesives, 1LB8**

	<u>Number of Covers</u>
September 1858	1
July 1859	1
August 1859	1
September 1859	1
November 1859	0
December 1859	0
January 1860	4
February 1860	1
March 1860	1
April 1860	1
May 1860	6
June 1860	0

	<u>Number of Covers</u>
July 1860	2
August 1860	2
September 1860	0
October 1860	3
November 1860	7
December 1860	2
January 1861	0
February 1861	2
March 1861	7
April 1861	5
May 1861	4
August 1861	1
February 1862	1

Figure 4. A tabulation of the research data on usage dates for the black “horse and rider” adhesive, 1LB8.

From the records I established in **Figure 4** I deduced my hypothesis that the black “horse and rider” adhesive saw predominant use from January 1860 through May 1861. I know the September 1859 cover is genuine because the “horse and rider” adhesive is tied by the Baltimore datestamp and there is a receiving datestamp of the Pension Office of September 9, 1859. See **Figure 5**. This may also be true of the July 1859 and August 1859 usages. The September 1858 cover has an untied example of 1LB8 and seems to be an example on a cover to which it did not originate. The February 14, 1862 cover appeared in the Siegel sale of December 12, 2007 as Lot 47 and previously in the Bennett sale of November 15, 1998 as Lot 289 and has long been considered the latest recorded use of a Baltimore carriers stamp. It is ex-Strauss and is illustrated in Denwood Kelly’s “The Carrier Service in Baltimore, Prior to 1863.”

Use to a Foreign Destination

The cover shown in **Figure 7** has a tied black horse and rider, 1LB8, adhesive. The blue Baltimore cds is type 22 and contains the year date of 1861 on this April 23, 1861 cover. The 1-cent Baltimore carrier fee to the post office was paid by the “horse and rider” adhesive. The cover traveled to New York by U.S. mail and received a New York AM. packet handstamp of April 27 (1861) with a debit to Prussia of 23 cents. The letter traveled on the packet ship *Fulton* which departed on April 27, 1861 and arrived in Havre on May 10, 1861. The “30” indicates the 30-cent Prussia closed mail rate. The manuscript Aachen 12 Sgr postage due is crossed out. The manuscript “45” is the postage due of 45Kr in Germany. This is the only “horse and rider” cover to a foreign destination.

The “Short Rays”

The horse and rider adhesives were printed in panes of 10. An example is shown in **Figure 8**.



Figure 8. A pane of 10 of the black “horse and rider” adhesives. The “short rays” occur in position 2 and the “SENT” error occurs in Position 7. From the Golden Sale, Siegel Auction Galleries, November 15-17, 1999, Lot 130.



Figure 12a.
The “ONS” error



Figure 12b.
The Black Type 27
datestamp

The “ONS” Error

This author previously discovered the “ONS” error in April 2008 and published its discovery.⁴ An example of this error is shown in **Figure 12**. The error can be seen in **Figure 12a**. The cover has a Black Baltimore Type 27 datestamp (See **Figure 12b**) which according to Hulme only was used from June 1, 1859 to February 1860. This January 12 cover is therefore most likely from 1860. The Nesbitt envelope is Type U10 and since the discovery article it has received a good certificate from the Philatelic Foundation (PF 473405). The suggested new listings in the *Scott Specialized Catalogue* are:

- 1LB8c “ONS” Error, position 5
- 1LB8c “ONS” Error, position 5, on cover
- 1LB8ac “ONS SENT” Errors, position 2, on cover



Figure 13. An example of a red “horse and rider” stamp with a multiple impression.

Double Impression

Two examples of the red “horse and rider” stamp have been recorded with a multiple impressions. An example is shown in **Figure 13**. This item has a *Scott Specialized Catalogue* listing as 1LB9c.

Baltimore Carriers Initials and Names

In **Figure 13** we see an example of a Baltimore Carrier adhesive with a manuscript “F” cancel. This was the initial for carrier John S. Fusselbaugh. Other initials seen and the possible carrier are as follows:

“F”	John S. Fusselbaugh
“W.J.K.”	William J. King
“K”	William J. King
“R”	Possibly Dominick Rayhice or Joseph Rosenstein
“H”	Possibly Thomas J. Harvey
“Harvey”	Thomas J. Harvey
“Busch”	Henry Busch
“J”	Possibly Samuel Jarden
“M”	Possibly John McWilliams
“W”	Possibly Edward Wartman or Thomas Willis

⁴ “ONS” Error on the Baltimore Running Horse Government City Dispatch Carrier Stamp, *The Penny Post*, Larry Lyons, April 2008, pages 3-8.

A list of 77 Baltimore letter carriers and the years they worked can be found in Denwood Kelly's article.⁵

Conclusions

The research seems to indicate the predominant usage period of the red "horse and rider" adhesive was May 1859 to February 1860. See chart in **Figure 14**.

The research seems to indicate that the predominant usage period for the black "horse and rider" adhesive was from January 1860 through May 1861 with an early usage of at least October 1859 and possibly as early as July 1859. The latest use is February 14, 1862. Why do the red and black usage periods overlap in time?

It is noted that the year dates given in the *Scott Specialized Catalogue* are not consistent with the research data accumulated in this study. A chart of findings of the usage periods of the various Baltimore carrier adhesives can be found in Part I of this article.⁶ The references used for this article can also be found at the end of Part I of this article.

Readers with additional information should contact this author. John Bowman intends on continuing the research into the evaluation of Baltimore handstamps during this time period.

⁵ *The Carrier Service in Baltimore Prior to 1863*, *The Collectors Club Philatelist*, Denwood Kelly, Vol. 52, No. 1, pages 44-48.

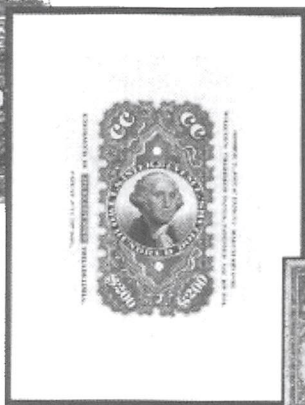
⁶ *The Usage of Carrier Adhesives in Baltimore-Part I*, *The Penny Post*, Larry Lyons, April 2009, pages 49-55.

Phenomenal.

Our Website Is Always Changing. Shop Our Auction & Hundreds of Stamps In Full Color!



By the way, you can view our latest giant price list at our site...or send for it by mail. It's free!



U.S. Revenue Stamps

Penny Post readers can relax in the comfort of their home and review one of the world's largest stocks of revenue stamps at our Internet web site. Locals and Carriers are there, too!

But wait, there's more! Our very large web site is one of philately's most exciting. It's full of entertaining full-color graphics and up-to-date information on the revenue stamp world. And it changes all the time...so one visit is never enough.

Scott listed revenues, embossed & stamped paper, beer stamps, taxpaid revenues, possessions revenues, proofs & essays, local stamps, and philatelic literature. America's finest stock. Write, call or visit our site to get our latest price list or send your want list for custom approvals tailored to your needs.

Eric Jackson

P.O. Box 728 · Leesport PA 19533-0728
(610) 926-6200 · Fax: (610) 926-0120

Email: eric@revenueer.com

www.ericjackson.com



When the most valuable collections of
Carriers and Locals are sold,
one firm is chosen again and again.



When David Golden decided on the firm to handle his collection of Carriers and Locals—the largest and most valuable ever sold—he chose Siegel Auction Galleries.

When Richard Schwartz, past president of the Carriers and Locals society, decided to sell his massive collection, he chose the Siegel firm.

And, when the Hall family looked for an auction firm with the ability to sell one of the most important collections of Carriers and Locals ever assembled, they chose the Siegel firm.

Our knowledge, relationships with collectors, and state-of-the-art presentation (print and digital) qualify us above all others to handle collections of Carriers and Locals.

Buying or selling, it makes sense to deal with the leader.

Robert A. Siegel

AUCTION GALLERIES, INC.

www.siegelauctions.com

60 East 56th Street, 4th Floor, New York, NY 10022
Phone (212) 753-6421 Fax (212) 753-6429 E-mail: stamps@siegelauctions.com